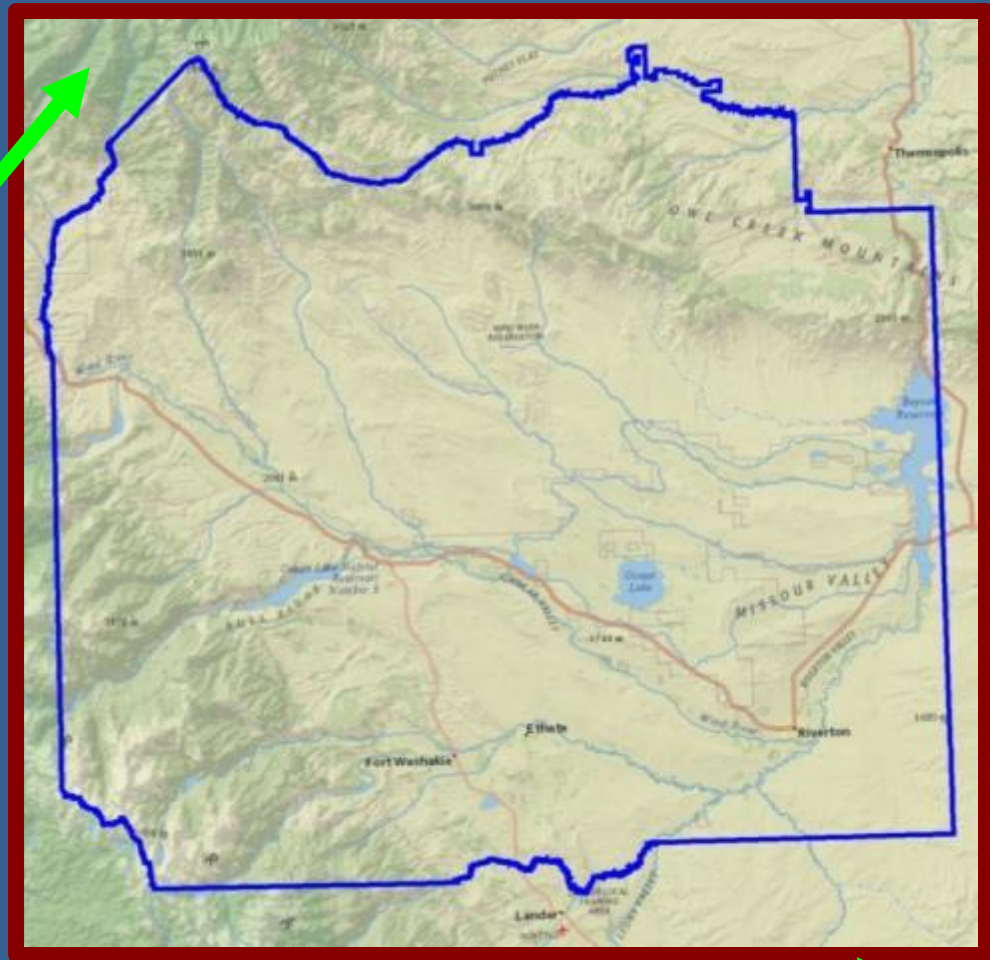


Wind River Reservation

- Est. 1868
- 2.2 Million ac. (Tribally controlled of ~1.9 M)
- E. Shoshone: 4,000
- N. Arapaho: 9,000
Arrival in 1878
- 1,000 hunters





Grizzly Bear Management Plan for the Wind River Reservation



Image courtesy of www.firstpeople.us

**Eastern Shoshone and Northern Arapaho Tribes
Ft. Washakie and Ethete, WY
&
Shoshone and Arapaho Tribal Fish
and Game Department
Ethete, WY**

Assisted by the U.S. Fish and Wildlife Service
Fish and Wildlife Conservation Office
Lander, WY

March 3, 2009

- Balance needs of bears and people
- Will follow Conservation Strategy (Mortality limits)
- If desired, could hunt
- Habitat management
- Outreach
- Conflict management
- Research and monitoring



- Excellent collaboration with WY G&F
- Research capturing since 2006 - 15 grizzlies