



Interagency Grizzly Bear Committee

Bear-Resistant Products Testing Program

HOW TO SUBMIT A PRODUCT

At this time, the Grizzly & Wolf Discovery Center (GWDC) in West Yellowstone, Montana is the only facility approved for evaluation and testing of commercially-available products for the Interagency Grizzly Bear Committee's (IGBC) bear-resistant products testing program. Anyone wishing to have a container evaluated through this program is responsible for having the container(s) delivered to the GWDC and also for arranging to either have containers(s) returned to them at their expense or arranging for GWDC to keep or dispose of the tested product(s). Instructions for submitting a product are listed below. *Please note: products must be in their final production form when they are submitted for testing. Temporary or working prototypes will not be accepted. If a product passes testing and IGBC certification is issued, any modifications to that product will likely require re-testing and re-approval.*

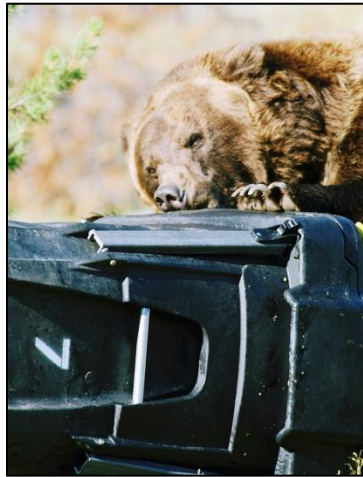
Products will be evaluated and tested on a first-come, first-served basis as time and weather permit. Live-bear testing will be conducted between **April 1st and October 31st**. Product submitters who are interested in attending the test in person should advise the GWDC in advance so arrangements can be made.

Submitting a Product for Testing

Step 1. Complete a Product Submission Form for each individual product.

- A separate form must be completed and submitted for each product that is sent in.
- Each product must be uniquely identifiable on the Product Submission Form and on the actual product. For example, if you submit three versions of a 95-gallon curbside garbage cart, please either number them 1, 2 and 3 or give them some other identifying name (e.g., light, medium and heavy). Please mark each product with some kind of

paint or permanent marker and make sure that it can be seen from a distance so that it is clear which product is being tested when we review the video footage. Examples of how to properly identify a product is shown in the photos below. Note that the numbers are painted in white on the front of the cart and are clearly visible in the photos.



- If more than one version of a product is being submitted, design or structural differences must exist between the versions (i.e., each product submitted should differ from others being submitted). These differences must be clearly described on the Product Submission Forms.
- Product Submission Forms must be filled out accurately and completely. If complete information is not provided, products will not be evaluated or tested. If you have questions about the form, please contact Randy Gravatt: (406) 646-7001 ext. 112 or randyg@grizzlydiscoveryctr.com.
- Please indicate on the product submission form whether or not you would like your product returned after testing is complete. If you want your product returned, please check the “YES” box and provide either a preprinted Fed Ex mailing label with the product, or provide your Fed Ex account information on the product submission form where indicated. **Please note that this decision MUST be made PRIOR TO TESTING.**
- A fee will be charged for each product evaluated. A copy of the fee schedule is provided at the end of this document and can also be obtained on the IGBC website under the “Arranging to Have a Product Tested” tab.

- Live-bear tests will be videotaped and unedited copies of the video (provided on SD card) can be obtained from the GWDC for a fee. Please note that if you wish to request a copy of the testing video, you must do so at the time you submit products for testing by marking the appropriate box on the product submission form. Requests for video footage will **not** be honored after testing is complete.

Step 2. Submit the Product Submission Form(s).

- Forms can be submitted by scanning and sending via email, mailing via postal service or by faxing, along with the required fee(s), to:
 - Email: randyg@grizzlydiscoveryctr.com
 - Mailing address:
 - Grizzly & Wolf Discovery Center
 - Attn: Randy Gravatt
 - PO Box 996
 - West Yellowstone, MT 59758
 - Phone number: 406-646-7001 ext. 112
 - Fax number: 406-646-7004

Step 3. Pay fees.

- To pay fees by check, make check payable to the Grizzly & Wolf Discovery Center and mail it to the following address:
 - Grizzly & Wolf Discovery Center
 - Attn: Randy Gravatt
 - PO Box 996
 - West Yellowstone, MT 59758
- To pay by credit/debit card, please call Peggy Russell at the GWDC at: 406-646-7001 ext. 110

Step 4. Arrange to ship product(s) to testing facility.

- Ship product to the following address:

Grizzly & Wolf Discovery Center
Attn: Randy Gravatt
201 S Canyon Street
West Yellowstone, MT 59758
406-646-7001 ext. 112

Please note that product testing/evaluation will NOT be conducted until a Product Submission Form has been provided and the required fee has been received by the GWDC.

2018 Fee Schedule

FOR PRODUCTS SUBJECTED TO LIVE-BEAR TESTING

Backpacking Containers / Small Storage Drums.....	\$500
Coolers.....	\$600
Residential Garbage Carts (Plastic).....	\$700
Panniers and Dry Boxes (Aluminum).....	\$600

FOR PRODUCTS SUBJECTED TO TECHNICAL EVALUATION

Dumpsters/Garbage Enclosures/Food Storage Lockers (Large Steel Products)	
• Staff Evaluation only (See Testing Protocol for more information).....	\$400
• Live-Bear Test (if required).....	\$800

OTHER FEES

(Please fill out applicable portions on Product Submission Form)

Testing Video (SD card)	\$ 70
-------------------------	-------