



# Interagency Grizzly Bear Committee

## Bear-Resistant Products Testing Program

### HOW TO SUBMIT A PRODUCT

At this time, the Grizzly & Wolf Discovery Center (GWDC) in West Yellowstone, Montana is the only facility approved for evaluation and testing of commercially-available products for the Interagency Grizzly Bear Committee's (IGBC) bear-resistant products testing program. Anyone wishing to have a container evaluated through this program is responsible for having the container(s) delivered to the GWDC and also for arranging to either have containers(s) returned to them at their expense or arranging for GWDC to keep or dispose of the tested product(s). Instructions for submitting a product are listed below. *Please note: products must be in their final production form when they are submitted for testing. Temporary or working prototypes will not be accepted. **If a product passes testing and IGBC certification is issued, any modifications to that product will likely require re-testing and re-approval.***

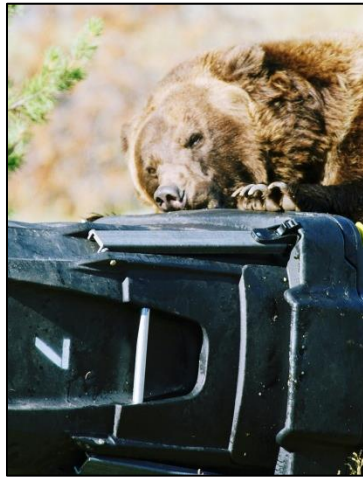
Products will be evaluated and tested on a first-come, first-served basis as time and weather permit. Live-bear testing will be conducted between **April 1<sup>st</sup> and October 31<sup>st</sup>**. Product submitters who are interested in attending the test in person should advise the GWDC in advance so arrangements can be made.

### Submitting a Product for Testing

***Step 1. Complete a Product Submission Form for each individual product.***

- A separate form must be completed and submitted for each product that is sent in.
- Each product must be uniquely identifiable on the Product Submission Form and on the actual product. For example, if you submit three versions of a 95-gallon curbside garbage cart that vary only slightly by the amount or plastic in their lids or bodies, or by the width of the metal banding around their lids, please give them each a unique and

identifiable number or name such as 1, 2 and 3 or light, medium and heavy. Please mark each product with some kind of paint or permanent marker and make sure that each number or symbol is at least 5 inches high and 3 inches wide. Examples of how to properly identify a product are shown in the photos below. Note that the numbers are painted in white on the front of the cart and are clearly visible in the photos.



- If more than one version of a product is being submitted, design or structural differences must exist between the versions (i.e., each product submitted should differ from others being submitted). These differences must be clearly described on the Product Submission Forms. A separate Product Submission Form must be submitted and a testing fee will be assessed for EACH product submitted for testing. A copy of the fee schedule can be found on the IGBC website.
- Product Submission Forms must be filled out accurately and completely. If complete information is not provided, products will not be evaluated or tested. If you have questions about the form, please contact Randy Gravatt: (406) 646-7001 ext. 112 or [randyg@grizzlydiscoveryctr.com](mailto:randyg@grizzlydiscoveryctr.com).
- Please indicate on the product submission form whether or not you would like your product returned after testing. If you want your product returned, please check the “YES” box and include a preprinted FedEx mailing label with the product, or provide your Fed Ex account information on the product submission form where indicated.  
**Please note that this decision MUST be made PRIOR TO TESTING.**

- Live bear tests will be videotaped and unedited copies of the video (provided on SD card) can be obtained from the GWDC for a fee. Requests for a copy of the testing video **MUST BE MADE AT THE TIME PRODUCTS ARE SUBMITTED FOR TESTING** by marking the appropriate box on the Product Submission Form. Requests for video footage after testing will **not** be honored.

***Step 2. Submit the Product Submission Form(s).***

- Forms can be submitted by fax, snail mail or email, along with the required fee(s), to:
  - Email: [randyg@grizzlydiscoveryctr.com](mailto:randyg@grizzlydiscoveryctr.com)
  - Mailing address:
    - Grizzly & Wolf Discovery Center
    - Attn: Randy Gravatt
    - PO Box 996
    - West Yellowstone, MT 59758
  - Phone number: 406-646-7001 ext. 112
  - Fax number: 406-646-7004

***Step 3. Pay fees.***

- To pay fees by check, make check payable to the Grizzly & Wolf Discovery Center and mail it to the following address:
  - Grizzly & Wolf Discovery Center
  - Attn: Randy Gravatt
  - PO Box 996
  - West Yellowstone, MT 59758
- To pay by credit/debit card, please call Peggy Russell at the GWDC at: 406-646-7001 ext. 110

**Step 4. Arrange to ship product(s) to testing facility.** *Prior to shipping or transporting your products, please make sure your products are free from sharp or rough edges, loose parts/components, points or other hazards that could harm the bears during testing. Any potentially harmful parts will likely cause a delay in testing and could result in an additional fee to correct them.*

- Ship product(s) to the following address:

Grizzly & Wolf Discovery Center  
Attn: Randy Gravatt  
201 S Canyon Street  
West Yellowstone, MT 59758  
406-646-7001 ext. 112

***Please note that product testing/evaluation will NOT be conducted until a Product Submission Form has been provided and the required fee has been received by the GWDC.***