

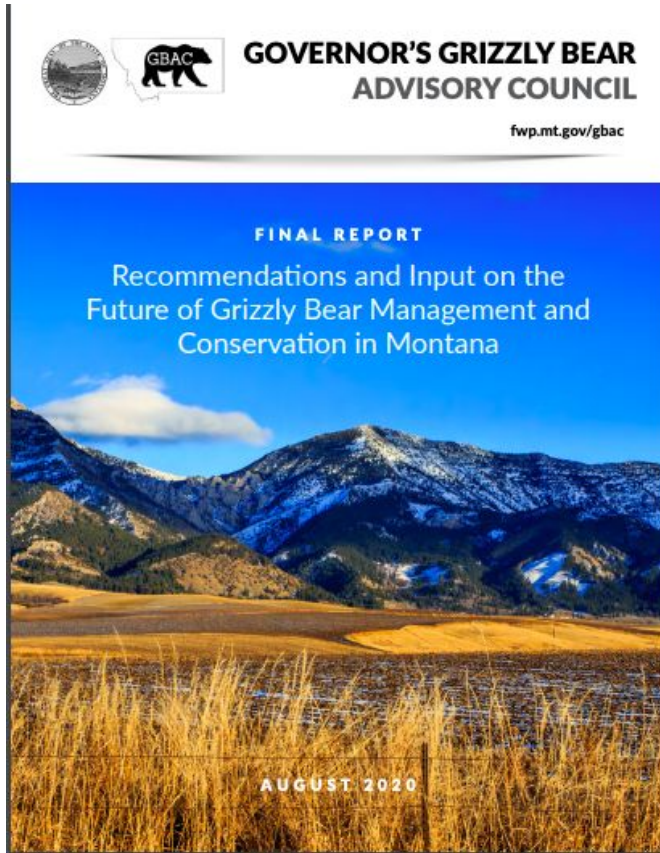
Montana Grizzly Bear Advisory Council

Created by Gov. Bullock Executive Order - July 24, 2019

Purpose: develop recommendations on key issues and challenges related to conservation and management of grizzly bears in MT, particularly those on which there is significant social disagreement.

Final report with recommendations completed August 2020

<http://fwp.mt.gov/fishAndWildlife/management/grizzlyBear/gbac.html>



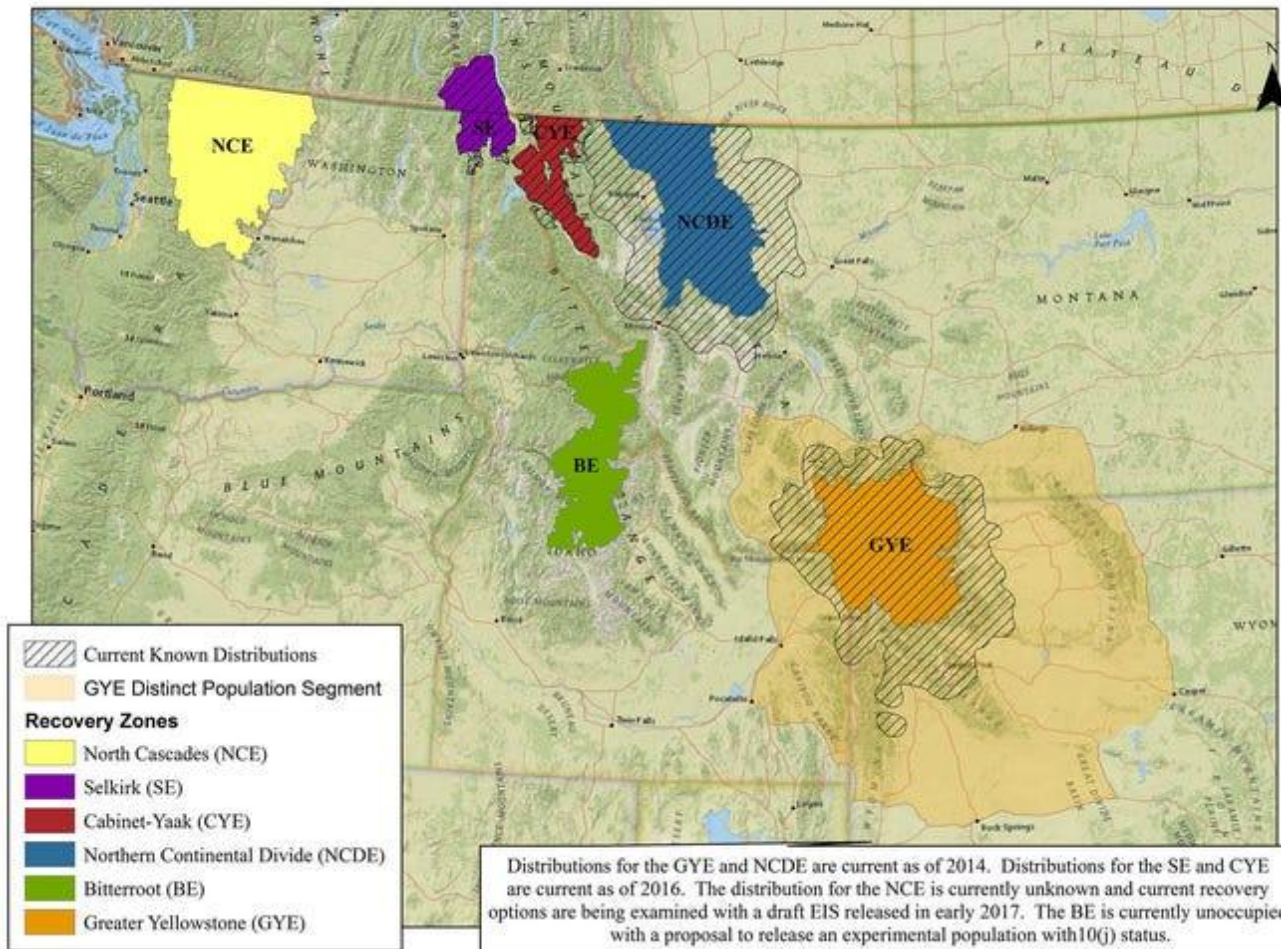
Key issues from EO:

- Connectivity
- Distribution
- Conflict prevention, response, mitigation
- Transplant protocols
- Role of hunting

Vision Statement

We envision fully recovered grizzly bear populations in the four identified recovery areas in Montana and landscapes in-between that accommodate grizzly bear presence and connectivity while maintaining the safety and quality of life of those that live, work, and play in Montana.

Grizzly Bear Recovery Zones, Distributions, and Distinct Population Segments



Key Issues

- Connectivity
- Distribution
- Conflict prevention, response, mitigation
- Transplant protocols
- Role of hunting

Recommendations

- Education
- Conflict Prevention/Reduction
- Conflict Response & Protocols
- Distribution, Relocation, Connectivity
- Resources
- Non-consensus discussion on role of hunting

Main Themes

- The grizzly bear is important in Montana's history and future.
- Recognize and focus on how much common ground there is
- More bears in more places, more people ... tall task!
- Facing challenges proactively, coordinating closely is going to be essential.
- Increased resources are necessary to do this well.