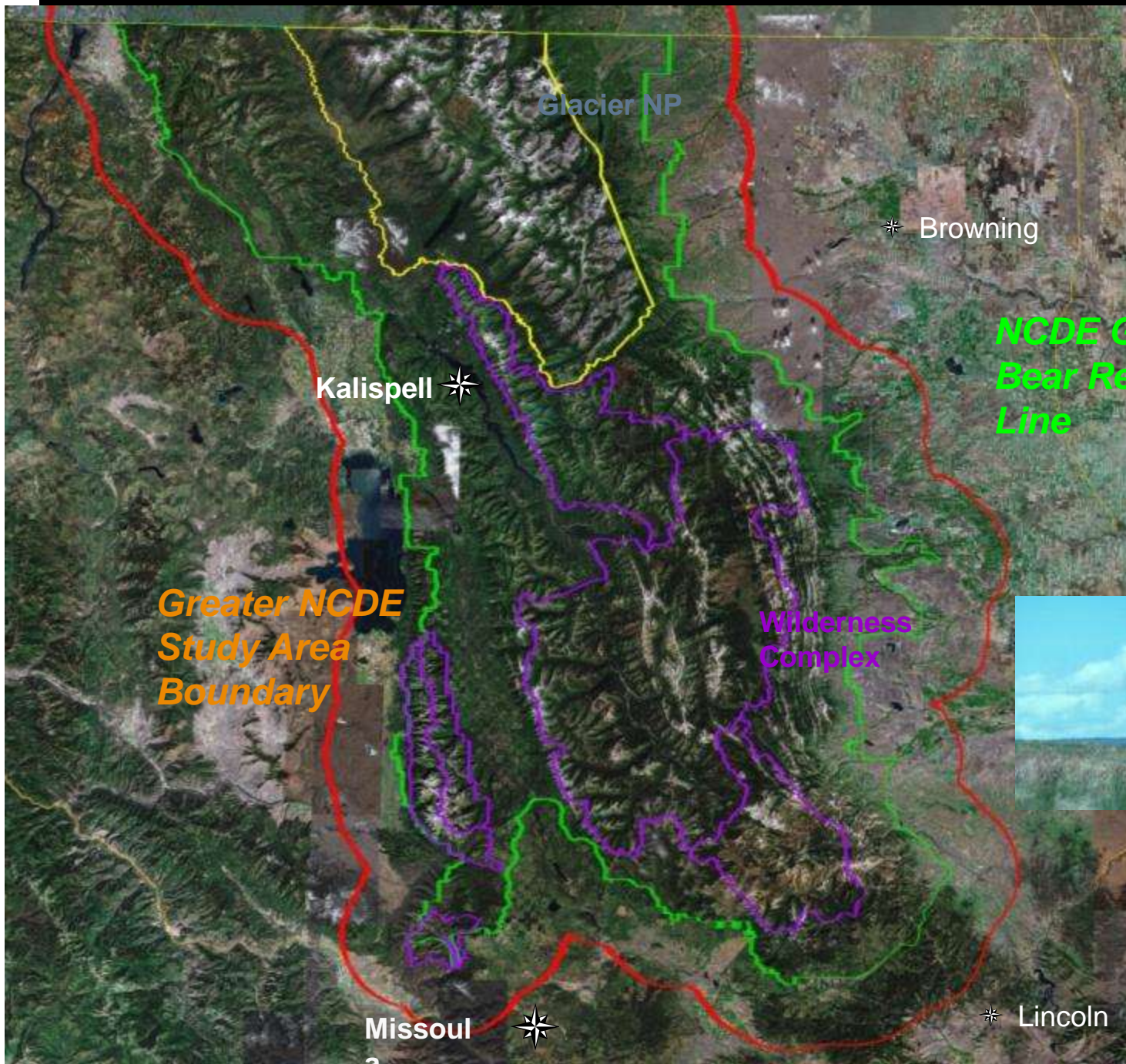


Observations on population expansion by grizzly bears into the Rocky Mountain Front high plains





**NCDE Grizzly
Bear Recovery
Line**

**Greater NCDE
Study Area
Boundary**

**Wilderness
Complex**

Glacier NP

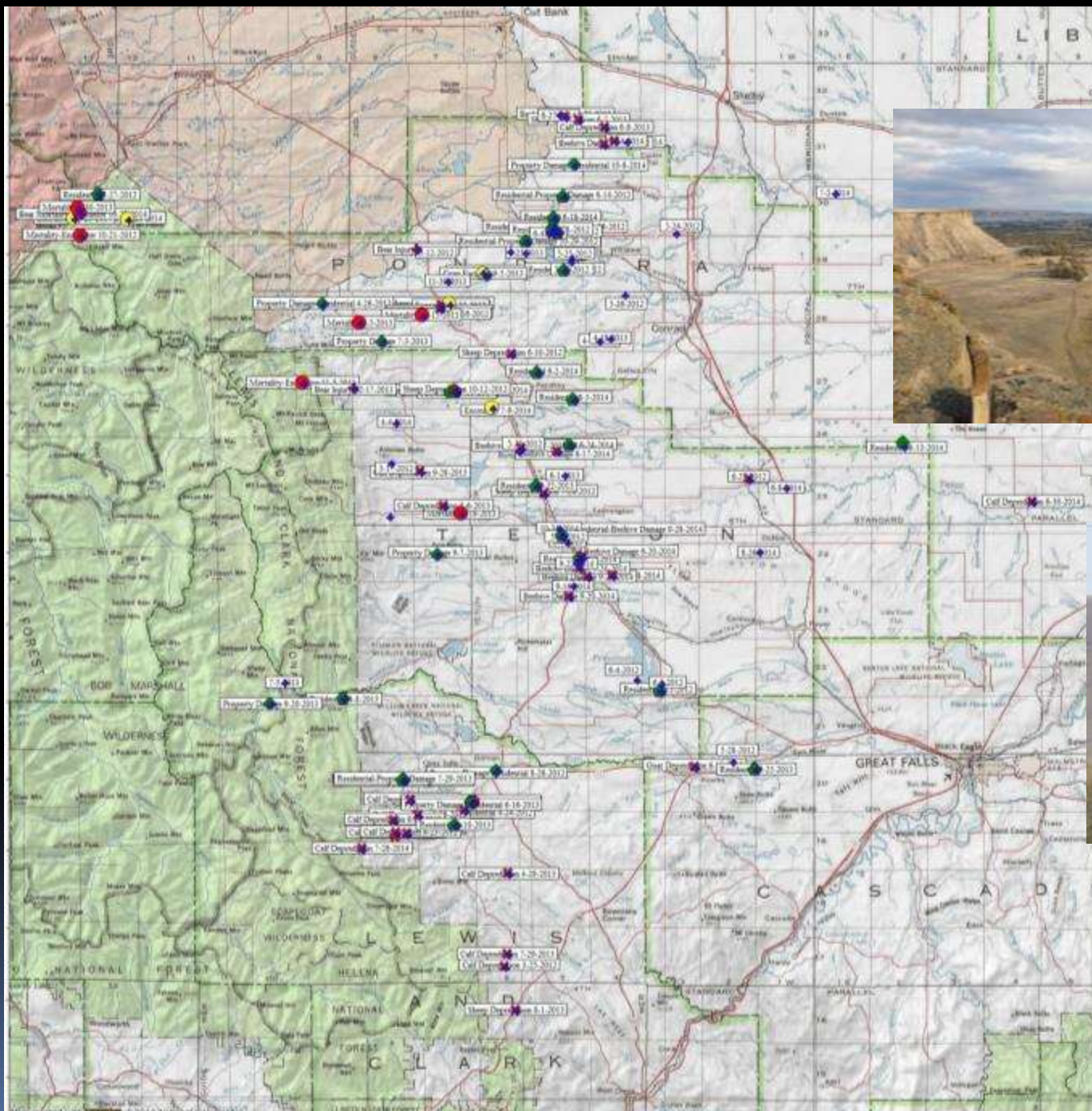
*** Browning**

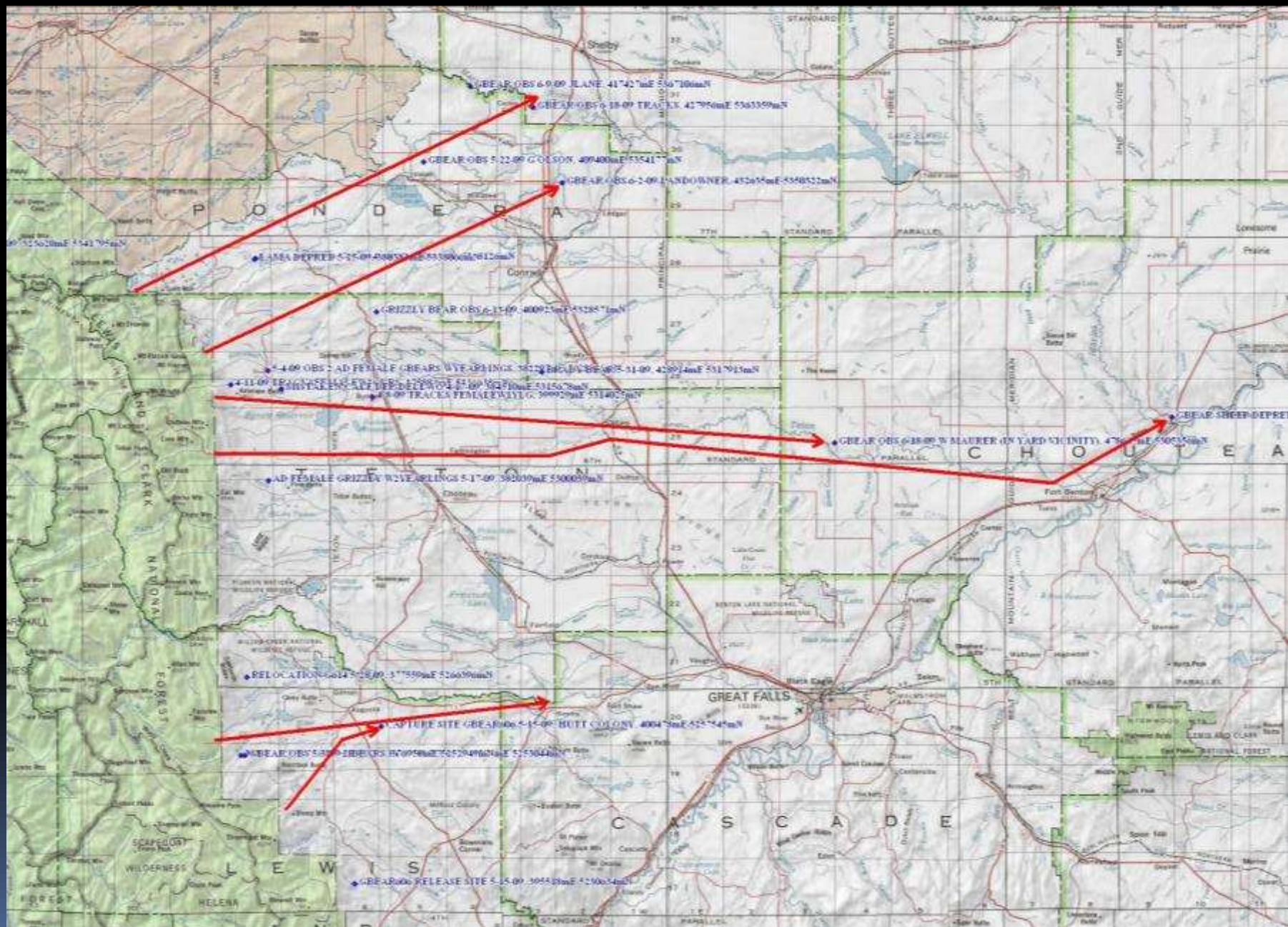
Kalispell *

Missoula *

*** Lincoln**











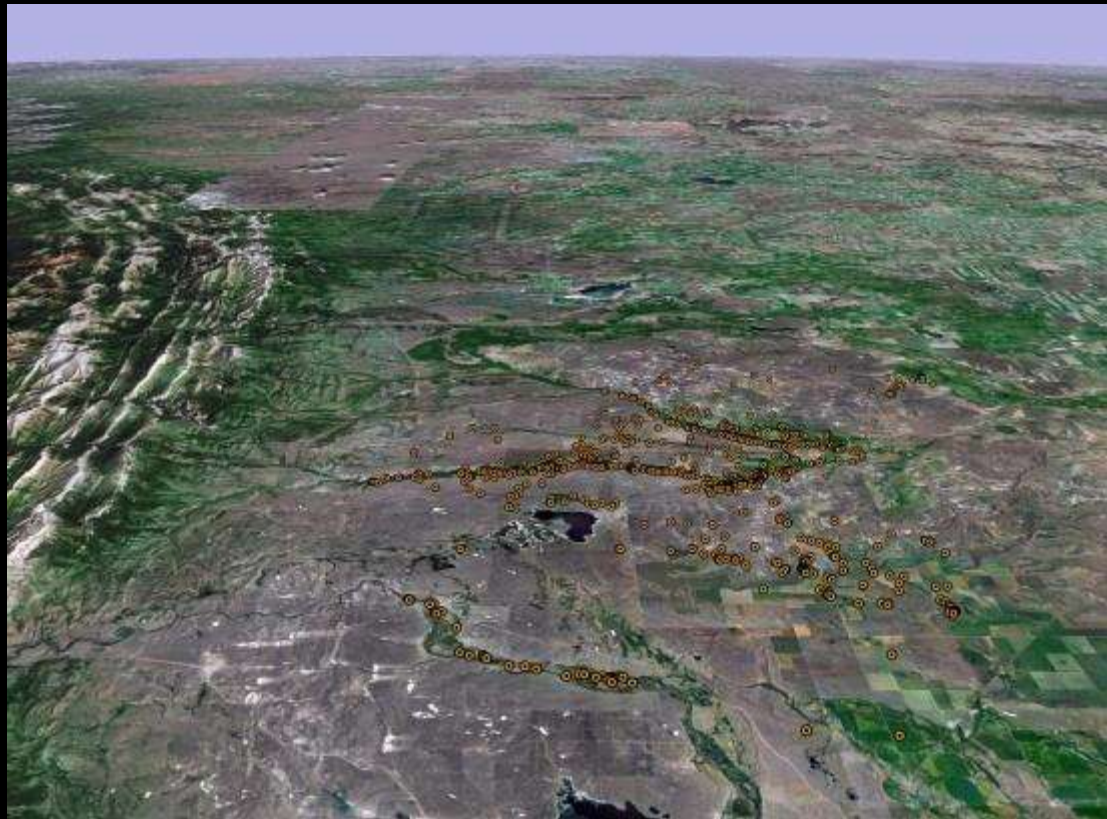
Stacey O'Neal

2 hours ago · Edited · 

Look who strolled through the neighborhood this morning.....I think I wintered better than them!





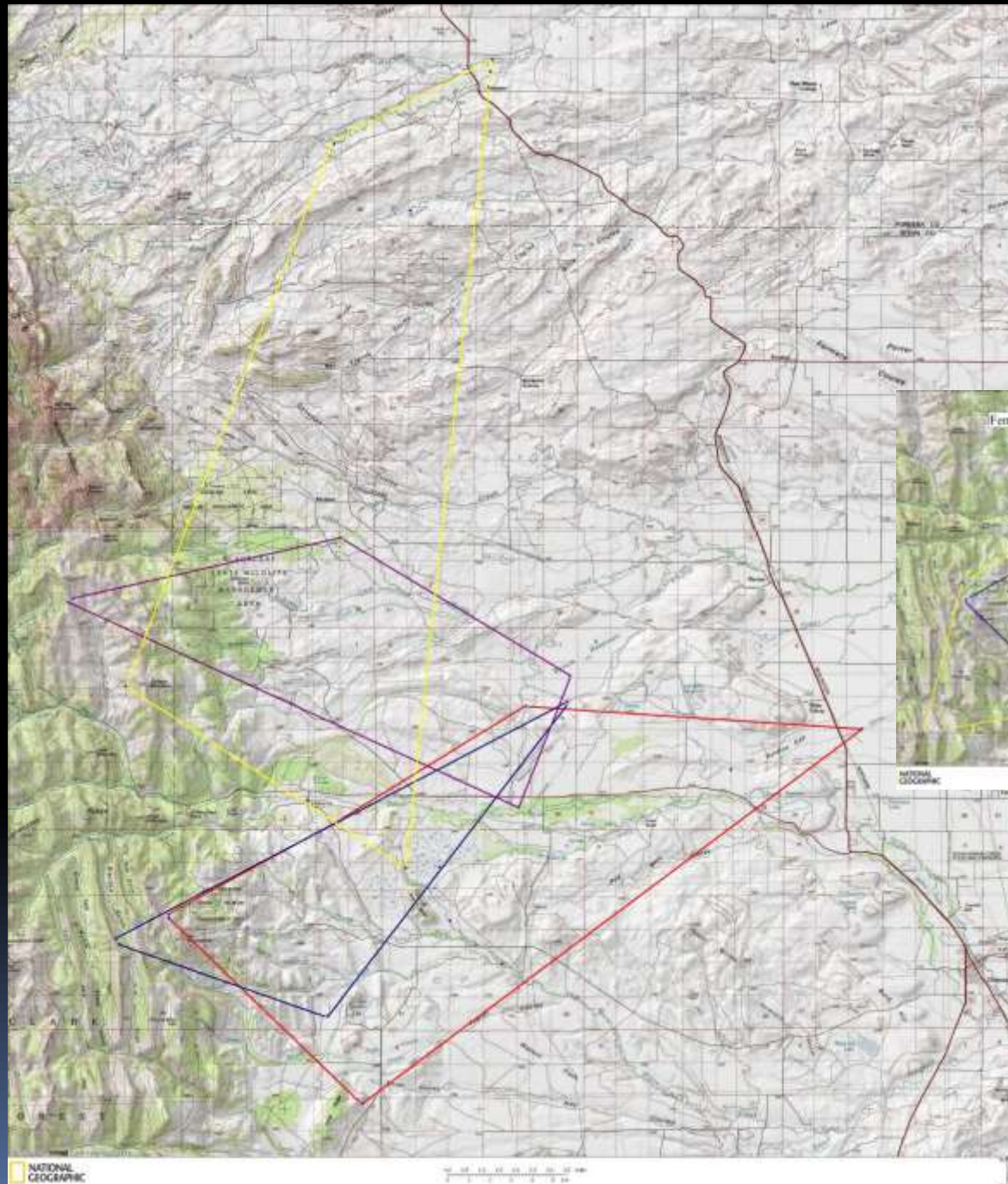


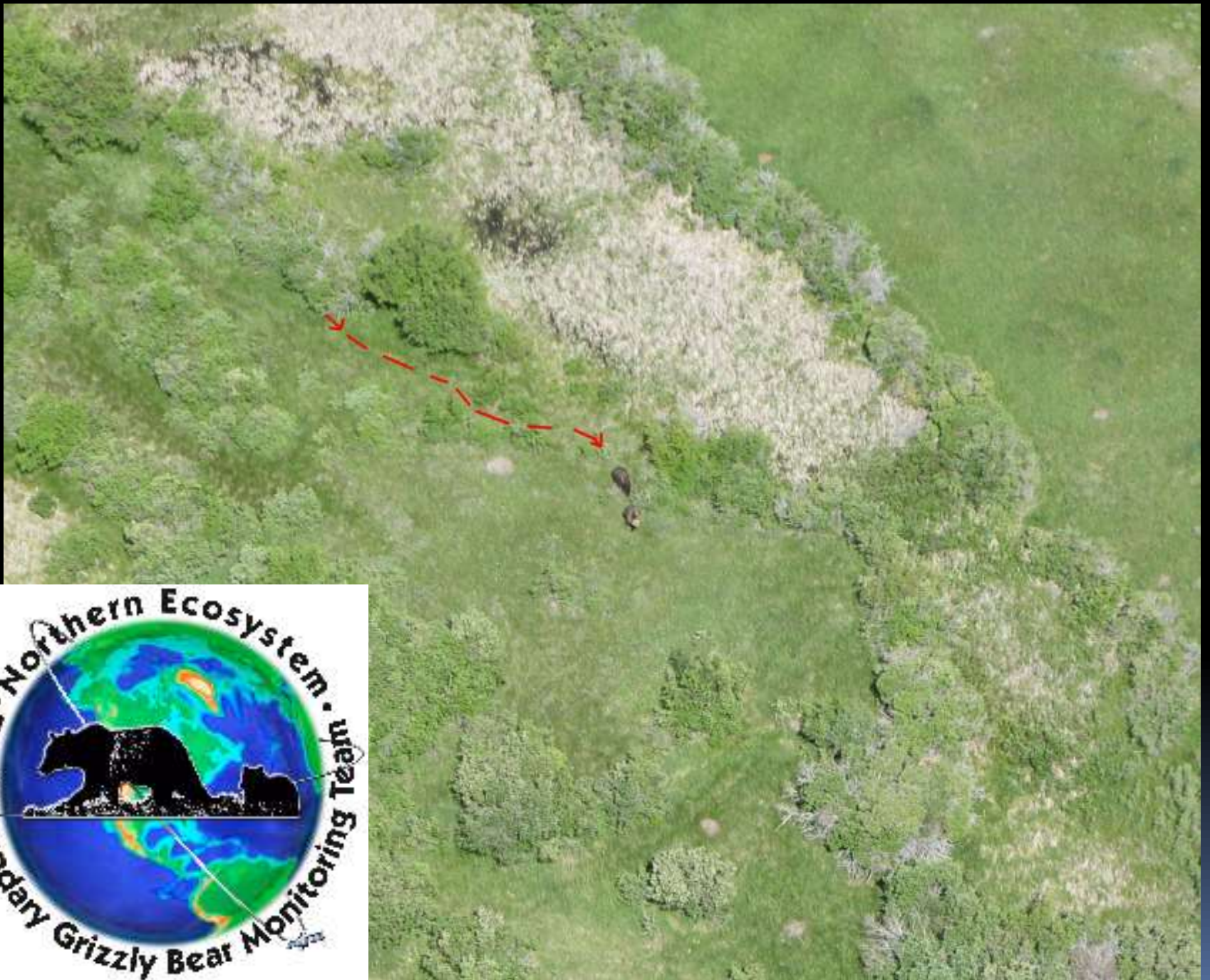
**RMF “Plains” Adult Female
Grizzly Bear G216 Annual
Kernal Home Range (95% CI)**





RMF adult and subadult female grizzly bear minimum home range boundaries and extent overlap.

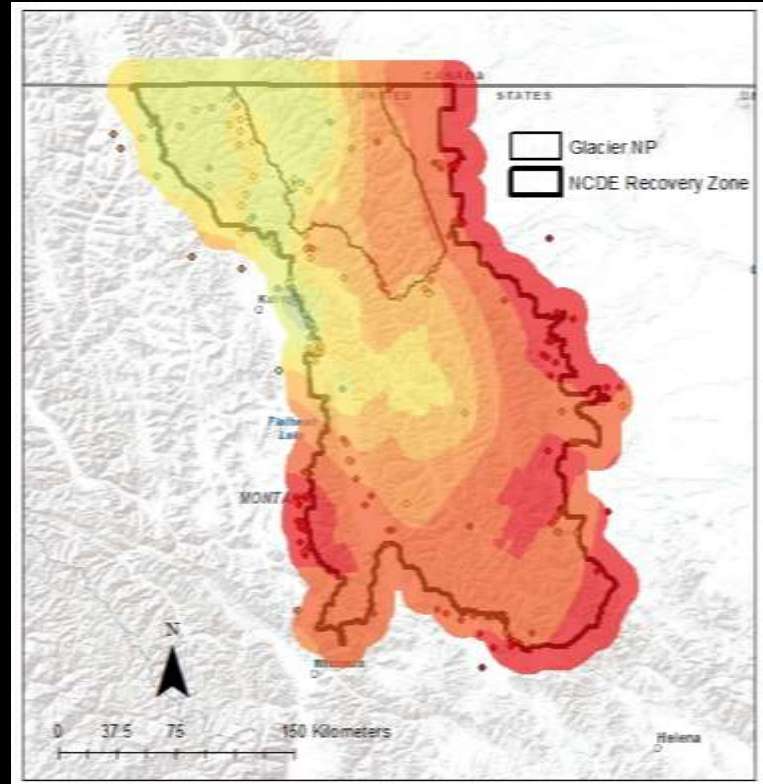




RMF spring grizzly
bear breeding season








Kriged surface of isotope values ($\delta^{15}\text{N}$) from all captured grizzly bears across the Northern Continental Divide Ecosystem, 2009–2011. Higher values (hotter colors) indicate greater amount of animal matter in diets of bears. Lower values (cooler colors) indicate a greater amount of plant matter in bear diets.







An aerial photograph of a prairie landscape. The terrain is a mix of green grass and brown, dry vegetation. A red arrow points from the text block to a small, dark, indistinct shape in the middle of the frame. Another red arrow points from the text block to a small, dark, indistinct shape in the lower-left quadrant of the frame.

Adult Female GBear G216 "Beenie"
with two cubs bedded with adult female
G653 "Cotton" in Wolf Coulee, in
open prairie grasslands on 9-12-2014

G653 "Cotton"





3 encounters on USFS lands







Examples of 2014 RMF Spring Season Grizzly Bear Conflict Sites



Examples of 2014 RMF Summer Season Grizzly Bear Conflict Sites



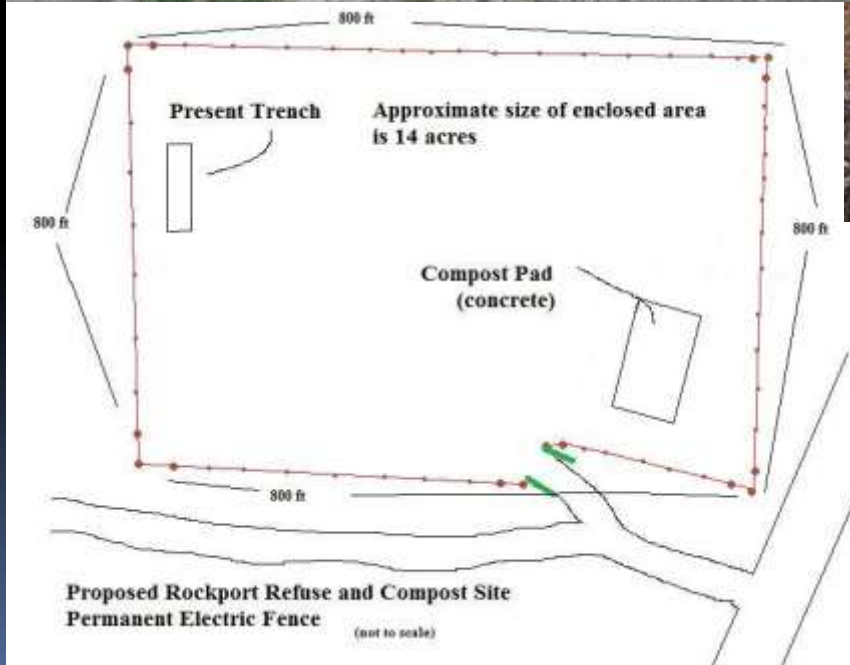
Examples of 2014 RMF Autumn Season Grizzly Bear Conflict Sites



Marias River: McCauley Ranch Calving Grounds Electric Fence



Rockport Colony : documented at least 18 individual grizzly bears using refuse site over the past five years, bringing bears into close proximity to residential homes and sheep.....access deterred



In 2014, a total of 6 grizzly bears were captured, marked and radio-transmitted to meet research (n5) and management (n1) objectives



