

The Reality of Recovery

Grizzly Bear Conservation in Wyoming



Wyoming Game and Fish Department
Large Carnivore Section



Role of Wyoming Game and Fish

- Member of the Interagency Grizzly Bear Study Team
 - Actively monitoring grizzly bear population and rectifying conflict situations since the 1970s
 - Increased role to analyze and publish data on current population demographics
- Responsible for ecosystem-wide monitoring of the population and conflict management and resolution throughout Wyoming outside of NPS and Wind River Reservation
 - This has been our role for more than 4 decades



Grizzly Bear Monitoring

- Trapping for monitoring purposes



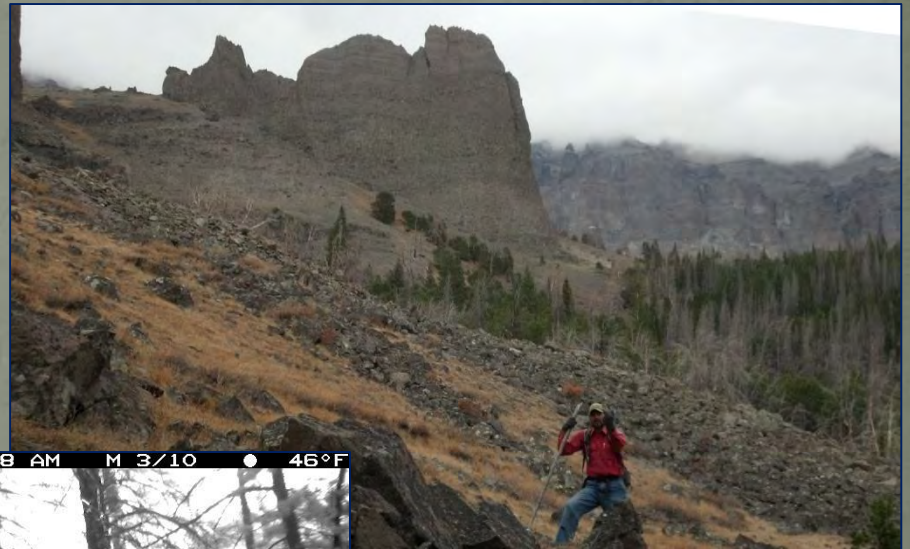
Grizzly Bear Monitoring

- Observation flights and documentation of grizzly bear distribution and reproduction (Recovery Criterion 2 and for population estimation)



Grizzly Bear Monitoring

- Myriad “other”



Grizzly Bear Conflict Resolution

- **Essential** component of large carnivore conservation and management
- Provide a timely response by trained professionals to deal with all forms of conflicts between grizzly bears and people
 - Personnel adopt a continuum of management responses to deal with conflict



Grizzly Bear Conflict Resolution

- Recovery has changed the game → more unique challenges



Bear Wise Wyoming

- The foundation for grizzly bear management and maintaining grizzly bears on the landscape



Bear Wise Wyoming

- The program was initiated here as the North Fork Bear Wise Community Program
- Public ownership, sacrifice, and fortitude brought us to where we are today → expansion beyond the community to a landscape level approach



STAY SAFE AND
KEEP BEARS WILD



**Thanks Wapiti residents
for properly storing
garbage, birdseed, and
livestock feed.**

It *ALL* Leads to One Moment.



Current State of Affairs



Grizzly Bear Management

- Nothing we do is mutually exclusive:
 - Monitoring and conflict resolution data used toward documentation of recovery and evaluation of GYE bears
 - Proactive efforts and educational programs within Bear Wise Wyoming are delivered by every member of the Large Carnivore Section throughout the state and local community, state, country, globe
 - **Team approach**, bolstered by public support



Monitoring Trends

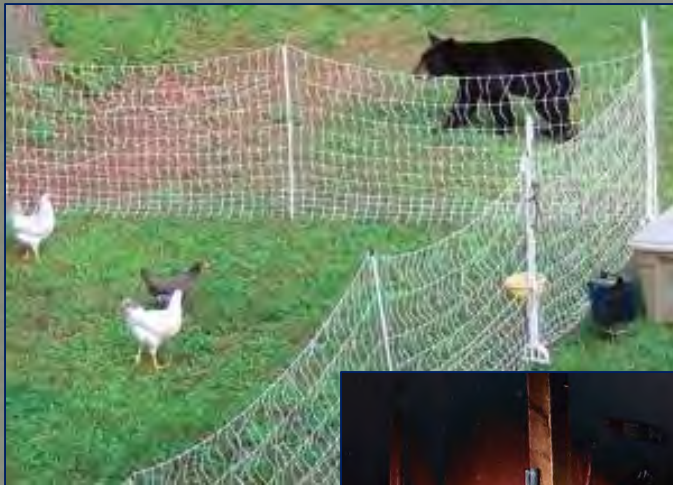
- Maintain a representative sample of bears – expansion increases the footprint
- Continue to evaluate the use of reversible immobilization drugs for safety of humans and ursids



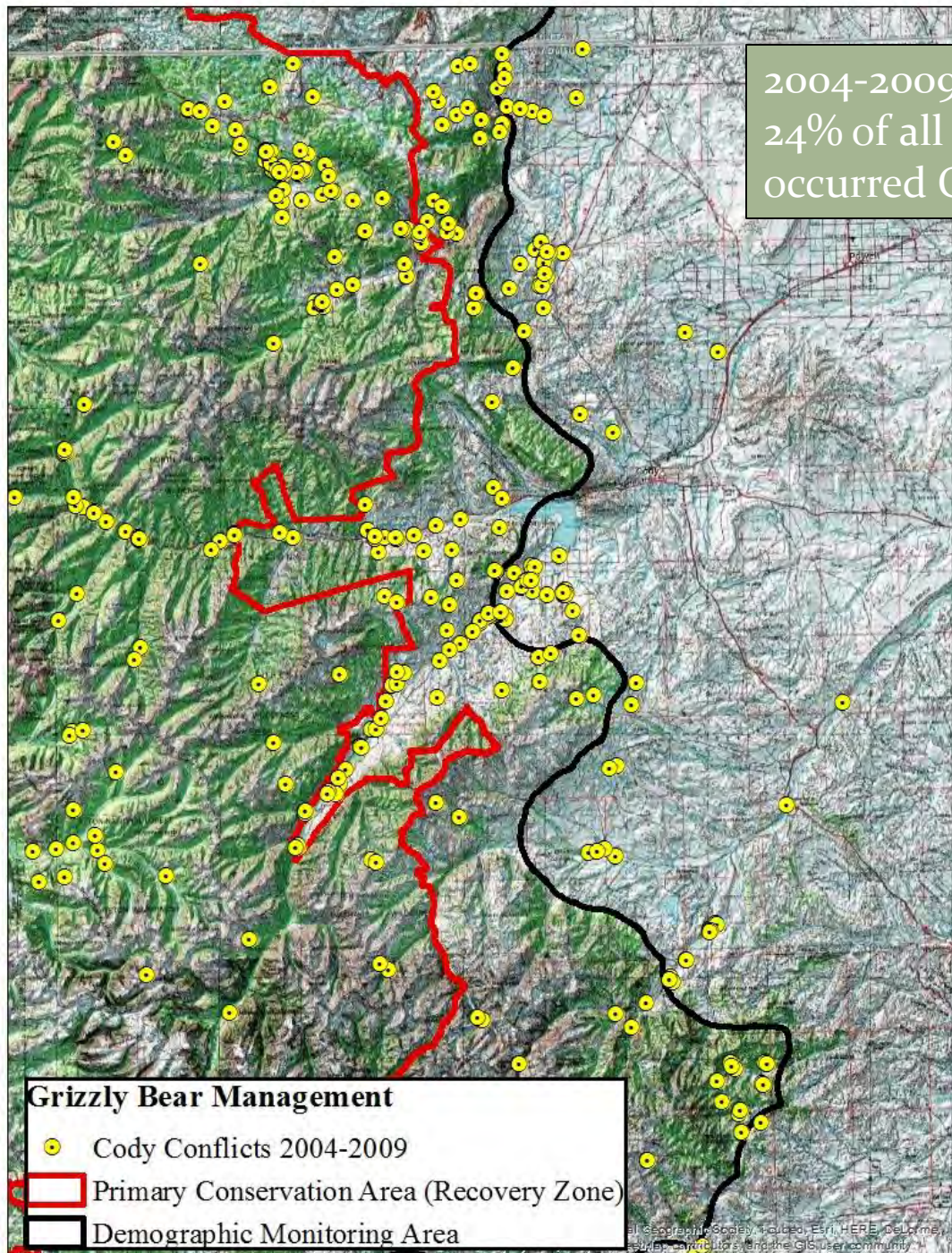


Conflict Management Trends

- An expanding front line → larger footprint for response and education



2004-2009:
24% of all conflicts
occurred OUTSIDE DMA



2010-2015:
53% of all conflicts
occurred OUTSIDE DMA

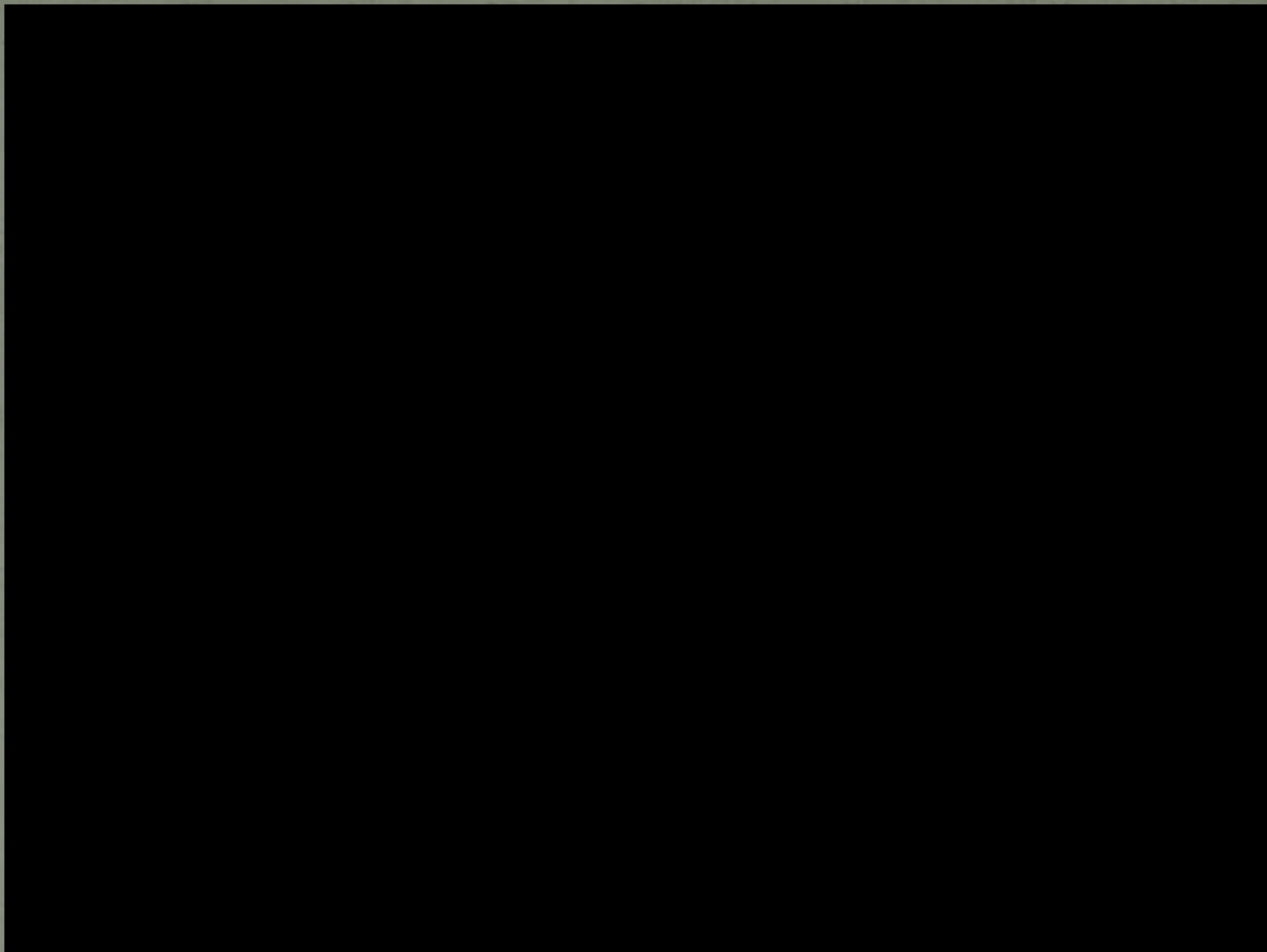
Grizzly Bear Management

- Cody Conflicts 2010-2015
- Primary Conservation Area (Recovery Zone)
- Demographic Monitoring Area

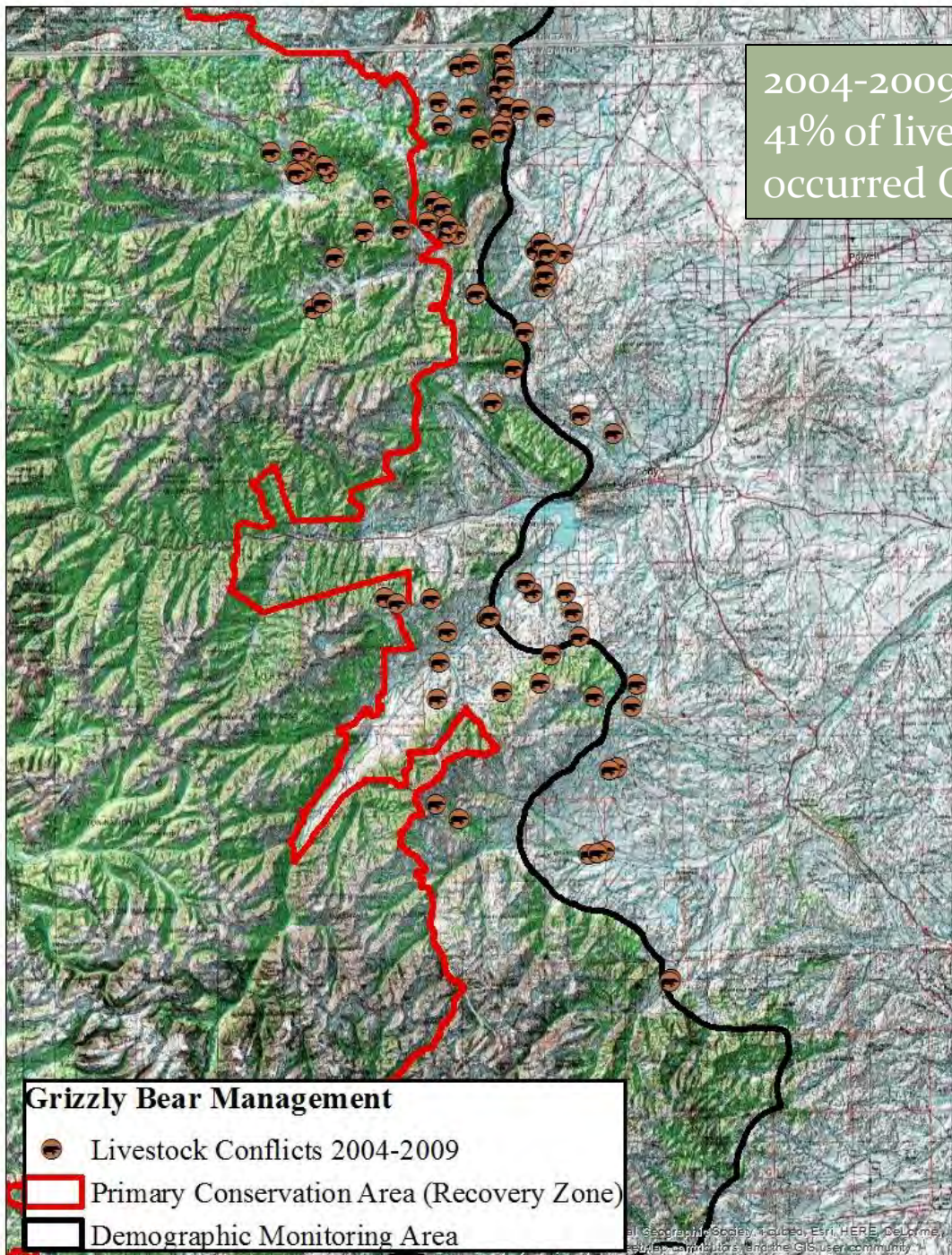


Expansion → Shift in Conflict Type

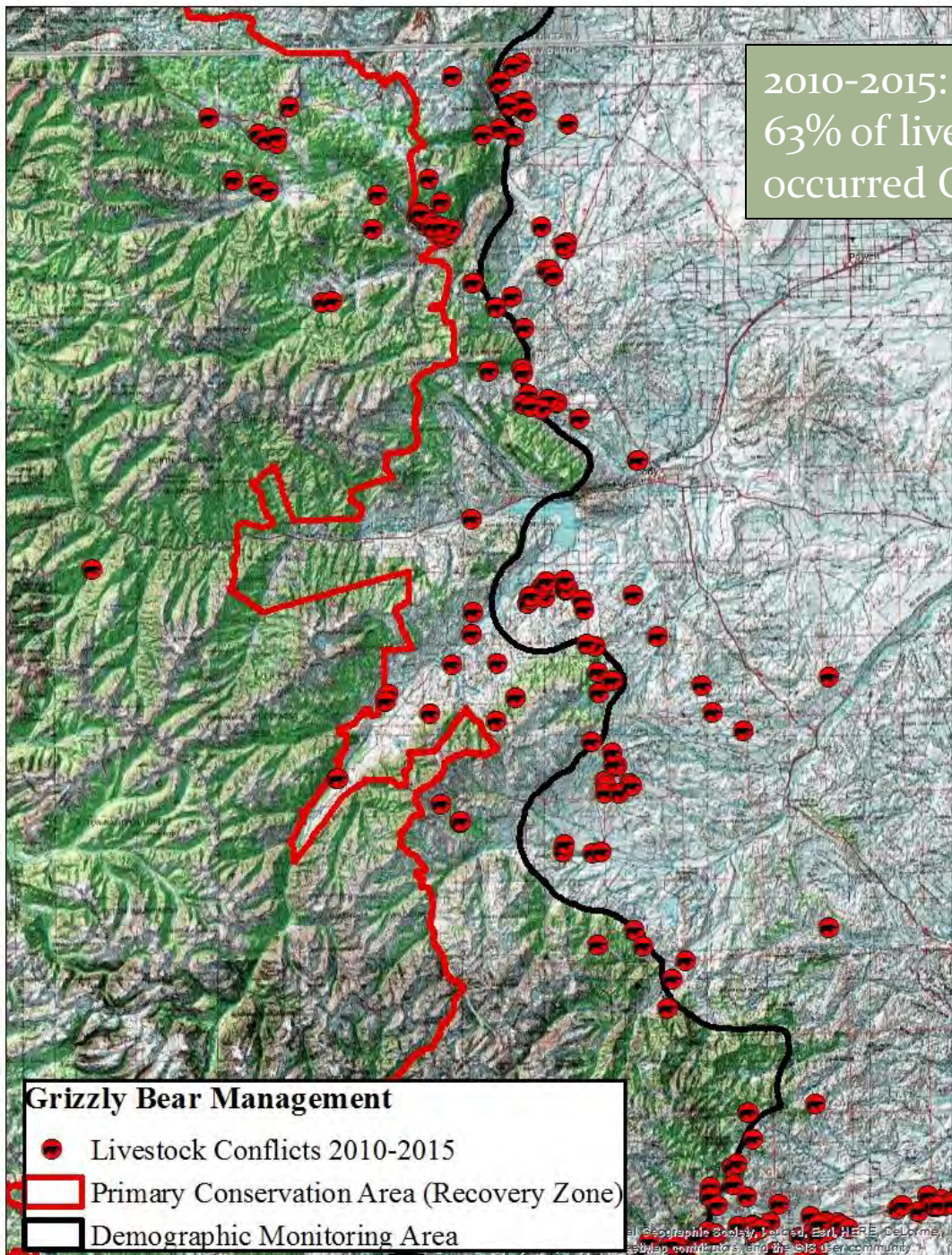
<u>Conflict Type</u>	<u>2004-2009</u>	<u>2010-2015</u>
Property Damage	163	83
Livestock Conflict	95	271
Garbage	51	95
Grizzly Bear Deaths*	26	16
Human Injury/Death	8	14



2004-2009:
41% of livestock conflicts
occurred OUTSIDE DMA



2010-2015:
63% of livestock conflicts
occurred OUTSIDE DMA



New and Unique Situations



When does Unique become the Norm?



Our Cup Runneth Over

- Recovery Zone → Demographic Monitoring Area
 - Things have definitely changed
 - Things were easier in retrospect



Always Thinking Outside the Box



Bear Wise Wyoming



Bear Wise Wyoming



Conclusions and Future

- Bears are recovered – bears will remain on the landscape
- It is an exciting and challenging forefront for what happens now as bears have reached carrying capacity and expand further into human dominated landscapes
- On the ground management/conservation currently taking place changes little depending on status
- Monitoring, conflict resolution and education remain vital



The One Constant



Fin

