

Grizzly Bear Management In Idaho



- History and How We Got Here
- Idaho's Grizzly Bear Management Plan
- Moving Forward



Grizzly Bear Plans Statewide

Managing grizzly bears as a federally listed species since listing in 1975

Idaho participated in development of several recovery plans where habitat and environmental conditions existed for grizzly bear recovery in Idaho

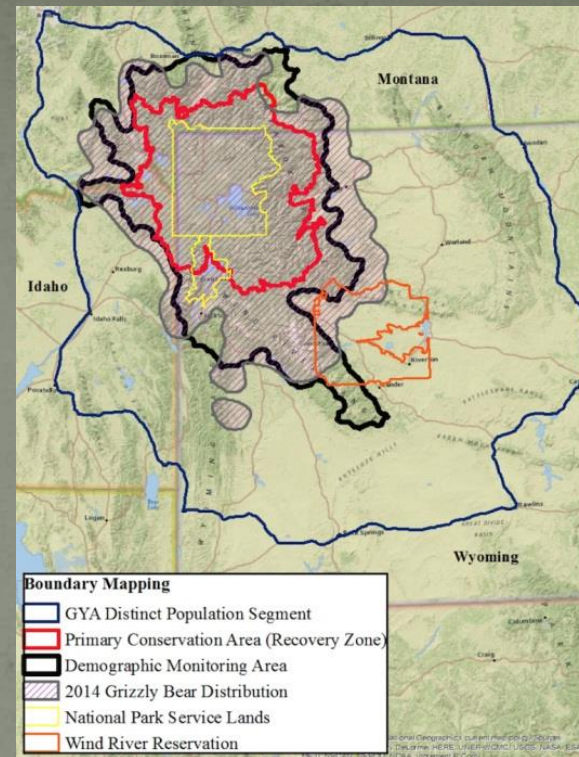
These recovery plans were approved in 1982 and revised in 1993

Recovery actions have been ongoing and coordinated management has continued in three recovery areas (GYE, Selkirks, Cabinet-Yaak)

Development of the Idaho Yellowstone Ecosystem Grizzly Bear Management Plan

- Delisting Advisory Team - representing a wide variety of interests
- Idaho Plan approved by legislature March 2002

Idaho's Plan

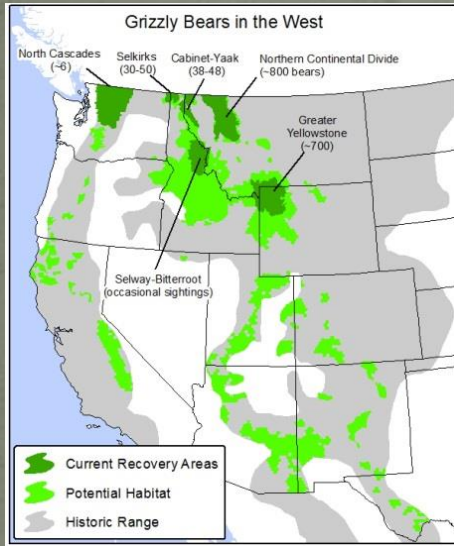


- Idaho's Plan recognizes the need for adaptive and responsive management over time – no end date
- Idaho's Plan is linked to the signed Conservation Strategy for the GYE population as a whole.
- Idaho's plan works in conjunction with the Conservation Strategy not independently

3 Key Goals of the Idaho Plan

1. Ensure the long-term viability of grizzly bears and preclude listing
2. Support expansion of grizzly bears beyond the PCA into areas that are biologically suitable and socially acceptable
3. Manage grizzly bears as a game animal, including allowing regulated hunting when and where appropriate

The Idaho Plan is Made Up of 6 Core Components



1 - Distribution and Occupancy

- Goal -

To manage a recovered grizzly bear population within suitable grizzly bear habitat in eastern Idaho and to provide for a population that is in a biologically suitable area and socially acceptable. Social acceptance of grizzly bears will depend on how management issues are approached and how much faith people have in managers.

- Focused On -

- Motorized Access Management
- Livestock and Human Conflicts
- Habitat Monitoring
- Habitat Restoration

2 - Population Monitoring

- Goal -

To develop and implement a science-based monitoring program that results in the data and tools necessary for IDFG to successfully manage grizzly bears.

- Focus On -

Actively support and be involved in Population Monitoring efforts for grizzly bears in the GYE

Invest in using the best data and information available for management

3 - Public Information and Education

- Goal -

To develop, implement, and disseminate a coordinated information and education program that is understandable and useful for the people who live, work, and recreate in grizzly bear habitat so as to minimize human/grizzly bear conflicts and to provide for the safety of people.

Plan Identified Seven Recommendations for I & E

These recommendations Focus on 3 Primary Outcomes

- Create a full time position that is responsible for providing Outreach and Education
- Produce and share a wide array of bear educational materials
- Coordinate I & E efforts and materials with other partners across the GYE

4 - Conflict Management

- Goal -

To minimize the potential for human/grizzly bear conflicts while maintaining traditional residential, recreational, and commercial uses within Eastern Idaho, and to respond quickly, appropriately, and efficiently when conflict situations arise.



- The State established protocols for dealing with grizzly conflicts in Eastern Idaho
 - Human/Grizzly Bear Conflicts
 - Livestock/Grizzly Bear Conflicts



5 - Harvest Management

- Goal -

To allow for regulated harvest of grizzly bears while maintaining a viable and self-sustaining population.

Manage grizzly bears as a game animal

Allow regulated hunting when and where appropriate

6 - Program Cost and Funding

- Goal -

Seek out ways to ensure that there is adequate long-term funding to meet the objectives identified in the Conservation Strategy and Idaho's Plan

The plan recognizes the value of a viable, long-term grizzly bear program and the need to ensure adequate funding for responsible grizzly bear management.

Moving Forward

Good news is that Idaho has already invested a great deal into Grizzly Bear management and has already implemented most of priorities within the Conservation Strategy and the Idaho Management Plan

Implementation

- Maintain robust and progressive Outreach and Education Program, includes having had IDFG personnel hold the IGBC Communications position for the last 15 years
- Hired Permanent GYE Grizzly Bear Biologist Position
- Continue support of and active role in IGBST
- Maintain Active Partnerships with a Focus on Grizzly Bear Management and Conservation
- Continue to seek out new and innovative solutions to conflict challenges
- Continue training and implementation of Wildlife Human Attack Response Team (WHART), much of this team's responsibility is dealing with Human/Grizzly Bear encounters
- In 2002 Idaho spent \$21,000 on Grizzly Bear Management, in 2016 this total was approximately \$130,000, we are committed to the success of Grizzly Bears in the GYE
- Following mortality metrics identified by the CS, continue to evaluate grizzly bear hunting options for the sportspersons of Idaho

The Idaho GYE Grizzly Bear Management Platform

1. Information, Education, and Outreach
2. Population Monitoring and Management, Research, and Data Collection
3. Conflict Management
4. Habitat Management and Conservation

Management Once Delisted

Idaho will have the ultimate authority and obligation for management of grizzly bears in Idaho

Outside PCA – Population directed by State management plans

Inside PCA – Population management guided by the Conservation Strategy

Idaho's Plan recognizes the need for adaptive and responsive management over time – no end date