

YELLOWSTONE NATIONAL PARK
Perspective's on Habitat Standards



2016 Draft Conservation Strategy

- **Population Standards Updated Significantly**
- **Habitat Standards Remained Mostly Unchanged despite Significant changes in human use of the GYE**

Conservation Strategy

➤ Development of Conservation Strategy & Habitat Standards

- Began in 1993**
- Visitation to YNP was 2.9 million visits**
- 2016 YNP had 4.3 million visits**

Conservation Strategy

➤ Habitat Objectives

- 1. Reduce Human-Caused Grizzly Mortality**
- 2. Reduce Access Related Disturbances**

Reduce Human-caused Grizzly Mortality

- **In 1970 (visitation 2.3 million visits)**
 - **23 Human-caused Grizzly Mortality's inside YNP**
 - **72% of the Human-caused Mortality's in GYE**
- **Obvious YNP had a Problem**

Reduce Human-caused Grizzly Mortality

- **Bear-proof Infrastructure (1970)**
 - **Garbage Cans & Dumpsters**
 - **Food Storage Boxes**
 - **Food Storage Poles**
- **Public Outreach**
- **Enforcement of Food Storage Regulations**

Reduce Human-caused Grizzly Mortality

- **Intensive Management**
 - **Food Storage Patrols**
 - **Haze Bears from Developments & Campgrounds**
 - **Ungulate Carcass Management**
 - **Short Term Closures of Trails and Campsites**

Reduce Human-caused Grizzly Mortality

- **In 2016 (visitation 4.3 million)**
 - **2 Human-caused Grizzly Mortality's inside YNP**
 - **4% of the Human-caused Mortality's in GYE**

Reduce Human-caused Grizzly Mortality

➤ YNP & GTNP Comprise

- 40% of Primary Conservation Area
- 20% of the DMA
- 10% of Human-caused Mortality's

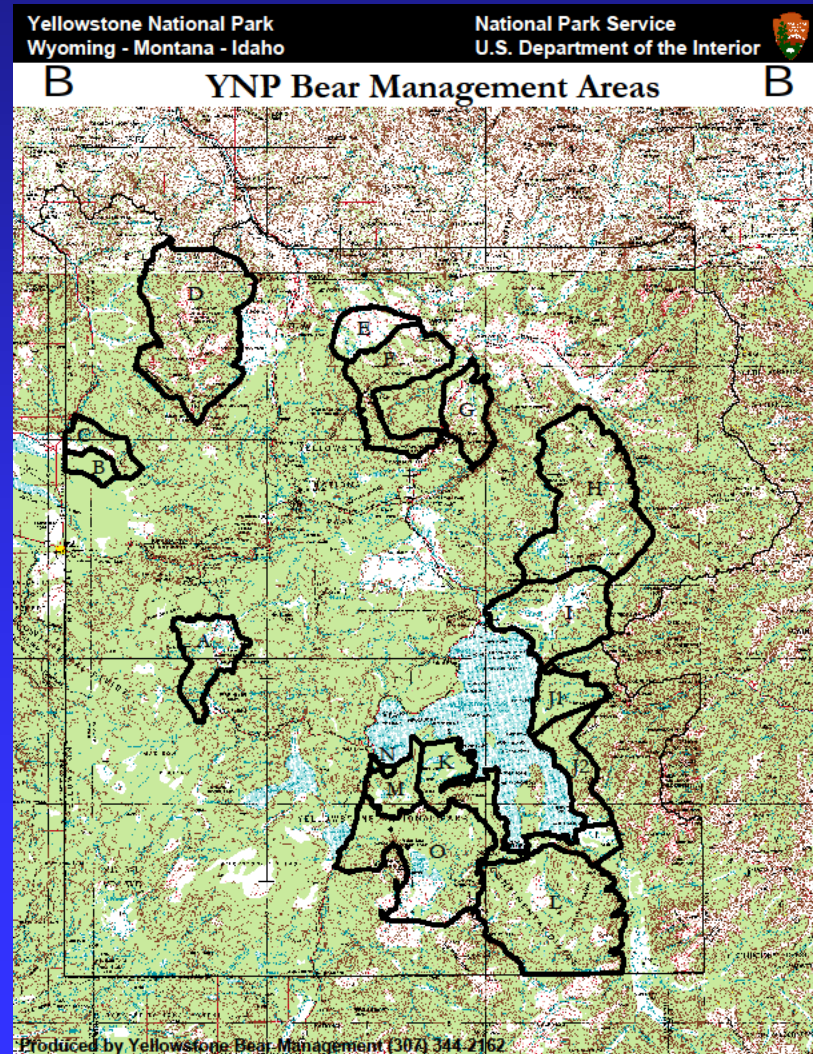


Grizzly Bear Cub Production & Mortality In Yellowstone National Park Last 24 years (1993 – 2016)

- **622 Cubs Counted in YNP**
- **23 Human-caused Grizzly Bear Mortalities of all age classes (12 management removals 8 vehicle strike, & 3 power-line electrocution)**

Reduce Access Related Disturbances

- Established Bear Management Areas in 1982
 - Restricts Access to 464,638 acres (21%) of YNP on Seasonal Basis



Modifying Habitat Standards 2017

1. YES Managers keep an Open Mind
2. Take a Closer Look at Leading Causes of Mortality
3. Take a Closer Look at Locations of Mortality
4. Develop Most Efficient Method to Address the Types and Locations of Mortality