

Interagency Grizzly Bear Study Team Research and Monitoring Summary 2017



Photo: Jake Davis

Study Team Members

Dan Bjornlie (WGFD)

Justin Clapp (WGFD)

Hillary Cooley (FWS)

Cecily Costello (MTFWP)

Kevin Frey (MTFWP)

Jennifer Fortin-Noreus (FWS)

Kerry Gunther (NPS)

Dave Gustine (NPS)

Mark Haroldson (USGS)

Pat Hnilicka (FWS)

Curtis Hendricks (IDFG)

Jeremy Nicholson (IDFG)

Dan Thompson (WGFD)

Dan Tyers (USFS)

Frank van Manen (USGS)

Kate Wilmot (NPS)



Overview

- Population estimates and trend
- Occupancy by females with offspring
- Mortalities and mortality rates

Some results are preliminary

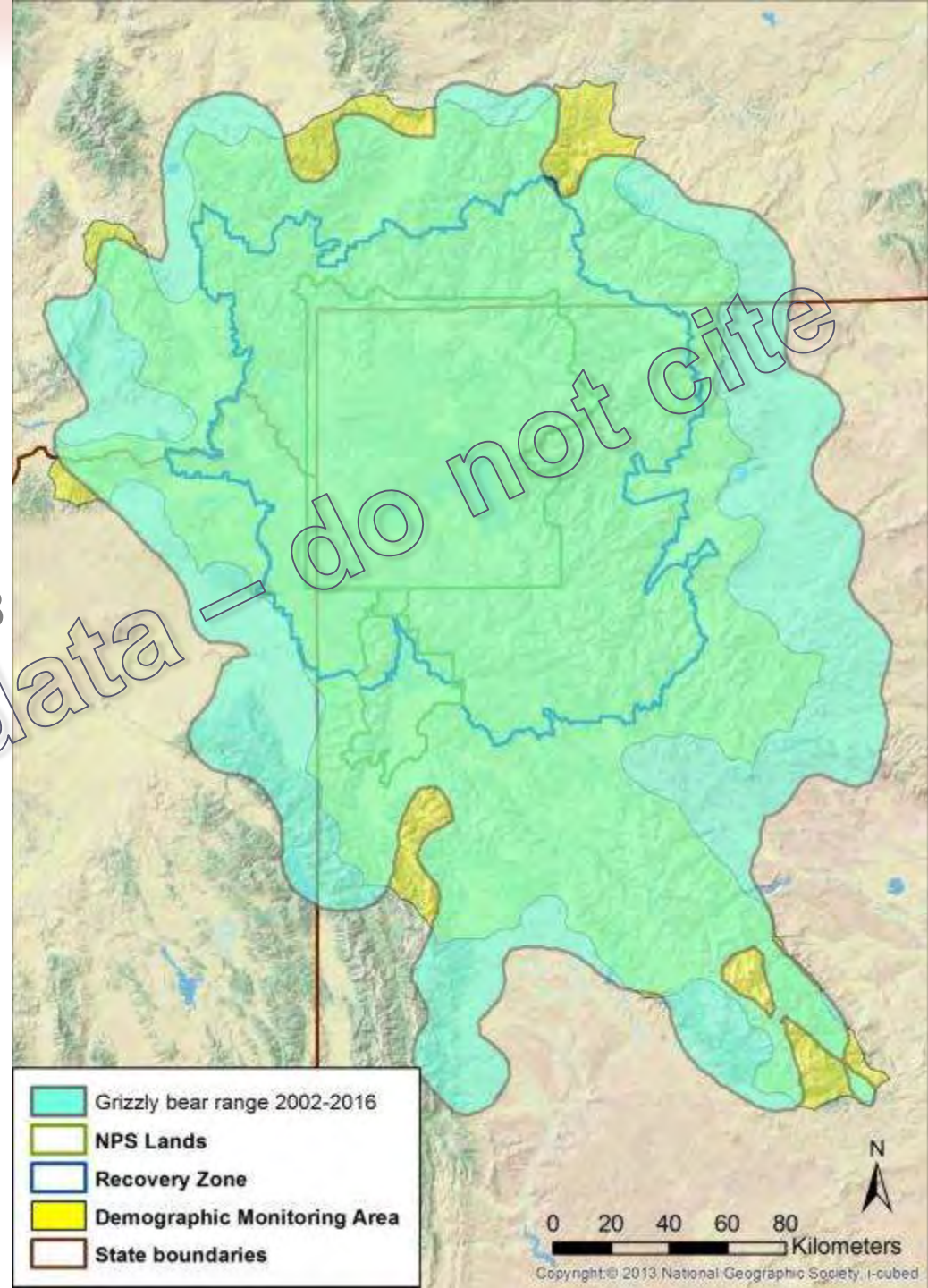
Greater Yellowstone Ecosystem

- National Parks = 10,344 km²
- Primary Conservation Area/Recovery Zone = 23,828 km²
- Demographic Monitoring Area (DMA) = 49,931 km²



Greater Yellowstone Ecosystem

- National Parks = 10,344 km²
- Primary Conservation Area/Recovery Zone = 23,828 km²
- Demographic Monitoring Area (DMA) = 49,931 km²
- Occupied range (2002-2016) = 64,849 km²



Population and Trend Estimation

Number of females with cubs: Chao2 estimator

- Annual counts based on Knight et al. (1995) “rule set”: sightings of unique females with cubs
- Cherry et al. (2007) applied estimator to correct for sighting heterogeneity (Chao2)
- Trend over time

Observation flights 2017



Round 1, Area 17B, 07/19/2017 *Photo: WGFD*

Observation flights 2017

- **54 aerial observation areas**

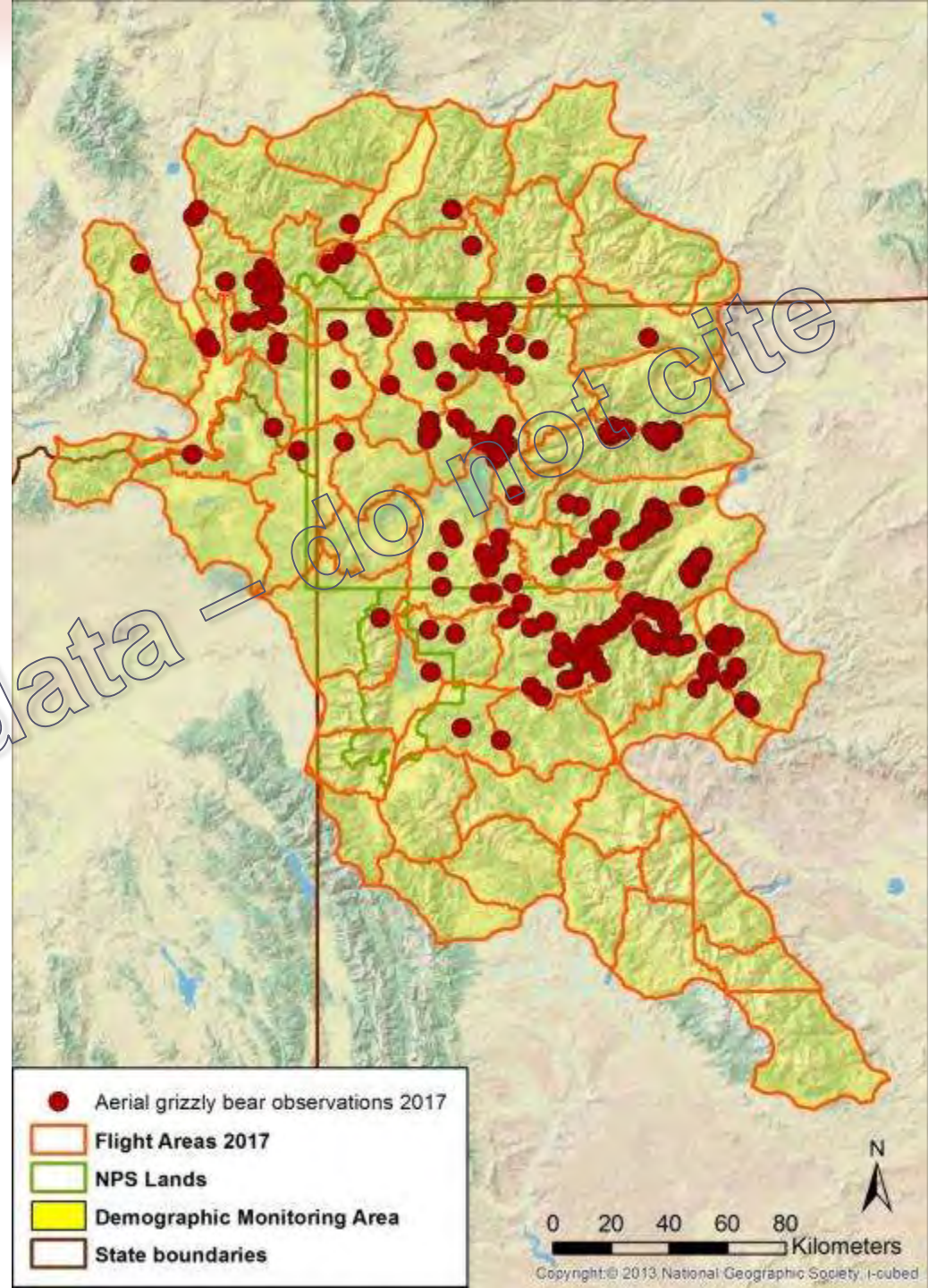
Round 1: 54 units

Round 2: 40 units

- **184 survey hours**

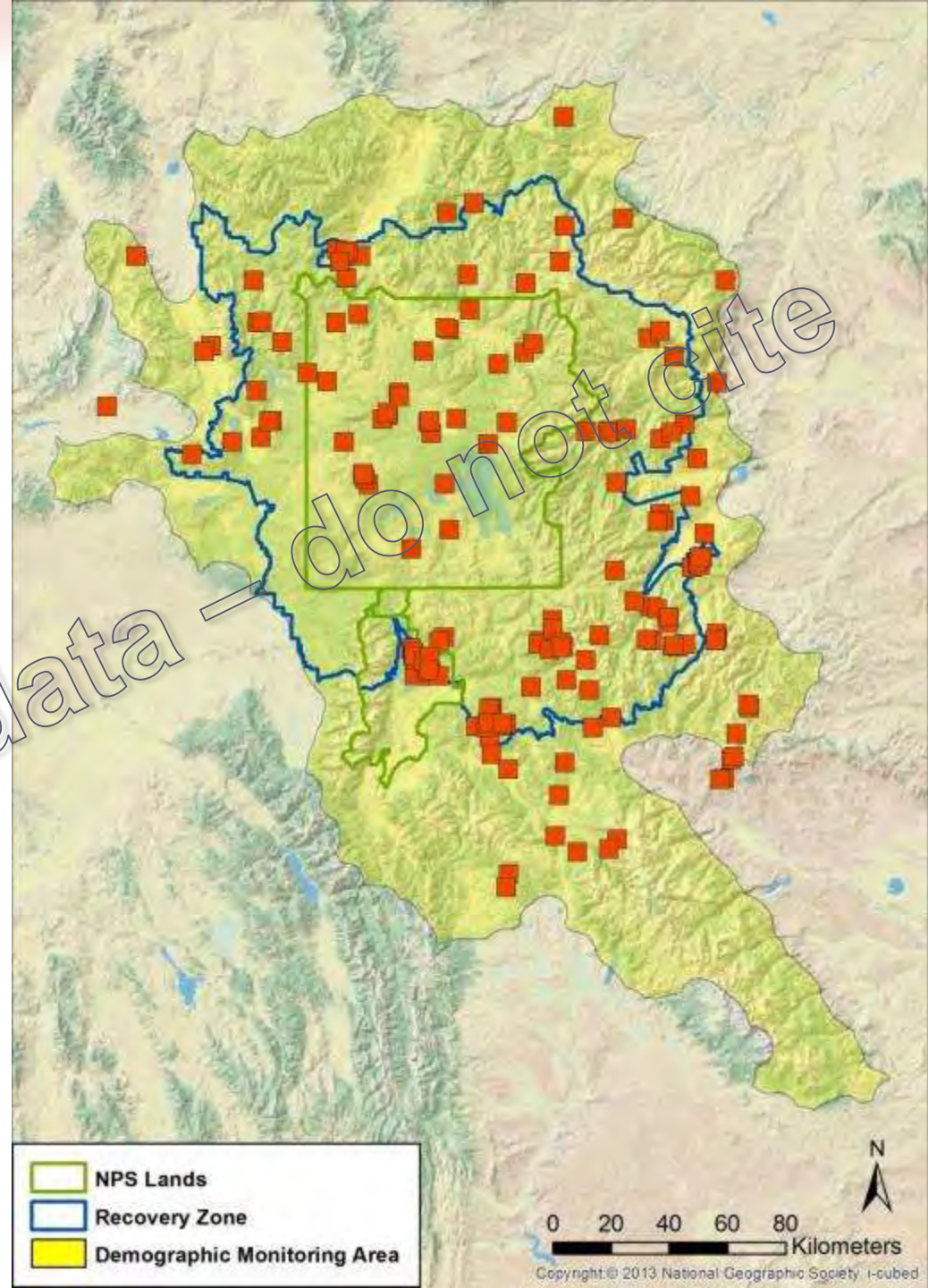
- **369 groups**

510 grizzly bears



Females with cubs 2017

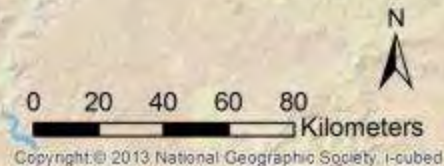
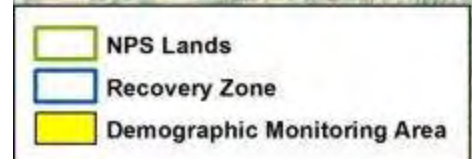
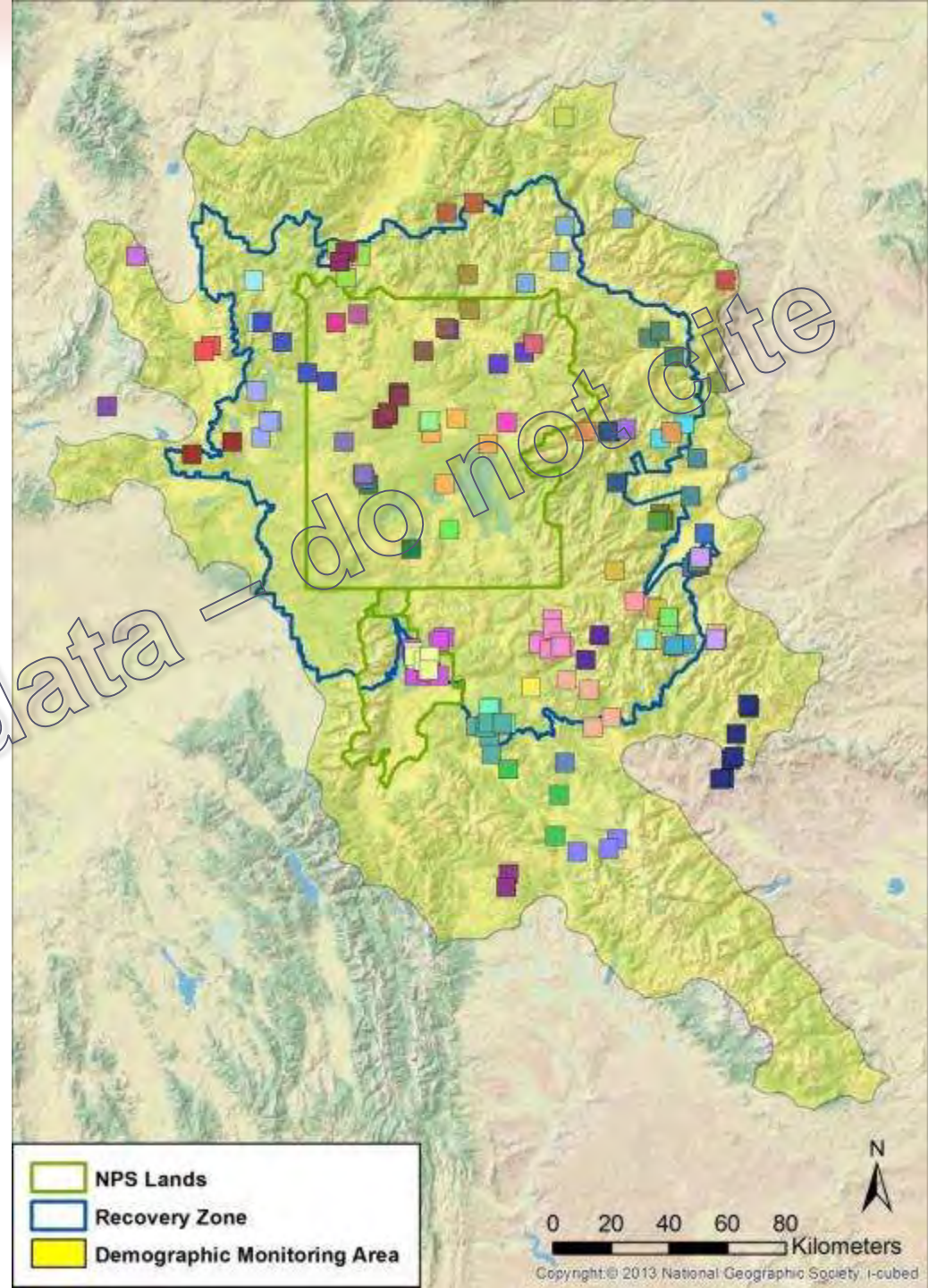
- **180 observations**
115 aerial (64%)
65 ground (36%)



Preliminary data - do not cite

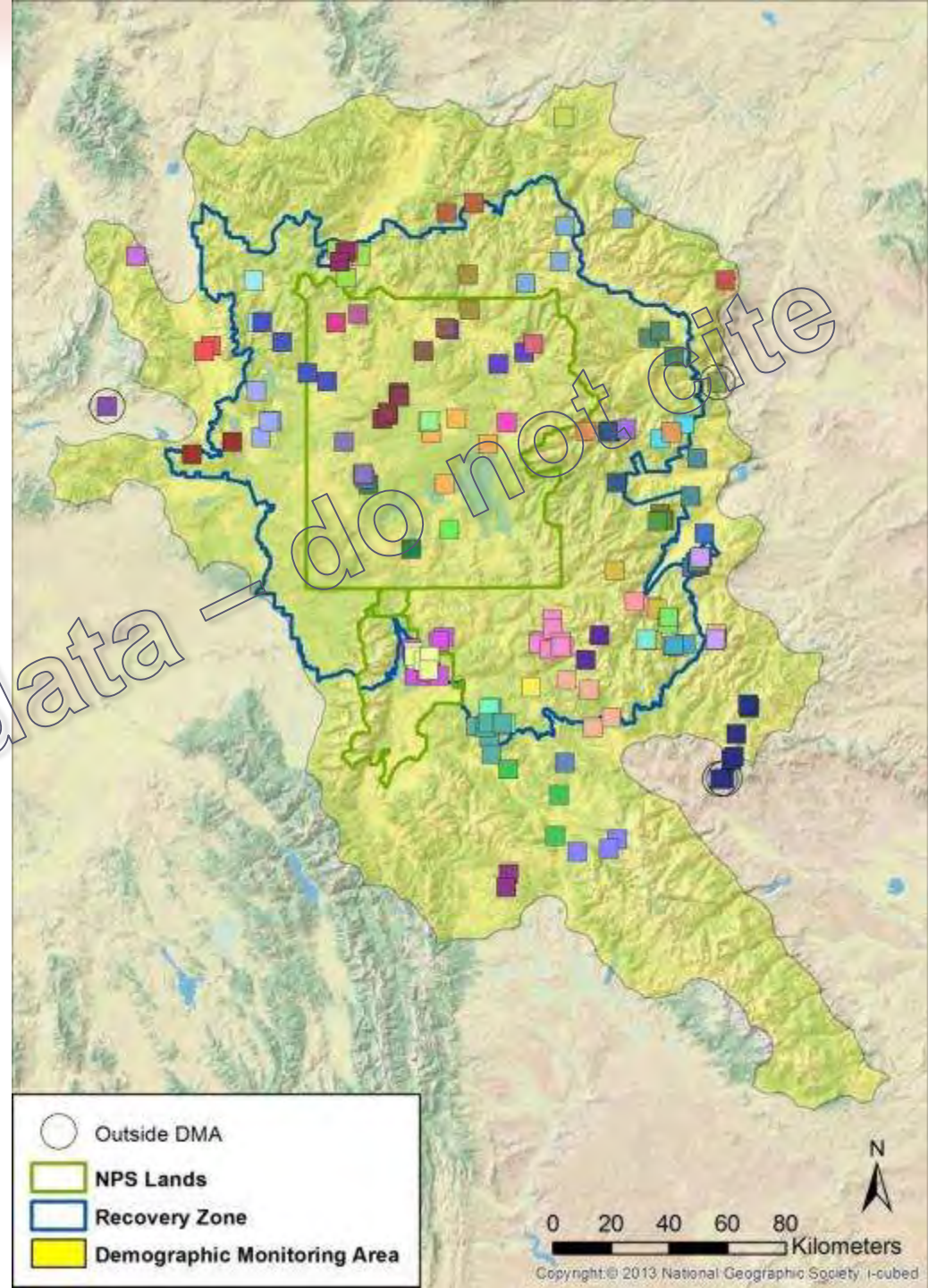
Females with cubs 2017

- 180 observations
115 aerial (64%)
65 ground (36%)
- 58 unique females with cubs
Mean litter size = 1.98
15 single (25.9%)
30 twins (51.7%)
12 triplets (20.7%)
1 quadruplet (1.7%)

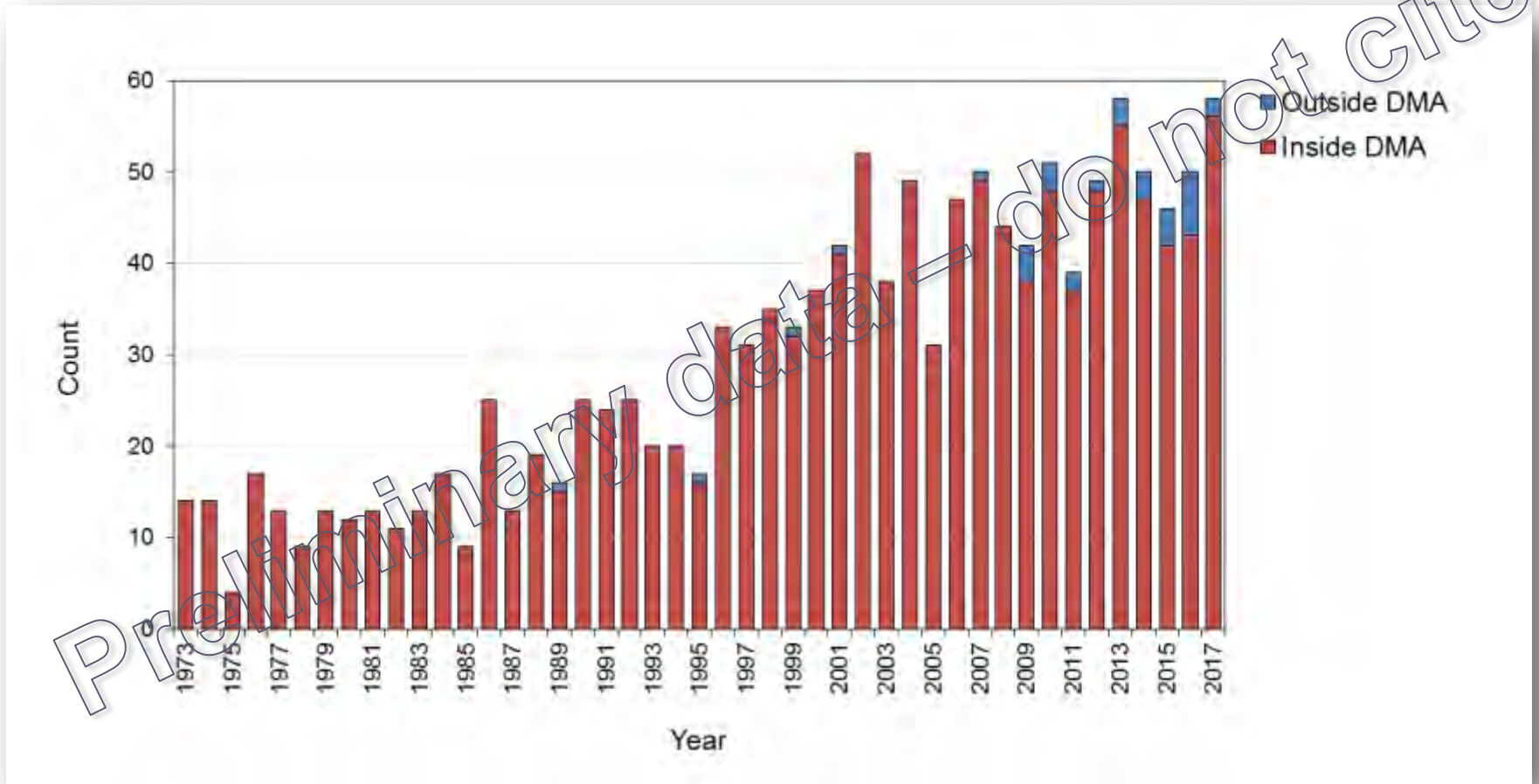


Females with cubs 2017

- 180 observations
115 aerial (64%)
65 ground (36%)
- 58 unique females with cubs
Mean litter size = 1.98
15 single (25.9%)
30 twins (51.7%)
12 triplets (20.7%)
1 quadruplet (1.7%)
- **57 in DMA**



Initial sightings of females with cubs inside and outside DMA 1973-2017

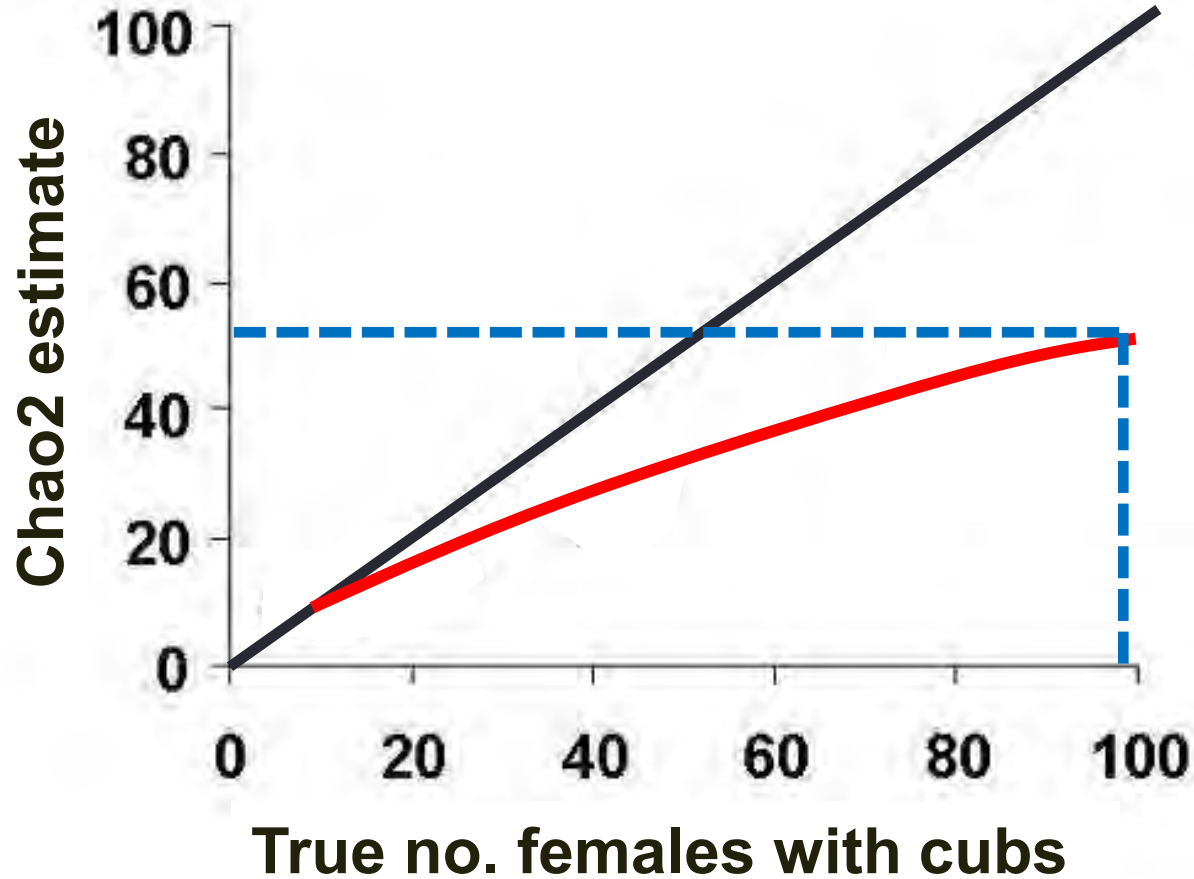


Number of females with cubs 2017 (DMA only)

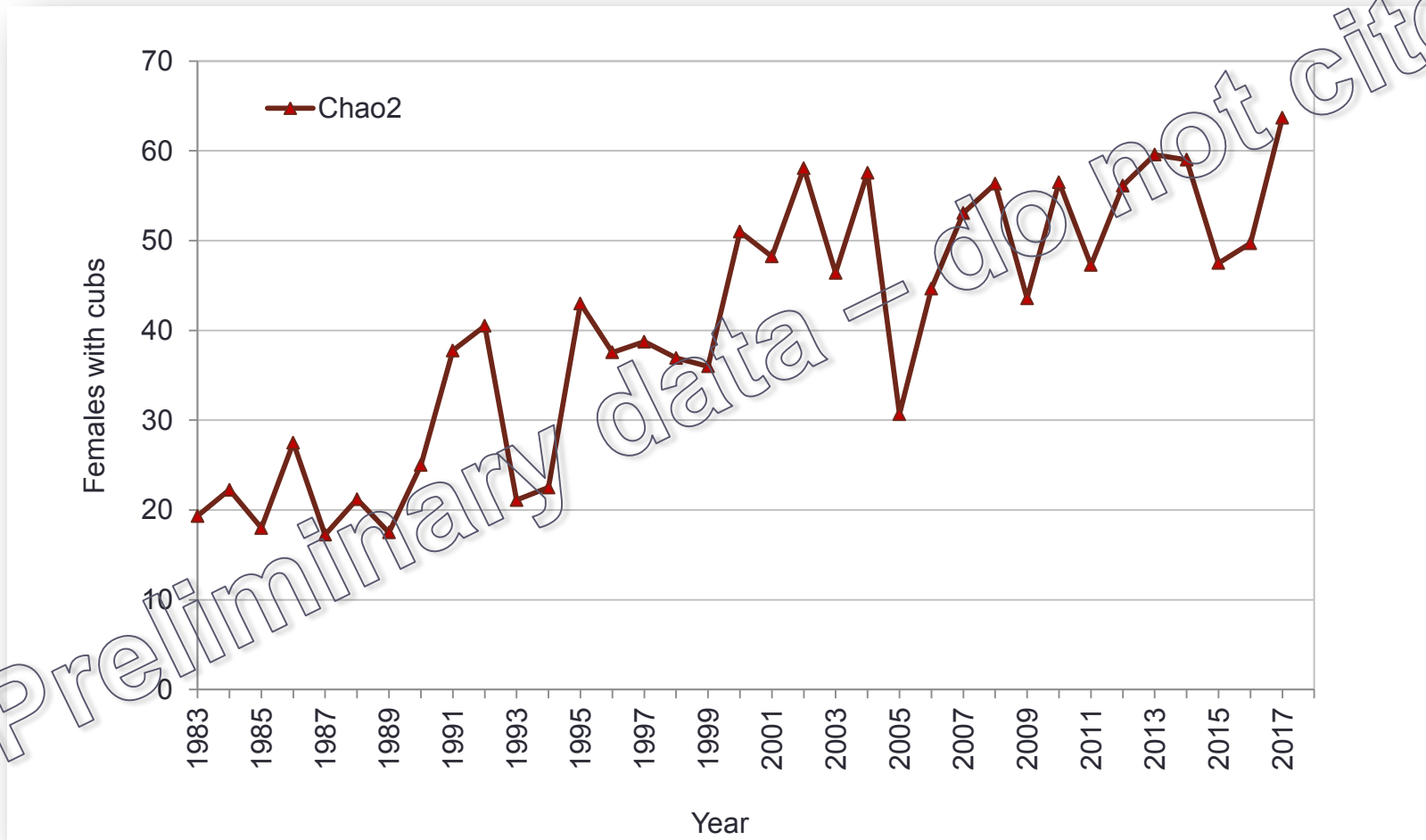
Parameter	Estimate
Unique females with cubs	57
Chao2	64
Model-averaged Chao2	57

Preliminary data - do not cite

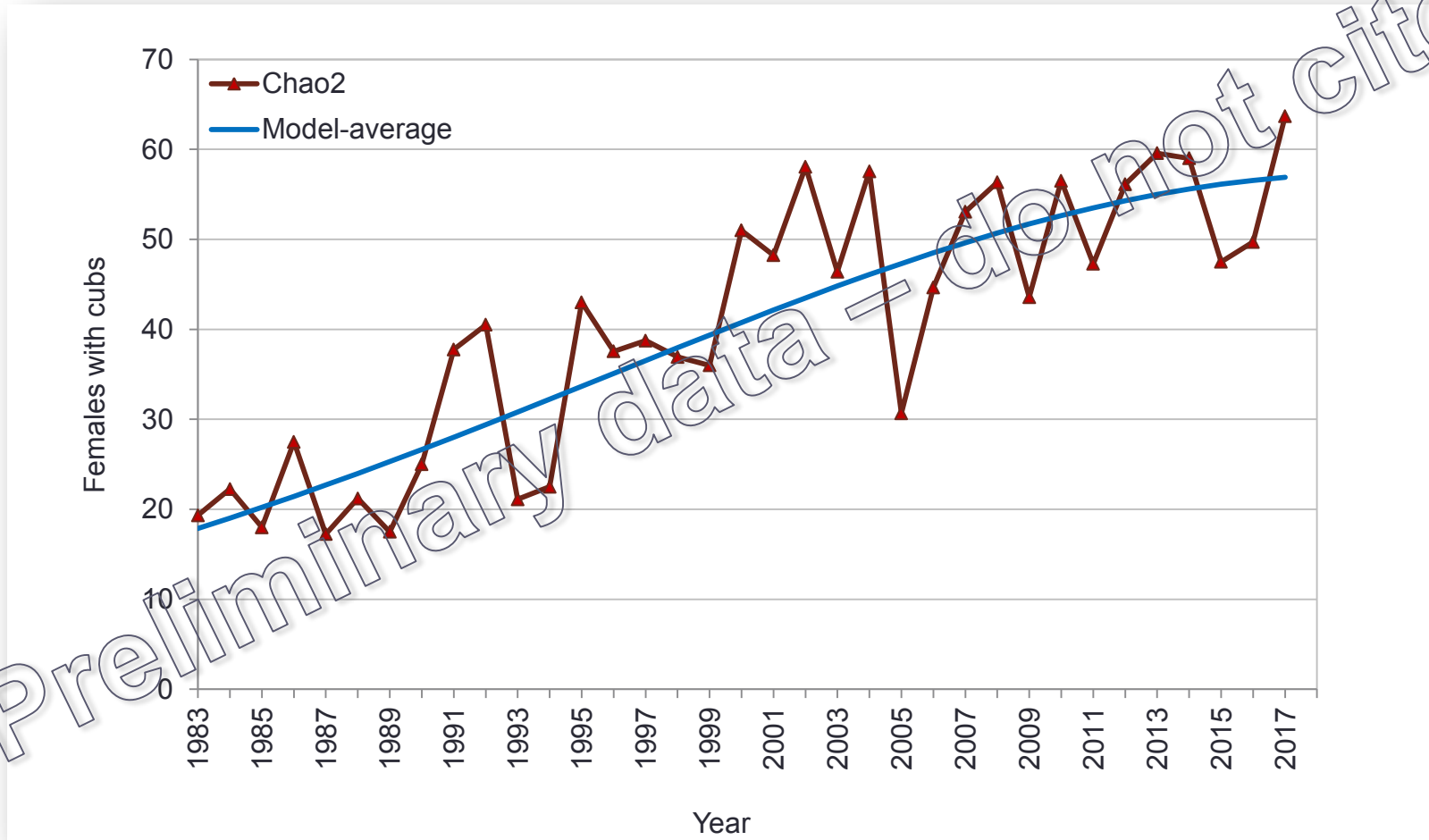
Bias in Chao2 estimator



Annual estimates of females with cubs 1983-2017 (DMA only)



Trend in annual estimates of females with cubs 1983-2017 (DMA only)



Total population estimate (DMA only)

Derived from:

- Model-averaged Chao2 estimate of number of females with cubs
- 2002-2011 vital rates and derived age structure to estimate population segments

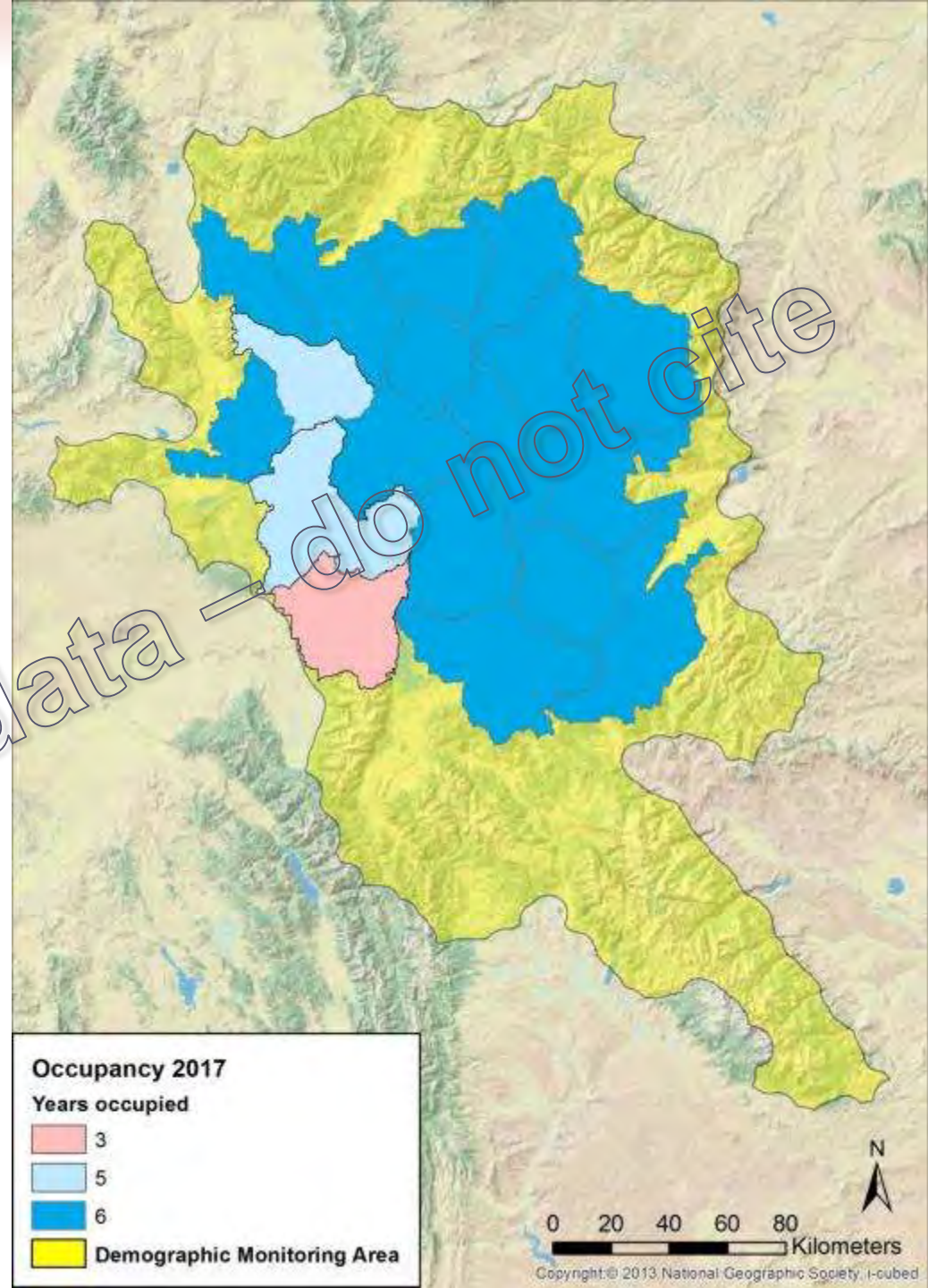
Total population estimate 2017 (Chao2 estimator; DMA only)

Population segment	Estimate
Independent females (≥ 2 yrs old)	250
Independent males (≥ 2 yrs old)	250
Dependent young (cubs and yearlings)	217
Total	718

Occupancy by Females with Young

Occupancy by females with young (cubs, yearlings, or 2-year-olds) 2017

- 17 of 18 Bear Management Units (BMUs) occupied during 2017)
- 18 of 18 BMUs occupied at least 3 of last 6 years (2012-2017)



Mortalities and Mortality Rates



Photo: J. Smith, D. Scott, MTFWP

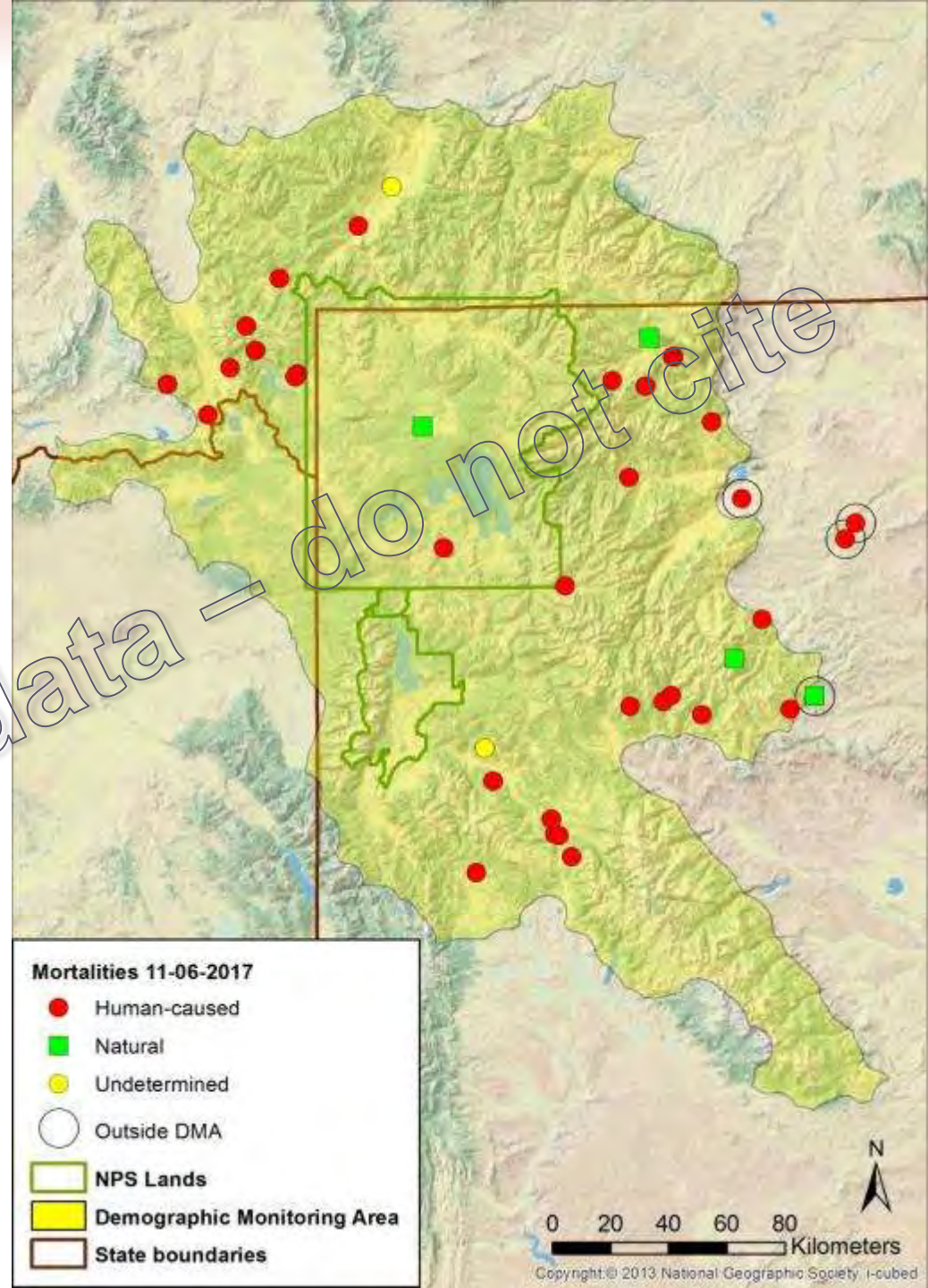
Known and probable mortalities 2017

- **46 in DMA**

 - 39 human-caused

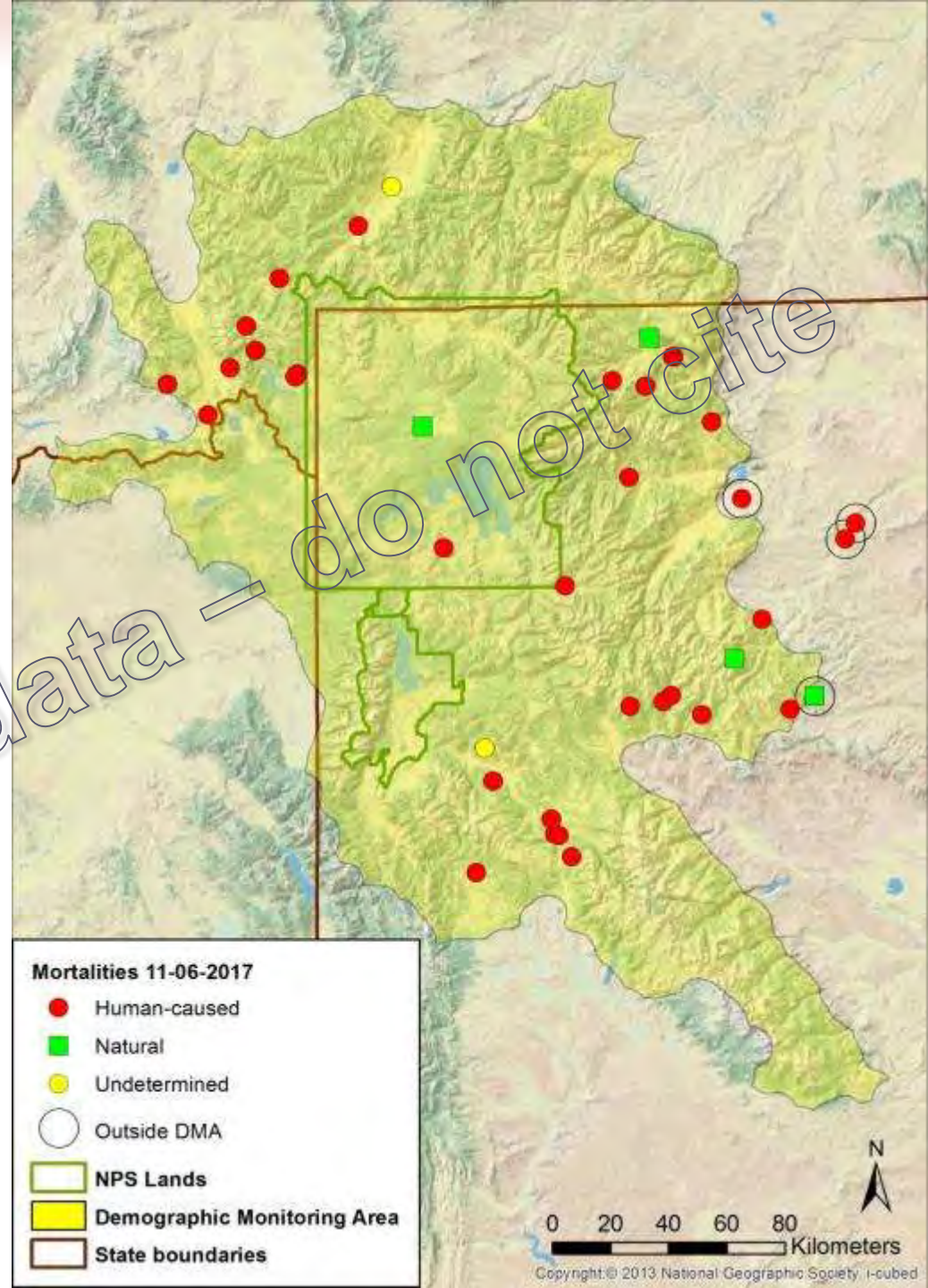
 - 3 natural

 - 4 undetermined cause



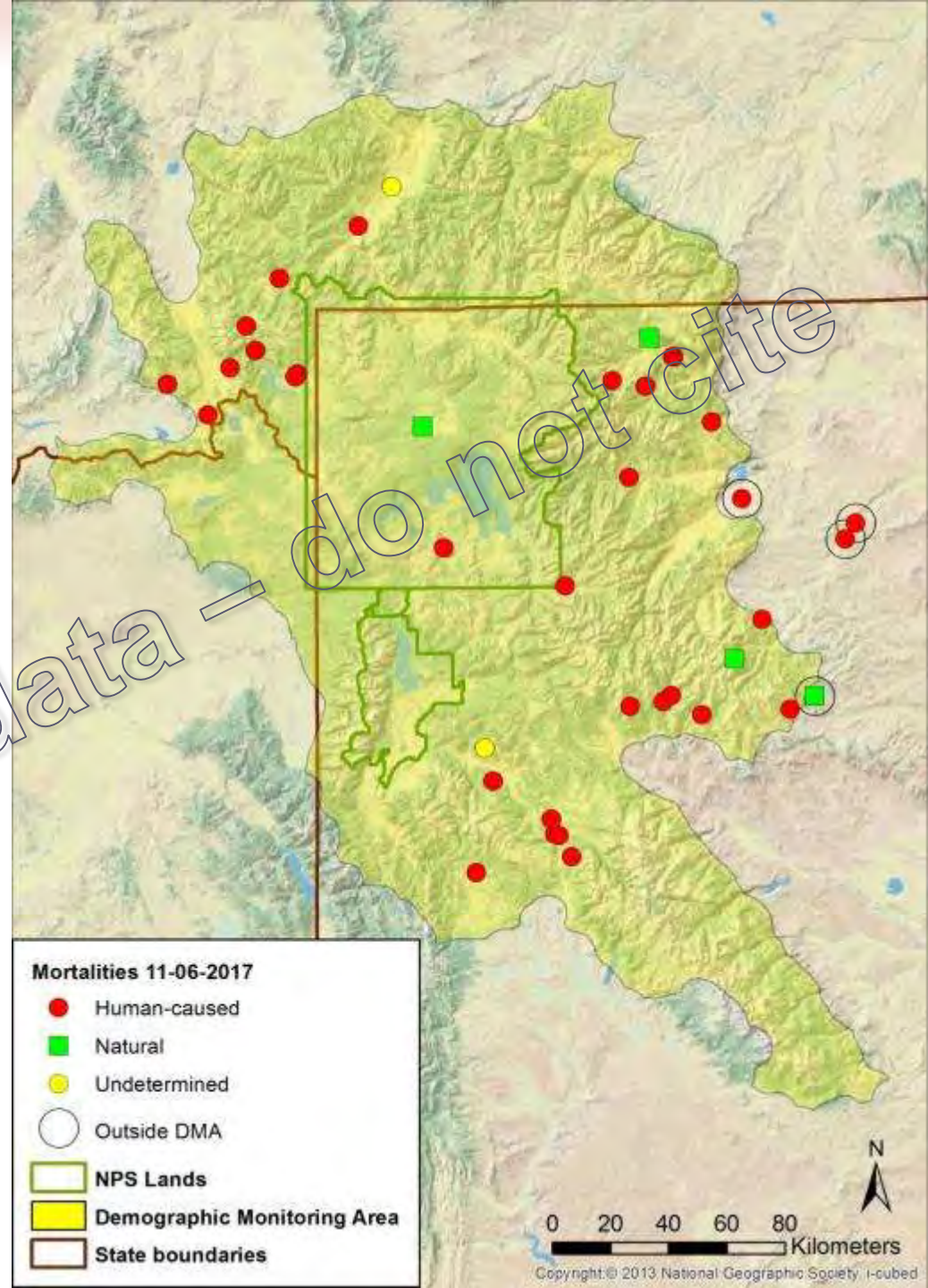
Known and probable mortalities 2017

- 46 in DMA
 - 39 human-caused
 - 3 natural
 - 4 undetermined cause
- 4 outside DMA
 - 3 human-caused
 - 1 natural

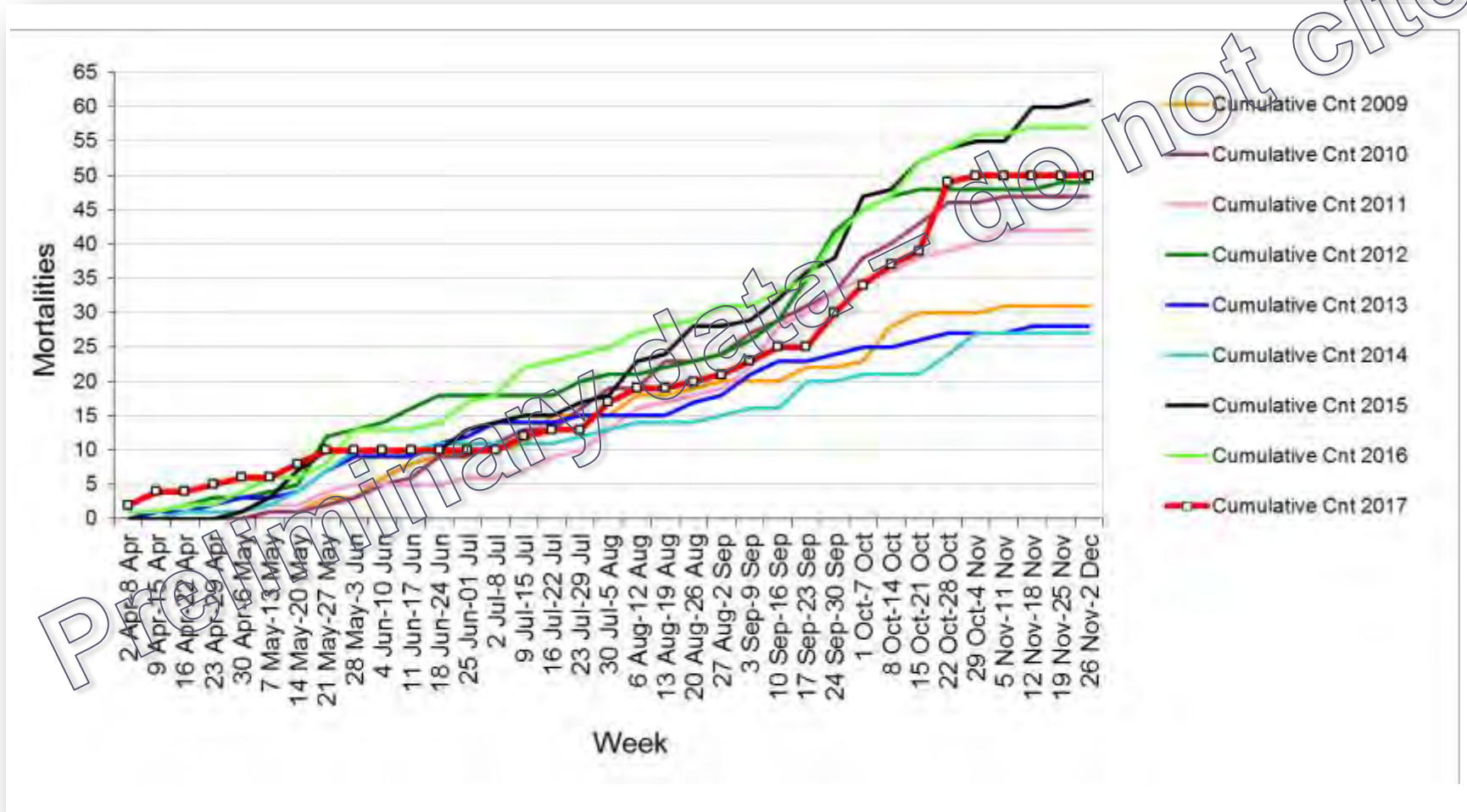


Known and probable mortalities 2017

- 46 in DMA
 - 39 human-caused
 - 3 natural
 - 4 undetermined cause
- 4 outside DMA
 - 3 human-caused
 - 1 natural
- **1 additional mortality**
(skull found) likely died prior to 2015, sex unknown



Cumulative counts of known and probable mortalities by week 2009-2017



Known and probable mortalities by area, sex, and age class 2017

Area	Sex	Age class		Total
		Dependent (<2 years old)	Independent (≥2 years old)	
Inside DMA	Female	0	11	11
	Male	3	20	23
	Unknown	12	0	12
	Total	15	31	46
Outside DMA	Female	0	2	2
	Male	0	2	2
	Unknown	0	0	0
	Total	0	4	4

Preliminary data - do not cite

Mortality thresholds (2016 Conservation Strategy, Table 2)

	Total Grizzly Bear Population Estimate*		
	≤674	675–747	>747
Total mortality rate for independent <u>FEMALES</u> .	<7.6%	9%	10%
Total mortality rate for independent <u>MALES</u> .	15%	20%	22%
Total mortality rate for dependent young.	<7.6%	9%	10%

Estimated percent mortality for population segments (DMA only)

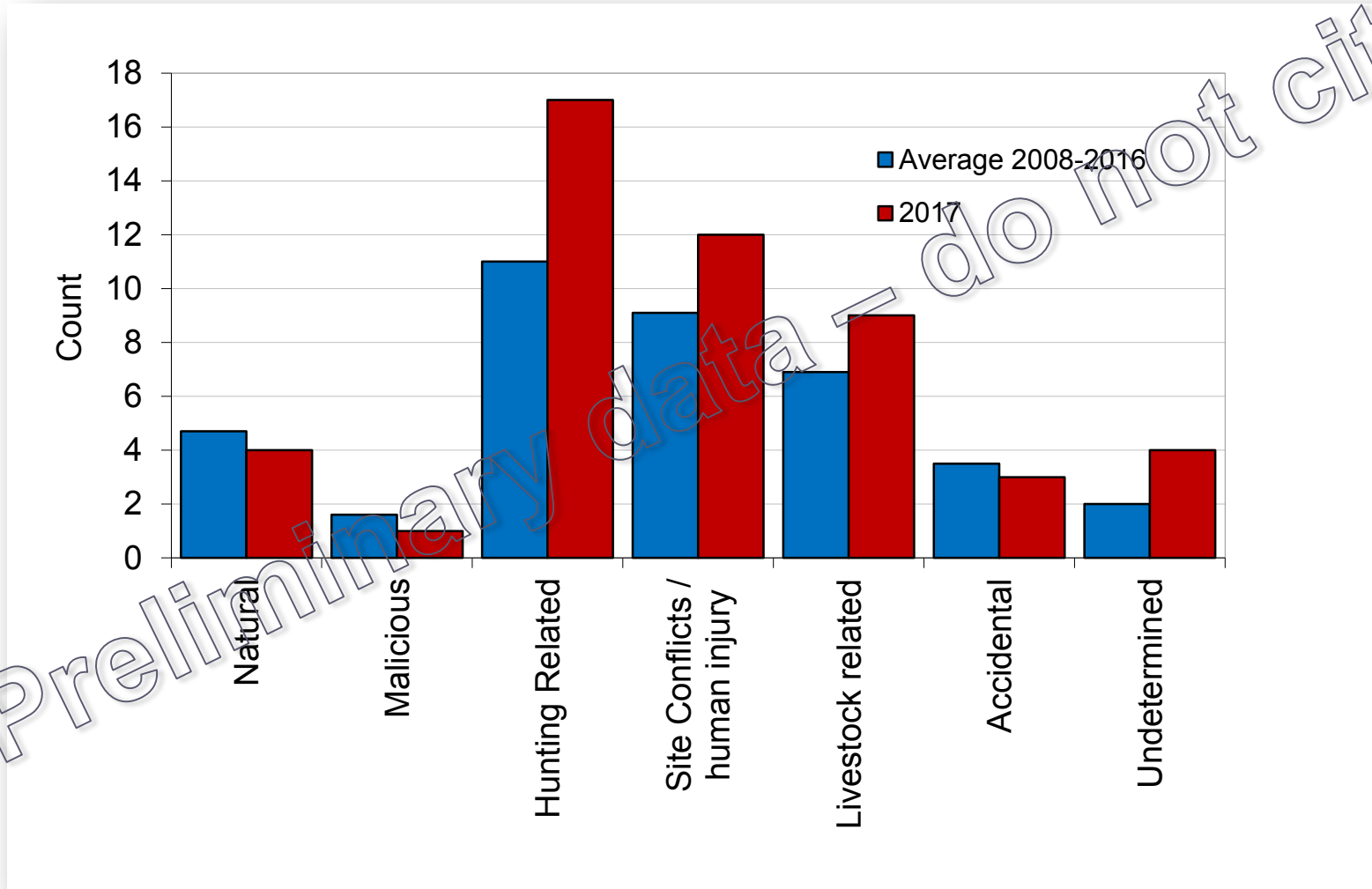
Population segment	Estimated N	Documented mortality	Estimated total mortality ^a	Estimate % mortality
Independent aged females (≥2yrs old)	250	11	20	8.0
Independent aged males (≥2yrs old)	250	20	33	13.2
Dependent young (<2yrs old)	217	12		5.5 ^b

^a Unknown/Unreported estimate is not applied to loss of dependent young

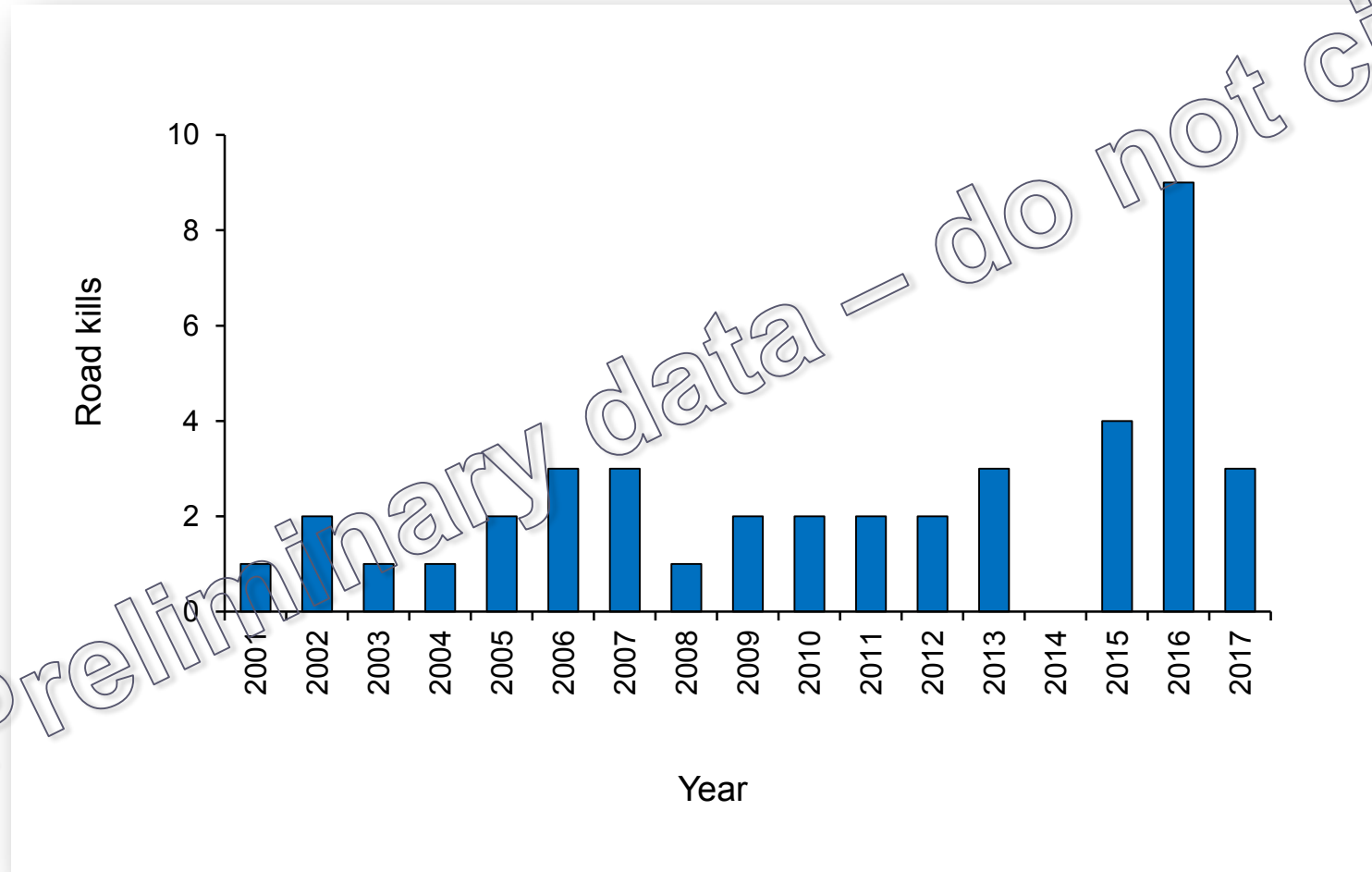
^b Estimated from documented human-caused mortalities only

Preliminary data — do not cite

Number of mortalities by cause for 2008-2016 (average) and 2017



Known and probable mortality from vehicle strikes 2001–2017

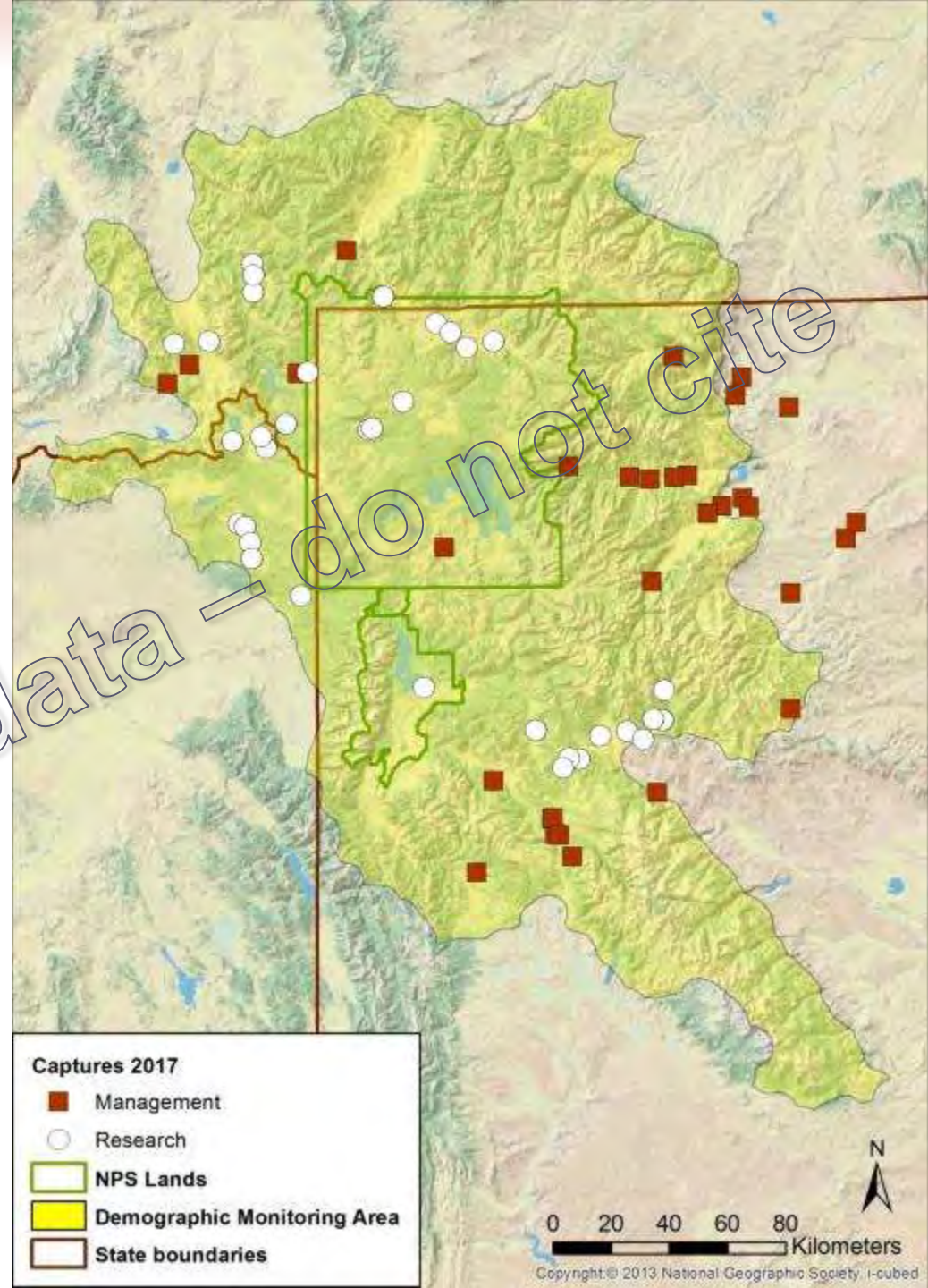


Captures and Known-Fate Monitoring



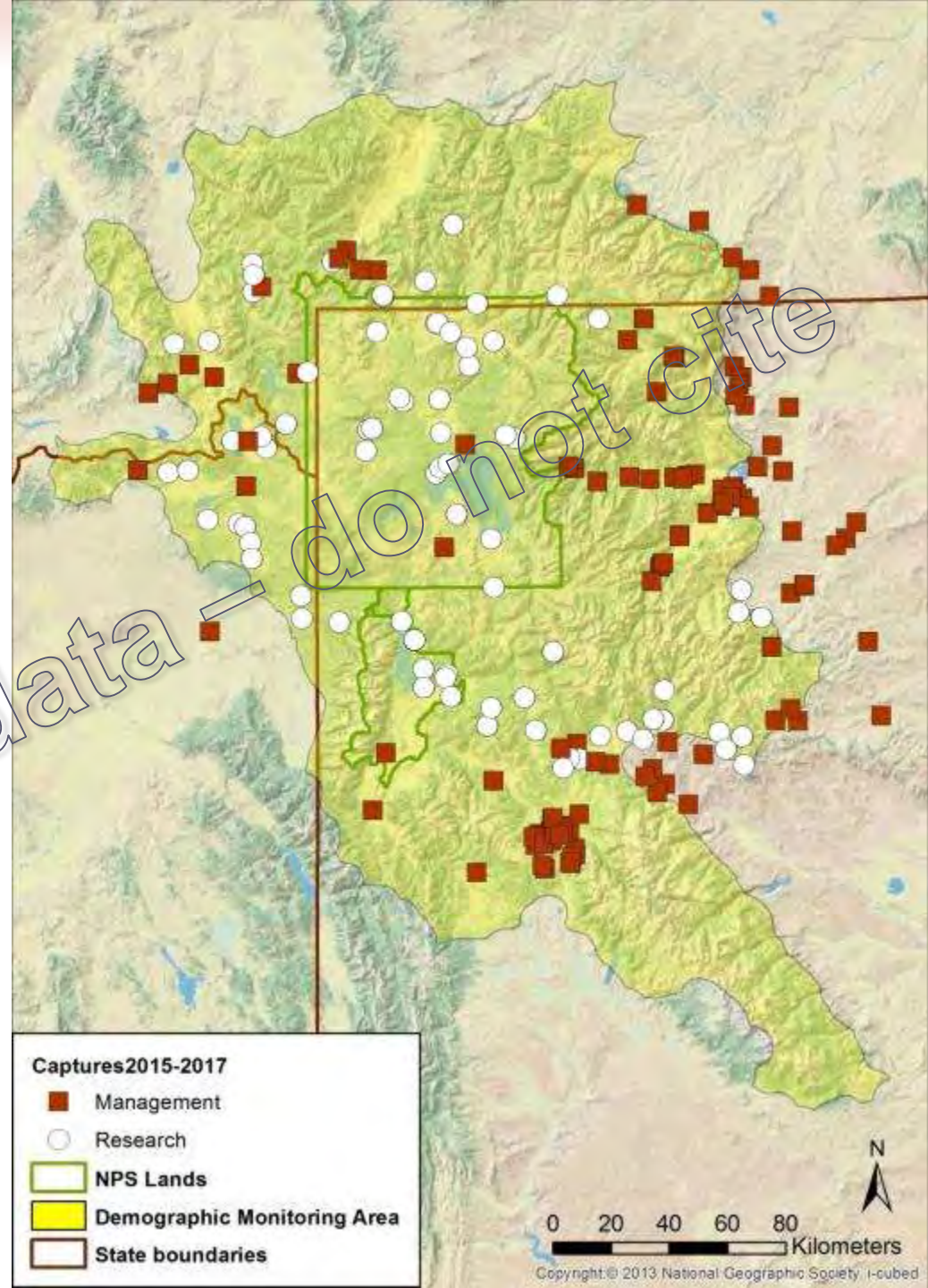
Grizzly bear captures 2017

- **Total captures = 98**
 - Research = 61
 - Management = 37
- **Individuals bears = 86**
 - Females = 26
 - Males = 54
 - Unknown = 6
- **New bears = 57**



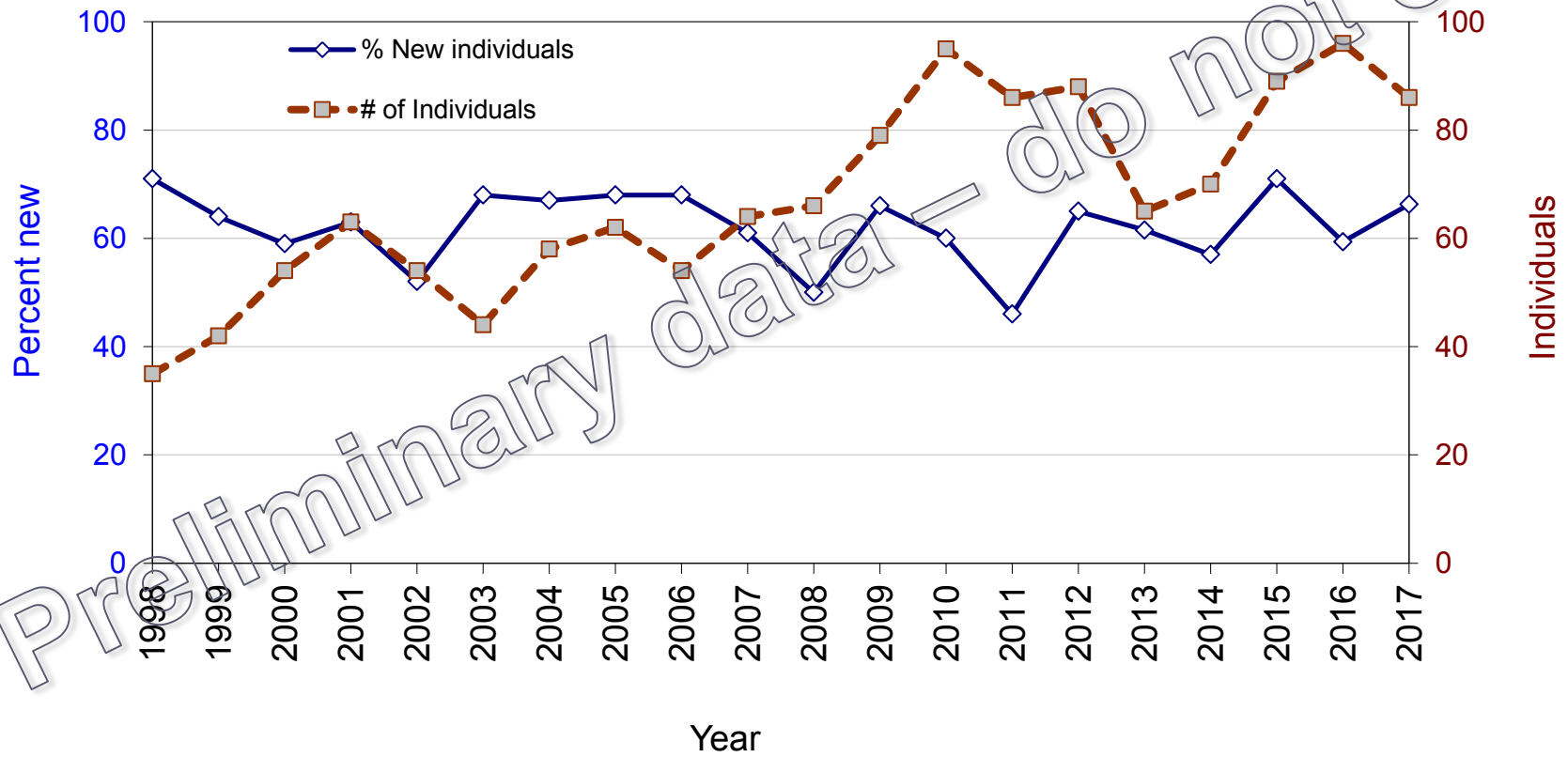
Grizzly bear captures 2015-2017

- **Total captures = 312**
 - Research = 154
 - Management = 158
- **Individuals bears = 235**
 - Females = 79
 - Males = 156



Preliminary data - do not cite

Number of individuals and percent new captures 1998–2017



Grizzly bears radio-monitored 2017

Total monitored = 112

Adult females = 38

Current = 59

Females = 37

Males = 22

Bears missing = 2



Telemetry 2015-2017

VHF

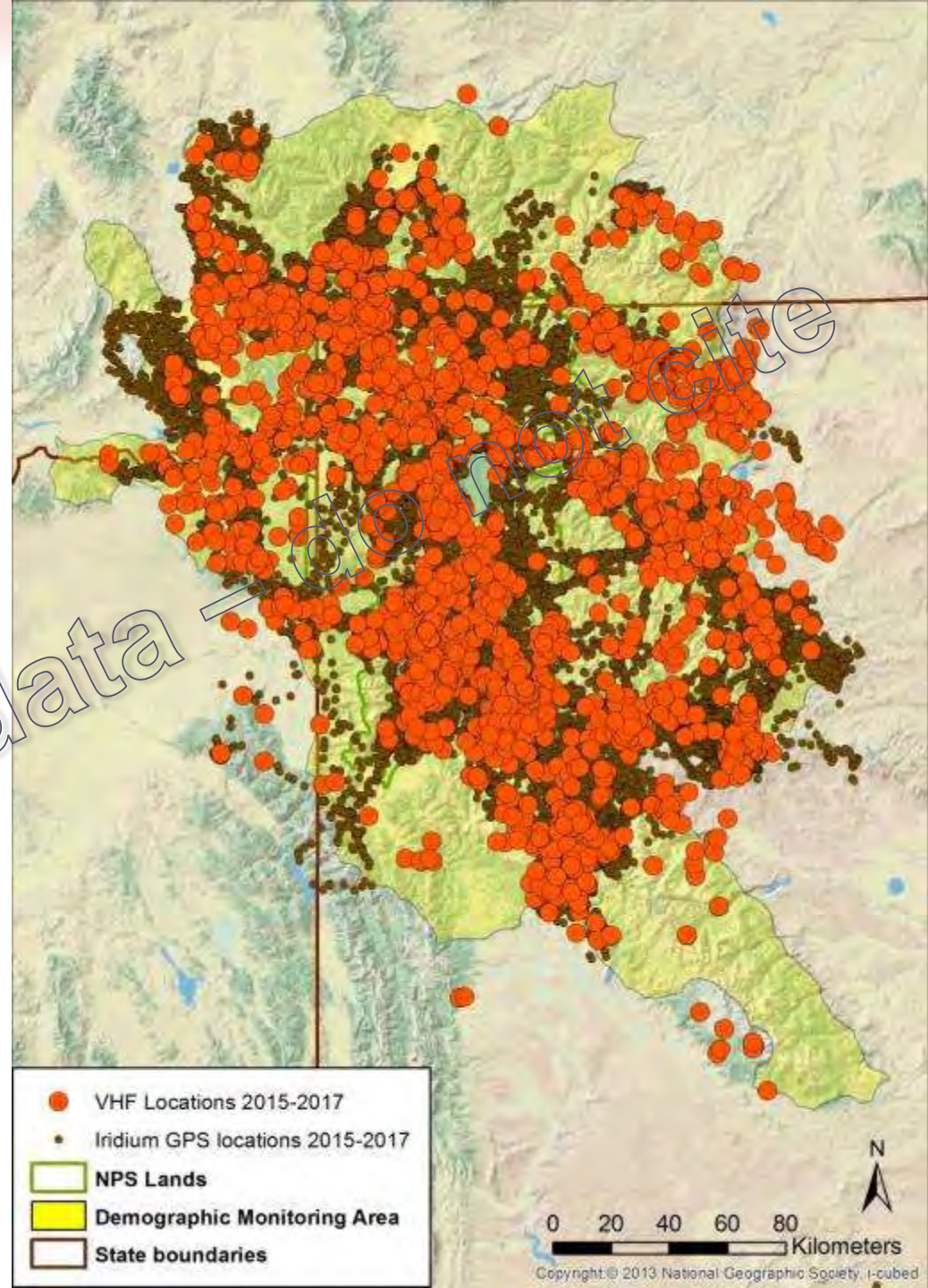
Individuals bears = 161

VHF locations \approx 2,600

GPS

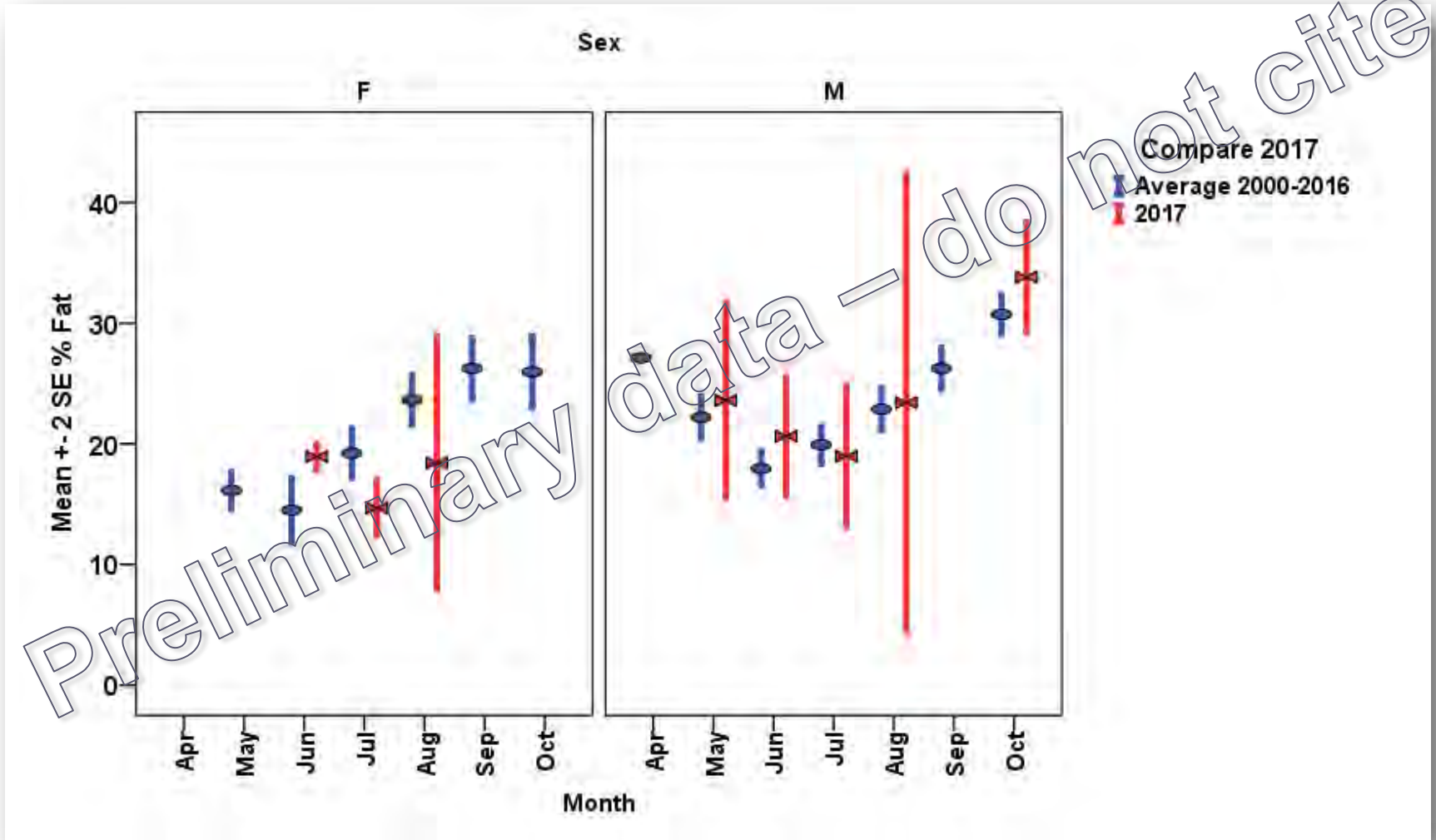
Individual bears = 60

Iridium GPS locations
more than 172,000



Body Condition and Genetic Monitoring

Average % body fat by month, 2000–2016 vs. 2017

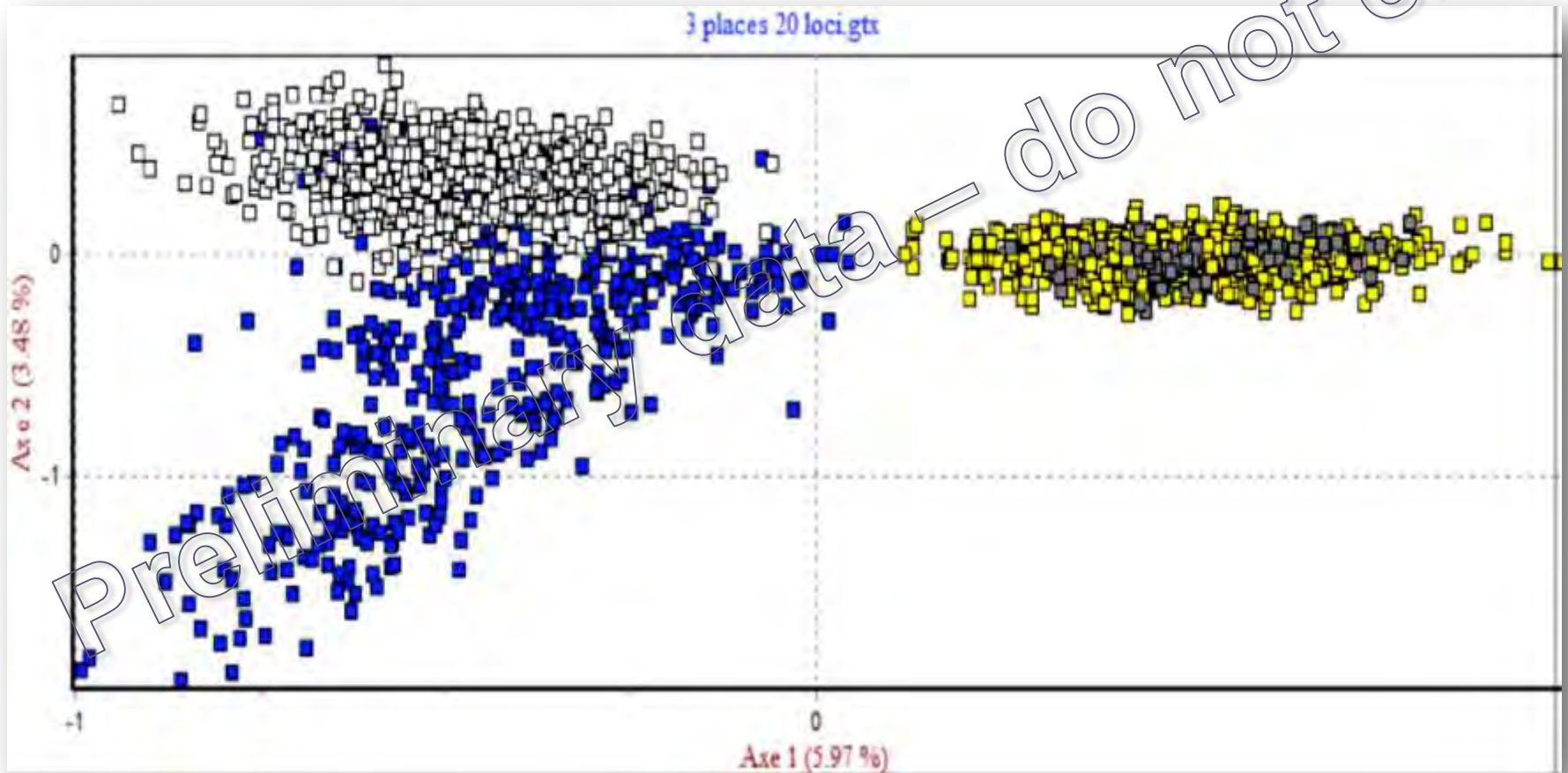


Genetic monitoring

- Results through 2016
- **1053** individuals genotyped (20 microsatellite markers)
- No evidence of non-GYE ancestry in any of the individuals genotyped to date

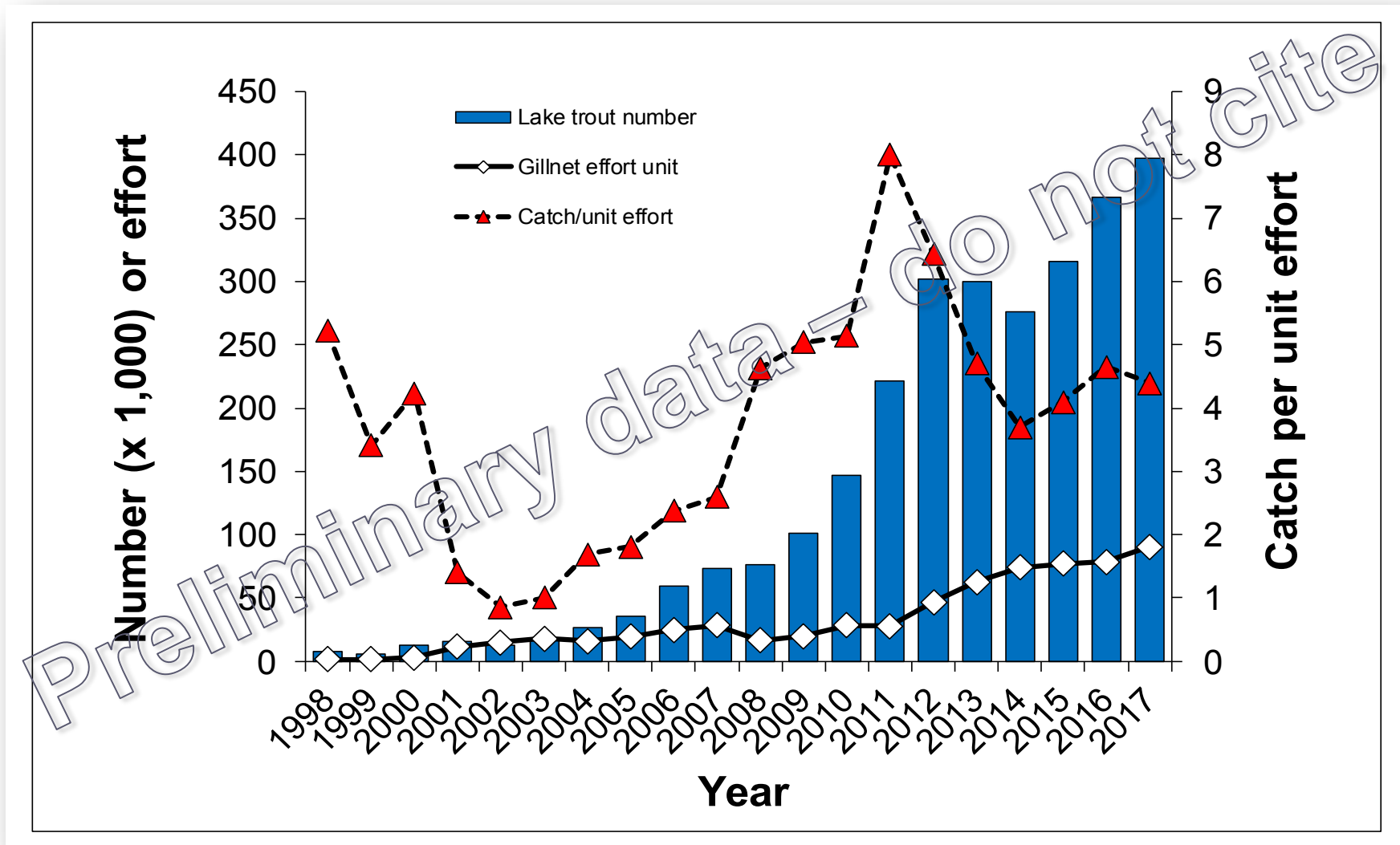


Genetic clustering based on 20 microsatellite markers

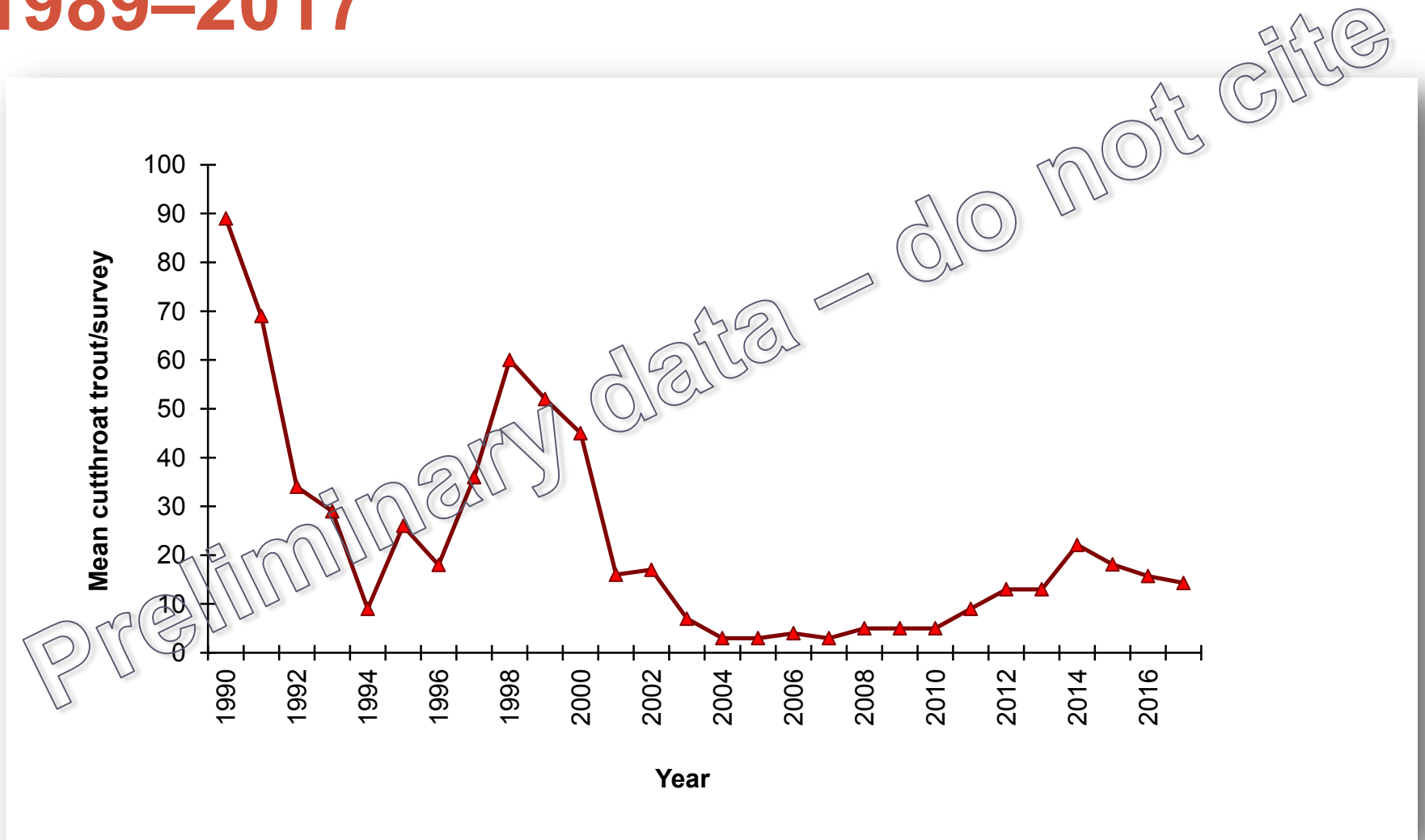


Food Monitoring

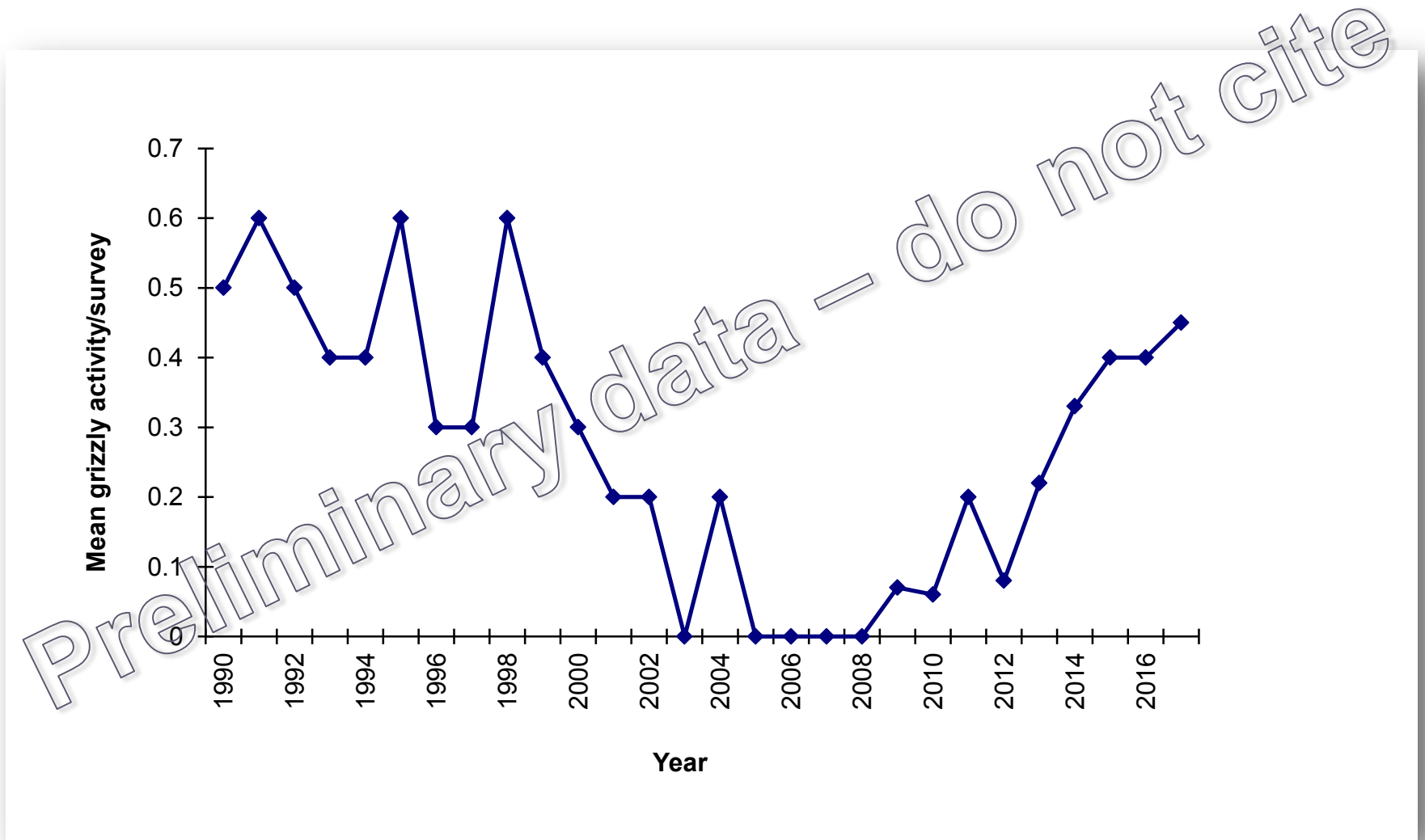
Lake trout removal on Yellowstone Lake, 1998–2017



Spawning cutthroat trout activity on front-country tributary streams 1989–2017

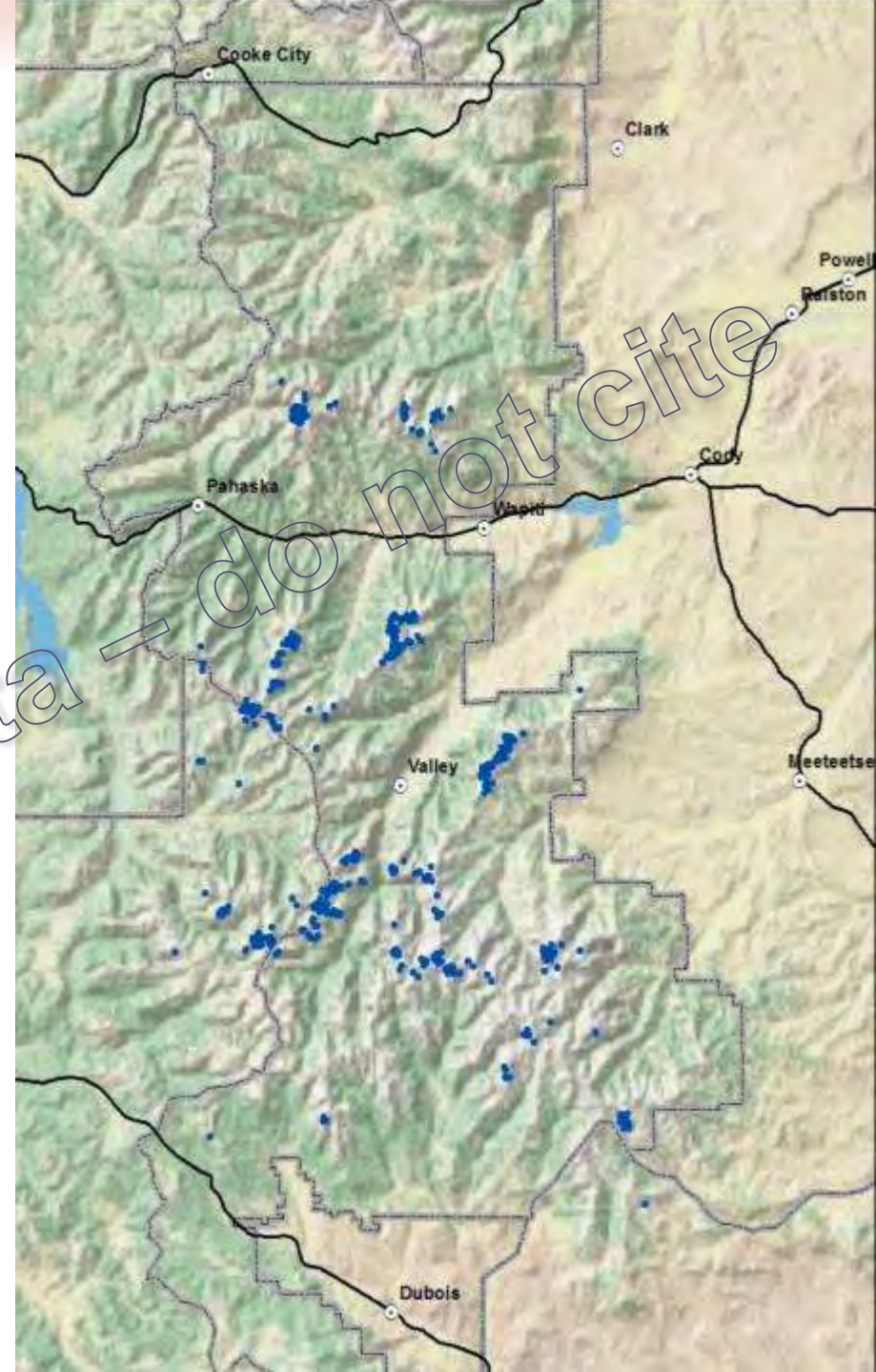


Grizzly bear activity on front-country tributary streams 1989–2017



Army cutworm moths

- **31 confirmed sites**
Multiple observations of bears feeding during more than 1 year
- **14 possible sites**
Single observation of bear(s) feeding



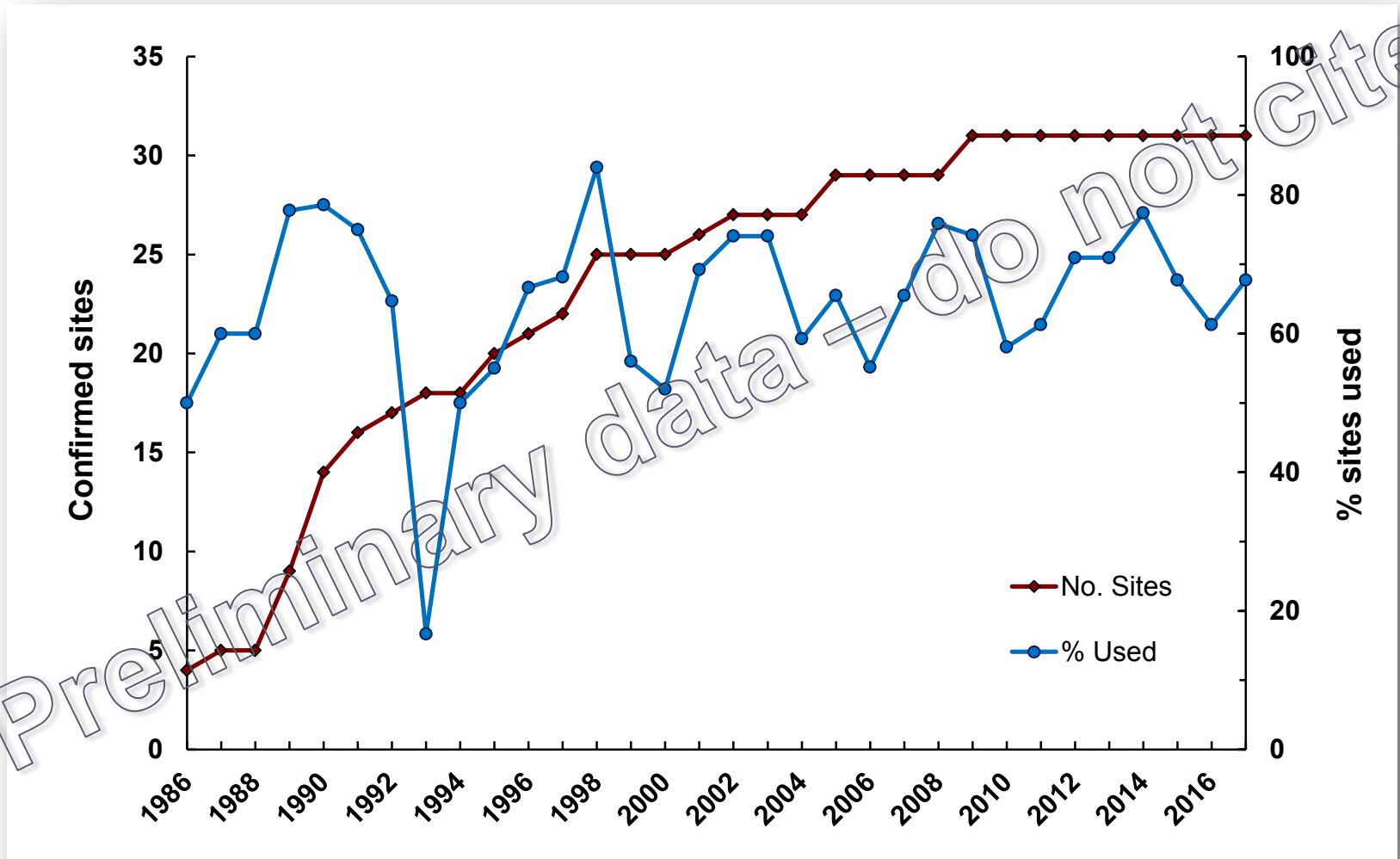
Army cutworm moths 2017

- 438 grizzly bears
- 21 of the 45 sites
- 12 of 58 initial observations of unique females with cubs (21%)

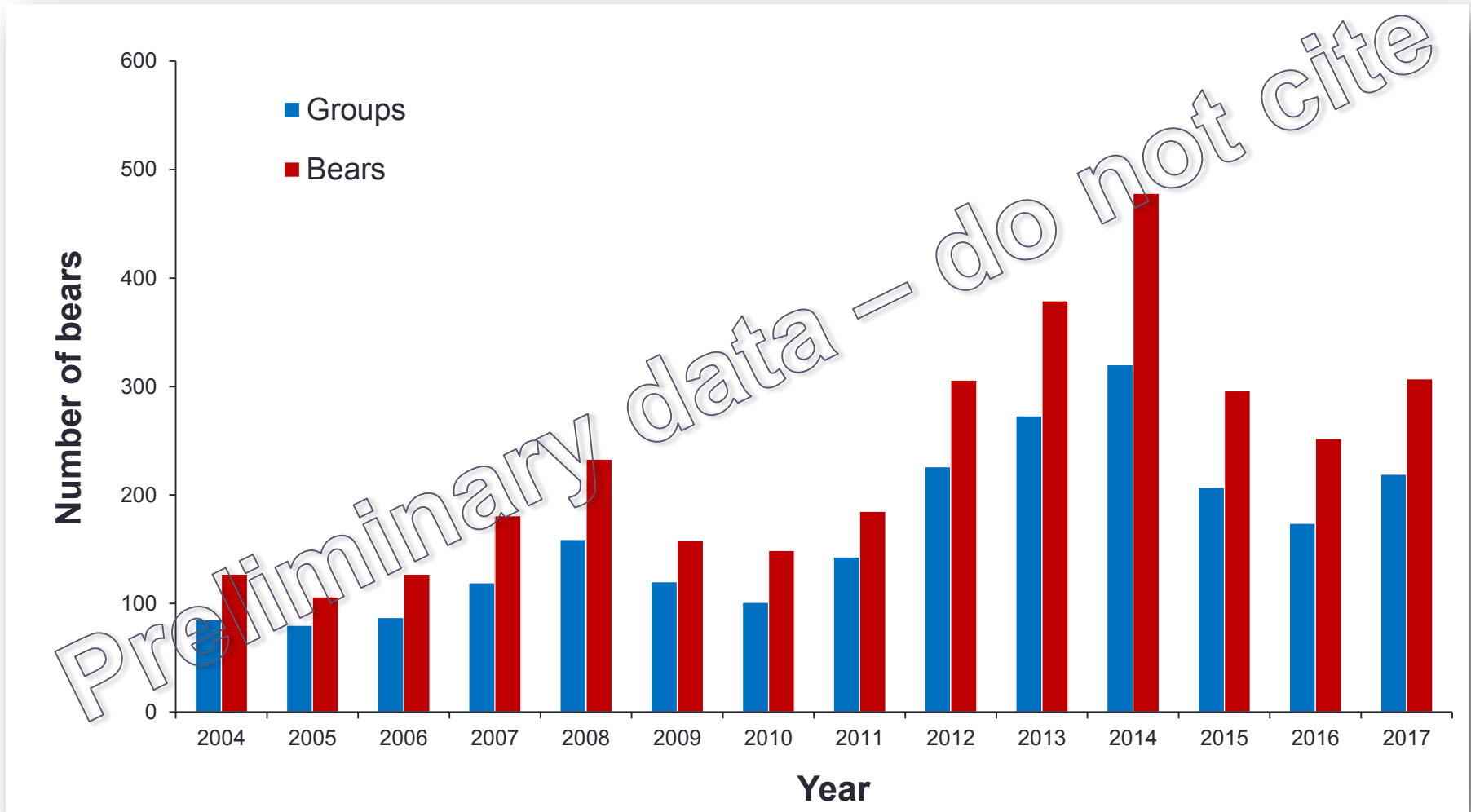


Photo: Josh Westerhold

Confirmed moth sites and percent used 1986–2017

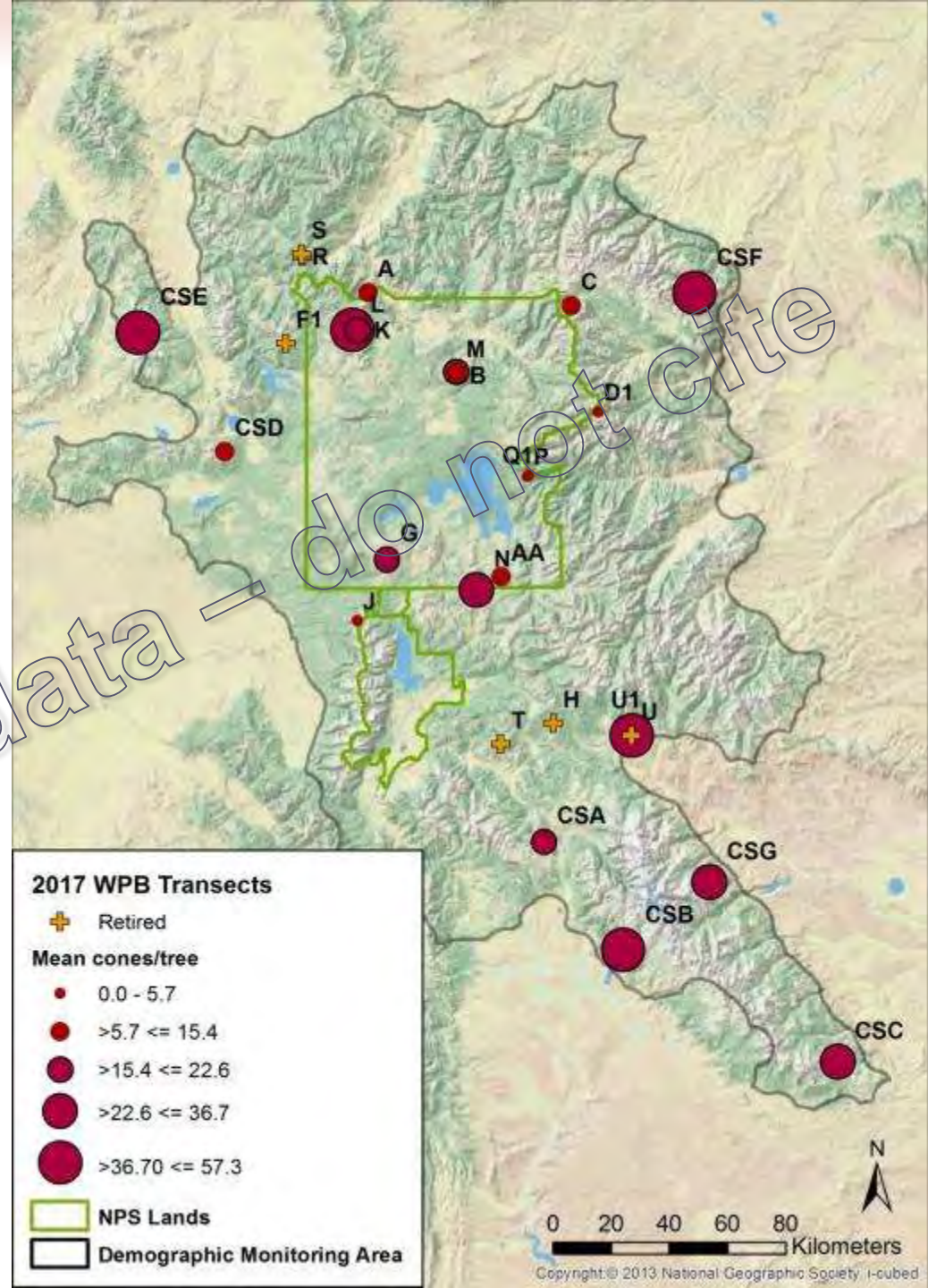


Grizzly bear sightings on moth sites observation flights 2004–2017



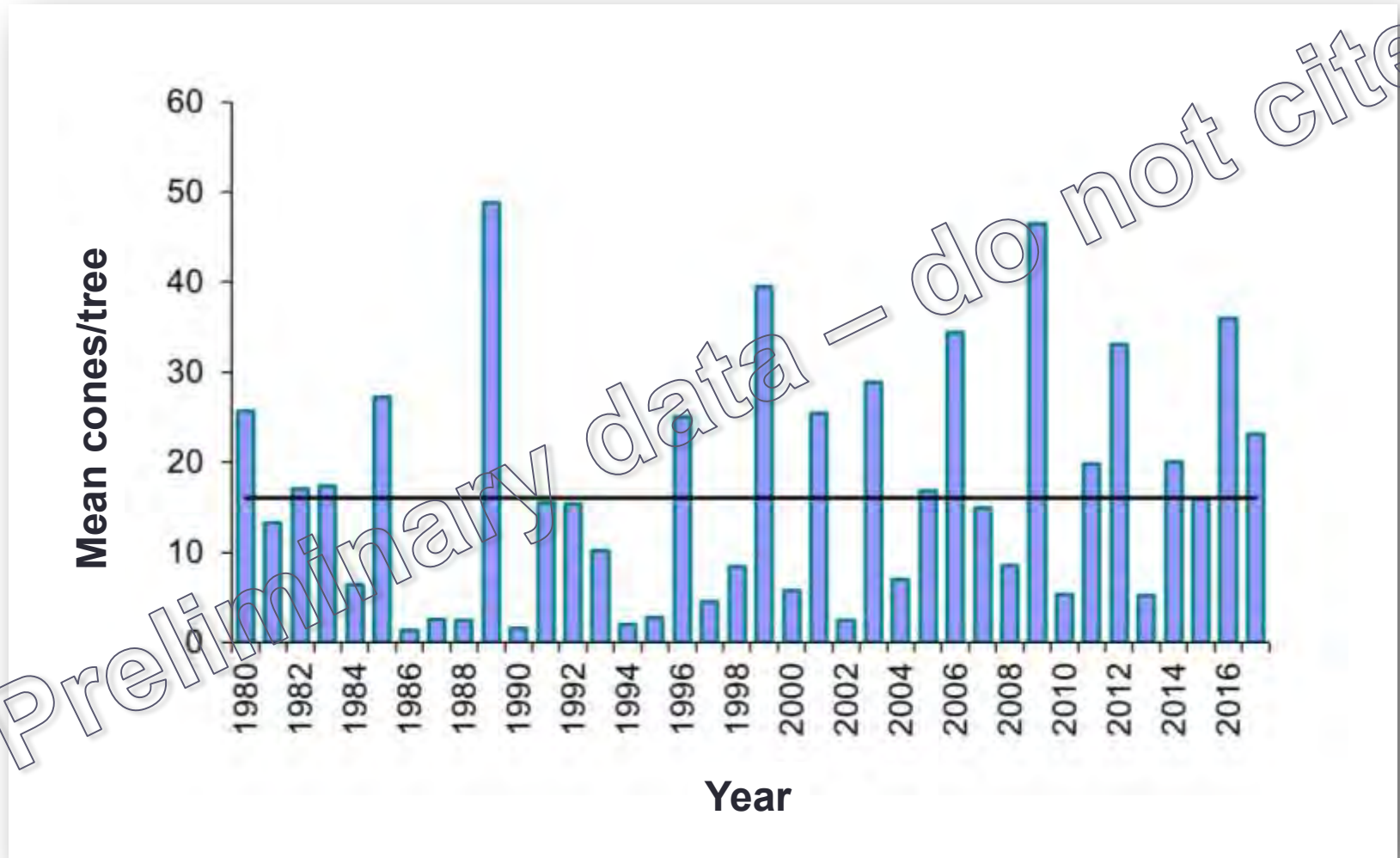
Whitebark pine transects 2017

- 21 transects
- 185 trees surveyed
- Average no. of cones/tree = 23.1

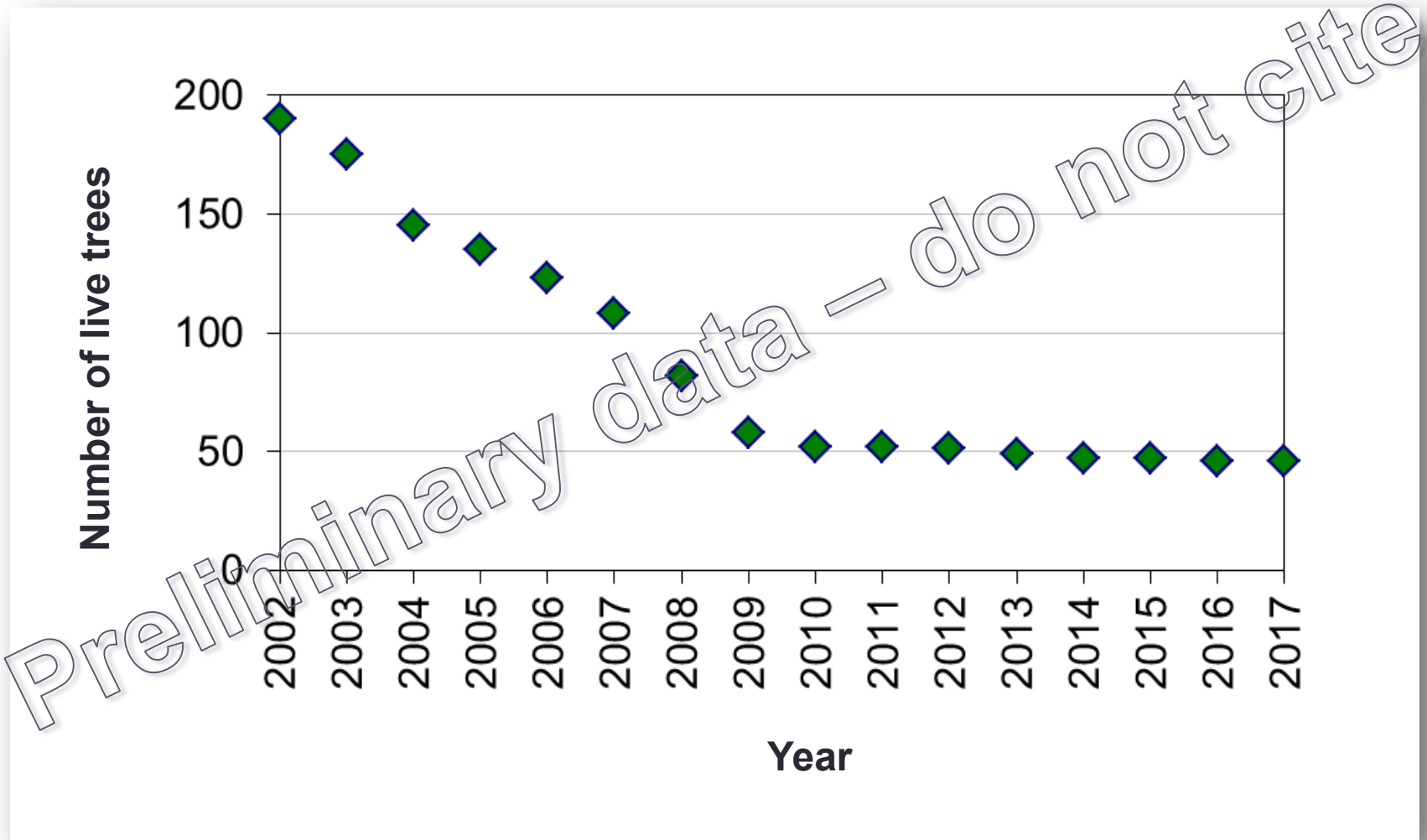


Preliminary data — do not cite

Whitebark pine cone production 1980–2017



Whitebark pine tree mortality on cone production transects 2002–2017



Summary

- **Population**

- High count for females with cubs ($n = 58$)
- Population estimate = 718
- Relatively constant since early 2000s
- No evidence of bears leaving core of ecosystem

- **Mortality**

- Only 8% of mortalities occurred outside the DMA
- Primary causes inside DMA: hunting related, livestock, and site conflicts
- 2017 mortality rates in DMA
 - Within thresholds for independent females (8%)
 - Within thresholds for independent males (13%)

- **Year of relatively good food supply**

- Good berry production
- Average whitebark pine cone production

Preliminary data - do not cite

A wide-angle photograph of a snowy mountain landscape. In the foreground, a path of footprints leads from the bottom left towards the center. The middle ground shows a line of dark evergreen trees. In the background, a range of jagged, snow-capped mountains stretches across the horizon. The sky is filled with dramatic, layered clouds, with a bright light source (the sun) breaking through near the top left corner, creating a soft glow and long shadows.

**Annual Reports, data, maps,
and other products available at
IGBST website**

Google “IGBST”

Acknowledgments 2017



- IDFG: C. Anderson, P. Atwood, J. Beer, C. Bleke, J. Brower, L. Cepenzski, D. Cureton, J. Farr, K. Garrett, K. Guy, C. Hendricks, R. Howe, C. Johnson, L. Lane, G. Losinski, A. McKarley, J. Nicholson, T. Nicholson, M. Pieron, R. Poole, M. Proett, J. Rydalch, J. White
- MSU: C. Peck
- MTFWP: S. Brozovich, C. Costello, J. Cunningham, K. Frey, C. Kerin, B. Lloyd, A. Nelson, J. Ramsey, J. Smith, D. Scott, J. Smolczynski, S. Stewart
- NPS: N. Adams, K. Atkins, B. Bennett, J. Bennett, D. Bergum, N. Bowersock, E. Boyd, S. Consolo-Murphy, R. Coscarelli, S. Dewey, C. Flaherty, G. Grieco, K. Gunther, D. Gustine, A. Hanna, K. Harrigan, D. Harris, S. Hegg, B. Helms, D. Houck, J. Jakicic, E. Johnston, P. Kirchner, M. Landry, C. Liesen, S. Mayberry, J. Mills, J. Mohr, E. Reinertson, M. Renteria, T. Ritter, A. Rodriguez, J. Roper, W. Scherer, D. Schneider, J. Schwabedissen, D. Stahler, P. Stalker, J. Stephenson, S. Stewart, K. Szcodronski, L. Templin, J. Warren, G. White, K. Wilmot, G. Wilson, M. Wrigley, T. Wyman
- Pilots and Observers: S. Ard, N. Cadwell, J. Ortman, M. Packila
- Shoshone and Arapaho Tribes: J. Friday, A. Lawson, B. Snyder
- USFS: S. Derusseau, A. Pils, D. Tyers
- USFWS: S. Becker, L. Connell, S. Conrad, H. Cooley, J. Fortin-Noreus, P. Hnilicka, M. Mazur, S. Stoinski
- USGS: C. Dickinson, M. Ebinger, M. Haroldson, B. Karabensh, M. Kurzen, F. van Manen, V. Villalobos, C. Whitman
- WS: C. Hoover, G. McDougal, M. Foster, K. Meidtke, R. Merrell
- WGFD: G. Anderson, C. Atkinson, K. Bales, B. Baker, D. Bjornlie, M. Boyce, J. Clapp, A. Courtemanch, Crane, B. Debolt, L. Ellsbury, Gerharter, P. Gerrity, M. Gocke, Z. Gregory, H. Haley, Hunter, R. Kindermann, J. Kraft, B. Kroger, K. Lash, D. Lasseter, D. Lemon, S. Lockwood, D. McWhirter, K. Mills, T. Mong, P. Quick, Richins, Ryder, Sculloch, J. Stephens, S. Stephens, S. Stewart, D. Thompson, Z. Turnbull, J. Winter, Wood