

YES: Accomplishments & Program of Work Report

Jim White

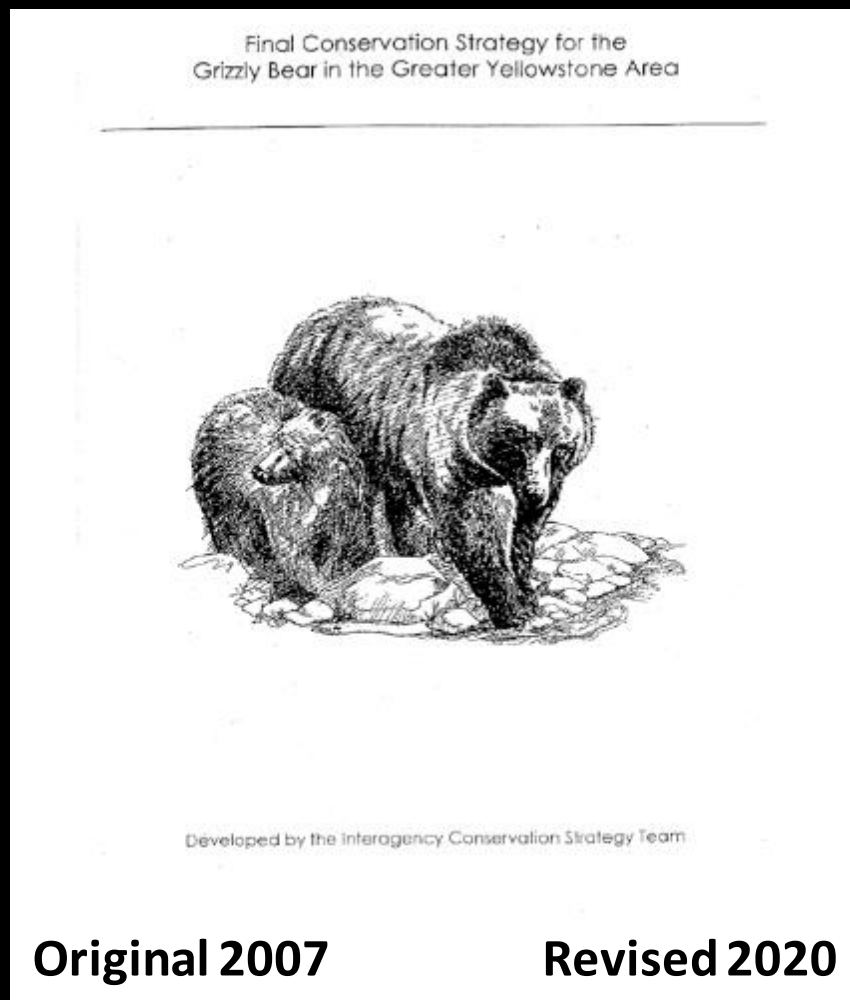


Report Outline

- Conservation Strategy Chapter 3 Revisions
- Mortality Reduction Recommendations
- IGBST Annual Report
 - Population Update
 - Demographic Monitoring Improvements



Conservation Strategy Revisions: Chapter 3 Habitat Standards



Original 2007

Revised 2020



What Does CS Chapter 3 Address?

3 Habitat Standards:

- Livestock allotments
- Secure area (road effects)
- Developed Sites



No changes post 1998 without mitigation

What are We Doing?

Revising CS Chapt. 3 Developed Sites:

Definition

- Infrastructure for agency administration and visitor use

Standards

- Direction for making changes

Application rules

- When and where do constraints apply?

Why Change?

More bears
more places



Increased
visitation



GYE

Developed

Sites



Conservation
Strategy review



Need to retain
habitat

Proposal Foundation

Replace:

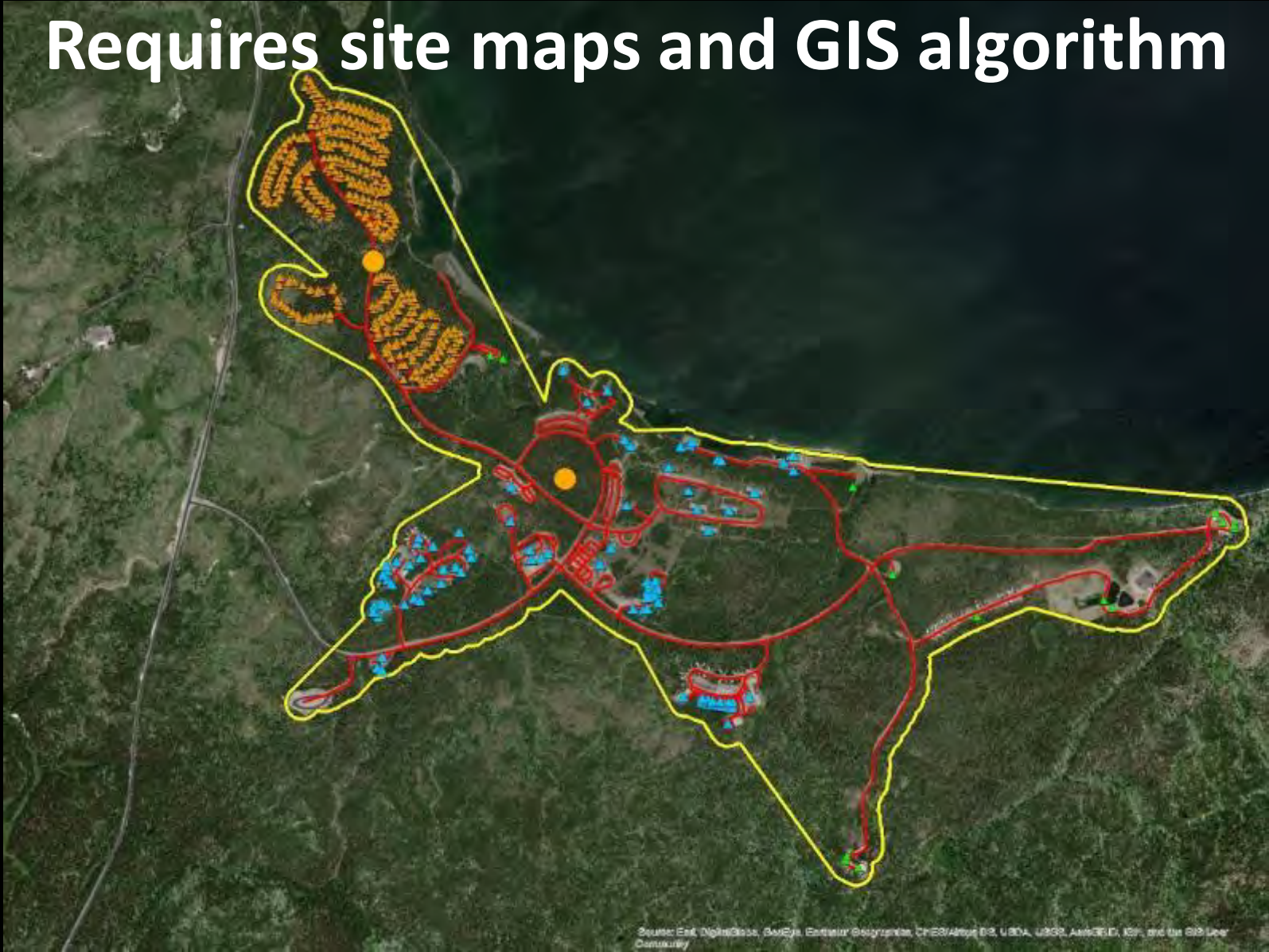
 "Points" + Mitigation

with

 "Footprints" + Administrative flexibility

Footprint Approach

Requires site maps and GIS algorithm



Advantage of Footprints

Replace “points” with “footprints”

- Defines a space for expansion
- Imposes measurable sideboards
- Provides management opportunity
- Accurate representation of human presence

Next Steps:

- **YES Review - ongoing**
- **Public Involvement**
- **YES Vote**

Mortality Reduction Recommendations

2019 Request from IGBC Chair



Prior Work

- **2009 YES Report**
 - **33 action items -> 11**
- **2019 Current YES Effort**
 - **11 action items -> 5**



Completed Steps

Tech Team Report 2019 – Prioritized 5 Topics

Lead	Topic
YES	Backcountry & Hunting
YES	Frontcountry & Community Planning
YES	Livestock Conflicts & Producer Outreach
IGBC	Community Outreach in Range Expansion Areas
IGBC	Efficacy of Information & Education

- October 2019 YES Public Workshop, Cody WY
- July 2020 Tech Team Report (Revised)
- October 2020 YES Workshop, Virtual

Next Steps

Action Items For YES:

- Refine mortality reduction action items (Spring)
- Report projects to IGBC (Summer)



IGBST Annual Report: GYE Population Update

Population

- High females with cubs in Demographic Monitoring Area ($n = 58$)
- **Population estimate = 727**
- **No major changes from previous years within DMA**

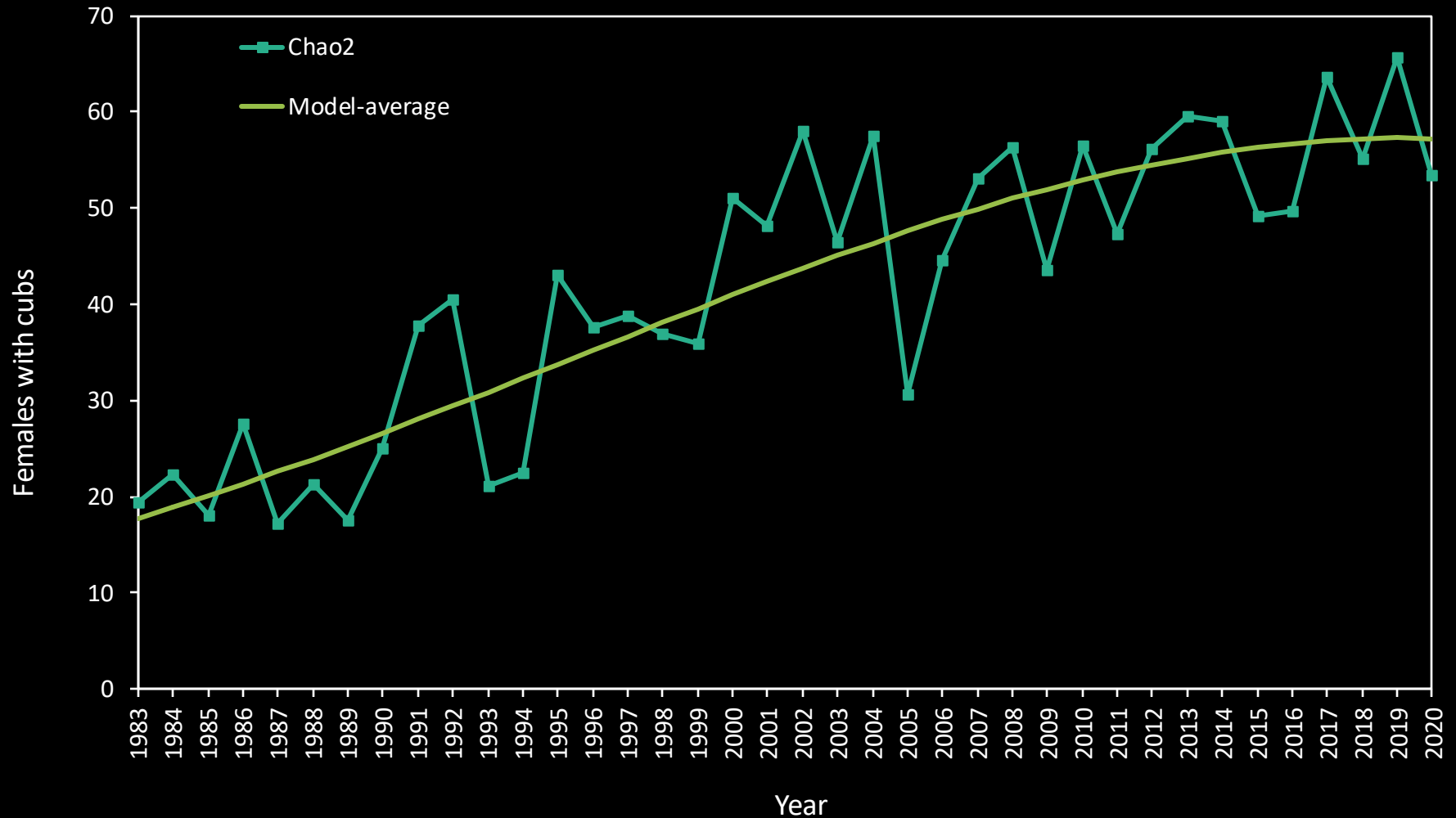
Mortality

- Primary causes inside DMA: site conflict, self-defense, and livestock
- 2020 mortality rates in DMA
 - Below threshold for independent females (7.5%)
 - Below threshold for independent males (8.7.%)
- **39% of 2020 mortalities occurred outside the DMA**

Food supply

- Overall good food supply; good berry production
- Average whitebark pine cone production, better in the north
- High moth site use, bear activity into early October

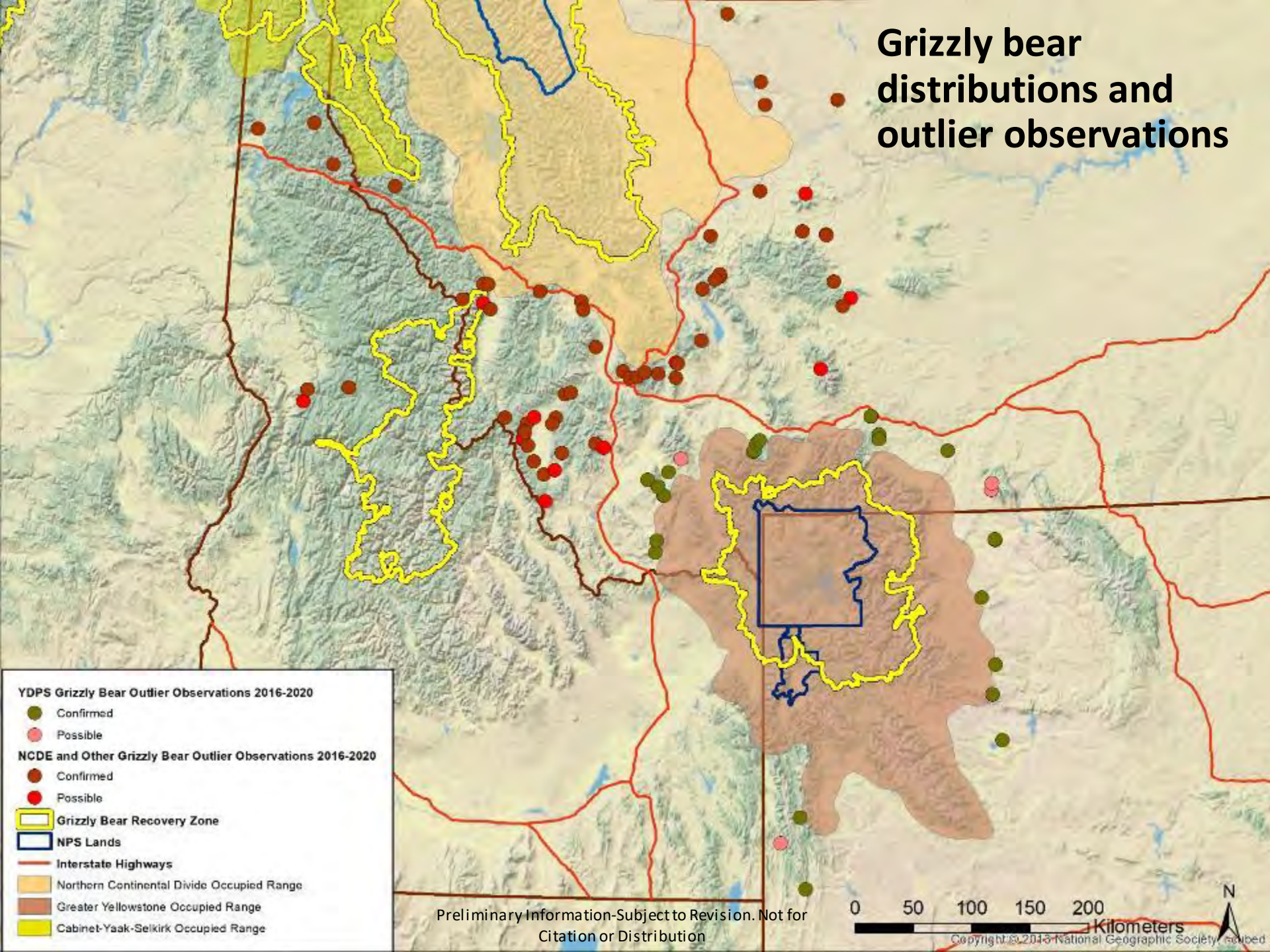
Trend in annual estimates of females with cubs 1983-2020 (DMA)



Advancing Demographic Monitoring

- Chao2 re-assessment (report being finalized)
- Ongoing investigations of additional monitoring techniques (Integrated Population Models, vital rate analyses)
- Develop recommendations for updating IGBST monitoring protocol

Grizzly bear distributions and outlier observations



YDPS Grizzly Bear Outlier Observations 2016-2020

- Confirmed
- Possible

NCDE and Other Grizzly Bear Outlier Observations 2016-2020

- Confirmed
- Possible

- Grizzly Bear Recovery Zone
- NPS Lands
- Interstate Highways
- Northern Continental Divide Occupied Range
- Greater Yellowstone Occupied Range
- Cabinet-Yaak-Selkirk Occupied Range

Preliminary Information-Subject to Revision. Not for Citation or Distribution

Questions?

