

# Grizzly Bear Conflicts in the Idaho Portion of the GYE



Jeremy Nicholson  
Wildlife Biologist  
Idaho Fish and Game



**Legend**

- DMA
- Distribution 2000 to 2014
- Yellowstone National Park
- John D. Rockefeller Jr. Memorial Parkway
- Grand Teton National Park
- State Boundaries

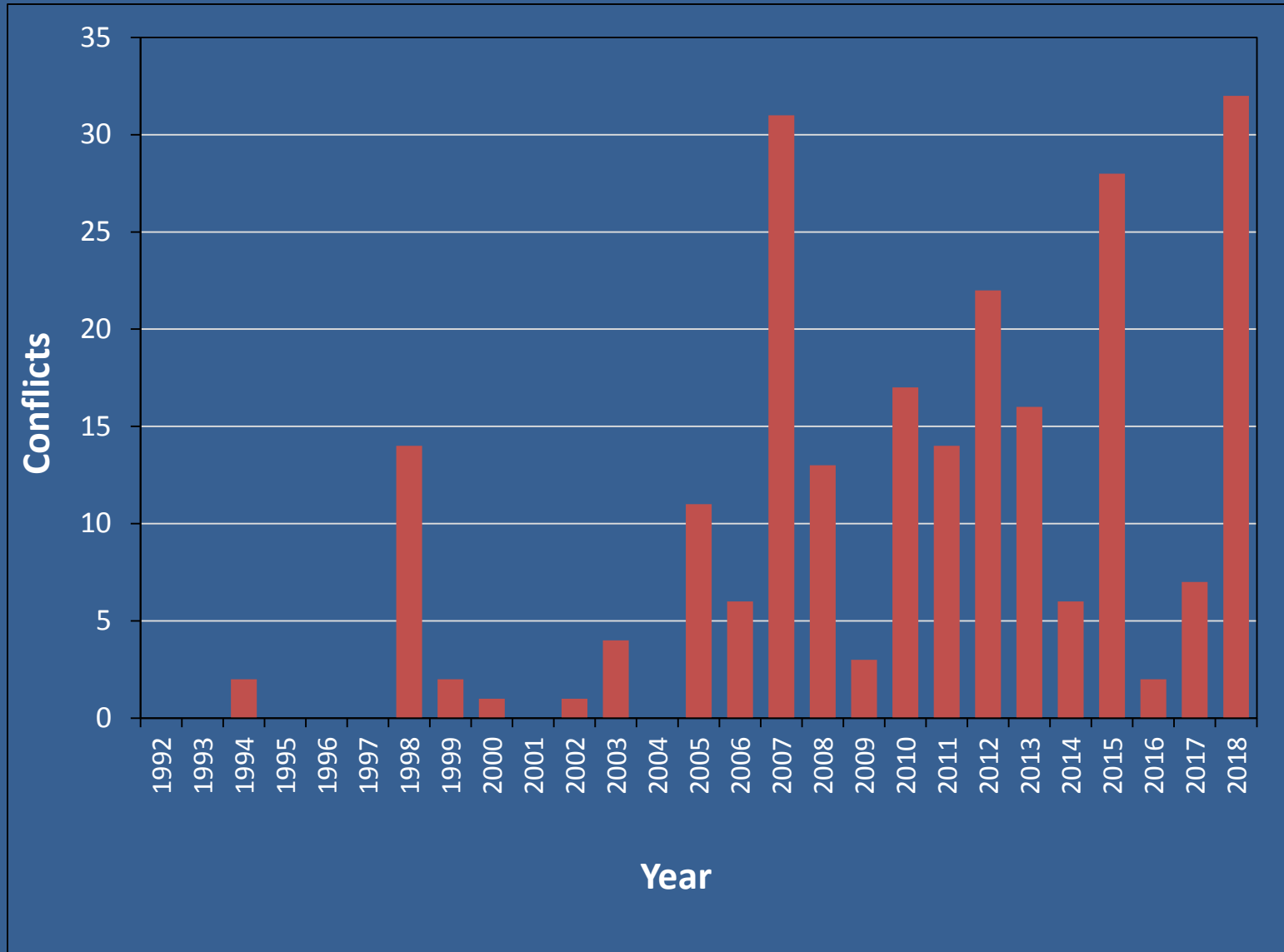


## Teton Valley

# What is a Conflict?

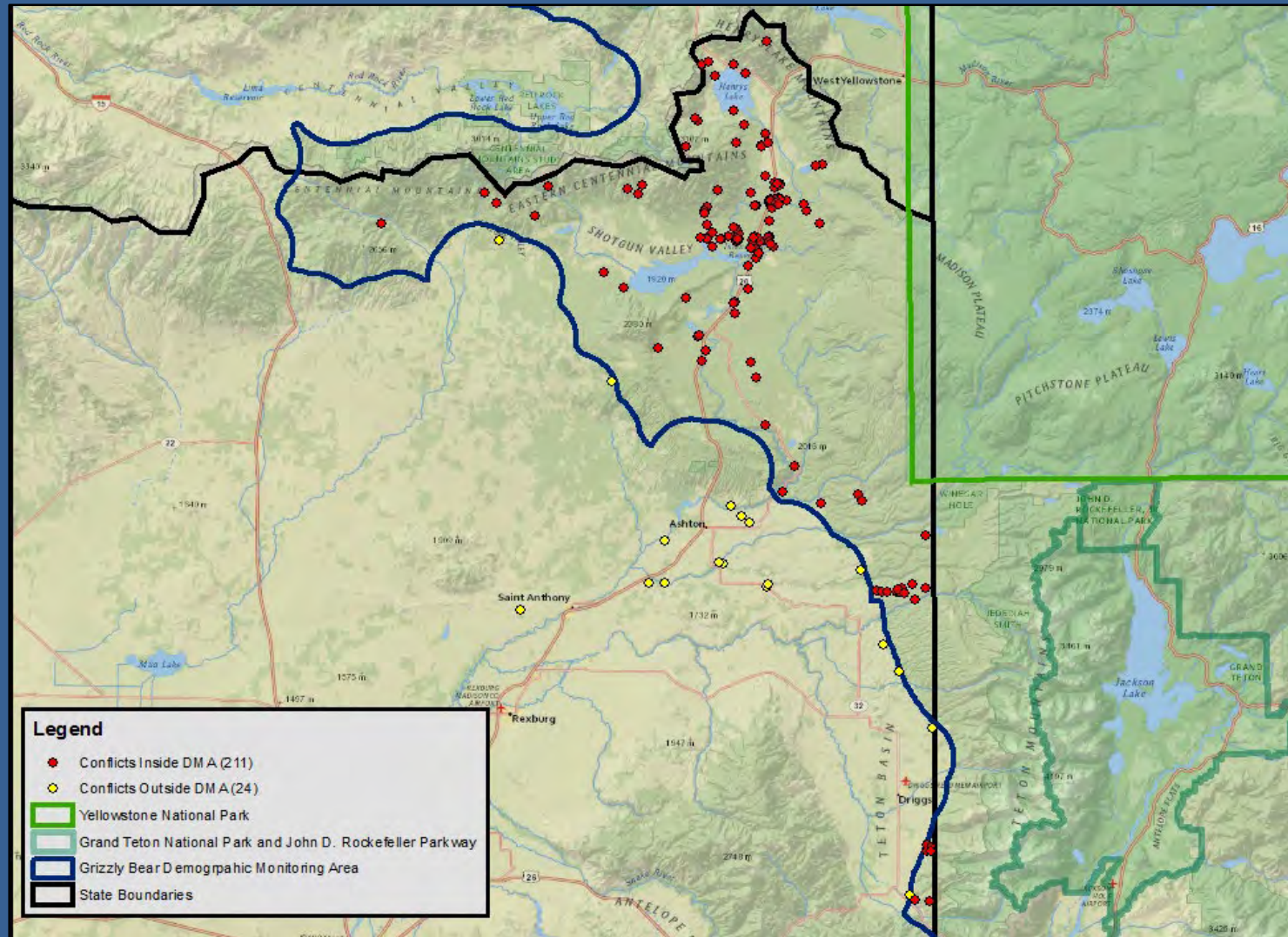
- Conflicts are incidents where bears injure people, cause public safety concerns, damage property, obtain anthropogenic foods, kill or injure livestock and require an agency response.

# Conflicts From 1992-2018





# Number of documented human-grizzly bear conflicts inside and outside the DMA in the Idaho portion of the Greater Yellowstone Ecosystem, 1992–2018.



# 2018 Conflicts

Human-grizzly bear conflicts in the Idaho portion of the Greater Yellowstone Ecosystem, 2018.	
Conflict type	Number of Conflicts
Encounter Situations	6 (5 charging incidents)
Public Safety Threat (habituated, near developed site, etc.)	17
Anthropogenic Foods	8
Property Damage – without food reward	0
Property Damage – with food reward	0
Livestock – cattle	1
Livestock – poultry	0
Livestock – sheep	0
Beehives/orchards	0
Total	32

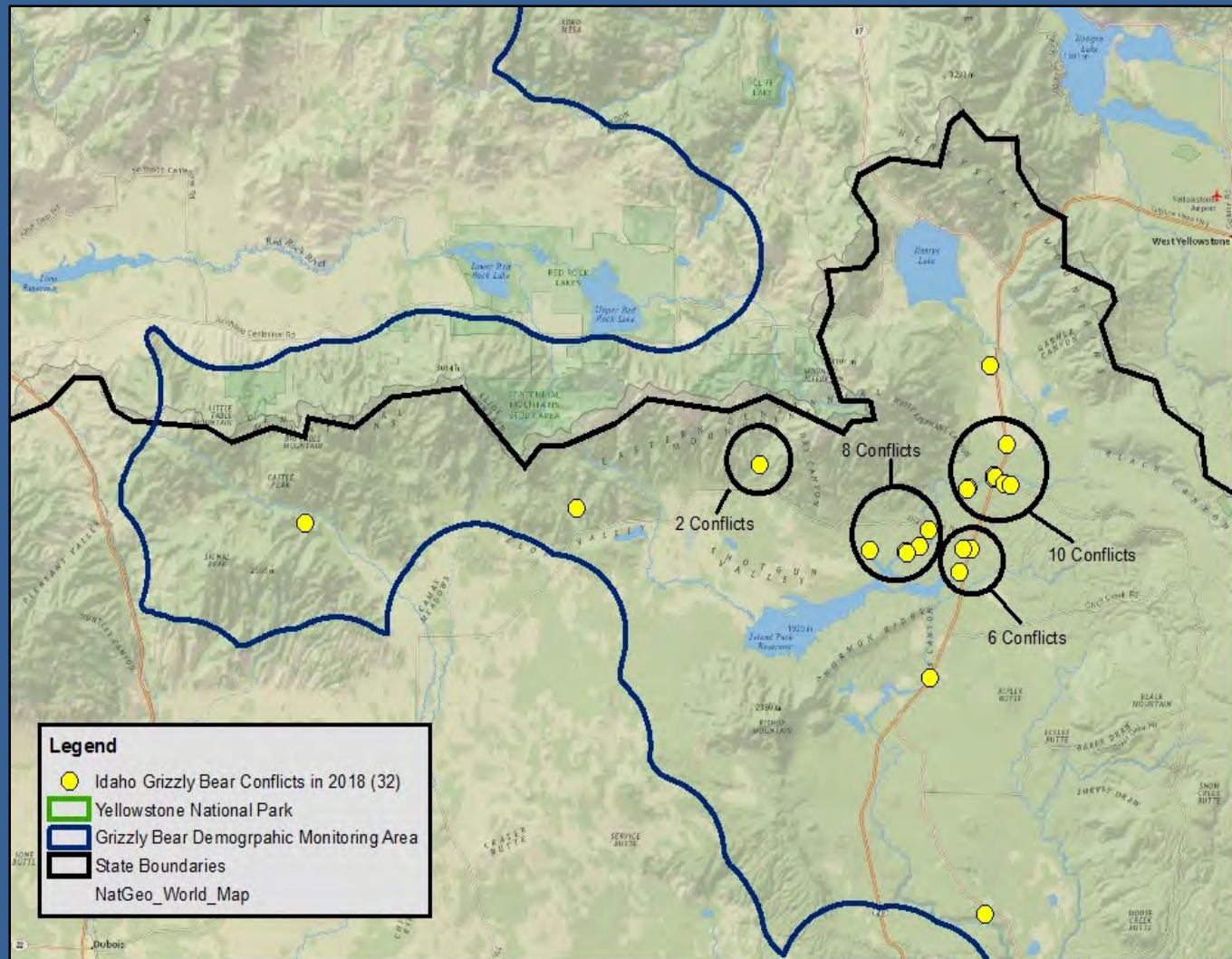
\* Three bears were responsible for 25 of the conflicts that occurred.

# Six Encounter Incidents

- 5 charges
  - hiker charged on trail (deployed bear spray)
  - three hunters charged (1 during spring bear hunt, 2 incidents in fall archery hunt)
  - camper reported being charged by an injured bear in campground
- 1 encounter at campsite (bear approached camper at fire ring, deployed bear spray)

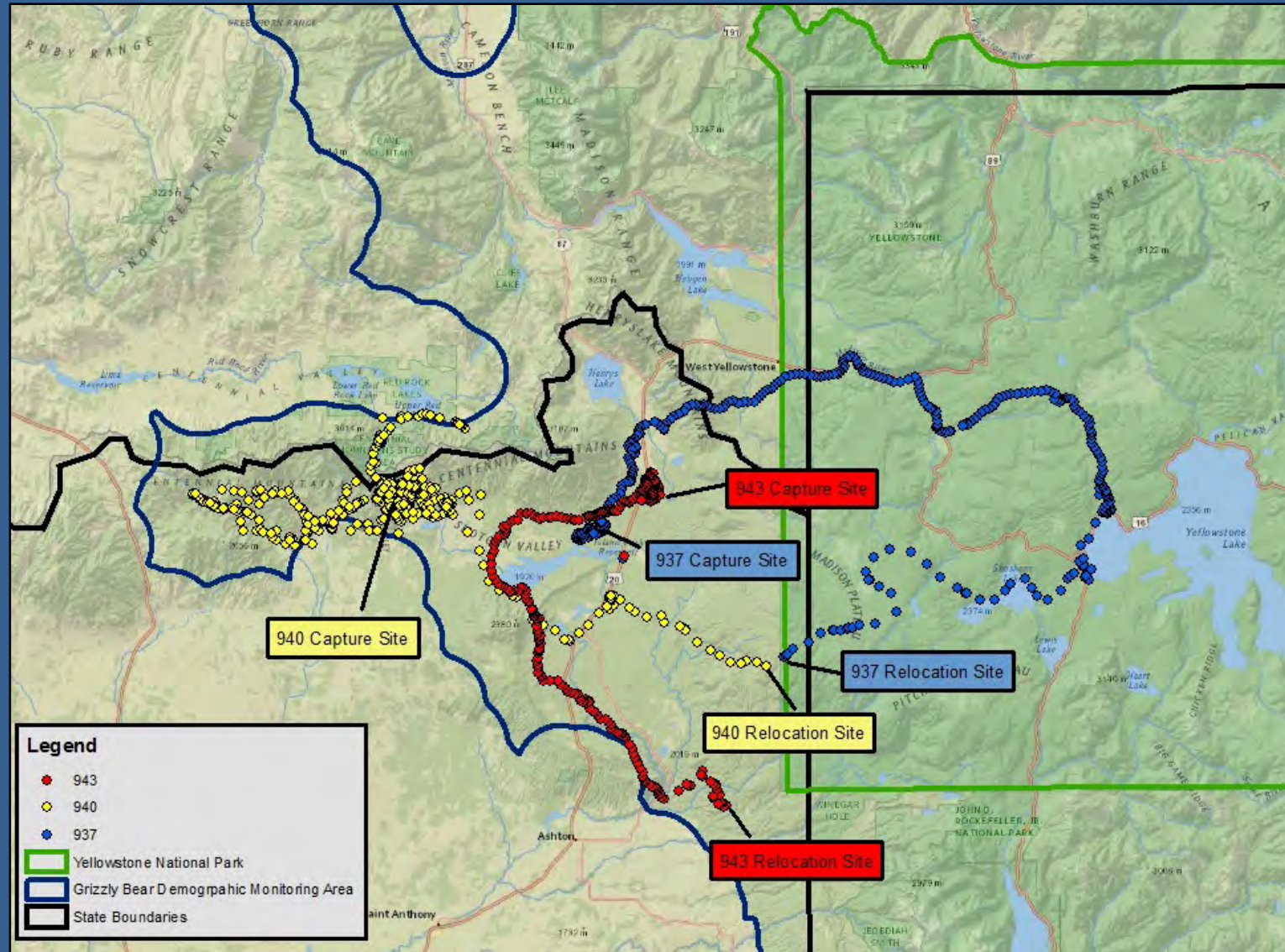


# Locations of human-grizzly bear conflicts in the Idaho portion of the Greater Yellowstone Ecosystem, 2018.





# Three Bears Captured and Relocated



# Known Mortalities

- GB 937 and 943





# Reducing Conflicts





# Outreach and Education





# Outreach and Education





# Outreach and Education

- We employ a seasonal bear education technician that works during our peak conflict periods
- Idaho Master Naturalists program



# Outreach and Education

- Conduct site visits to identify potential conflict situations
- Canvass neighborhoods and campgrounds





# Securing Attractants





# Carcass Management



# Focuses for 2019

- Work with local government
- Meet with HOAs
- Continue to work with local businesses

# Focuses for 2019

- Increase monitoring and education efforts in dispersed campgrounds
- Wild About Bears Workshop
- Train – IDFG personnel will be attending two different Wildlife Human Attack Response Training (WHART) workshops and
- Electric fencing workshop

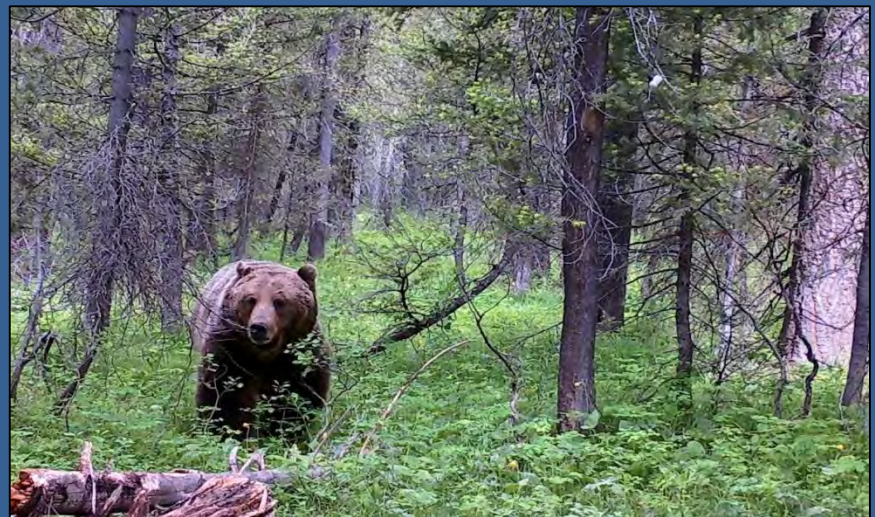


# Focuses for 2019

- Research Trapping



- Camera surveys





# Questions

