



# 2018 NCDE Grizzly Bear Capture and Mortality Summary

12/11/18

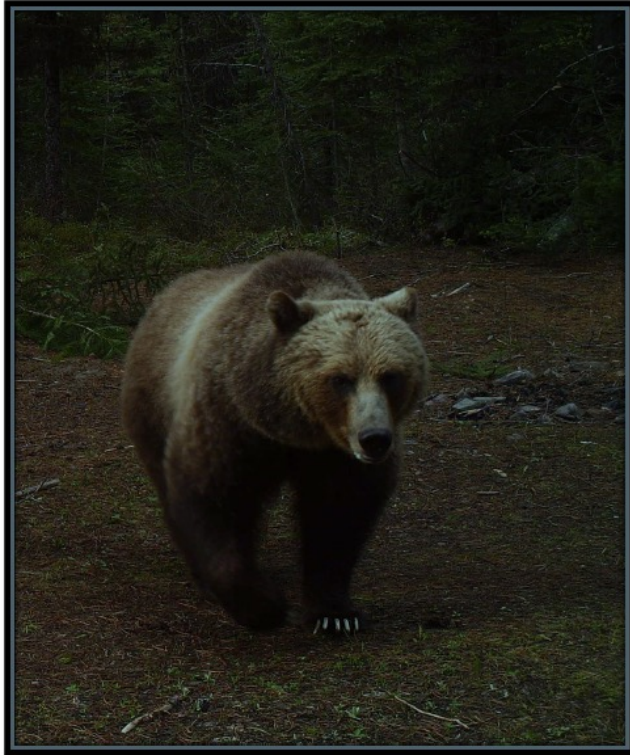
PRELIMINARY DATA – DO NOT CITE

# Number of individuals captured 2018

		Sex		
	Ageclass	Female	Male	Total
Research	Dependent	0	2	2
	Independent	9	9	18
	Total	9	11	20
Management	Dependent	4	5	9
	Independent	10	12	22
	Total	14	17	31
Grand total		23	28	51

Conservation Strategy for the Grizzly Bear in the Northern  
Continental Divide Ecosystem

June 2018



- *Occupancy threshold for females with cubs*
- *Independent female survival threshold*
- Independent female and male mortality thresholds



Missoulian

News

Obituaries

Sports

E-edition

Buy & Sell

27°

TOPICAL

Northern Continental Divide Ecosystem

# Record roadkill: Grizzly bears probe limits of highway tolerance

ROB CHANEY rchaney@missoulian.com Aug 4, 2018

TRY 1 MONTH FOR 99¢



Montana  
Public Radio



MTPR  
BBC World Service

Listen

News

Arts & Culture

Music

Support MTPR

Connect

Abc

## Grizzly Bear Deaths In Montana On Pace For Record Highs

By NICK MOTT • AUG 2, 2018



Tweet



Share

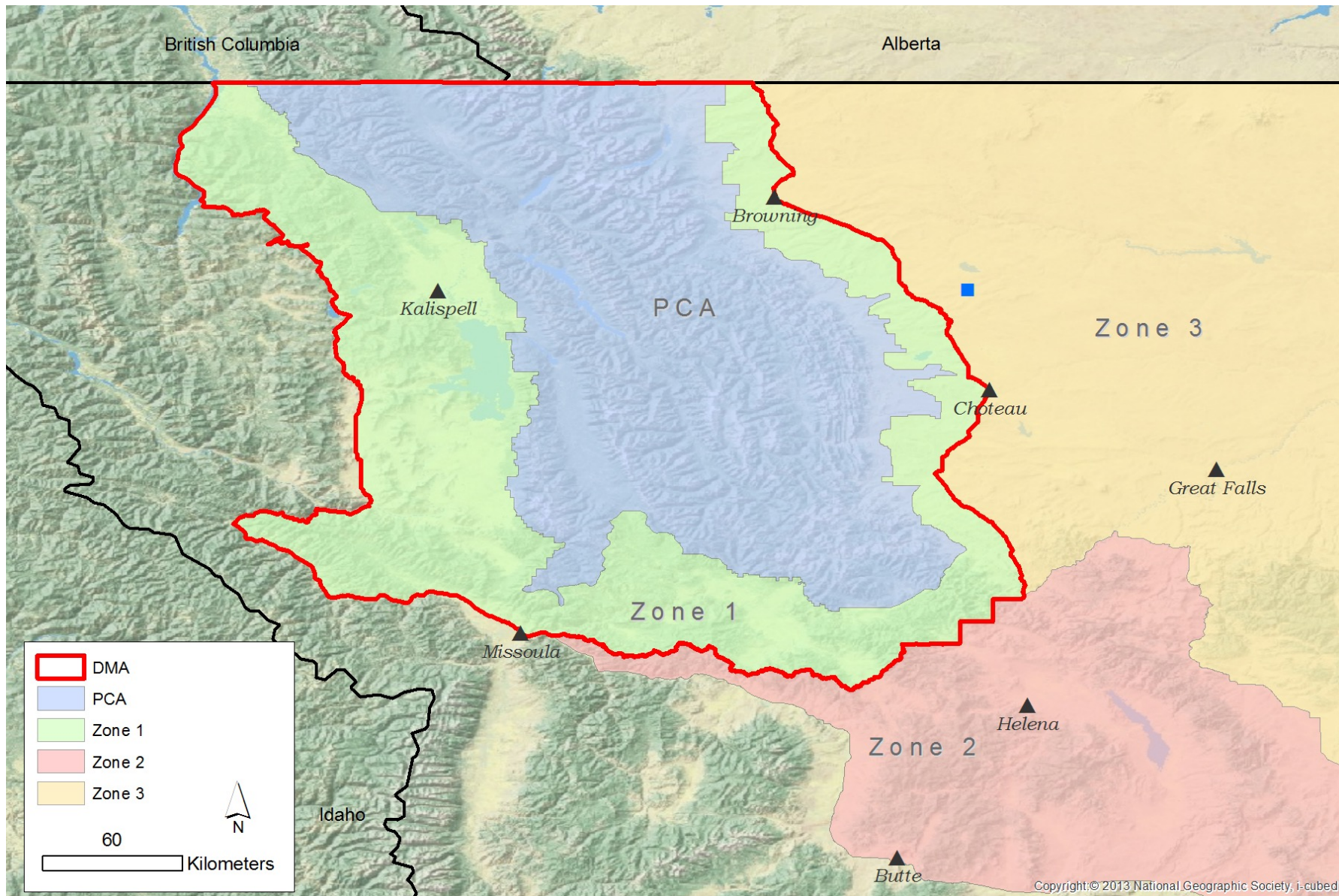


Google+



Email

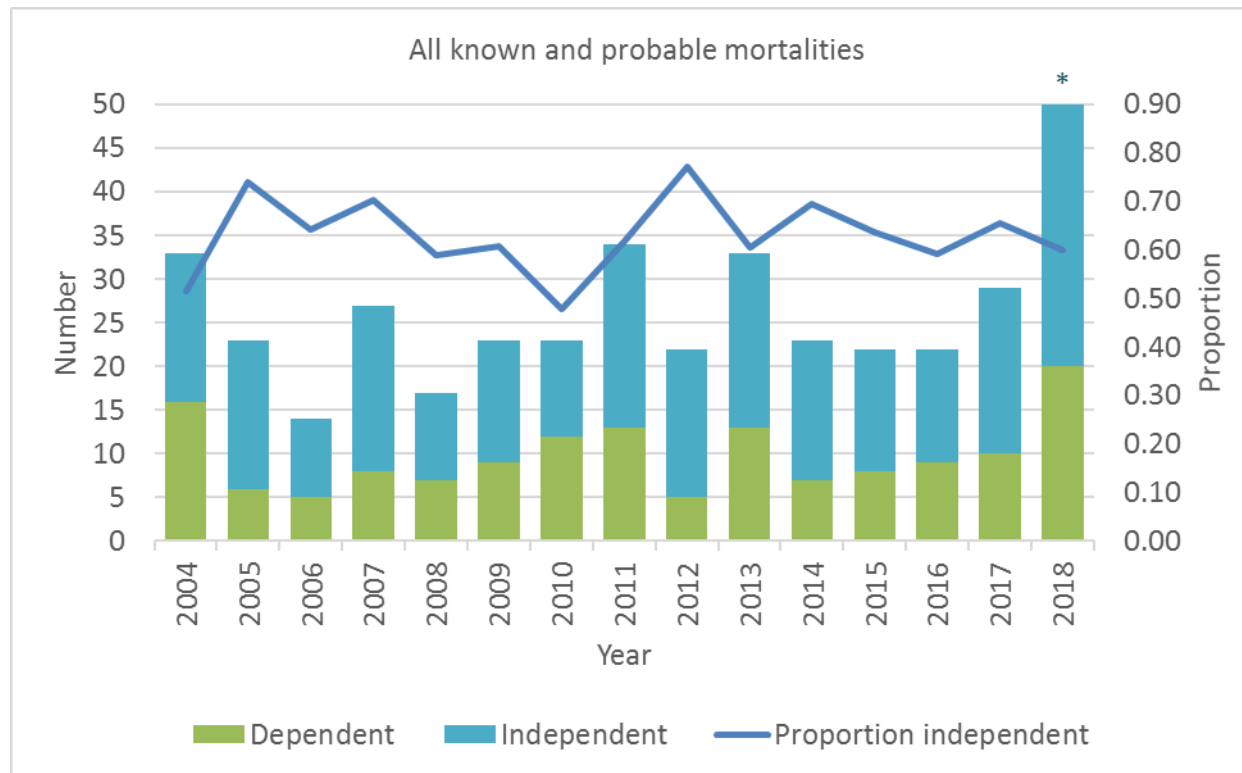




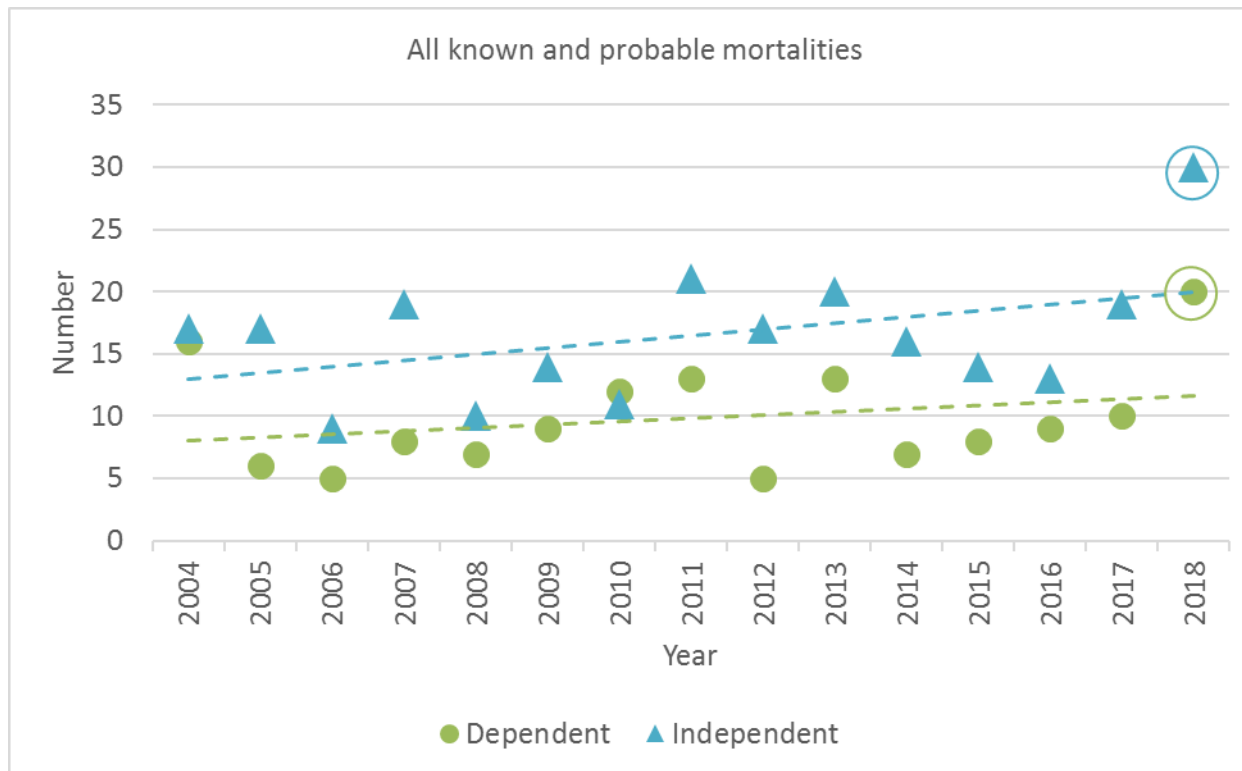
# All documented mortalities

		Sex			
	Ageclass	Female	Male	Unknown	Total
Inside DMA	Dependent	4	12	2	18
	Independent	10	15	0	25
	Total	14	27	2	43
Outside DMA	Dependent	1	1	0	2
	Independent	3	3	0	6
	Total	4	4	0	8
Grand total		18	30	2	51

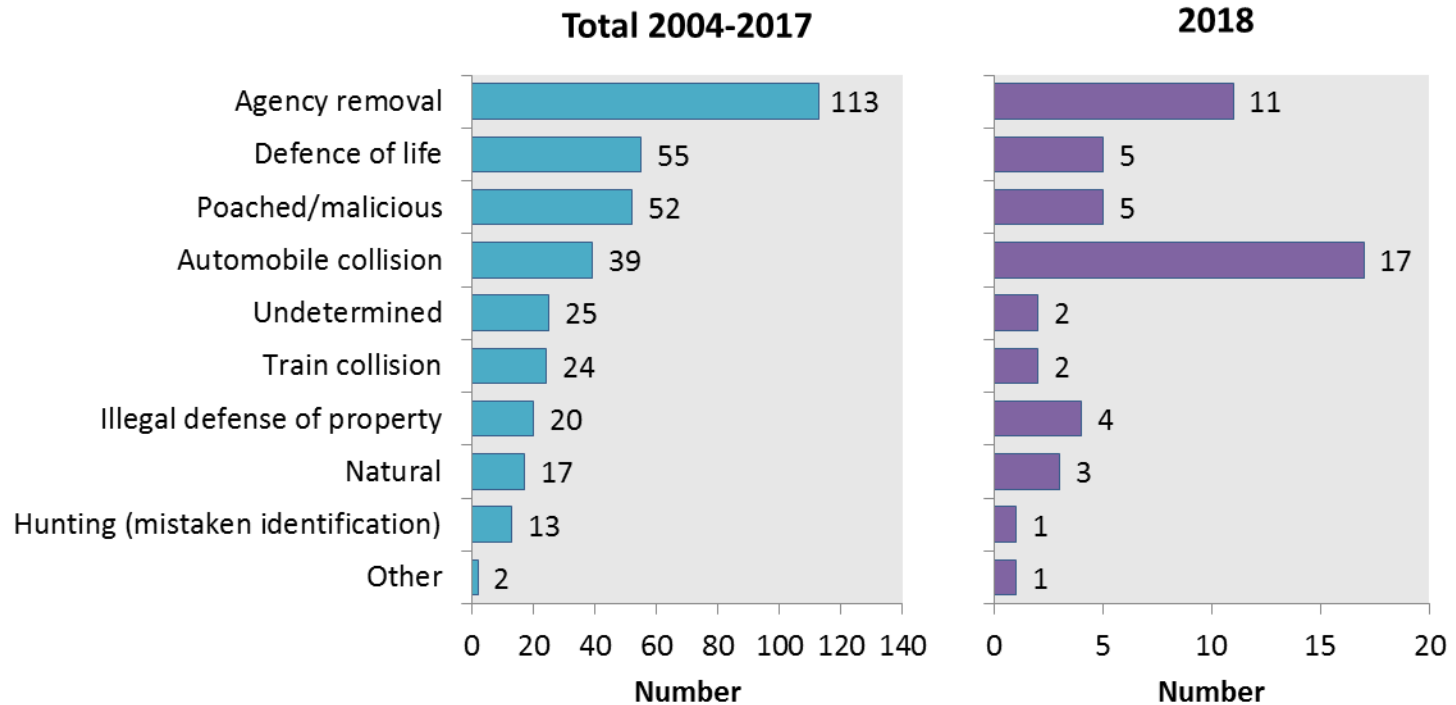
# All documented mortalities 2004-2018



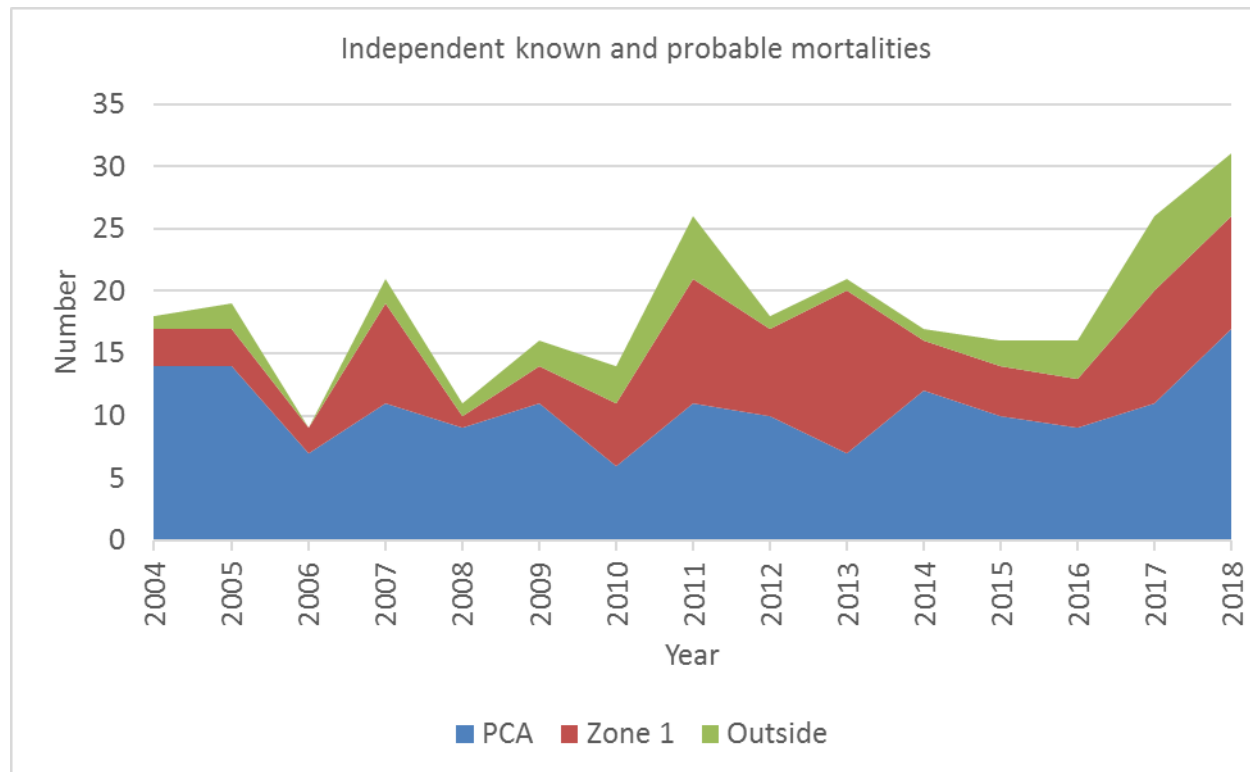
# Trend in documented mortalities 2004-2018



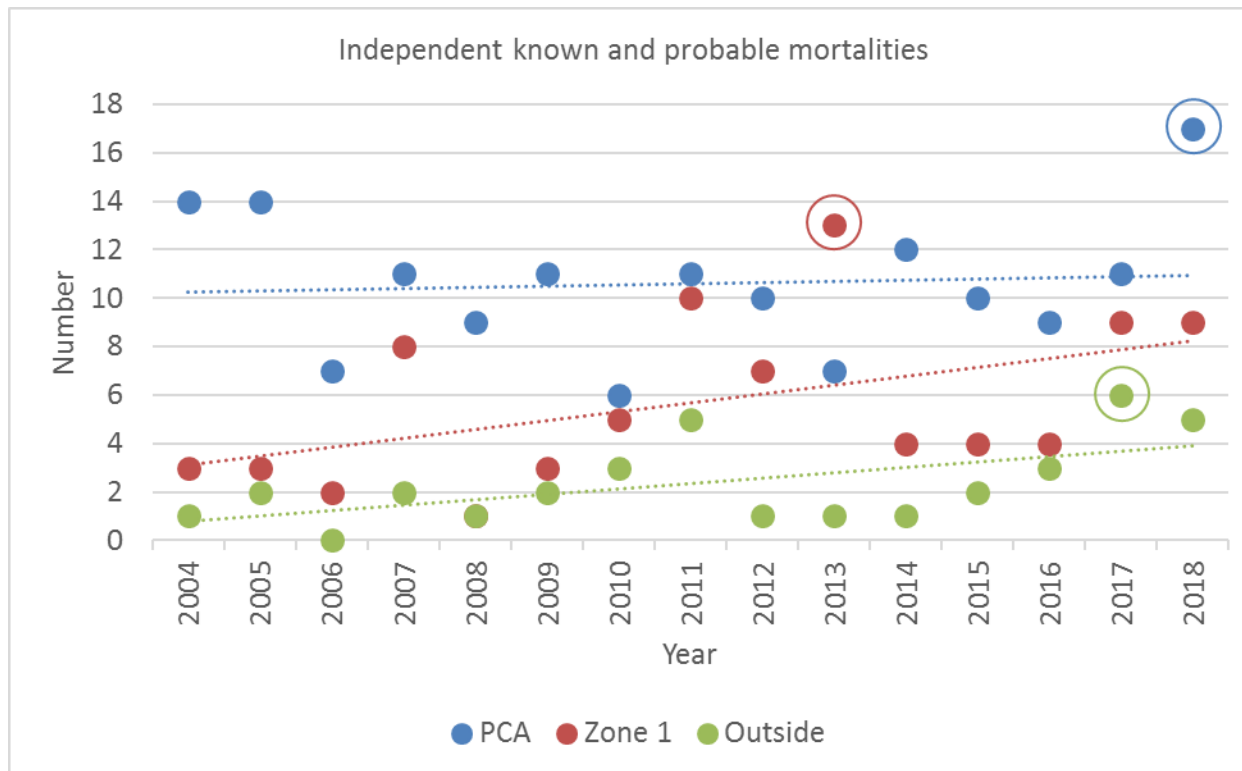
# Cause of death for documented mortalities



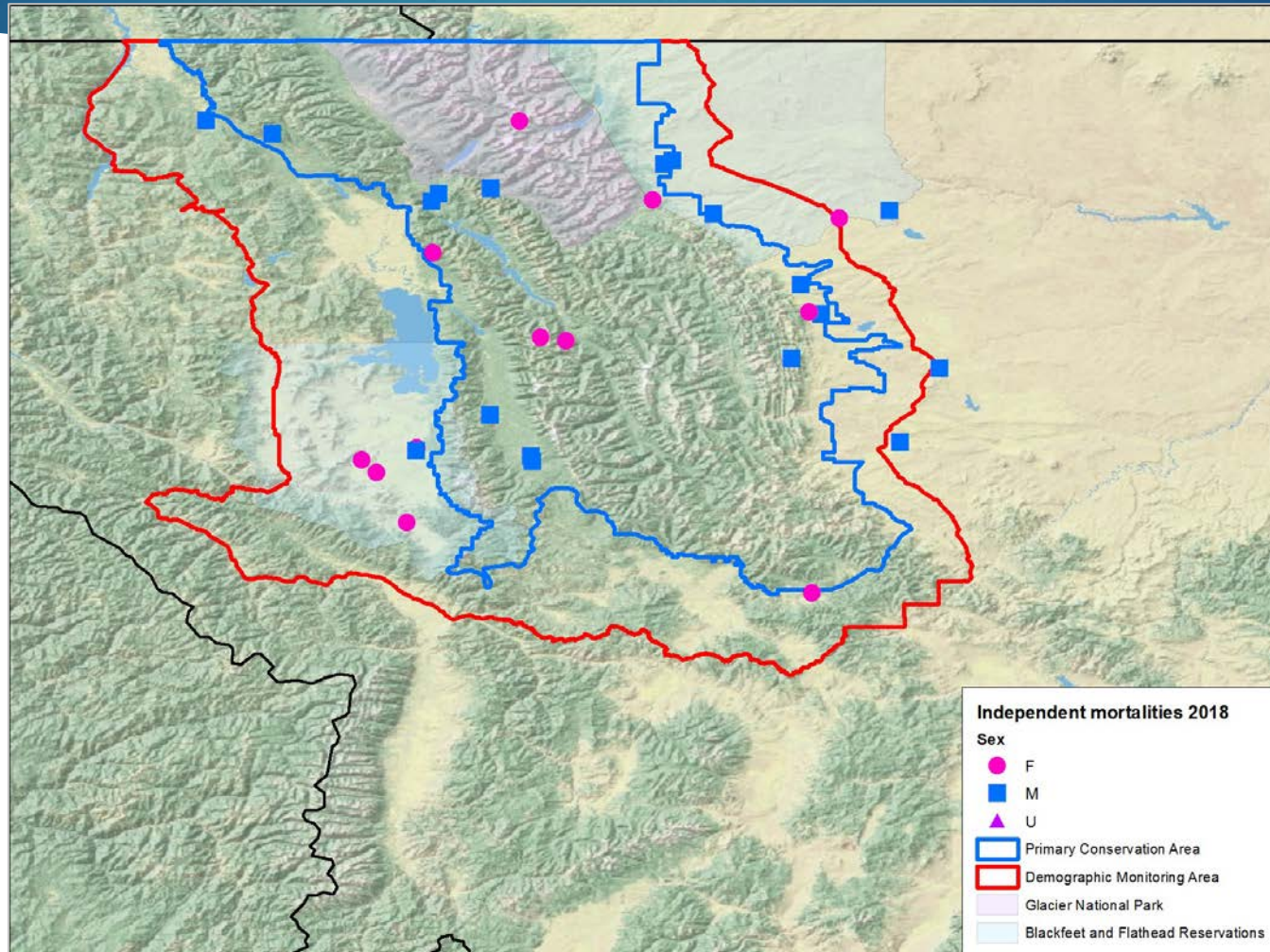
# Zone for independent documented mortalities



# Trend by zone for independent documented mortalities



# Locations of independent mortalities



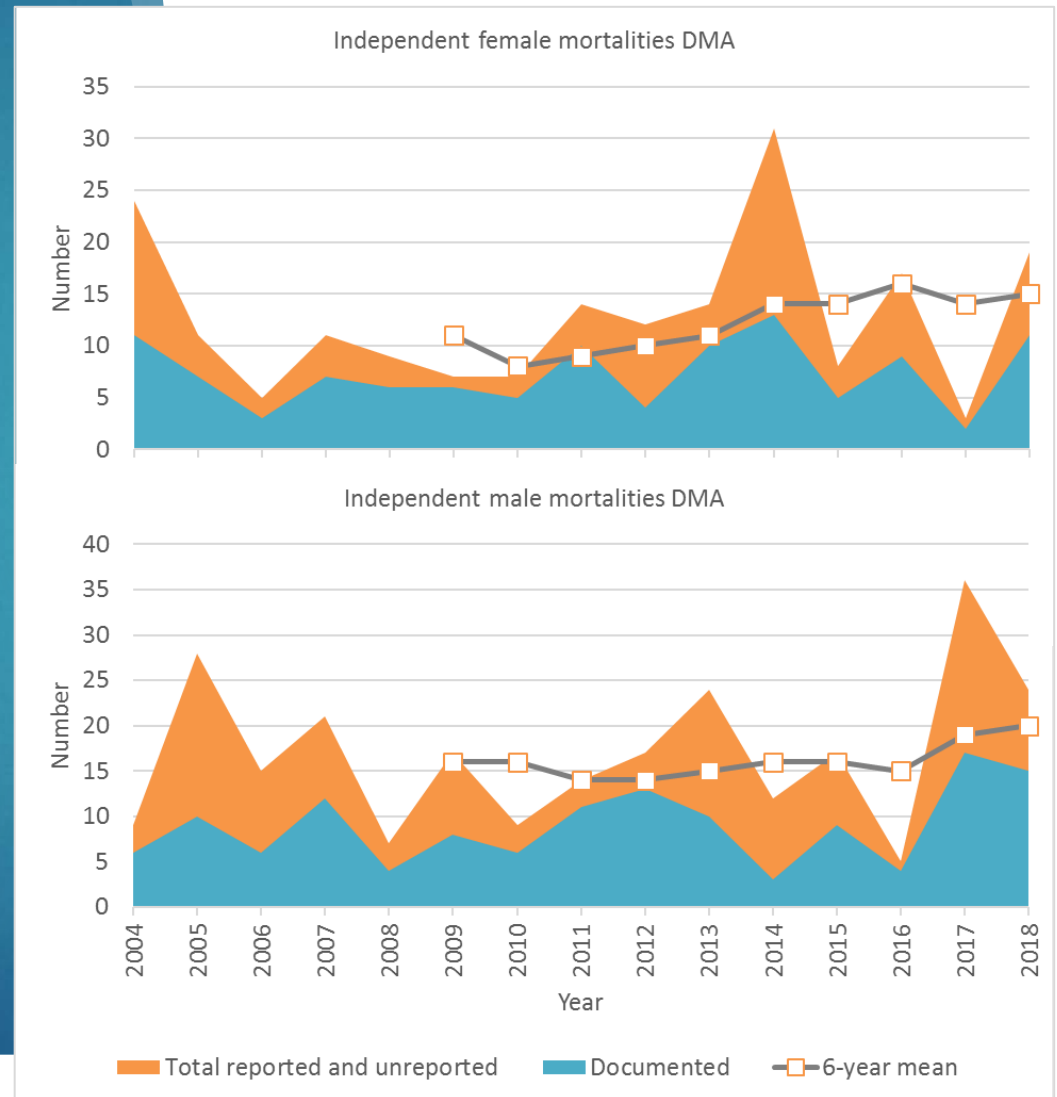
# Estimated reported and unreported DMA, independent only

Sex	Agency removal (A)	Telemetry (B)	Reported (high)	Reported (low)	Estimated reported and unreported (C)	Estimated total mortality (A+B+C)
Female	1	6	2	2	12	19
Male	6	1	6	2	17	24
Total	7	7	8	4	29	43

Documented

Estimated reported  
& unreported

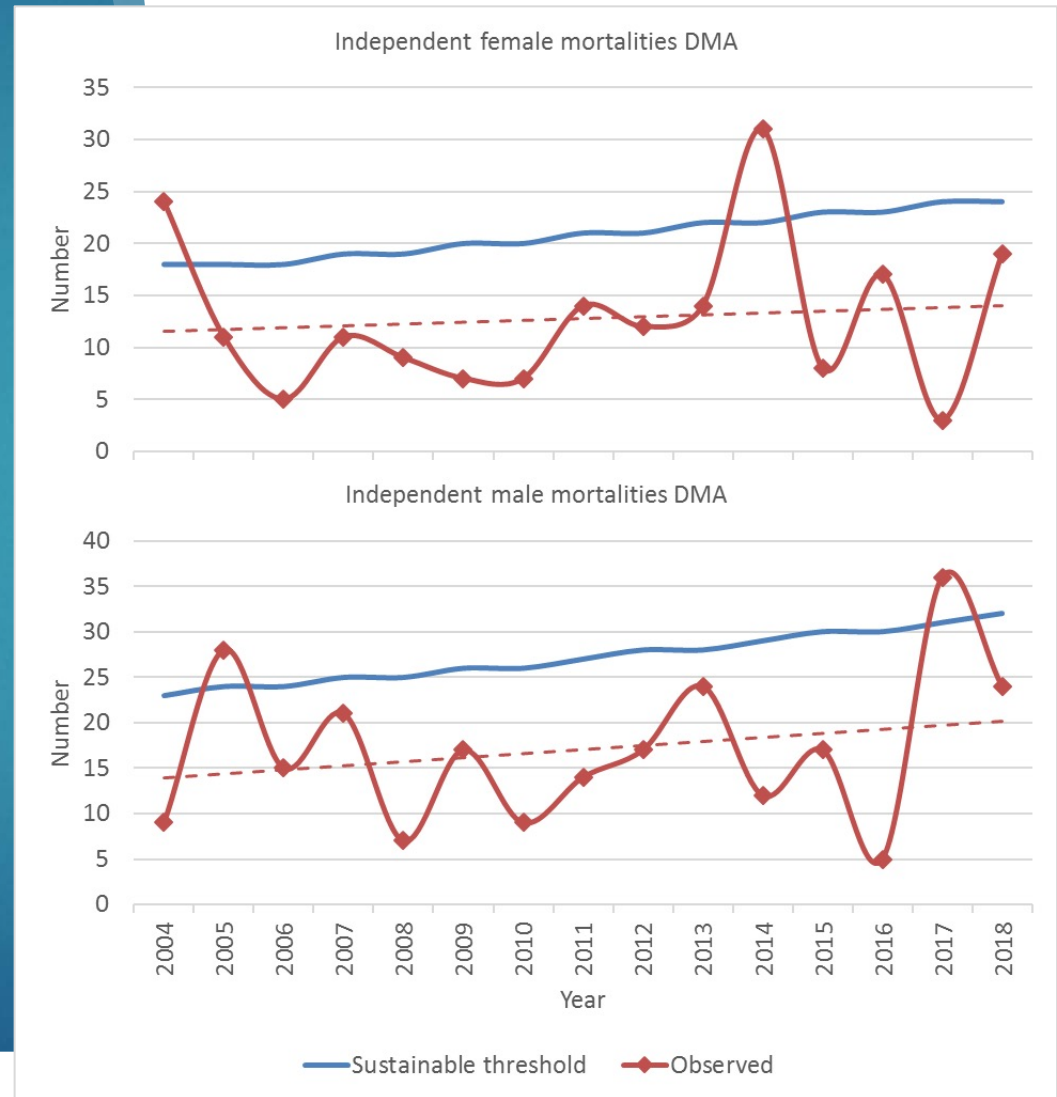
DMA, independent only



# Estimated reported & unreported

DMA, independent

Thresholds for stable  
trajectory – 2016 report

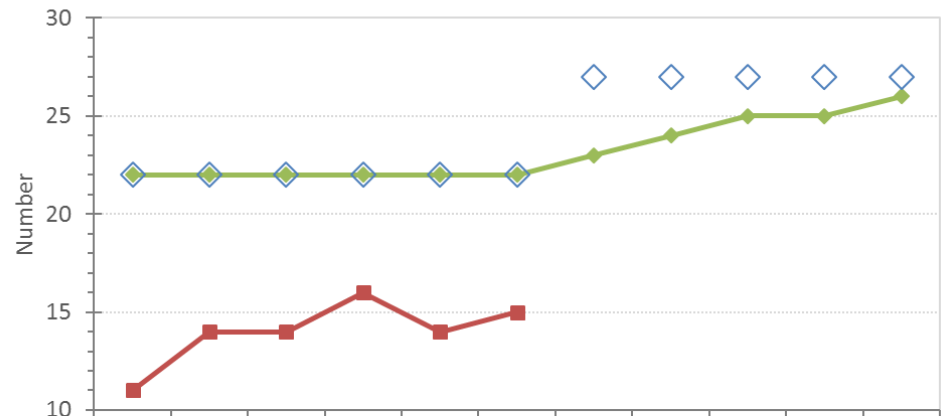


# Estimated reported & unreported

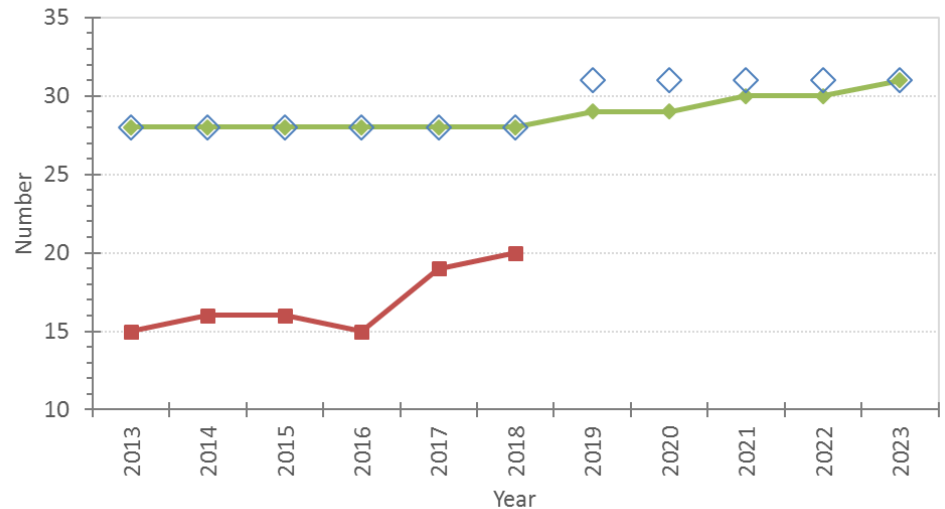
DMA, independent

Thresholds for maintaining  
90% probability  
population above 800  
bears – Conservation  
Strategy 2018

Independent female mortalities DMA



Independent male mortalities DMA



# Summary

- WILL REPORT OCCUPANCY AND INDEPENDENT FEMALE SURVIVAL BY SPRING
- MORTALITY BELOW THRESHOLDS