



IGBC Update Dec 2018 Northern Continental Divide Ecosystem



NCDE Subcommittee

GNP



Chair
Jeff Mow

FWP

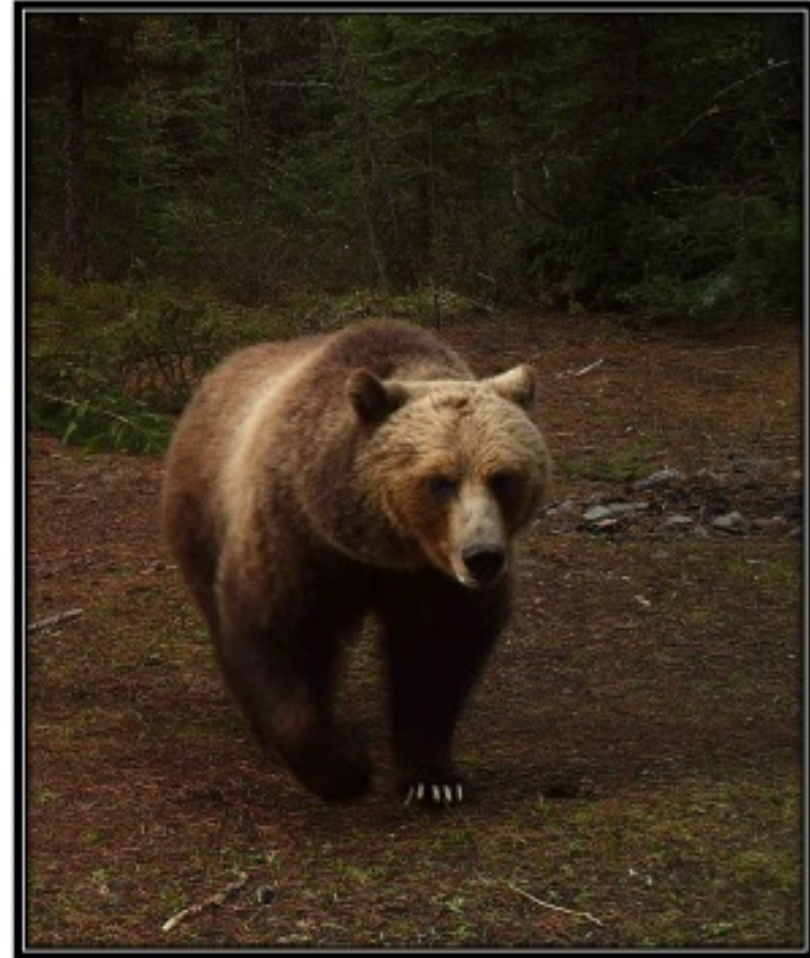


Vice Chair
Randy Arnold

Conservation Strategy

Finalized
June 2018

Conservation Strategy for the Grizzly Bear in the Northern Continental Divide Ecosystem 2018



[HOME](#)[ENVIRONMENT](#)[POLITICS](#)[BUSINESS](#)[VOICES](#)[GENERAL](#)[UM CORNER](#)

51 grizzly bear deaths in 2018, a record for Northern Rockies

2018 - Busy Year for Bear Management Specialists

[HOME](#) | [MONTANA NEWS, MONTANA OUTDOORS, NEWS](#)

Grizzly bear kills calf on Montana ranch

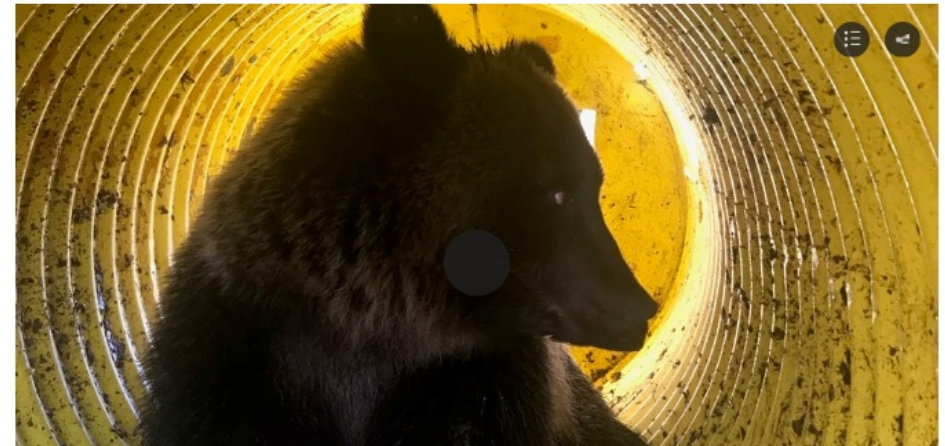
[MTN News](#)

9:59 am

[October 12, 2018](#)

Young grizzly captured on Stevensville golf course

by Kevin Maki and The Associated Press | Monday, October 29th 2018

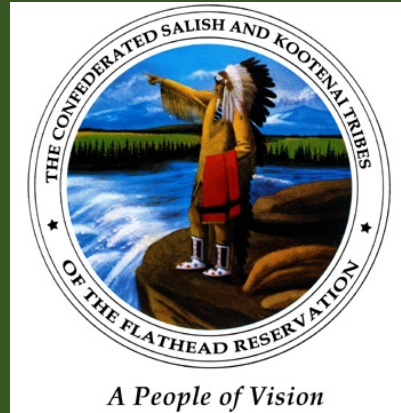


Glacier National Park

- 1 Mortality
- 2 Food Storage Incidents
- Accepted 2 Captured bears
- Second Busiest Year on Record, 3 M visitors



Confederated Salish-Kootenai Tribe



- 8 Mortalities (6 Highway Mortalities)
- 102 Highway 93 Crossings of Females with cubs
- Ongoing Issues of Bears and Corn
- “Bears are expanding”



Blackfeet Fish and Wildlife

- 9 Mortalities (5 self-defense)
- Over 140 Livestock Carcasses Removed
- Fewer Livestock Depredations
- Bear Spray Program for hunters and community



News & Features

Hunter Attacked by Grizzly Bear on Blackfeet Reservation

Man killed bear and was taken to the hospital with non-life threatening injuries



East Front – West Dist

- 9 Mortalities
- 47 Primary Conflicts
- Sig. Effort to Reduce conflicts
- Choteau Phone Tree – 900 contacts



East Front – East Dist

- 3 Mortalities
- 43 Primary Conflicts
- Sig. workload with Grain Spills
- Vacuum Truck Unable to Meet Demand
- Extensive Community Outreach – 22 Bear Spray Trainings





Northwest NCDE

- 8 Mortalities (5 conflict bears, 2 killed by trains, 1 illegal hunter)
- 22 Management Captures
- Extensive Conflict and Prevention Outreach – landowners, fruit trees, attractants,
- Connectivity/Augmentation with Cabinet Yaak



Prevention Efforts

18 Temporary or Permanent Electric Fences installed

13 Electric Fence Energizers Loaned

15 Critter Gitters Loaned

20 Kodiak Bear Resistant Garbage Containers Loaned

20 Educational Presentations and Workshops



CYE

NCDE

Release

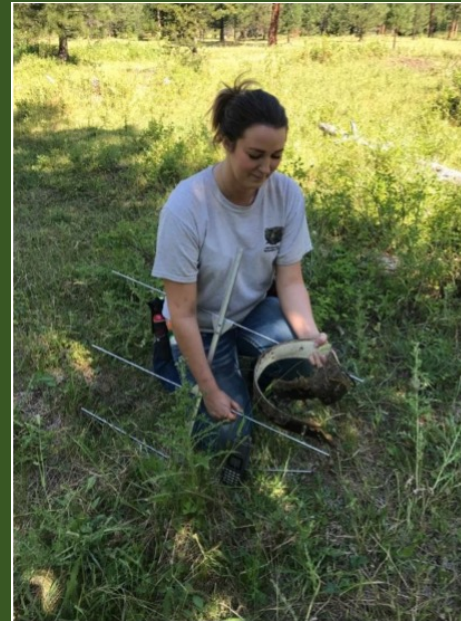
Capture



30 mi

South Side – NCDE

- 4 Mortalities (Sow with 3 cubs)
- 80 conflicts across the area
- 3 hunter encounters
- 5 bears trapped outside recovery area – interim protocols
- Bears Moving into Bitterroot Valley
- Outreach/partnership efforts – fruit trees



Fruit Trees



MTFWP Admin. Rulemaking

- Adopt Demographic Objectives from Chapter 2 of the Conservation Strategy
- >5200 Comments Received
- Commission to Vote on 12/10



NCDE Connectivity Panel

- Fall NCDE Meeting Panel on Connectivity
- Southern NCDE Focus
- 6 Panel Members Representing:
Ranching, NGO/Land Trusts, WMI, and
MT DOT

Outcomes:

- Importance of DOT Coordination
- Potential of a new working group within
NCDE to focus on connectivity
- Recognize Significance of Conflict Issues
Across non-Public lands



NCDE Workplan for 2019

- Delisting – some activities on hold pending decision on GYE
- Continue to Respond to Conflicts and Utilize Outreach to Minimize them.
- Initiate engagement with new partners and engage new working group members to address connectivity.





Questions?

Grizzly Bear Management

Montana Fish, Wildlife & Parks
Region 1



Topics

- *Grizzly Bear Management:

 - Prevention

 - Conflicts

 - Mortalities

- *Cabinet Mountains Augmentation

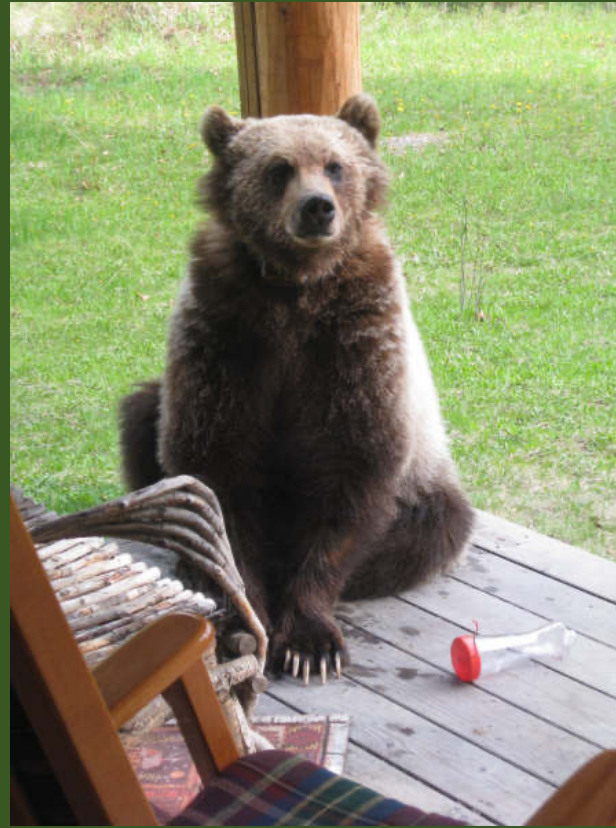
- *Connectivity to Cabinet/Yaak



Grizzly Bear Management 2018



Goal: Minimize Conflicts Between People and Grizzly Bears



Objective:

To minimize grizzly bear conflicts by working with landowners to identify and secure attractants.



Prevention Efforts

18 Temporary or Permanent Electric Fences installed

13 Electric Fence Energizers Loaned

15 Critter Gitters Loaned

20 Kodiak Bear Resistant Garbage Containers Loaned

20 Educational Presentations and Workshops



Objective:
To work with agencies to
promote food storage on
public lands to minimize
grizzly bear conflicts.



Objective:
To work with city, county,
state, and federal
governments to prevent
grizzly bear conflicts.

Flathead County

Ashley Lake – Electric Fence

Coram – Electric Fence

Olney – Electric Fence

Essex – Electric Fence

Bigfork – Electric Fence

Creston – Chain link

Lake County

Ferndale – Automated Lids

Swan Lake – Automated Lids

Lincoln County

Fortine

Glen Lake – Electric Fence

Pinkham – Electric Fence

Trego – Electric Fence

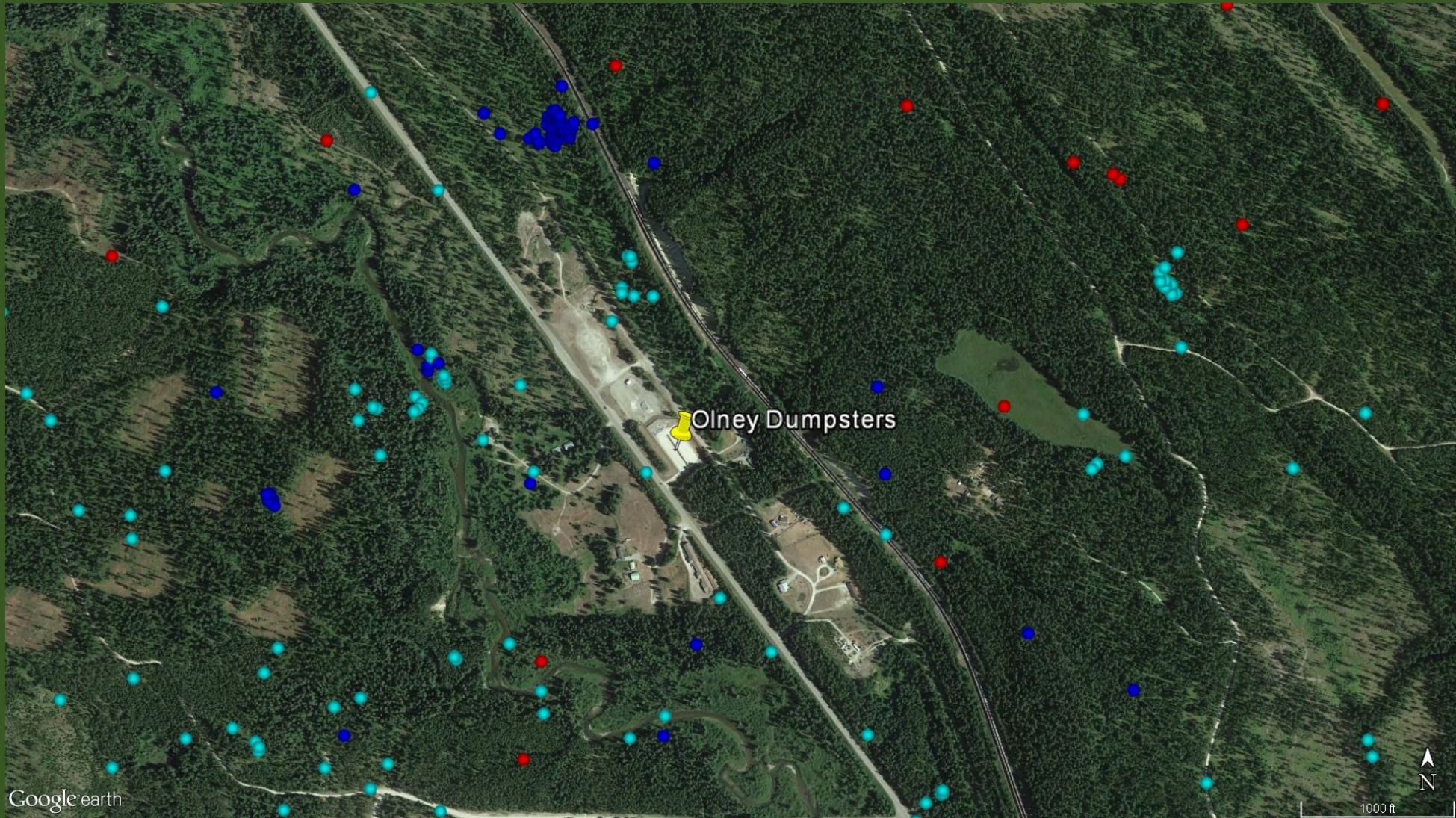
Missoula County

Condon – No Service

SEC – 140 bins & 24 dumpsters



Olney Dumpsters (Electrified Fence)



Google earth



Objective:
To provide information to
the media on how
people can minimize
grizzly bear conflicts.



Objective:

To respond to grizzly bear conflicts on private and public lands.





9/22/2018 1:53 AM



42°F 5°C

10-04-2018 11:35:12

Fruit Trees



Number of Grizzly Bear Captures Management Region 1 2018

22 captures of 19 individual bears.

1 Adult Male
8 Subadult Males
3 Yearling Males
2 COY Males
3 Adult Females
1 Female Yearling
1 Female COY



Number of Grizzly Bear Captures Management Region 1 1993 to the Present

440 captures of 253 individual bears.
Average is 17 captures per year.

2016 we had 16 captures.

2017 we had 21 captures.

2018 we have 22 captures to date.



Mortalities (Trains and Automobiles)



Mortalities (Mistaken ID)



Mortalities (5 Management Removals)

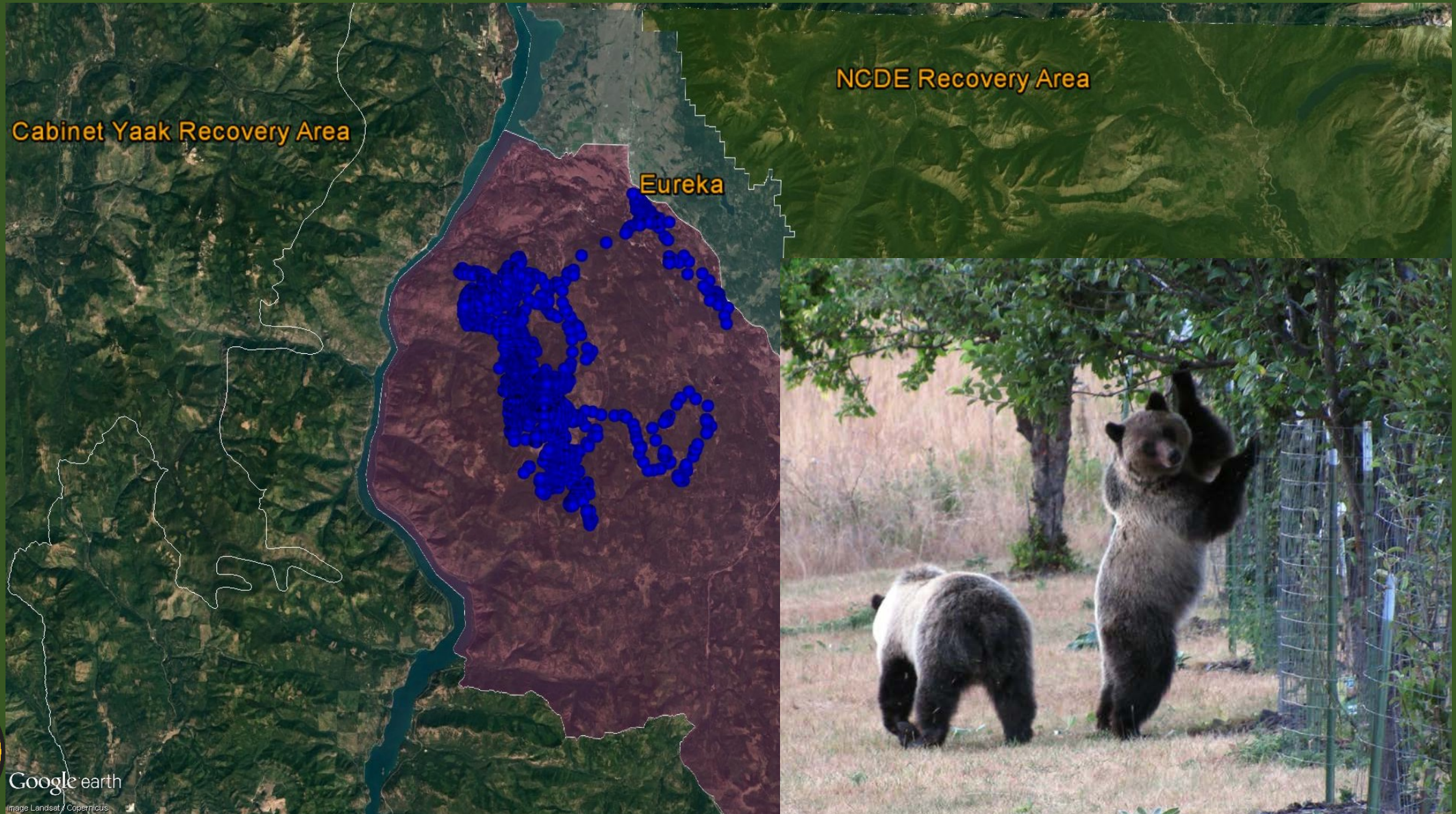


Cabinet Mountains Augmentation

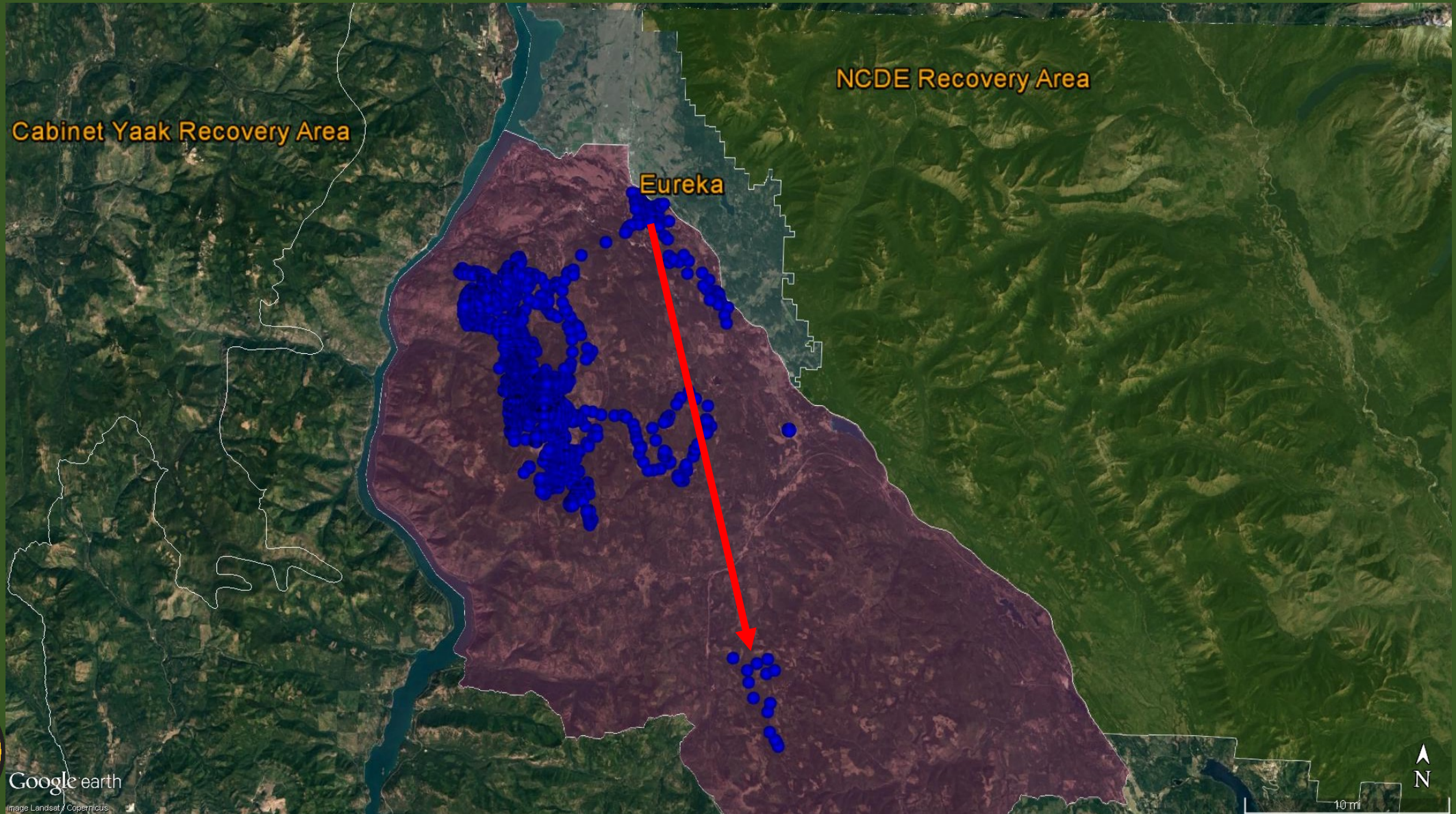




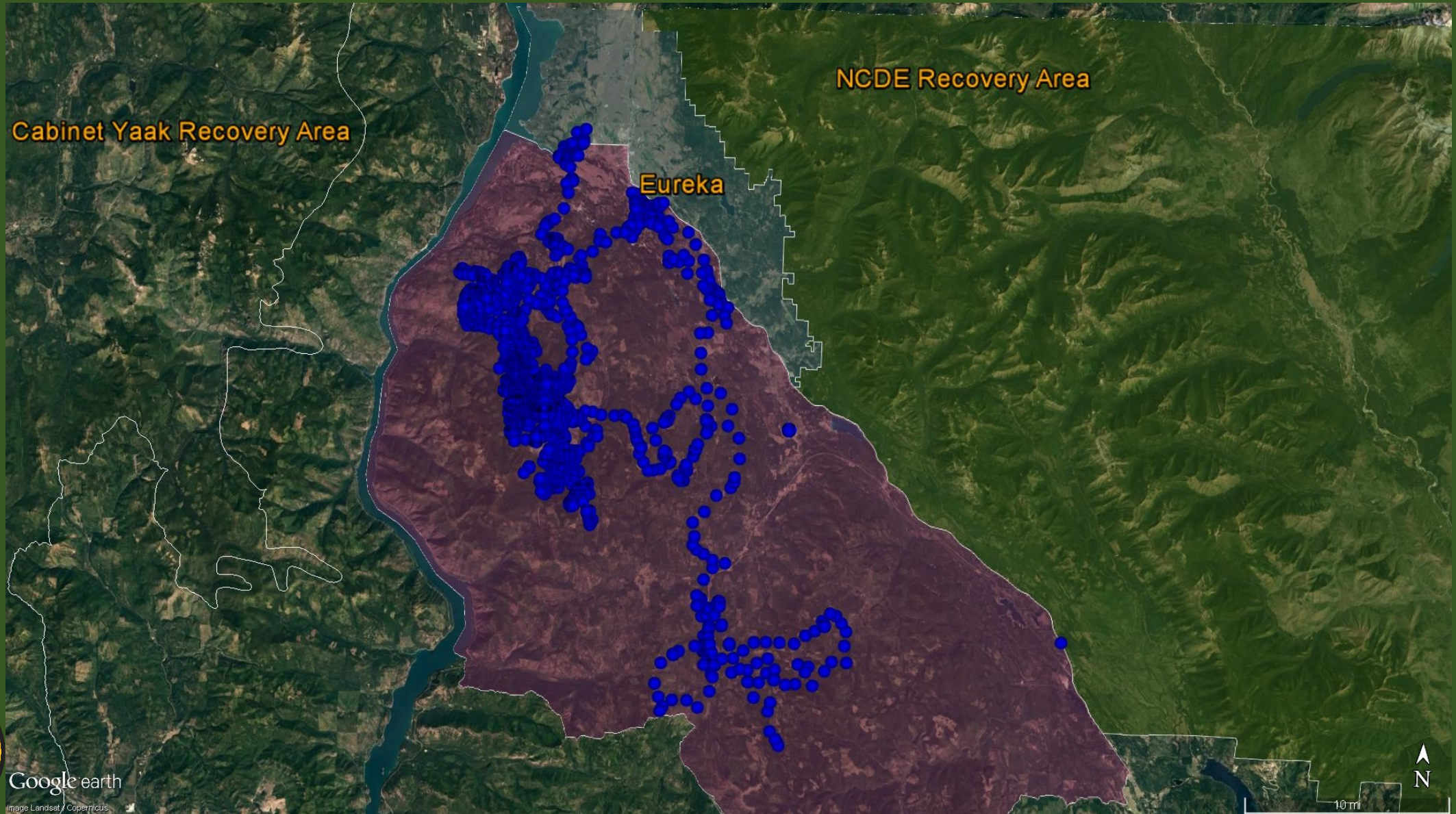
2017 GPS Locations For Yrlg (#2) To Eureka



2017 Translocation of Yrlg (#2) to Sunday Cr



2017 Yearling (#2) Returned to Eureka



McGregor Lake Grizzly





CYE

NCDE

Release

Capture



30 mi