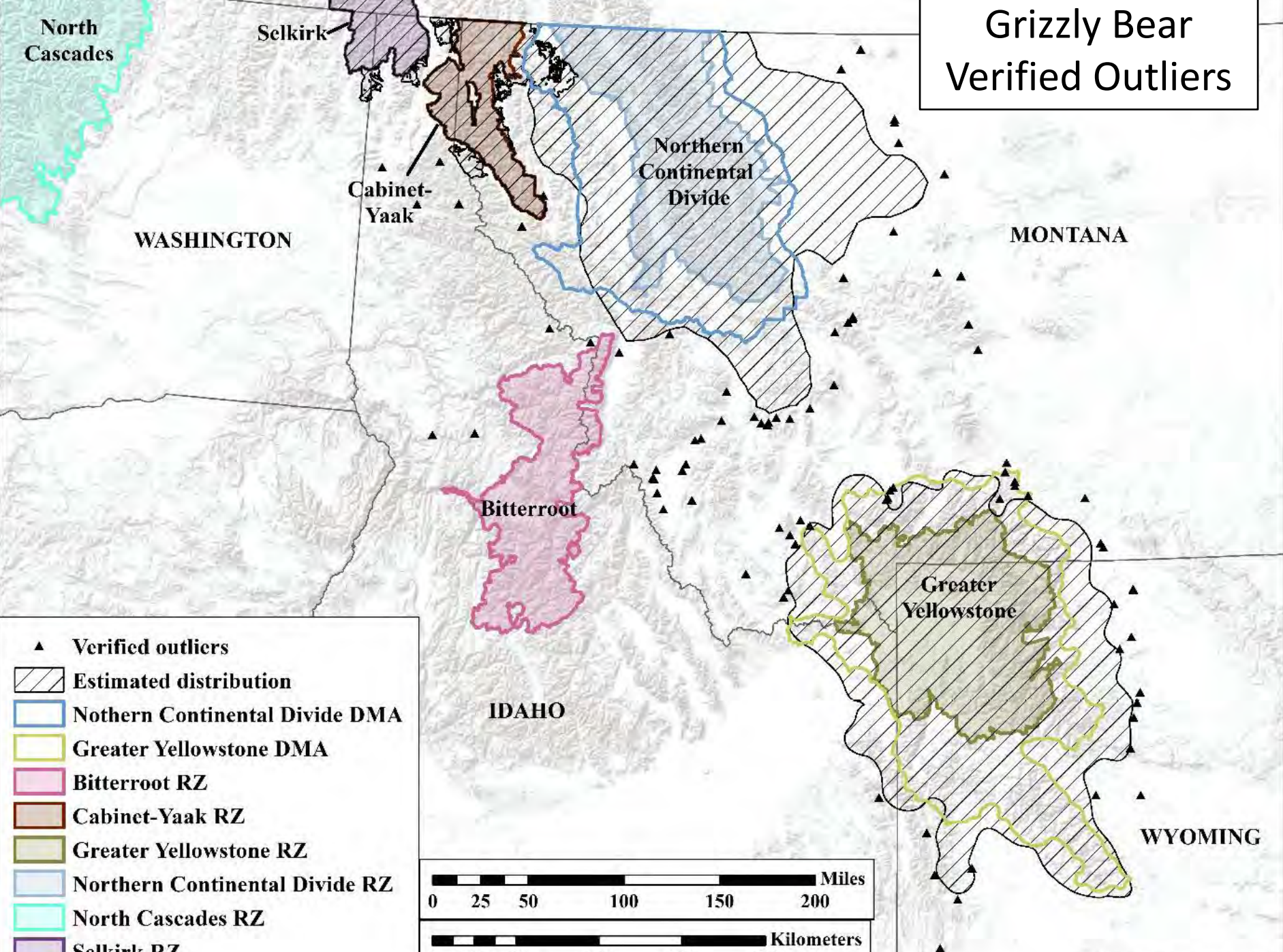




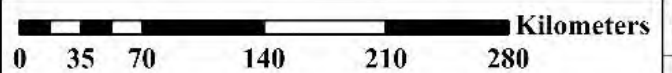
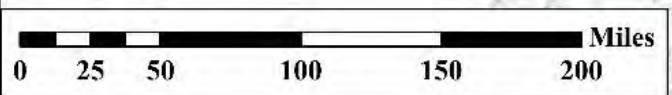
SW Montana Grizzly Bear DNA Monitoring



Grizzly Bear Verified Outliers



- ▲ Verified outliers
- ▨ Estimated distribution
- ▭ Northern Continental Divide DMA
- ▭ Greater Yellowstone DMA
- ▭ Bitterroot RZ
- ▭ Cabinet-Yaak RZ
- ▭ Greater Yellowstone RZ
- ▭ Northern Continental Divide RZ
- ▭ North Cascades RZ
- ▭ Selkirk RZ



Sources: Esri, USGS, NOAA

Proposed 2021 DNA / Camera Survey

Goal: Document presence of grizzly bears in Southwest Montana outside current distributions

Project description:

- Crews:
 - USFWS (1 crew of 2 ppl)
 - Defenders of Wildlife (volunteers)?
 - Lolo NF
- Survey sites: ~10-30 sites each (USFWS, DOW, Lolo NF); based on sightings and recommendations of biologists.



Proposed 2021 DNA / Camera Survey

Project description:

- Timing:
 - Summer 2021: mid-May through end of August
 - Future work TBD.
- Methods (CYE/SE protocol):
 - Hair corrals (with lure, no bait) and cameras
 - Sites > 200m open roads, > 500m campgrounds, >100m closed roads and trails



Potential Sampling Areas 2021

USFWS:

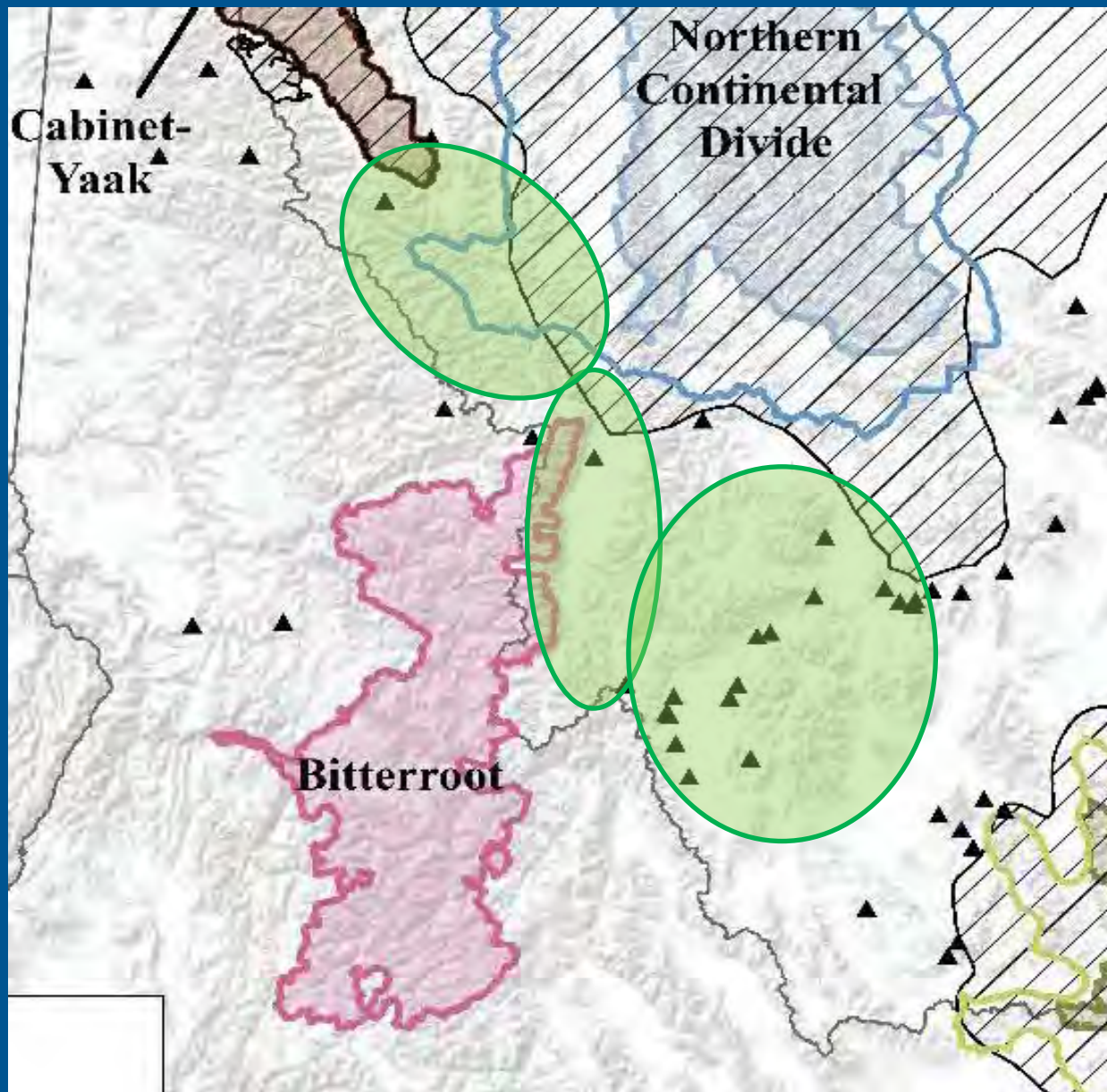
Big Hole
Pintler Range
Anaconda Range
Flint Creek Range
John Long Mtns

Defenders of Wildlife:

Sapphire Mtns
Lower Clark Fork

Lolo NF:

Ninemile Divide
NE Bitterroot Mtns



Proposed 2021 DNA / Camera Survey

Future Actions:

- Coordination Needs
 - Work with USFS and MFWP biologists to finalize sites
 - Report sightings during field season
- Outreach Needs
 - USFWS press release
 - Q&A sheet
- Equipment Needs
 - Cameras

