

Grizzly Bear Conservation in Wyoming

2020 Update



STAY SAFE. KEEP BEARS WILD.

- Pick ripe fruit from trees/bushes promptly and keep the ground clear of fallen fruit
- Keep trash in secure building
- Take trash out the morning of pickup, not the night before
- Feed pets and store pet food inside
- Store stock feed in a secure building or bear resistant container
- Use bird feeders November 1 through March 15 while bears are denning
- Let barbecue burn for 5 minutes after use to remove grease and odor



Please keep all garbage, birdseed and livestock feed unavailable to bears.



Wyoming Game and Fish Department
Large Carnivore Section



Role of Wyoming Game and Fish

- Maintain viable populations of large carnivores on the landscape using a science based adaptive approach
 - Specific to grizzly bears serve as members of the Interagency Grizzly Bear Study Team to demonstrate recovery of GYE grizzly bears
- Proactively manage to mitigate human/wildlife conflicts
- Provide information and education on large carnivore management and safety

Large Carnivore Management

- WIDE SPECTRUM of viewpoints with large carnivores; more polarity depending on species – but ALWAYS opinions



A Year of Adversity and Flexibility

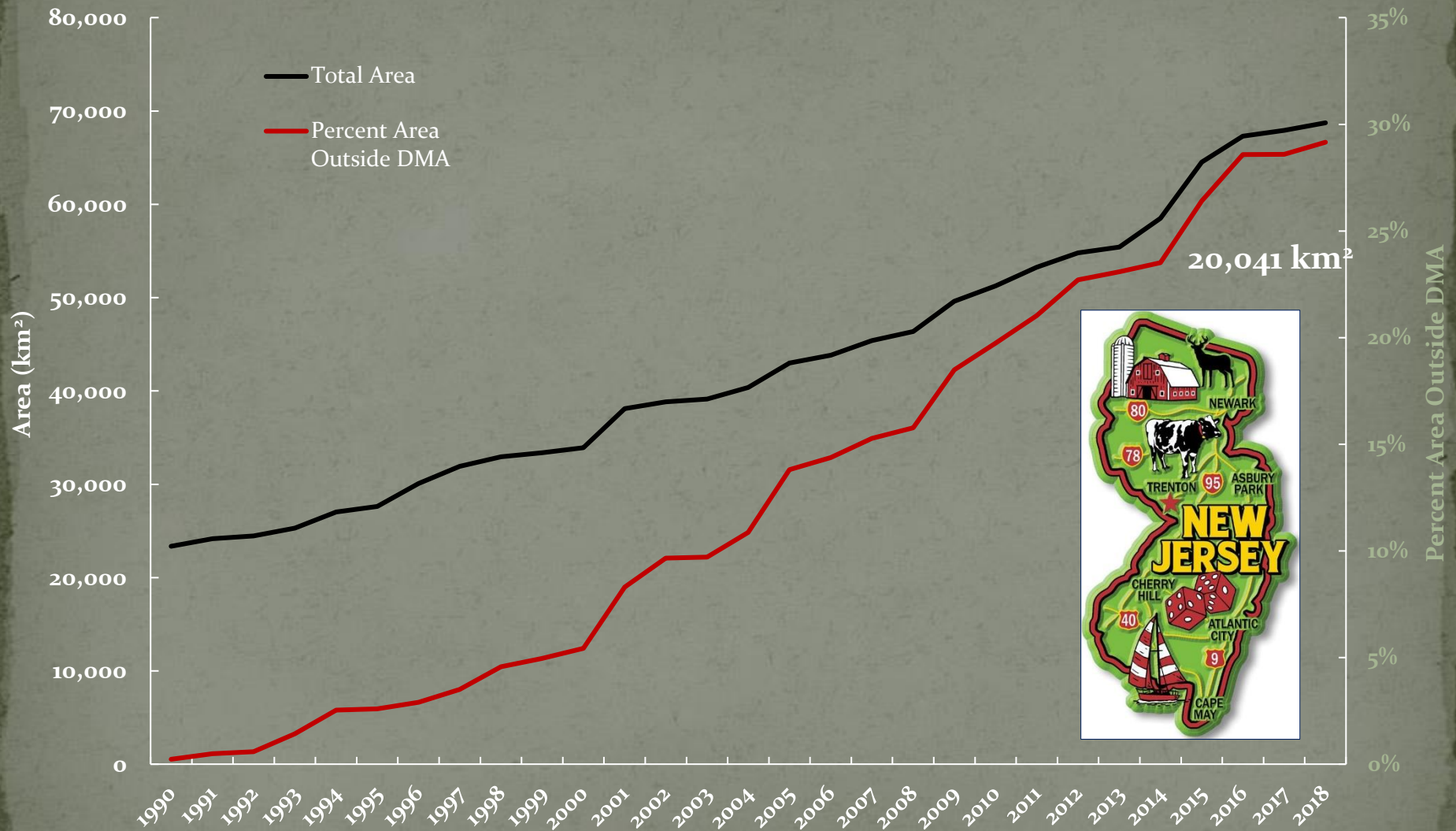


Increasing Conflict Potential

- Increase in grizzly bear numbers and distribution
- Development in rural areas, “exurban expansion”
- Increased recreation and use of grizzly bear habitats



Area of Range and Percent Outside DMA

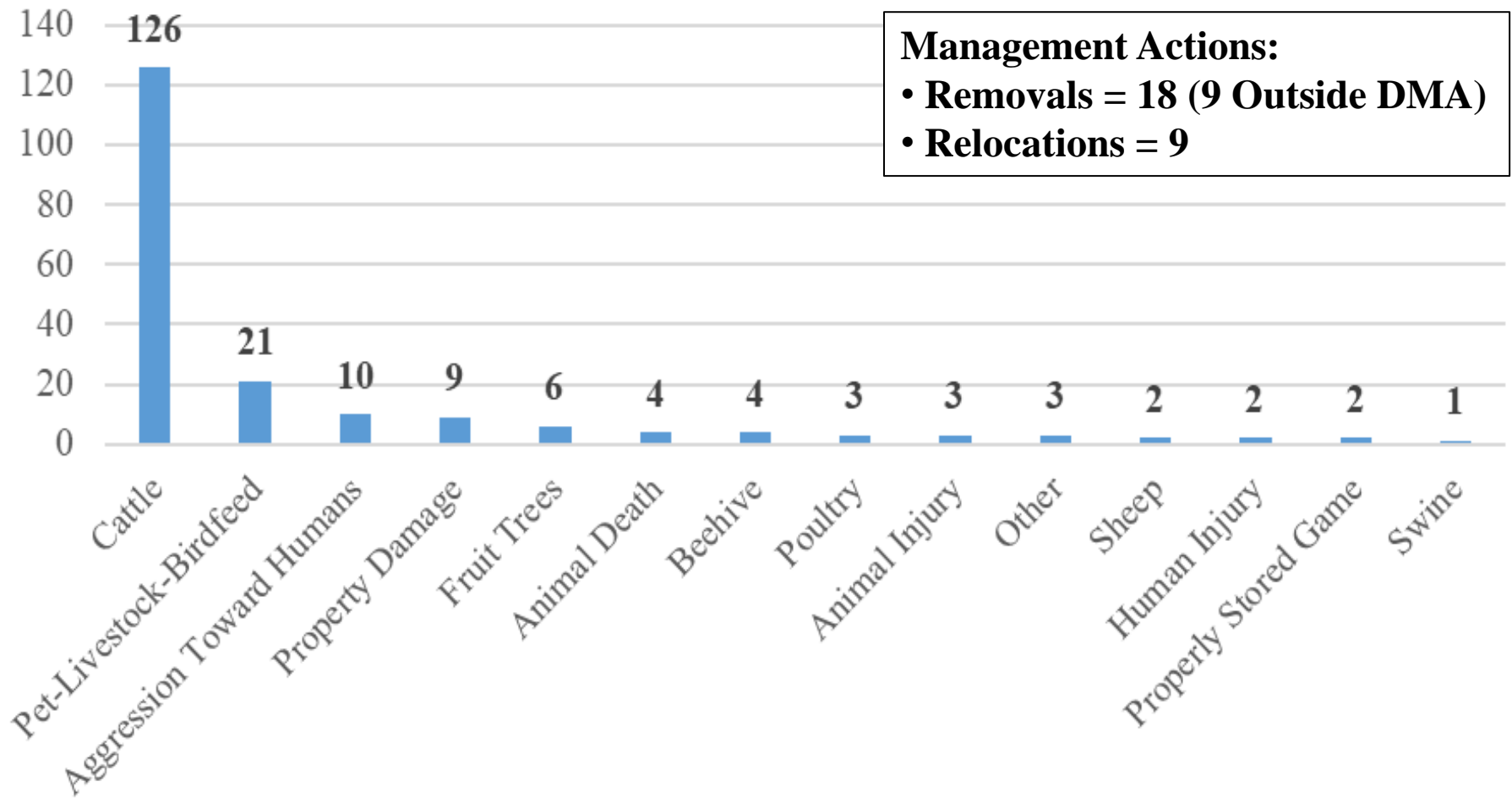


Management of Large Carnivore Conflicts takes
a Significant Amount of Manpower

THANK YOU to everyone who contributes



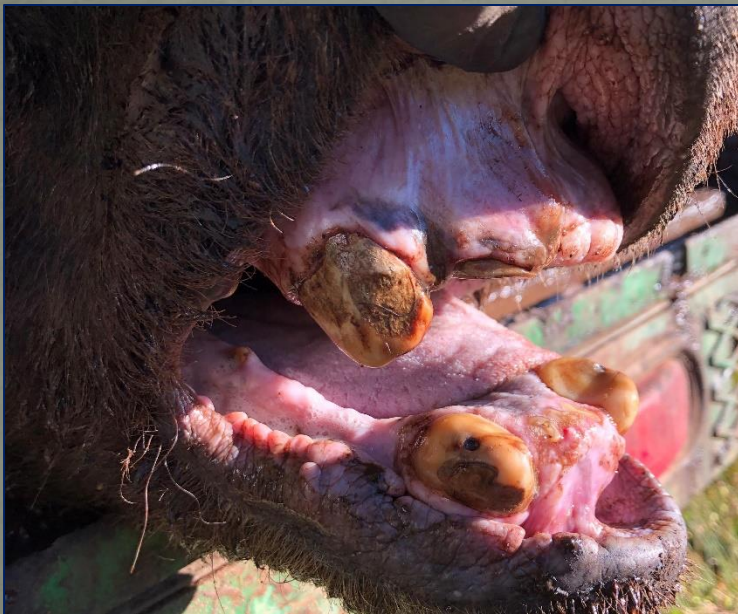
WY 2020 Grizzly Bear Conflicts



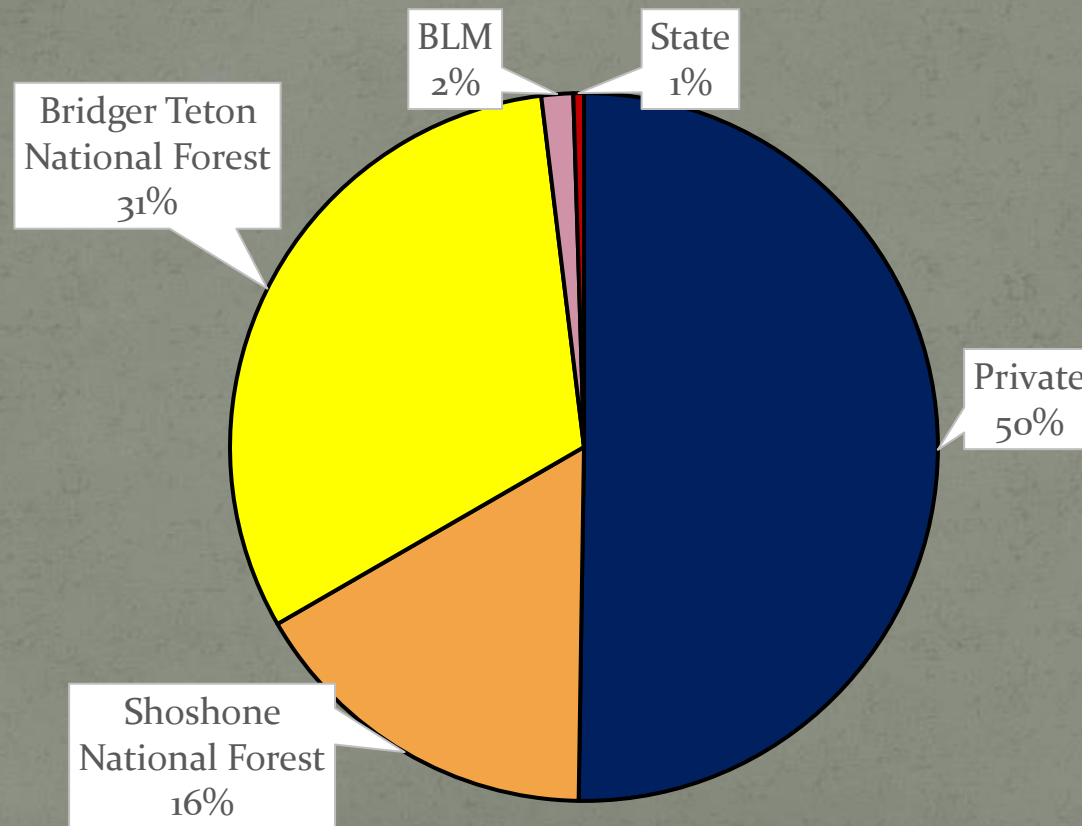
208 TOTAL

Conservation and Conflict Management

- Surpassed **1,000 bears** captured and radiomarked for monitoring and conflict management purposes

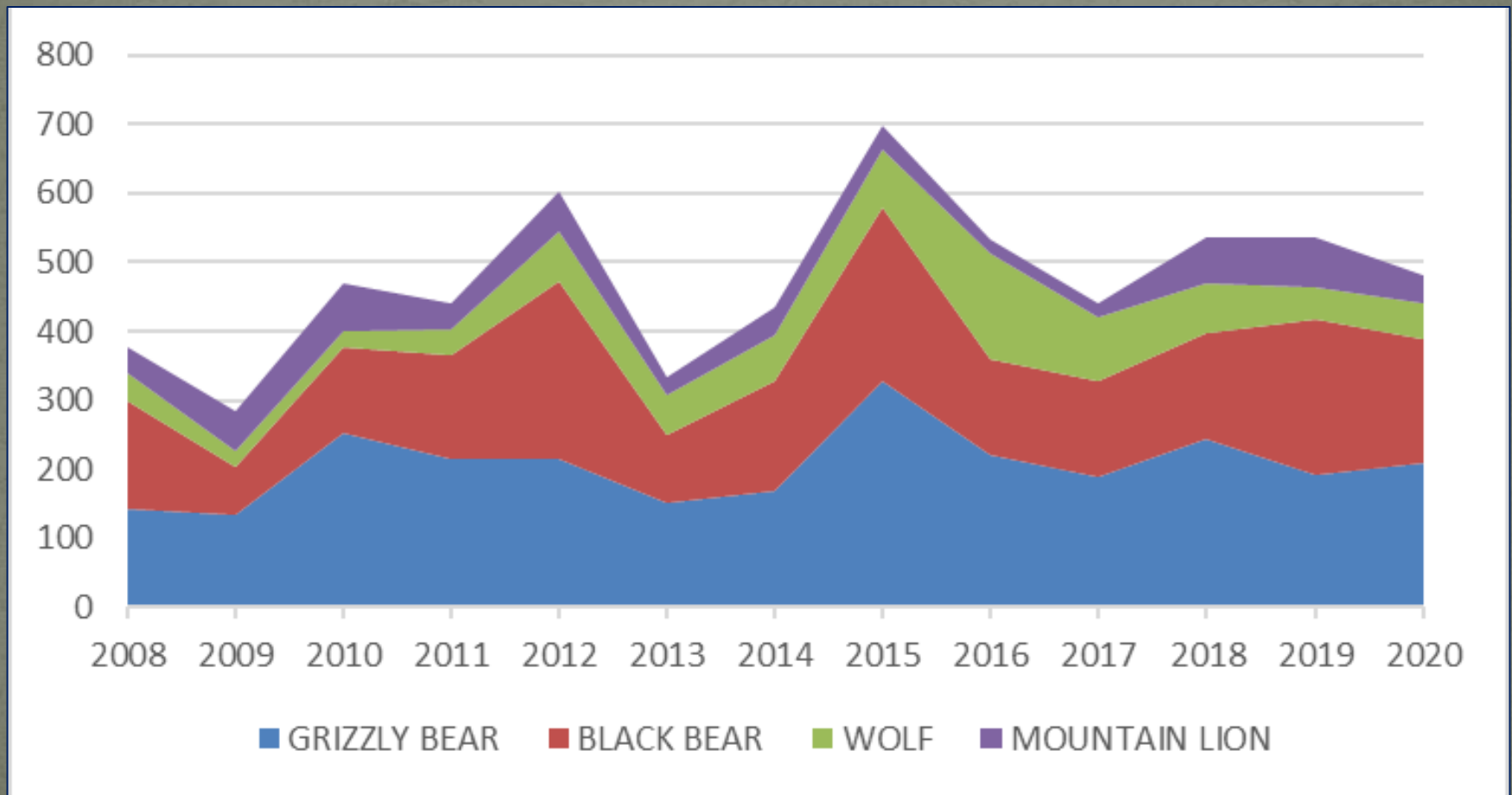


Conflict Breakdown by Jurisdiction

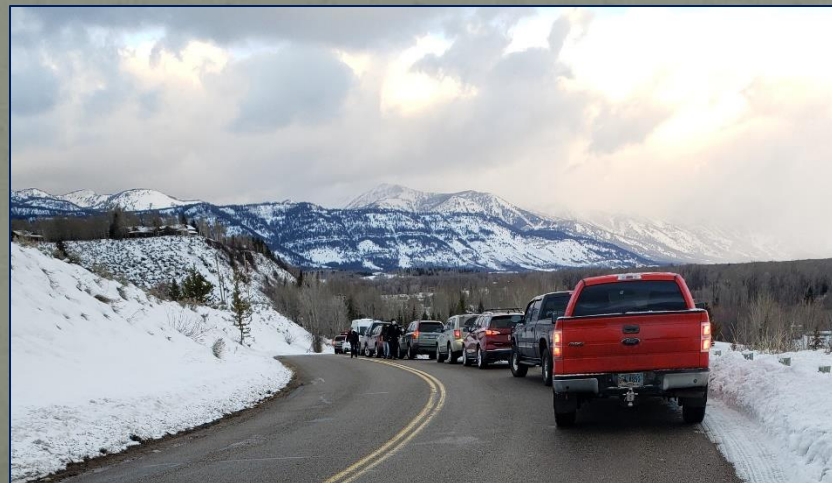


WY 2008-2020

Large Carnivore Conflicts



“Free America” – Covid and Recreation



Field Response Program

- Conflict Management/Prevention
 - Information and Education
 - Securing Attractants
- Management of Individual Animals
 - Aversive Conditioning
 - Deterrence and Protection
 - Relocation
 - Removal
- Compensation Programs

Bear Wise Wyoming

- These proactive efforts and educational component serve as the foundation for grizzly bear management and maintaining large carnivores on the landscape
 - A global pandemic required adaptation and improvisation



Bear Spray Giveaway in the Time of Covid




Teaming Up– 2020




Teaming Up - 2020







Safety for People; Safety for Bears

Grizzly Country,
ing
atters
ons
op Course







Future Plans and Activities



Conclusions and Future

- Game and Fish is committed to maintaining and managing grizzly bears on the landscape
 - Multi-layered approach to the ever-changing dynamics of large carnivores in Wyoming
- Maintaining a vigilant conflict resolution, monitoring and education program is vital to grizzly bear management and human tolerance
- We will continue to answer the questions that are being asked to better understand large carnivores resulting in more effective management strategies

Fin

