



United States Department of Agriculture

Montana Conflict Reduction Partnership:

Reducing conflicts between predators and livestock



John Steuber, Assistant Regional Director
USDA APHIS Wildlife Services, Western Region



USDA APHIS Wildlife Services

The mission of USDA APHIS Wildlife Services (WS) is to provide Federal leadership and expertise to resolve wildlife conflicts to allow people and wildlife to coexist.

Integrated Predator Damage Management:

1. Lethal
2. Non-lethal
3. Compensation



FY 2021 Grizzly Bear Damage Management

WS works under MOU with MFWP and under a Technical Assistance Letter for the Implementation of Grizzly Bear 4(d) Rule with USFWS.

WS investigates all reported livestock depredations in Montana.

WS consults with USFWS & MFWP (with Tribes when within Reservations) for authorization on actions to be taken on offending bears when livestock depredations are confirmed.



Grizzly Bear Killed Calf - Necropsy



Setting Boundaries – Tools for Physical Exclusion

- **Fences**
 - Turbo fladry
 - Electric fences
- **Range Riders and Herders**
 - Establish human presence
 - Manage livestock
- **Livestock Protection Dogs**

Livestock Protection Dogs



Livestock Protection Dogs: Research for Large Predators



Julie K. Young, Ph.D.

USDA-WS-NWRC-Predator Research Facility

Electric Fences Prevent Bear Conflicts



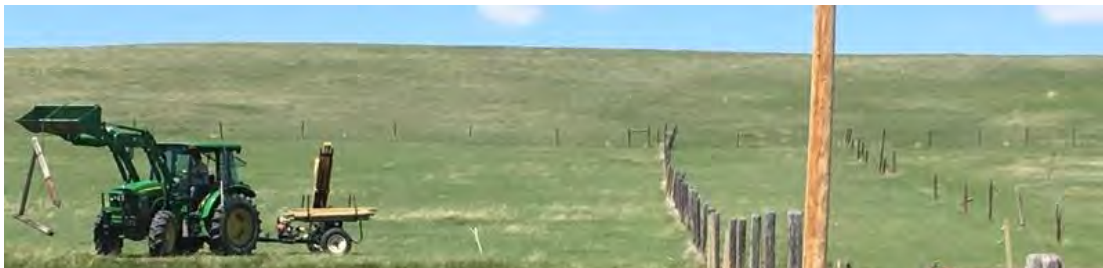


United States Department of Agriculture

Electric Fences Prevent Conflicts



Electric Fences Prevent Conflicts



Electric Fence & Turbo Fladry Projects 2018-2020

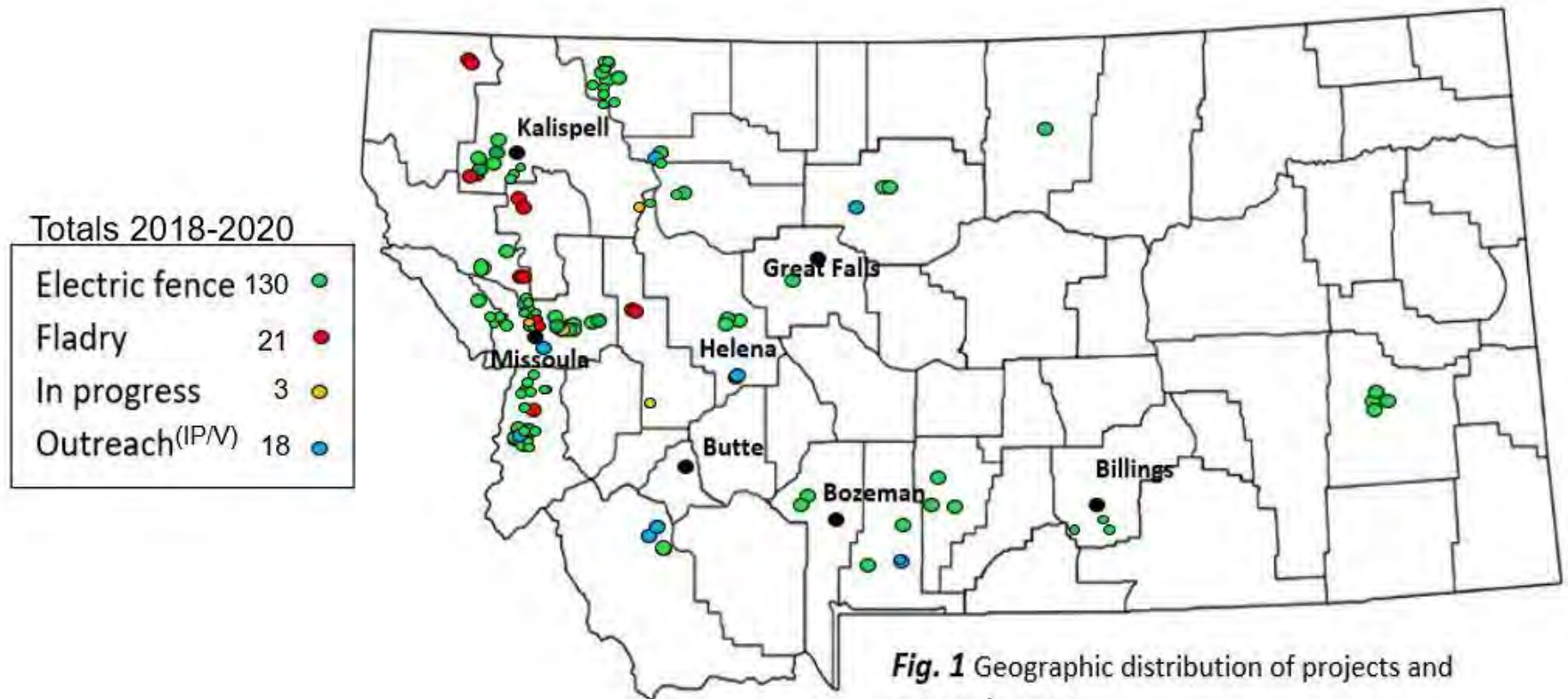
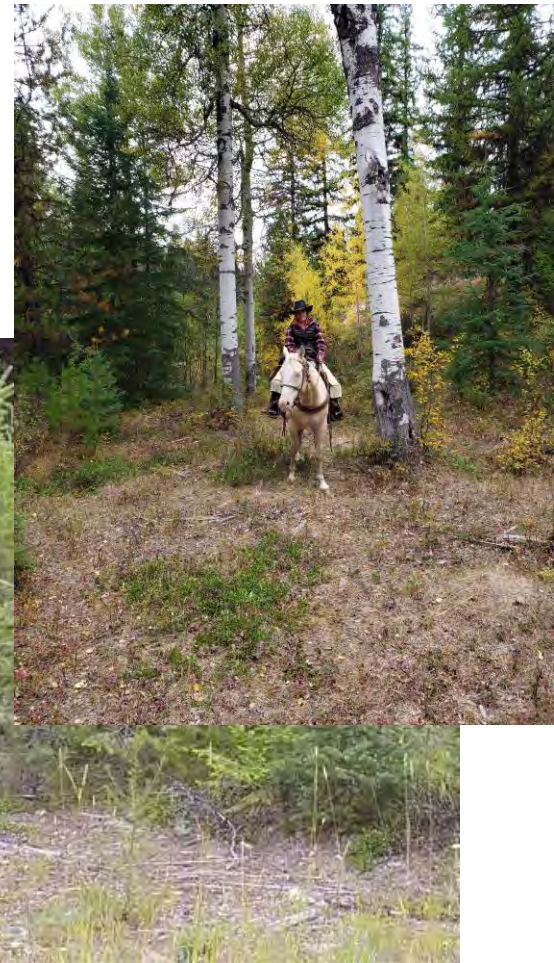


Fig. 1 Geographic distribution of projects and outreach events.



United States Department of Agriculture

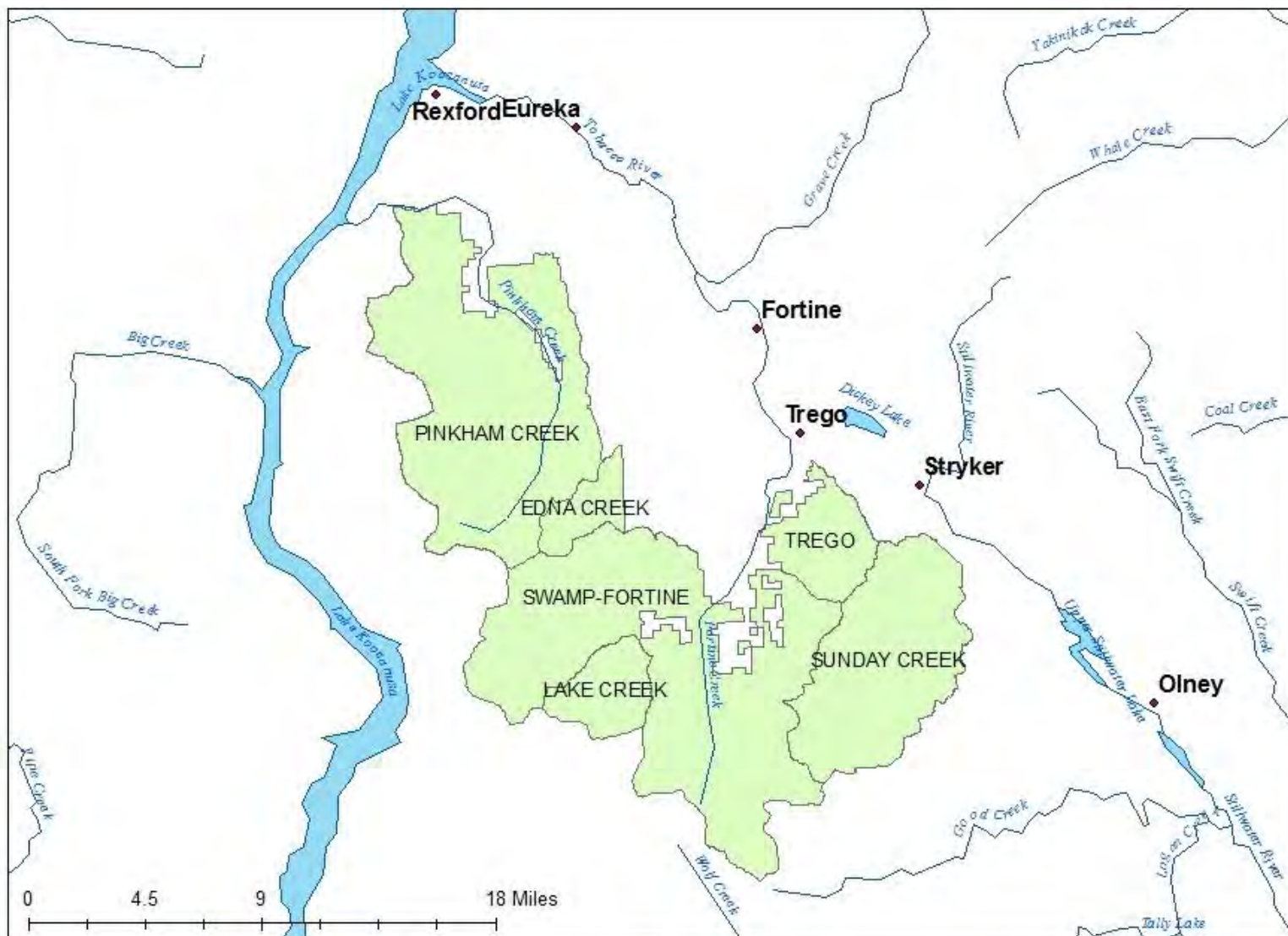
Trego Range Rider Project: 2018 -2021



50°F 08/28/2020 09:35AM PINKHAM



Trego Range Rider Project: 2018-2021





United States Department of Agriculture



Gravelly Mountains Range Rider 2020-2021





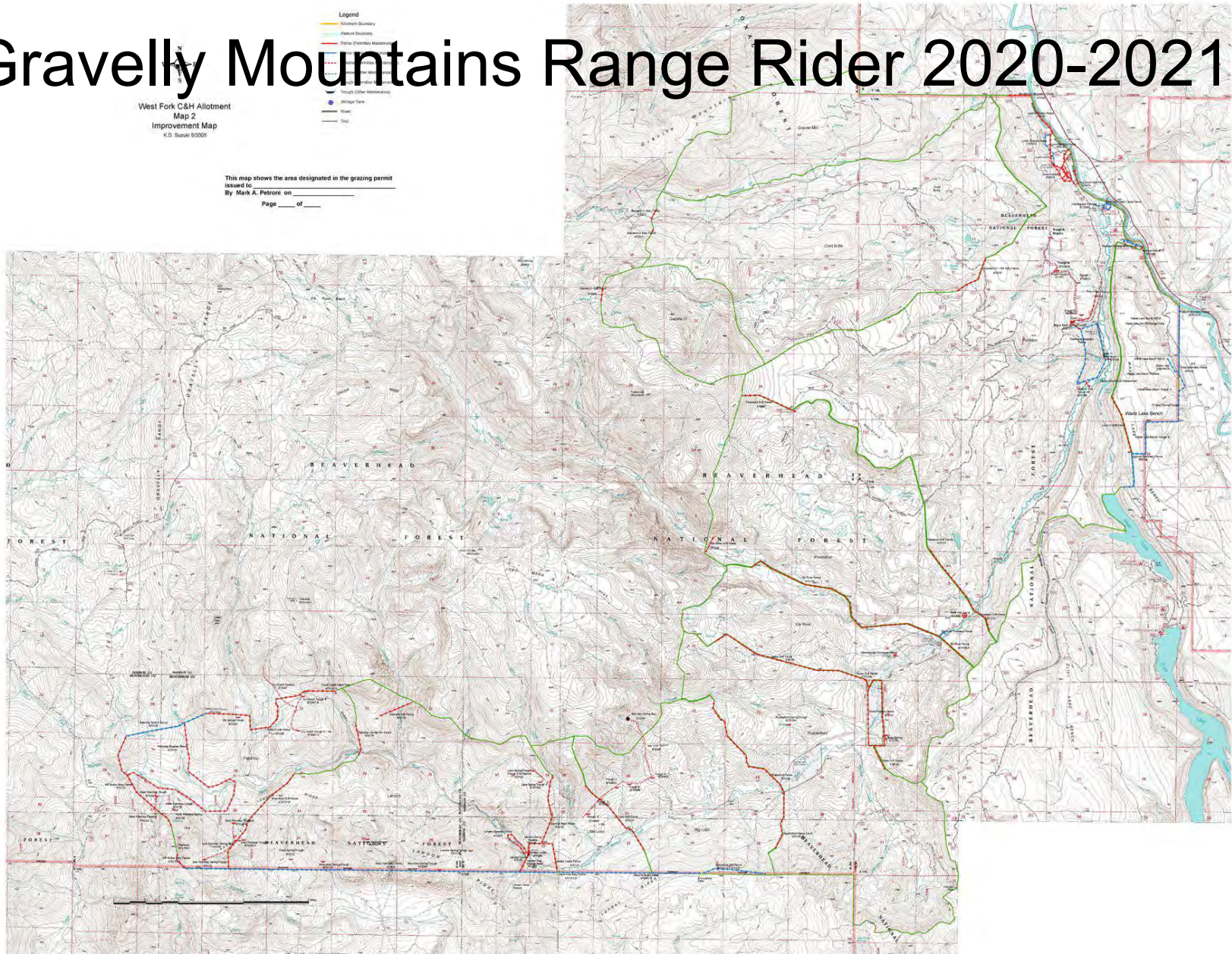
United States Department of Agriculture

Gravelly Mountains Range Rider 2020-2021

West Fork C&H Allotment
Map 2
Improvement Map
K.D. Scale 0/2000



This map shows the area designated in the grazing permit
issued to _____
By Mark A. Petron on _____
Page ____ of ____





United States Department of Agriculture

Education

LIVESTOCK-WILDLIFE CONFLICT PREVENTION WORKSHOP



Photo: Jack McRae

Wednesday, January 17, 2018
5:30 pm - 9 pm

Red Lodge, Montana
Carbon County Fairgrounds
94 Rodeo Road

Sponsored By:



Protecting People | Protecting Agriculture | Protecting Wildlife





United States Department of Agriculture

Partnerships Build Protection



Major Collaborators (16)

Natural Resource Defense Council

Defenders of Wildlife

Greater Yellowstone Coalition

Montana Livestock Loss Board

US Fish & Wildlife Service

Montana Fish, Wildlife & Parks

Blackfeet Nation Stock Growers

Blackfeet Fish & Wildlife Dept.

Blackfeet ARMP

CSKT Fish & Wildlife Dept.

Blackfoot Challenge

Vital Ground

US Forest Service, Kootenai & Beaverhead-Deer Lodge National Forests

Western Landowners Alliance

Sierra Club