

A bear walks through it: 20 years of habitat conservation in northwest Montana



Photo Credit: @kestrelaerial.com



Kris Tempel

Habitat Conservation Biologist

Montana Fish, Wildlife & Parks - Region One

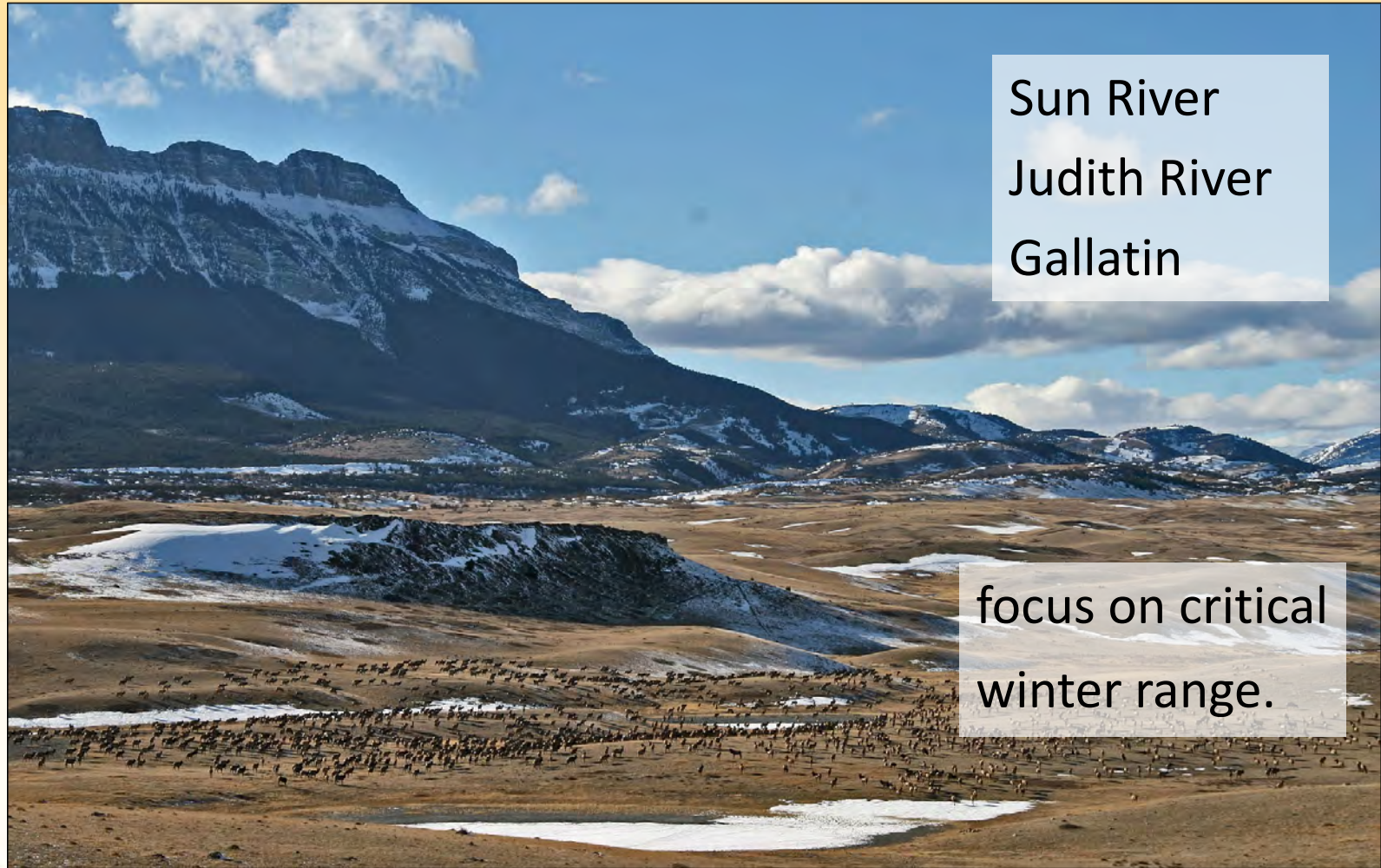


First state park 1935

Lewis and Clark Caverns



First habitat conservation 1940



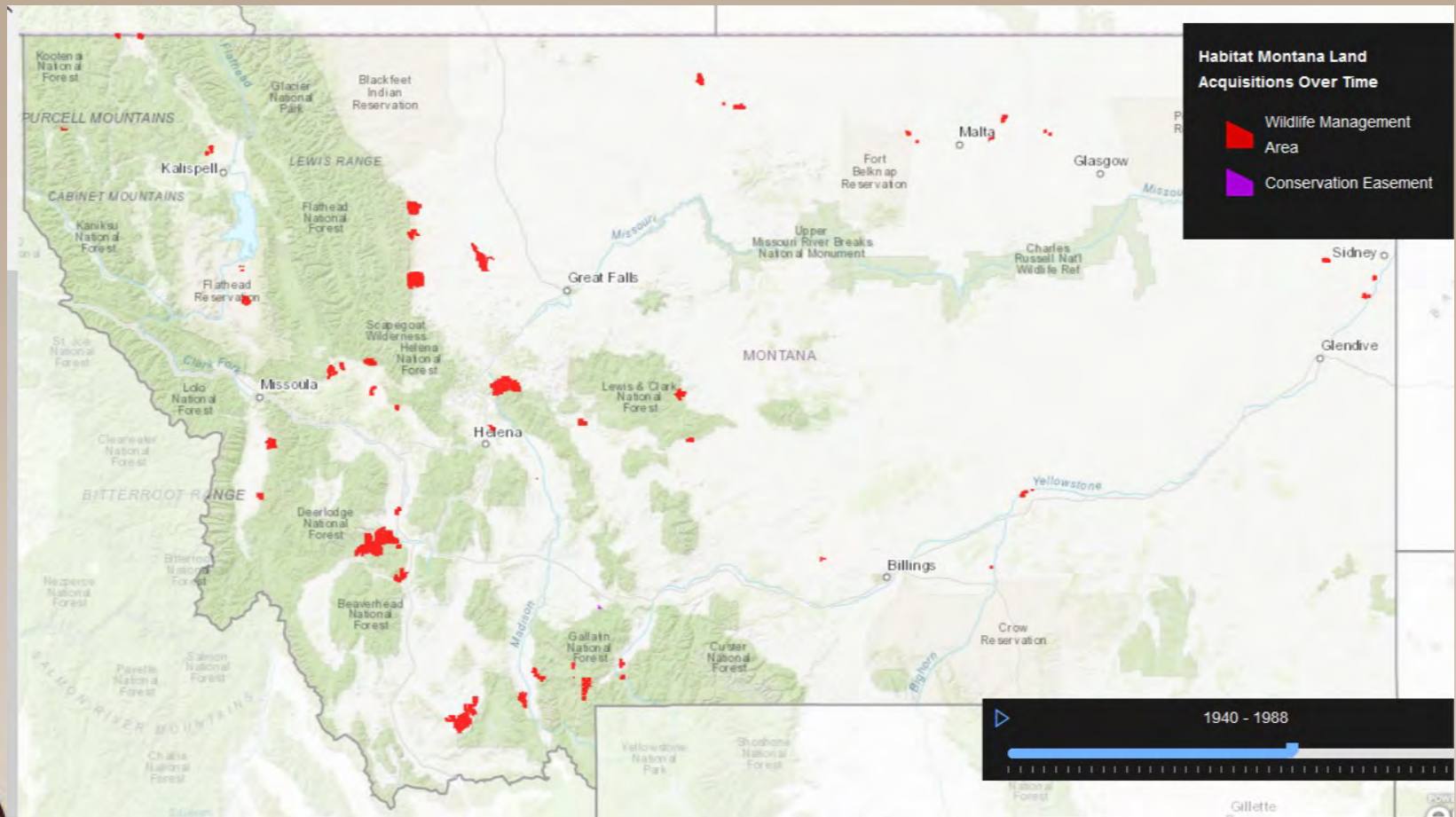
Sun River
Judith River
Gallatin

focus on critical
winter range.



Continued through 1987

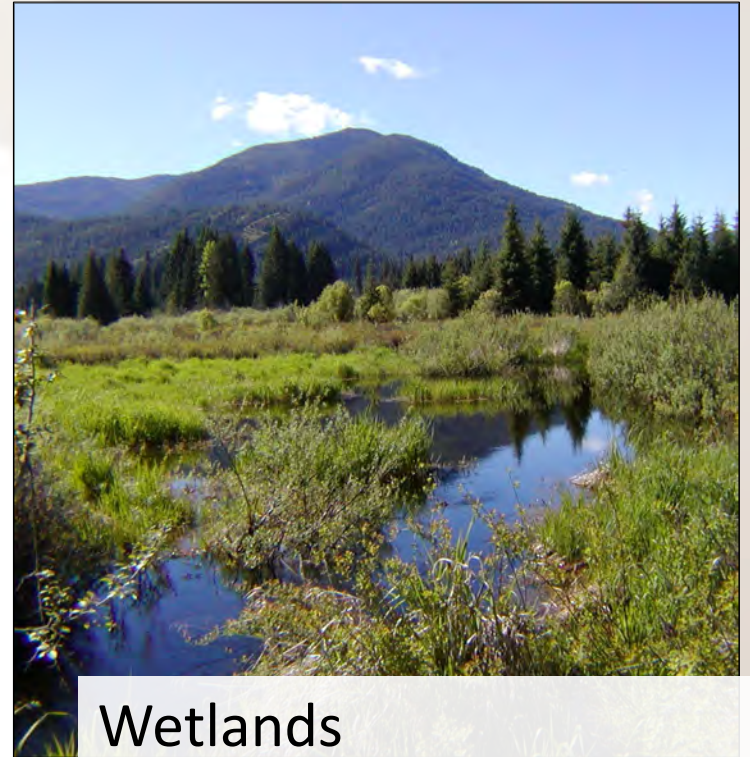
Primarily federal funding & state license dollars



1987 House Bill 526, Habitat MT

Conserve Montana's wildlife resources for current and future generations

- Consistent funding
- Hunter license dollars
- 92% from nonresident
- \$5-6 million per year
- \$750,000 maintenance
- Priority habitats
- **Prioritize conservation easements**



Wetlands

Intermountain Grasslands
Shrub grasslands



Conservation Easements

What is a conservation easement?

- A voluntary legal agreement between a landowner and a land trust or government agency that limits certain uses of the land in order to protect its specific conservation values

Objective of FWP-held conservation easements?

- Protect vital fish and wildlife habitat
- Retain working lands for forestry and agriculture
- Maintain open space and managed public recreational access





FWP Regions



Federal programs through FWP

Forest Legacy Program

Goals and Objectives:

Identify and protect environmentally important forest lands that are threatened by conversion to non-forest uses



Cooperative Endangered Species Conservation Fund

Program Goals and Objectives:

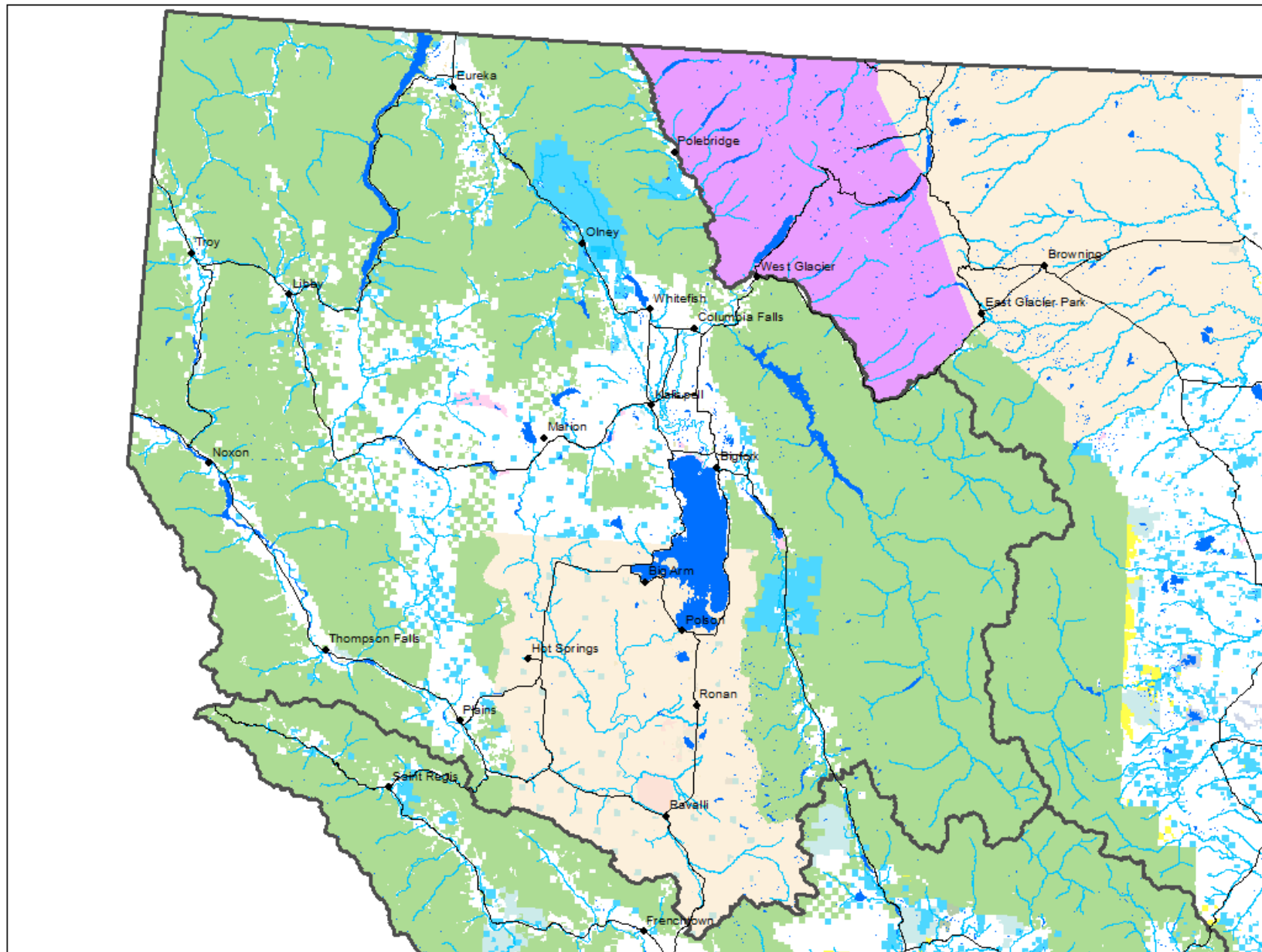
Support the recovery of federally-listed threatened or endangered species



Where we started...

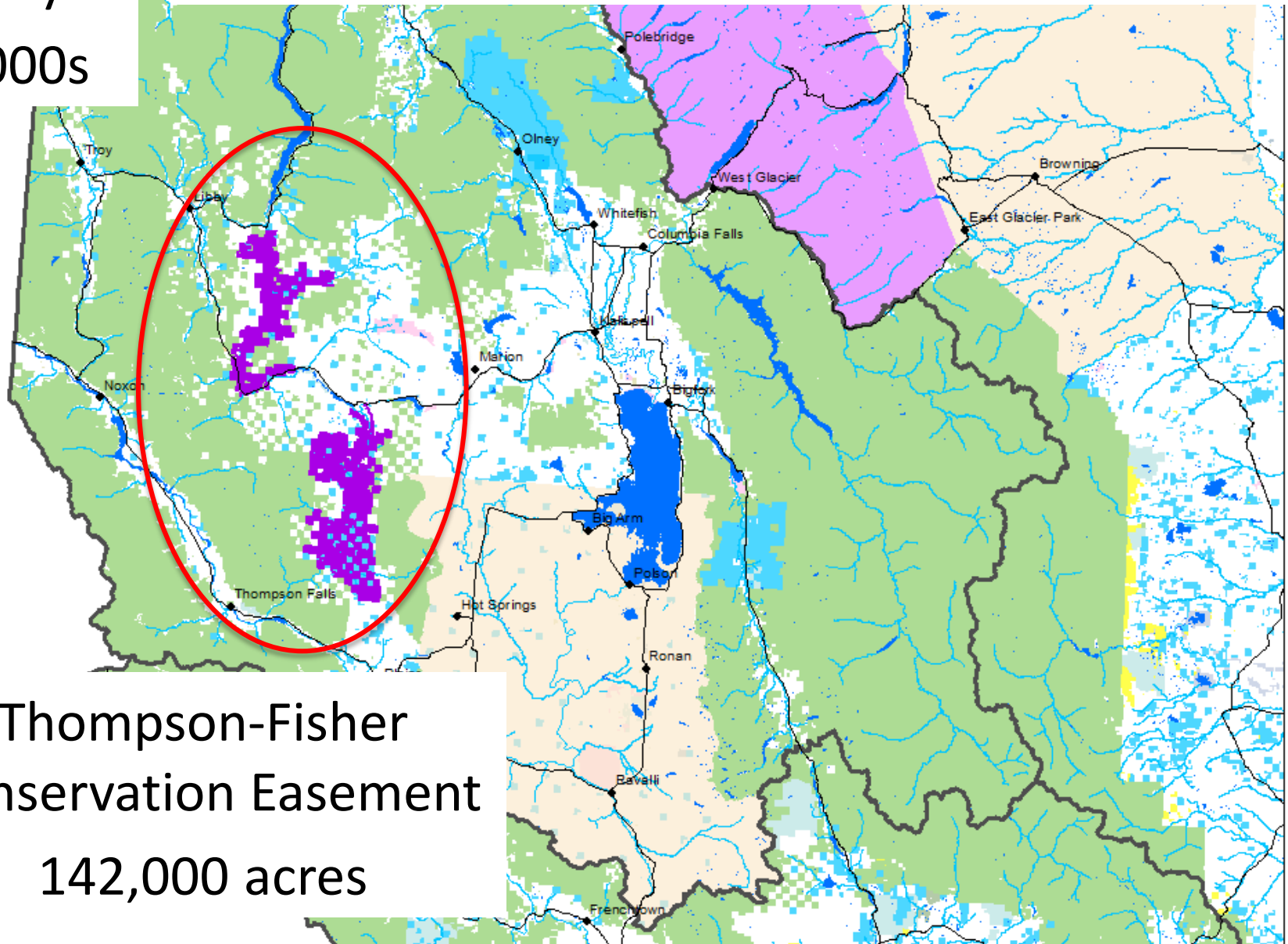


1990s



First Forest Legacy Program Project

Early
2000s

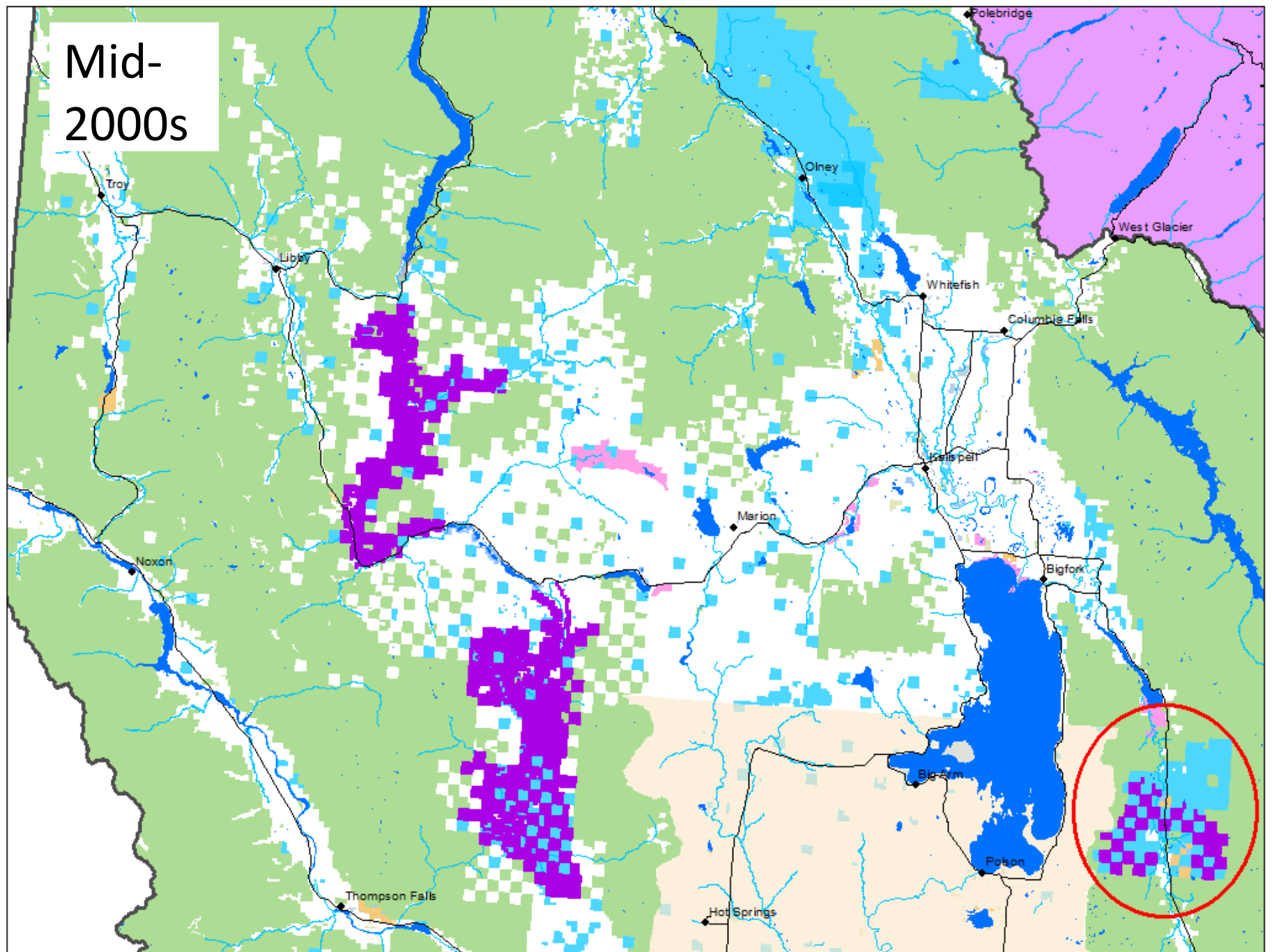


Thompson-Fisher
Conservation Easement
142,000 acres



Low Elevation Winter Ranges

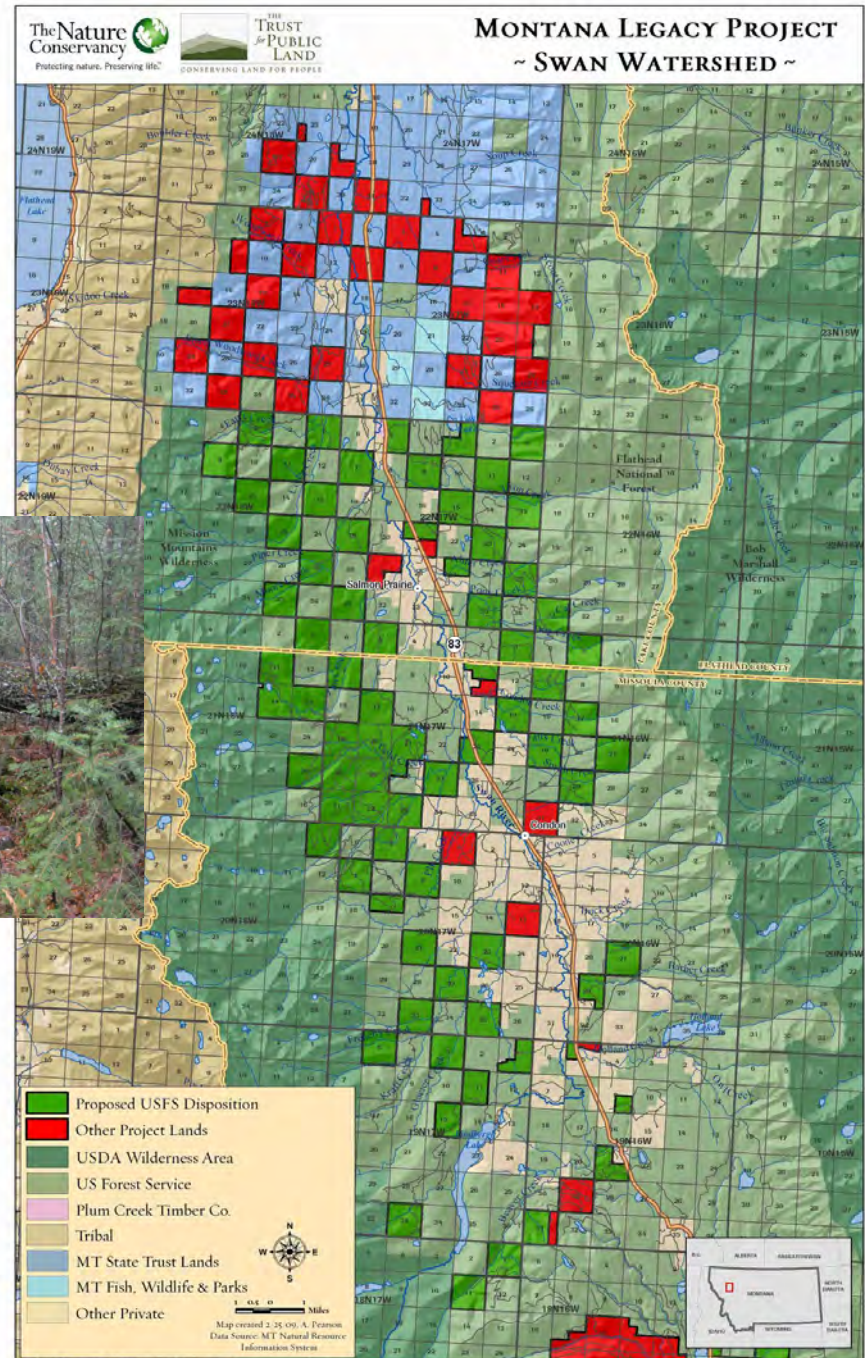
Mid-
2000s



Swan Valley Project

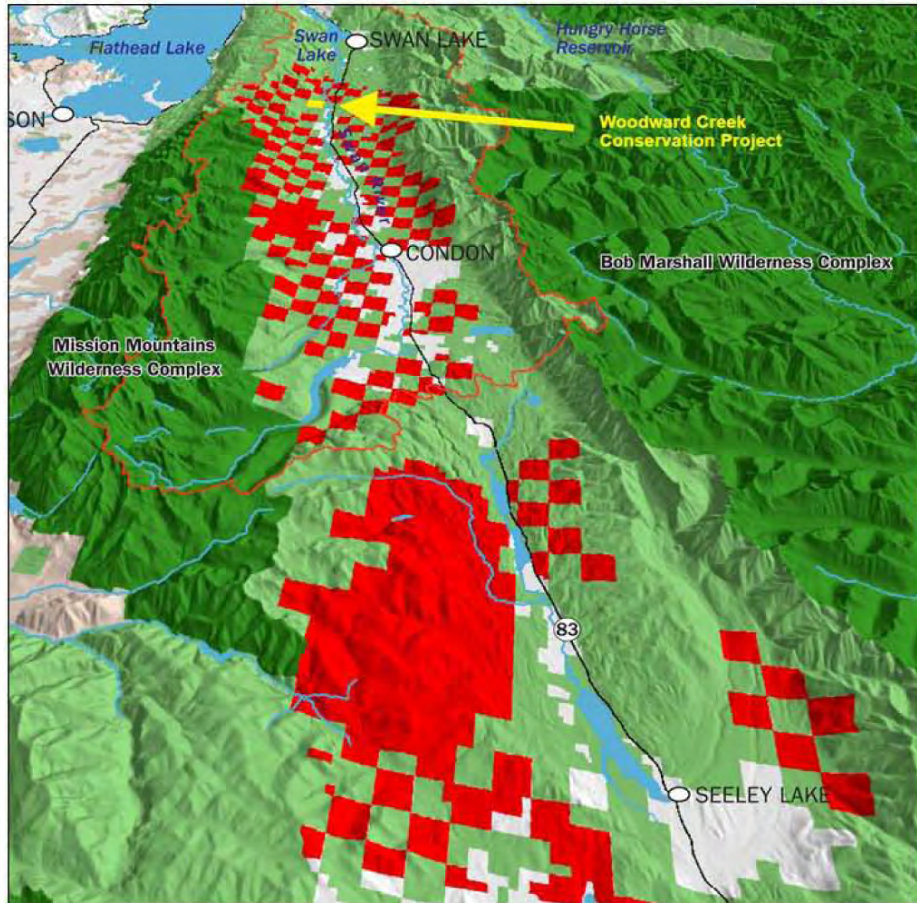
9,300 acres CE

600 acres Fee

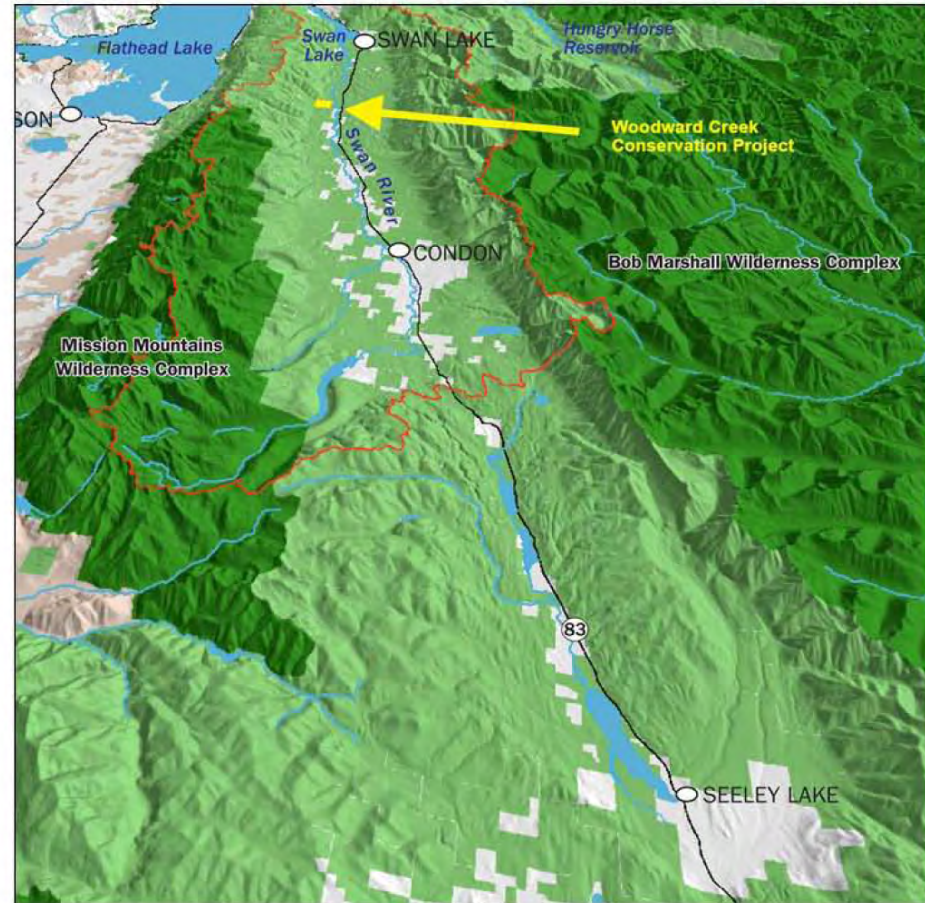


Part of the 320,000 acre MT Legacy Project

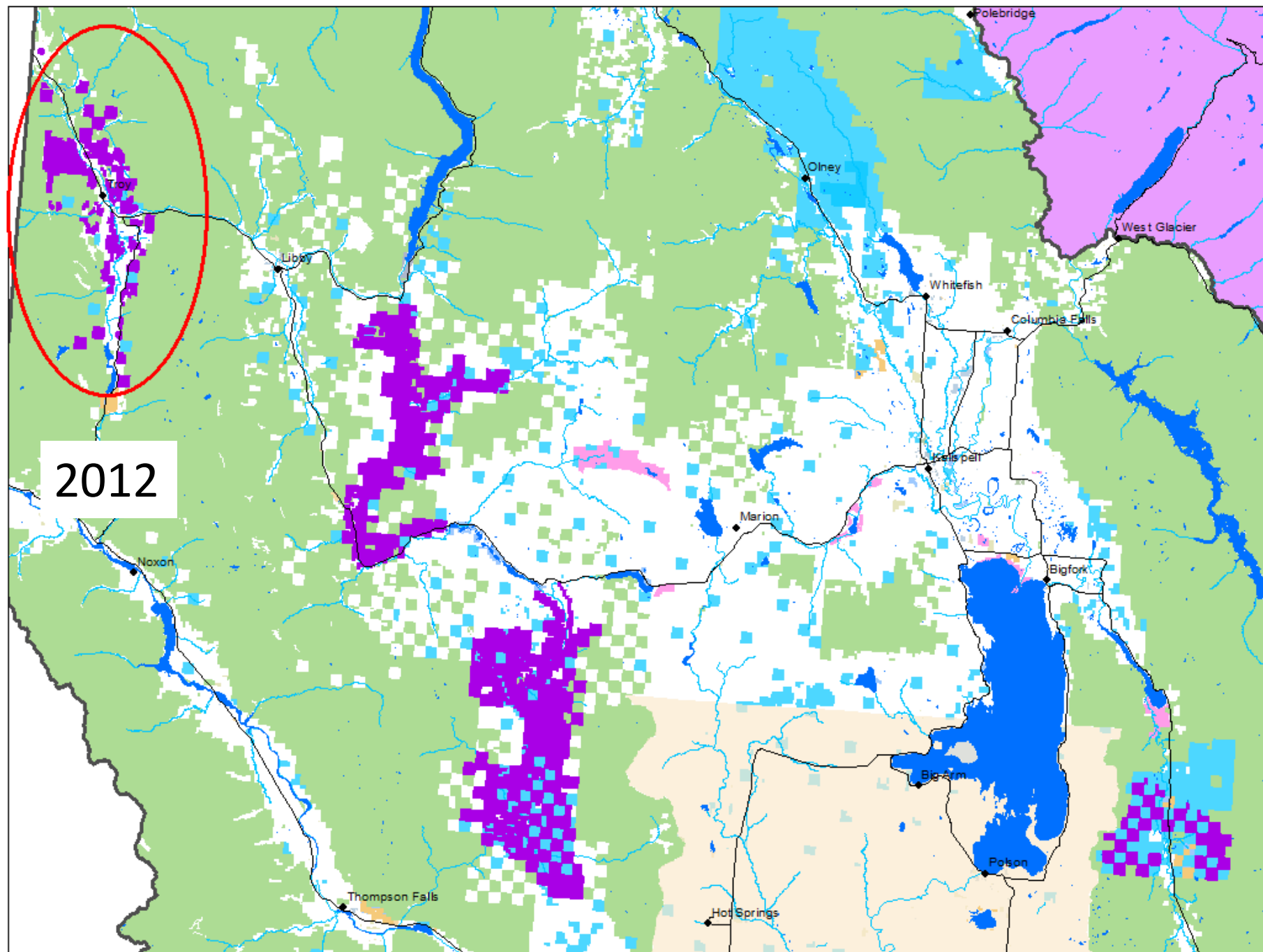
Pre-2007 before MLP



Post-2010 after MLP



Plum Creek Timber Company

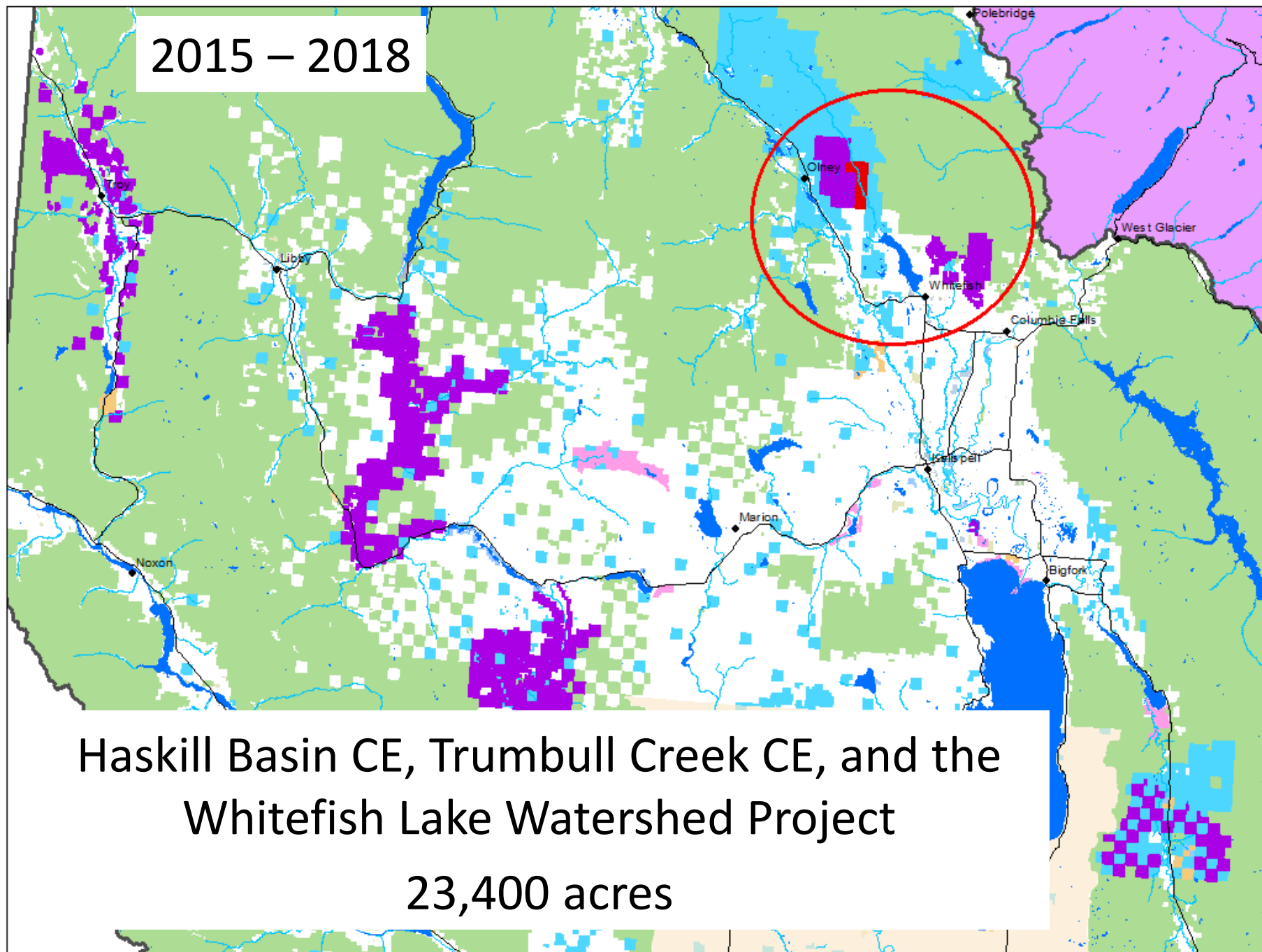


Kootenai Valleys Conservation Easement

28,000 acres



2015 – 2018



Haskill Basin CE, Trumbull Creek CE, and the
Whitefish Lake Watershed Project

23,400 acres

Water, Economy, Wildlife, Recreation

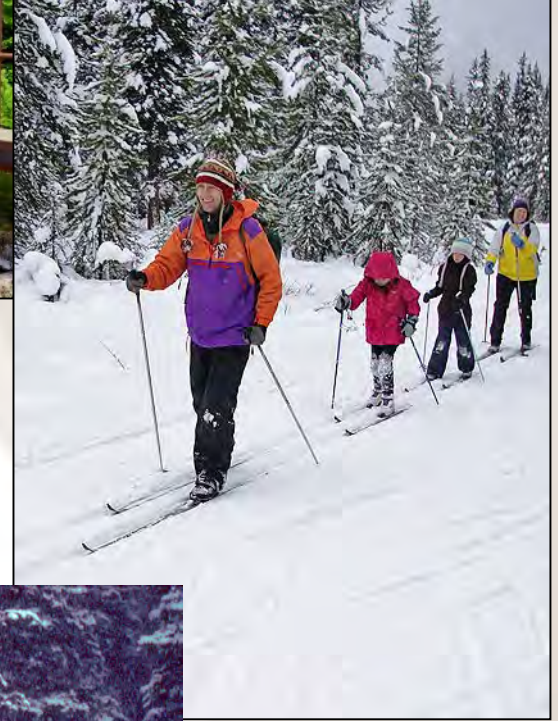


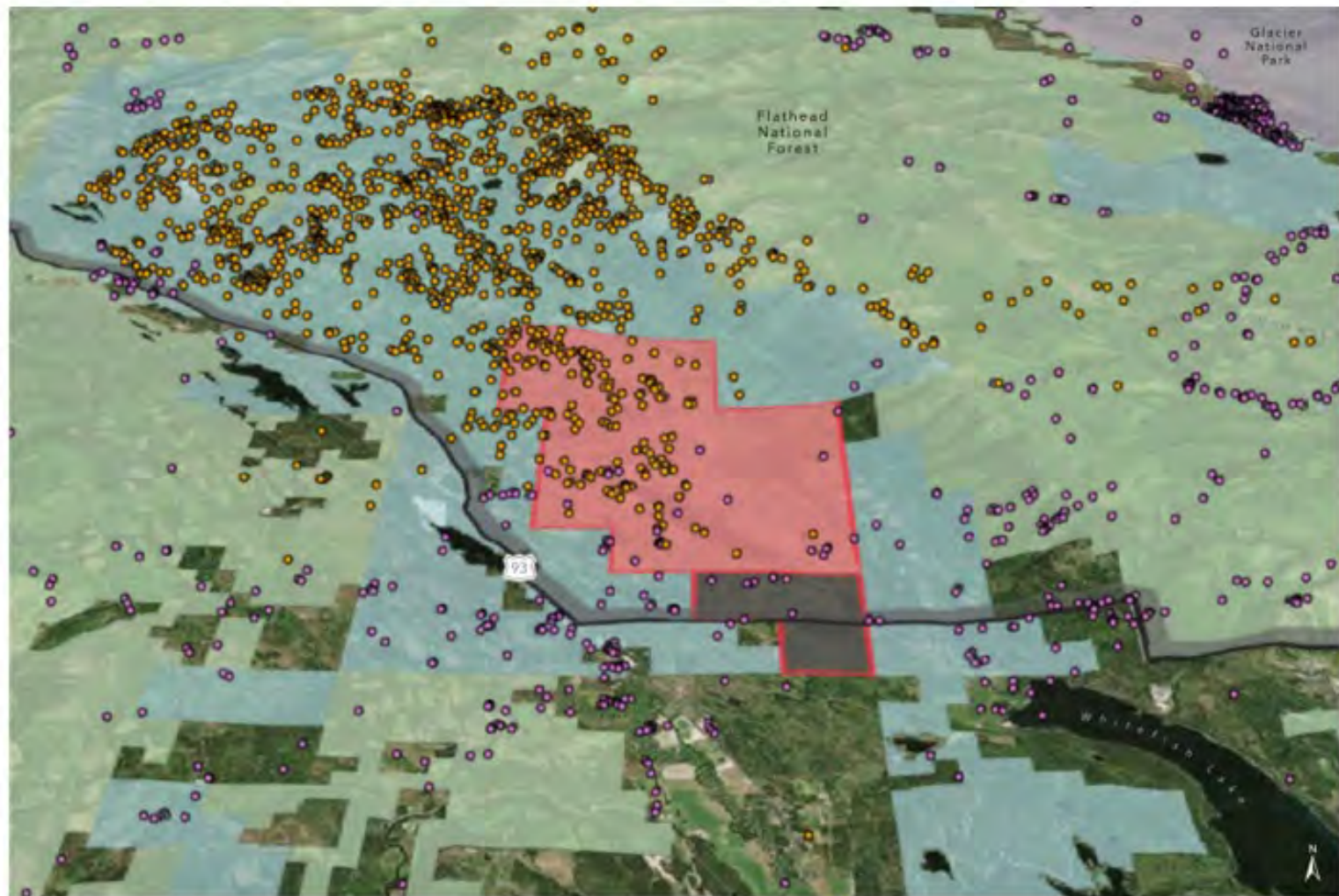


Photo Credit: @kestrelaerial.com



Photo Credit: Rick Northrup, FWP





Whitefish Lake Watershed Project

GRIZZLY BEAR TELEMTRY LOCATIONS

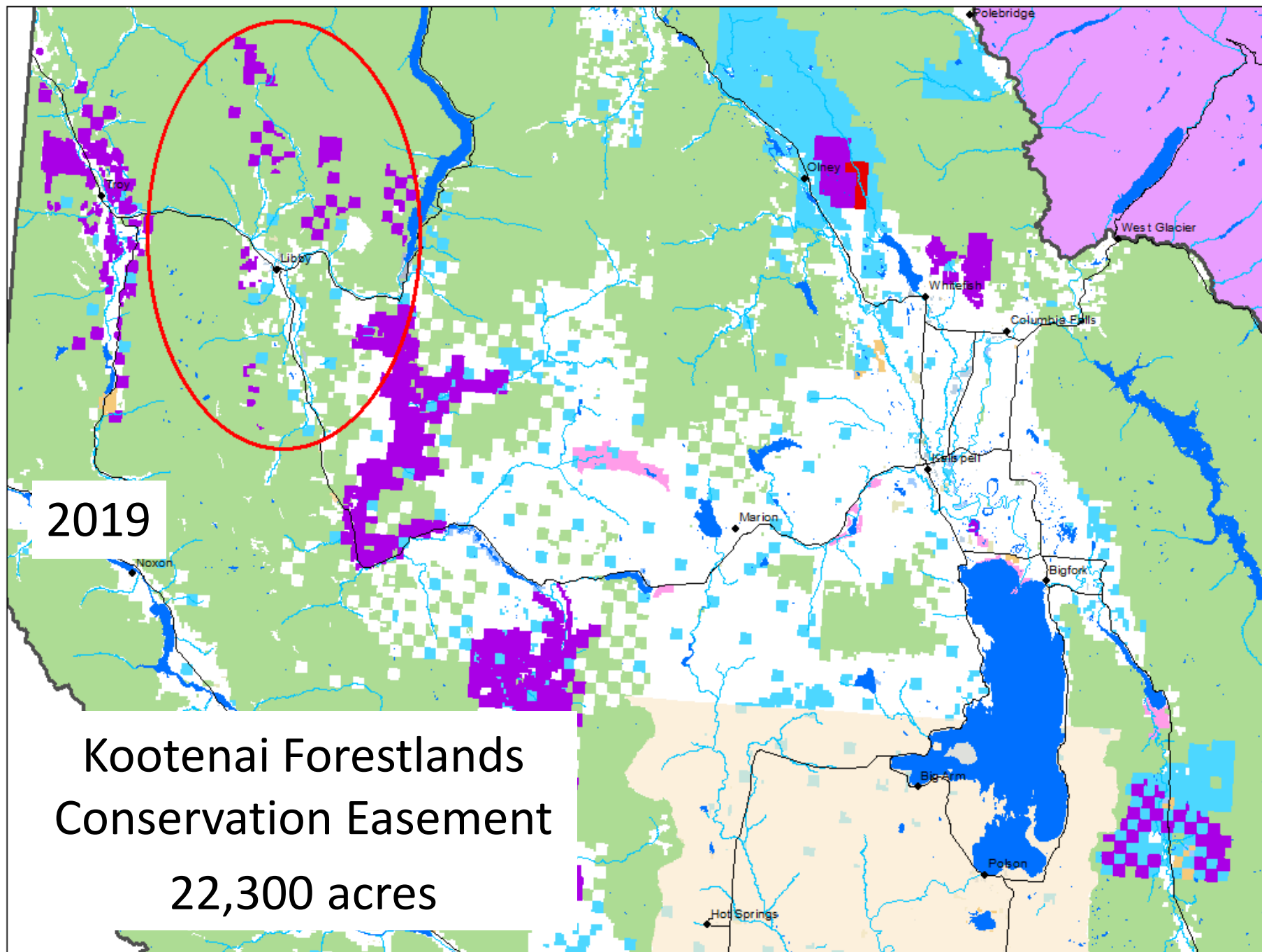
March 5, 2016. Copyright © The Trust for Public Land. The Trust for Public Land and The Trust for Public Land logo are federally registered trademarks of The Trust for Public Land. Information on this map is printed for purposes of discussion and education only.

Whitefish Lake Watershed Project
 HCFLAP Conservation
 Easement Tract
 Fee Tract (match)
 Grizzly Bear Recovery Zone
 State land
 National Park land
 Other Federal land

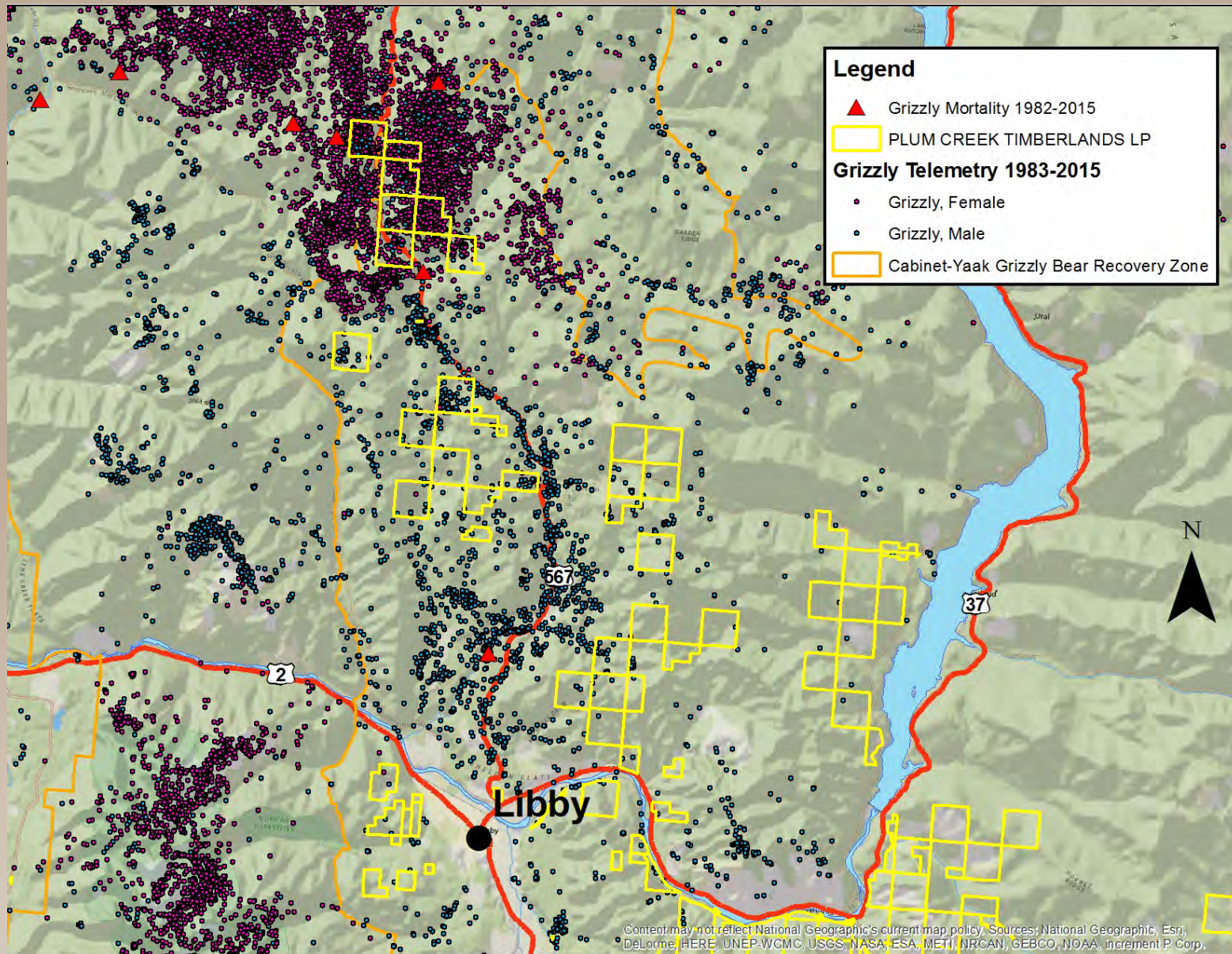
Grizzly Bear Telemetry
 Locations*
 Male
 Female

*Grizzly bear telemetry locations showing range with movement of eleven radio-collared bears that follow the Whitefish Lake Watershed project lands as an integral part of their annual home range.









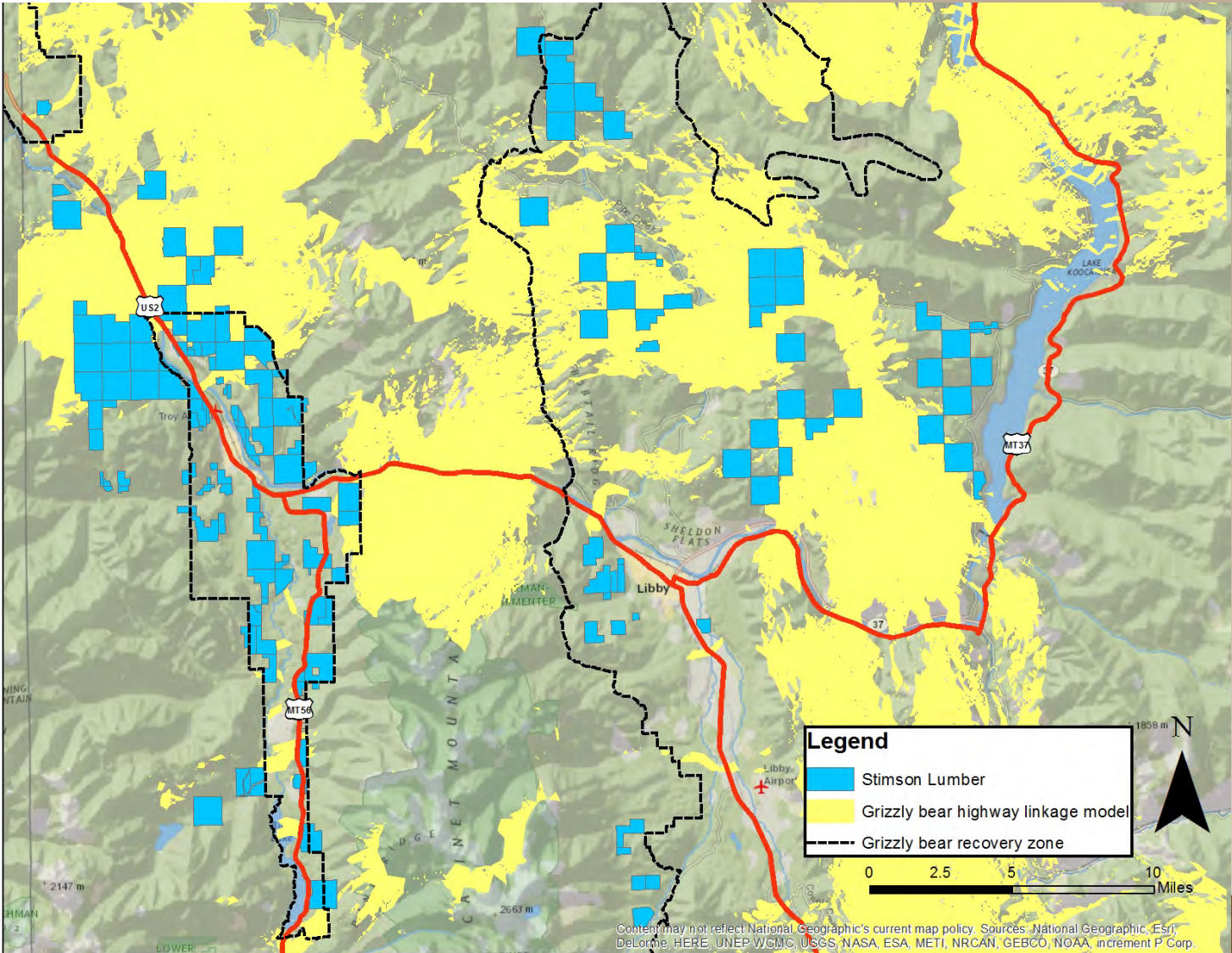


Research Article

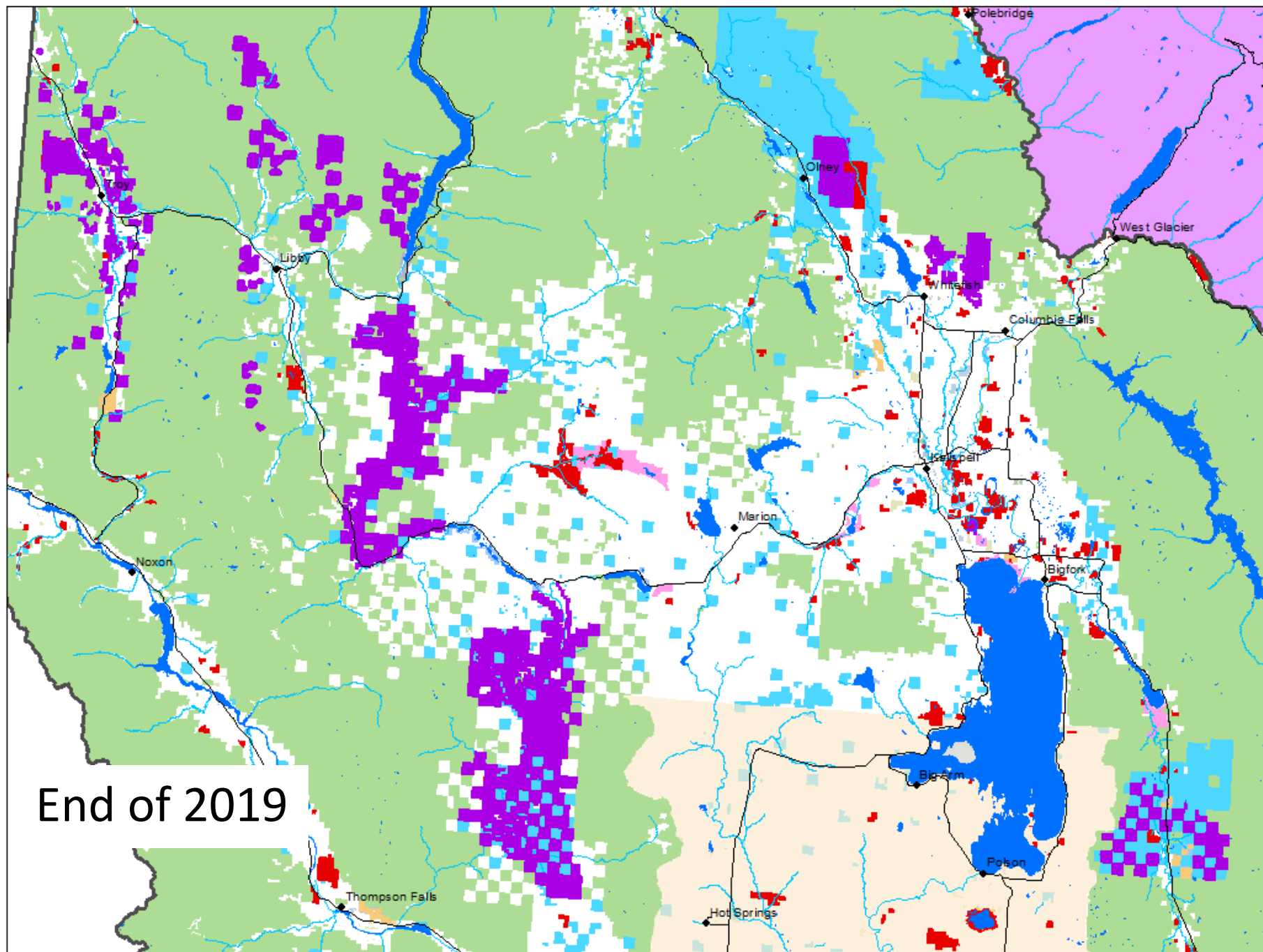
Grizzly Bear Connectivity Mapping in the Canada–United States Trans-Border Region

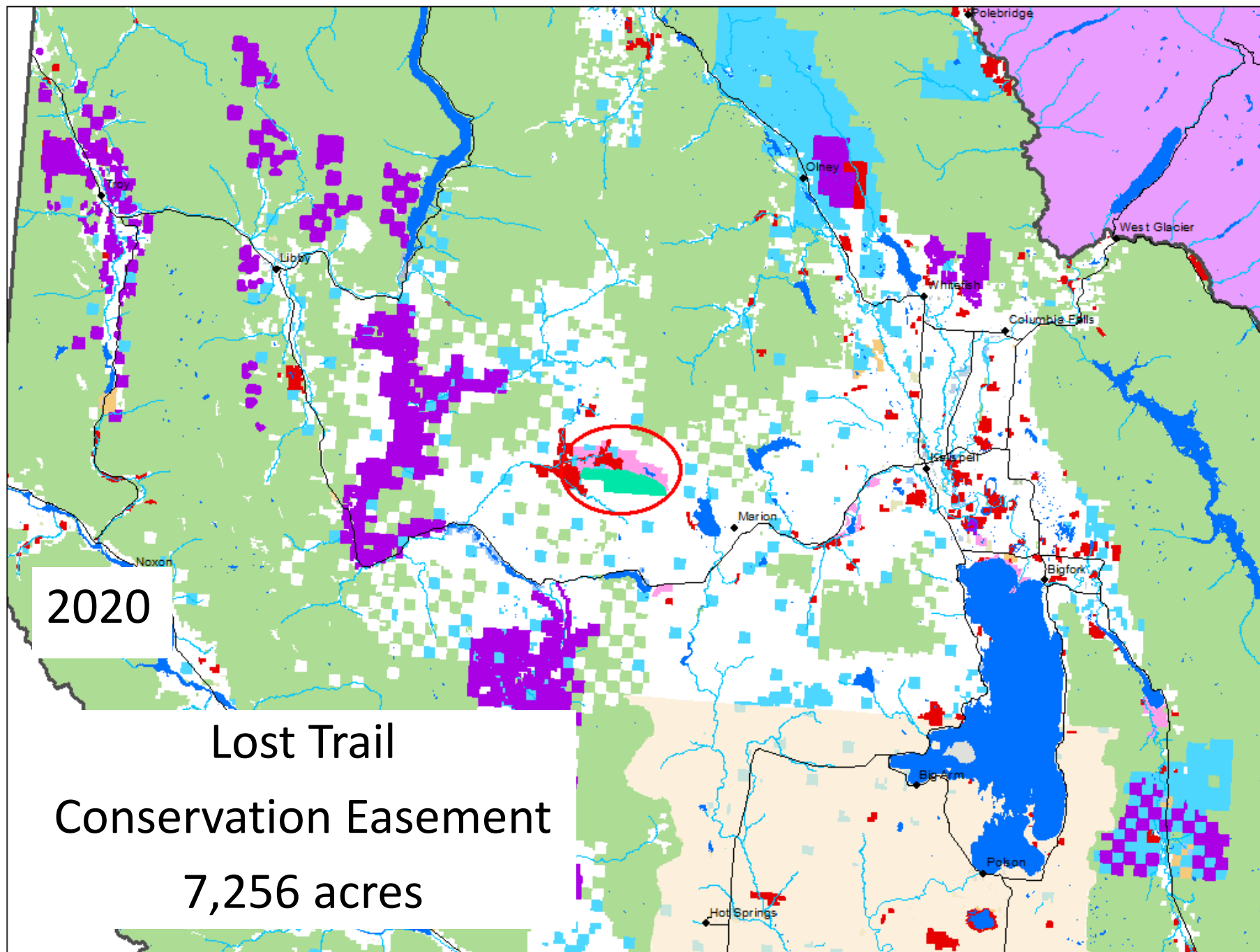
MICHAEL F. PROCTOR,¹ *Birchdale 1*
SCOTT E. NIELSEN, *Department of R*
WAYNE F. KASWORM, *US Fish and Wila*
CHRIS SERVHEEN, *US Fish and Wila*
MT 59812, USA
THOMAS G. RADANDT, *US Fish an*
A. GRANT MACHUTCHON, *817 Mi*
MARK S. BOYCE, *Department of Biolog*

ABSTRACT Fragmentation is its impacts on species' population and focal species for large mammals the trans-border region of so

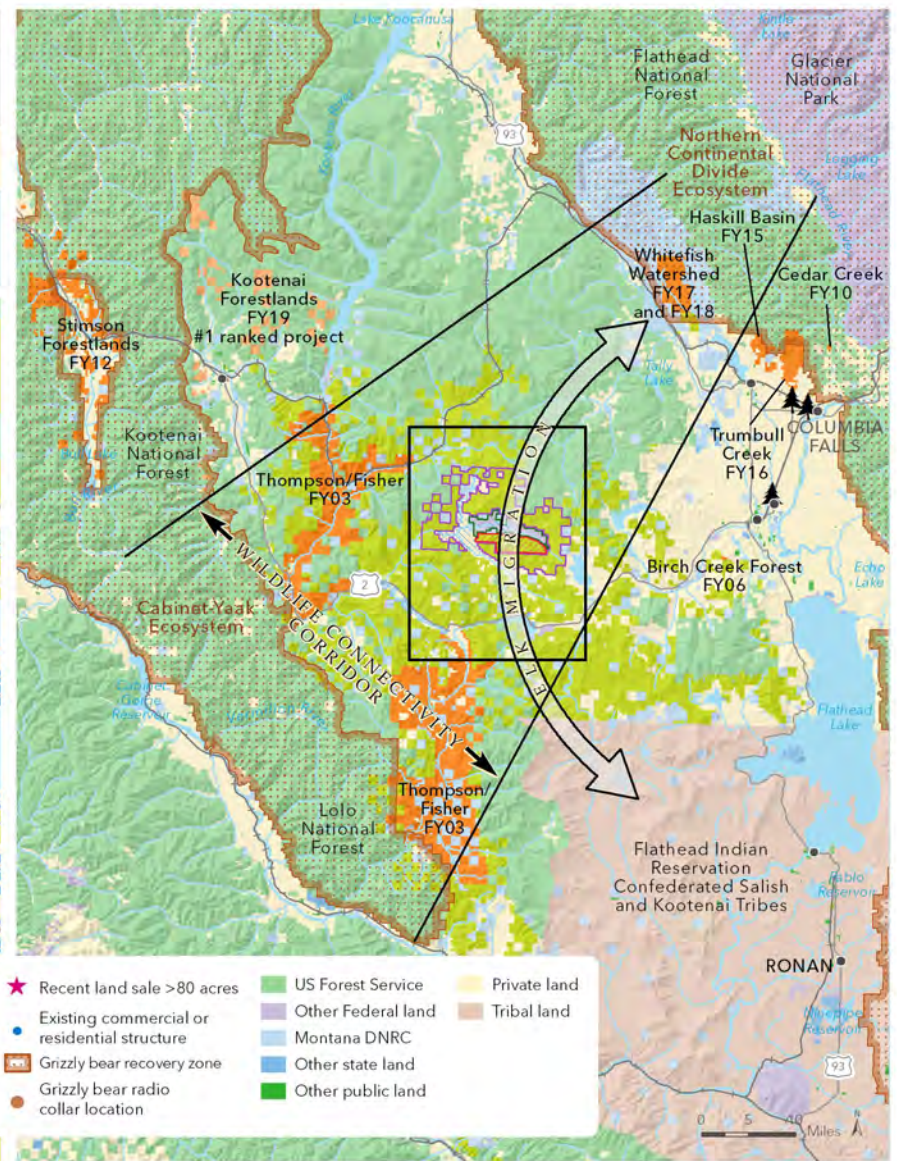
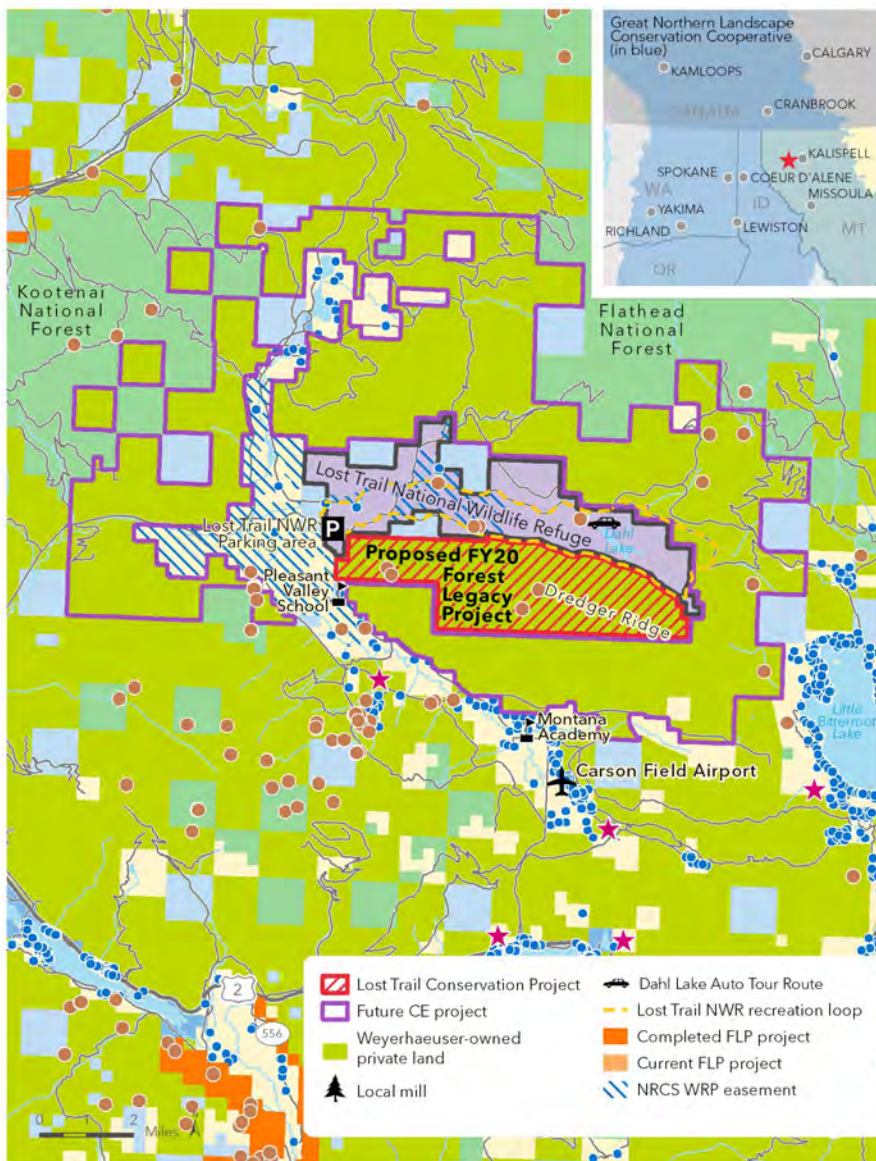


Content may not reflect National Geographic's current map policy. Sources: National Geographic, Esri, DeLorme, HERE, UNEP-WCMC, USGS, NASA, ESA, METI, NRCAN, GEBCO, NOAA, increment P Corp.





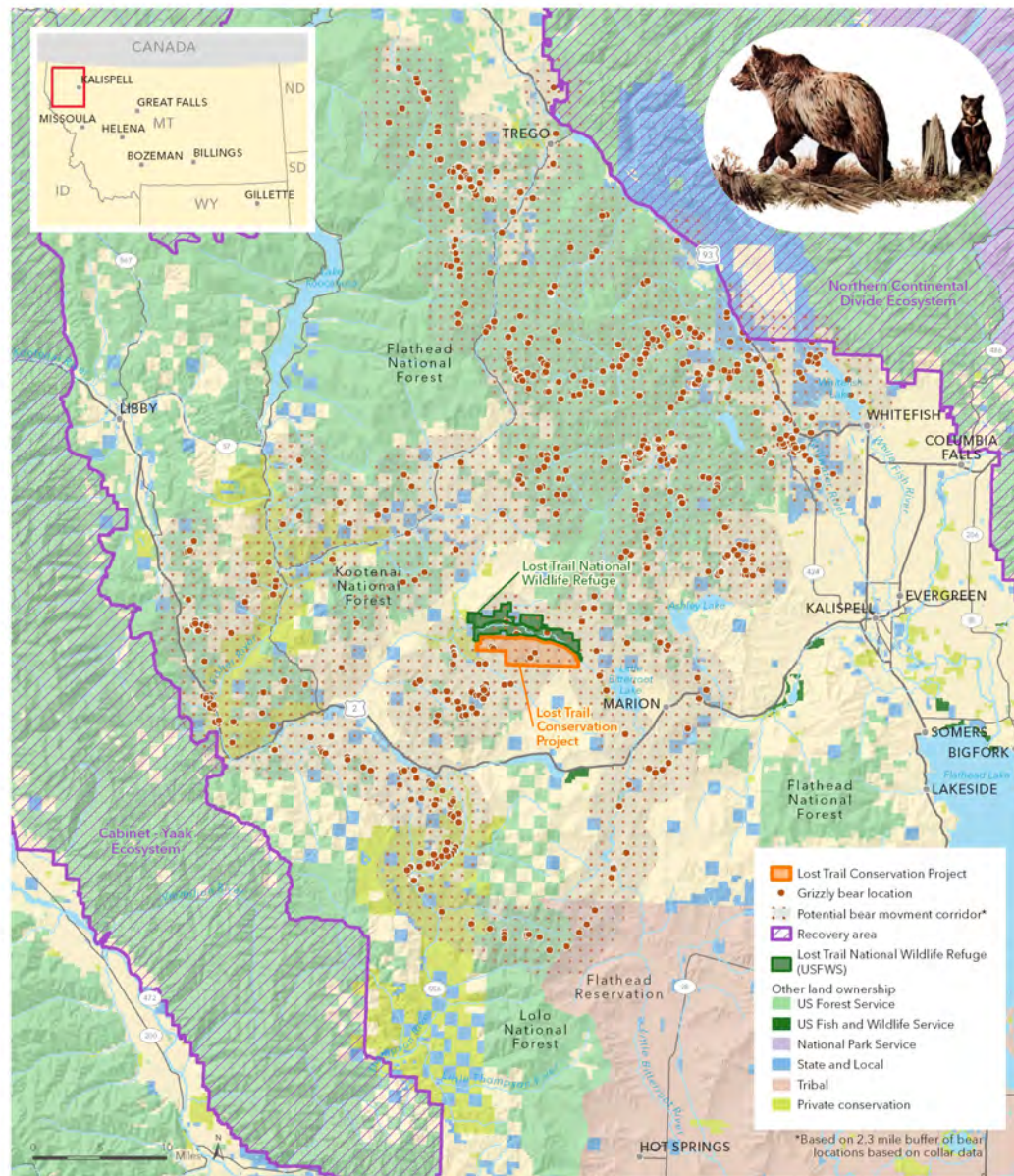




Lost Trail Conservation Project

FY20 FOREST LEGACY PROPOSAL

November 19, 2018. Copyright © The Trust for Public Land. The Trust for Public Land and The Trust for Public Land logo are federally registered marks of The Trust for Public Land. Information on this map is provided for purposes of discussion and visualization only www.tpl.org



Lost Trail Conservation Project

FLATHEAD COUNTY, MONTANA

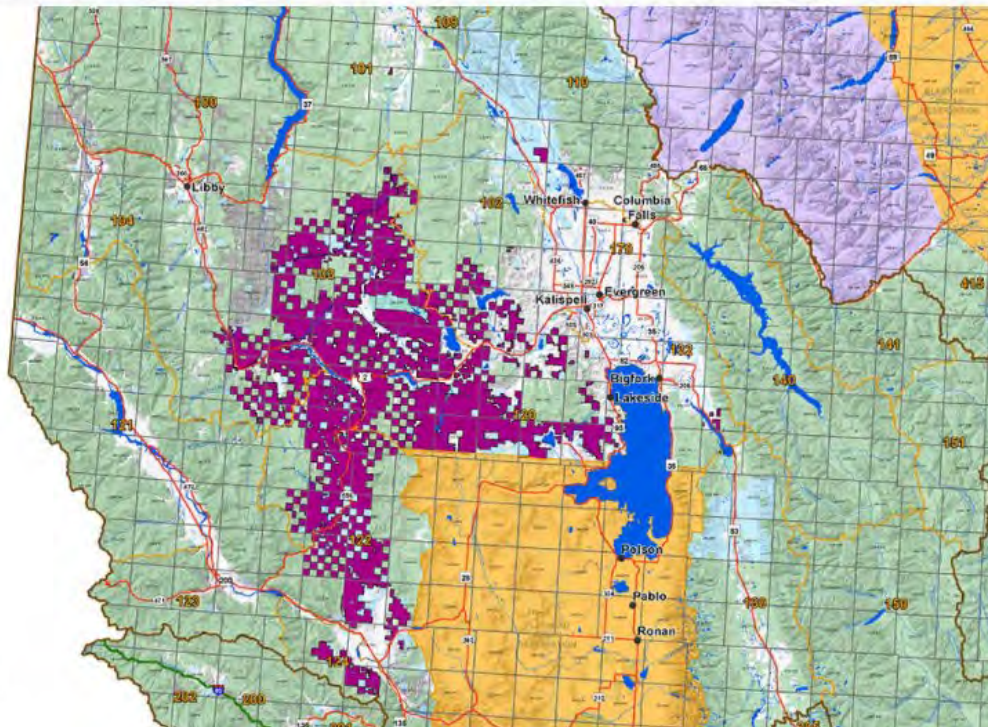
July 3, 2018. Copyright © The Trust for Public Land. The Trust for Public Land and The Trust for Public Land logo are federally registered marks of The Trust for Public Land. Information on this map is provided for purposes of discussion and visualization only. www.tpl.org



Weyerhaeuser announces Montana land sale finalized



- Weyerhaeuser Company
- FWP Region
- Deer/Elk Hunting District & Boundary
- BLM
- National Park Service
- Other Federal Lands
- US Fish and Wildlife Service
- US Forest Service
- MT Fish, Wildlife & Parks
- State Trust Lands
- Other State Lands
- Other Timber Lands
- Indian Reservation



Winter 2019-
Spring 2020:

**New large
landowner in
northwest
Montana**

**~630,000
acres of
timberland
purchased**





HOME

ABOUT

HISTORY

LAND FOR SALE

WE BUY LAND

CONTACT

SEARCH

LAND PARTNERS YOU CAN TRUST



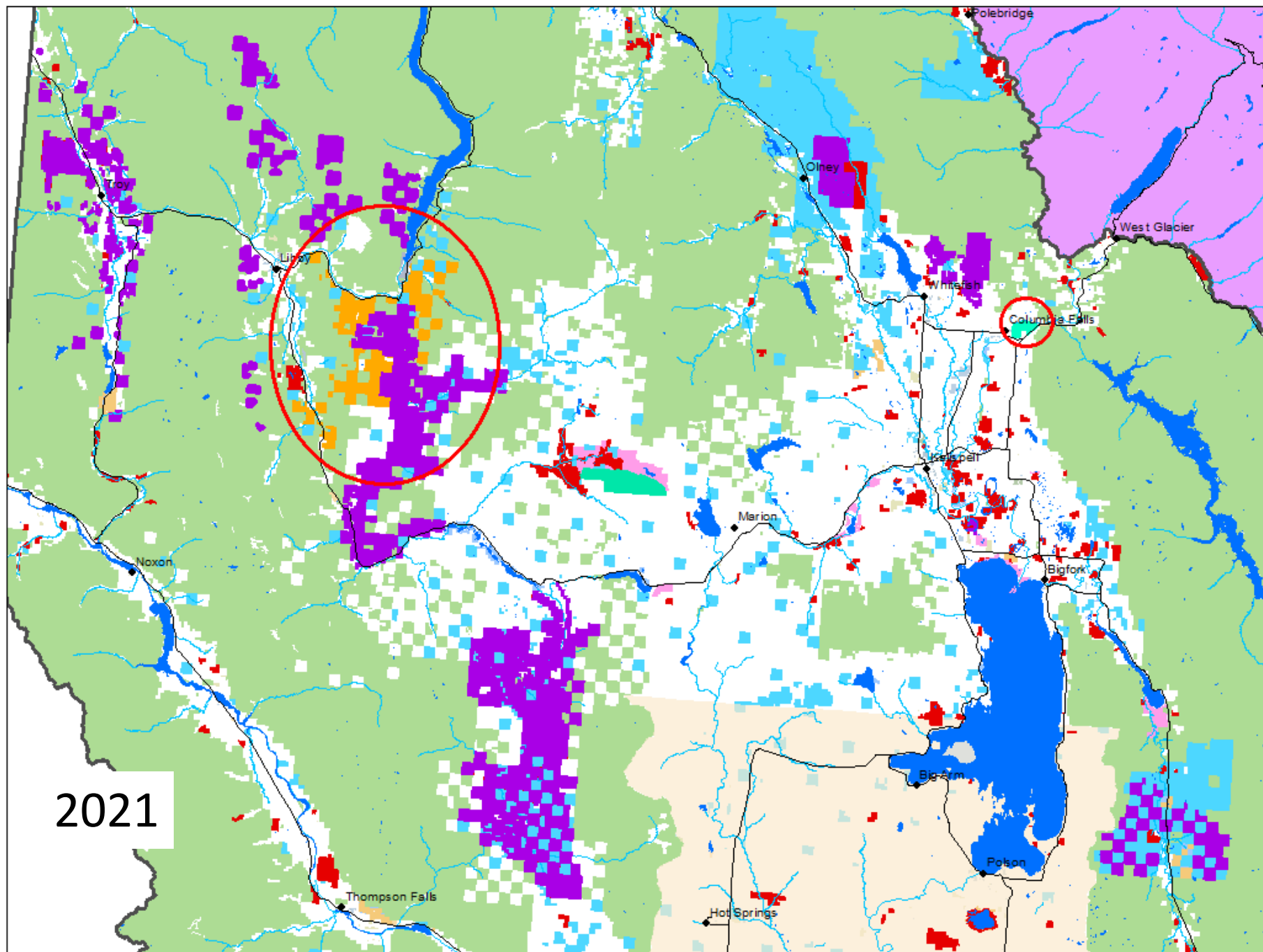
As of the end of 2020 ...

Just over **230,000 acres** of
public recreation access and
valuable fish and wildlife habitat
permanently secured



The future ...





Kootenai Forestlands Phase II Conservation Easement

27,289 acres





Photo Credit: @kestrelaerial.com





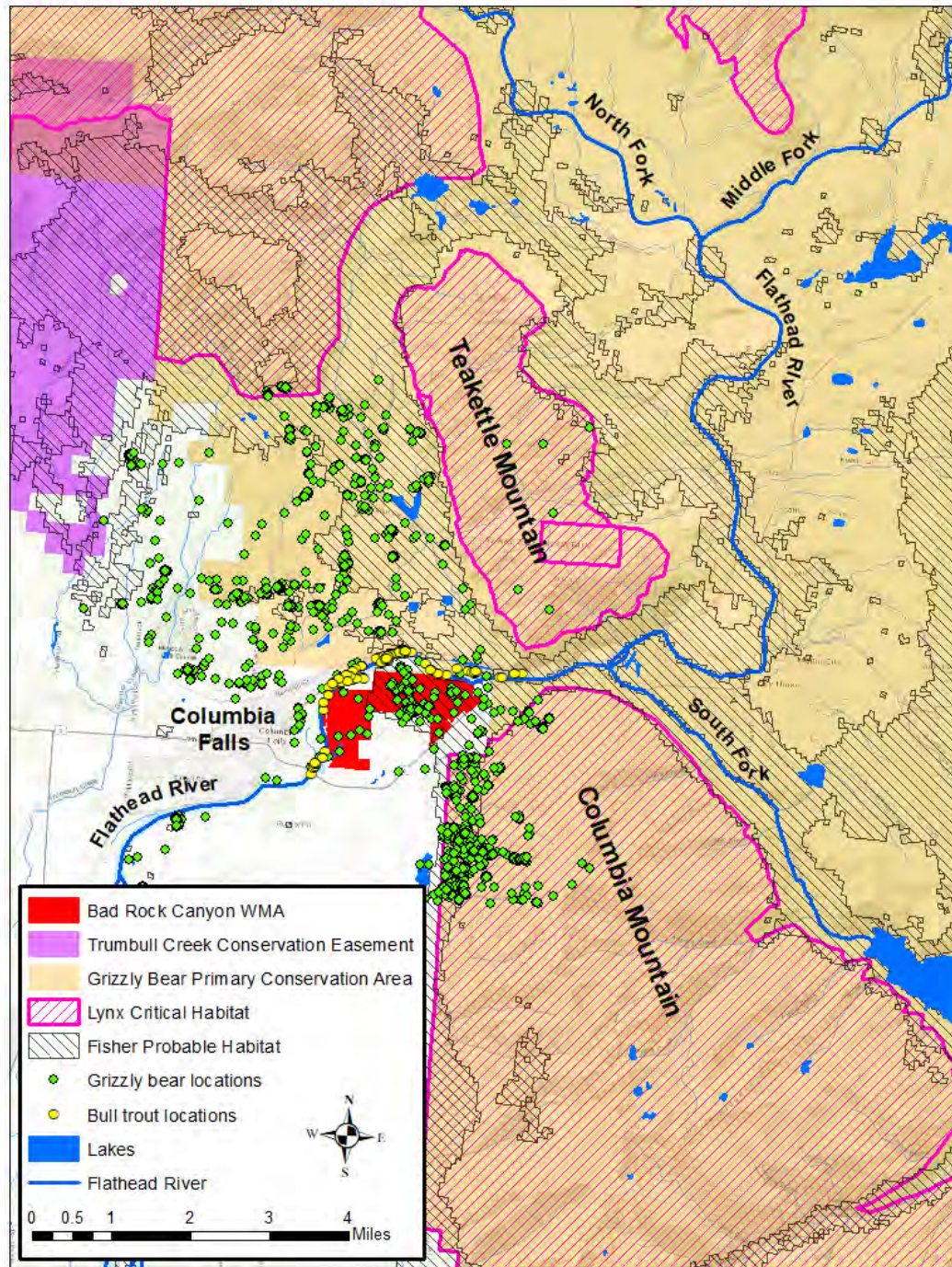
Bad Rock Canyon Wildlife Management Area

772 acres









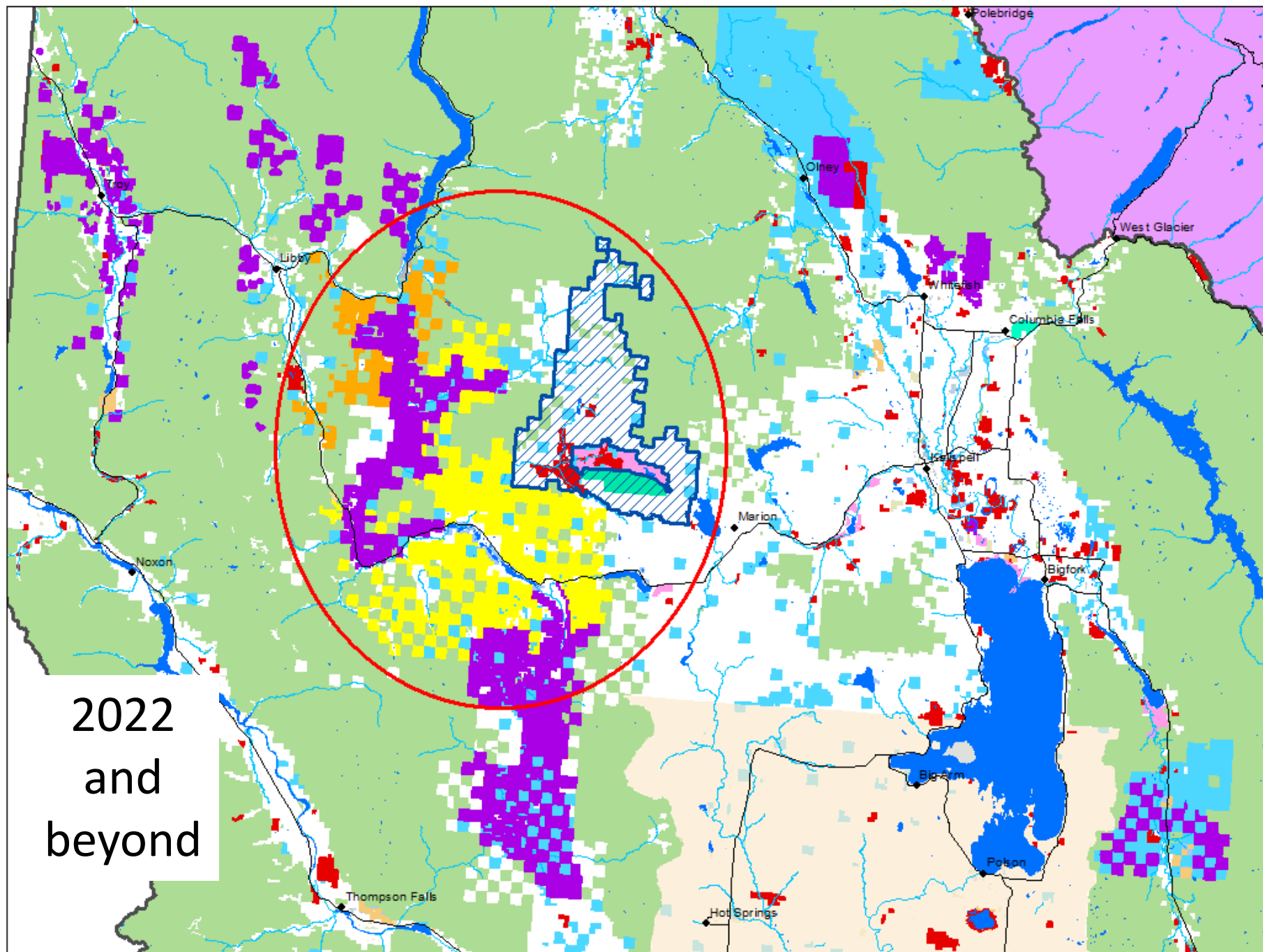




Photo Credit: @kestrelaerial.com





Photo Credit: @kestrelaerial.com





Photo Credit: @kestrelaerial.com



Rapidly changing landownership...



"We see this as a
generational asset.
It is our intent to
manage these lands
as working forests
going forward."
-Green Diamond President
Douglas Reed

Green Diamond buys old Plum Creek timberland

November 2, 2020

Article from the Missoulian

By Rob Chaney, Natural Resources & Environment Reporter

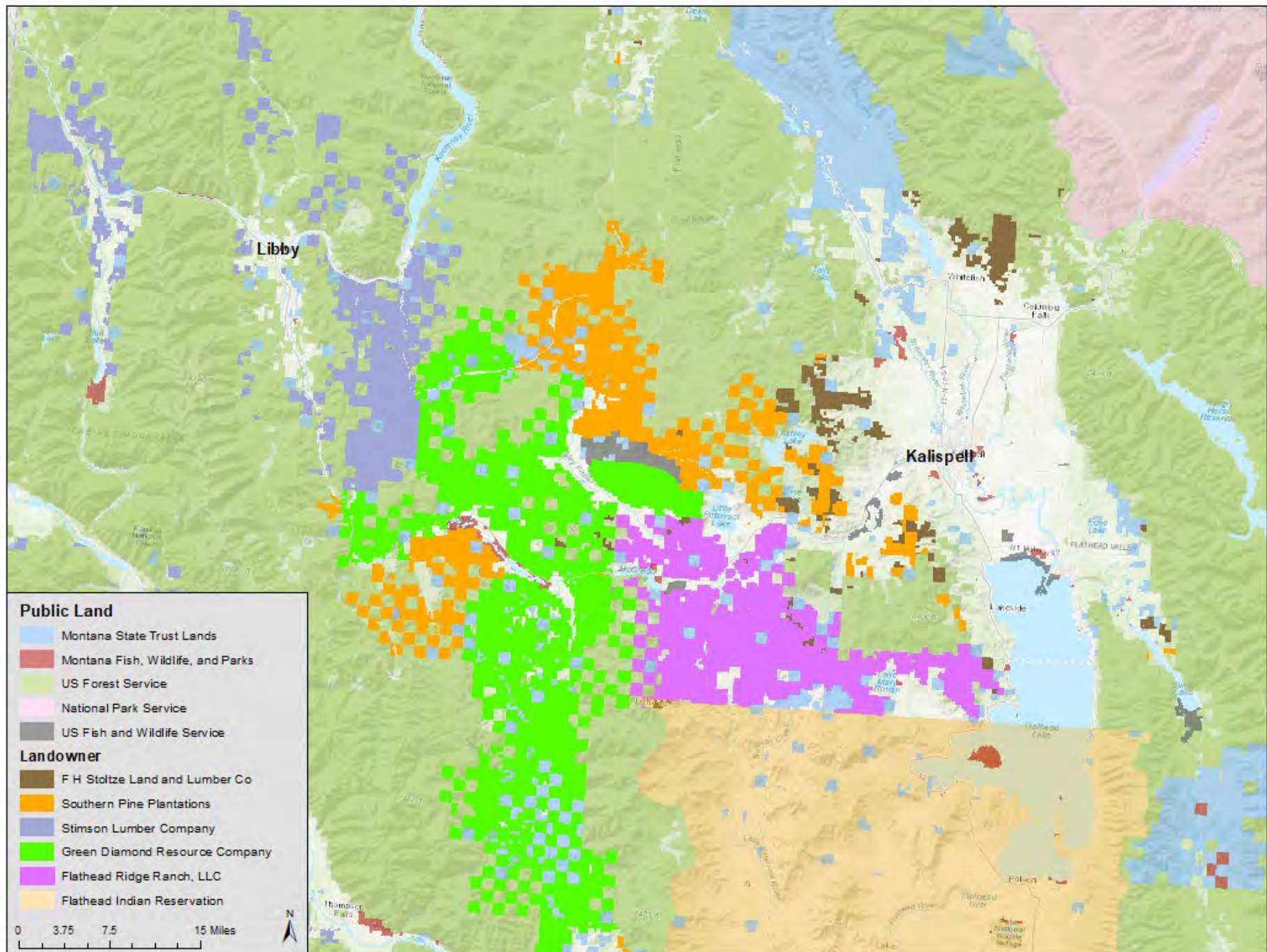


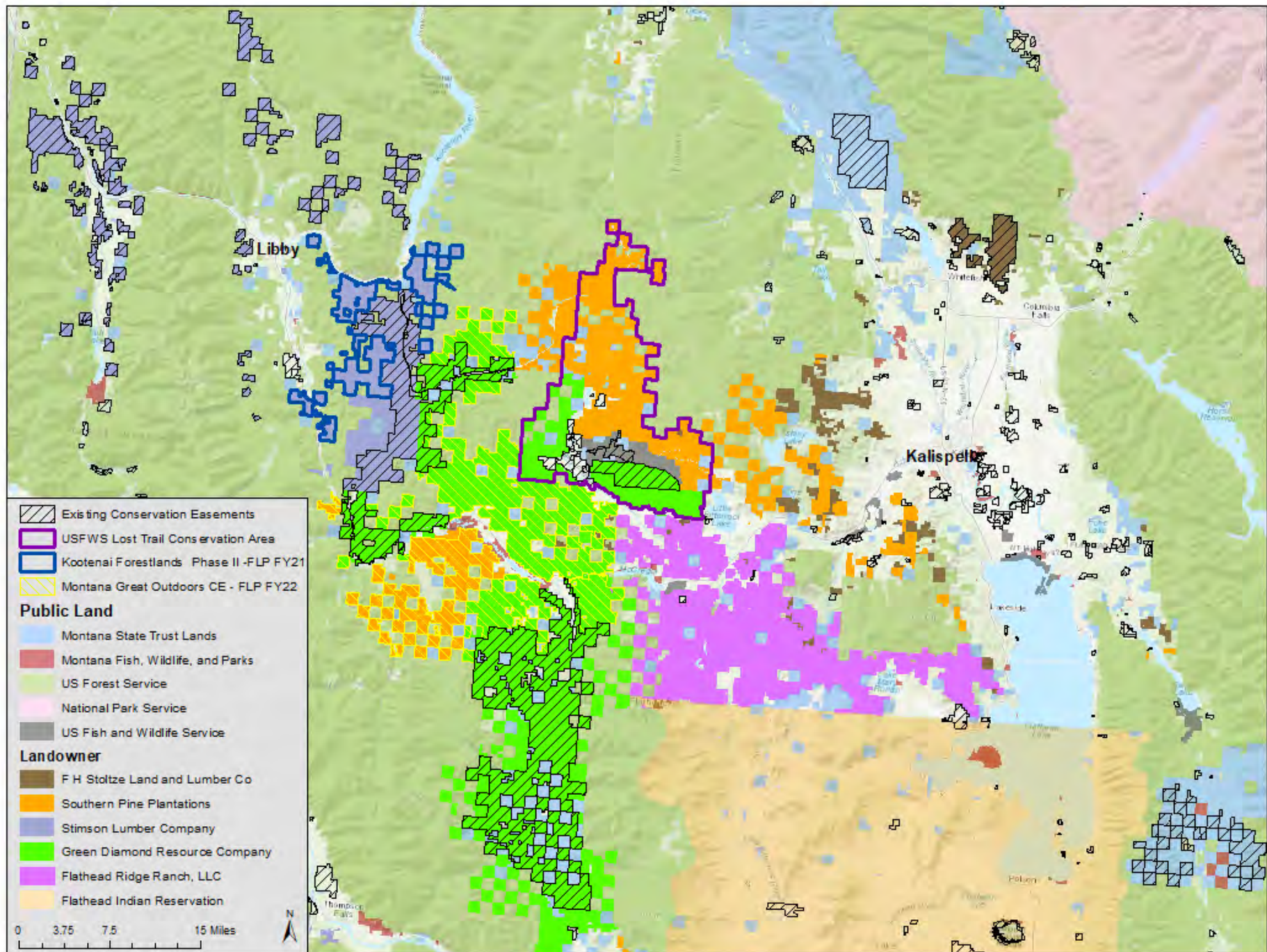
The Thompson-Fisher Conservation Easement between Kalispell and Thompson Falls will soon be under new ownership as Southern Pine Plantations sells 291,000 acres to Green Diamond Resource Co.

Photo by Rob Chaney

Seattle-based Green Diamond Resource Co. has bought 291,000 acres of timberland in









Questions and Discussion

