

SW Montana Grizzly Bear DNA Pilot Project

Jennifer Fortin-Noreus
Grizzly Bear Recovery Program
Fall, 2021

Project Overview

- Goal: Document presence of grizzly bears in Southwest Montana outside current distributions
- Methods
- Preliminary results

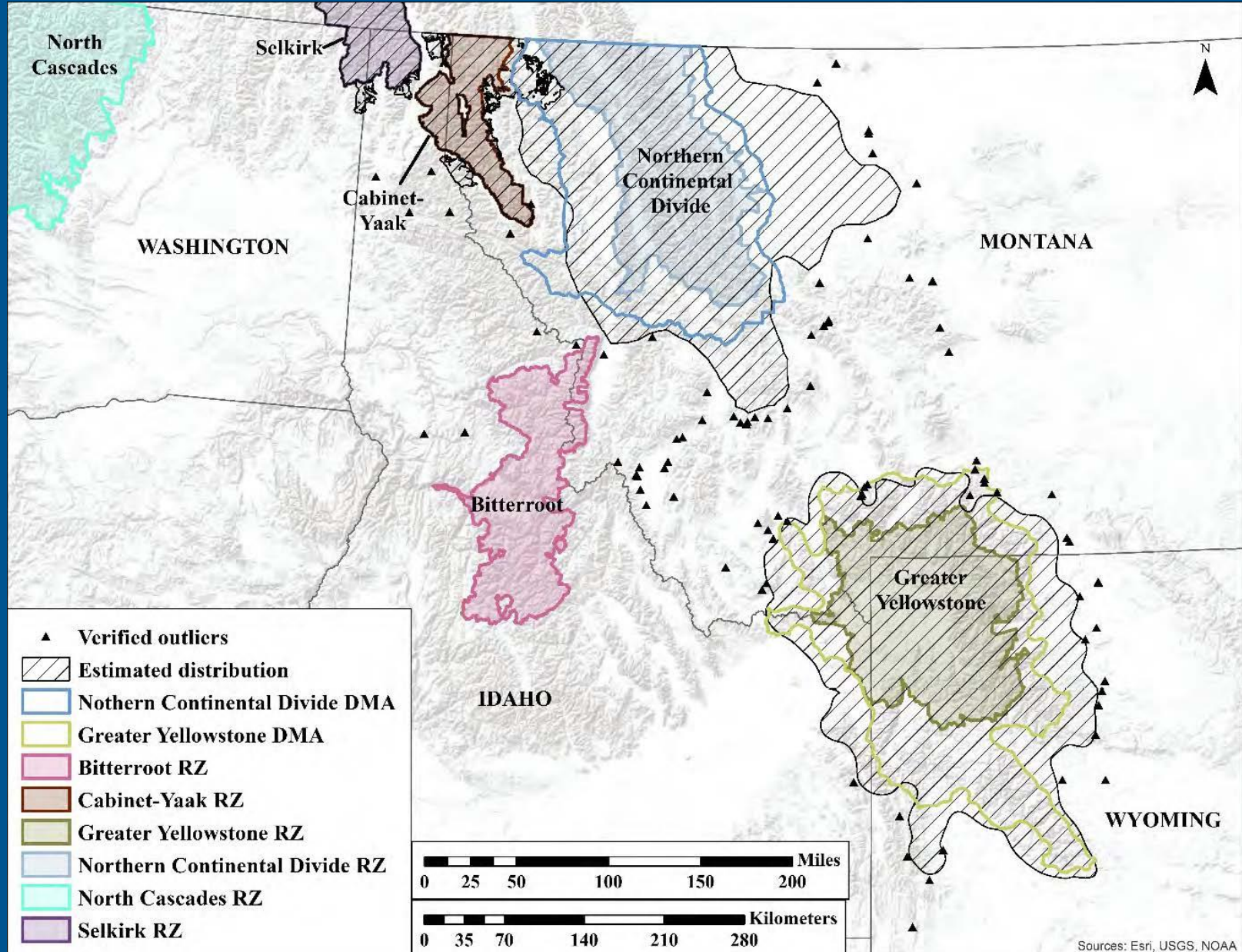


2021 Pilot Year Field Effort

- Crews:
 - USFWS (1 full-time crew, 1 part-time crew)
 - Defenders of Wildlife (2 part-time crews)
 - Lolo NF (2 part-time crews)
- Survey sites:
 - 140 sites on USFS land
 - 3-4 weeks per site
 - 3,446 coral nights
- Timing: mid-May through end of August
- Site location based on previous verified sightings and recommendations of biologists.



Verified Outliers 2010-2019

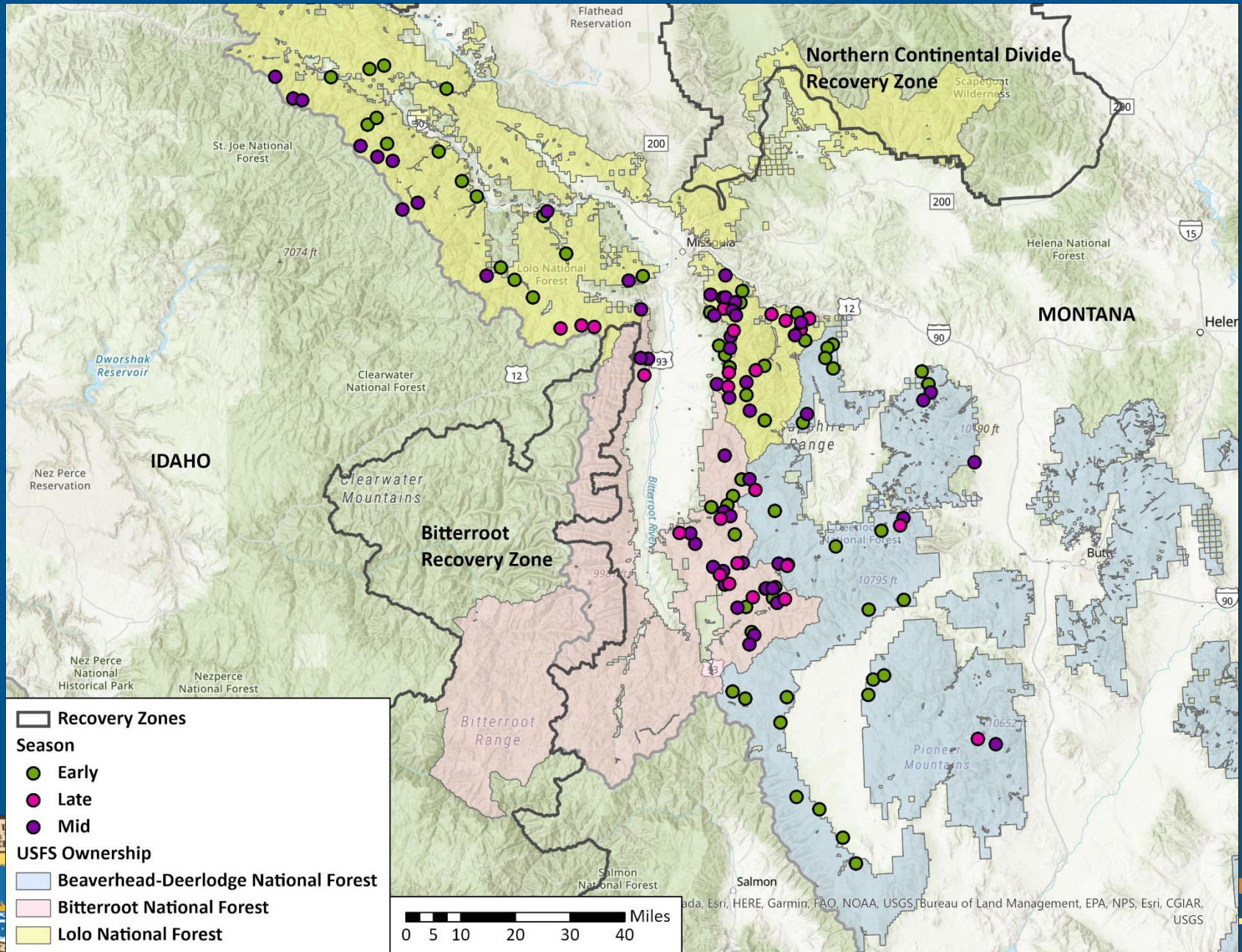


Hair Coral Setup

- Protocol used in the CYE and SE
- Hair corrals (with lure, no bait) with cameras
- Sites > 200m open roads, > 500m campgrounds, >100m closed roads and trails



Site Locations By Season



Detections

- Grizzly bears detected at 1 site
- Black bears detected at 100 sites
- 52 sites with camera issues
- 805 hair samples collected
- 181 hair samples sent to lab for DNA analysis



2021-06-18 6:02:49



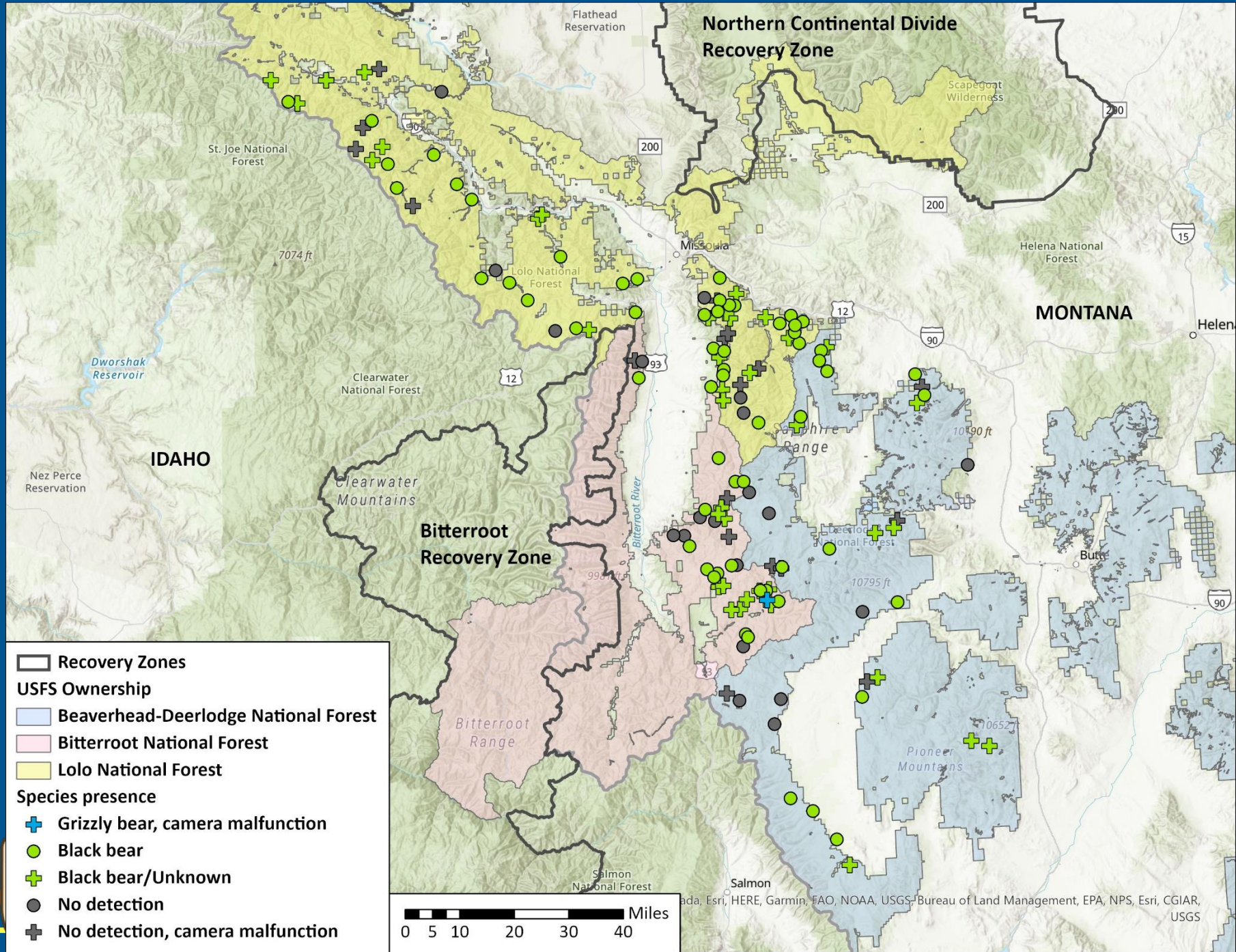
TROPHY CAM

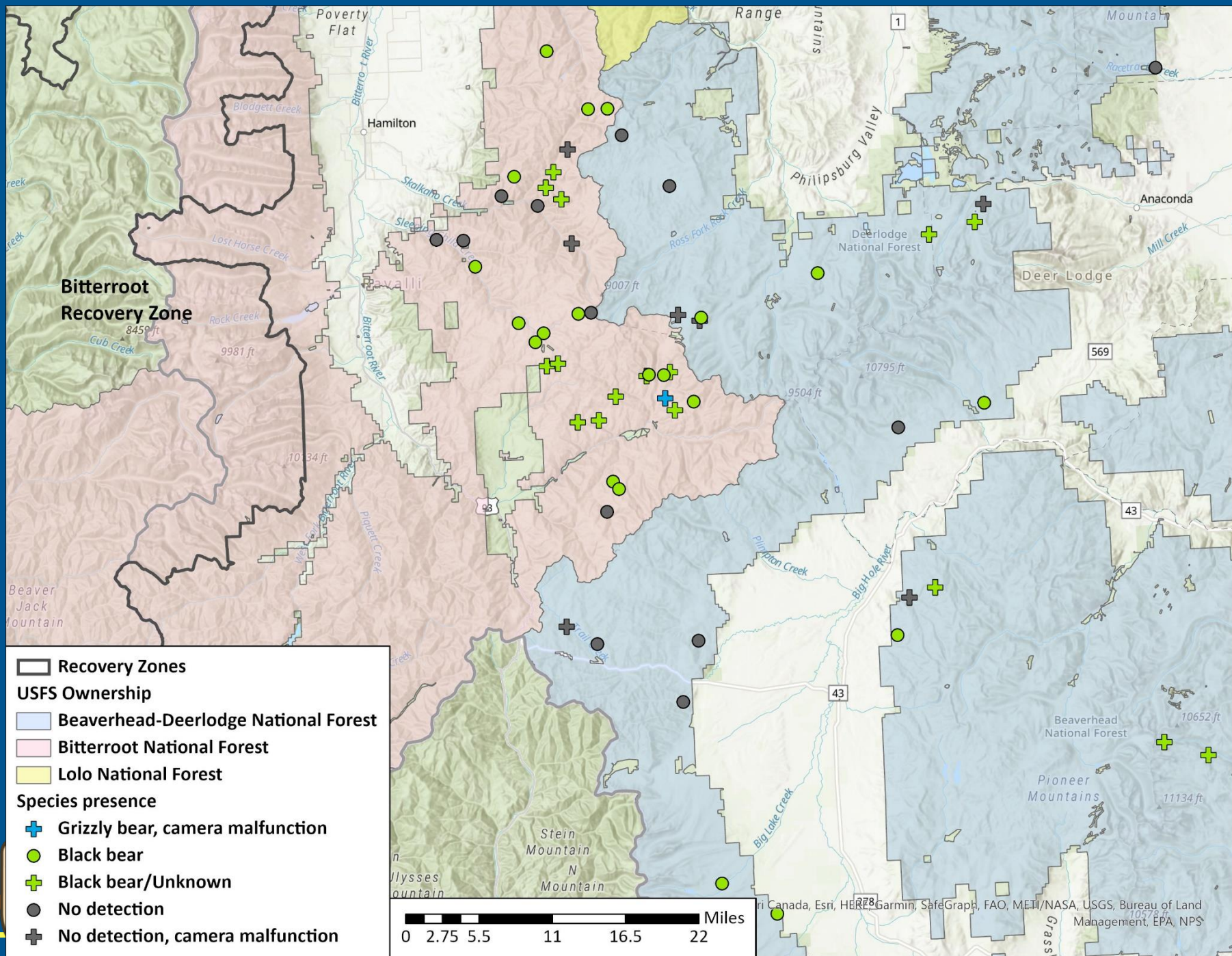
61°F 16°C

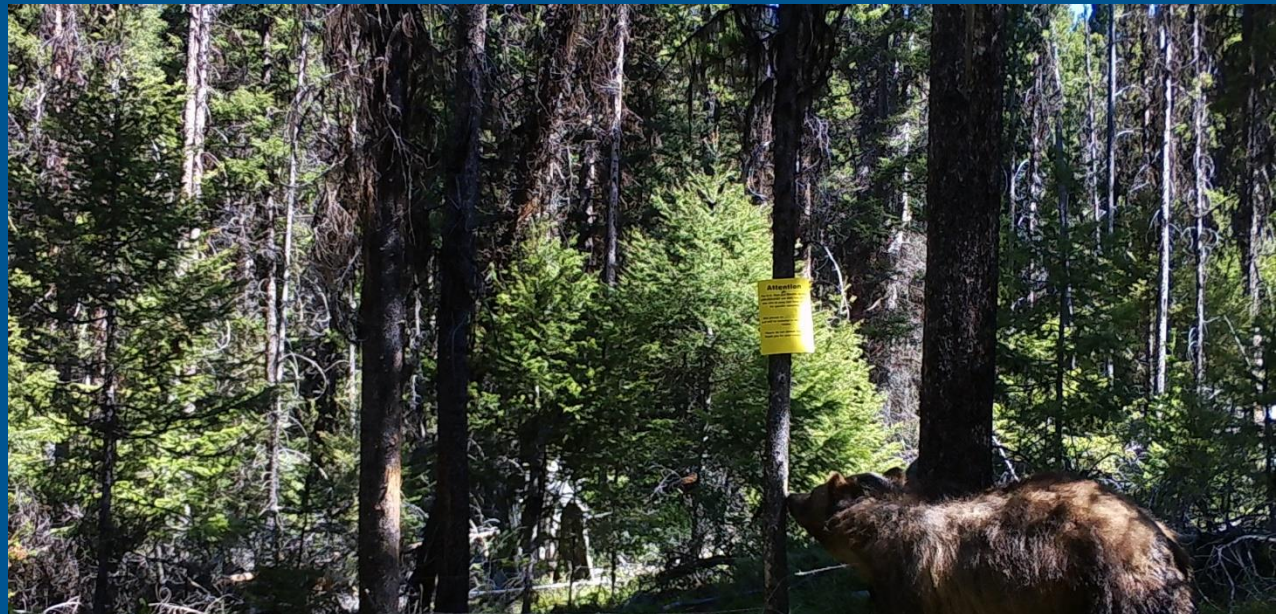
08-01-2021 08:57:00



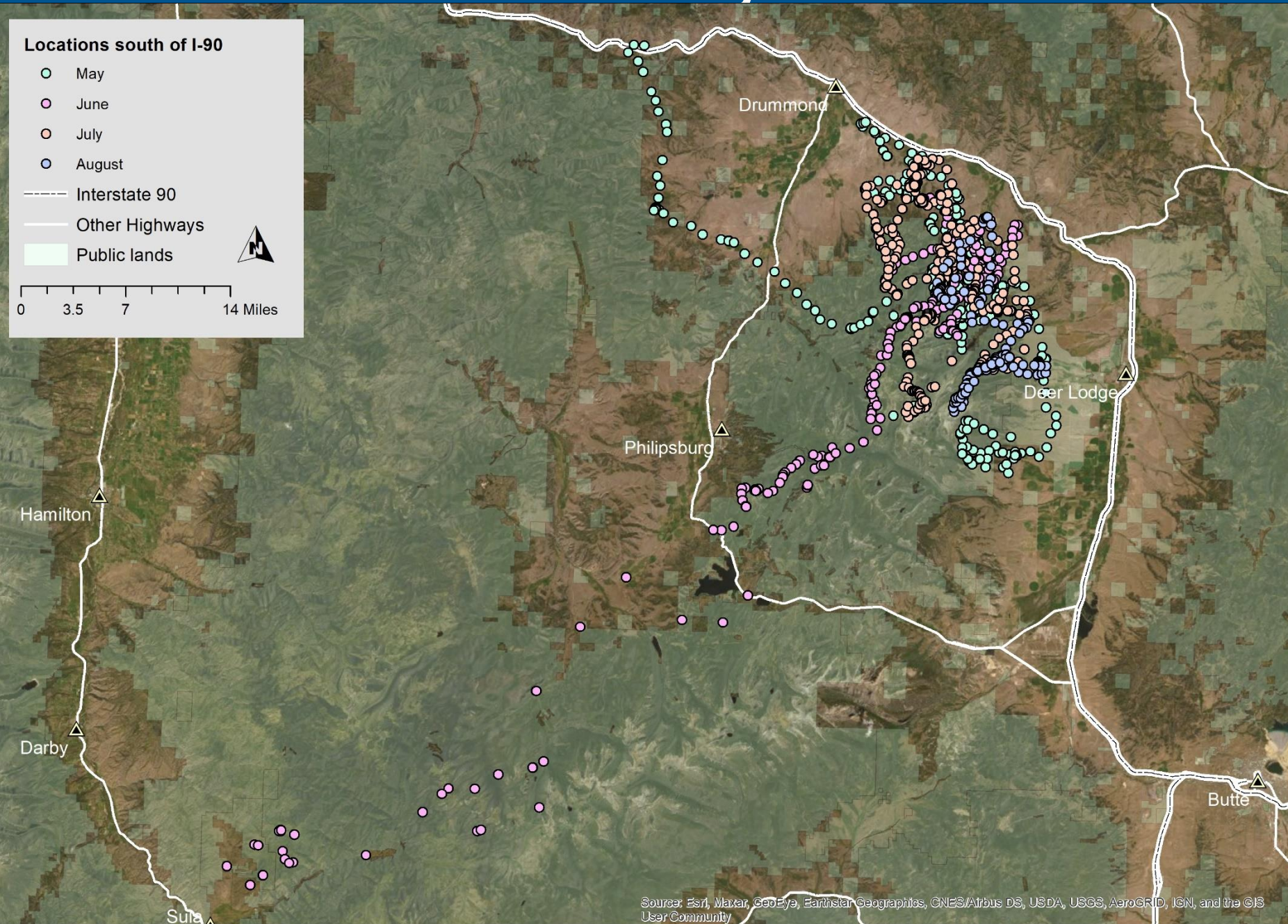
HYPERFIRE 2 COVERT







2021 Locations of Grizzly bear 11072874



SW MT DNA Project

Future Actions:

- Reporting of preliminary results
- Summarize 2021 verified sighting information from partners
- Assess potential areas for improvement
- Reporting of final results from pilot year (Spring 2022)
- Coordination for 2022 field season



2022 Needs

- Cameras
- Truck

