

2021 YES Accomplishments

2022 Work Plans

Jim White

Report Outline

- 2021 Work Update and 2022 Work
- IGBST Annual Report
 - Population Update
 - Demographic Monitoring Improvements
- Executive Committee Questions



2021 Update and 2022 Work

➤ Current Small Working Groups

- Backcountry and Hunting WG
- Livestock Conflict WG
- Conservation Strategy – Chapt. 3 Habitat Standards WG
 - Developed Sites

➤ IGBST

- Advancing Demographic Monitoring

Backcountry and Hunting Working Group

- Food Storage Order - GYE Federal Lands
 - 2021 - Developed FSO for USFS Lands
 - Expect USFS Final FSOs signed winter 2021-2022
 - Reviewed by ID, MT, WY
 - Begin to Assist BLM with consistent FSO language
- WYOGA Video
 - 2021 - Share as widely possible, continue in 2022
- 2021 - Identified consistent educational signage across land ownerships as a need.
 - Begin work on consistent educational signage throughout the GYE - 2022

Livestock Conflict Working Group

- 2021
 - Slow start
 - Began to identify Work Objectives
 - Discussions with Wildlife Services Directors WY, MT, ID
 - Wildlife Services Directors presentations at Fall 2021 YES mtg
- 2022
 - Increase Work Group participation
 - Expand participation beyond YES – NGOs, Wildlife Services, landowners, producers
 - Refine Work Objectives and begin work

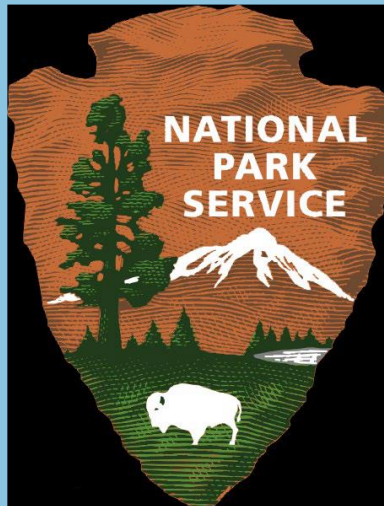
Developed Sites Working Group

- Revise CS Chapter 3 – Developed Sites language
 - YES - multiple years of work
 - 2021 – working group made significant progress towards completion in 2022



Revision Process – Tasks for a Working Group

- Review the habitat standards for developed sites
- Recommend revisions appropriate to visitor use levels



Developed Sites – Visitor Use



- Campgrounds, picnic areas, trailheads, boat launches, rental cabins, summer homes, lodges, service stations, and restaurants



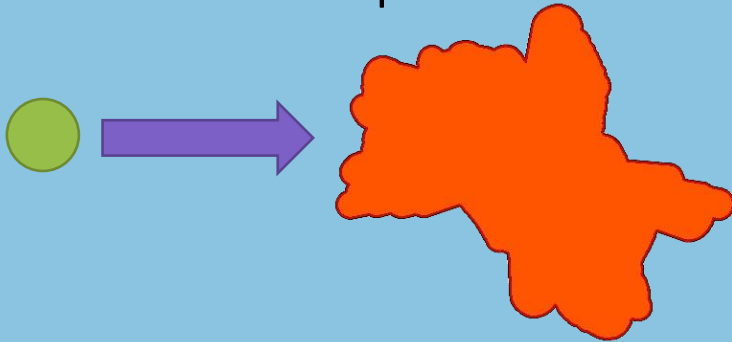
Developed Sites – Administrative

- Unit headquarters, ranger stations, patrol cabins, park entrances, employee housing and other facilities supporting administration



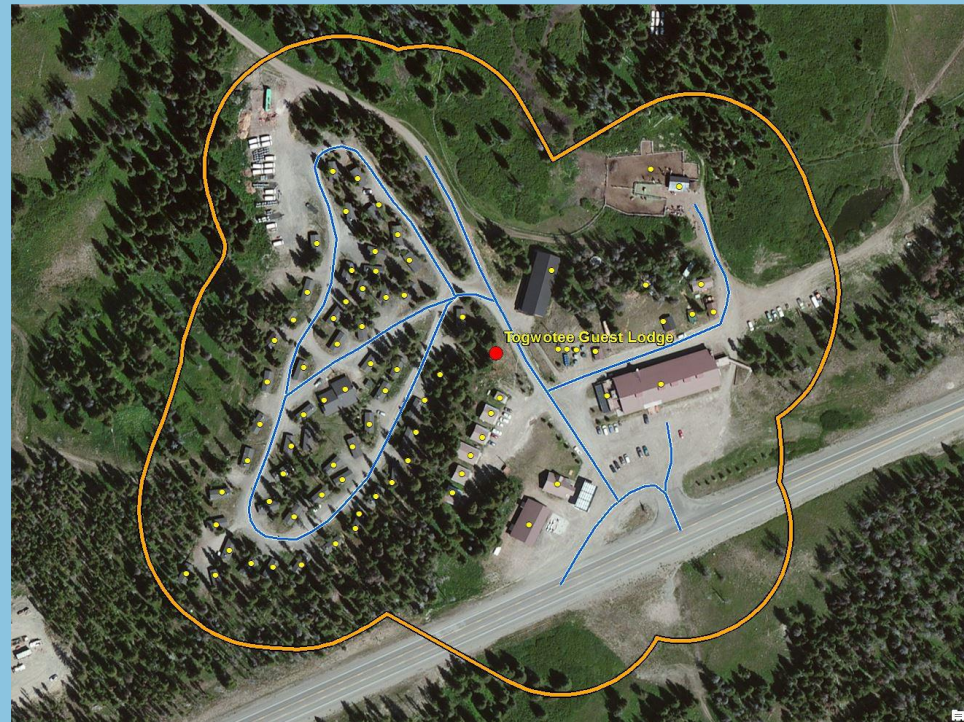
Revision Process – Improved Mapping

- Correct errors
- Replace developed areas points (where appropriate) with 'footprints'

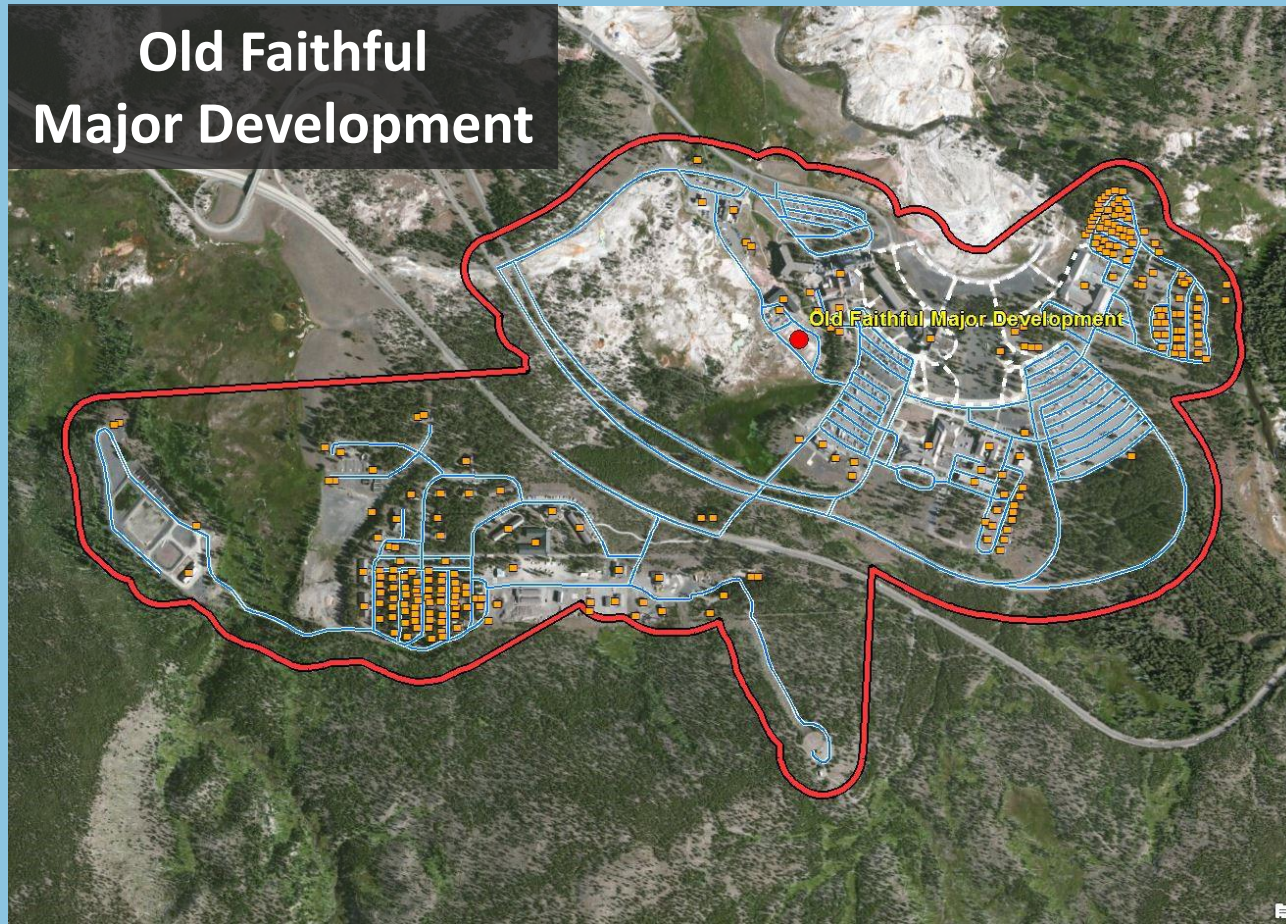


Advantages to the Footprint Approach

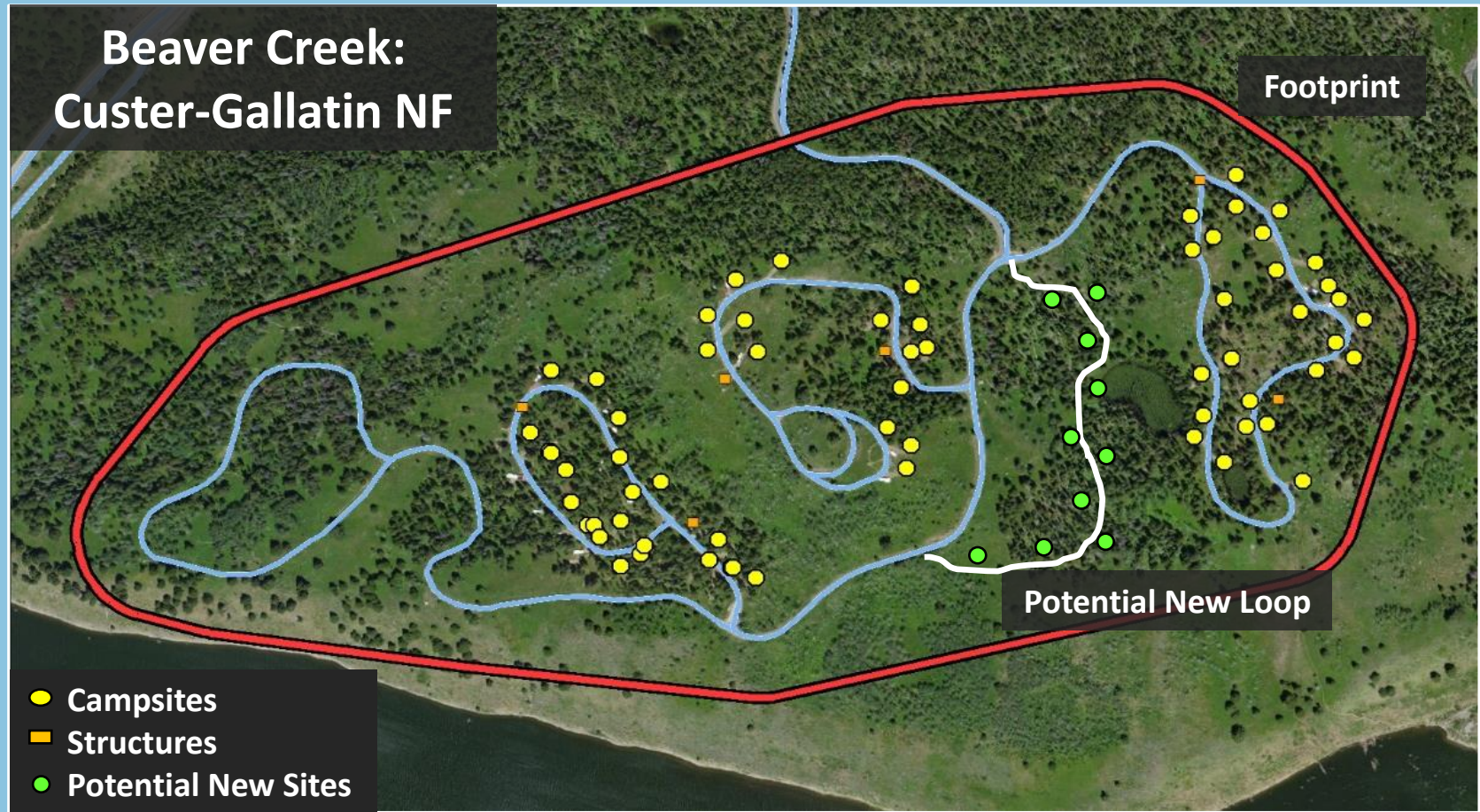
- Advantages:
 - Accurate representation of human presence
 - Defines a space for expansion
 - Imposes measurable sideboards
 - Provides management opportunity



Yellowstone National Park Example



US Forest Service Example



Next Steps – 2021, 2022

Public comments (as per the Conservation Strategy, p. 55):

- email: comments-intermtn-bridger-teton@usda.gov
 - include “YES grizzly bear” in subject line of email
 - comments accepted until December 31, 2021
- Process and evaluate public comments over winter 2022
 - Goal: Finalize revisions at spring 2022 YES meeting

(See Draft Revisions for Chapter 3 and Appendix E at IGBOnline.org)

IGBST Annual Report: GYE Population Update

Population

- 16-km distance criteria used to estimate unique females with cubs in Demographic Monitoring Area (DMA): $n = 71$
- Population estimate = 1,069

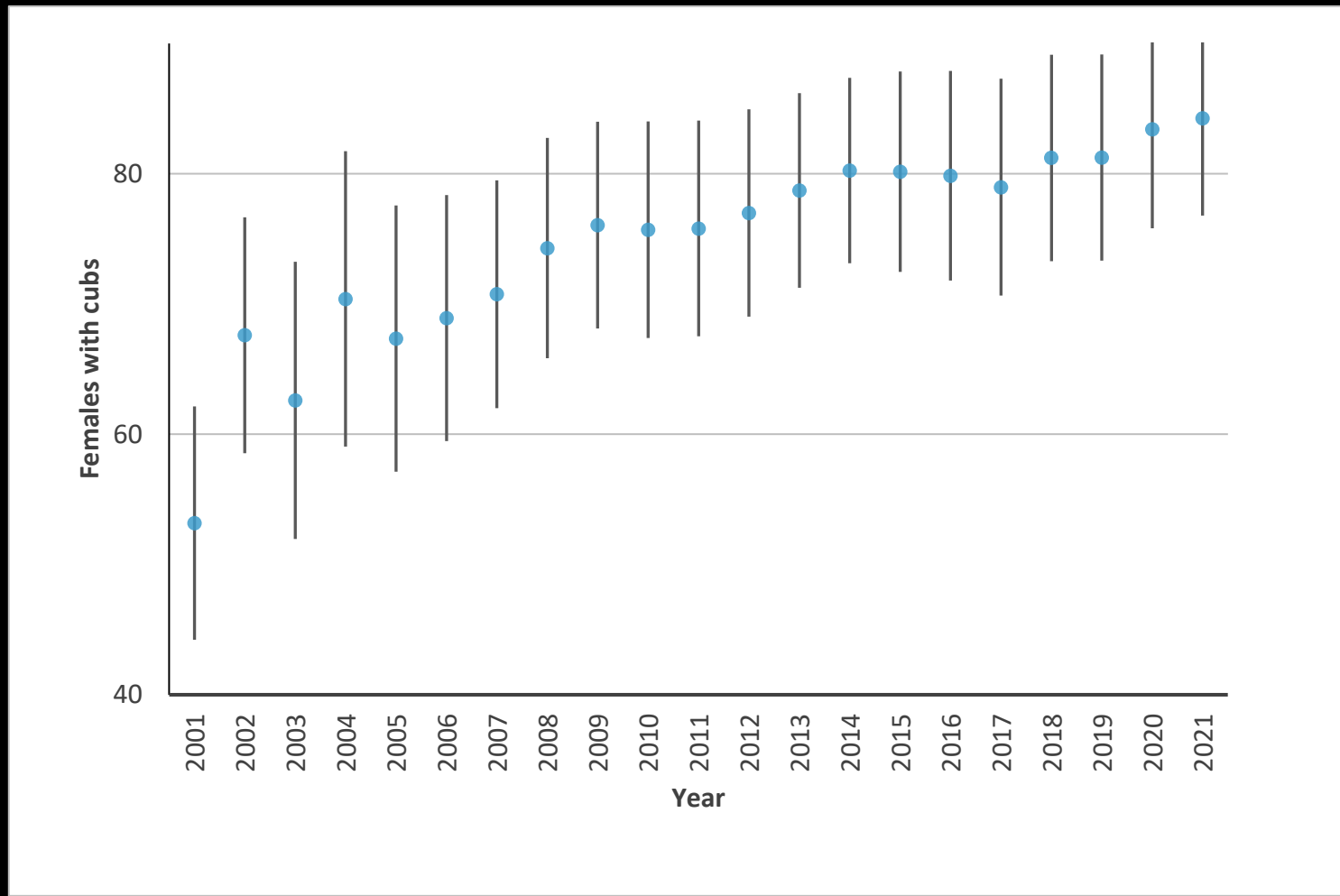
Mortality

- Primary causes inside DMA: site conflict, self-defense, and livestock
- 2021 mortality rates in DMA
 - Within thresholds for independent females (5.7%)
 - Within thresholds for independent males (8.1%)
- 33% of mortalities occurred outside the DMA

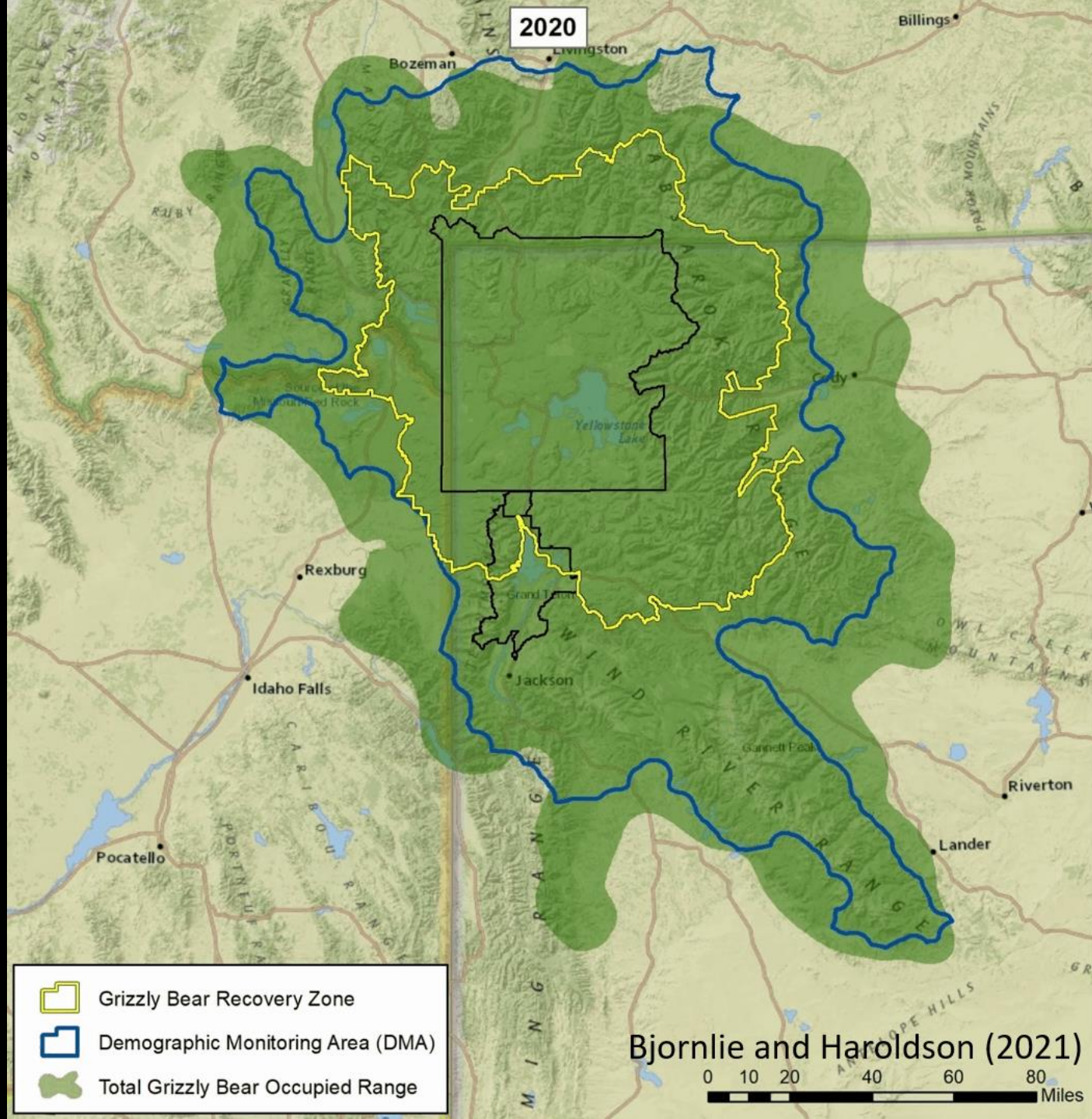
Food supply

- Good berry production, good moth-site year
- Average whitebark pine cone production, better in the north

Trend in annual estimates of females with cubs 2001-2021 (DMA; 16-km Chao2 method)



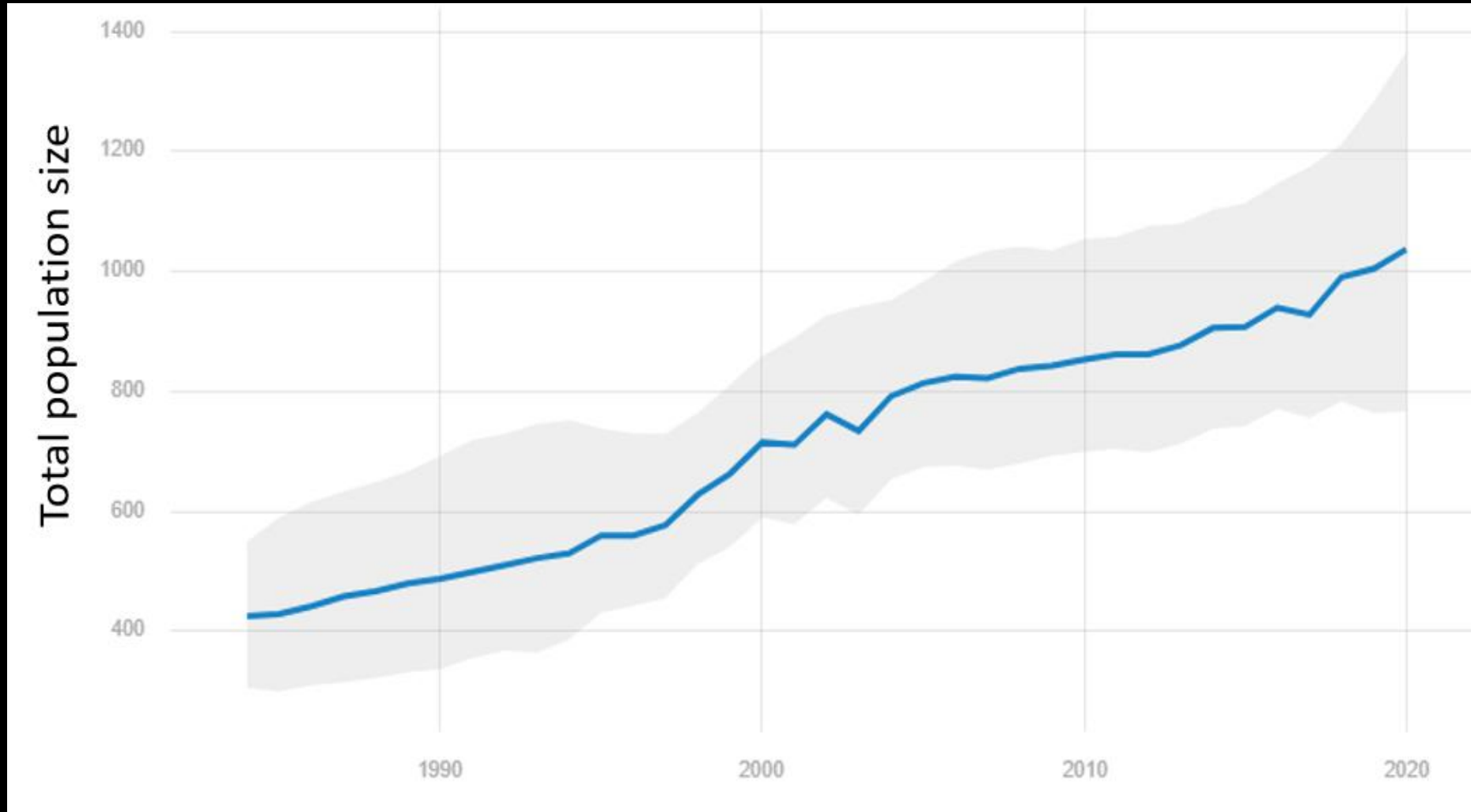
Occupied range
(2006-2020)
70,468 km²



Advancing Demographic Monitoring

- Chao2 re-assessment report (published April 2021)
- Evaluation of Integrated Population Models (IPMs)
- Develop recommendations for updating IGBST monitoring protocol

Preliminary look: IPM estimates 1983-2020



Ongoing and next steps

- Incorporate 16-km Chao2 estimates into IPM (completed)
- Update IPM with 2019-2021 data and final testing (ongoing)
- Final reporting to YES-IGBC (spring 2022)

Executive Committee Questions

- What do you see as the most important things the Subcommittees need to work together on in 2022?
 - Sharing of I @ E work and products.
 - Sharing of ideas for what works related to conflict management.

- What else do you want the Executive Committee to know about your work?
 - Tons of I@E and conflict management work going on, just not enough time to inform IGBC about it all.

- Is there any specific direction that it would be helpful to get from the Executive Committee?
 - More coordination prior to finalizing subcommittee Work Plans.
 - What does IGBC want us to work on?

Questions?

