

IGBC BEAR SMART COMMUNITY UPDATE

IGBC BSC Working Group

Lori Roberts, IEO Chair

Kim Johnston, People and Carnivores

Kim Annis, MT FWP – Kristi Johnson-Hughs, FWS

Danielle Oyler, MT FWP

Jen Bruns, IDFG

Denise Schultz, NPS

Dillon Tabish, MT FWP

Mike Badrey, British Columbia

Jeremy Nicholson, IDFG

Kyle Garrett, WYFG

Andrea Morehouse, Winsik Research and Consulting

Why have an IGBC Bear Smart Community Program?

- **Consistent criteria that is created and approved by bear specialist**
- **Bring community members together for a common goal**
- **Reducing human-bear conflict**
- **Consistent Bear Education across all recovery areas**
- **Consistent Bear Messaging**

IGBC Bear Smart Community Criteria

Six key criteria to becoming a Bear Smart Community

Criteria 1

Form a Bear Smart Committee

Form a Bear Smart Committee made up of local community members, stakeholders, community officials, solid waste management, and the assistance of a wildlife consultant



Start now!

Criteria 2

Community Assessment

Complete a Community Assessment looking at the community, wildlife and surrounding landscape, the history of bear-human conflicts, and natural and non-natural attractants around the community



Start now!

Criteria 3

Make Bear Smart Community Plan

As a community with the Bear Smart Committee, develop a Bear Smart Community plan, aimed at addressing the potential for bear-human conflicts based on the community assessment



Start now!

Criteria 4

Implement Bear Education Program

Develop an ongoing bear education program in the community, aimed at educating local residents, including new residents moving to the area, and other identified audiences in the community



Start now!

Criteria 5

Implement Garbage Mgmt. Program

Implement a Garbage Management Program, aimed at securing access to refuse from residential to businesses and public areas in the community identified as high risk



Start now!

Criteria 6

Incentives, Bylaws, Ordinances

Develop a strategy to provide incentives, or implement bylaws or local ordinances to ensure compliance with local Bear Smart Community efforts, including bylaws related to trash.



Start now!

IGBC BEAR SMART COMMUNITY

CERTIFIED

Certified IGBC Bear
Smart Community



SILVER


Certified IGBC Silver
Status Bear Smart
Community




GOLD

Certified IGBC Gold
Status Bear Smart
Community 5+ years







Criteria 1
Form BSC
Committee



Criteria 2
Complete BSC
Community
Assessment



Criteria 3
Make BSC
Community
Plan




Criteria 4
Implement BSC
Education
Program

IGBC BEAR SMART CRITERIA


Implement
Garbage
Management
Program

Criteria 5



Strategy for
Incentives or
Enforcement

Criteria 6



Bylaws,
Ordinances,
Enforcement

Silver

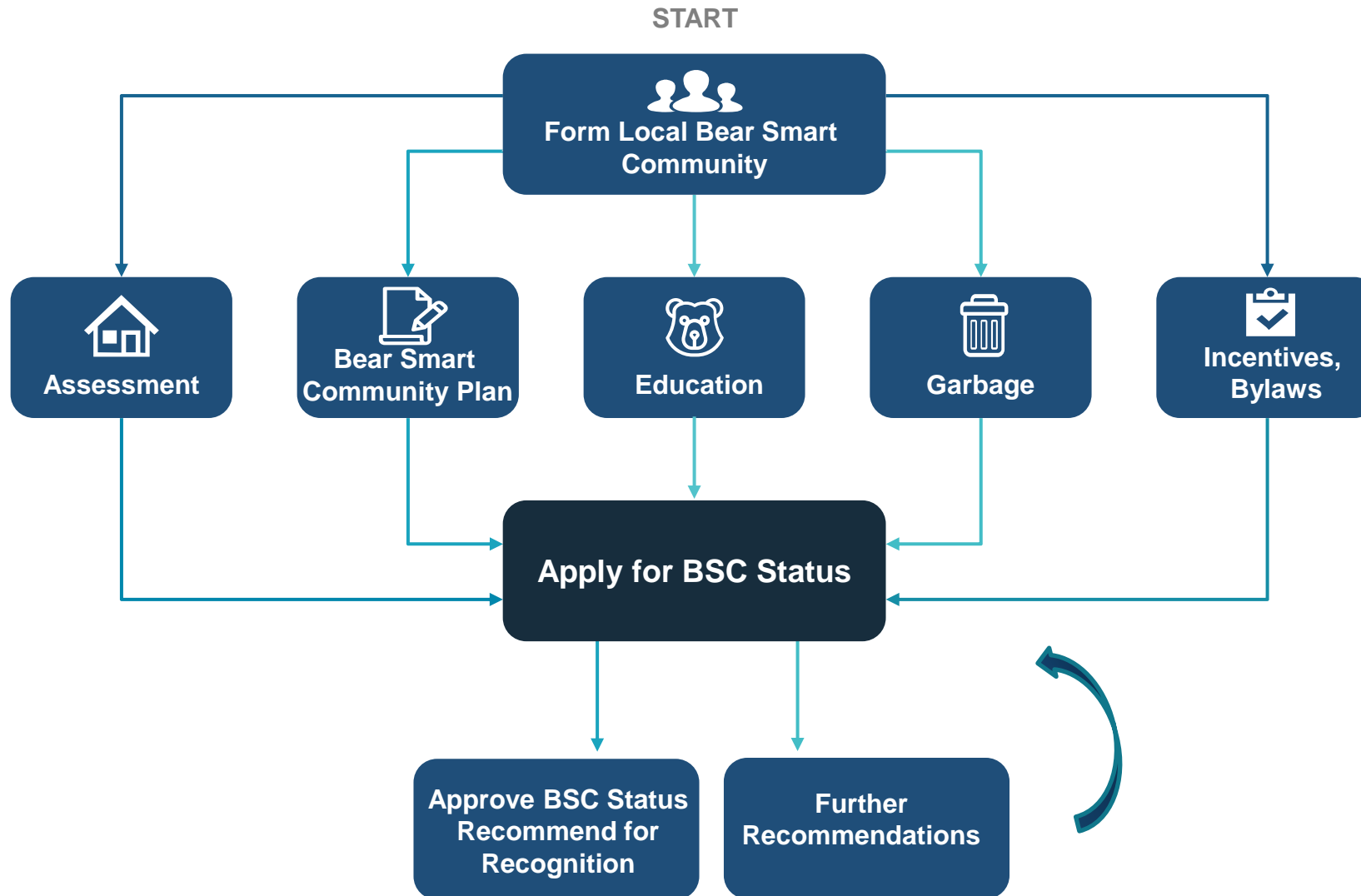


Bear Smart
Community 5+
years

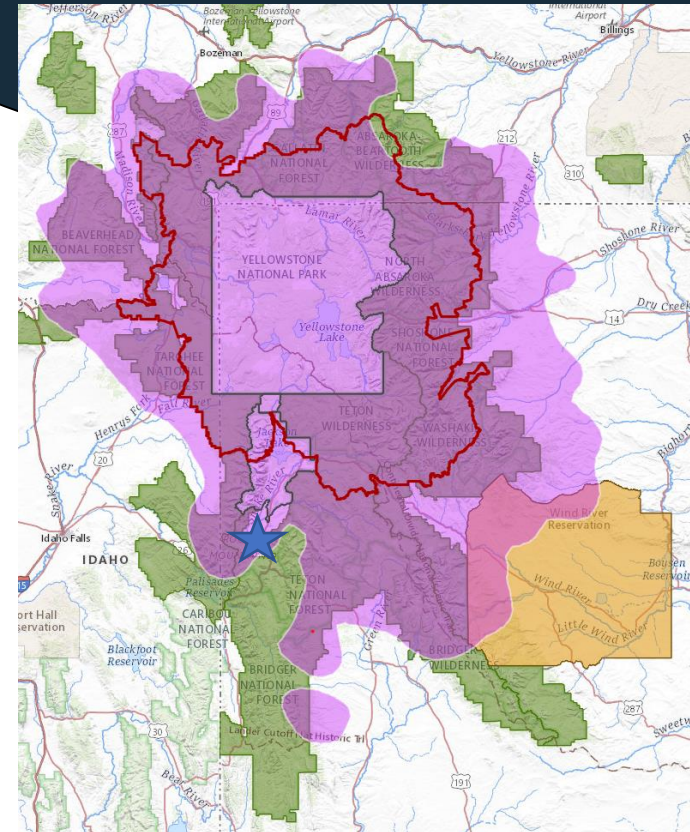
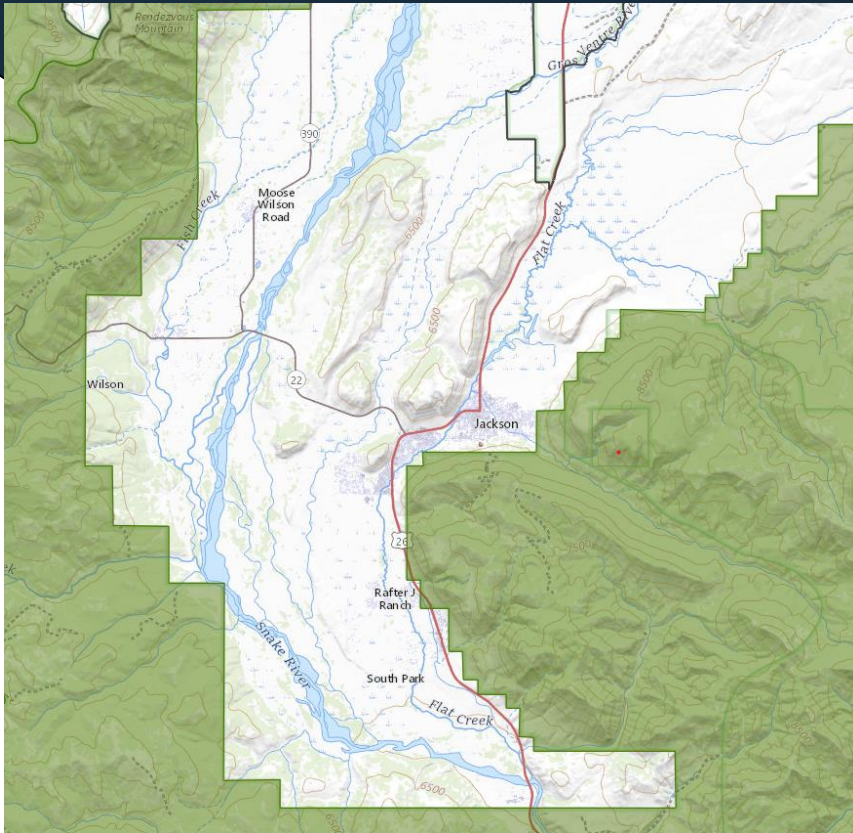
Gold



Process to Becoming a Bear Smart Community



IGBC Bear Smart Community Pilot Study



What can communities do right now

BEAR
Wake-up Social

Thurs. Apr. 20th
6-8 pm

Swan River
Community Hall
115 Swan River Road
Bigfork

Join us for the "Spring Wake-up Social" a community event to help people learn about grizzly bear behavior, biology, and conflict management. MT Fish Wildlife & Parks Grizzly Bear Management Specialists will be on hand to share their stories and answer questions.

TIM MANLEY - Region 1
Managing Grizzly Bears and People in the
Greater Flathead Valley

MIKE MADEL - Region 4
Grizzly Bears of Montana's
East Front

Free admission. Complimentary pizza and beer 'till gone!

SWAN VALLEY BEAR RESOURCES
SWAN VALLEY CONNECTIONS

For details contact
SwanValleyConnections.org
or call 406 754 3137

ROSAS PIZZA
U.S. Fish & Wildlife Service

BEAR FAIR

A community event to help people learn about grizzly bear behavior, biology, and conflict management.

SAT., JUNE 3RD, 12-4PM
At Swan Valley Community Hall, Condon

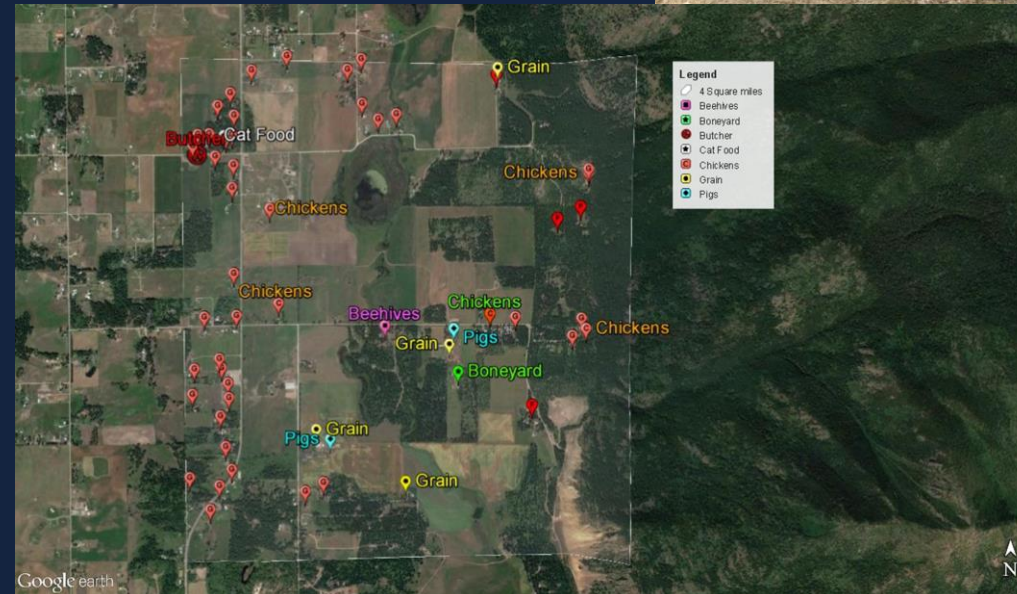
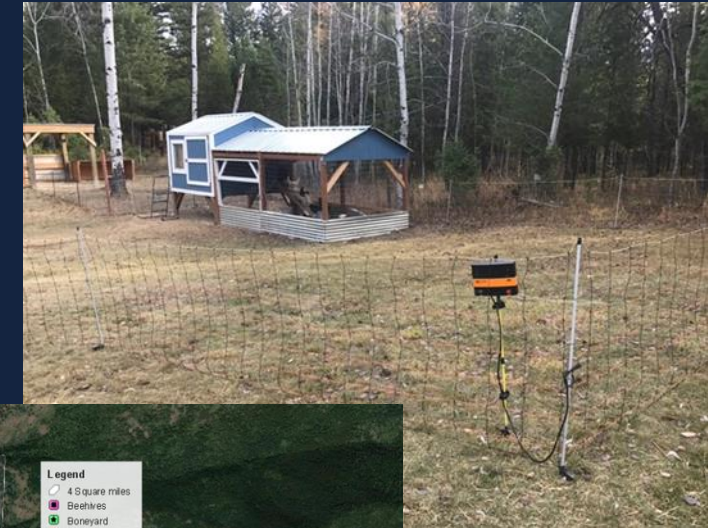
Presentations by:
Chris Servheen (Former USFWS), Tim Manley and Lori Roberts (FWP)
Additional bear management experts, professionals, organizations, and companies will be available to provide information.

Kids activities
FREE PIZZA by Swan Valley Cafe and **BEER** by Big Sky Brewing Co.
'till gone!

For details visit SwanValleyConnections.org or call 754-3137

Hosted by: **BEAR RESOURCES**
Partners: **SWAN VALLEY CONNECTIONS**, **U.S. Fish & Wildlife Service**

Swan Valley Bear Resources' mission is to promote human-bear coexistence in the Swan Valley.



IGBC Bear Smart Community Future

- Implementing the Program
- Capacity to run the program
 - Shared position between States and Federal Agencies
- Funding to assist communities
- Executive Committee Involvement