

# Teton County Wildlife Feeding & Bear Conflict Area Land Development Regulations

March 6, 2022

Yellowstone Ecosystem Subcommittee IGBC

Presenter: Chris Colligan

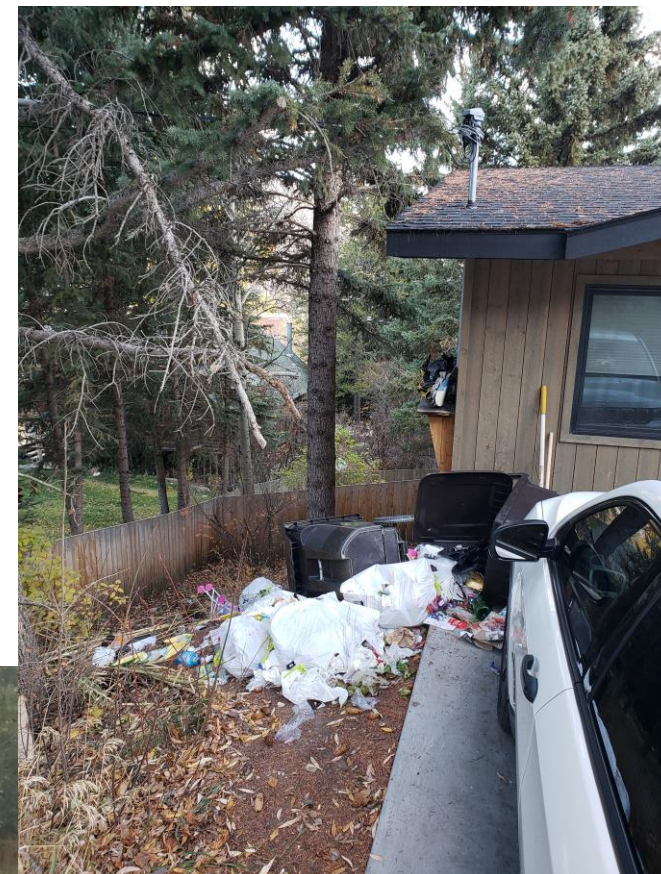
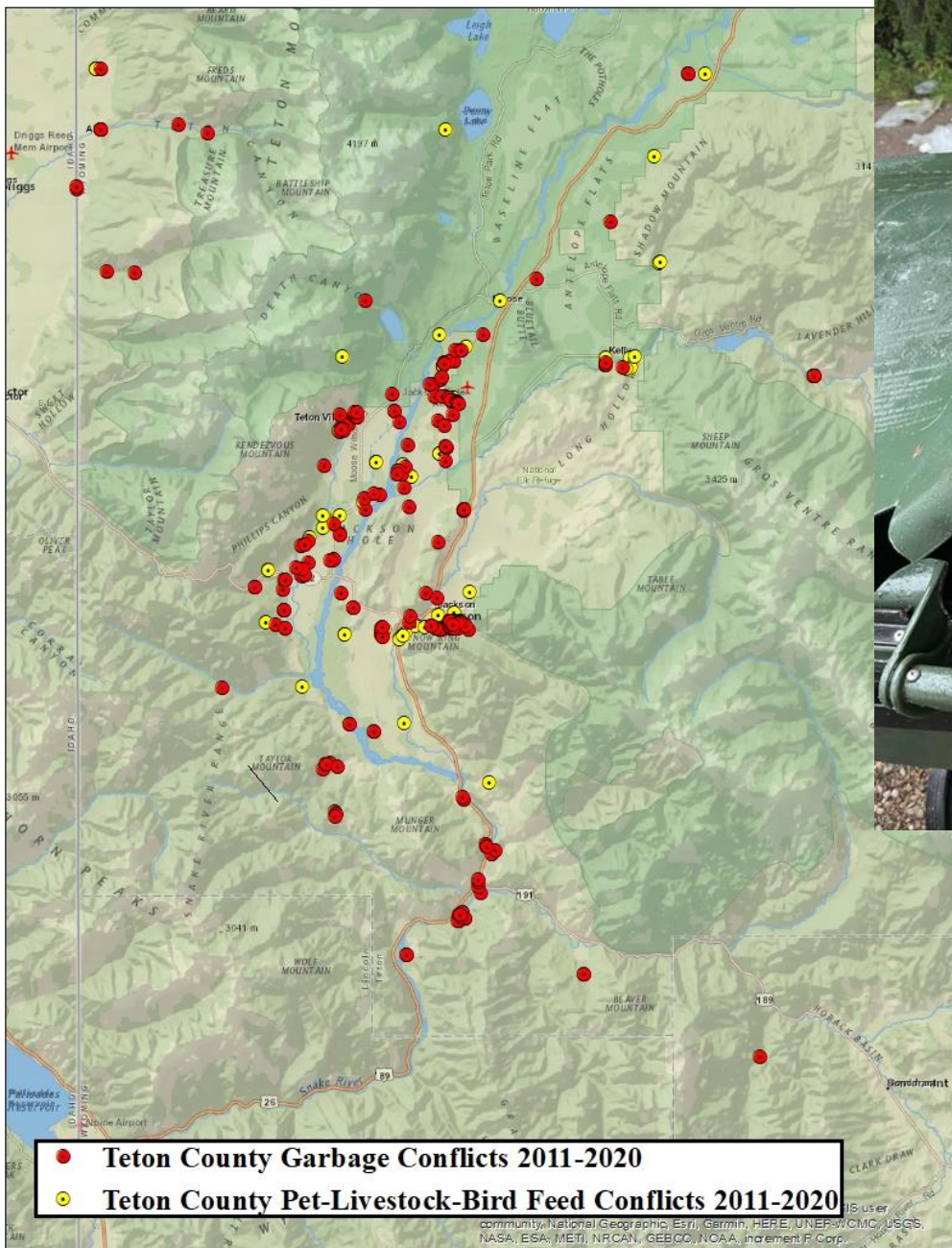


# Background

---

- Comprehensive Plan
- Ecosystem Stewardship – Common Value 1
  - *Chapter 1, Principle 1.1* – Maintain healthy populations of all native species
  - *Policy 1.1.d* Limit human/wildlife conflicts
  - “...attracting wildlife into the built environment can be dangerous for both wildlife and humans. Human/wildlife conflicts, especially those involving large predators, can result in human injury and/or relocation or killing of the animal.”





Map and photos provided by WGFD

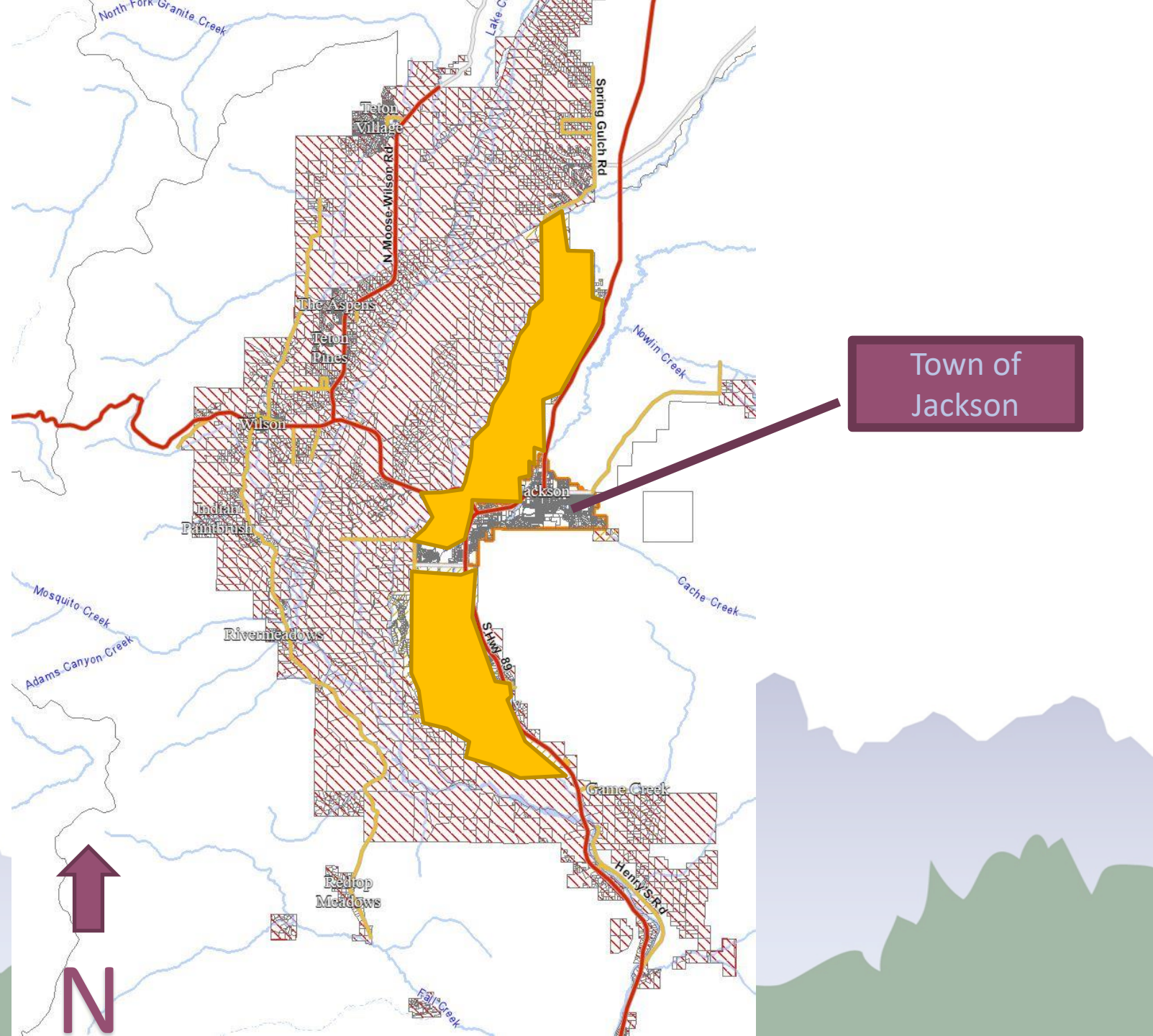
## Current Map

### Bear Conflict Areas – Countywide

CPA 1 – Conflict Priority Area 1 (red)

CPA 2 – Conflict Priority Area 2 (gold)

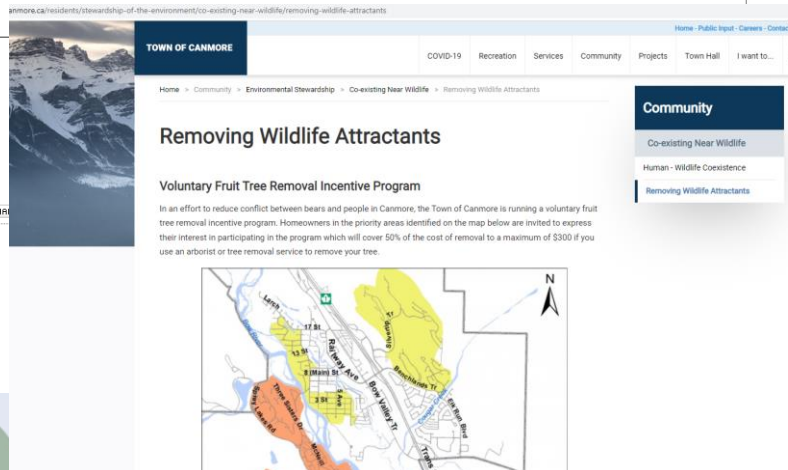
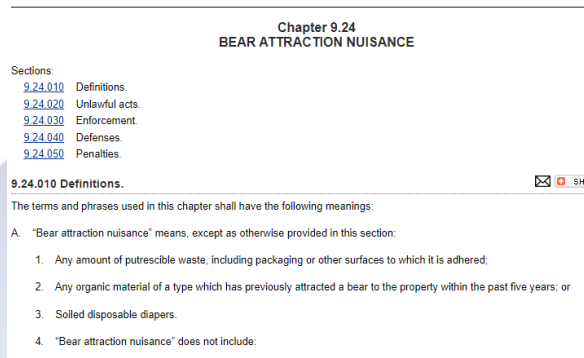
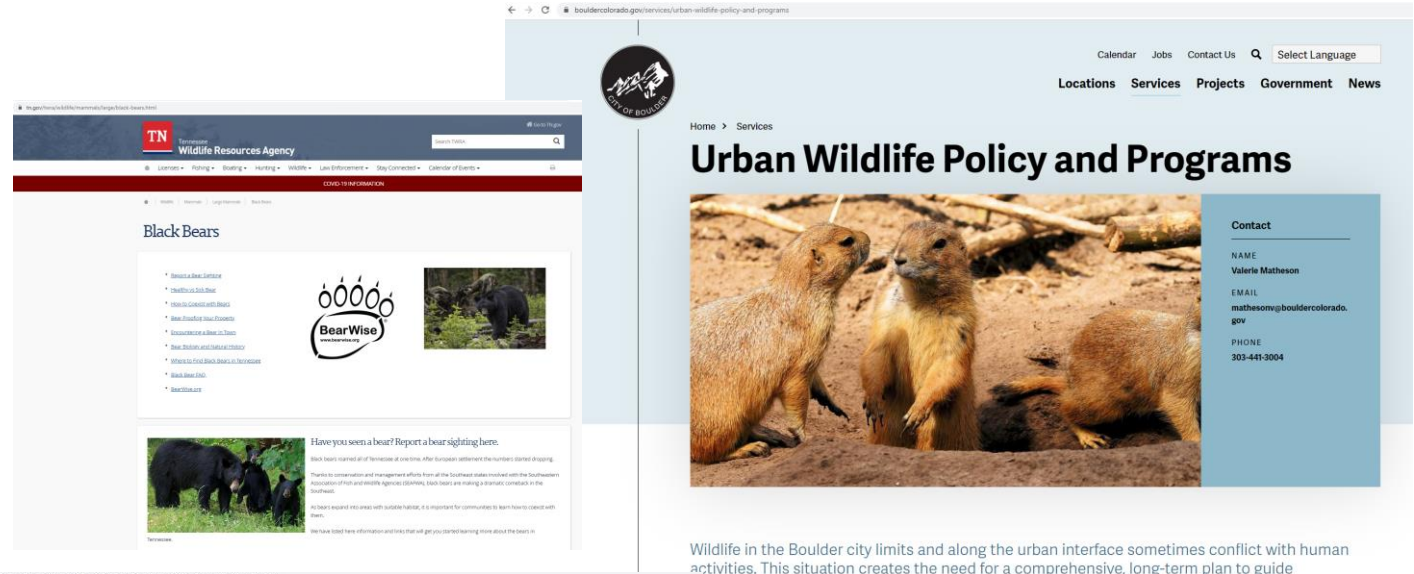
Areas in Gold proposed to  
change for bear resistant  
trash can requirement



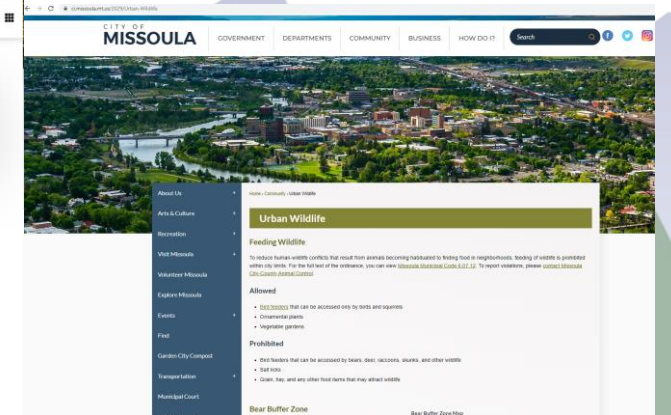
- Other Communities:

- Durango CO
- Seminole County FL
- Washoe, Carson & Douglas Counties NV
- Boulder CO (Urban Wildlife Policy)
- Whistler CAN
- Teton County ID (Chapter 7)
- Missoula MT
- Wilton NY
- Canmore CAN –fruit tree & berry harvest
- Many Others....

# Background



Wildlife in the Boulder city limits and along the urban interface sometimes conflict with human activities. This situation creates the need for a comprehensive, long-term plan to guide



# Background

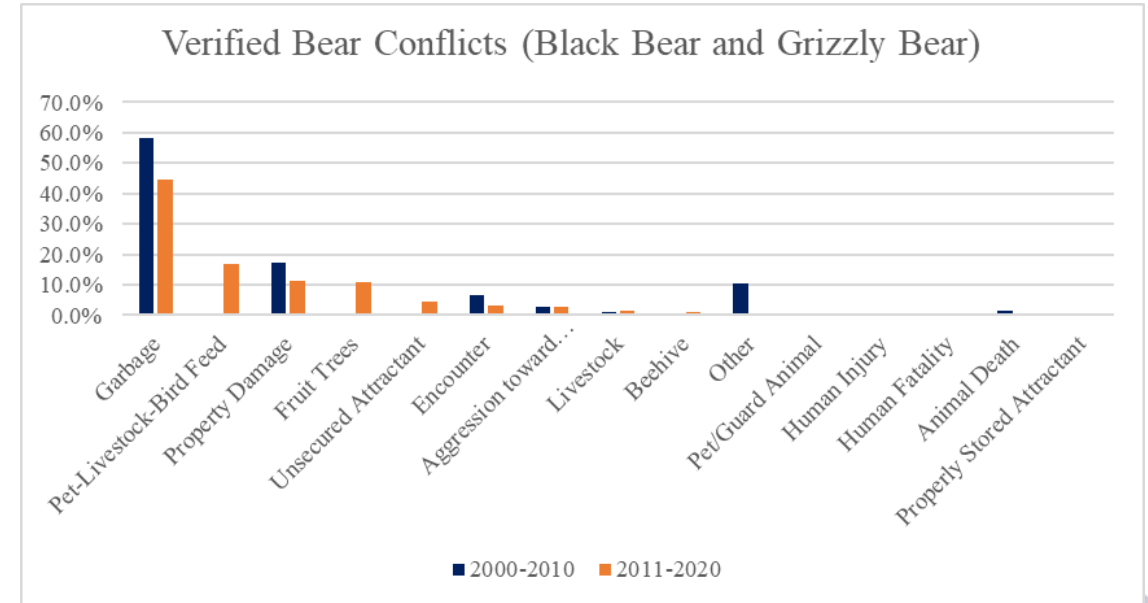
---

- Enforcement
  - Land Development Regulation (LDR) vs. ordinance
  - Must follow state law through abatement process
  - Most violations are handled administratively through a notice and are complaint driven
  - Full enforcement and compliance will come with time and support from the community and require local outreach and education



# Stakeholder Involvement


- Planning Commission Public Meetings
- WY Game and Fish Department –
  - 2011-2020 Bear Conflicts:
    - 44.% garbage
    - 17% Pet/Livestock/Bird feed
    - 11% Fruit Trees & Property Damage



Source: WY Game and Fish Department


# Summary of Key Changes

---

- Prohibition of feeding for *all* wildlife, not just the listed species in the current section which are – antelope, bighorn sheep, deer, elk, moose, mountain goats, bobcats, black bears grizzly bears, mountain lions, lynx, wild bison, wolves, coyotes, foxes and racoons.
  - Bird feeders shall be unavailable to wildlife at all times of the year.
  - Ornamental non-native fruit bearing trees, not harvested for food, shall not be planted. Existing ornamental, non-native fruit trees shall be managed with harvesting or fencing.
- 
- A decorative graphic at the bottom of the slide featuring a range of stylized mountains. The mountains are rendered in two colors: a light purple/lavender for the upper peaks and a muted green for the lower slopes and valleys. The style is simple and illustrative.


# Summary of Key Changes

---

- All trash shall be stored in an IGBC certified bear resistant container or dumpster countywide (exception is within Town of Jackson jurisdiction), eliminating Conflict Priority Areas 1 and 2.
  - Additional language for ensuring attractants are kept in bear resistant enclosures such as grease from food service, chicken coops and feed, apiaries, compost, livestock, and fish food.
  - Design requirements for bear resistant enclosures included in LDRs.
  - Establishing an effective date for the above regulations of July 1<sup>st</sup>, 2022.
- 
- A decorative graphic at the bottom of the slide featuring a range of stylized mountains. The mountains are rendered in two colors: a light purple/lavender for the upper peaks and a muted green for the lower slopes and valleys. The style is simple and illustrative.

# Specific Recommendations

---

- Funding needs and costs
  - Commercial dumpsters and construction waste
  - Trash properly stored in “self-locking” IGBC certified bear resistant containers
  - Publicly owned facilities
  - Education, outreach, and coordination
- 
- A decorative graphic at the bottom of the slide featuring a range of stylized mountains. The mountains are rendered in two colors: a light purple/lavender for the upper peaks and a muted green for the lower slopes and valleys. The style is simple and modern.

# Next Steps

---

- April 12<sup>th</sup> Board of County Commissioner Meeting
- <https://www.tetoncountywy.gov/AgendaCenter>

Questions?

Chris Colligan

Public Works Project Manager

(307) 732-8546

[ccolligan@tetoncountywy.gov](mailto:ccolligan@tetoncountywy.gov)

A decorative graphic at the bottom of the slide featuring a range of stylized mountains. The mountains are rendered in two colors: a light purple/lavender for the upper peaks and a muted green for the lower slopes and foreground. The style is simple and modern.