

Information, Education & Outreach Subcommittee

YES
Jackson, WY

April 2022



IE&O Subcommittee Members

Morgan Jacobsen - Montana Fish, Wildlife & Parks

Kylie Kembel - Montana Fish, Wildlife & Parks

Laurie Wolf - Montana Fish, Wildlife & Parks

Denise Germann -National Park Service

Morgan Warthin – National Park Service

Kimberly Johnston – People & Carnivores

Kyle Garrett – Wyoming Game and Fish Department

Danielle Oyler - Montana Fish, Wildlife & Parks (Chair)

IGBC IE&O Funding

2022

Total funding of about \$44,000 available for all 5 ecosystems

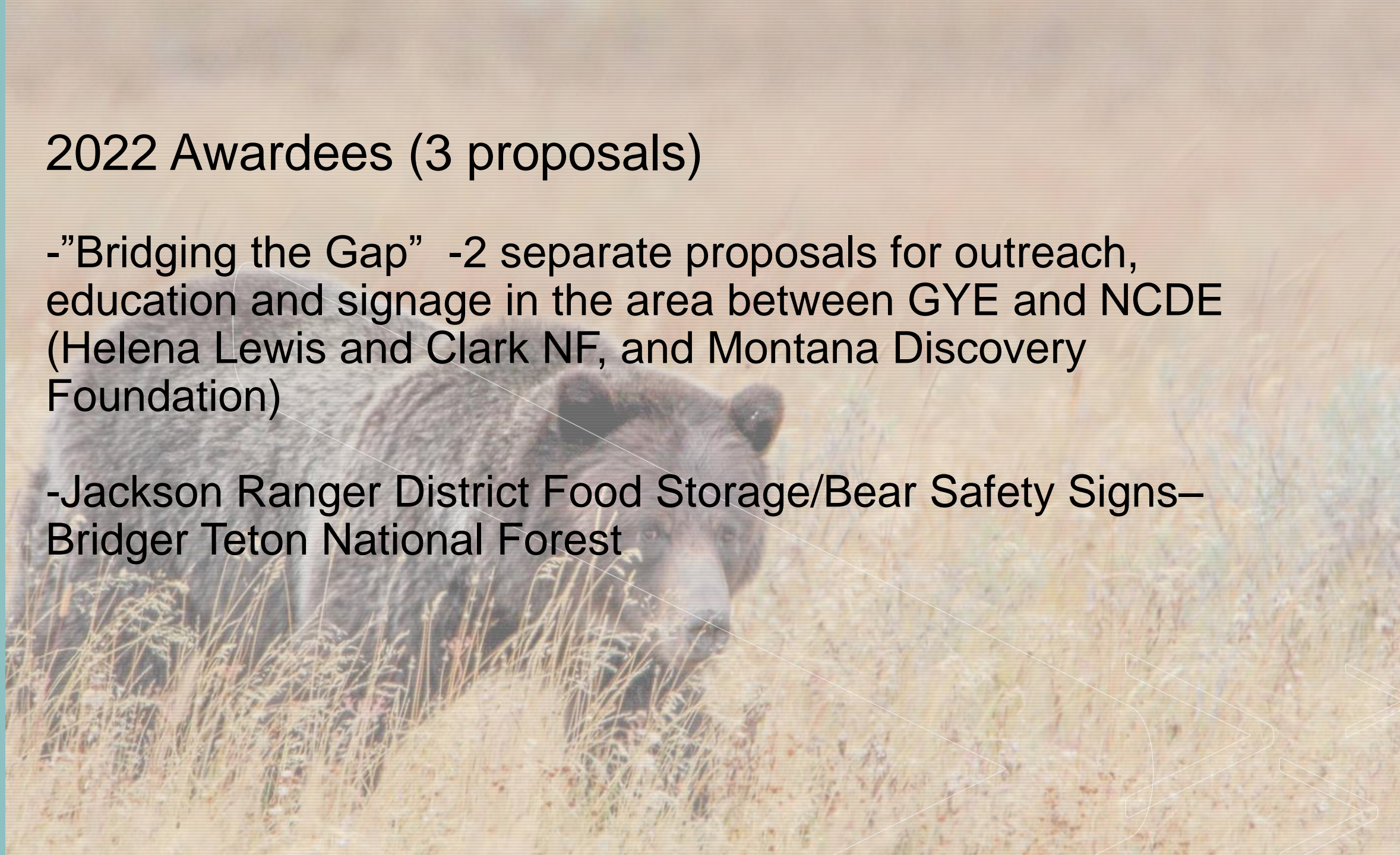
In GYE- IE&O subcommittee reviewed 8 proposals

19 proposals in total for all ecosystems, requesting about \$89,000

2022 Awardees (3 proposals)

- "Bridging the Gap" -2 separate proposals for outreach, education and signage in the area between GYE and NCDE (Helena Lewis and Clark NF, and Montana Discovery Foundation)

- Jackson Ranger District Food Storage/Bear Safety Signs—
Bridger Teton National Forest



A brown bear is shown in a field of tall, dry grass. The bear is looking towards the right. The image has a light beige overlay, and there are some faint white lines in the bottom right corner.

2023 Projects?

- Apply in October 2022
- Minimum \$2,500
- See website for full details

Outreach Updates

- Communications about bear awareness : Press releases, bear safety trainings, demonstrations, bear safety videos, hunting regs, websites, hunter FAQs, new brochures, bear trunks, library bear trunks
- In Montana, mostly GYE and between GYE and NCDE, we (USFS, FWP) contacted over 13,000 people at presentations, events, and patrols.

IGBC Bear Smart Community Program

Program Goal: The overall goal of the program is to support collaborative community-based human-bear strategies that benefit both people and bears by reducing conflicts and improving human safety in areas where people and bears share the landscape.

Criteria: There are four criteria that need to be met before a committee can receive IGBC Bear Smart Community Certification.

1. *Establish a Bear Smart Committee:* The formation of a committee to guide the community's efforts is fundamental to the community's success with this initiative. The committee should represent the community, and is meant to be a collaborative, community-based group that operates on consensus.
2. *Complete a Bear Smart Community Assessment:* The overall goal of the assessment is to identify current and potential risks for human-bear conflicts within the community. It is an opportunity for the community to compile pertinent data to guide future work and reflect on the challenges the community faces as they work towards finding ways to share the landscape with bears.
3. *Develop a Bear Smart Community Plan:* The Community Plan is the guiding document for the community's Bear Smart efforts. Plans will be unique to each community and will represent the agreed upon path forward for improving human safety, decreasing and preventing conflicts, and sharing the landscape with bears.
 - 3a. *Review the Community Plan with an IGBC Bear Smart Advisor:* Submitting a draft plan will indicate the community's intent to apply for IGBC Bear Smart Certification and will provide an opportunity to receive feedback on the plan prior to implementation.
4. *Implement the Bear Smart Community Plan:* The final step required before applying for IGBC Bear Smart Certification is to implement the plan developed in Criterion 3.

