



IGBC Bear Smart Community Program

BEAR SMART WORKING GROUP

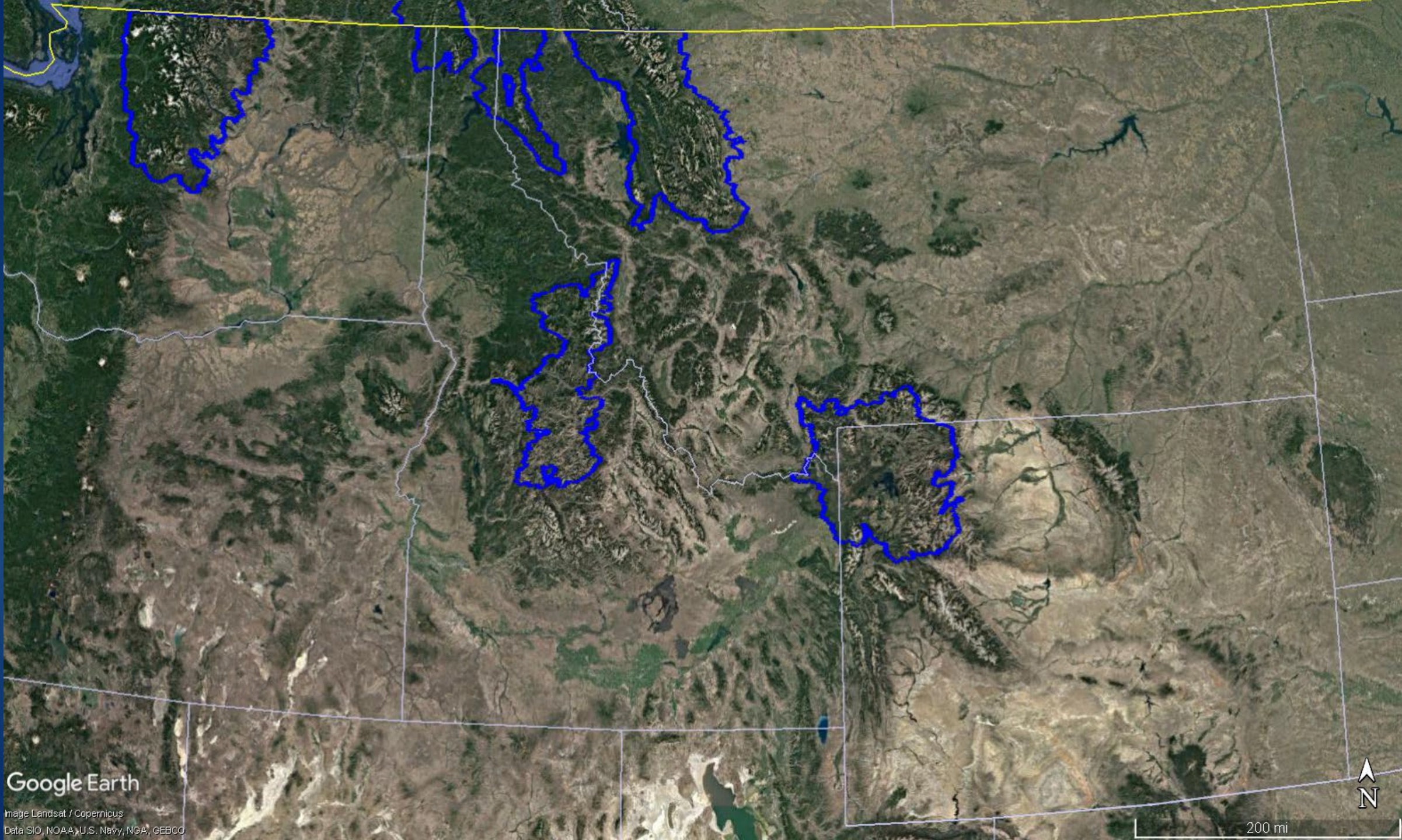


Google Earth

Image Landsat / Copernicus
Data SIO, NOAA, U.S. Navy, NGA, GEBCO



200 mi

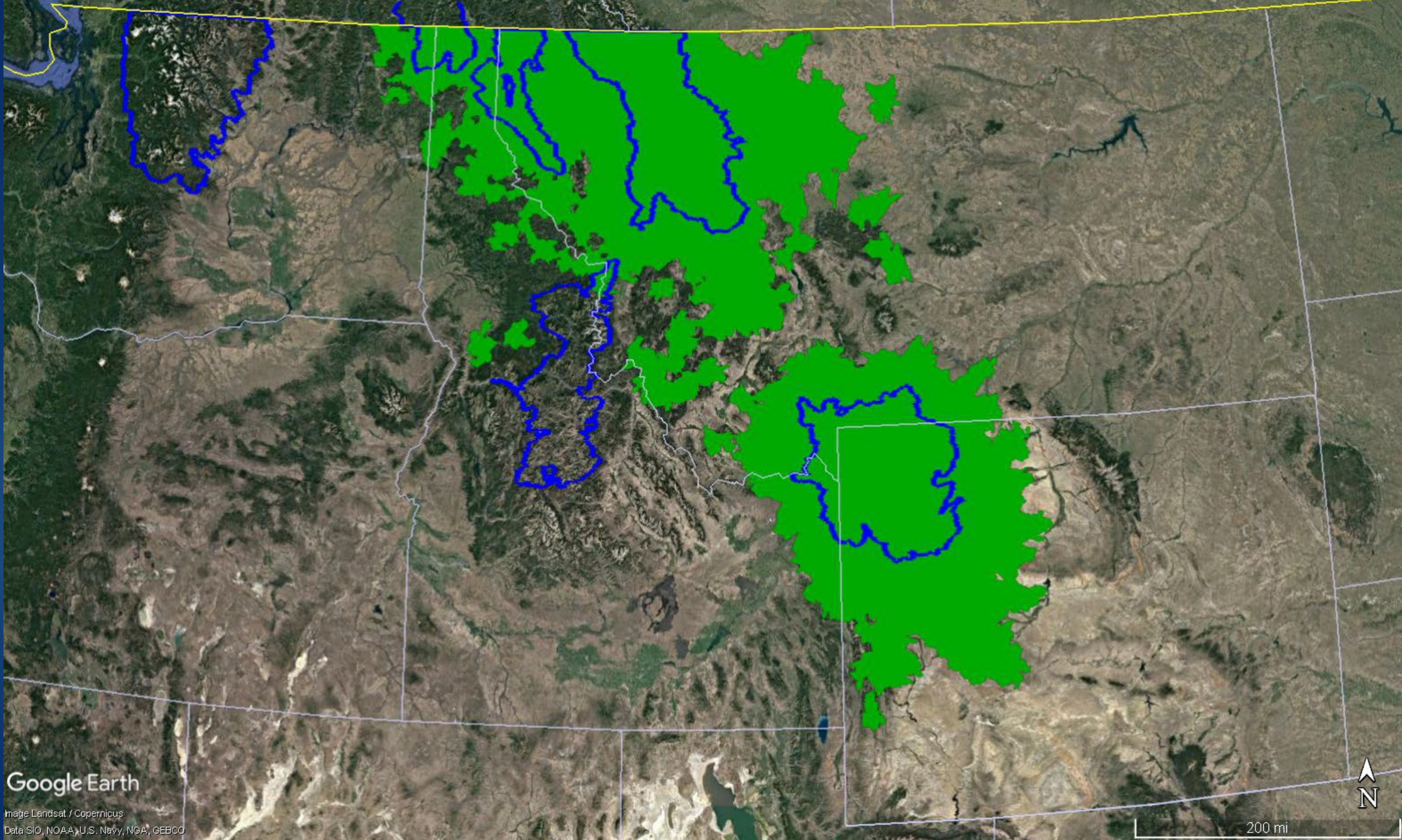


Google Earth

Image Landsat / Copernicus
Data SIO, NOAA, U.S. Navy, NGA, GEBCO



200 mi

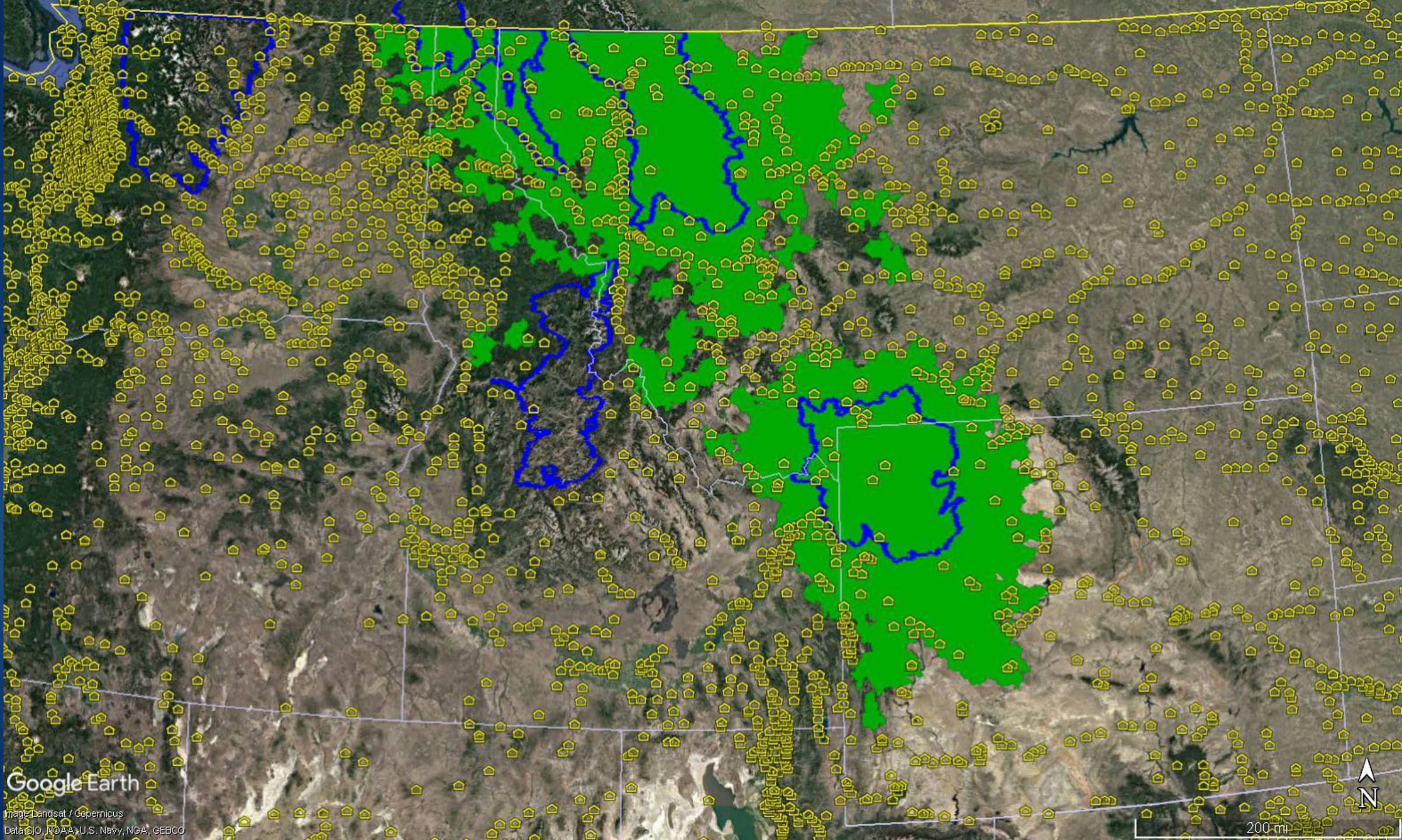


Google Earth

Image Landsat / Copernicus
Data SIO, NOAA, U.S. Navy, NGA, GEBCO



200 mi



Google Earth

Image Landsat / Copernicus

Data © NOAA, U.S. Navy, NGA, GEBCO

200 mi

N

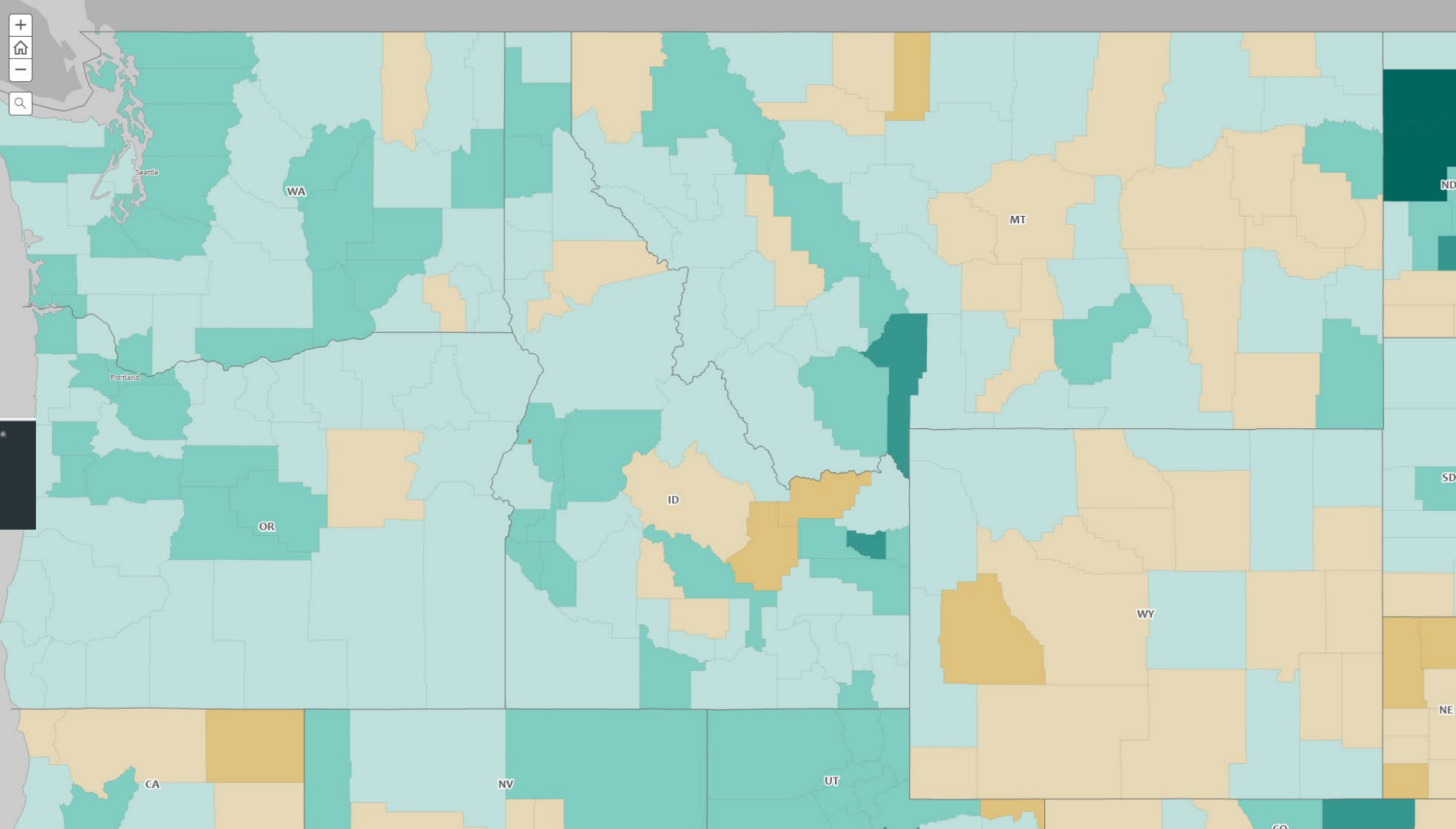
This map shows the percent change in total population from the 2010 Census to the 2020 Census at the state and county levels. Zoom in to see county-level data. Click on the map to learn more.

Legend
State (or state equivalent) boundary
County (or county equivalent) boundary

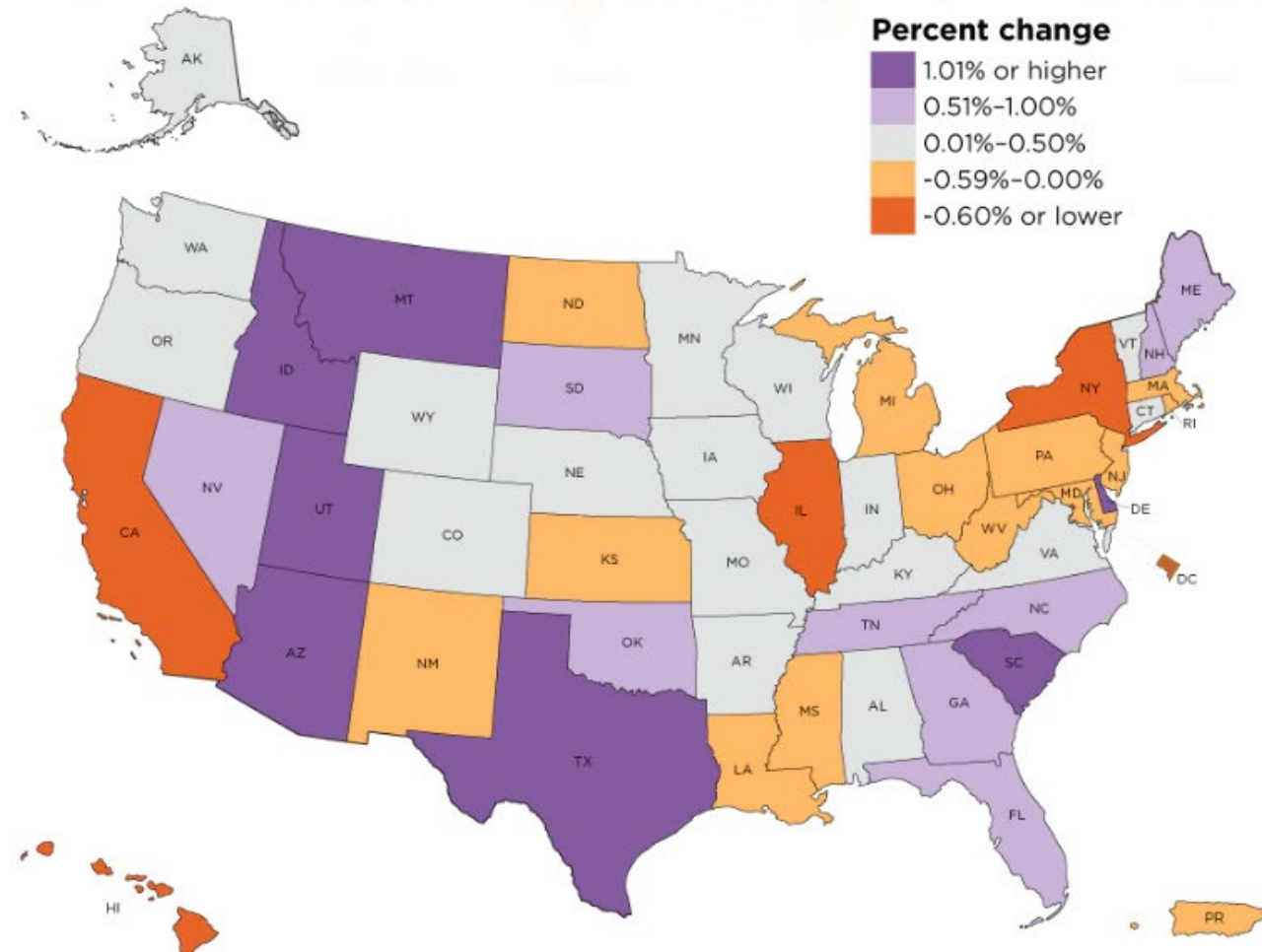
Percent change by county (or county equivalent)

- Gain of 60.0 or more
- 30.0 to 59.9
- 10.0 to 29.9
- 0.0 to 9.9
- 9.9 to -0.1
- 29.9 to -10.0
- Loss of 30.0 or more

U.S. percent = 7.4



Population Change for States (and Puerto Rico) From July 2020 to July 2021



Virginia City, Montana



Bear Smart Working Group

- ▶ Andrea Morehouse, Writer/Editor
- ▶ IGBC IEO Subcommittee
 - ▶ Lori Roberts, Danielle Oyler, Dillon Tabish, Denise Shultz, Christy Johnson-Hughes, Jennifer Bruns, Kim Annis
- ▶ Kim Johnson, People and Carnivores
- ▶ Jeremey Nicholson, Idaho Fish and Game
- ▶ Kyle Garrett, and Dan Thompson, Wyoming Game and Fish
- ▶ Mike Badry, British Columbia
- ▶ David Diamond, IGBC Executive Director
- ▶ Kris Inman

Bear Smart Community Program Goal

“Overall goal of the program is to support collaborative community-based strategies that benefit both people and bears by reducing conflict and improving human safety in areas where people and bears share the landscape.”

Bear Smart Community Program

Criteria 1

- ▶ Establish a Bear Smart Committee
 - ▶ Members must represent the community
 - ▶ Work Collaboratively



Bear Smart Community Program

Criteria 2

- ▶ Complete a Bear Smart Community Assessment
 - ▶ Community Description
 - ▶ Bear Population
 - ▶ Habitat and Wildlife Corridors
 - ▶ History of Human-Bear Interactions
 - ▶ Community Attractants
 - ▶ Education And Outreach Efforts
 - ▶ Solid Waste Management
 - ▶ Community Development
 - ▶ Enforcement
 - ▶ Human Safety and Community Attitudes

Bear Smart Community Program

Criteria 3

- ▶ Develop a Bear Smart Community Plan
 - ▶ Human Safety and Community Attitudes
 - ▶ Attractant Management
 - ▶ Education and Outreach
 - ▶ Solid Waste Management
 - ▶ Enforcement
 - ▶ Evaluation and Monitoring
 - ▶ Timeline
 - ▶ Budget

Bear Smart Community Program

Criteria 4

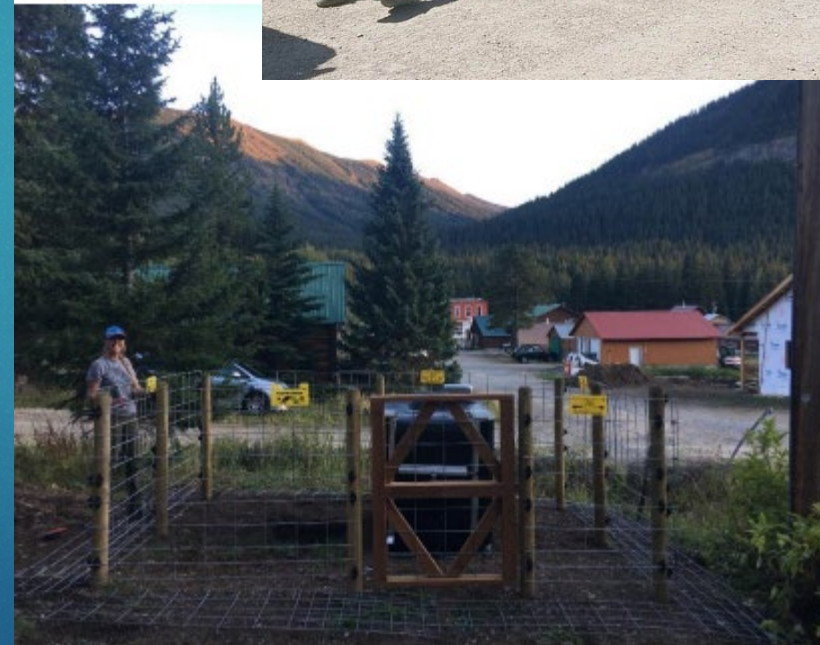
- ▶ Implement the Bear Smart Community Plan
 - ▶ Move forward and do good things.



Republic Services offers bear resistant trash cans.



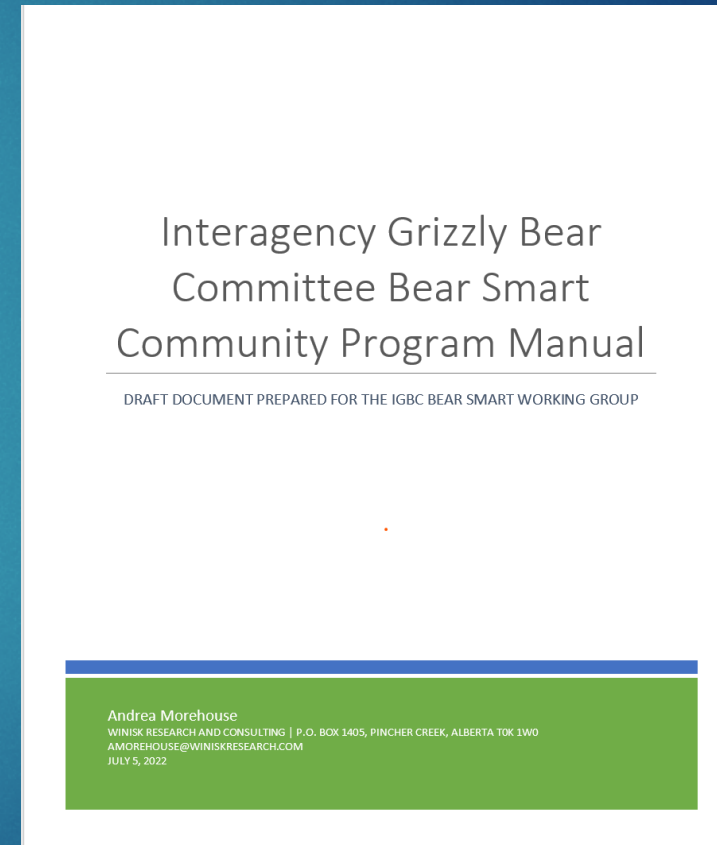
Swan Valley Bear Resources



Defenders of Wildlife

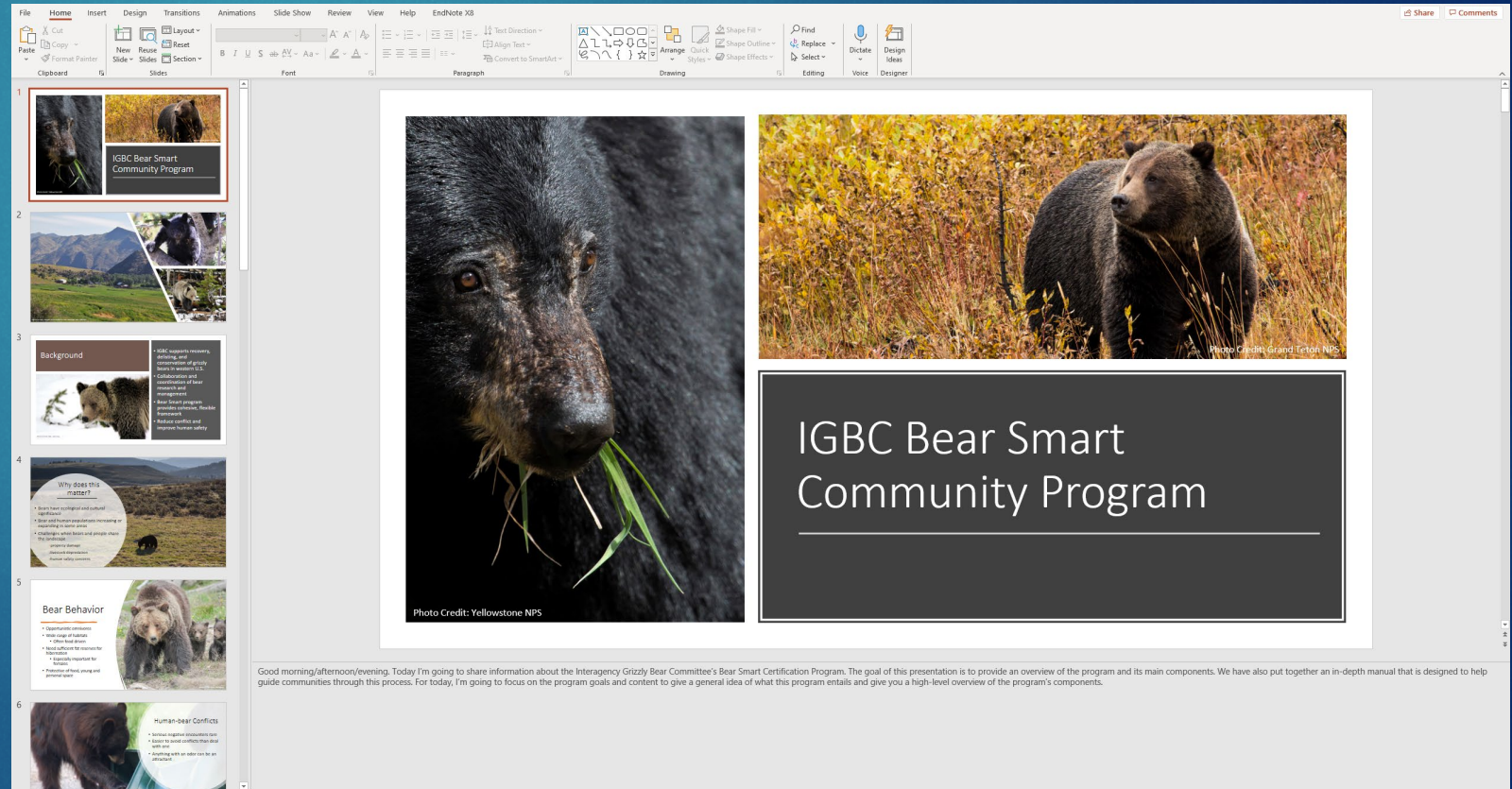
Providing to Communities

- ▶ Interagency Grizzly Bear Committee Bear Smart Community Program Manual
 - ▶ Bear Behavior and Conflict Information
 - ▶ Program Criteria
 - ▶ Certification Process???
 - ▶ References
 - ▶ Template and Examples
 - ▶ Bear Smart Community Assessment
 - ▶ Bear Smart Community Plan
 - ▶ Surveys
 - ▶ Assessment
 - ▶ Bear Smart Program



Providing to Communities

- ▶ IGBC Bear Smart Community Program PowerPoint
 - ▶ Explains the importance of the Bear Smart Program
 - ▶ Program Criteria Overview
 - ▶ Certification Details??



Good morning/afternoon/evening. Today I'm going to share information about the Interagency Grizzly Bear Committee's Bear Smart Certification Program. The goal of this presentation is to provide an overview of the program and its main components. We have also put together an in-depth manual that is designed to help guide communities through this process. For today, I'm going to focus on the program goals and content to give a general idea of what this program entails and give you a high-level overview of the program's components.

Providing Communities

- ▶ IGBC Bear Smart Community Program Brochure
 - ▶ Goal of the Program
 - ▶ Criteria
 - ▶ Certification???

DRAFT PREPARED BY THE IGBC BEAR SMART COMMUNITY WORKING GROUP JUNE 2022



IGBC Bear Smart Community Program

Communities whose residents live, work, and/or recreate in areas inhabited by bears face a unique set of challenges. Conflicts between people and bears can result in economic impacts as well as risks to human safety, which in turn have negative consequences for individuals, communities, and bears. Proactive approaches can help reduce the potential for future conflicts. The intent with this program is to provide a cohesive, flexible framework that can be used by a variety of communities across the western United States to reduce or mitigate human-bear conflicts and decrease risks to human safety, thereby benefiting both bears and people.



The overall goal of the program is to support collaborative community-based strategies that benefit both people and bears by reducing conflicts and improving human safety in areas where people and bears share the landscape.

Criteria:

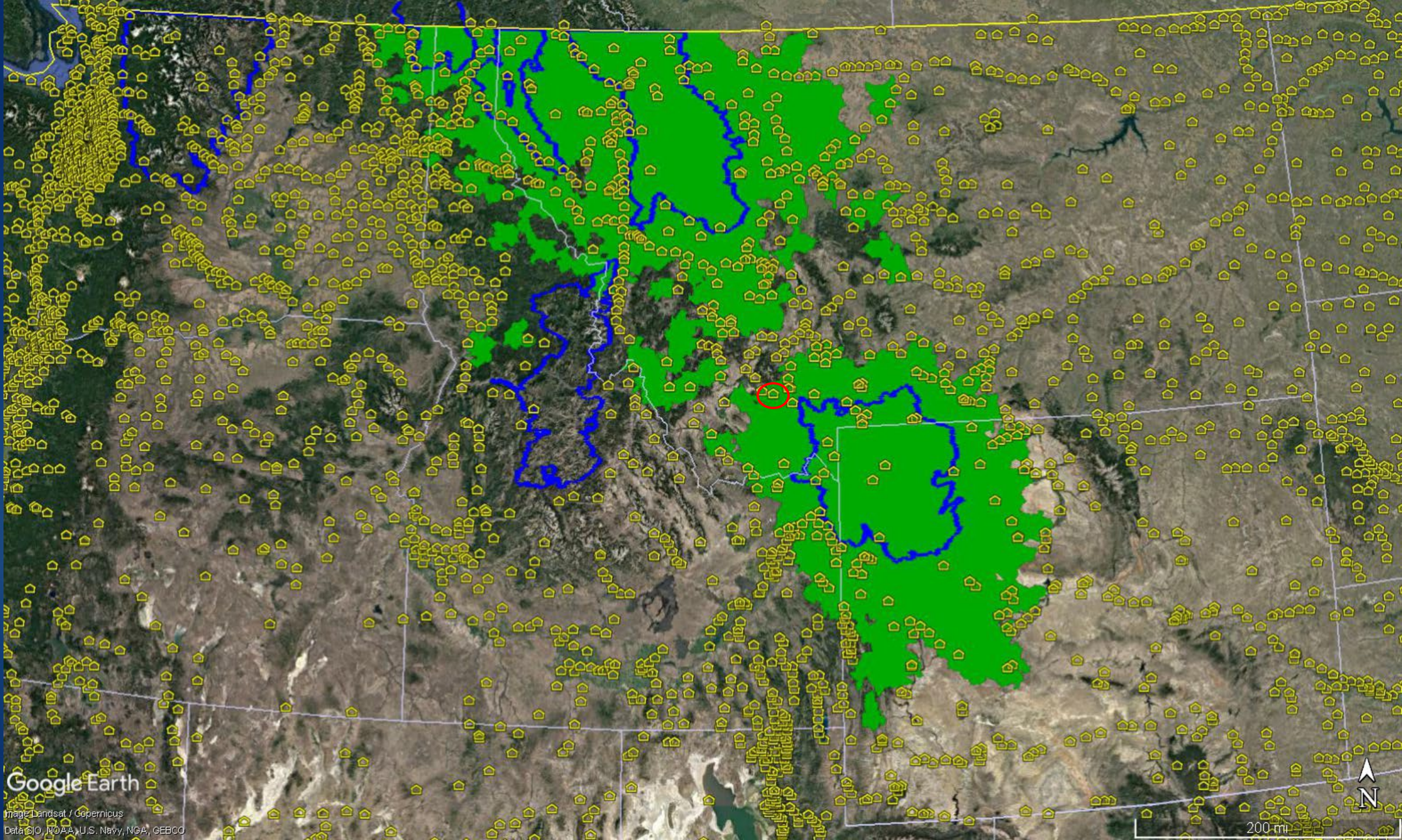
1. *Establish a Bear Smart Committee:* The formation of a committee to guide the community's efforts is fundamental to the community's success with this initiative. The committee should represent the community, and is meant to be a collaborative, community-based group that operates on consensus.
2. *Complete a Bear Smart Community Assessment:* The overall goal of the assessment is to identify current and potential risks for human-bear conflicts within the community. It is an opportunity for the community to compile pertinent data to guide future work and reflect on the challenges the community faces as they work towards finding ways to share the landscape with bears.
3. *Develop a Bear Smart Community Plan:* The Community Plan is the guiding document for the community's Bear Smart efforts. Plans will be unique to each community and will represent the agreed upon path forward for improving human safety, decreasing and preventing conflicts, and sharing the landscape with bears.
4. *Implement the Bear Smart Community Plan:* The final step required before applying for IGBC Bear Smart Certification is to implement the plan developed in Criterion 3.

Certification:

The IGBC has designated two levels of certification – IGBC Bear Smart Community and Gold Star IGBC Bear Smart Community. A community is eligible for certification once they can show that they have made substantial demonstrable progress towards implementing all aspects outlined in the community plan. A community is eligible for "Gold Star" status once they have fully implemented the bylaw/enforcement component of their plan.

See www.igbconline.org for further information

Photo Credit: Wyoming Game and Fish



Google Earth

Image Landsat / Copernicus

Data © NOAA, U.S. Navy, NGA, GEBCO

Questions and Discussion

