

WYOMING GAME AND FISH DEPARTMENT GRIZZLY BEAR CONFLICT UPDATE 2022



Brian DeBolt
Large Carnivore Conflict
Coordinator



Role of Wyoming Game and Fish

- Maintain viable populations of large carnivores on the landscape using a science based adaptive approach
- Include public desires and attitudes in setting harvest objectives and making management decisions
- Proactively manage to mitigate human/wildlife conflicts
- Provide information and education on large carnivore management and safety

All Connected

- Nothing we do is mutually exclusive:
 - Monitoring and conflict resolution data used to better understand and manage the species
 - Proactive efforts and educational programs within Bear Wise Wyoming
 - State, local, national and global reach
 - Team approach, bolstered by public support

Large Carnivore Management

- WIDE SPECTRUM of viewpoints with large carnivores; more polarity depending on species – but *ALWAYS* opinions



GYE Grizzly Bears

- Perhaps the most studied wildlife population on earth
- Long-term dataset, expertise and experience
- Epitomize *conservation success story*



Monitoring → Management

- Insight into yearling cattle depredation by large carnivores



Increasing Conflict Potential



Management of Large Carnivore Conflicts Requires a Significant Amount of Attention **Thanks to Everyone who Contributes!**

- CLINT ATKINSON
- MIKE BOYCE
- LUKE ELLSBURY
- PHIL QUICK
- SCOTT STINGLEY



Human-Wildlife Conflicts

- Interactions between humans and wildlife that results in property damage, agriculture damage, or public safety issues (aggression, disease)
- Management of human-wildlife conflicts
 - Promotes tolerance and Department support
 - Human safety is paramount

Data includes the minimum of verified, legitimate conflicts

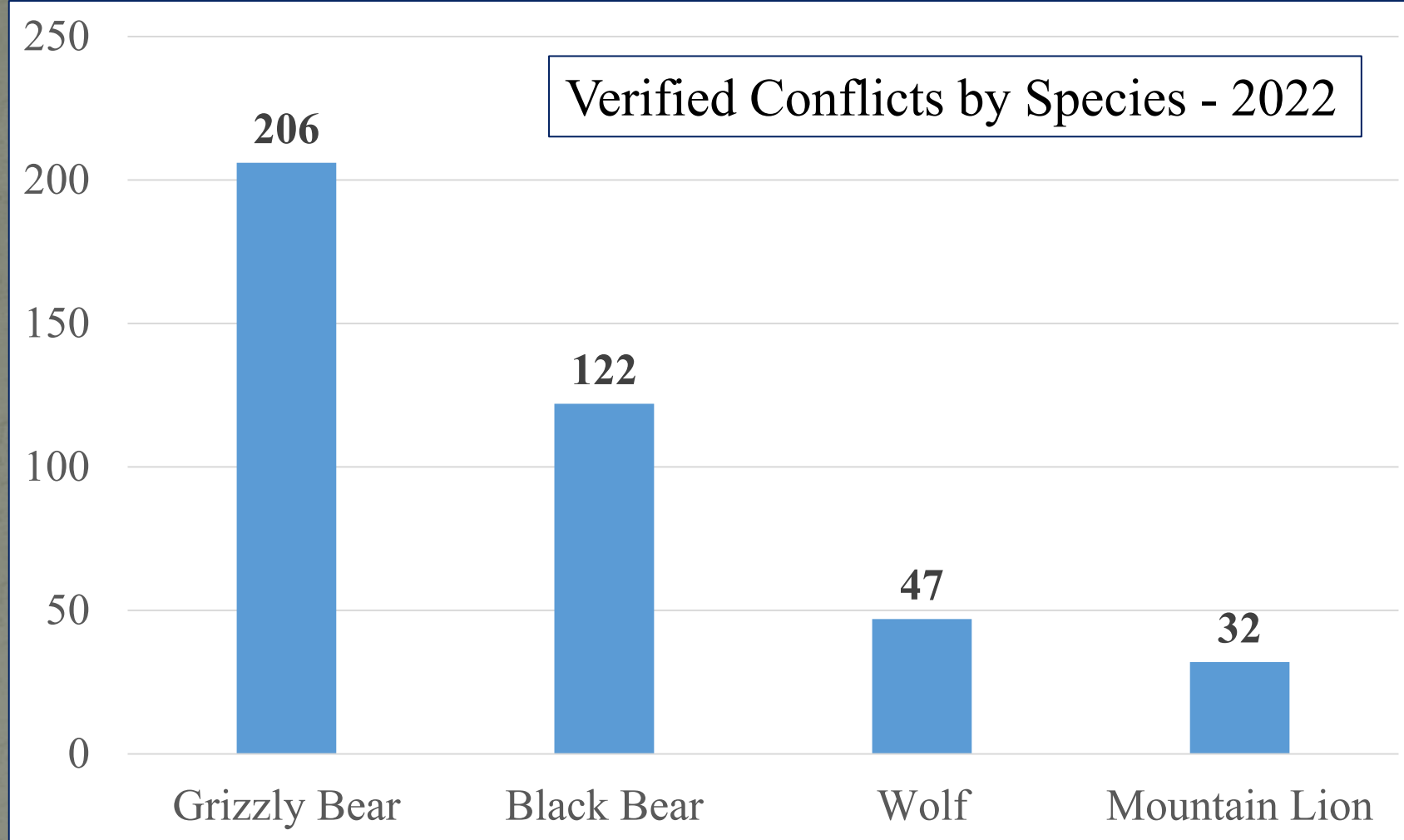


Sighting/ Encounter



Conflict



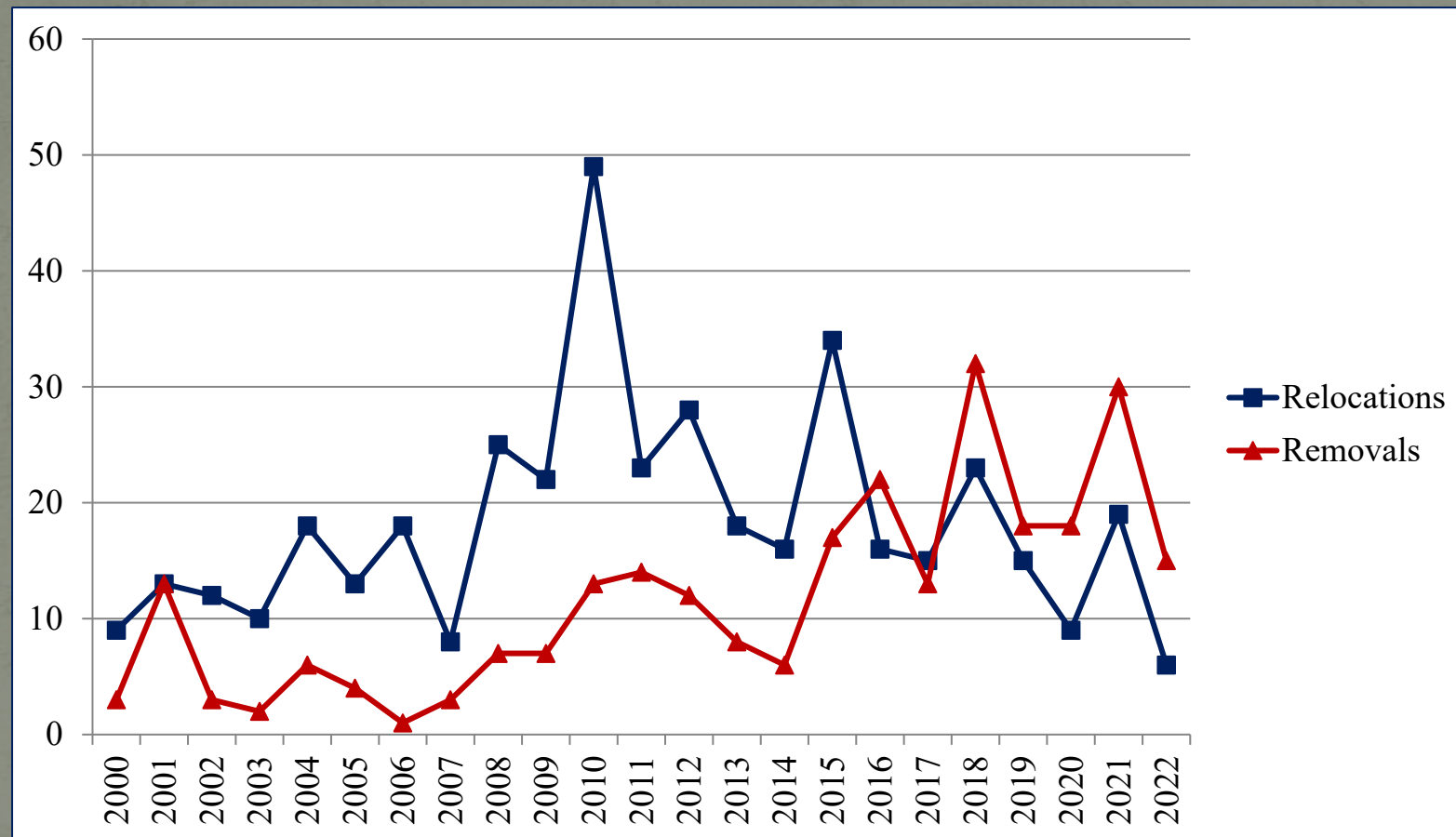


407 Total

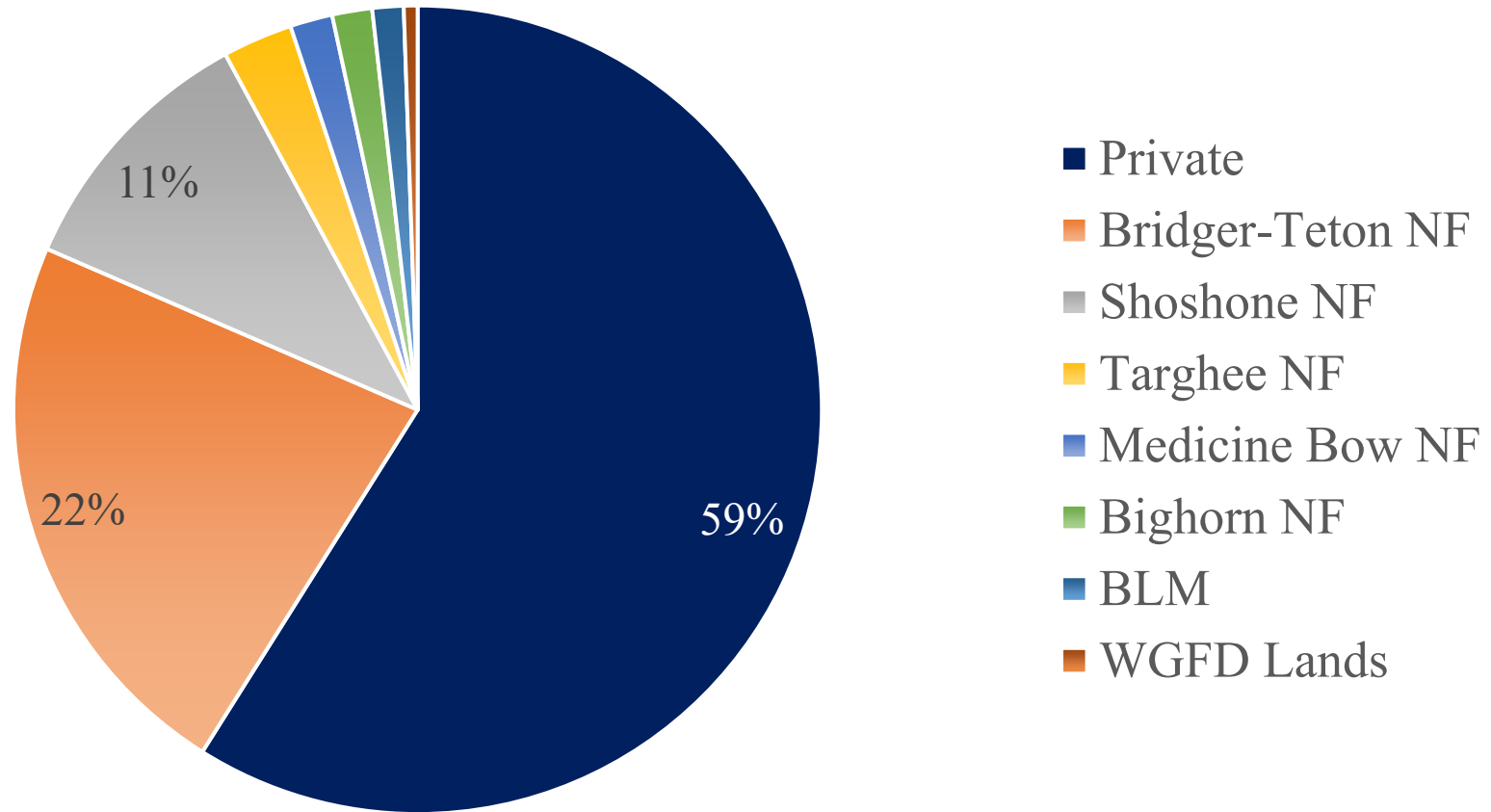


206 Total

“Hands-on” Management Actions – Grizzly Bears



Conflict Breakdown by Jurisdiction



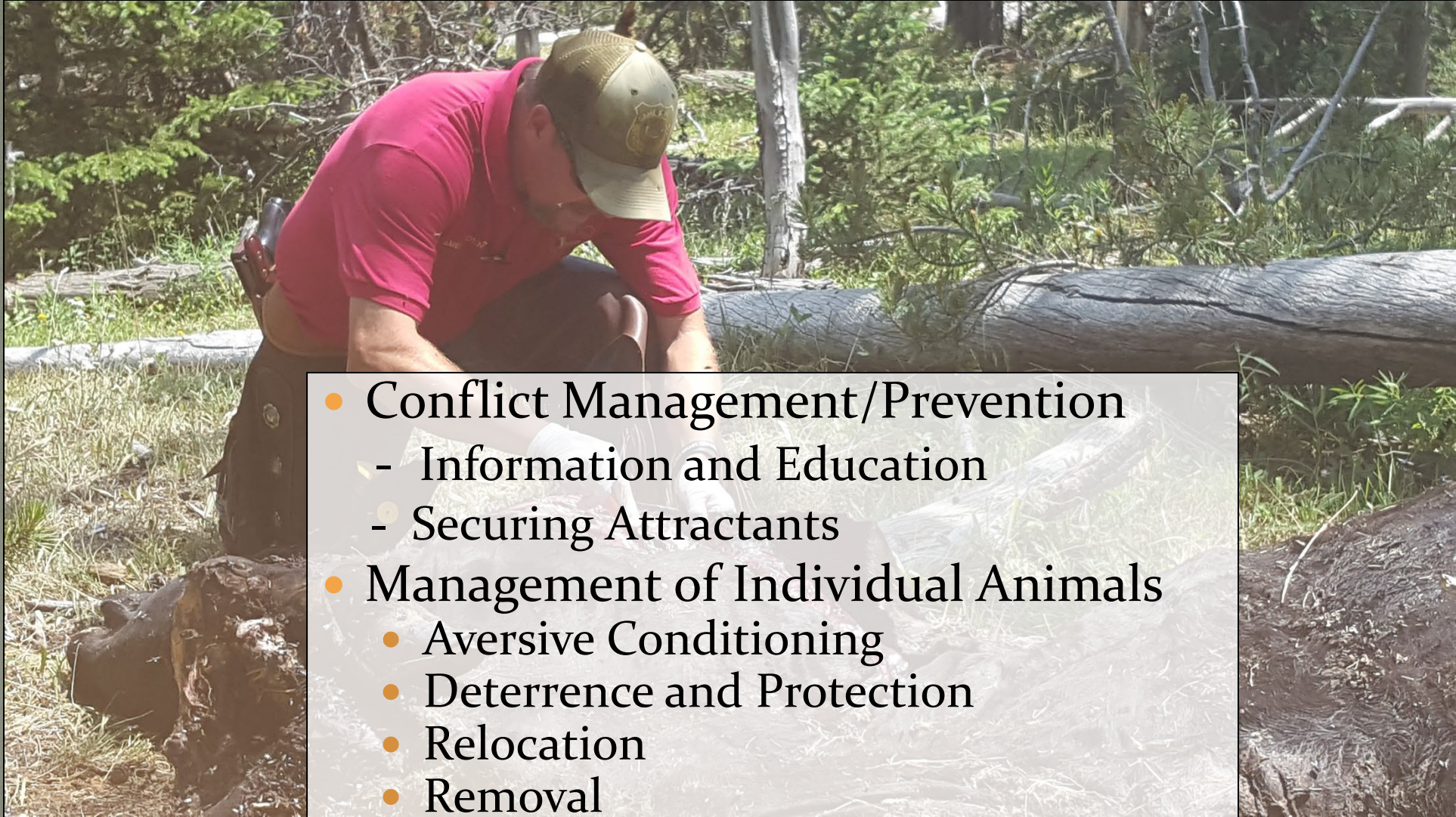
What Drives Annual Conflict Numbers?

Social Tolerance
Real and Perceived Threats



Abundance of
Natural Foods

Field Response Program



- Conflict Management/Prevention
 - Information and Education
 - Securing Attractants
- Management of Individual Animals
 - Aversive Conditioning
 - Deterrence and Protection
 - Relocation
 - Removal
- Compensation Programs

Focus on Prevention

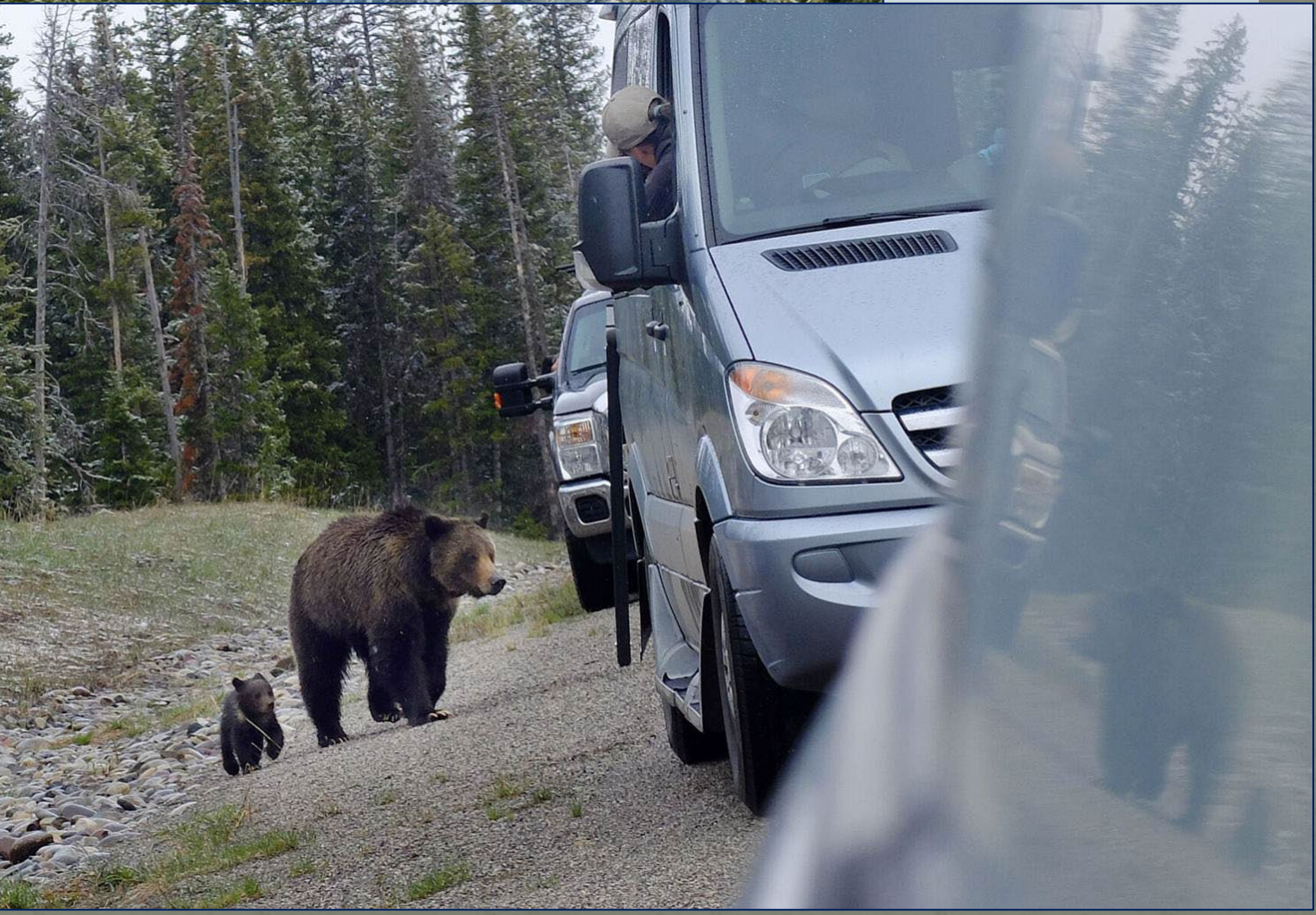


Electric
Fences





Securing Garbage

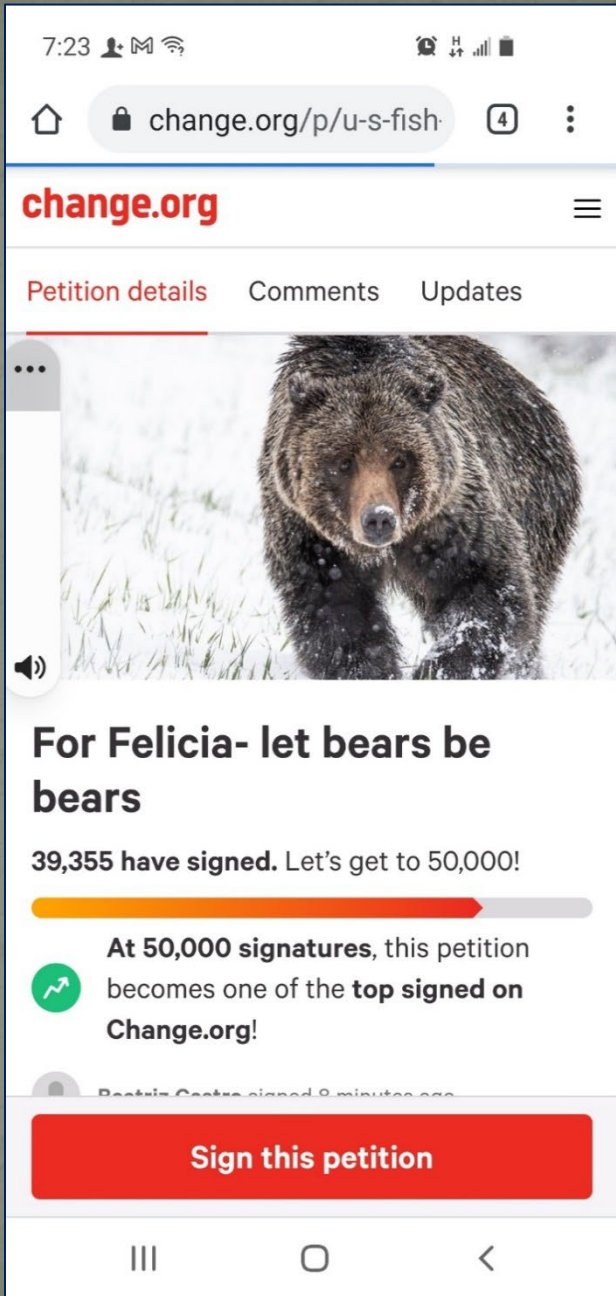






Disruptive Stimuli





Habitat Conservation Programs/Land Use Planning

- Managing areas utilized by humans to reduce the potential for conflicts
- Ranches and farms
- Planned development



Damage Compensation Program (Livestock and Beehives)

Monetary compensation to
reimburse livestock owners

- Payment made at market value
- Payment for killed, injured and missing livestock; guard dogs (Verified Damage Only)



When Other Options are Exhausted

- We attempt capture if the situation warrants
- We relocate an animal if applicable
- Some animals have to be removed from the population



Predator Attack Team (PAT)

- Trained personnel to provide a professional response for wildlife attacks of humans
- Team approach



Social Media ---The Newest Conflict Frontier?



- False perceptions of State Management
- Humans are loving animals to death quite literally

Bear Wise Wyoming – Worldwide Outreach

- These proactive efforts and educational component serve as the foundation for grizzly bear management and maintaining large carnivores on the landscape



Google "Bear Wise Wyoming"

Conflict Resolution and Bear Wise Wyoming

- *A Reminder...(we've been around for awhile)...*
 - *From the first Grizzly Bear Annual Job Completion Report by Game and Fish for 2011:*

The Bear Wise Community Program is a proactive initiative that seeks to minimize human-bear

In 2005, the Department began implementation of the Bear Wise Community Program. Although the program's efforts were focused primarily in the Wapiti area, the Department initiated a smaller scale project in Teton County to address the increasing number of black and grizzly bear conflicts in the Jackson area. For the last 6 years, the Bear Wise Community Programs in both Cody and Jackson have deployed a multi-faceted education and outreach campaign in an effort to minimize human-bear conflicts and promote proper attractant management. Although a wide array of challenges remain and vary between communities, many accomplishments have been made and progress is expected to continue as Bear Wise efforts gain momentum.

waste management infrastructure.



Final Thoughts

- We are committed to maintaining and managing large carnivore populations on the landscape
 - Multi-layered approach to the ever-changing dynamics of wildlife in Wyoming
- Maintaining a vigilant conflict resolution, monitoring and outreach/education program is vital to carnivore management and human tolerance
- We will continue to answer the questions that are being asked to better understand large carnivores resulting in more effective management strategies



THANK
YOU!

