



NCDE Habitat Database Manager

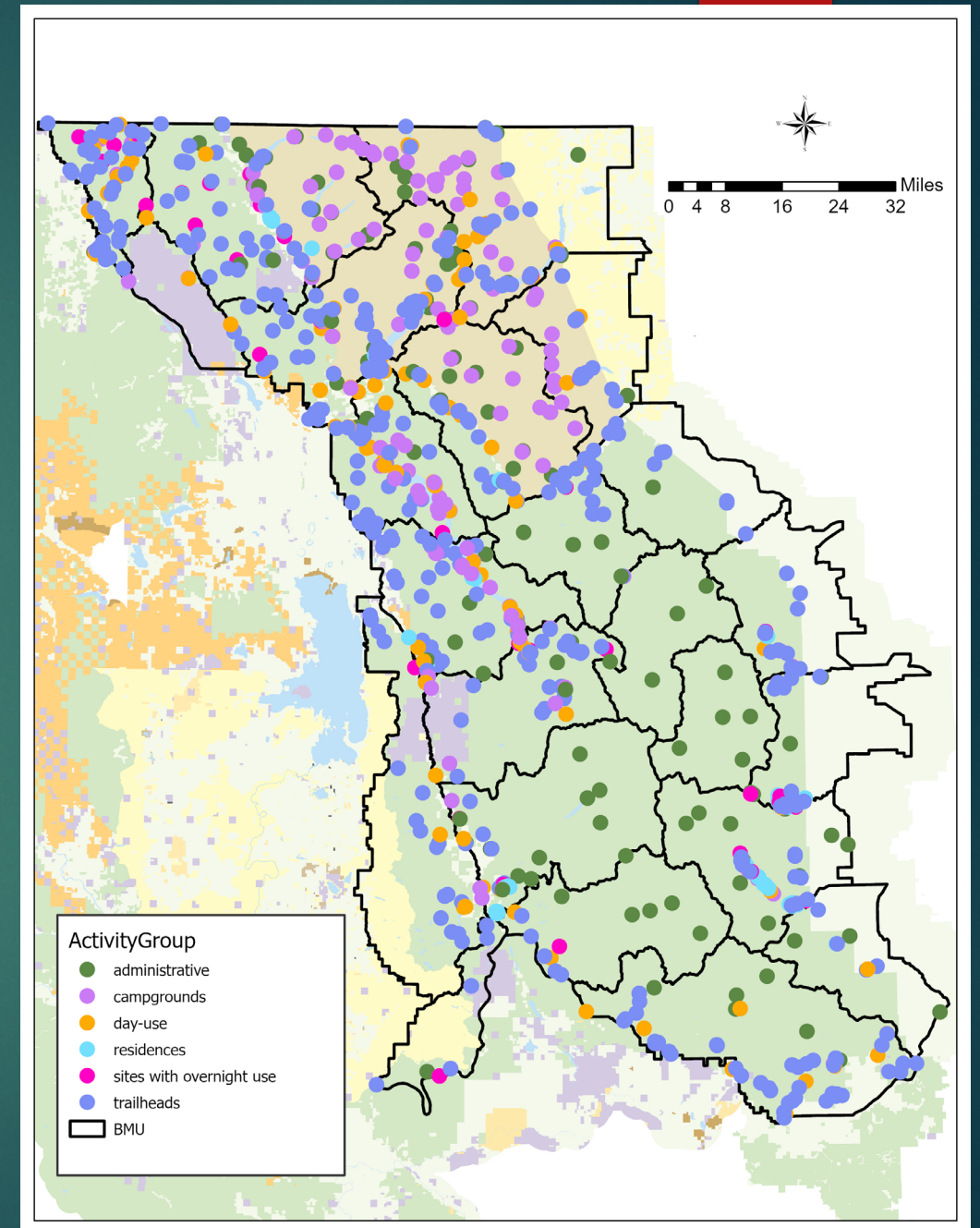
FY2023

2022 Developed Recreation Monitoring

The 2022 Developed Recreation monitoring is complete.

All 23 BMUs are meeting the standards.

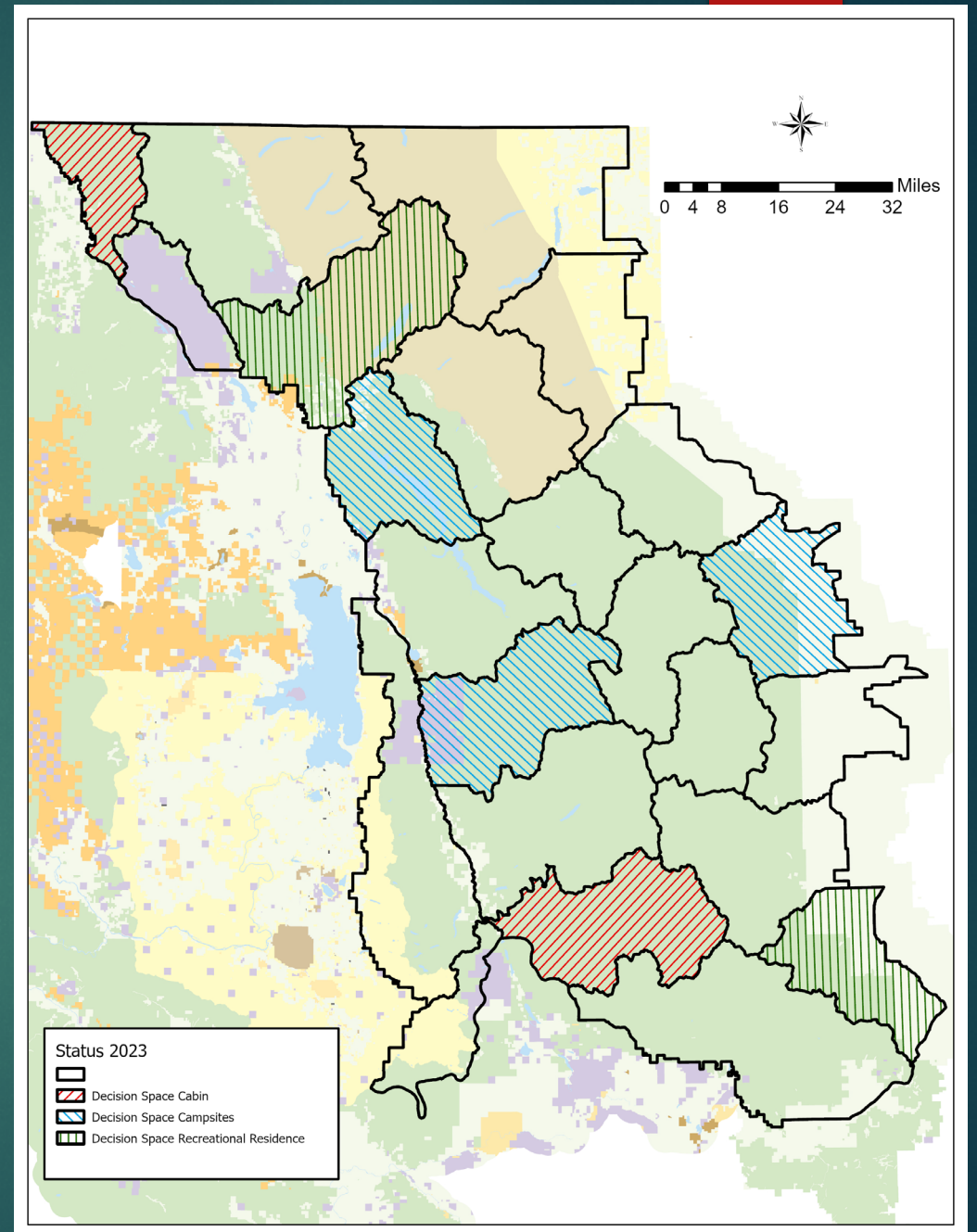
Both Glacier NP and Helena-Lewis & Clark NF did a thorough review with updates.



2022 Developed Recreation Monitoring

To date, there are 7 BMUs that have current numbers below baseline:

- 2 BMUs have a cabin each.
- 3 BMUs have campsite capacity available within campgrounds.
- 2 BMUs have recreational residences.



Questions.....?

Approval....?

2022 Grazing Monitoring

Changes from 2020 to 2022:

- Two allotments combined, no change in acres under allotment.
- One allotment was split. No change in acres under allotment.*
- MFWP cooperative land use agreements reviewed & updated.



MTPR photo

Questions.....?

Approval....?

Biennial Reports

- All reports are completed.

2017, 2019 and 2021 motorized access

2018, 2020 and 2022 developed recreation sites

2018, 2020 and 2022 grazing

- Reports are posted on the NCDE webpage. Scroll down to the policy, management & research reports section.

<https://igbconline.org/committees/northern-continental-divde/>



Thanks for your continued assistance.