

# Spring Research and Monitoring Update Northern Continental Divide Ecosystem 2022 Annual Results



Photo:  
Arthur Stephens

**Cecily Costello, Lori Roberts, Milan Vinks,  
Payton Adams, Jamie Jonkel, Eli Hampson, Jeffery Horn,  
Wesley Sarmiento, Justine Vallieres, John Waller, Erik Wenum, Chad White**

# Topics

Field Data Collection

Conservation Strategy Demographic Objectives

Management Summary





# 2023 Field Data Collection

## Capture

- Trend research: 24 (17F, 7M)
- Management or other research: 53 (22F, 31M)

## Radio-monitoring

- Trend research: 34 (27F, 7M)
- Management or other: 51 (34F, 17M)

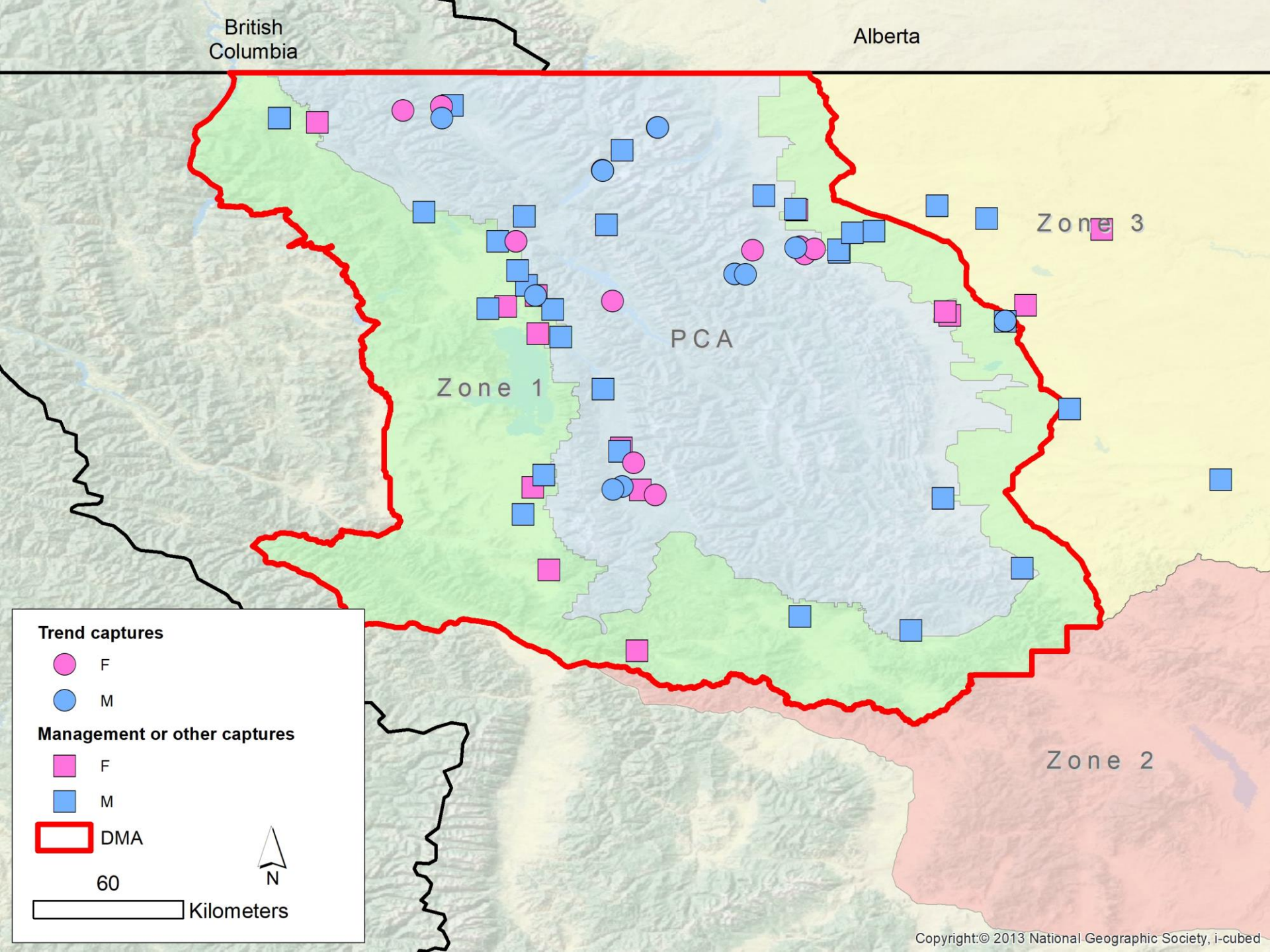
## Independent survival monitoring

- Trend research: 0 radioed deaths
- Management or other: 9 radioed deaths (3F, 6M)

## Reproductive monitoring with telemetry

- Reproductive status: 46 females (14 CB, 5 YR, 3 2YO, 24 None)
- Cub survival: 4 litters, 10 individuals (10 alive, 3 dead)
- Yearling survival: 2 litters, 4 individuals (2 alive, 2 dead)







# Documented Mortalities

## All zones, all age classes

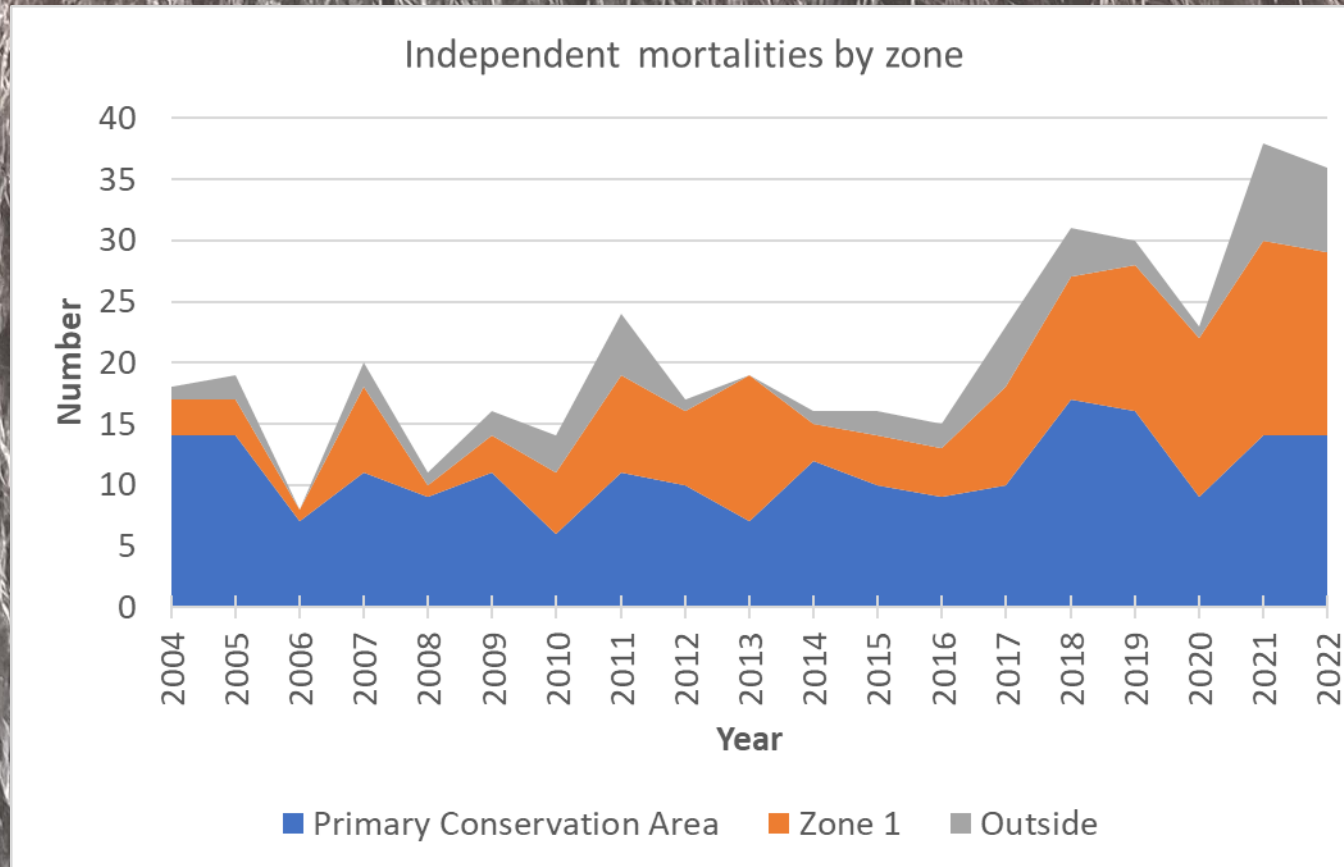
### Documented mortalities 2022

	Ageclass	Female	Male	Unknown sex	Total
Inside DMA	Dependent	3	7		10
	Independent	12	16	1	29
	Total	15	23	1	39
Outside DMA	Dependent	1	1	1	3
	Independent	4	5		9
	Total	5	6	1	12

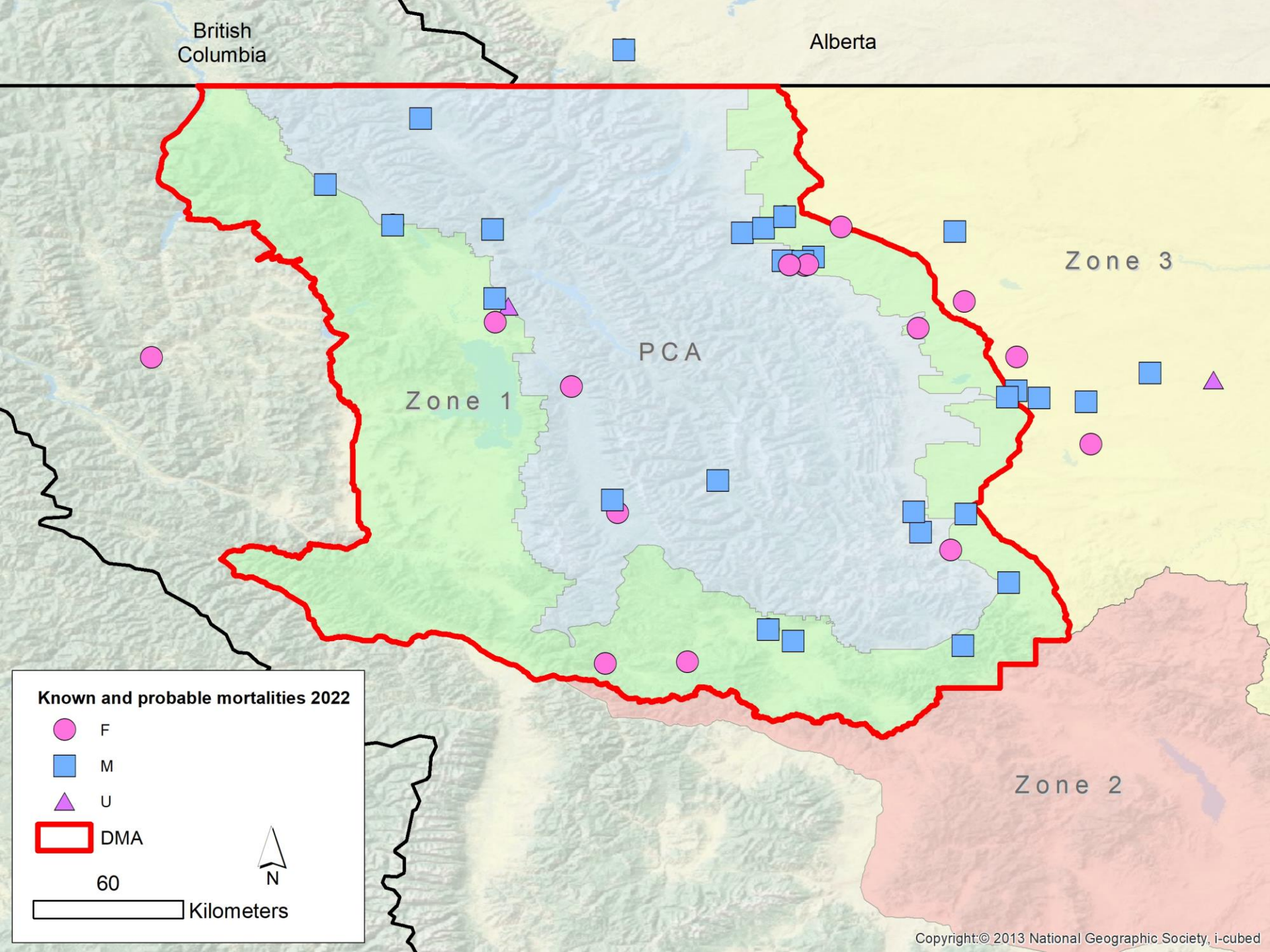


# Conservation Strategy Zone

## Independent bears only







British  
Columbia

Alberta

Zone 3

PCA

Zone 1

Zone 2

**Known and probable mortalities 2022**



F



M



U



DMA

60



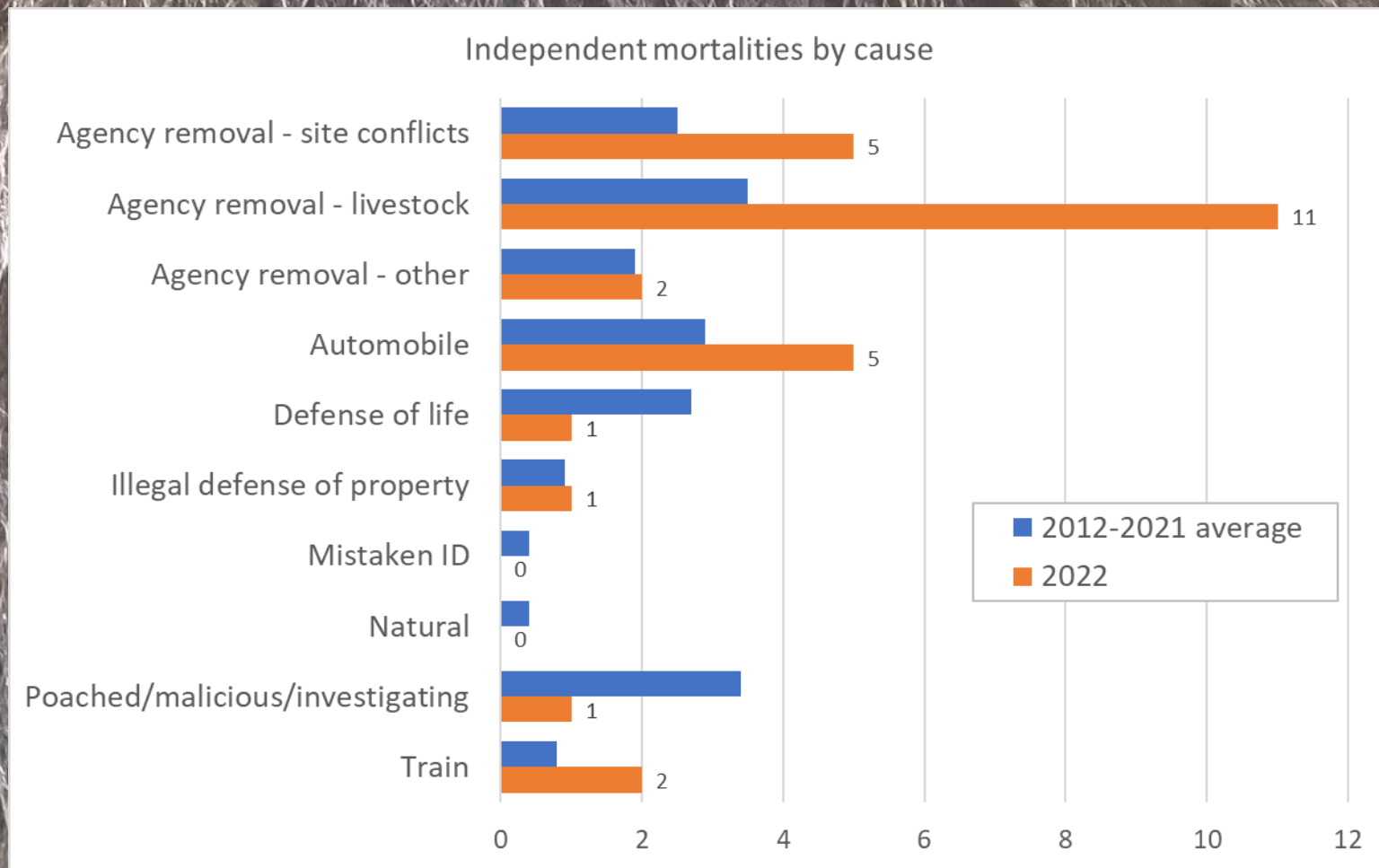
N

Kilometers



# Cause of Death

## Independent bears inside DMA



# Conservation Strategy Demographic Objectives

Occupancy thresholds - Maintain the documented presence of females with dependent offspring, at least every 6 years, in at least:

≥21 of 23 Bear Management Units of the PCA/Recovery Zone

≥6 of 7 Occupancy Units of Zone 1



British  
Columbia

Alberta

Zone 3

Zone 1

Zone 2



DMA

**Known occupied in 2022**



Yes



No

60

Kilometers



Murphy  
Lake

Upper North  
Fork Flathead

Northeast  
Glacier

Salish  
Connectivity  
Area

Stillwater  
River

Lower North  
Fork Flathead

Southeast  
Glacier

Lower Middle  
Fork Flathead

Blackfeet  
Reservation

Hungry Horse

Badger Two  
Medicine

Flathead  
Valley

Upper Middle  
Fork Flathead

Sullivan

Continental  
Divide

Birch Teton

PCA

Bunker

North Fork  
Sun River

Teton Sun  
River

Flathead  
Reservation

Big Salmon

South Fork Sun  
Beaver Willow

East Front

Mission Range

Upper South  
Fork Flathead

Dearborn  
Elk Creek

Ninemile  
Connectivity  
Area

Rattlesnake

Monture  
Landers Fork

South End



# Occupancy thresholds

Bear Management Unit (PCA)	2017	2018	2019	2020	2021	2022	6-year
Murphy Lake	×			×		×	×
Upper North Fork Flathead	×		×	×	×	×	×
Northeast Glacier	×	×	×	×	×	×	×
Stillwater River		×	×	×	×	×	×
Lower North Fork Flathead	×	×	×	×	×	×	×
Hungry Horse	×	×	×	×	×		×
Lower Middle Fork Flathead	×	×	×	×	×	×	×
Southeast Glacier	×	×	×	×	×	×	×
Sullivan	×	×	×	×	×	×	×
Upper Middle Fork Flathead	×	×				×	×
Badger Two Medicine	×	×	×	×		×	×
Mission Range	×	×	×	×	×	×	×
Bunker	×	×	×	×	×		×
Continental Divide				×		×	×
Birch Teton	×	×	×	×			×
Big Salmon		×	×	×	×	×	×
North Fork Sun River	×	×	×	×		×	×
Teton Sun River	×		×	×	×	×	×
Rattlesnake					×		×
Upper South Fork Flathead	×				×		×
South Fork Sun Beaver Willow	×	×	×	×	×	×	×
Monture Landers Fork	×		×	×	×	×	×
Dearborn Elk Creek	×		×	×	×	×	×



# Occupancy thresholds

Occupancy Unit (Zone 1)	2017	2018	2019	2020	2021	2022	6-year
Salish Connectivity Area	×	×	×	×	×	×	×
Flathead Valley	×	×	×	×	×	×	×
Flathead Reservation	×	×	×	×	×	×	×
Ninemile Connectivity Area		×	×	×			×
South End	×	×	×	×	×	×	×
East Front	×	×	×	×	×	×	×
Blackfoot Reservation	×	×	×	×	×	×	×

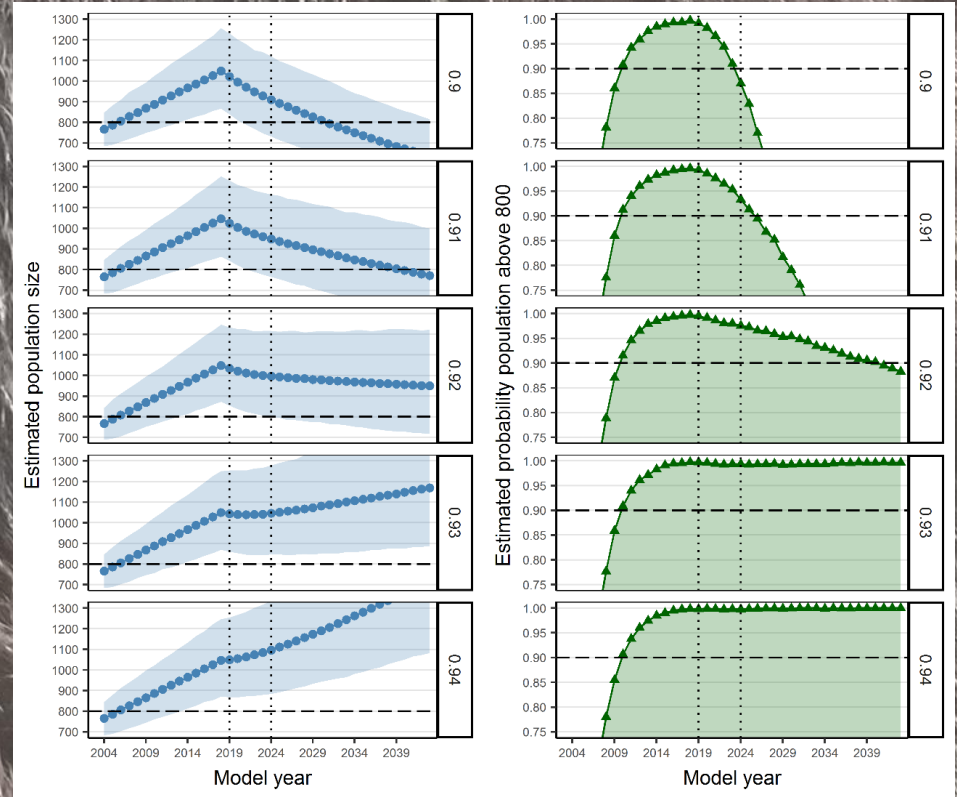
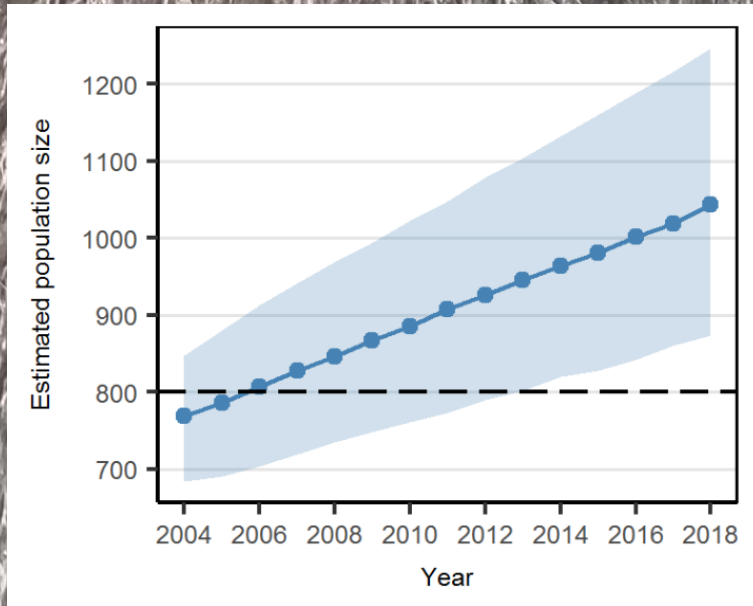
# Conservation Strategy Demographic Objectives

Independent female survival threshold - Using a six-year running average, maintain estimated annual survival of independent females of:

$\geq 0.92$  = the 2022 threshold rate consistent with a projected 90% probability that the population within the DMA will remain above 800 bears



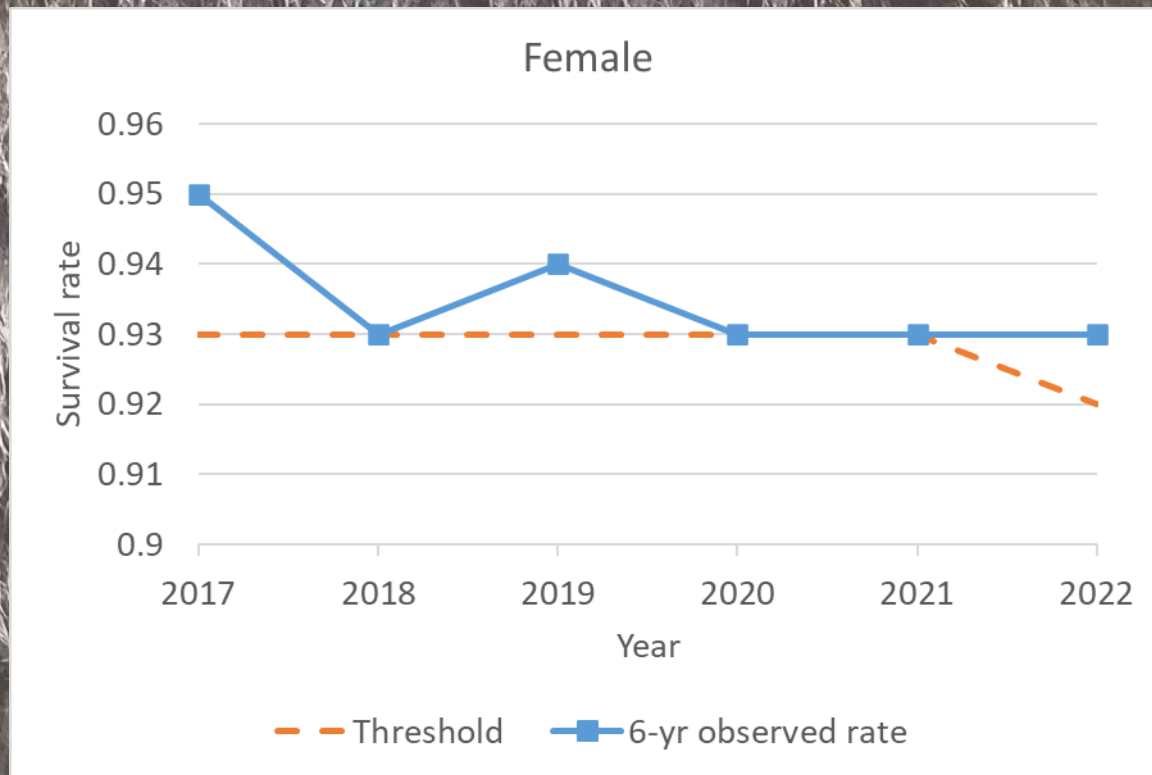
# Conservation Strategy Demographic Objectives



2022 population estimate within DMA = 1163 grizzly bears



# Independent female survival threshold





# Conservation Strategy Demographic Objectives

Independent mortality thresholds Using a 6-year running average, limit annual estimated number of total reported and unreported mortalities (TRU mortalities) to:

## Females

$\leq 25$  = the 2022 threshold number consistent with a projected 90% probability that the population within the DMA will remain above 800 bears

## Males

$\leq 30$  = the 2022 threshold number consistent with a projected 90% probability that the population within the DMA will remain above 800 bears

# Independent mortality thresholds

## Documented mortalities 2022

	Ageclass	Female	Male	Unknown sex	Total
Inside DMA	Independent	12	16	1	29

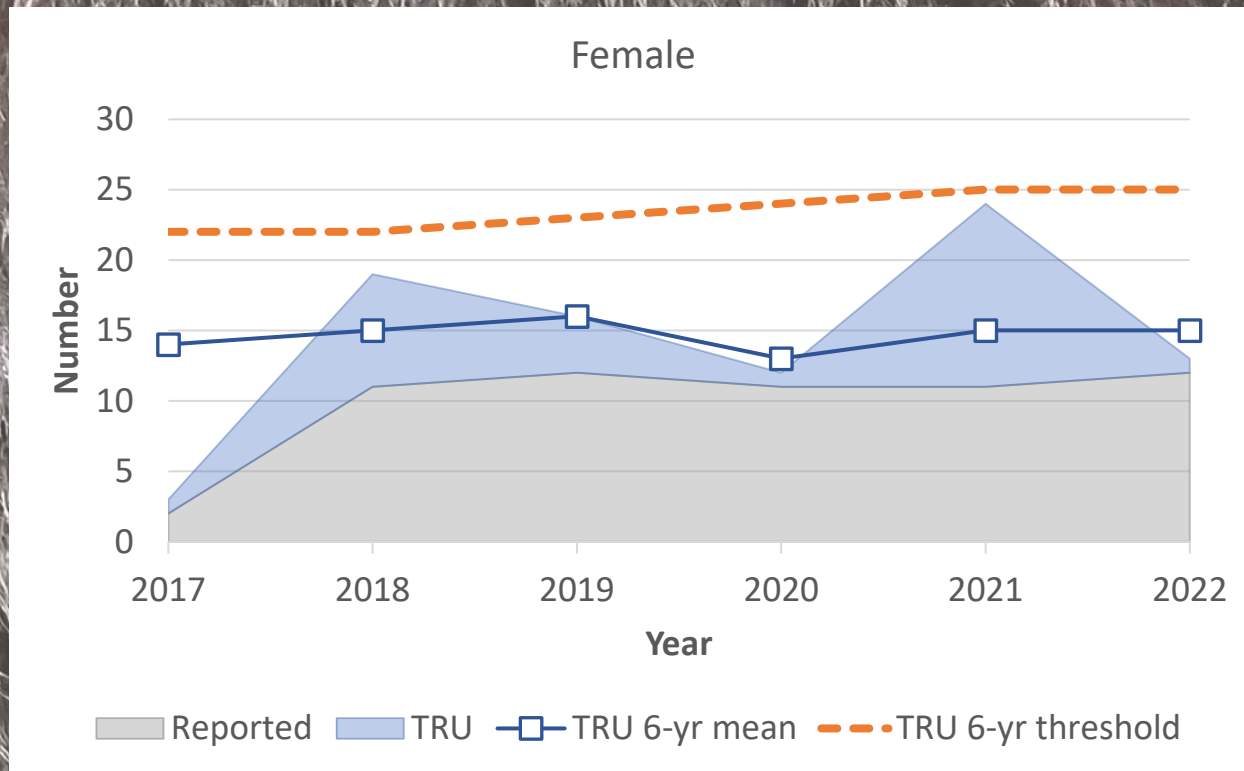


## Estimated total reported & unreported (TRU) mortality 2022

	Agency removal (A)	Telemetry (B)	Reported (high)	Reported (low)	Estimated reported and unreported (C)	Estimated total mortality (A+B+C)
Female	8	1	3	0	4	13
Male	10	2	5	0	7	19

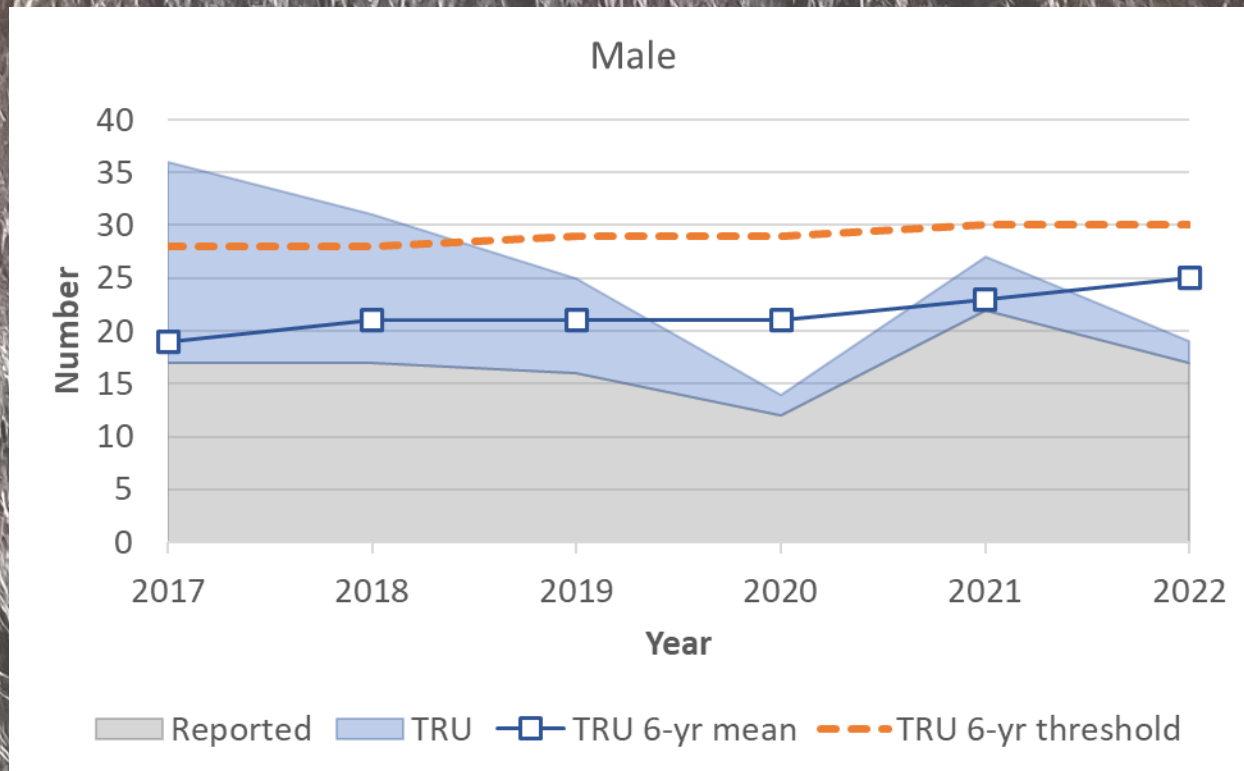


# Independent mortality thresholds





# Independent mortality thresholds



Preliminary Information-Subject to Revision.



# Monitor genetic and demographic connectivity

Estimate spatial distribution of the population  
biennially

Identify population of origin for individuals sampled  
inside and outside of the DMA

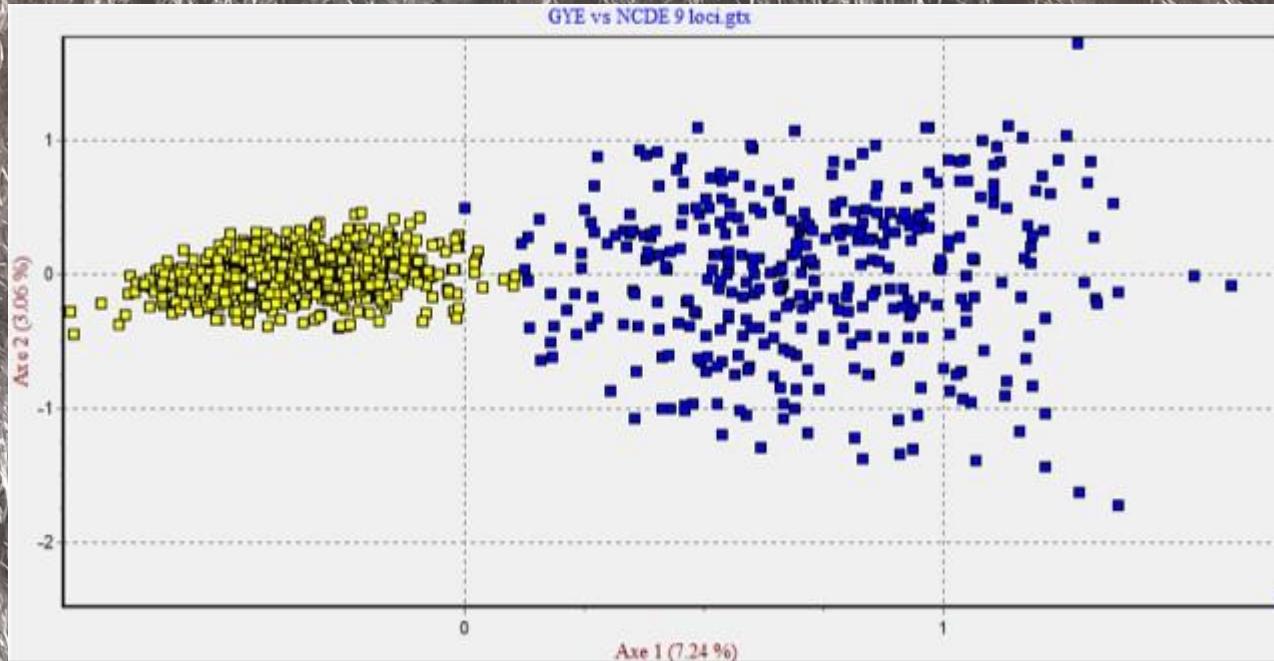
# Monitor genetic and demographic connectivity

Estimate spatial distribution of the population  
biennially

- Not completed yet
- Revised methodology to make all ecosystems consistent
  - ✓ 3-km grid versus 7-km grid
  - ✓ 15 year window versus 10-year window

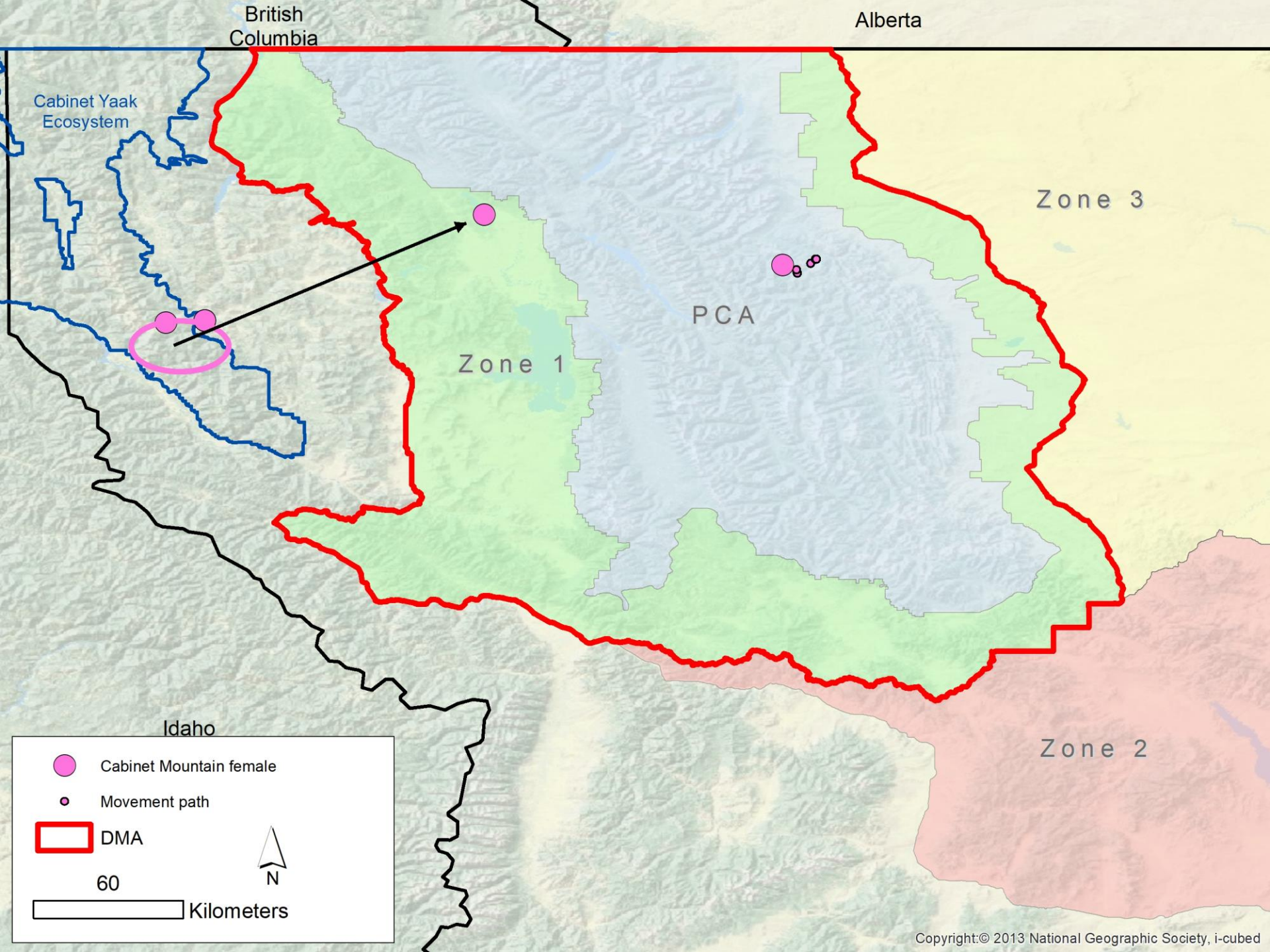


# Movements between ecosystems

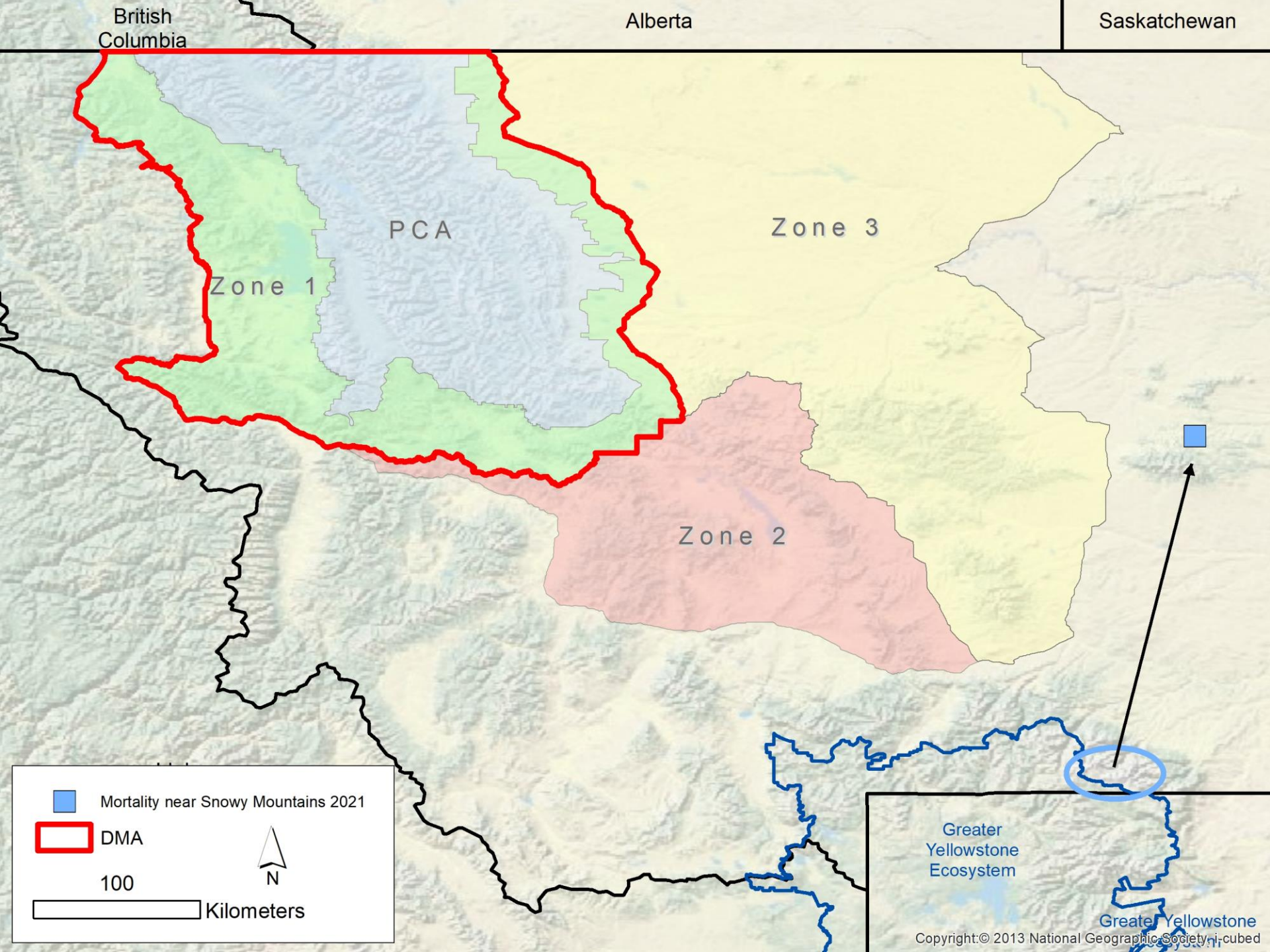


- No evidence of movements of individuals between the NCDE and GYE from DNA data through 2021
- No documented interbreeding with GYE bears

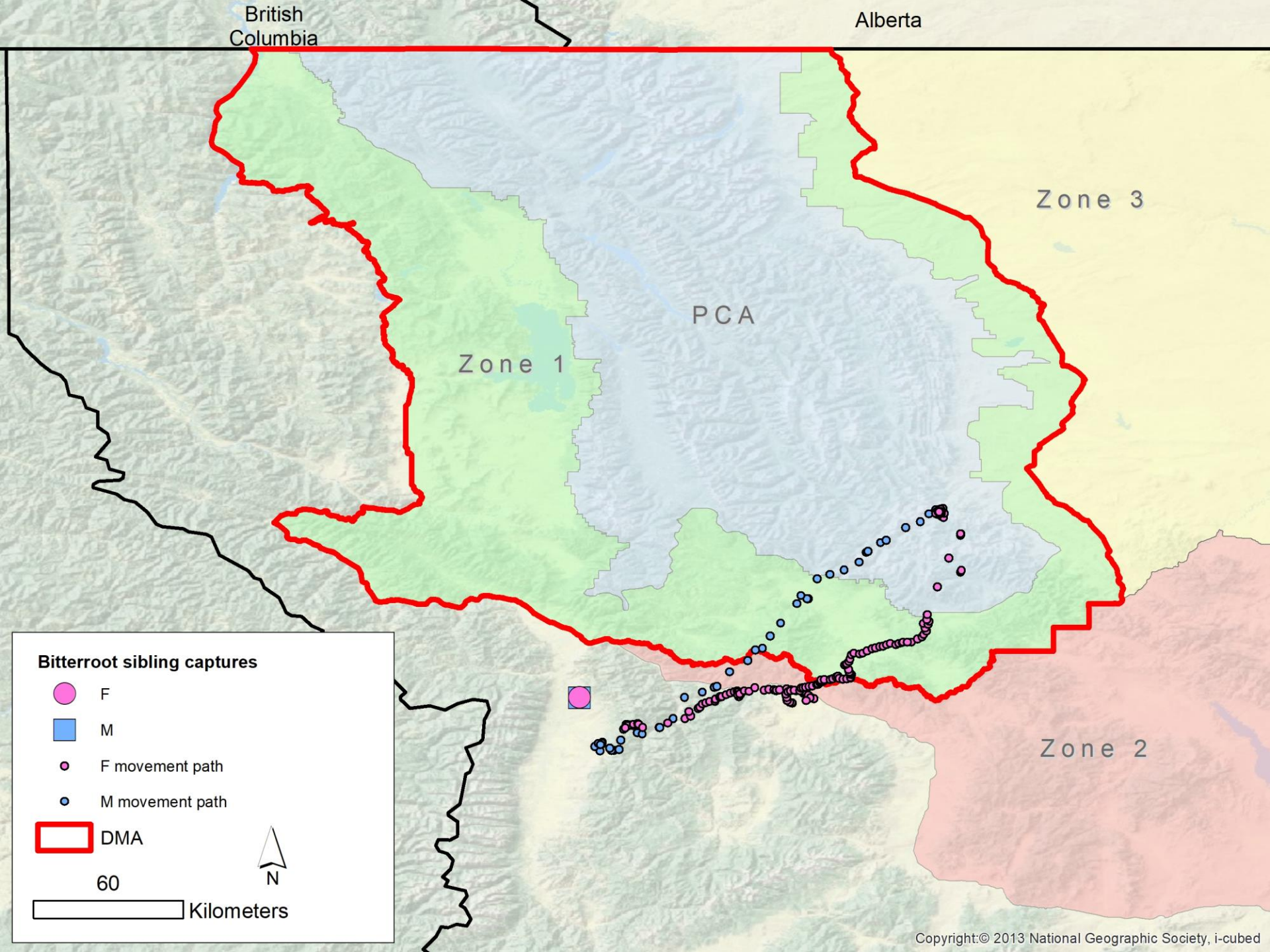












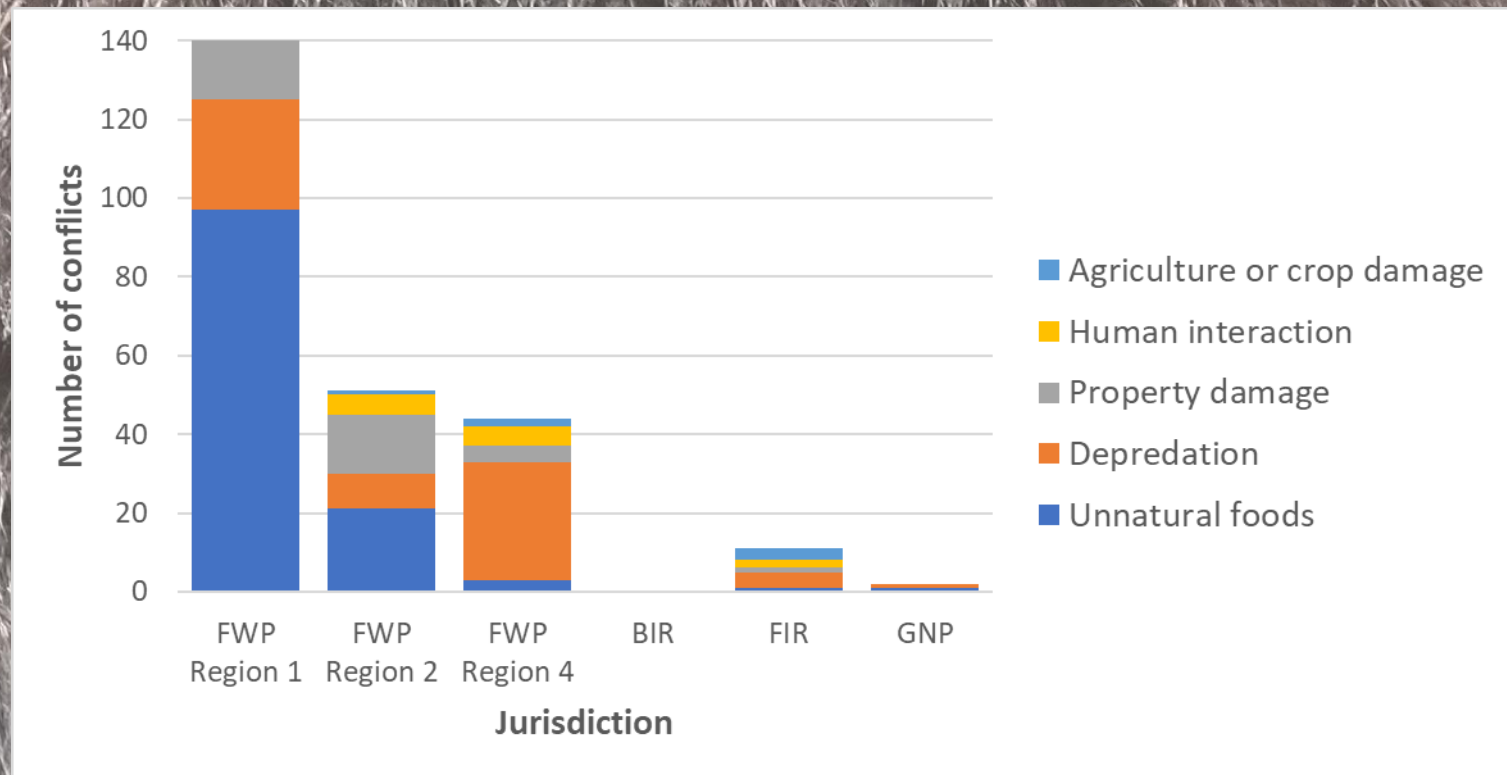


# Management Summary

Interagency management database, started in 2020

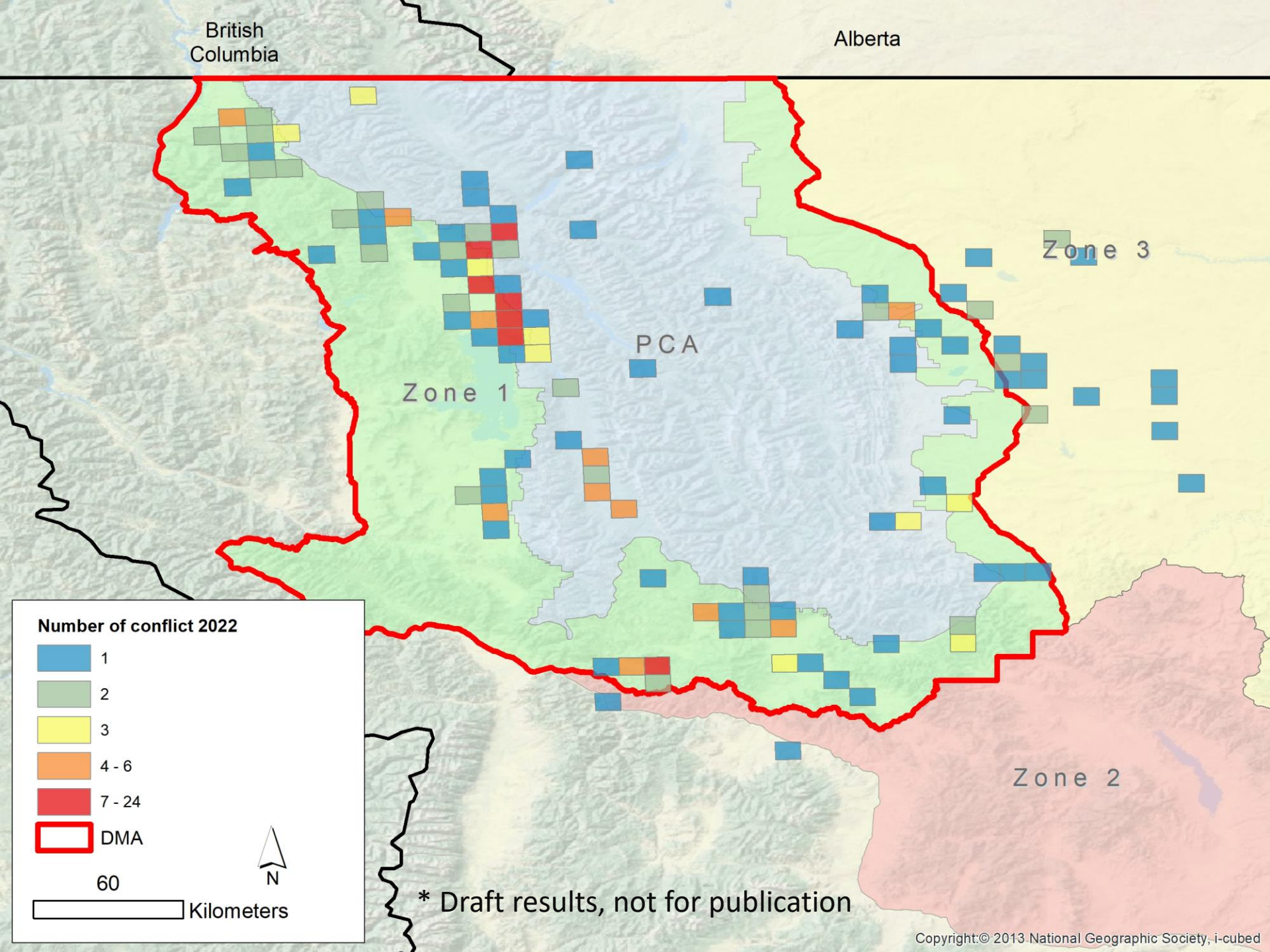
- Record human-grizzly bear conflicts
- Record preventative actions
- Records observations, including females with offspring and outliers
- Record opportunistic DNA samples obtained

# Human-Grizzly Bear Conflicts



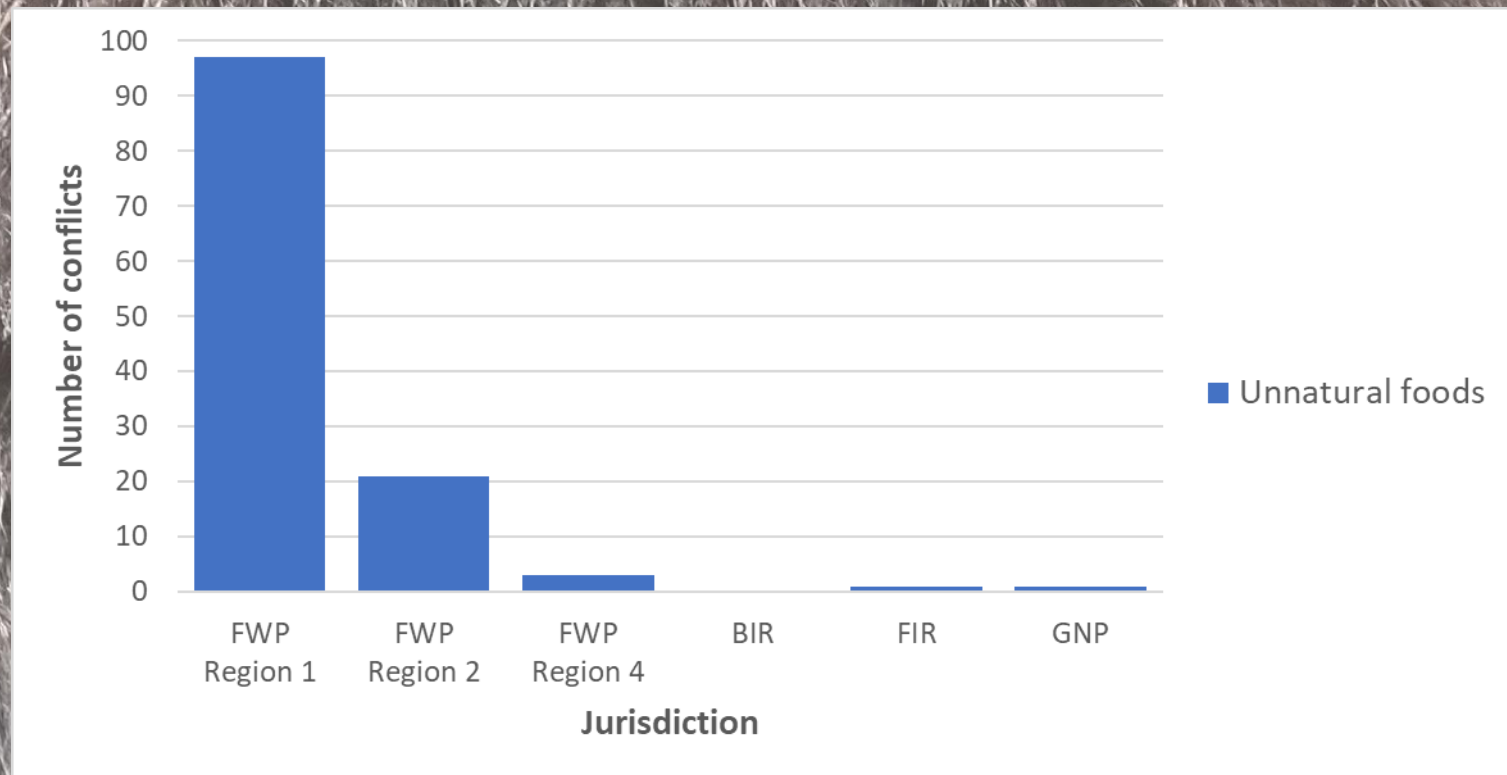
\* Draft results, not for publication







# Human-Grizzly Bear Conflicts

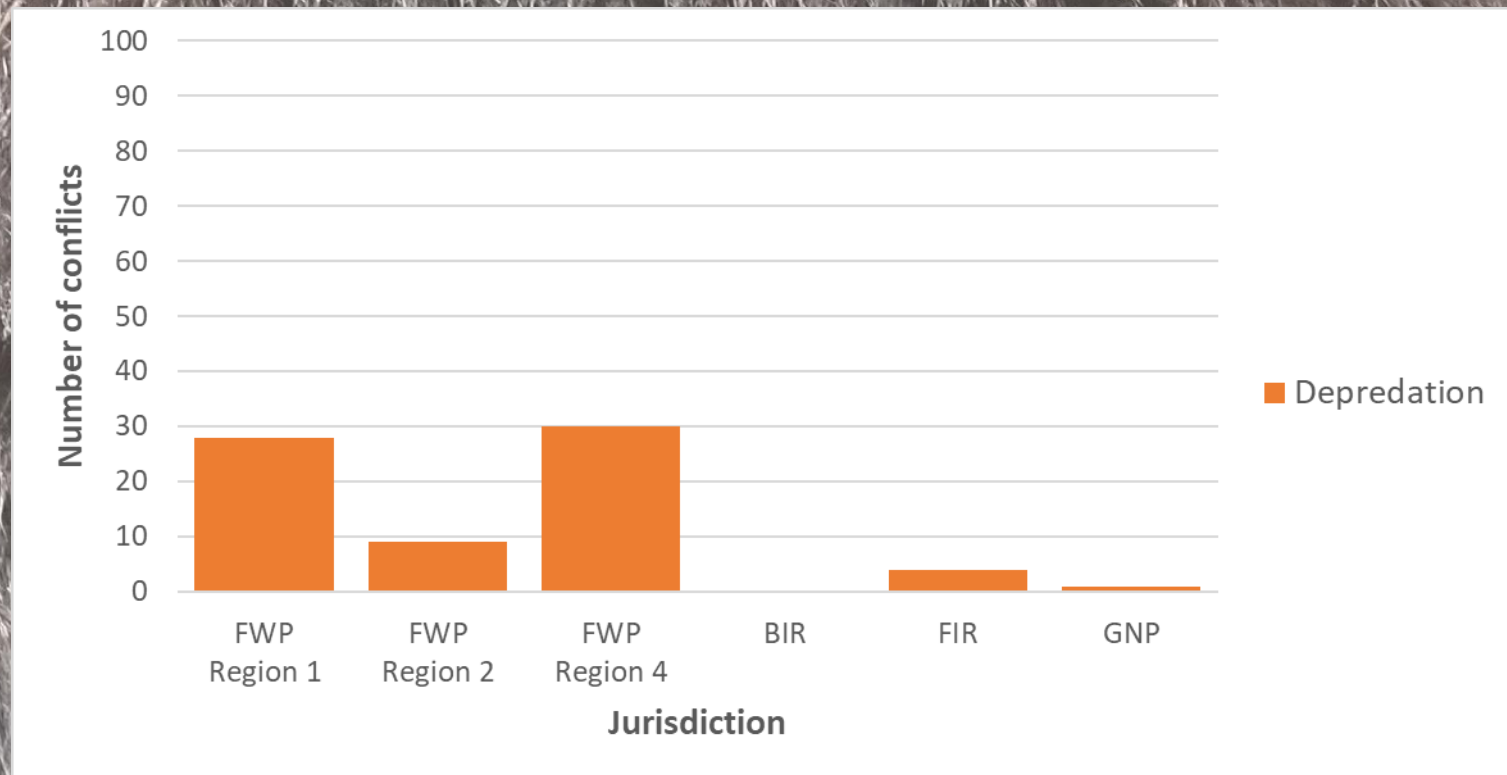


Garbage (55%), Pet or animal feed (35%)

\* Draft results, not for publication



# Human-Grizzly Bear Conflicts

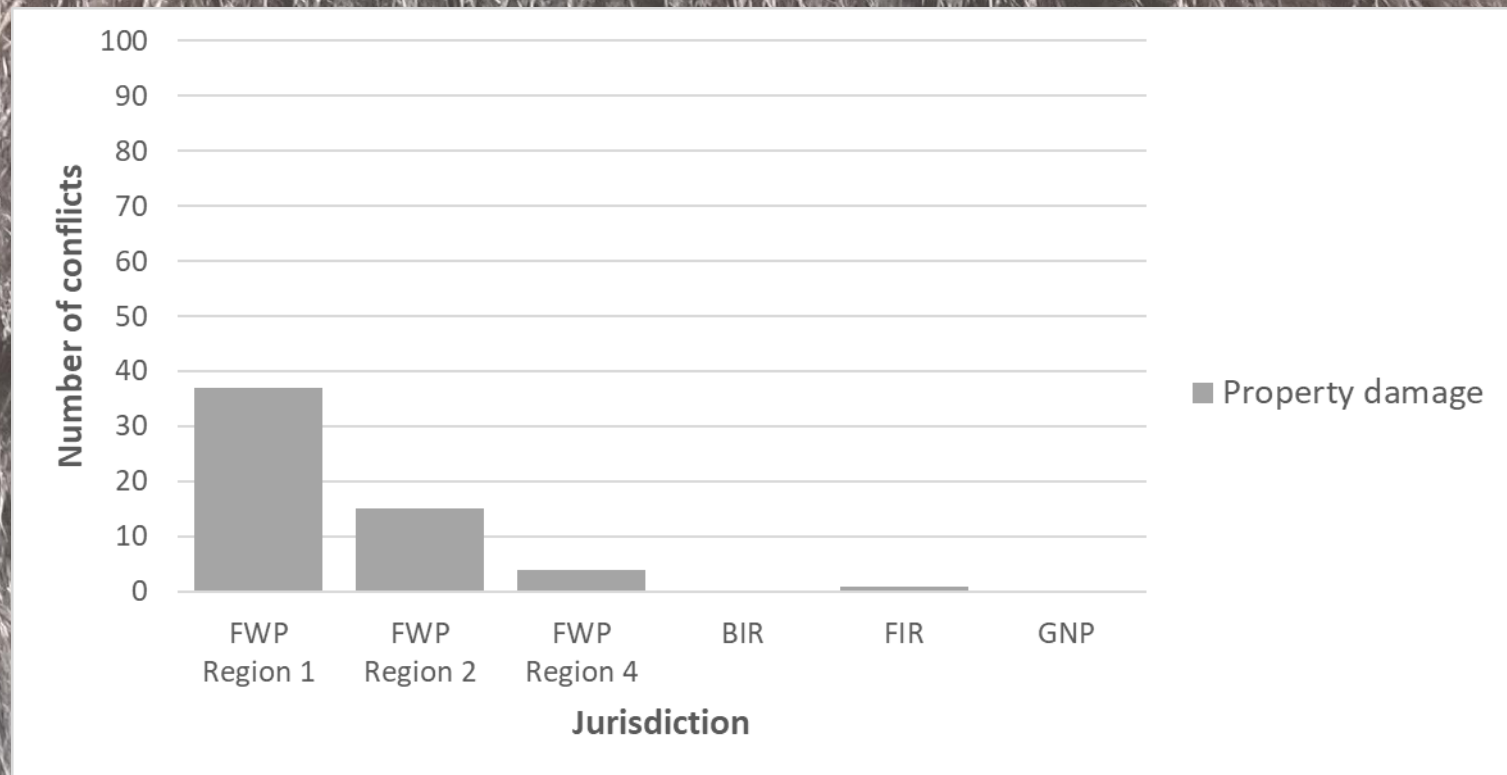


Chickens (49%), Cattle (31%), Sheep (11%)

\* Draft results, not for publication



# Human-Grizzly Bear Conflicts

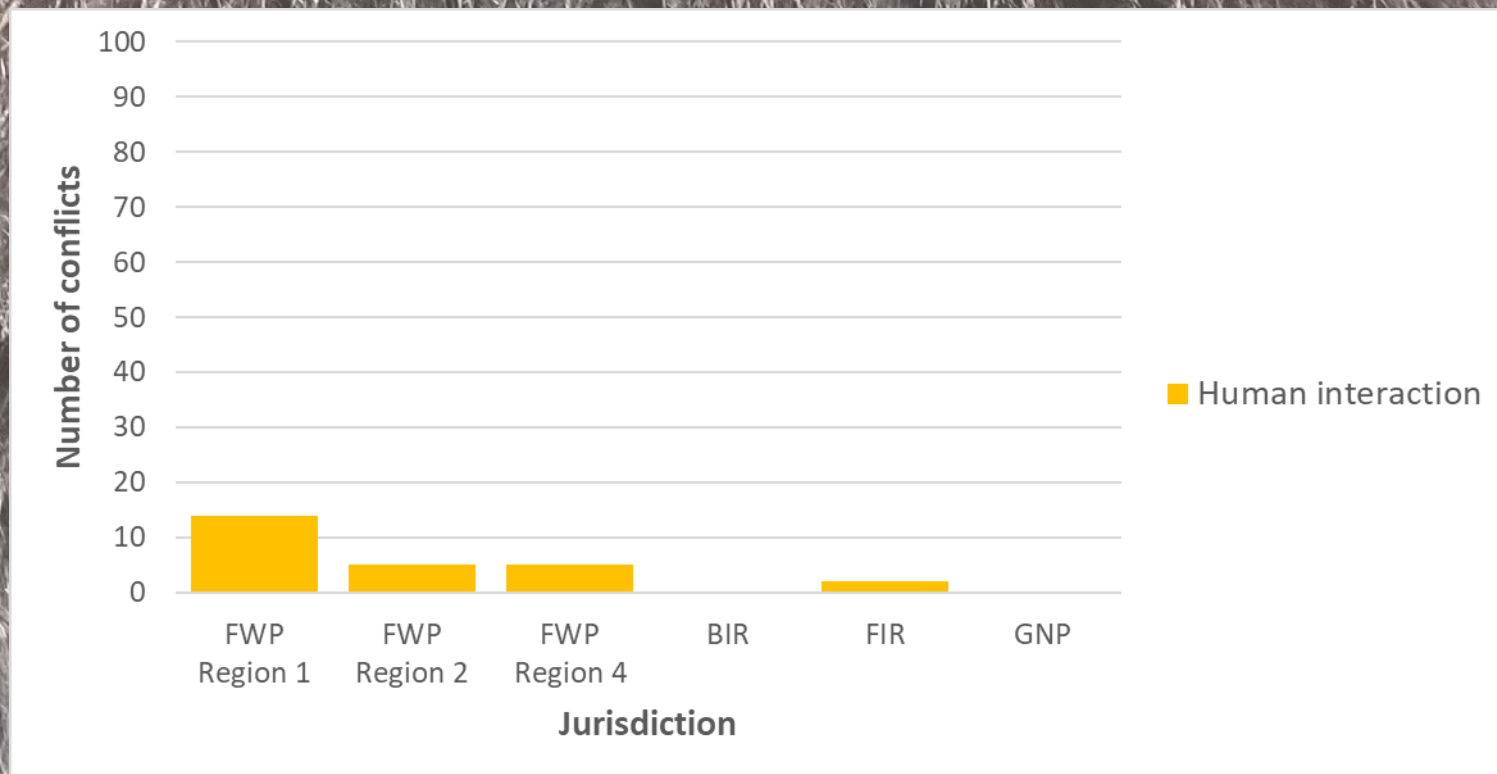


**Buildings (73%), Enclosure (18%)**

**\* Draft results, not for publication**



# Human-Grizzly Bear Conflicts

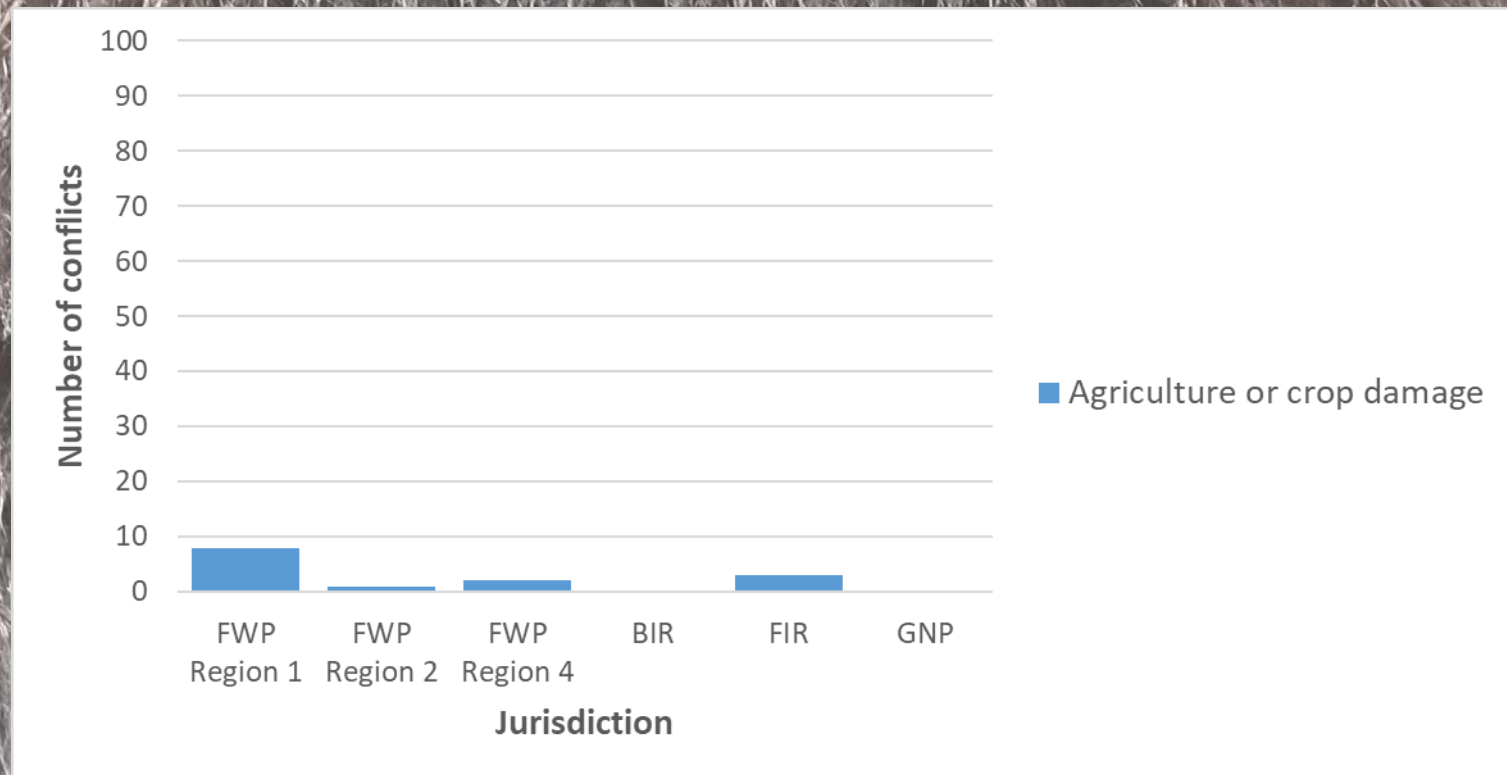


Aggressive encounter (42%), Habituation (38%), DOL shooting (12%)

\* Draft results, not for publication



# Human-Grizzly Bear Conflicts

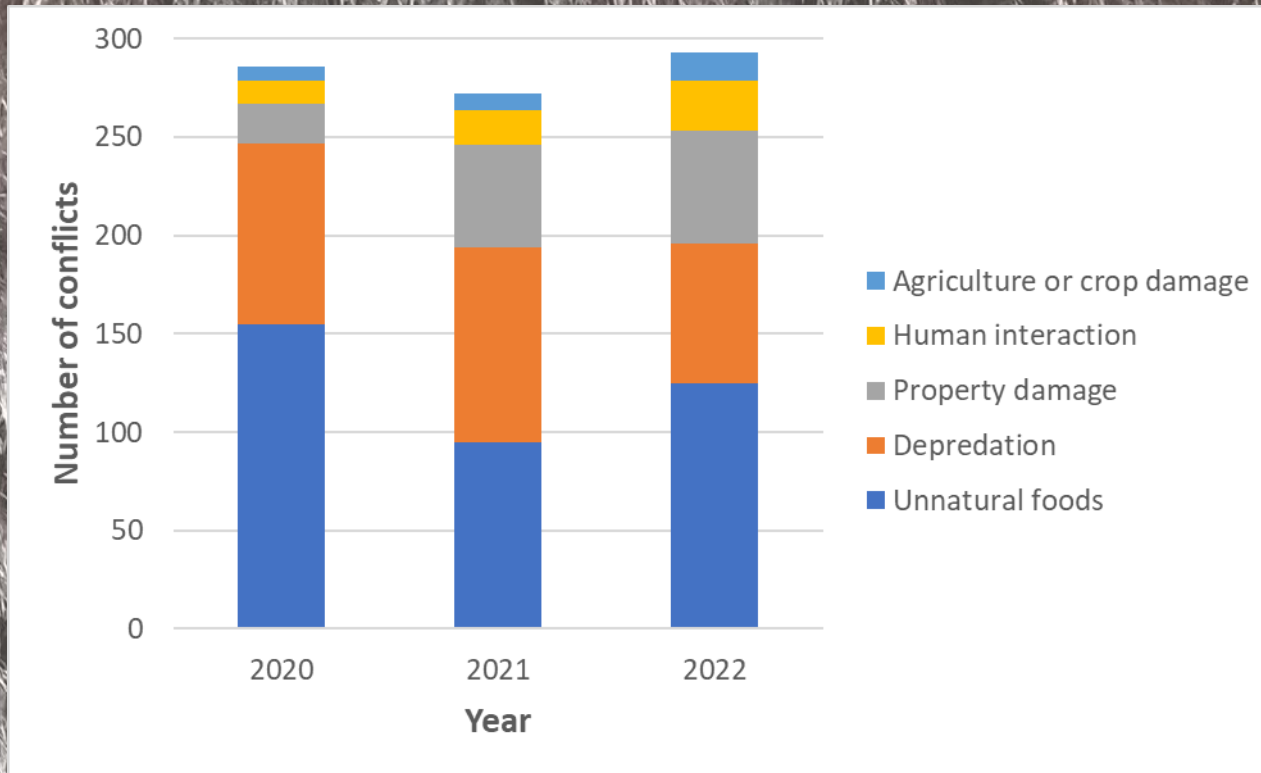


Orchard/fruit (42%), Stored grain (29%), Beehives (21%)

\* Draft results, not for publication



# Human-Grizzly Bear Conflicts 2020-2022



\* Draft results, not for publication



# Acknowledgements

A photograph of three brown bears in a lush, green, grassy field with yellow wildflowers. One large adult bear is in the center, facing left. A smaller cub is in the foreground, also facing left. Another cub is in the background, further up the slope. The bears are surrounded by dense vegetation.

Kyle Yorke  
Paden Alexander  
Kim Annis  
Courtney Lockerby  
Mackenzie Taylor  
Jack Austin  
Steve Cross  
Susan Clothier  
Erik Graham  
Daniel McHugh  
Bruce Montgomery  
Nathan Reiner  
Kari Kingery  
Nate Muhn

Kari Kingery  
Lee Anderson  
Rob Davies  
Mark Ruby  
Scott Snelson  
Jennifer Fortin-Noreus  
Hilary Cooley  
Ben Jimenez  
Rory Trimbo  
Amber Kornak  
Morgan Vance  
Wildlife Services  
Rob Cherot  
Joe Rahn  
Ken Justus  
Jim Pierce  
Red Eagle Aviation  
Two Bear Air  
and many others...