



SW Montana Grizzly Bear DNA Project

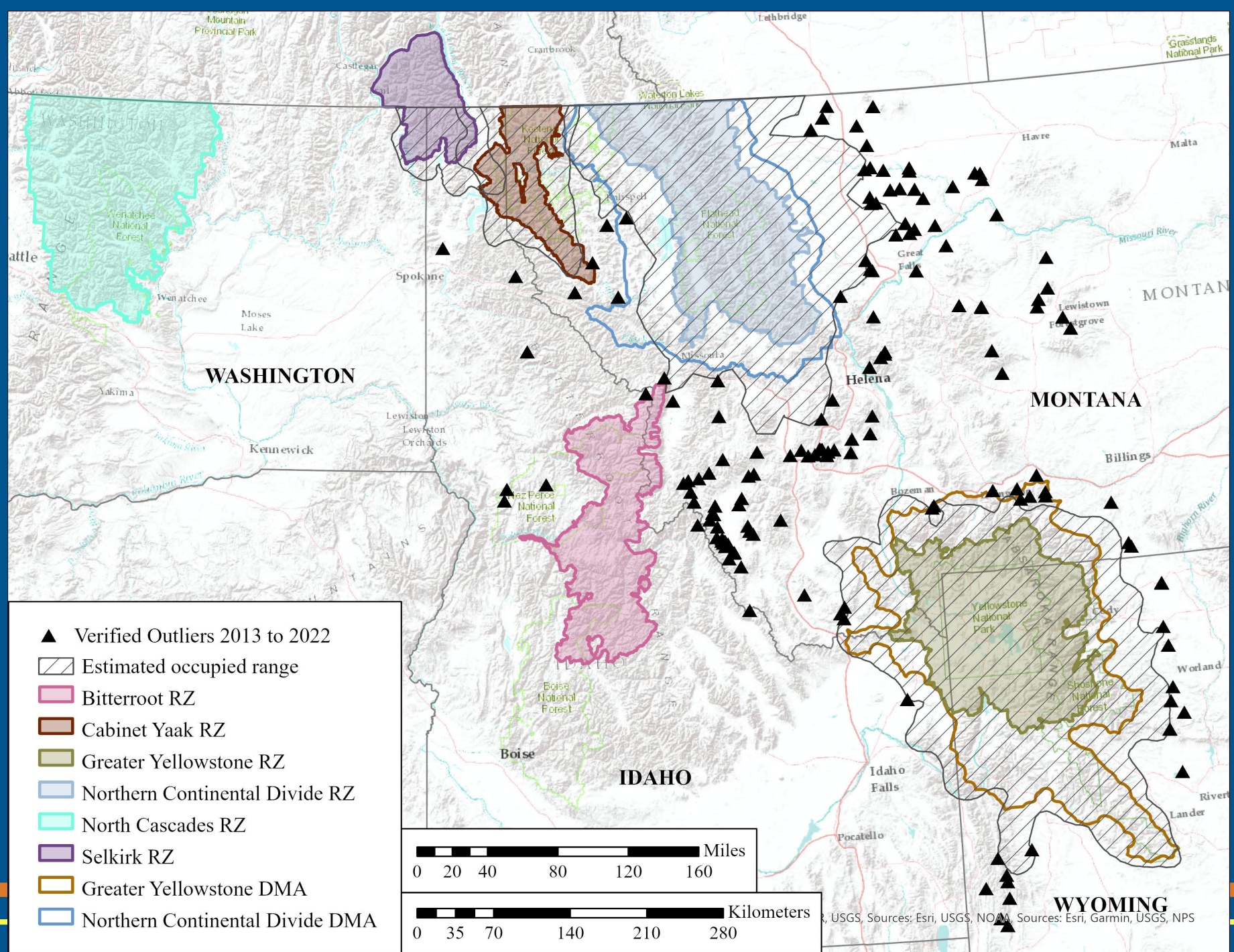
Jennifer Fortin-Noreus
Grizzly Bear Recovery Program
Fall, 2023

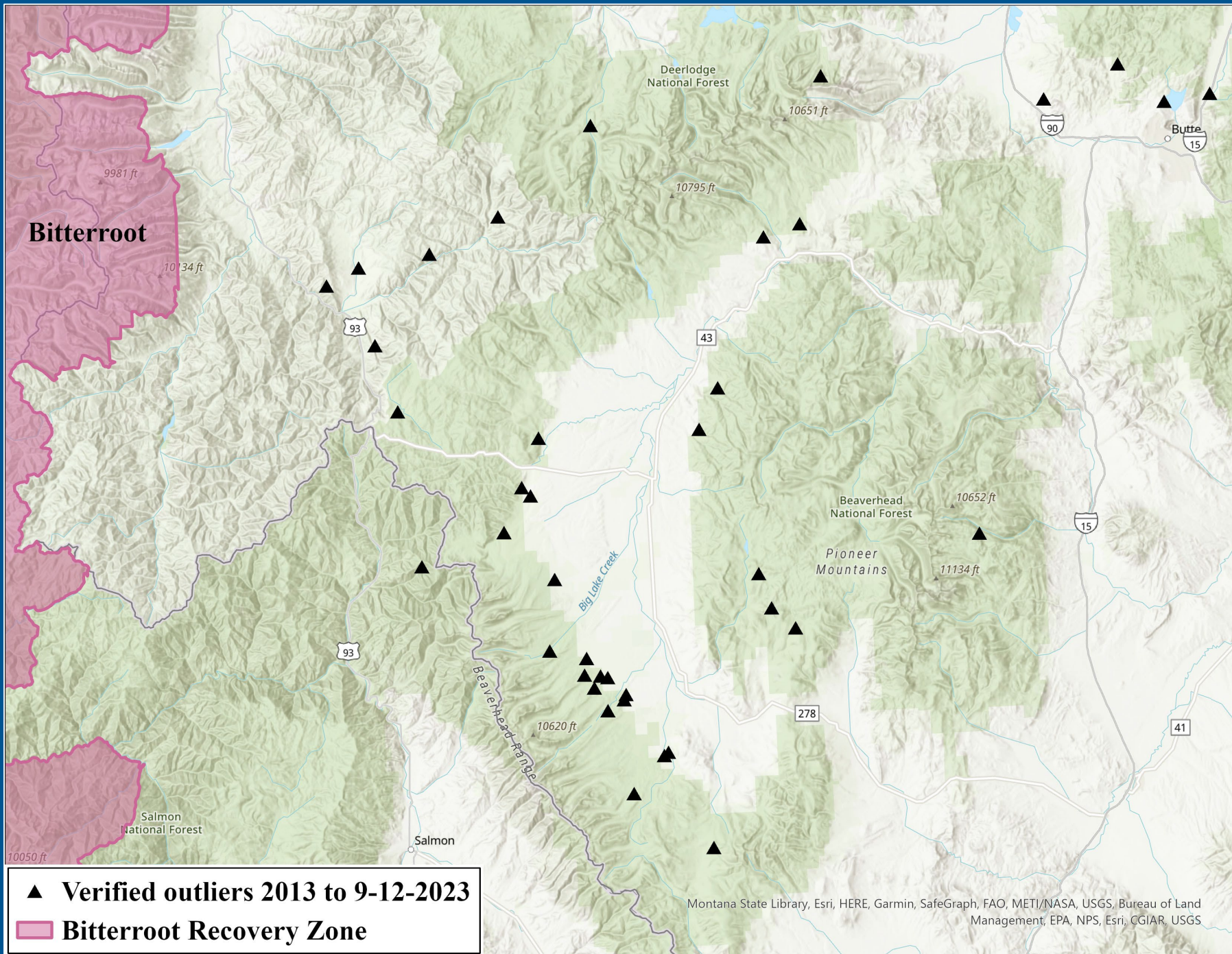


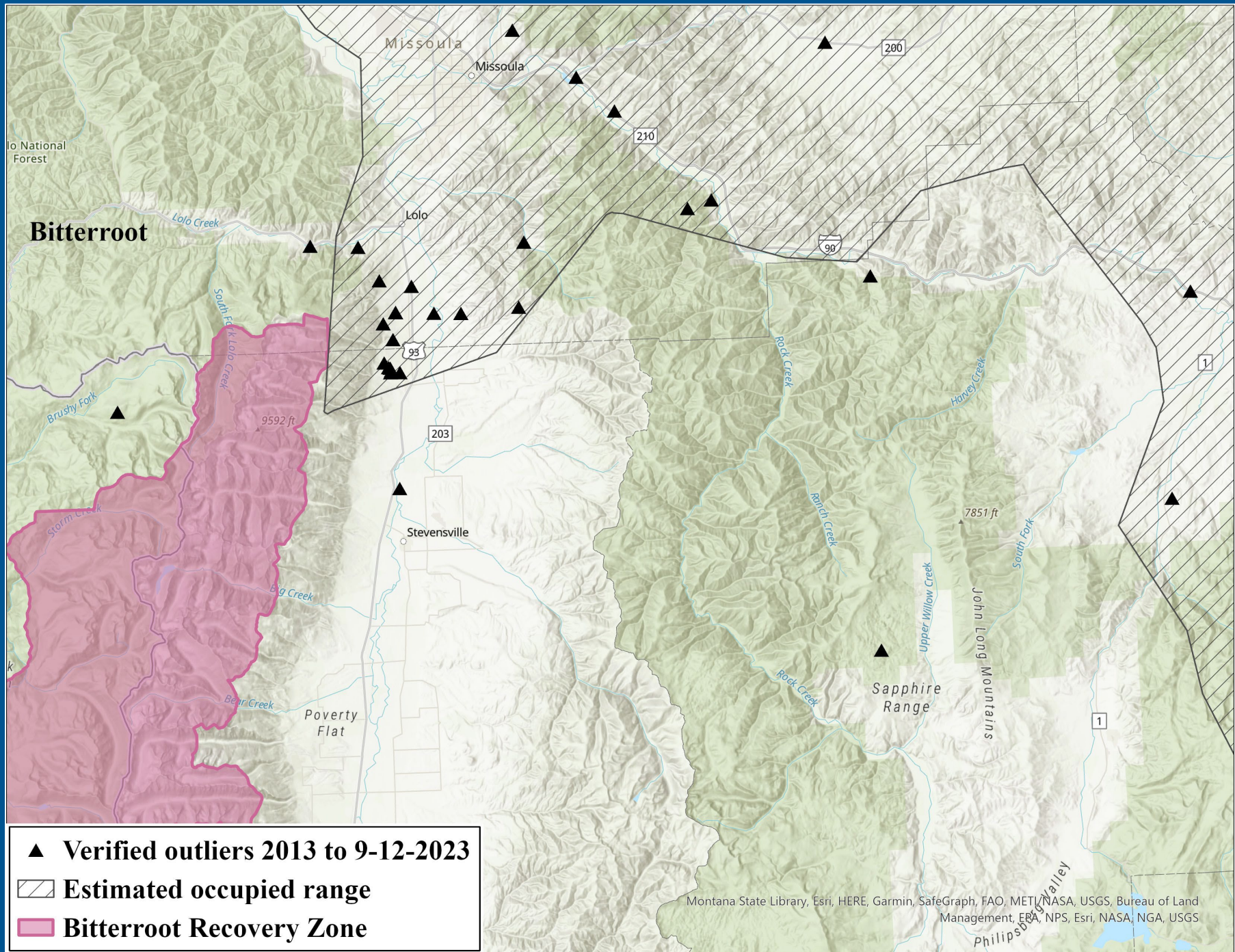
Project Overview

- Goal: Document presence of grizzly bears in Southwest Montana outside current distributions
- 2022 Results
- 2023 Field efforts
- 2023 Preliminary results









Hair Corral Setup

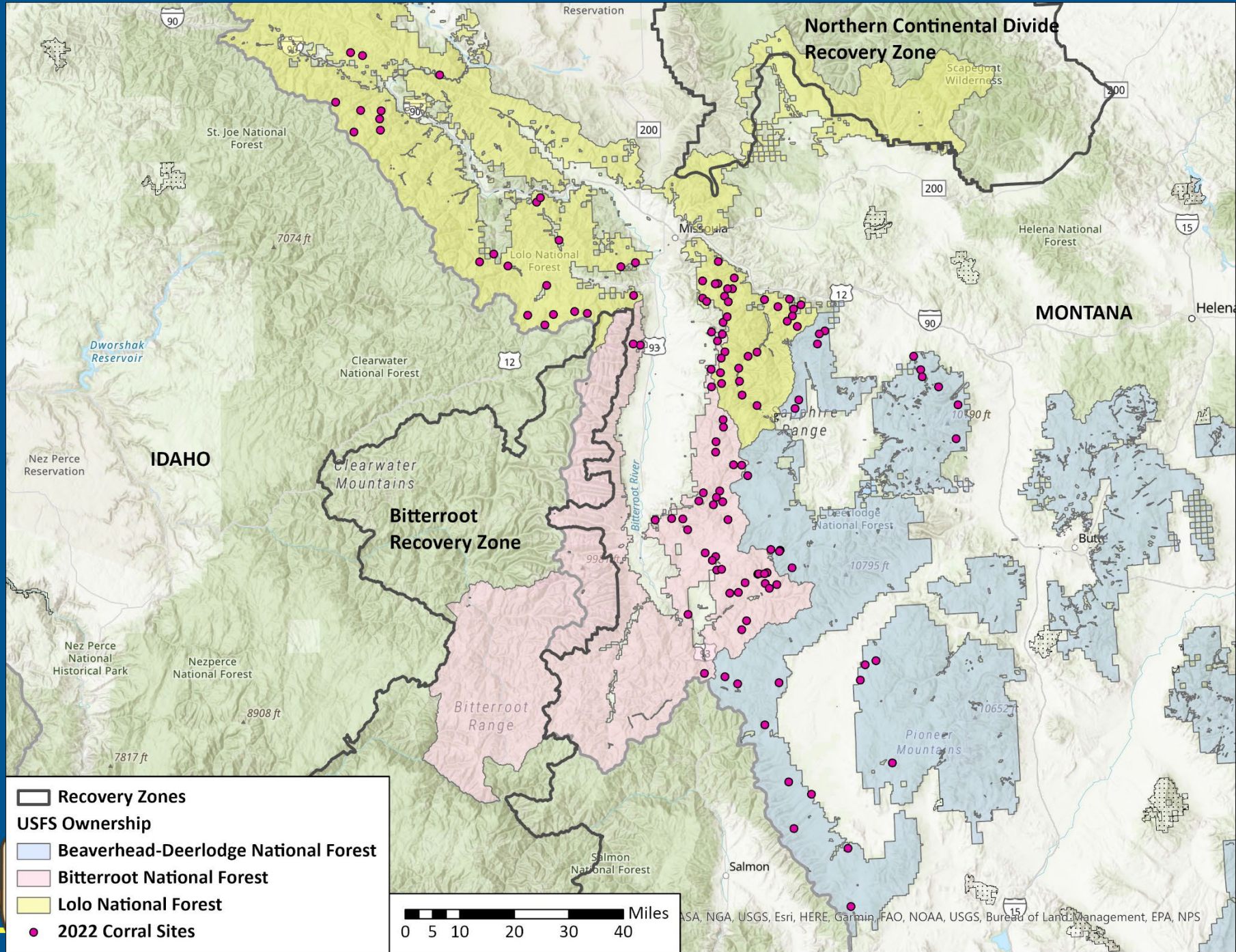
- Protocol used in the CYE and SE
- Hair corrals (with lure, no bait) with cameras
- Sites > 200m open roads, > 500m campgrounds, >100m closed roads and trails



2022 Field Effort

- Crews:
 - USFWS (2 full-time crews, 1 part-time crew)
 - Defenders of Wildlife (1 part-time crew)
 - Assistance from Lolo, Bitterroot, and Beaverhead-Deerlodge NFs, MCC, and MFWP
- Survey sites:
 - 124 sites on USFS land
 - 1-4 months per site
 - 10,090 corral nights
- Timing: mid-May through mid September
- Site location based on previous verified sightings and recommendations of biologists.



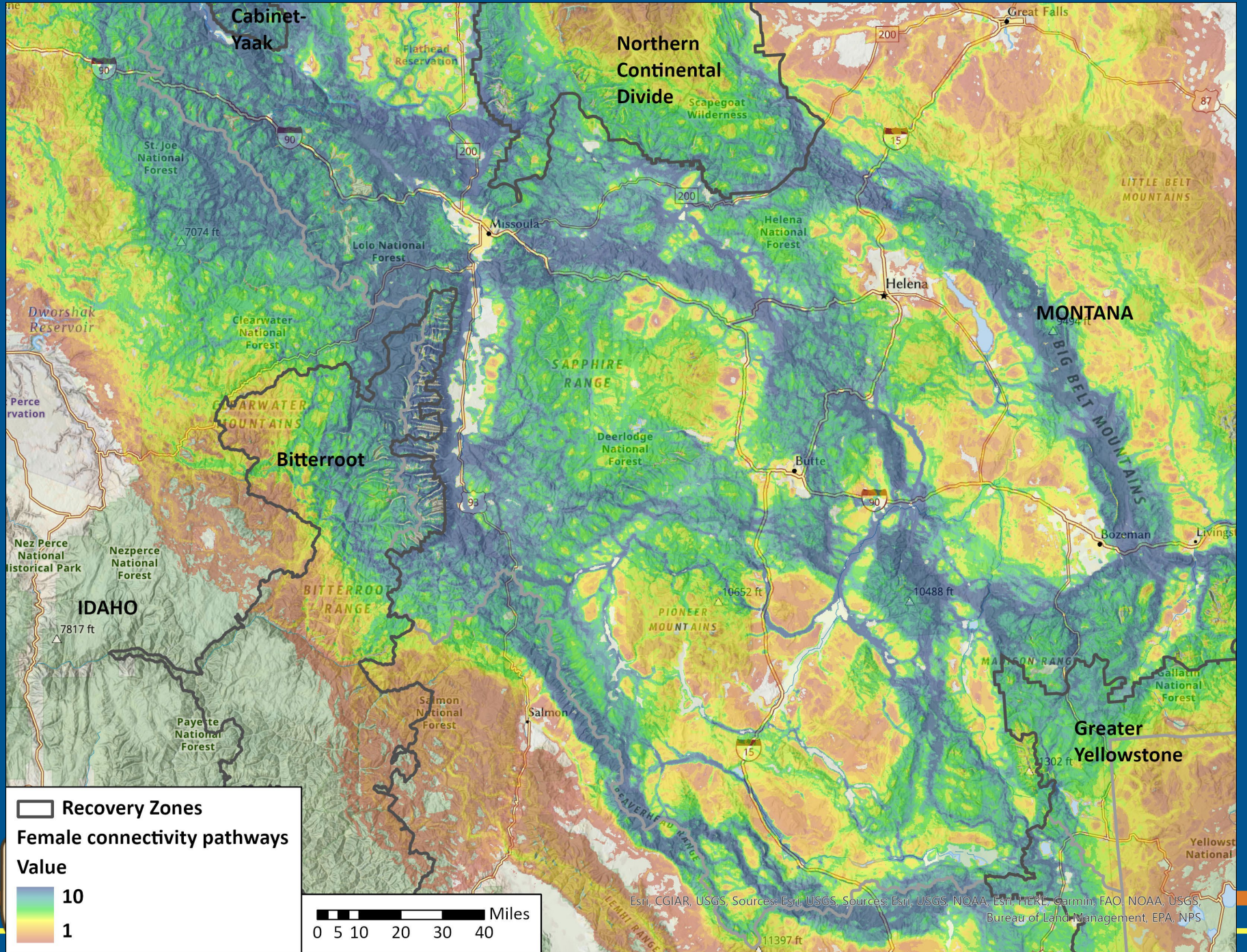


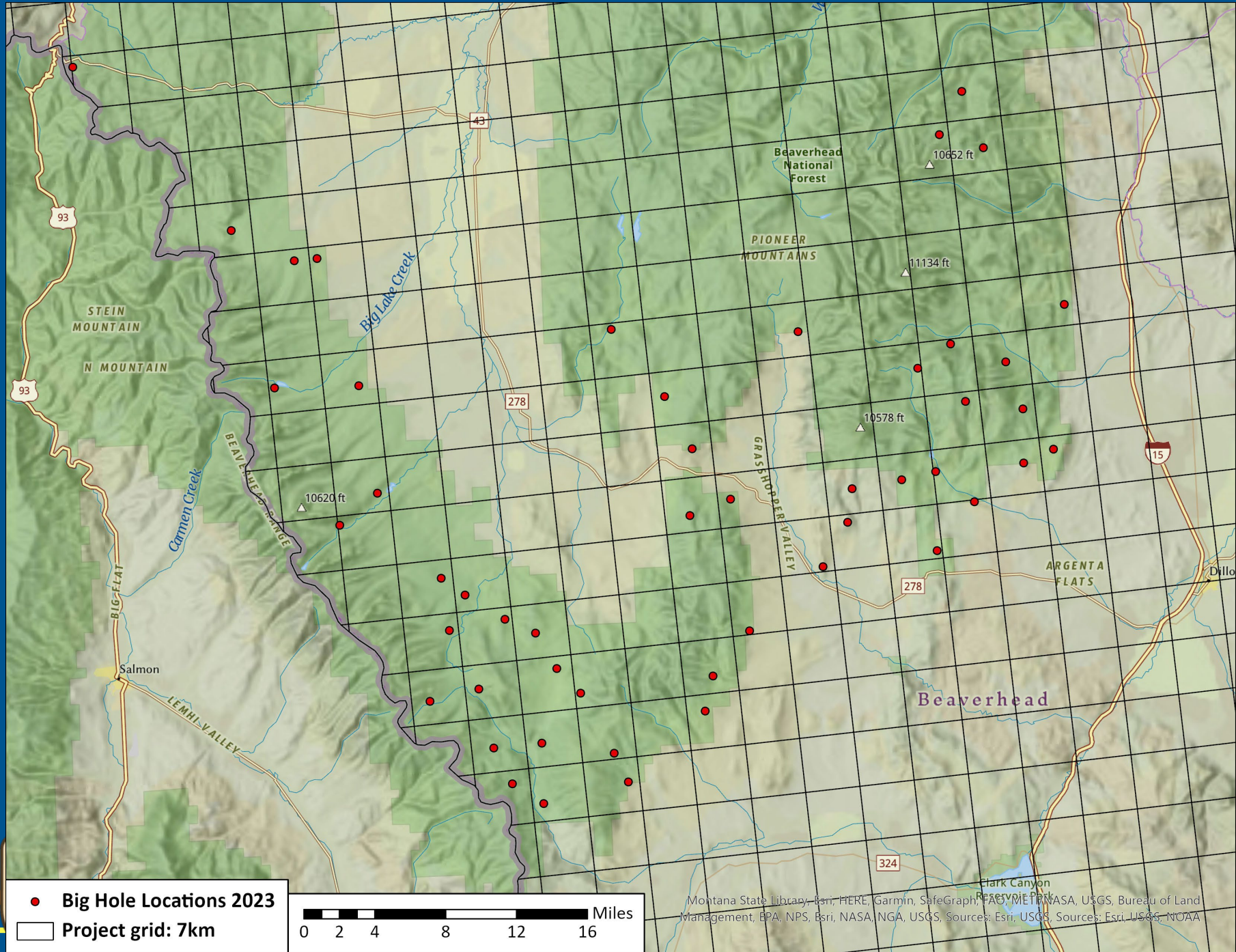


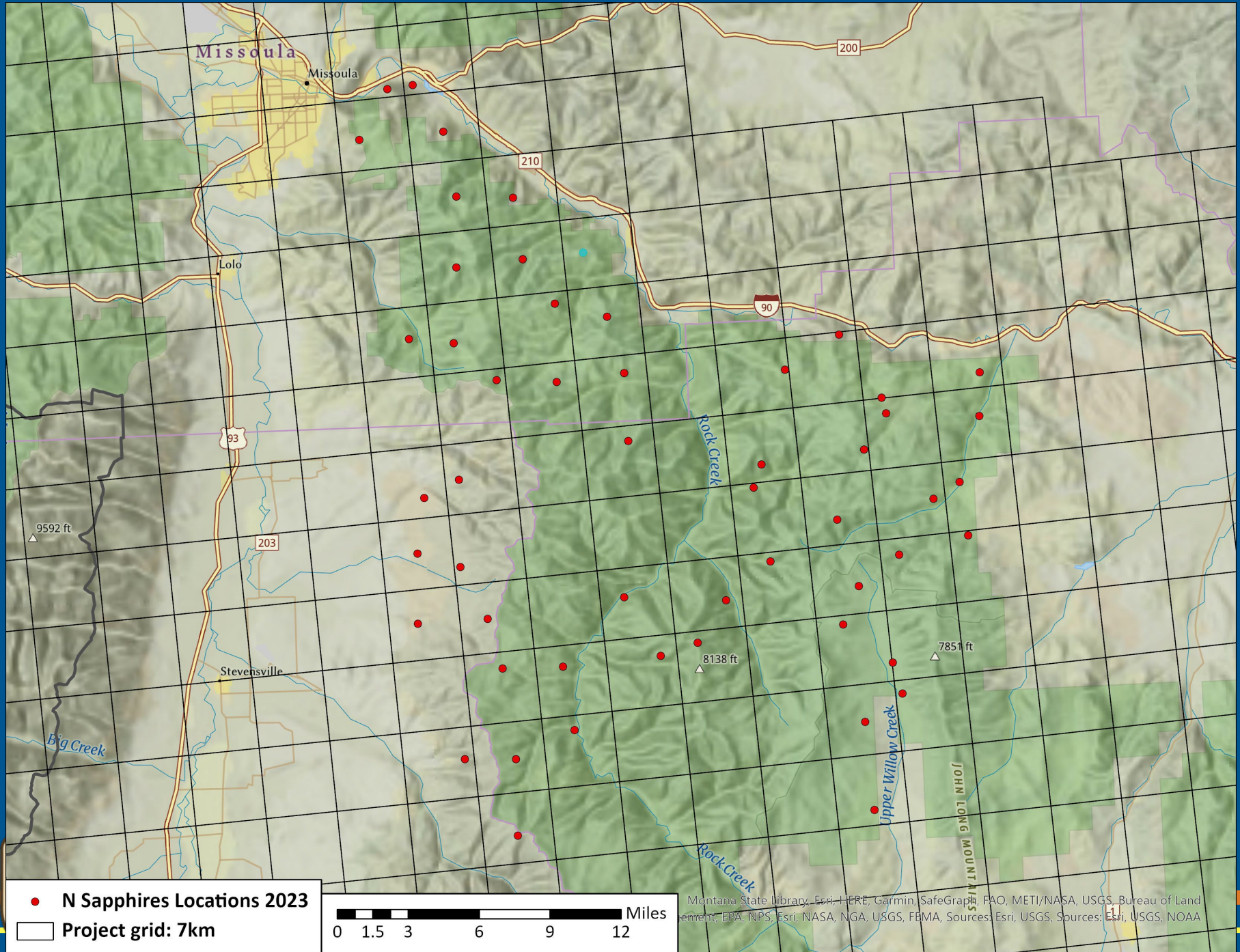
2023 Field Effort

- Crews:
 - USFWS (2 full-time crews)
 - Defenders of Wildlife (1 part-time crew)
 - Assistance from Lolo, Bitterroot, and Beaverhead-Deerlodge NFs, and MFWP
- Survey sites:
 - 104 sites on USFS, BLM, and MFWP land
 - 1-3 months per site
 - 10,090 corral nights
- Timing: mid-May through end of August

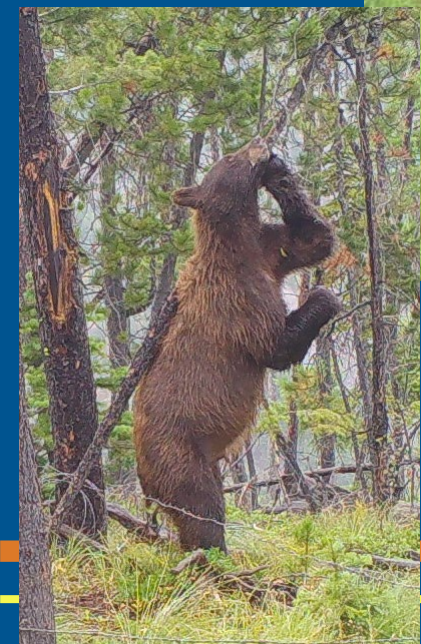
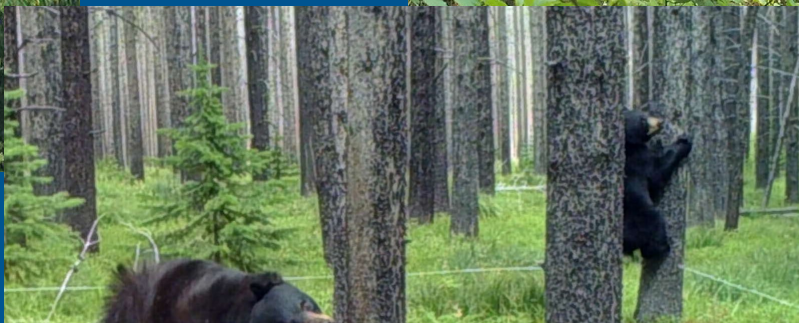
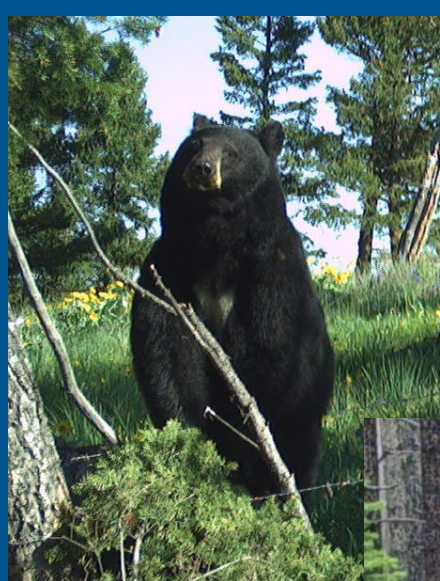














Future Actions

- Summarize 2023 verified sighting information from partners
- Assess potential areas for improvement
- Reporting of final results (Spring/Summer 2024)
- Coordination for 2024 field season



2024 Needs

- Expanded coordination
- Cameras
- Truck



Thank you!

