

Selkirk and Cabinet-Yaak Grizzly Bear Monitoring

Wayne Kasworm, Thomas Radandt, Justin Teisberg, USFWS

Michael Proctor, Birchdale Ecological

2022-08-15 4:06:22 PM M 4/10

72°F

- 2023 Field Season Capture results
- 2023 Mortality summary
- 2023 Genetic Collections summary
- Blue Grass Bog Creek monitoring
- Selkirk Population estimate progress
- Other Projects



F6701782

RECONYX

Selkirk 2023

Research Captures

3 year-old female late June (140 lbs)

5 year-old male late July (345 lbs)



Selkirk 2023

Management Capture

1068 – 3-4 year-old male) late September
(397 lbs

Released in Slate Creek north of Sullivan
Lake



Cabinets 2023 Captures

- 5 year-old male (270 lbs) late July,
- 12 year-old female (255 lbs) late August



Yaak 2023 Captures

- 6 year-old male (480 lbs) late May
- 8 year-old male (305 lbs) late August
- 16 year-old female (250 lbs) late August
- 5 year-old male (360 lbs) mid September
- 20 year-old female (350 lbs) mid September
- 10 year-old female (315 lbs) mid September
- 4 year-old male (260 lbs) late September



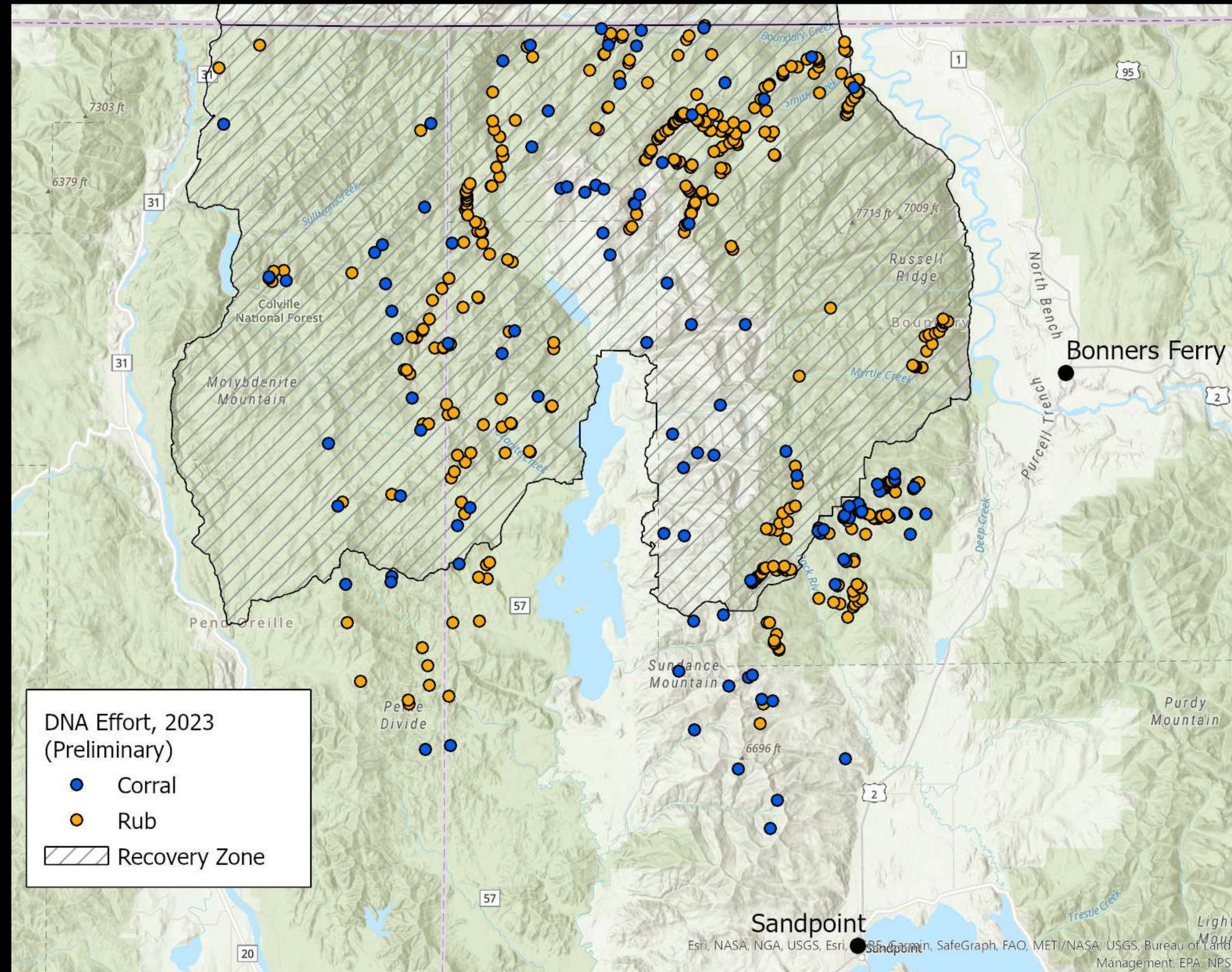
2023 Known Mortality

- Subadult unmarked male early June Selkirks (mistaken identity).
- 7 year-old collared male (880) mid May Cabinets (under investigation)
- Skull of 10 year-old male found in Cabinets this fall 2022 or 2023 mortality of unknown cause
- No BC reports yet



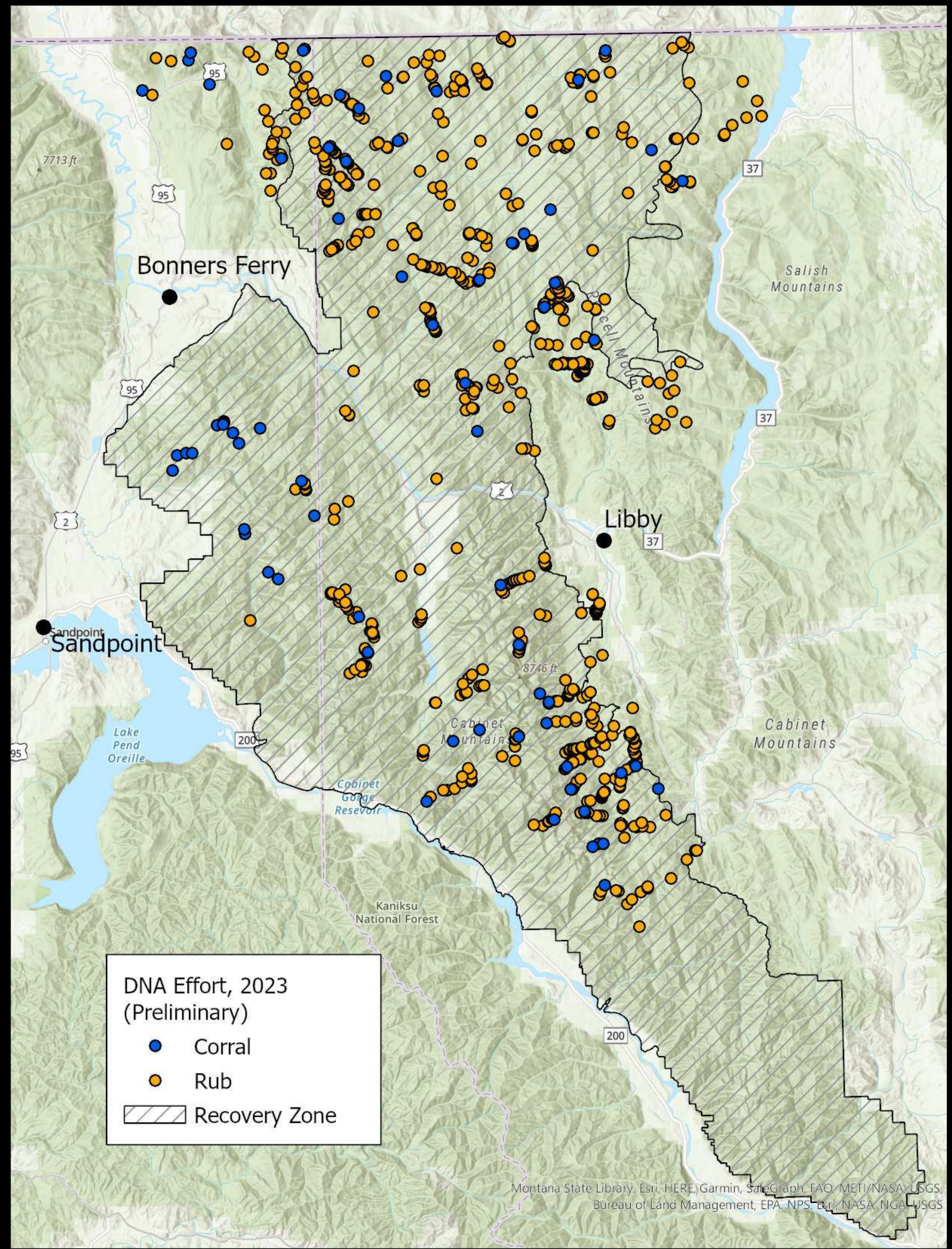
Selkirk Hair Snagging for Genetic Monitoring

- 414 Rub sites visited 1,354 times
- 114 Corrals sampled, typically moved every month
- Not all data available yet



Cabinet-Yaak Hair snagging for Genetic Monitoring

- 811 Rub sites visited 3,084 times
- 76 Corrals sampled, but several left in place for multiple sessions
- Not all data available yet
- 2022 Genetics results still at Lab



Bog Creek Monitoring

Blue-Grass BMU

**Border Patrol rebuilt
5.5 miles of closed
road in Bog Creek to
allow access to the
Priest Lake Basin from
Boundary Creek**

N

0 1 2 4 6 8 Miles

Esri, HERE, Garmin, SafeGraph, METI/NASA, USGS, Bureau of Land Management, EPA, NPS, USDA, Esri, NASA, NOAA, USGS, Sources: Esri, USGS

Blue-Grass BMU

Legend

BLUE GRASS BOG PROJECT

Device, Road status

- CAMERA,BP
- CAMERA,GATED
- CAMERA,OPEN
- CAMERA,RESTRICTED
- + COUNTER,BP
- + COUNTER,GATED
- + COUNTER,OPEN
- + COUNTER,RESTRICTED

0 0.75 1.5 3 4.5 6 Miles

Esri, HERE, Garmin, SafeGraph, GeoTechnologies, Inc, METI/NASA, USGS, Bureau of Land Management, EPA, NPS, USDA

N



Boundary Lake

Marsh Lake

Joe Lake

Hidden Lake

Cutoff Lake

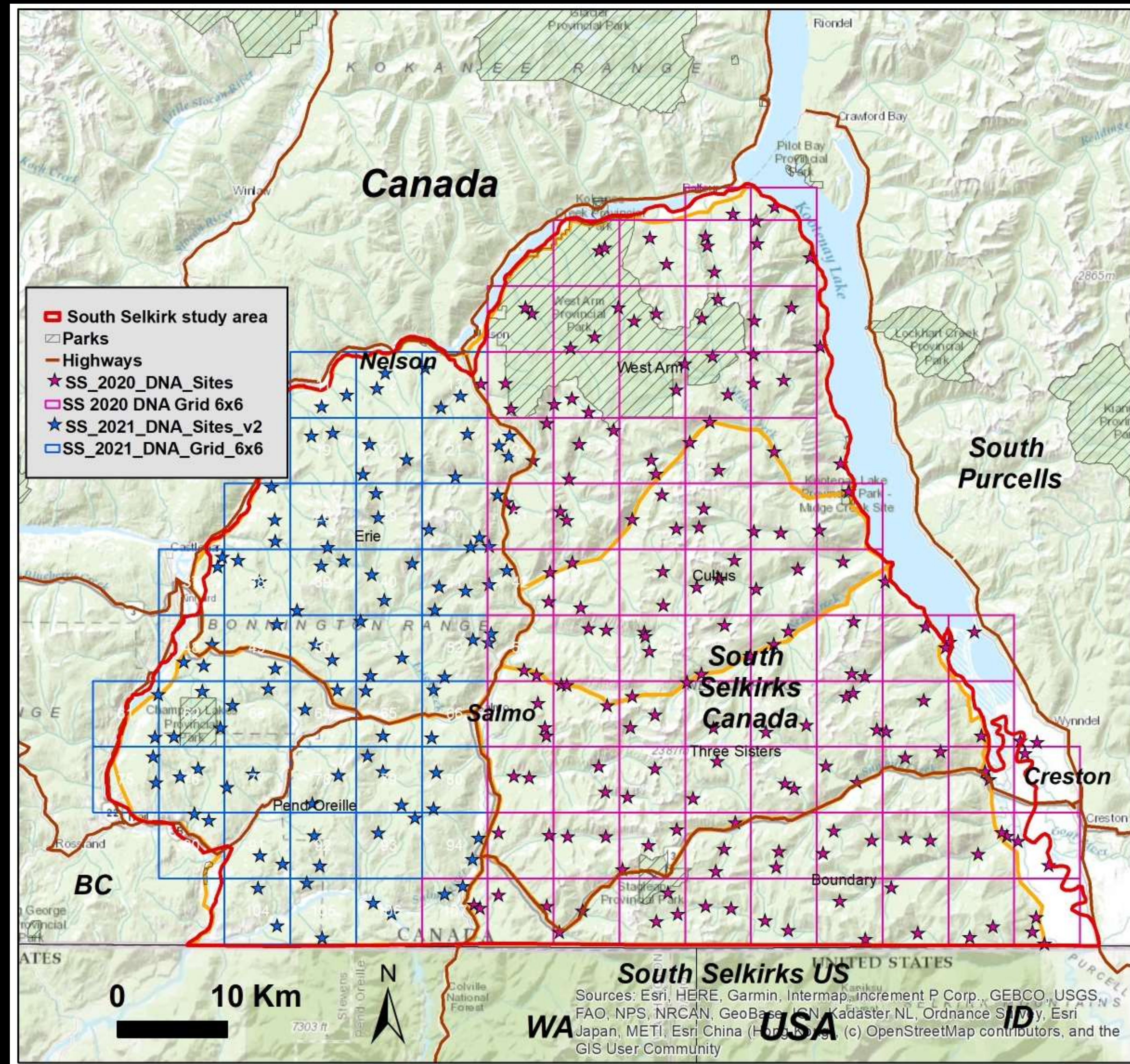


F6700601

RECONYX

BC Selkirks Population Estimate

- Hair snag samples were collected during 2020 (east of Highway 6) and 2021 (west of Highway 6)
- Genetic analysis complete and a report is available
- Proctor provides a closure corrected population estimate of 69 bears
- Planning a transboundary (BC+US) population estimate through a consultant beginning this winter



Other Projects

- Huckleberry mapping and production Justin Teisberg and Tom Radandt
- Bear Genetics U. Of Idaho Graduate Student Megan Turnock
- Habitat mapping U. Of Idaho Graduate Student Nate Rice
- Occupied Range Mapping in Annual Report



2014-10-18 6:12:01 PM M 3/3 49°F



Funding issues for 2024

- We expect major increases in salaries for employees during 2024 to keep pace with other agencies
- This will increase costs by 25%
- Therefore we are in need of additional funding or we will be forced to reduce effort

2022-08-26 10:22:44

M



57°F



Questions ?