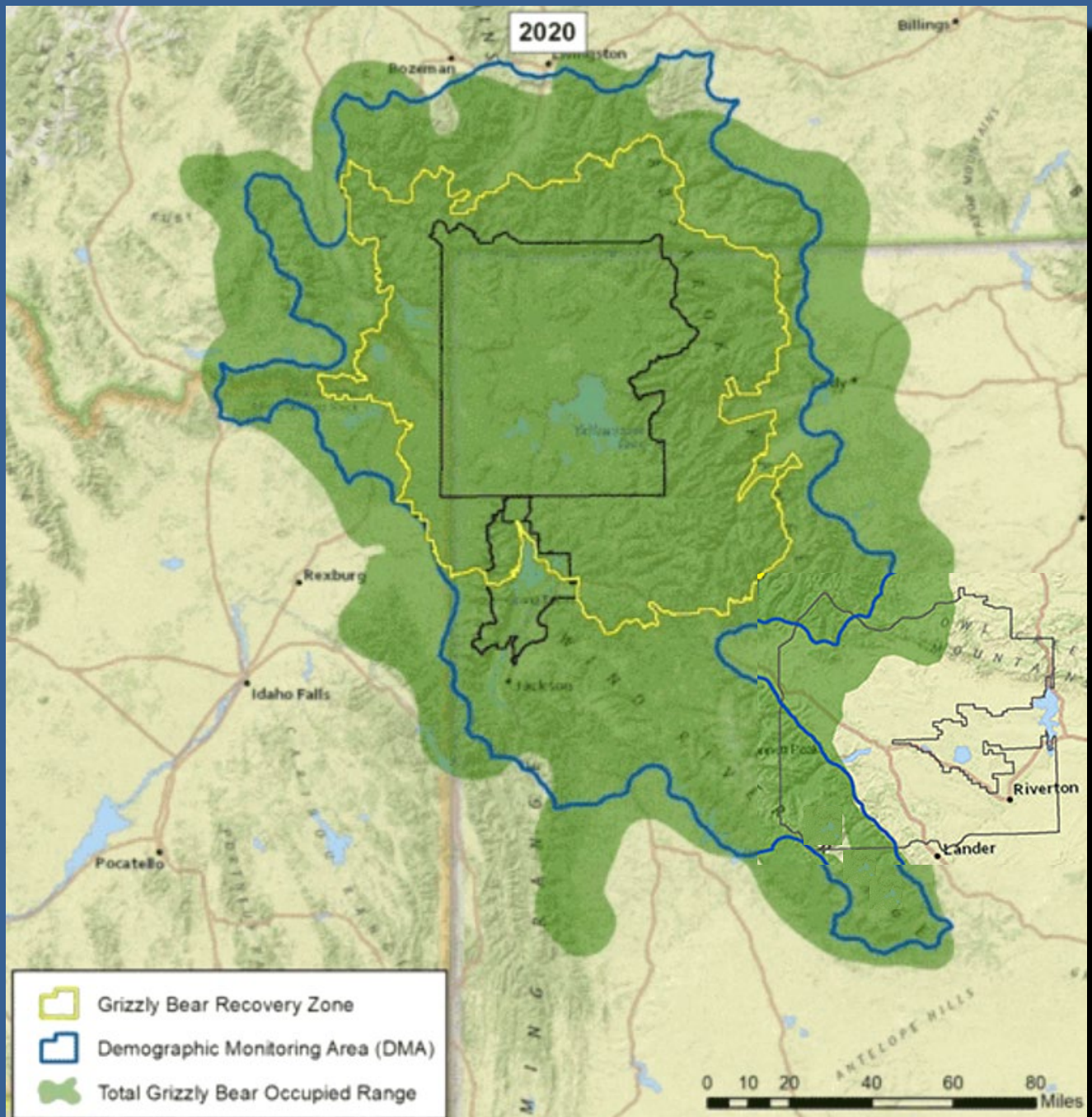




Northern
Arapaho Tribe

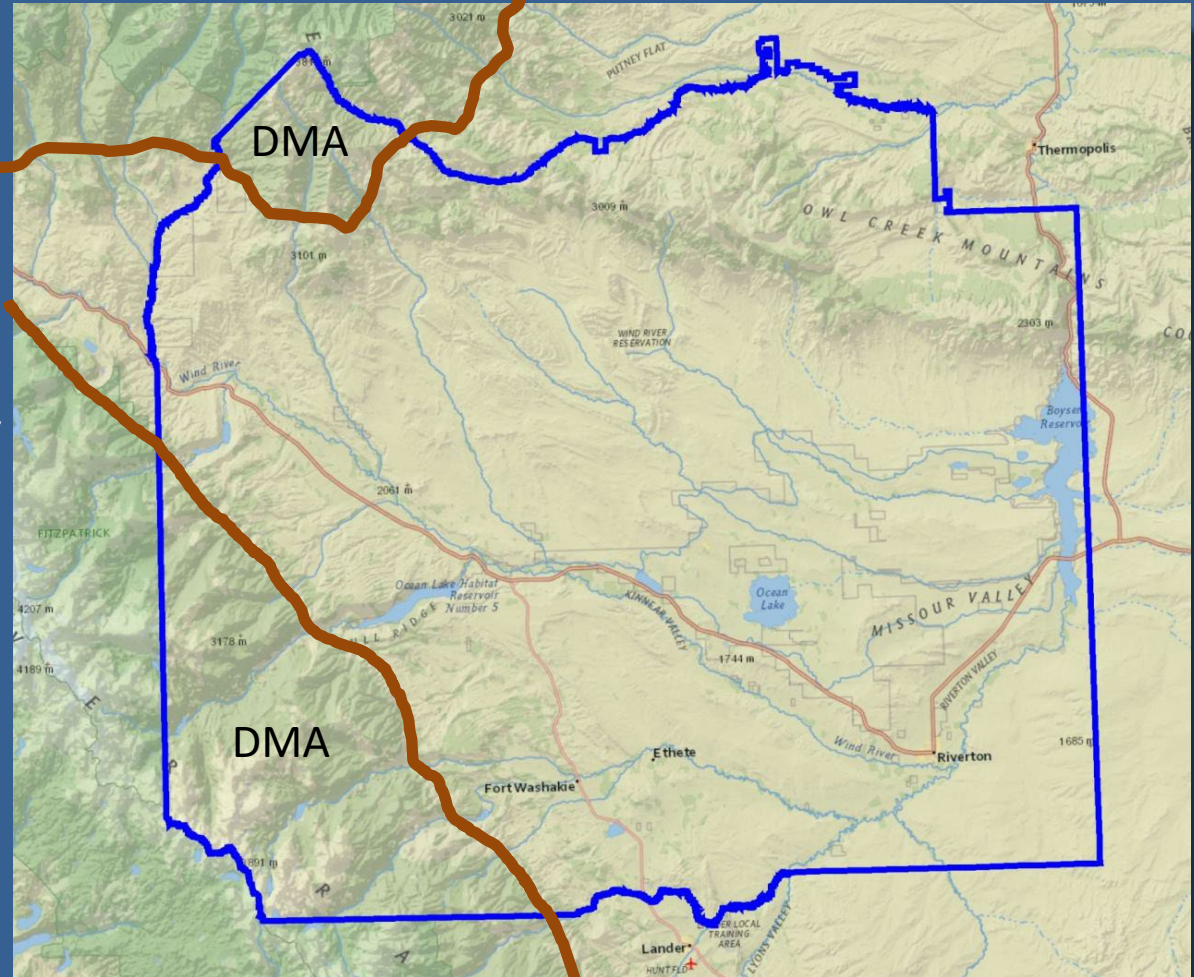


Grizzly Bear Conflict Report Wind River Reservation

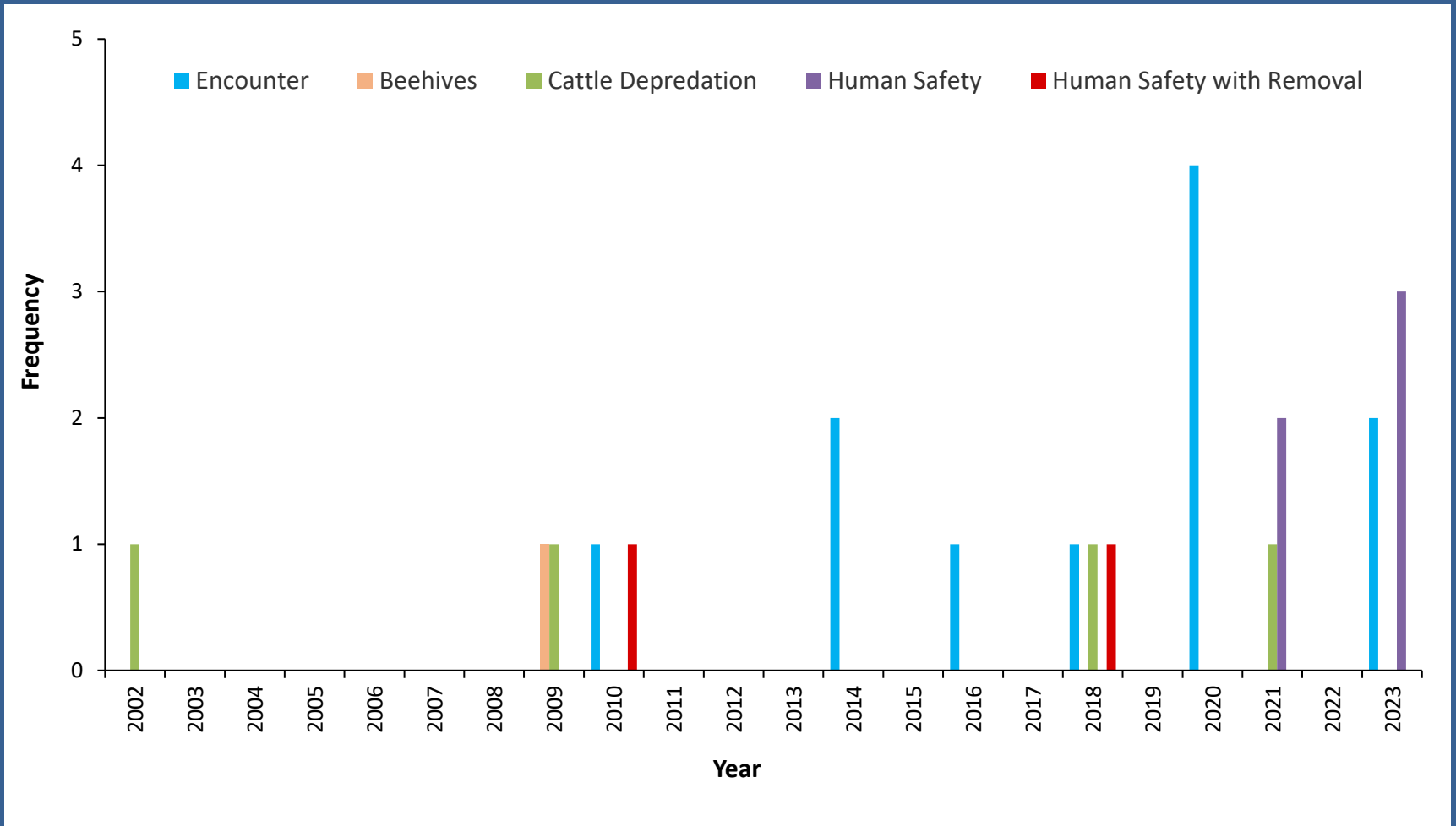


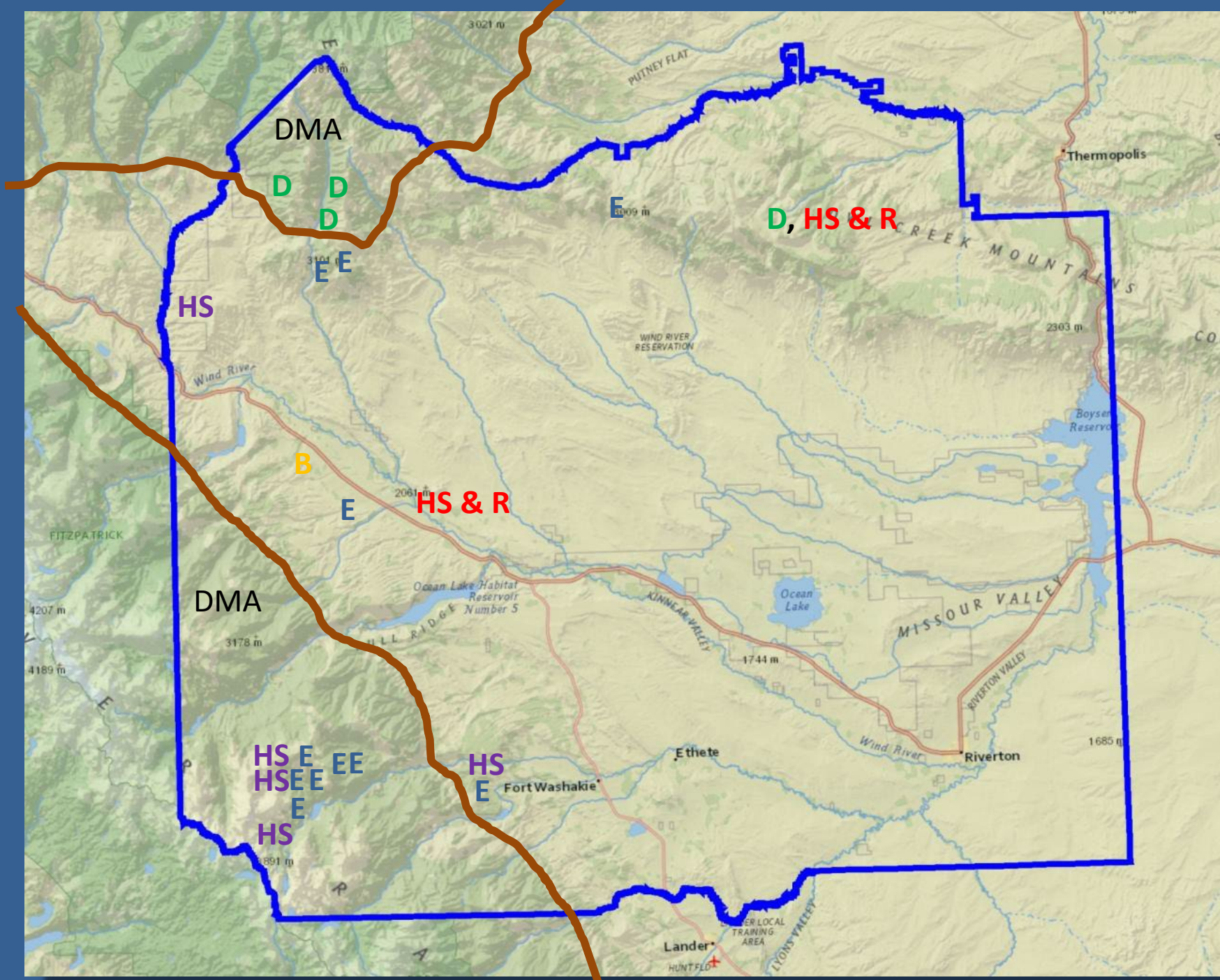
Wind River Reservation

- Est. by Treaty 1868
- 2.2 Million ac. (Tribal control of ~1.8 M)
- Federal Trust Responsibility to provide assistance to Tribes
- USFWS: F&W assisting since 1941, fish stocking since 1910s



Reported Grizzly Bear Encounters and Conflicts Wind River Reservation





DMA

D
D
D

E
E

HS

B

E

HS & R

DMA

HS
E
E
E
E
E
E
E
E
E
E

HS
E

D, HS & R

Lander

Riverton

Thermopolis

Fort Washakie

Ethete

1685 m

Boysen Reservoir

Ocean Lake

Ocean Lake Habitat Reservoir Number 5

WIND RIVER RESERVATION

Wind River

PUTNEY FLAT

MISSOUR VALLEY

RIVERTON VALLEY

Wind River

MINNEAR VALLEY

LYONS VALLEY

CREEK MOUNTAINS

CO

3021 m

3181 m

2009 m

2303 m

2061 m

1744 m

4207 m

4189 m

3178 m

1891 m

FITZPATRICK

E

P

P

A

LOCAL TRAINING AREA

HUNT FLD



3-Week Closure of Wilson Creek Drainage

PUBLIC EVENTS

Bear Awareness Training

ETHETE

MAY 1, 2024 @ 5:30 PM

WYO INDIAN TECH CENTER

STEW & FRYBREAD WILL BE SERVED

FORT WASHAKIE

MAY 2, 2024 @ 5:30 PM

FRANK B. WISE

STEW & FRYBREAD WILL BE

SERVED

**FREE BEAR SPRAY- LIMITED SUPPLY
AVAILABLE FOR PARTICIPANTS ONLY**

