

Bitterroot Ecosystem Subcommittee

Food Storage Working Group



Food Storage Working Group

Bitterroot Subcommittee

- Bryson Bell/Dave Wrobleski USFS Lolo NF
- Sandi Fisher USFWS Idaho Fish and Wildlife Office
- Jennifer Fortin-Noreus/
Morgan Vance USFWS Grizzly Bear Recovery Office
- Jesse Irwin USFS Bitterroot NF
- Scott Jackson USFS Northern Regional Office
- Karryl Krieger/Courtney Frost USFS Salmon - Challis NF
- Jim Lutes/Michele Windsor USFS Nez Perce – Clearwater NF
- Bruce Montgomery/J. Jonkel MFWP Bitterroot Valley Bear Mgmt.
- Diane Probasco USFS Idaho Panhandle NF
- J.J. Teare IDFG Clearwater Reg. Supervisor
- Ally Turner USFWS Idaho Fish and Wildlife Office

Food Storage and Sanitation

- First line of defense
- Minimize potential for conflict
- Improves human safety
- Reduces bear mortality risk
- Effective
- Relevant for many wildlife conflicts, not just bears



Goals

- Integrate I/E/O
- Cooperative approach
- Be consistent
- Be proactive
- Public acceptance
- Develop implementation framework



Key Messages

- Properly storing food, garbage, and other attractants is a good way to avoid conflicts with wildlife, particularly, if you live and recreate in bear country.
- Public land management agencies establish food storage and sanitation guidance to help reduce conflicts with wildlife and to protect public safety.
- Proactive approaches to safety in bear country can help reduce future conflicts.
- This collaborative food-storage and sanitation framework is intended to benefit both people and bears by reducing conflicts and improving human safety in areas where people and bears share the landscape, or where they may share the landscape in the near-future.

Framework Components

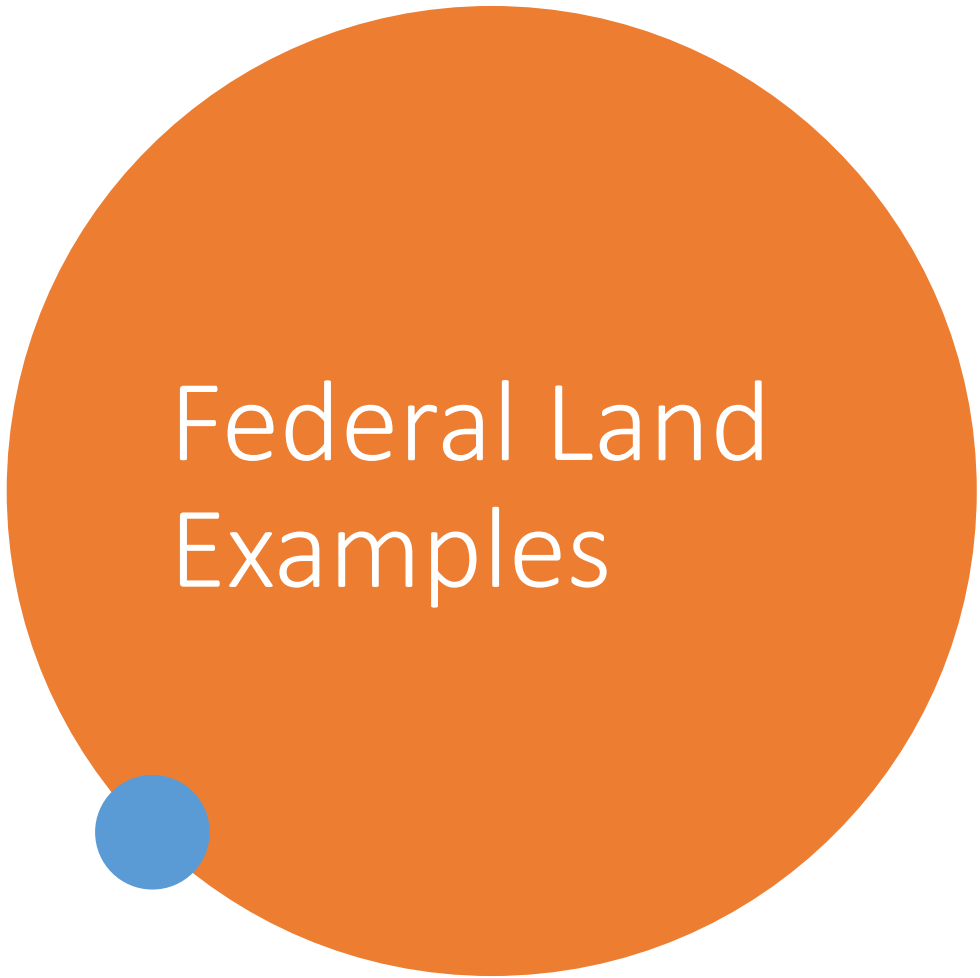
Grizzly bear status triggers management considerations

- “May Be Present”
 - Make a plan and start getting things in place
- “Occupied”
 - Planned actions should be implemented or nearing completion

Recommendations for Federal lands

- Education
- Sanitation
- Regulation

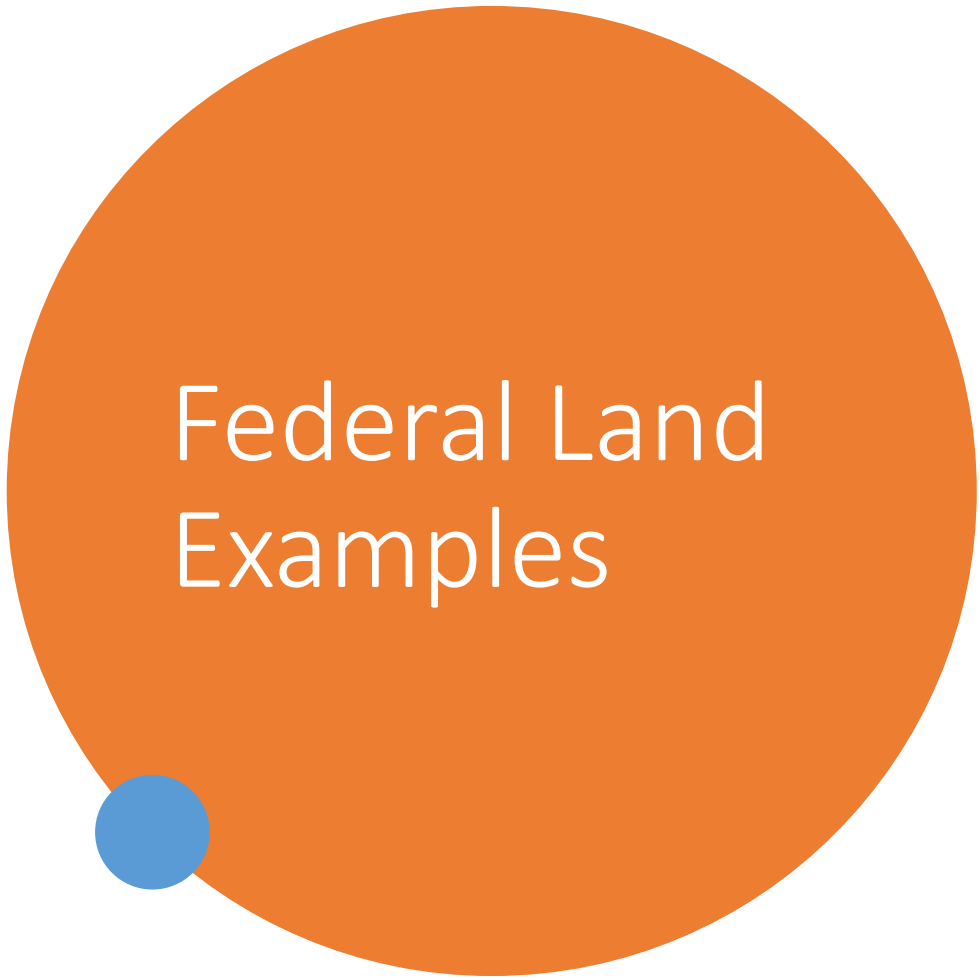
Also includes suggestions for State, Tribal and private lands



Federal Land Examples

Education

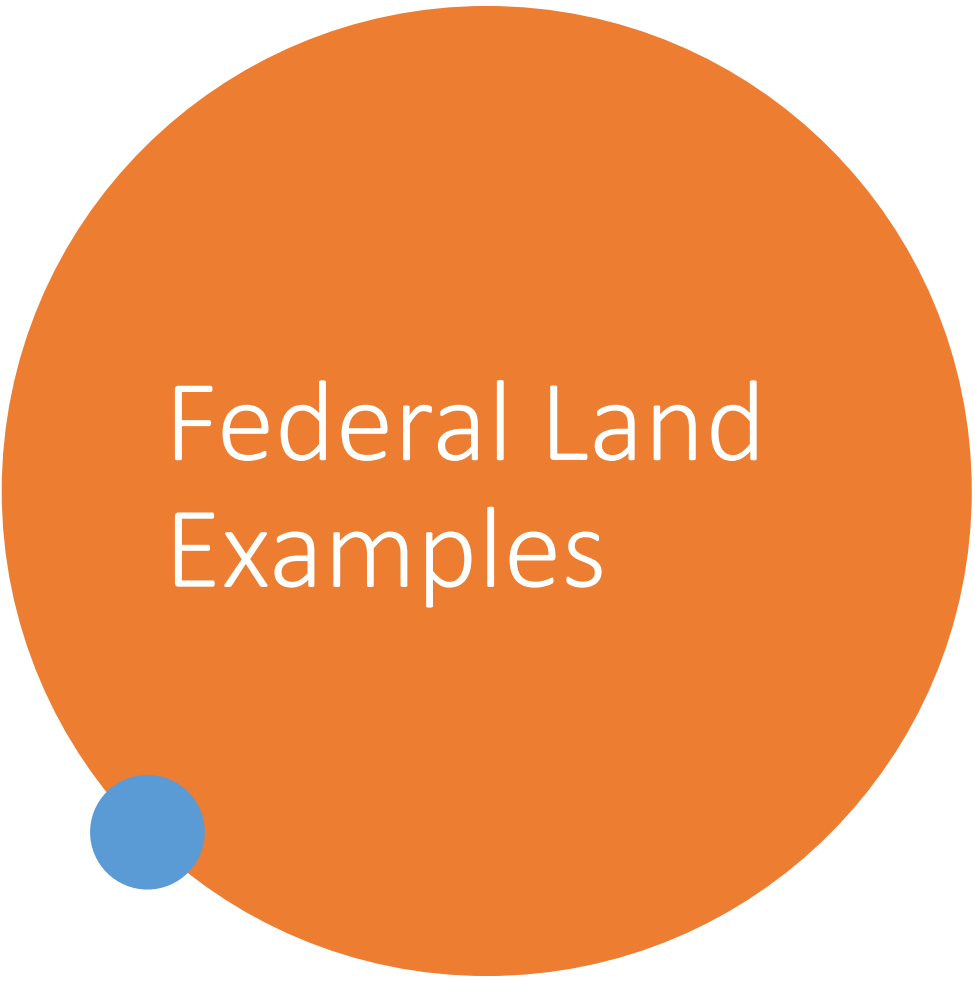
- Signage at recreation sites
- Educate field personnel on proper food storage
- Plan and manage employee bear spray training and availability



Federal Land Examples

Sanitation

- Reduce non-bear-resistant garbage containers at developed recreation sites
- Ensure garbage at admin sites is secure
- Train field crews to follow proper food storage
- Train appropriate staff to provide proper attractant storage education to public
- Assess/provide food storage options at recreation sites
- Develop language to include in appropriate contracts and/or permits



Federal Land Examples



Regulation

- Considerations
 - Consistency with adjacent jurisdictions
 - Need for exemptions (e.g., baiting)
 - Scale of implementation

State and Tribal Examples

- Signage at developed recreation sites
- Language in appropriate contracts/permits

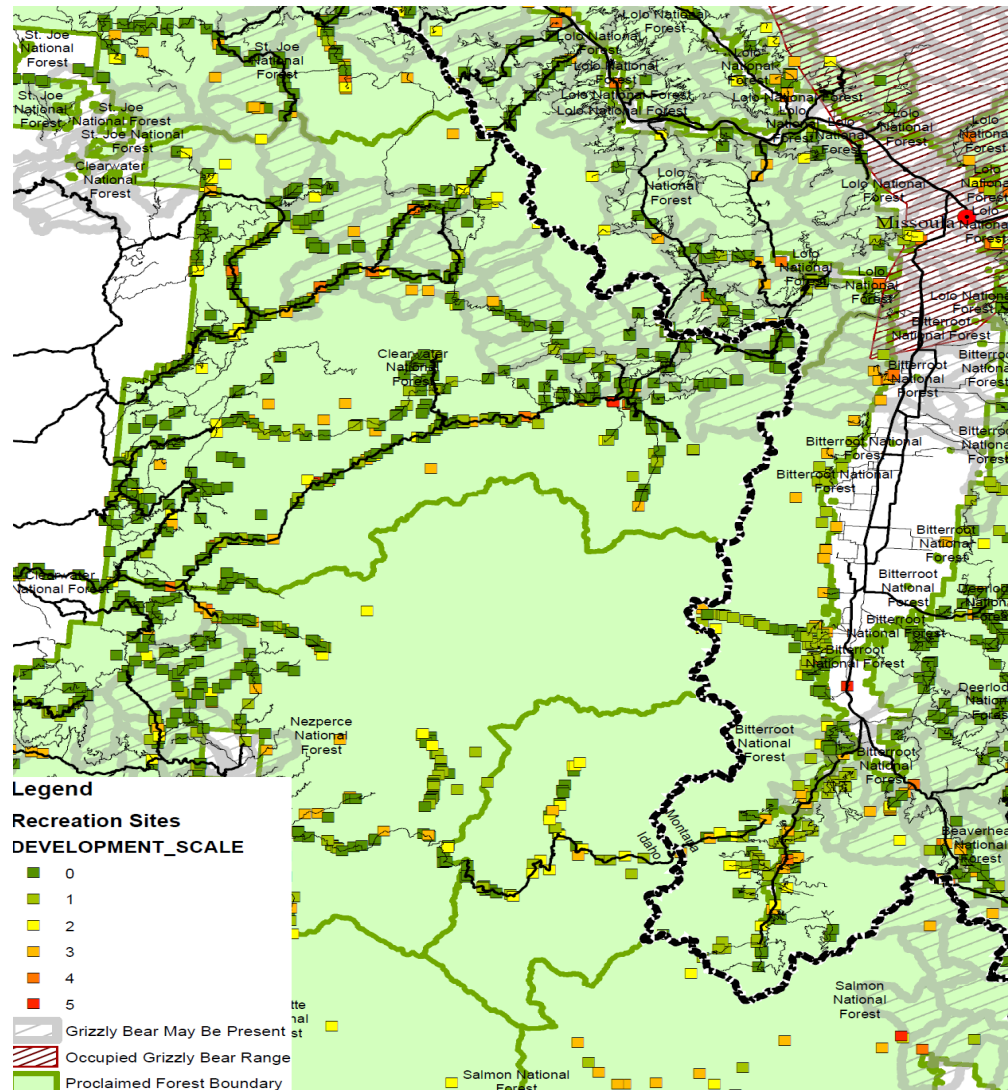


Private Land Examples

- Local governments
 - Garbage at city/county transfer sites; dumpsters at admin buildings
 - Information about issues and options
 - Consider ordinances
- Private landowners
 - Information about issues and options
- Non-Gov't Organizations
 - Working relationships with communities
 - Identify areas of concern
 - Collaborate on solutions



Conceptual map



Next Steps

Subcommittee members provide feedback to Working Group on draft framework

Working Group incorporates feedback received from Subcommittee

Provide revised (final?) draft to Subcommittee members before Spring meeting

Discussion and Feedback

