



# IGBC Bear-Resistant Products Testing Program

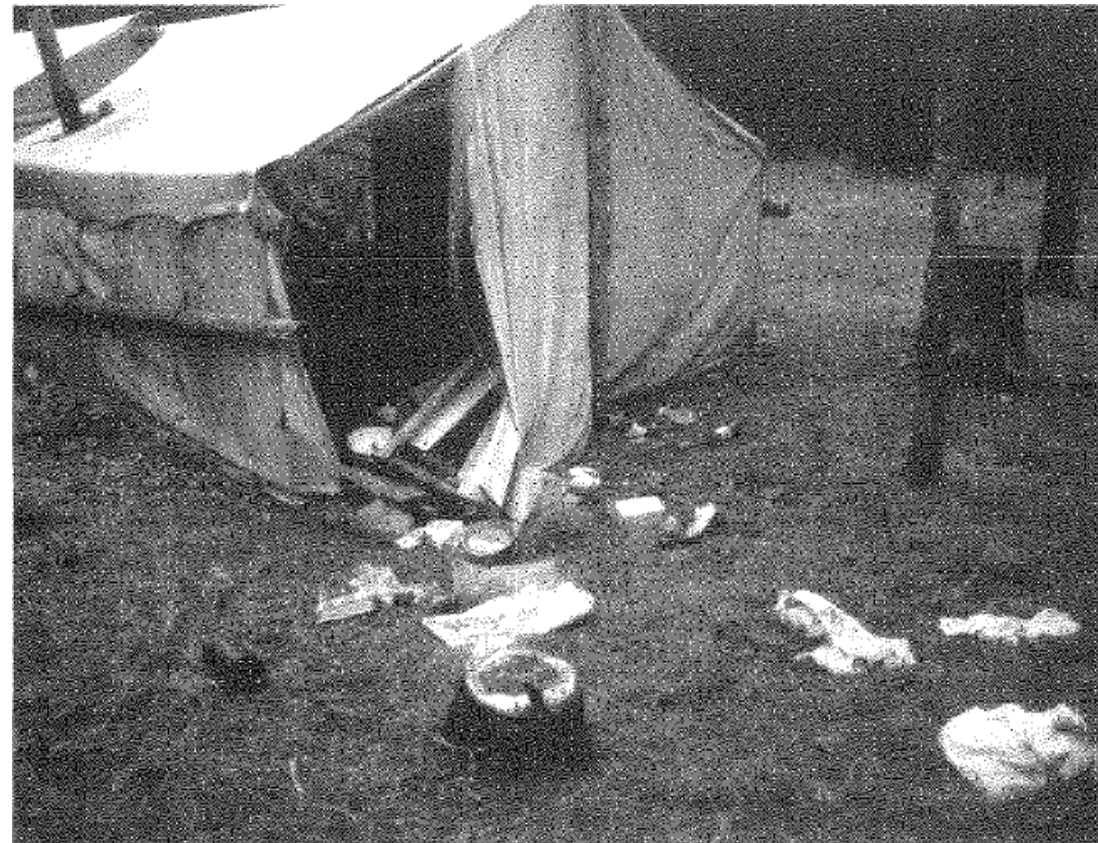
IGBC Executive Committee  
December 18, 2024

# BEAR-RESISTANT CONTAINERS

MINIMUM DESIGN AND STRUCTURAL STANDARDS  
INSPECTION AND TESTING METHODOLOGY

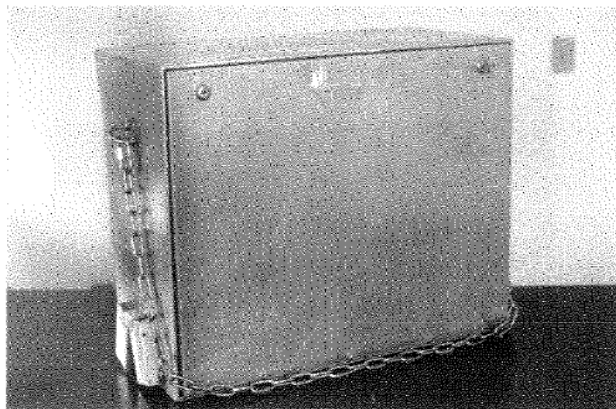
1989

Interagency Grizzly Bear Committee

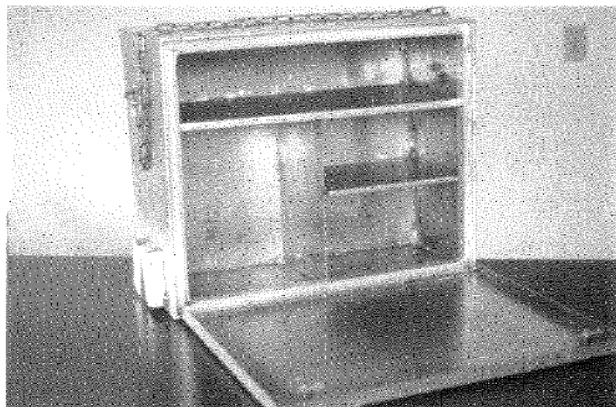




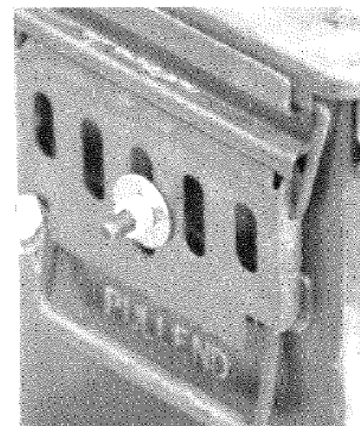
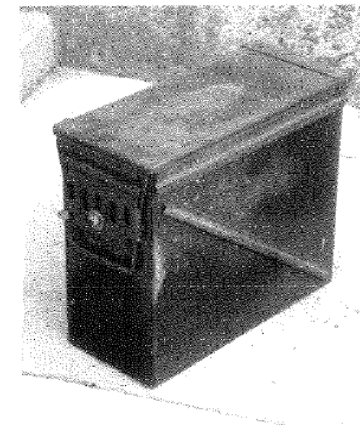
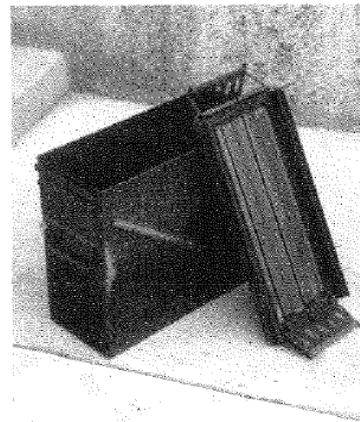
### WELDED ALUMINUM KITCHEN PANNIER



*Door has large steel piano hinge connecting with steel pop rivets and is secured with two key locks. Brackets on the side of each pannier accommodate legs for setup as a kitchen.*



### MILITARY SURPLUS CONTAINER



*Lid must be modified so it can be locked down.*



**US GI  
20mm  
CANS**

Constructed of heavy gauge steel to U.S. Government specs, they feature a steel top with rubber water tight seal. Can lid hinges from either end or removes completely. Condition: Excellent (like new). Measures: 8" W x 15" H x 16" L. Weight: 20 lbs. Holds approximately 2000 rds of .223 or over 1000 rds of .30 cal. Once you've used these big beauties for storage or whatever — you'll want more and more of them. Cans have all original O.D. paint and are practically-un-used. We'll ship your order for ammo, accessories, etc. in or with a can.

*Typical Advertisement*





# IGBC Bear-Resistant Products Testing Program

- Important for bear conservation
  - All grizzly bear ecosystems
  - Between grizzly bear ecosystems
  - Areas with only black bears
- Effective
- Visible
- Important partnerships
  - Agencies (State, Federal, Tribal, Local)
  - Public
  - Manufacturers
  - Waste Haulers





# Program Components

- Product testing
  - Record keeping/documentation
    - Consistency
  - Administration
    - Website maintenance
    - Invoicing/fee collection
    - Scheduling
- Information requests
- Database management
- Monitor product status



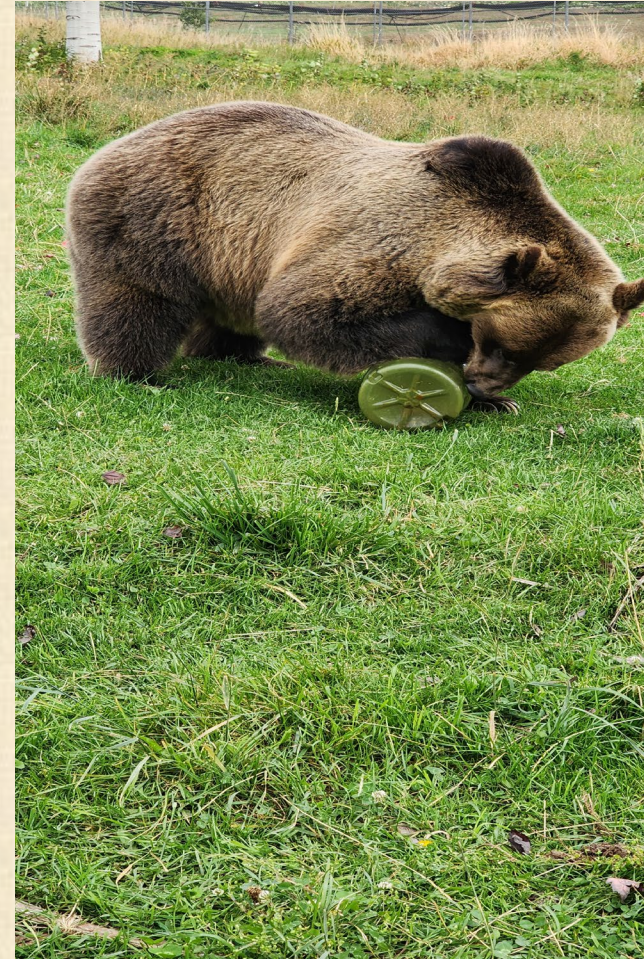


# Grizzly & Wolf Discovery Center



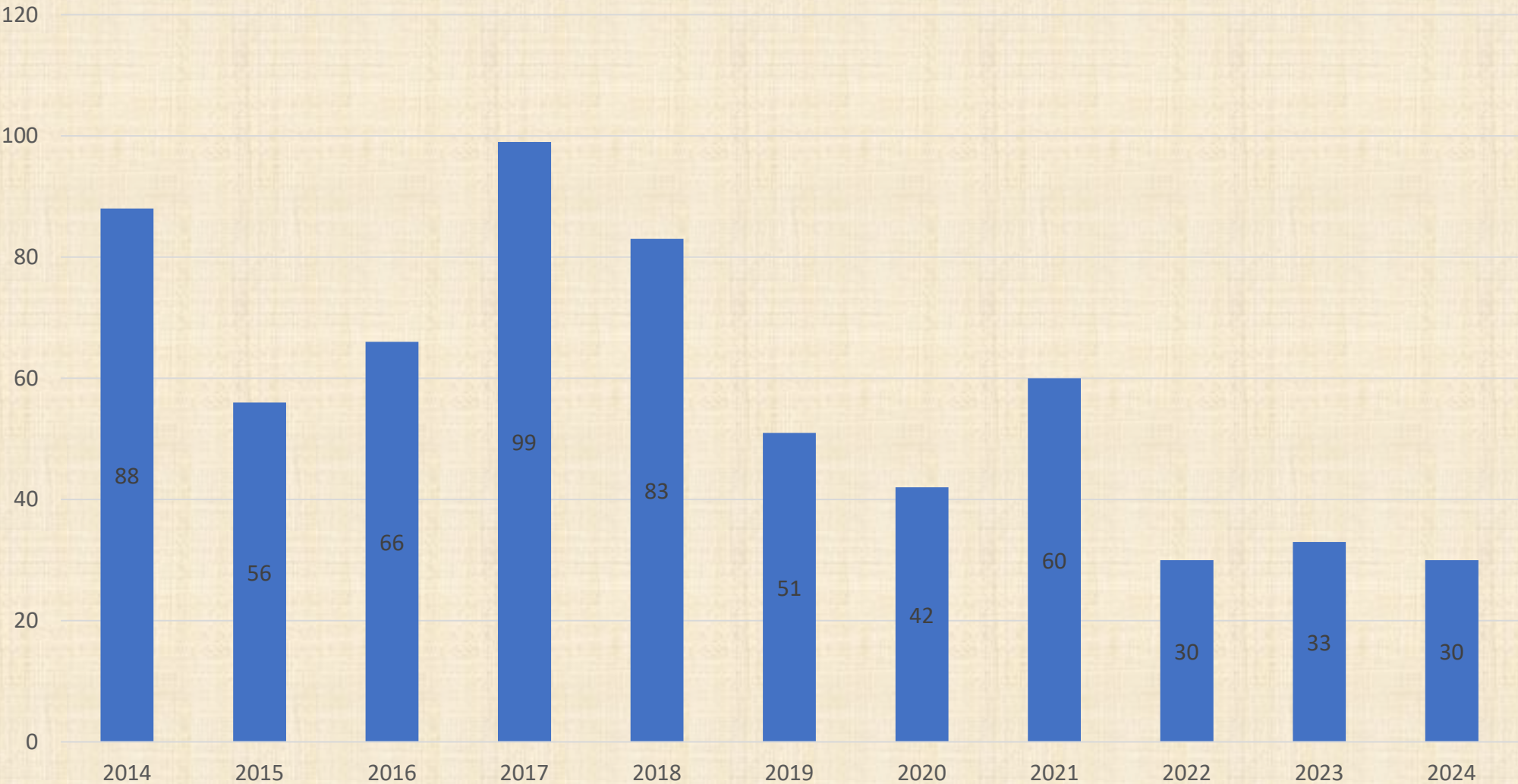


# Washington State University Bear Center





# # Products Evaluated



# 2024 Test Results



## 30 products tested

- 15 coolers (3 pass/12 fail)
  - 3 garbage carts (1 pass/2 fail)
  - 2 backpacking canisters (2 pass/0 fail)
  - 2 backpacking sacks (1 pass/1 fail)
  - 2 cargo boxes (0 pass/2 fail)
  - 1 composter (fail)
  - 1 steel dumpster (pass)
  - 1 storage box (fail)
  - 1 metal garbage can enclosure (fail)
  - 1 metal trash bin (fail)
  - 1 accessory (Bear Bolt) (pass)
- 
- 30% pass (9 of 30)





# 2024 Funding

- \$32,800 total testing fees collected
- \$22,250 testing revenue to WMI
- \$10,700 administrative fees collected
- \$10,000 IGBC support
- **\$42,950 Total**
- Annual program costs (\$42,900) were covered



# Information Requests

- Public requests for information
- Agency requests for advice
- Manufacturer inquiries
  - **Unusual products** (conflict management)
    - Air horn
    - Odor eliminator
    - Power poles
    - Building materials
    - Chicken coops
    - Food hanging system
    - Repellent
    - Underground garbage vault
    - Cooler locks
    - Hitch mounted cargo boxes
    - Camping trailers
    - Boots





# Innovative Products









# Ongoing Program Advancement Efforts

## **Operational**

- Transfer of info and money between program partners
- Other information to public

## **Sustainability**

- Administrative fee notices and collection
  - Simplify lists of certified products





# Thank you!

Patti Sowka - Living with Wildlife Foundation (through WMI)

Chris Wiese, Randy Gravatt and John Heine  
Grizzly & Wolf Discovery Center

Chelsea Davis and Charlie Robbins  
Washington State University Bear Center

Chris Smith, Meghan Gilbert – Wildlife Management Institute

David Diamond - IGBC



Questions?

