

# GYC and USFS

## Celebrating a 15-Year Partnership



Honored Guest:

**Scott Christensen; GYC Executive Director**

**Dan Tyers; GYE Grizzly Bear Habitat Coordinator**

# Celebrate with IGBC:

## Sharing the story:

- How did this begin?
- Funding and Accomplishments
- Lessons Learned

## Remembering:

- Why our work matters
- The inestimable value of a sincere partner

# Catharsis With Phil Collins

“I can feel it coming in the air tonight...”

“And I’ve been waiting for this moment, for all my life...”





# GYC and USFS Collaborative Projects



Campground Infrastructure  
- Attractant Storage



Secure Habitat - Roads







# How did this begin?

## Tragic event



“Pain is the gift nobody wants”

– Phillip Yancey

# How did this begin?

## INVESTIGATION TEAM REPORT

Attacks by a grizzly bear in Soda Butte Campground on the Gallatin National Forest on July 28, 2010

August 13, 2010

### Investigation Team Members<sup>1</sup>:

Montana Fish Wildlife and Parks Department, **Kevin Frey**, Bear Management Specialist, Bozeman, MT

Montana Fish Wildlife and Parks Department, **Sam Shepard**, Warden Captain, Bozeman, MT

National Park Service, **Kerry Gunther**, Bear Management Supervisor, Yellowstone National Park, WY

University of Calgary, **Stephen Herrero**, Environmental Science Program, Faculty of Environmental Designs, Calgary, AB, Canada.

U.S. Fish and Wildlife Service, **Chris Servheen**, Grizzly Bear Recovery Coordinator, Missoula, MT

U.S. Forest Service, **Dan Tyers**, Yellowstone Grizzly Specialist, Bozeman, MT

Wyoming Game and Fish Department, **Mark Bruscano**, Bear Management Supervisor, Cody, WY

# Investigation Team Report

## Management Recommendations

**With more bears & more people in more places:**

Are the agencies prepared to manage developed recreation sites?

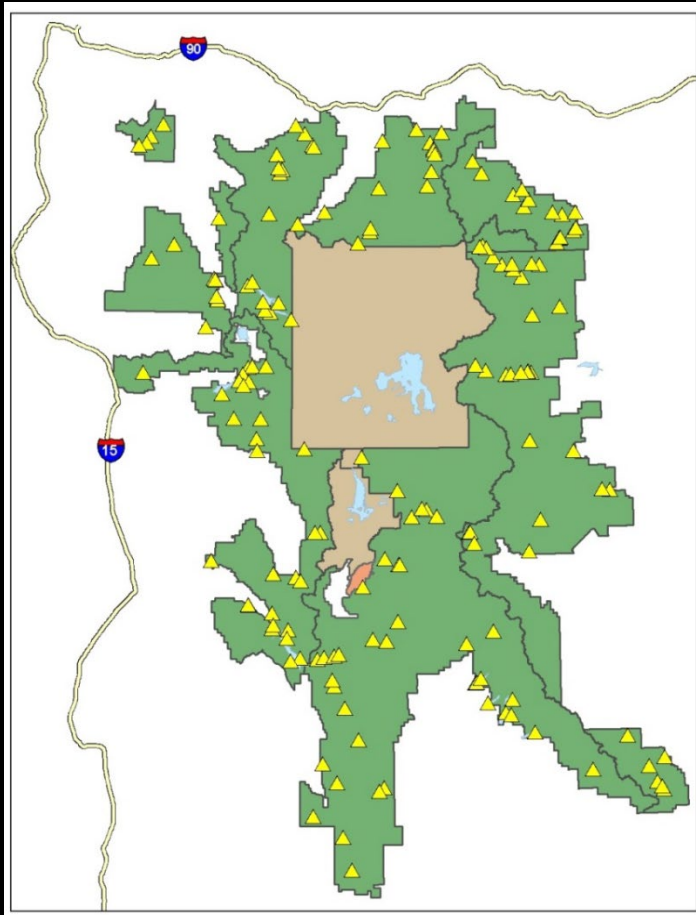
- Sanitation
- High bear density
- Lack of awareness



# FS commissioned a GYE-wide assessment

## 164 Campgrounds

### Infrastructure Inventory





# GYE Campground Assessment

## Campsite attractant storage



## Dumpsters



## Kiosks



## Gates



Forest Service

# Will you share the costs?

## A new business model



- by the better angels of our nature



# Building Trust With GYC & FS

- **Science based**
- **Measurable outcomes**
- **Large-scale and long-term**
- **Collaborative**

# Wapiti Campground – Shoshone National Forest

## How it looks in GIS



- Campsite
- Campsite with Bear Box
- Communal Bear Box
- ◆ Bear-resistant dumpster
- ◆ Information board
- ◆ Other features

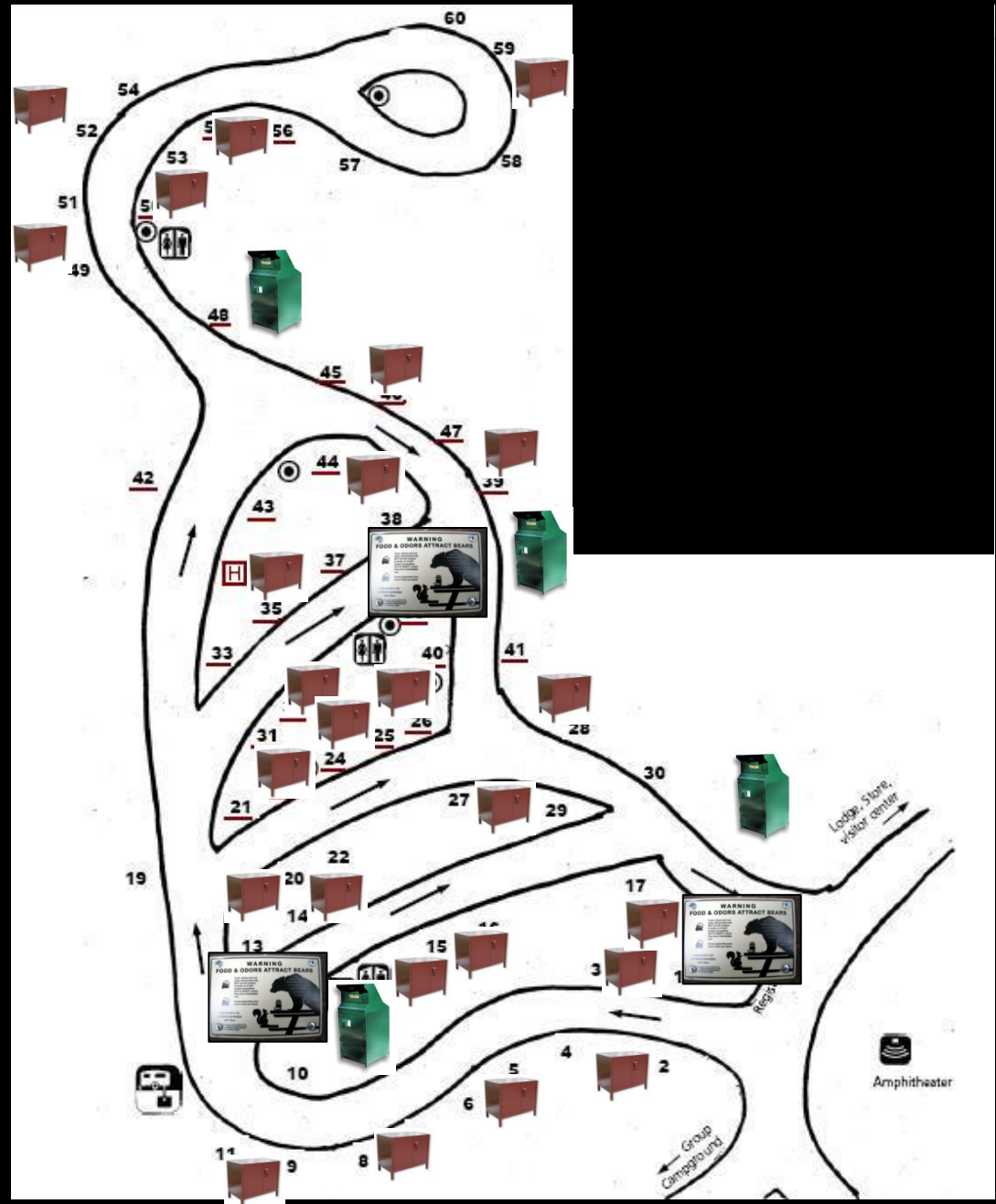


# Infrastructure Calculations

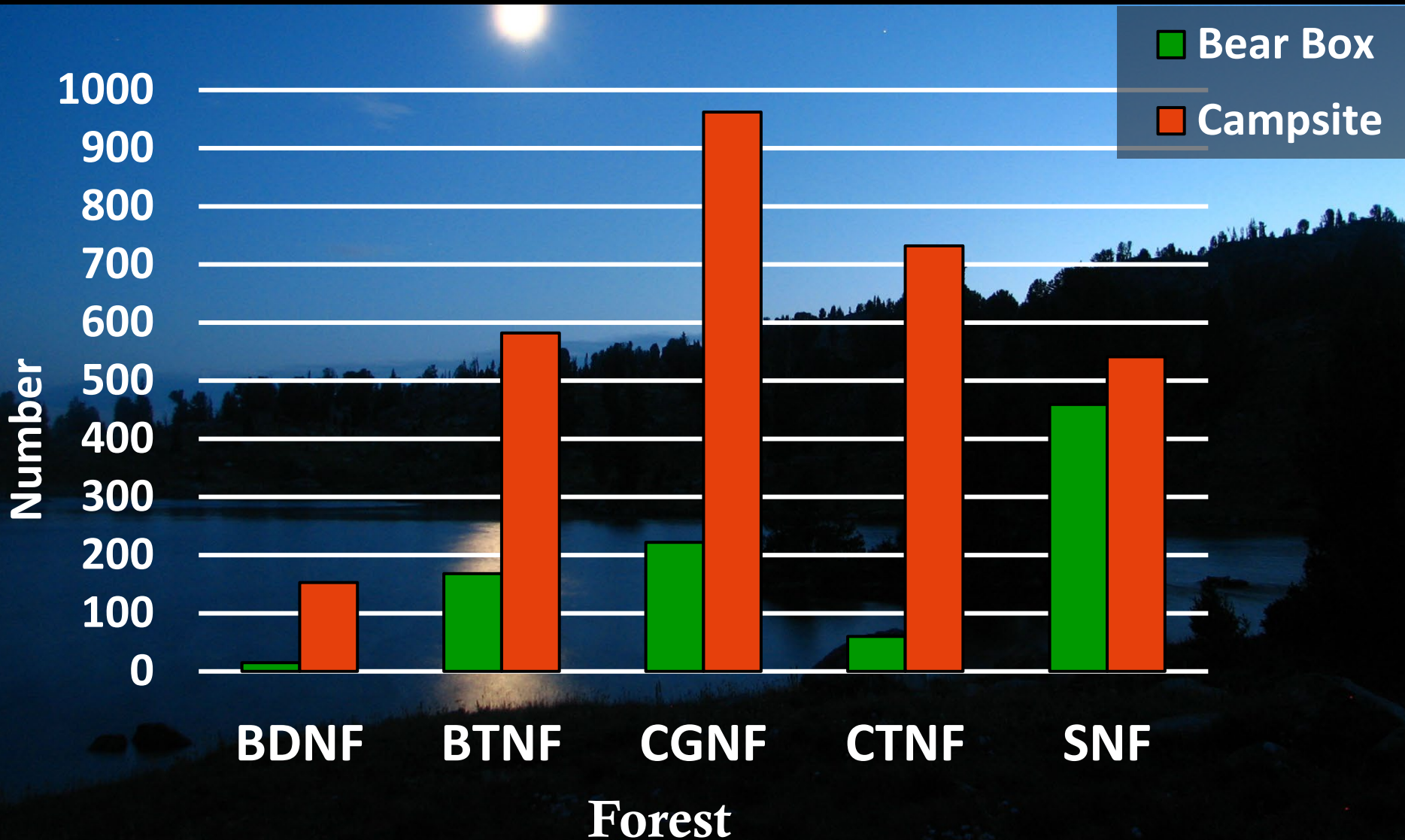
3 information boards  
/ 60 campsites

4 trash dumpsters  
/ 60 campsites

25 food storage boxes  
/ 60 campsites



# Number of Bear Boxes in Forest Service Campgrounds Pre-2014 (By Forest)



# Making a Case (Geeking Out!)

Campground conflict risk model  
164 Campgrounds – prioritizing need

Occupancy

X

Mortality

=

*Campground  
Assessment Model*

Bear presence  
(averaged over 21  
years)

X

Human activities  
(averaged over daily  
activity radius of  
female grizzly)

=

**Conflict  
Potential**



# Infamous Top 20 Conflict Risk Results

## Forest Service Campgrounds - Grizzly Bear Conflict Risk

Risk Rank	CAMPGROUND	NATIONAL FOREST	Normalized GB Occupancy	Normalized GB Mortality	RISK (Occupancy x Mortality)	
<b>HIGHER RISK</b>	1	Eagle Creek	Shoshone	0.8235	0.9420	0.7758
	2	Hunter Peak	Shoshone	0.7647	0.9502	0.7267
	3	Rainbow Point	Gallatin	0.6471	1.0000	0.6471
	4	Three Mile	Shoshone	0.9412	0.6196	0.5832
	5	Colter	Gallatin	0.5294	0.9324	0.4936
	6	Horse Creek	Shoshone	0.8235	0.5816	0.4790
	7	Lonesomehurst	Gallatin	0.4706	0.9851	0.4636
	8	Chief Joseph	Gallatin	0.5294	0.7751	0.4103
	9	Soda Butte	Gallatin	0.5882	0.6724	0.3955
	10	Turpin Meadow	Bridger-Teton	0.6471	0.6101	0.3948
	11	Tom Miner	Gallatin	0.6471	0.6019	0.3895
	12	Crazy Creek	Shoshone	0.5294	0.7039	0.3726
	13	Little Sunlight	Shoshone	0.5882	0.6233	0.3666
	14	Newton Creek	Shoshone	0.6471	0.5378	0.3480
	15	Rex Hale	Shoshone	0.4706	0.7181	0.3379
	16	Flatrock	Targhee	0.3529	0.9346	0.3299
	17	Bakers Hole	Gallatin	0.4706	0.6922	0.3257
	18	Buffalo	Targhee	0.4118	0.7792	0.3209
	19	Cherry Creek	Gallatin	0.4706	0.6756	0.3179
<b>LOWER RISK</b>	20	Brooks Lake	Shoshone	0.5294	0.5271	0.2791



# GYC – Think Bigger!

1-1 match – 164 campgrounds





# 5 GYE Forests

## Campground Assessments Summary

### 1:1 Match

USDA Forest Service

Campground Bear-Safety Assessment

Shoshone National Forest



#### Contents

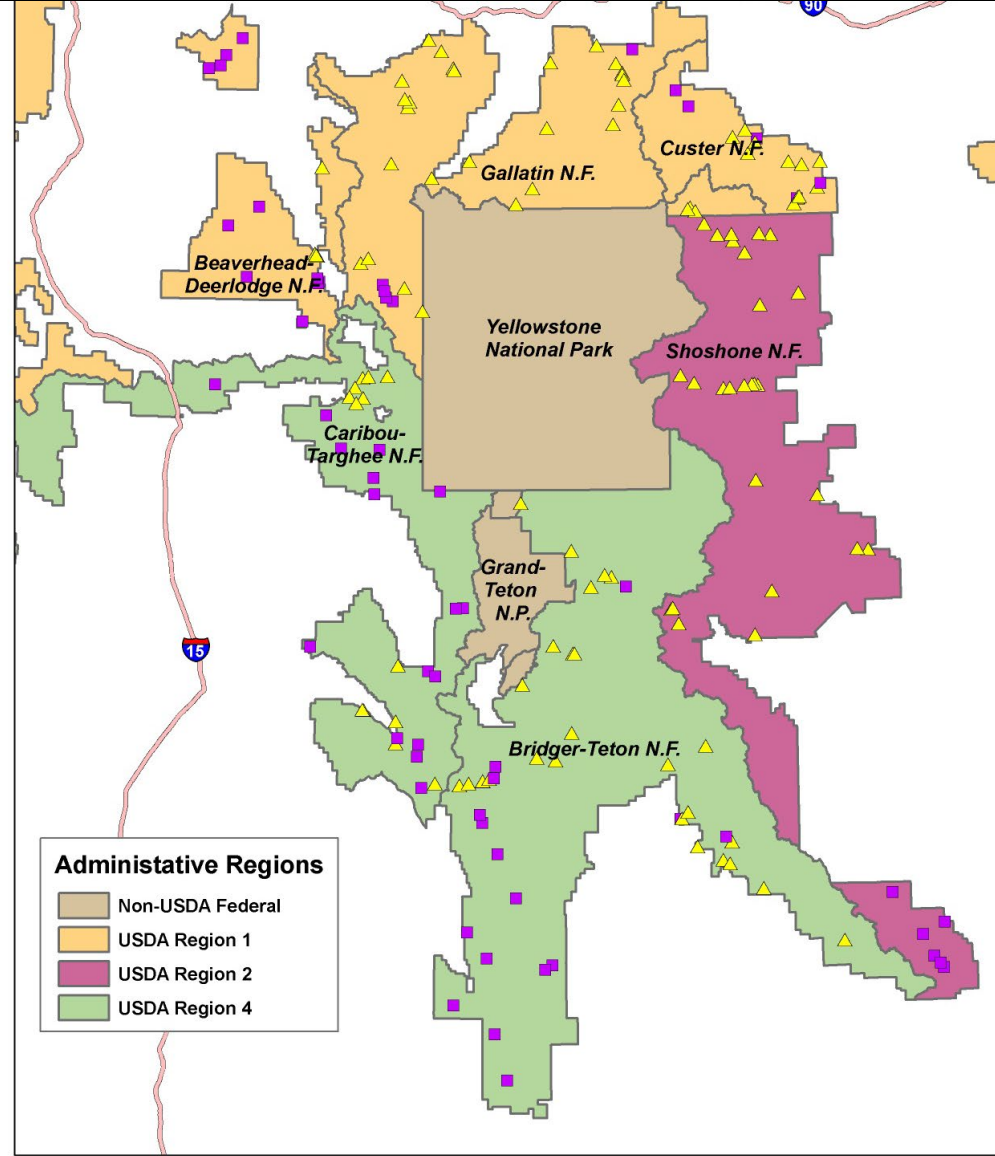
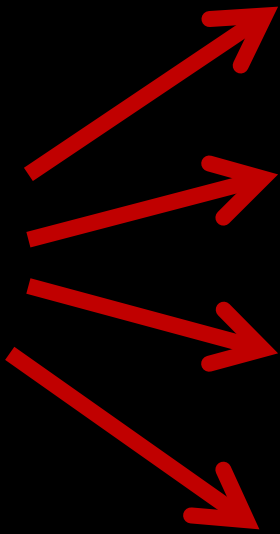
Background Information .....	2
Ecosystem-Wide Campground Means .....	6
Shoshone National Forest Means .....	7
Beartooth Lake Campground .....	8
Big Game Campground .....	10
Brooks Lake Campground .....	12
Brown Mountain Campground .....	14
Clearwater Campground .....	16
Crazy Creek Campground .....	18
Dead Indian Campground .....	20
Deer Creek Campground .....	22
Dickinson Creek Campground .....	24
Double Cabin Campground .....	26
Eagle Creek Campground .....	28
Elk Fork Campground .....	30
Falls Campground .....	32
Fiddlers Lake Campground .....	34
Fox Creek Campground .....	36
Horse Creek Campground .....	38
Hunter Peak Campground .....	40
Island Lake Campground .....	42
Jack Creek Campground .....	44
Lake Creek Campground .....	46
Lilly Lake Campground .....	48
Little PoPo Agie Campground .....	50
Little Sunlight Campground .....	52
Louis Lake Campground .....	54
Newton Creek Campground .....	56
Pinnacles Campground .....	58
Rex Hale Campground .....	60
Sinks Canyon Campground .....	62
Threemile Campground .....	64
Wapiti Campground .....	66
Wood River Campground .....	68
Worthern Meadow Campground .....	70

# Voluntary Forest Participation

Dinner jacket, not a straight jacket



# Mitigation: Infrastructure GYE – wide





# A Proven Partnership

## 1.5 Million (1:1 match)



# We aren't done yet...

## Periphery & Corridors

Campground infrastructure phase two:

- Forest by Forest wish list to fill the gaps
- \$850,000 - \$1,000,000 (1:1 match – in kind)





# **GYC-FS Partnership Project**

Developed site mitigation worked!

What's next?

## **Project 2: Closing Closed Roads**



# Value of Secure (roadless) Habitat (GYE Conservation Strategy)

## Grizzly bear – and wildlife





# Target:

Negate roads that are  
legally,



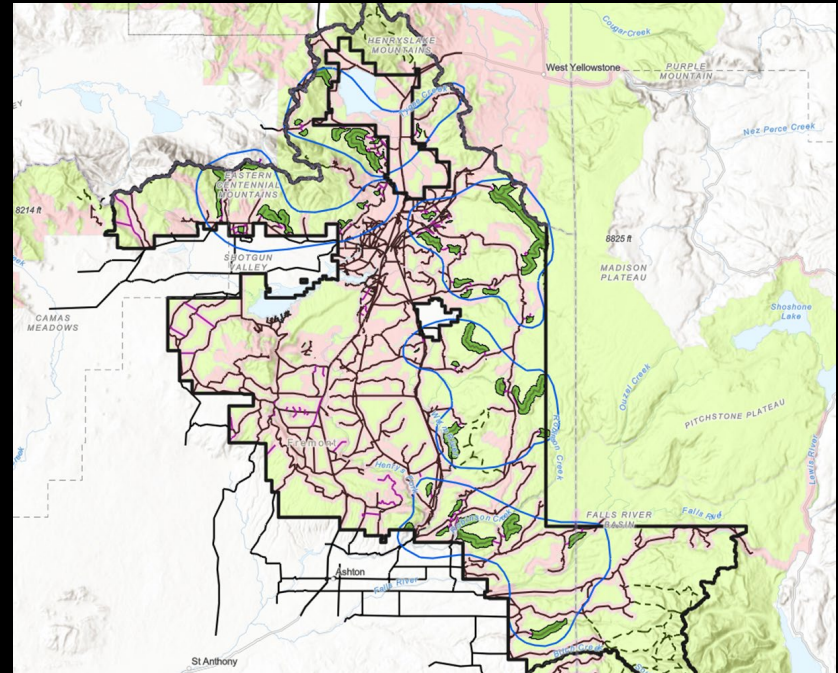
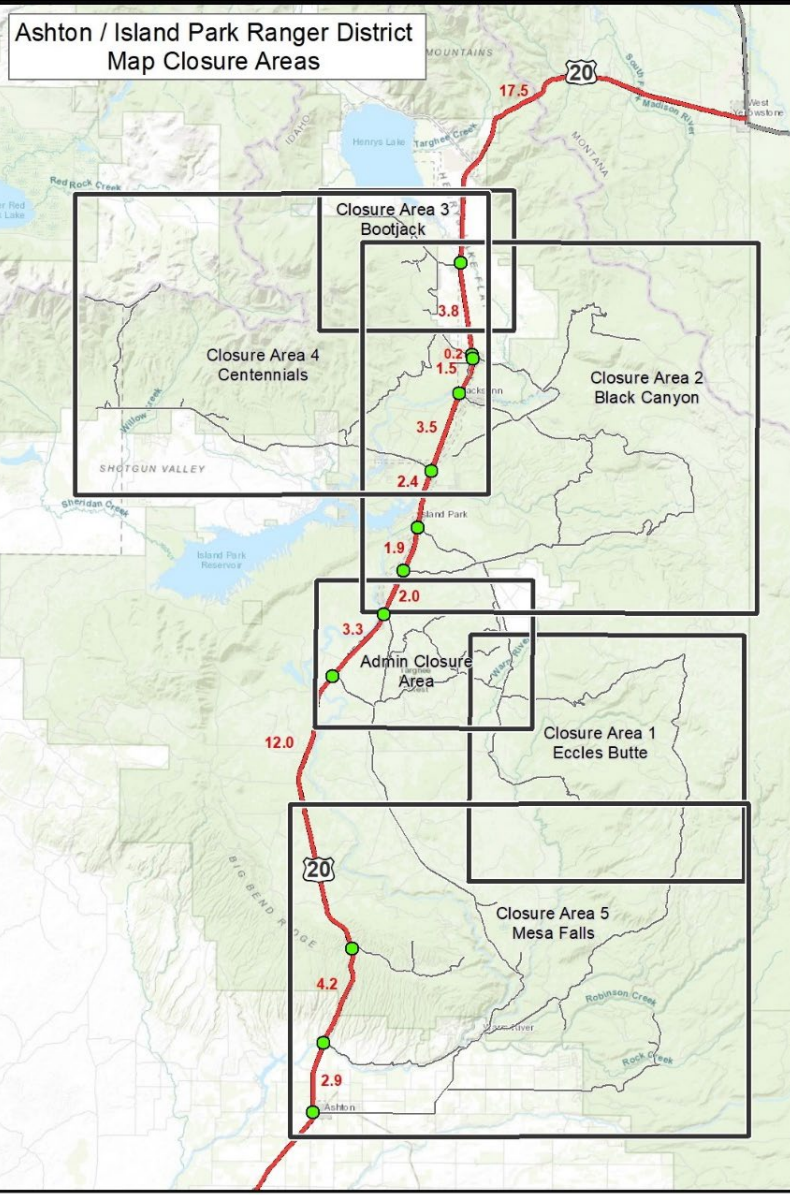
but not functionally closed



# CT Example

## Preparation

- Inventory unwanted routes
- Match to:
  - grizzly bear access model map
  - Travel plan map
- Identify Targets – existing NEPA
- Public Outreach





# CT Example

167 miles of closed road closed  
Significant realized increase in secure habitat





# Secure Habitat Project

Forest by Forest Investment To Date:

- GYC - \$500,000
- FS - \$500,000 (in kind)

Future:

- GYC - \$125,000 annually as needed



# GYC and FS Collaborative Projects

## Lessons Learned



- There is a need
- Homework = trust
- Leverage of leadership
- Persistence and problems
- It's a story - it matters



Campground Infrastructure –  
Attractant Storage



Secure Habitat - Roads





# Celebrating Successful Collaboration



- Trust
- Combined resources
- Measurable benefits



Campground Infrastructure – Attractant Storage



Secure Habitat - Roads





# It's a Story

From a tragic, ill-fated camping trip –  
an imperfect but meaningful and sincere response.

# Catharsis From Bruce Springsteen



- Dancing in the dark
- Can't start a fire without a spark
- This gun's for hire

**GYC – Thank you for providing the spark!**

