



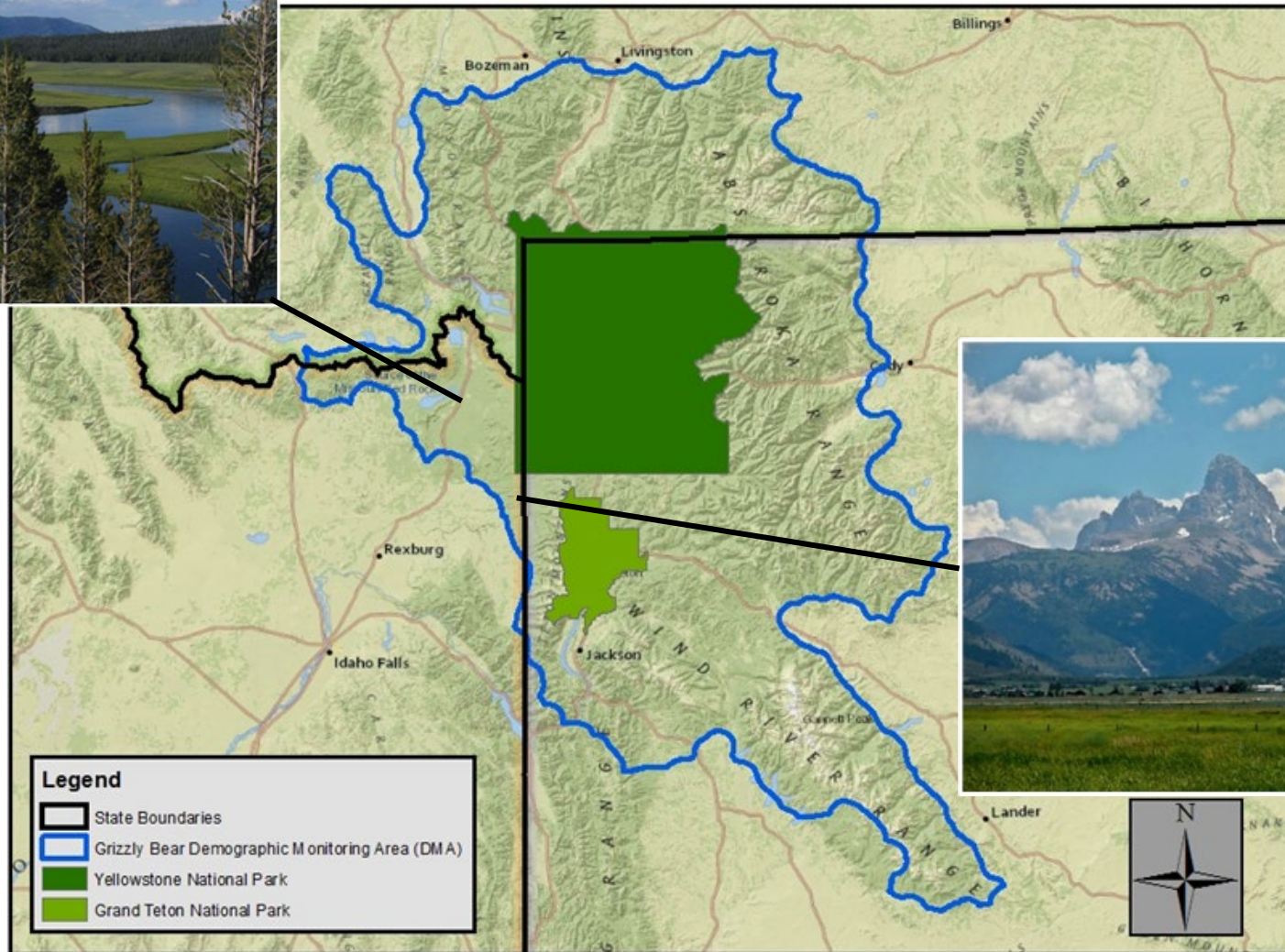
GRIZZLY BEAR CONFLICTS IN THE GYE PORTION OF IDAHO
2024

Cade Bowlin, Idaho Department of Fish and Game

GRIZZLY BEAR CONFLICTS IN SOUTHEAST IDAHO



Island Park



Teton Valley

CONFLICT MANAGEMENT

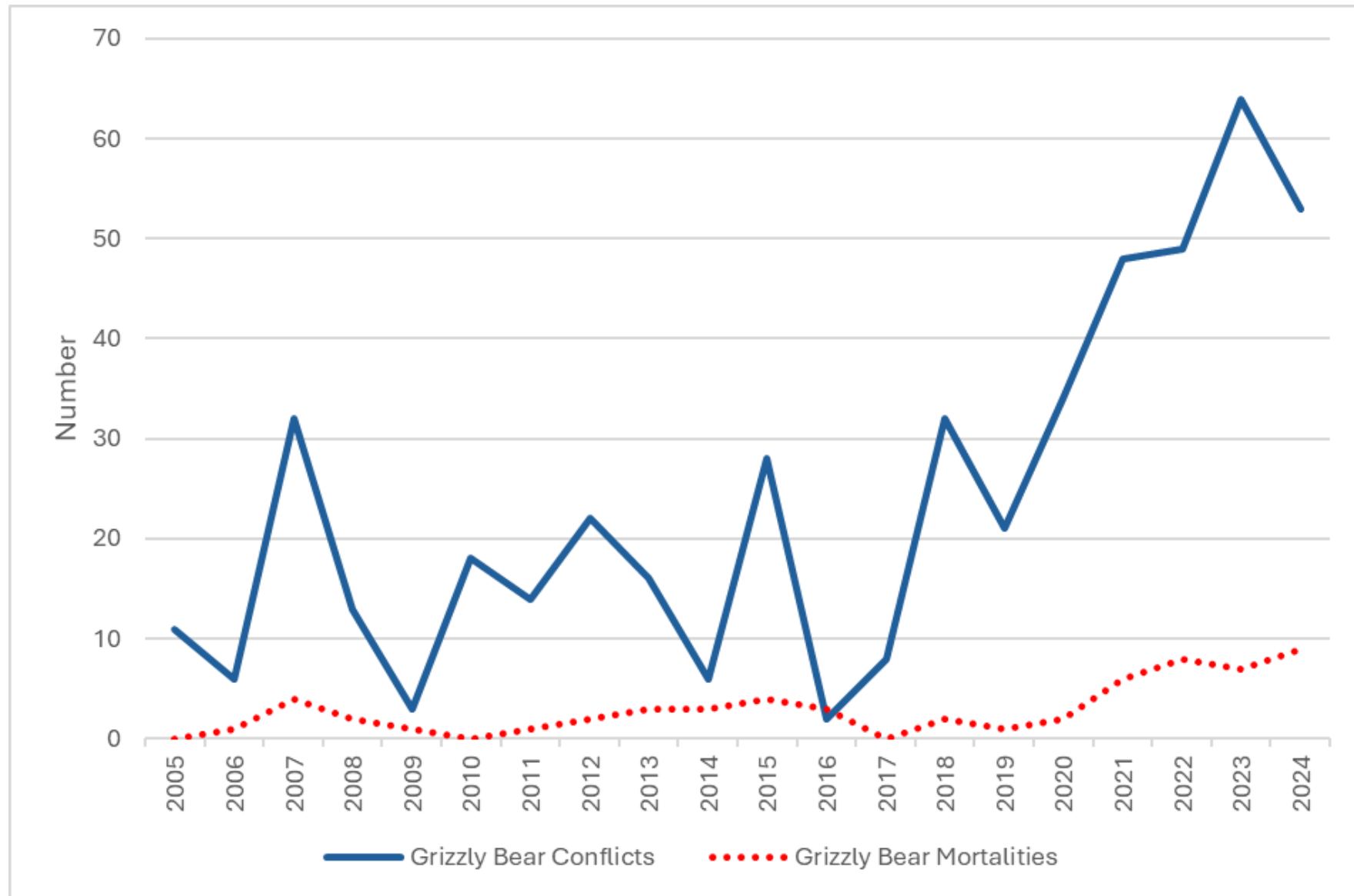


Fig. 1. Frequency of grizzly bear conflicts and grizzly bear mortalities in the Idaho portion of the Greater Yellowstone Ecosystem, 2005–2024.

Table 1. Human-grizzly bear conflicts by type in the Idaho portion of the Greater Yellowstone Ecosystem, 2024.	
Conflict Type	Number of Conflicts
Livestock -cattle	29
Other conflict types	10
Unnatural foods-garbage	9
Property damage-building	2
Unnatural foods-livestock/pet foods	1
Property damage-vehicle	1
Human injury	1
Total Conflicts	53





Figure 2. Locations of human-grizzly bear conflicts in the Idaho portion of the Greater Yellowstone Ecosystem, 2024.

Table 2. Confirmed grizzly bear mortalities in the Idaho portion of the Greater Yellowstone Ecosystem, 2024.

Mortality Type	Number
Management removal	4
Defense of life	3
Natural mortality	1
Unknown cause	1
Total mortalities	9

*Grizzly Bear Mortalities in GYE
portion of Idaho, 2024.*

Managing Human-Bear Conflicts

- Removing/securing attractants
- Outreach and education
- Hazing/trapping





Carcass Removal

- Large carcasses are readily available in form of road-kill and winter-kill ungulates
- In and around human use areas
- Threat to both human and bear safety
- Over 60 carcasses were removed



Apple Removal

- Over 2500 pounds of apples
- Henry's Fork Wildlife Alliance and Idaho Master Naturalists
- Apples donated to Grizzly and Wolf Discovery Center in West Yellowstone



Outreach and Education

- Public outreach events
- Education in campgrounds and neighborhoods
- Social media

Outreach and Education

- *Table 3. Idaho Department of Fish and Game grizzly bear education and outreach events in southeast Idaho, 2024.*



EVENT	INDIVIDUALS
FOREST SERVICE TRAINING	60
YOUTH OUTDOOR SKILLS DAY	209
YOUTH DAY-MUD LAKE	99
YOUTH DAY-SAINT ANTHONY	129
SALMON REGION TRAINING	36
USFS TRAINING-WARM RIVER CAMPGROUND	43
REGION 5-125 CELEBRATION	241
HENRYS LAKE CAMPFIRE CHAT	47
IDAHO BACKCOUNTRY HORSEMEN	6
BEAR AND WILDLIFE FESTIVAL	302
FLAT ROCK CLUB	10
BEAR SAFETY TRAINING	60
INL SAFETY DAYS	139
INL SAFETY DAYS	329
INL SAFETY DAYS	311
ISLAND PARK FESTIVAL/PIONEER DAY WEEKEND	426
ISLAND PARK FESTIVAL/PIONEER DAY WEEKEND	556
TEACHER WORKSHOP	25
REXBURG FARMERS MARKET	351
FREMONT COUNTY SEARCH AND RESCUE	29
IDAHO FALLS DUCK RACE	1261
FOREST SERVICE TRAINING	197
ISLAND PARK FESTIVAL-LABOR DAY WEEKEND	589
ISLAND PARK FESTIVAL-LABOR DAY WEEKEND	1504
NORDIC SKI PATROL	15
HFWA Talk	25
TOTAL	6999

Education

- Conduct site visits to identify potential conflict situations
- Focused on times of day and week to maximize encounters with public
- Canvas neighborhoods, developed campgrounds, and dispersed campsites



Rental Property Signs

- Rental properties continue to be source of unsecured attractants
- Signage provided to rental property owners

GUESTS, YOU ARE IN BEAR COUNTRY

Idaho is home to Grizzly and Black Bears

Please make ALL bear attractants inaccessible.
If it smells, it smells good to a bear.

- Store garbage indoors or in bear-resistant garbage cans.
- Do not leave food, grease, garbage, recycling, coolers, or pet food accessible to bears.
- When you leave, please store garbage or other attractants in a secure location or take it with you.
- Never intentionally feed bears. A fed bear is likely to be euthanized and may become a public safety threat.

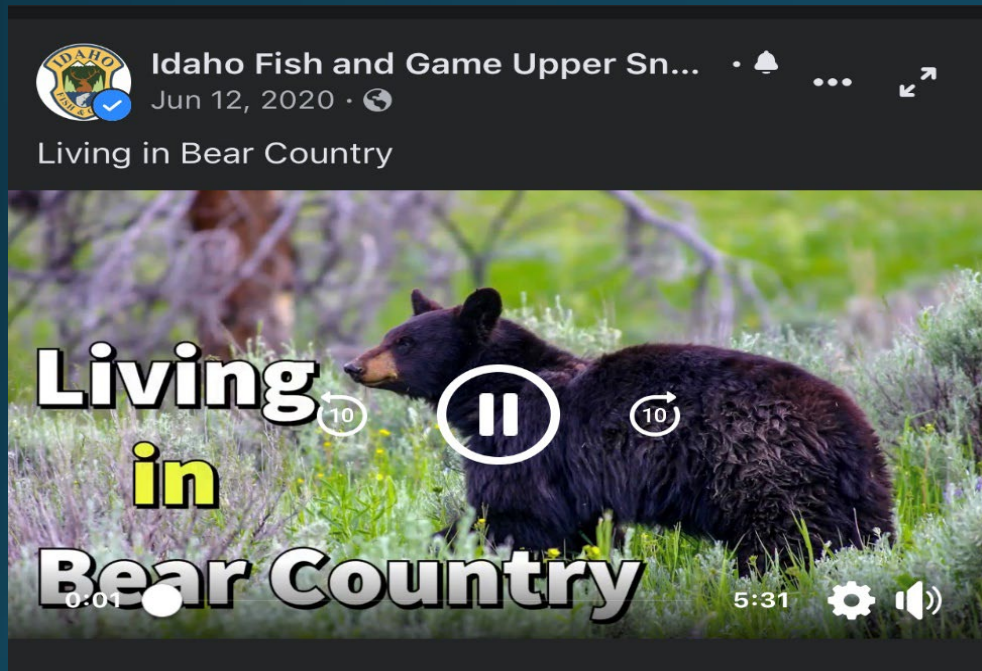
To report a bear sighting or learn more about living in bear country please contact:

Idaho Department of Fish and Game
208-528-7290

idfg.idaho.gov

Social Media



- Spring release-Living in bear country and recreating in bear country
- Bears and bear activity throughout summer



GRIZZLY BEAR CONFLICTS IN THE GYE PORTION OF IDAHO
2024

Cade Bowlin, Idaho Department of Fish and Game