

Conflict Data and Management Program



Cubs of bear #25 in Gardiner Dump, 1975

Management of Large
Carnivore Conflicts
Requires a Significant
Amount of Manpower
Thanks to Everyone !



Clint Atkinson
Mark Aughton
Mike Boyce
Luke Ellsbury
Ken Mills
Phil Quick
Scott Stingley

CONFLICT MANAGEMENT



- Grizzly Bear
- Black Bear
- Mountain Lion
- Wolf (TG area)



Human-Wildlife Conflicts

- Interactions between humans and wildlife that results in property damage, agriculture damage, or public safety issues (aggression, disease)
- Management of human-wildlife conflicts
 - Promotes tolerance and Department support
 - Human safety is paramount

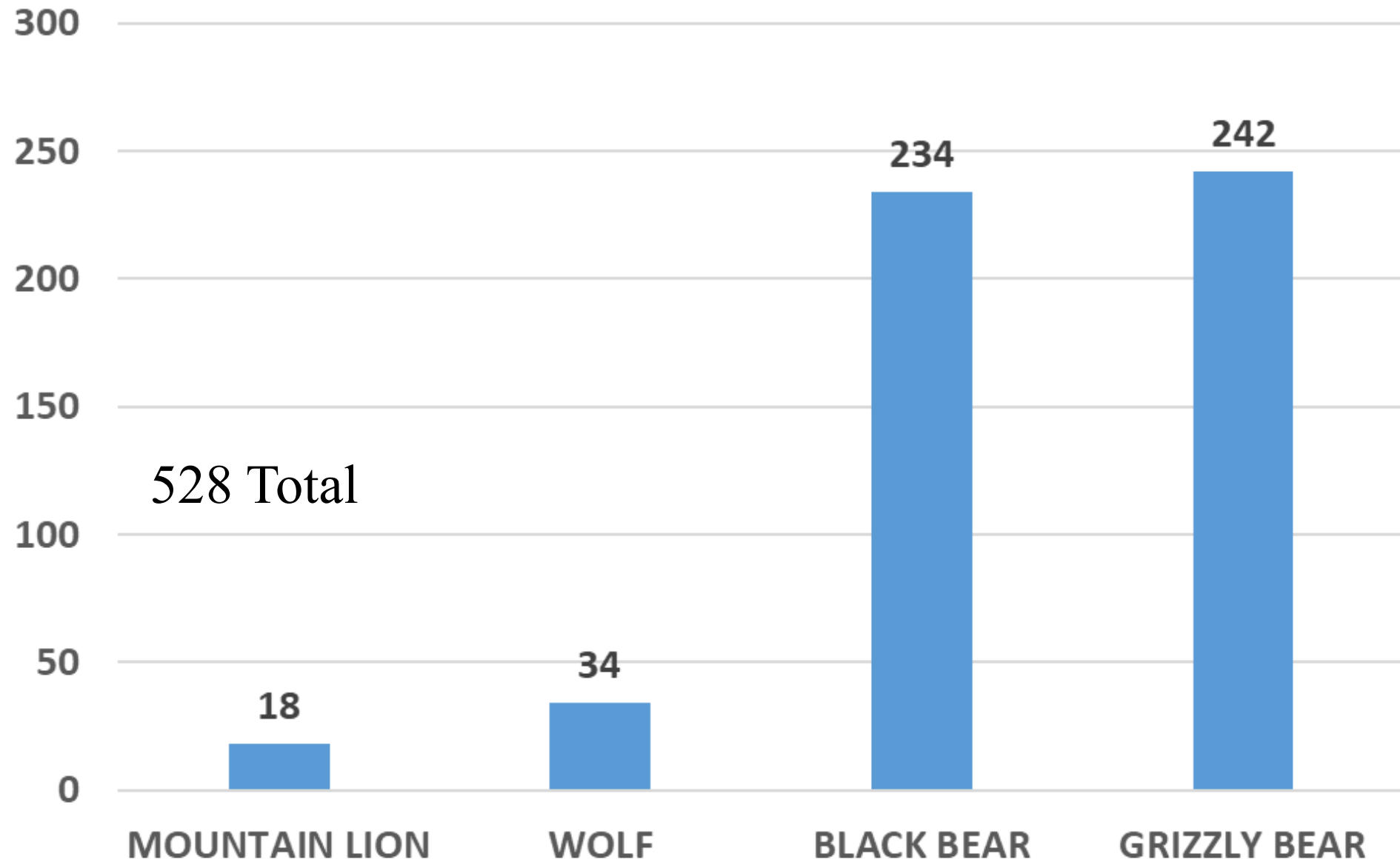
**Data includes the minimum of verified,
legitimate conflicts**

Sighting/Encounter

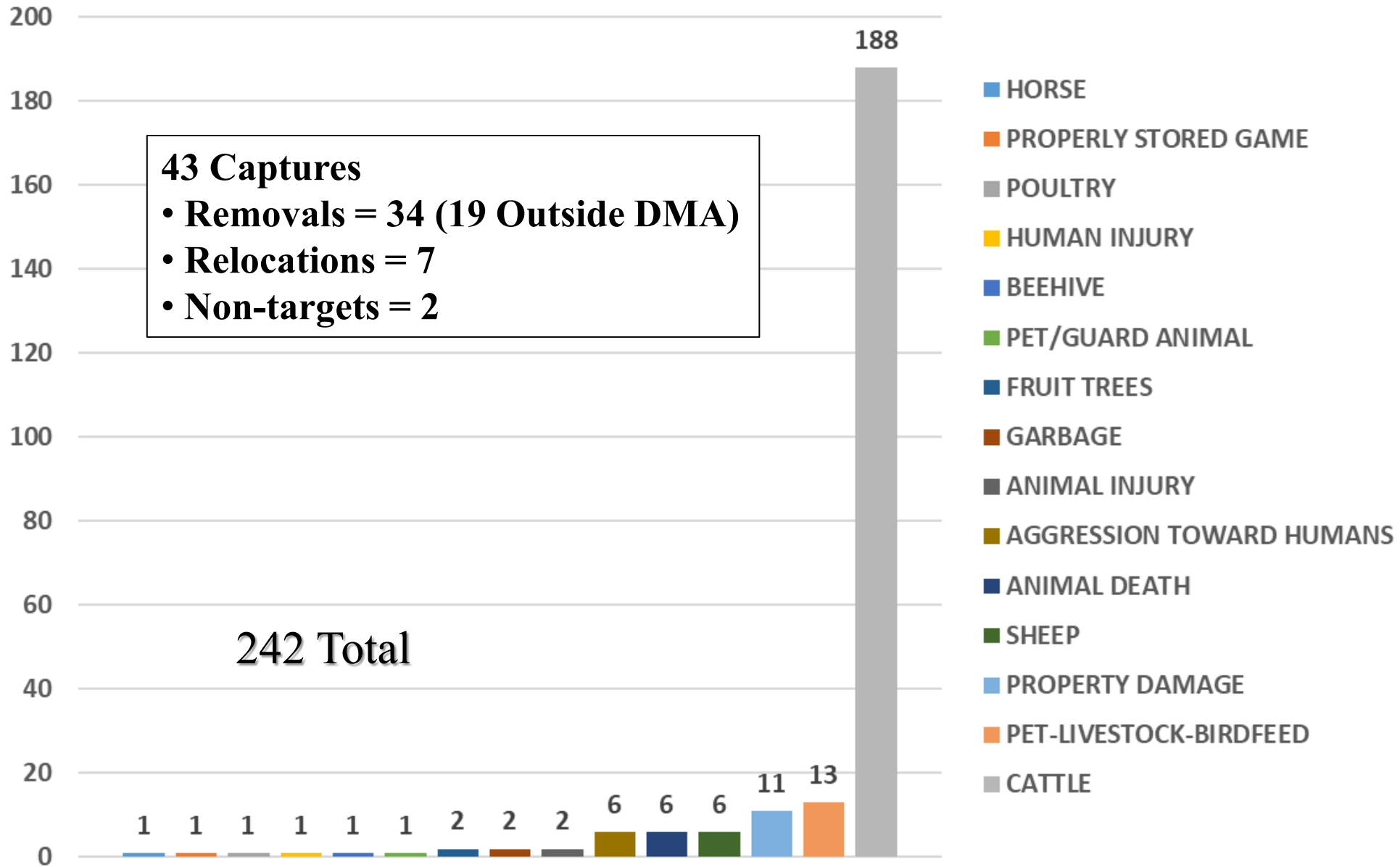


Conflict

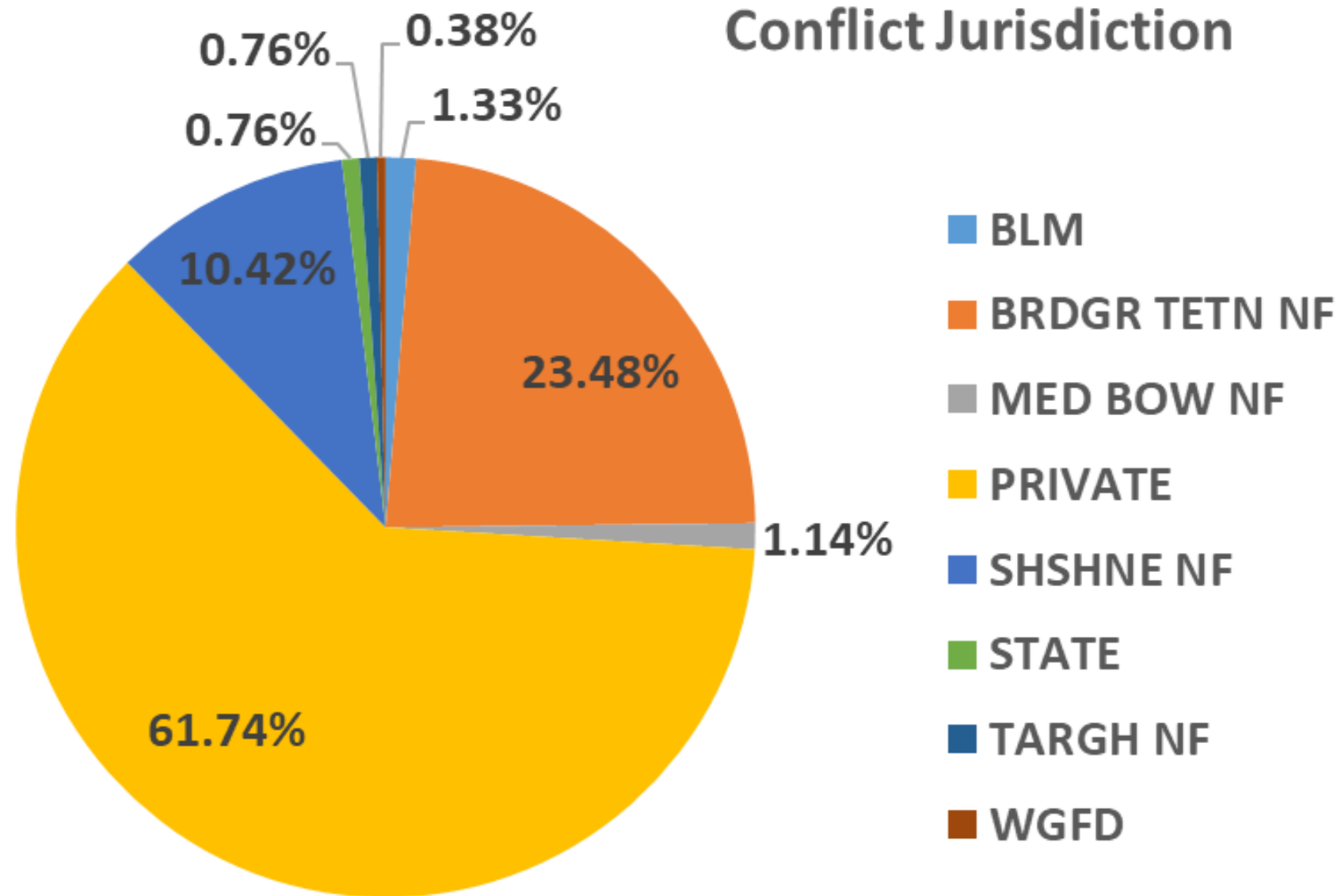
2024 WY Trophy Game Conflicts



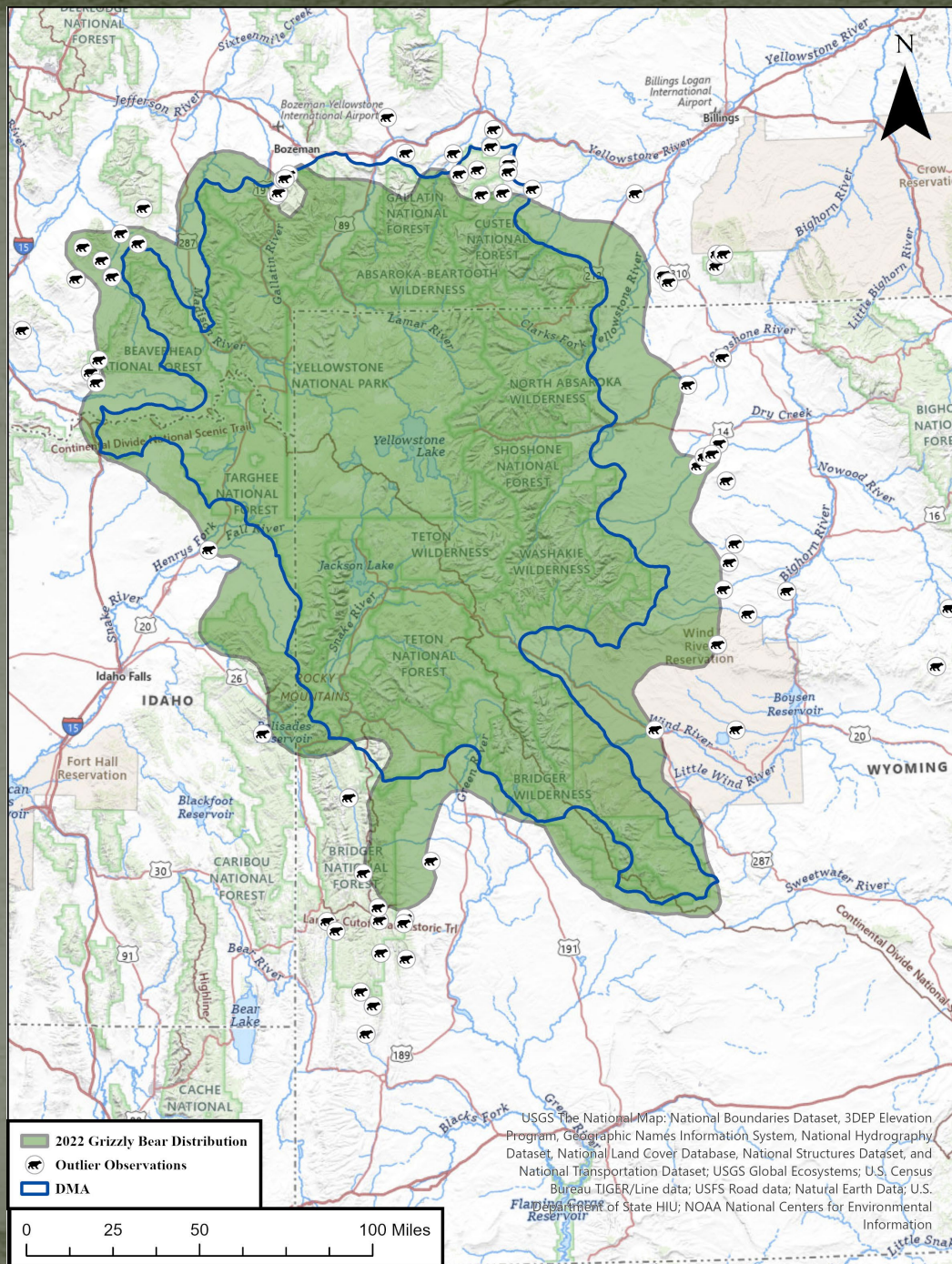
2024 WY Grizzly Bear Conflicts



Conflict Jurisdiction



Range Expansion Beyond Suitable Habitat



What Drives Annual Conflict Numbers?

Social Tolerance

Real and Perceived Threats



Abundance of Natural Foods



Population Demographics: Size, Distribution, Age and Sex Structure, Health of Individuals.....

Field Response Program



- **Conflict Management/Prevention**
Information and Education
Securing Attractants
- **Management of Individual Animals**
Aversive Conditioning
Deterrence and Securing Attractants
Relocation
Removal
- **Compensation Programs**

Focus on Prevention



Education



Securing Garbage





More Prevention

Damage Compensation Program (Livestock and Beehives)

Monetary compensation to
reimburse livestock owners

- Payment made at market value
- Payment for killed, injured and missing livestock; guard dogs
(Verified Damage Only)





Every
carcass is
examined



More Likely Than Not

When Other Options are Exhausted

- We attempt capture if the situation warrants
- We relocate if applicable
- Some animals have to be removed from the population



Predator Attack Team (PAT)

- Trained personnel
- Team approach



Predator Attack Team (PAT)

- One human injury in WY, no deaths
- Six self-defense shooting investigations

(All grizzly bear)





Sheridan Region, Spring 2024

- Regional Training
- CEW'S
- New Wardens
- Local Law Enforcement

Social Media



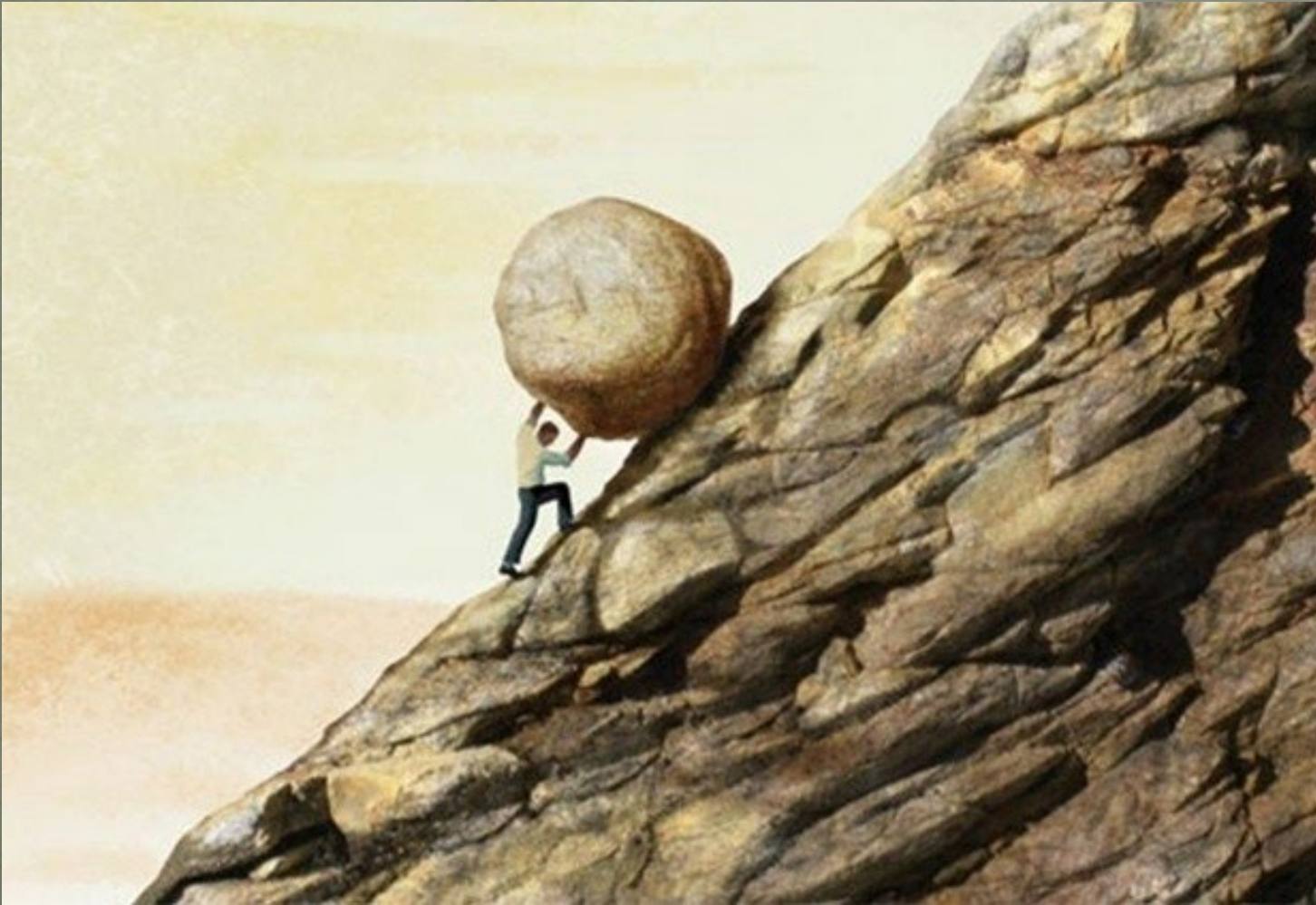
- False perceptions of state management
- Humans are loving animals to death quite literally
- Constantly addressing misinformation by so-called “experts”

Conflict Summary

- Number of annual trophy game conflicts are relatively steady because of vigilant personnel
- Increasing numbers of large carnivores and interest in them creates new management challenges in a dynamic social and political arena.



Large carnivore employees are dedicated, very efficient, and hard working



Supervisors, Wardens,
and Biologists