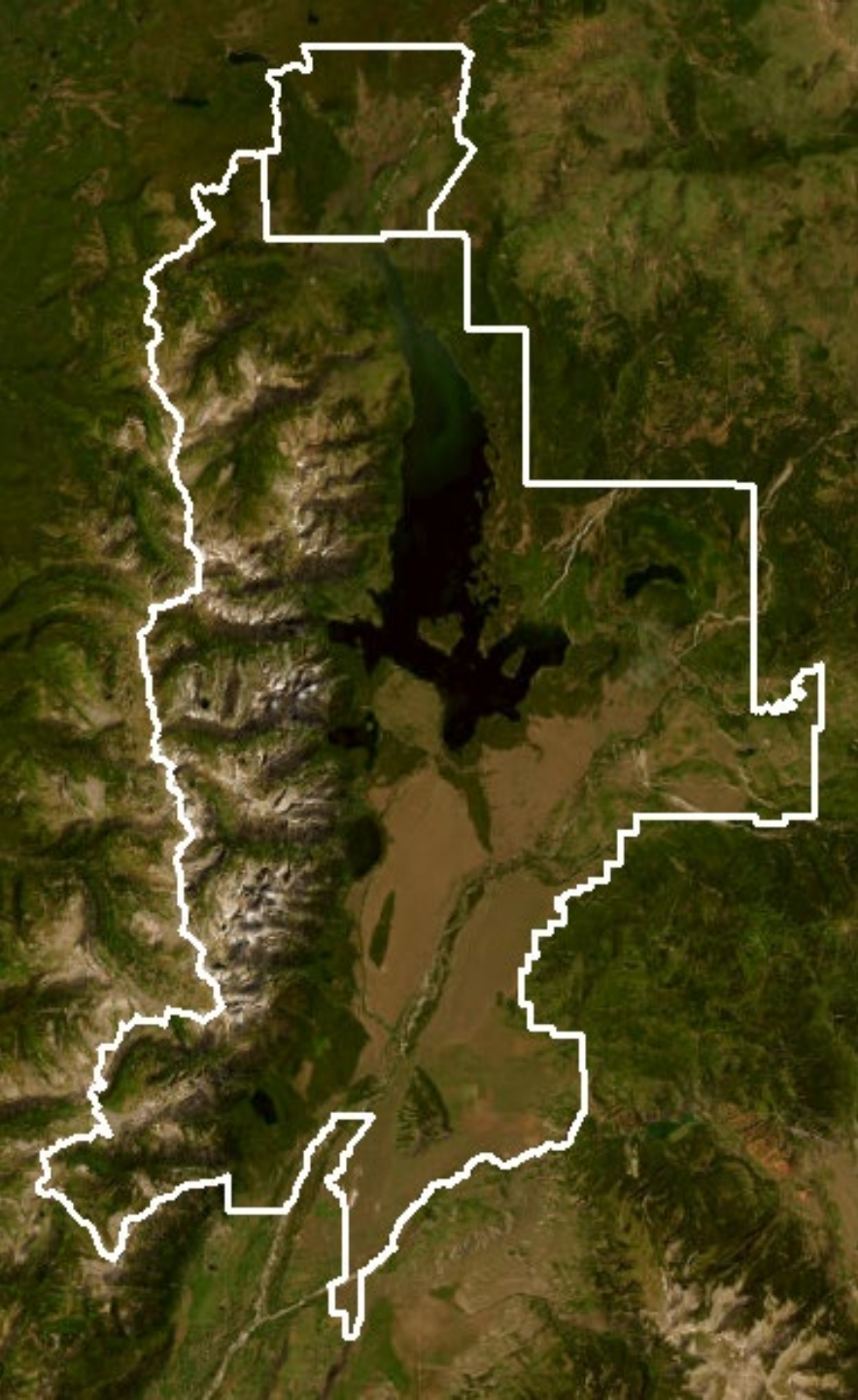




# Grand Teton National Park & John D. Rockefeller, Jr. Memorial Parkway

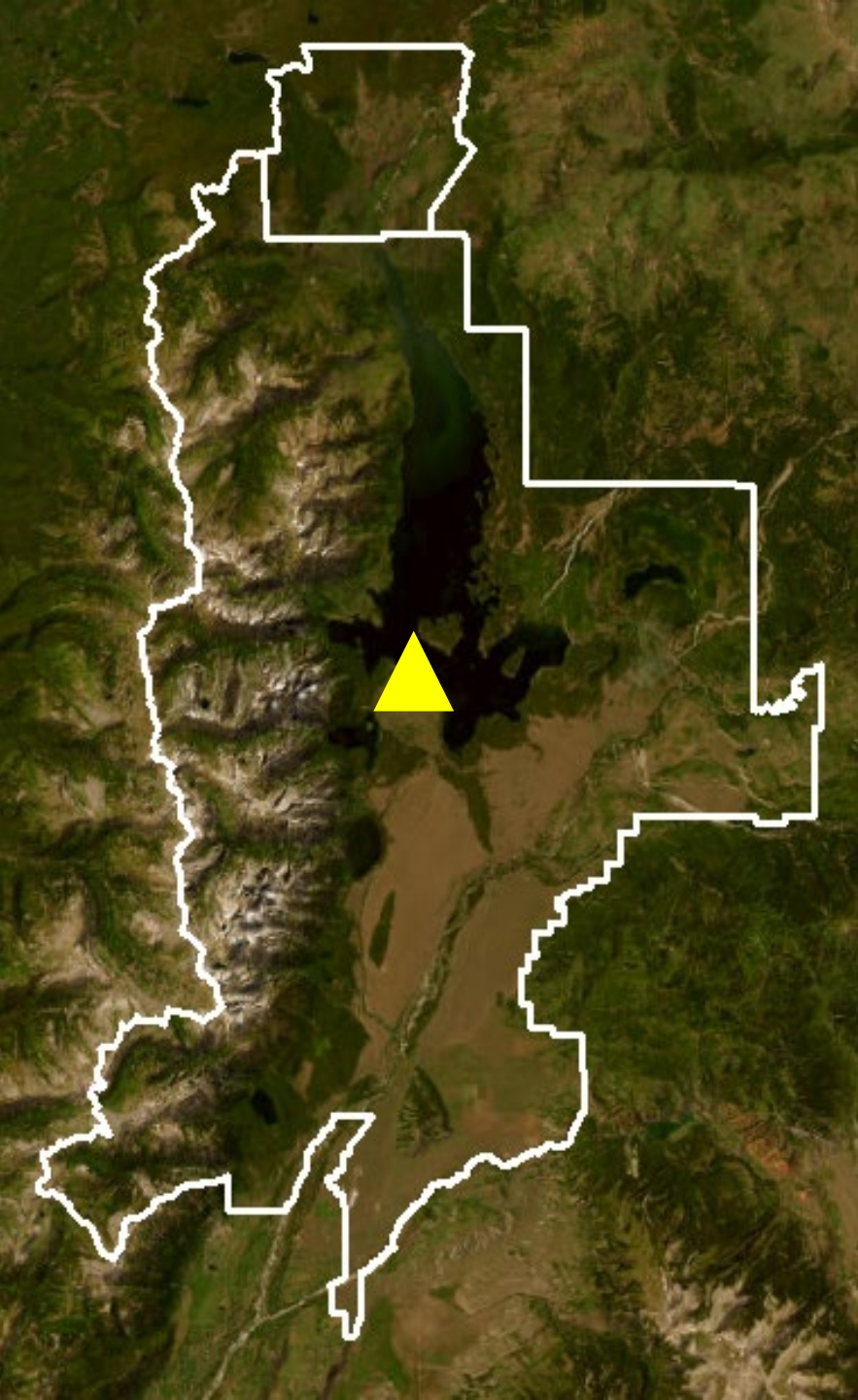


## 2024 Conflict Report



# 2

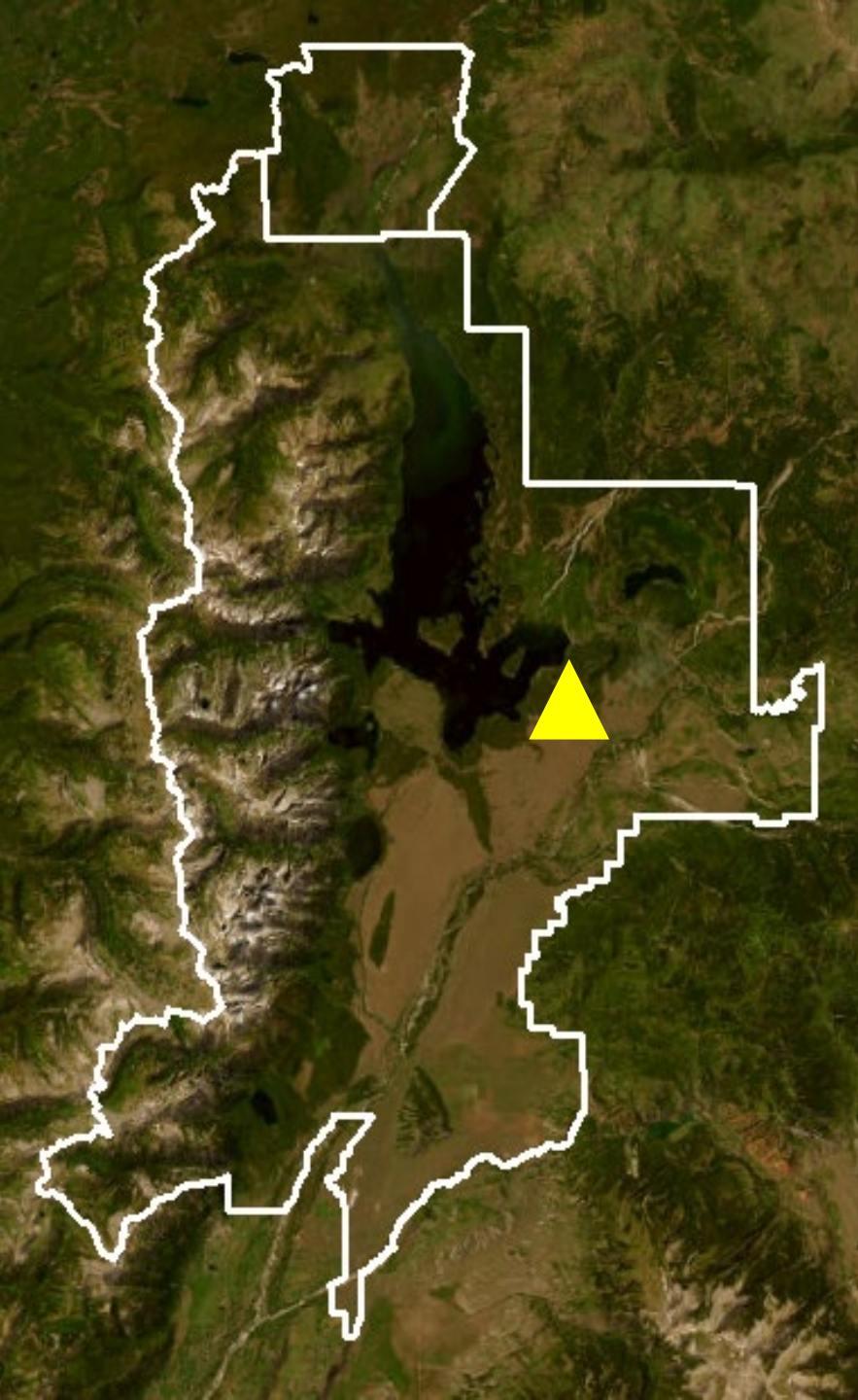
Human-grizzly bear conflicts



**2**

Human-grizzly bear conflicts

**1** property damage



**2**

Human-grizzly bear conflicts

**1** property damage

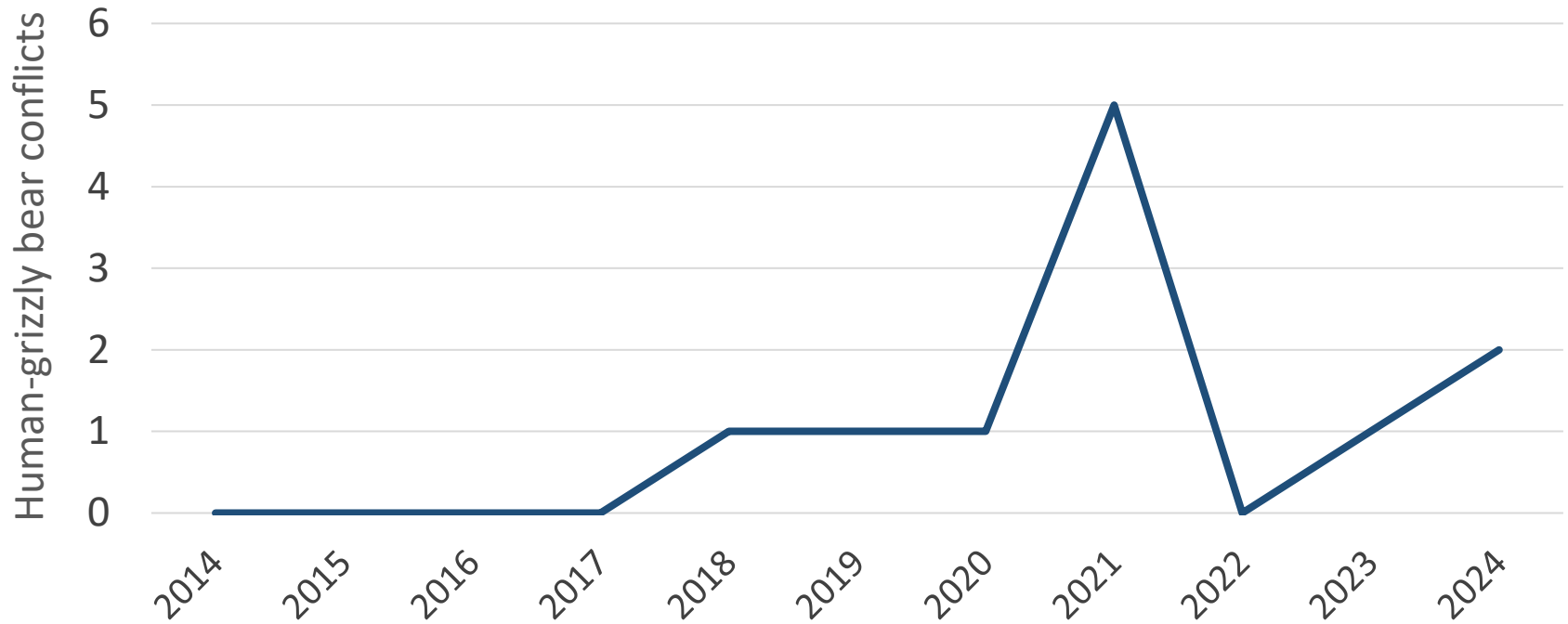
**1** human injury

# Signal Mountain Mauling | May 19, 2024

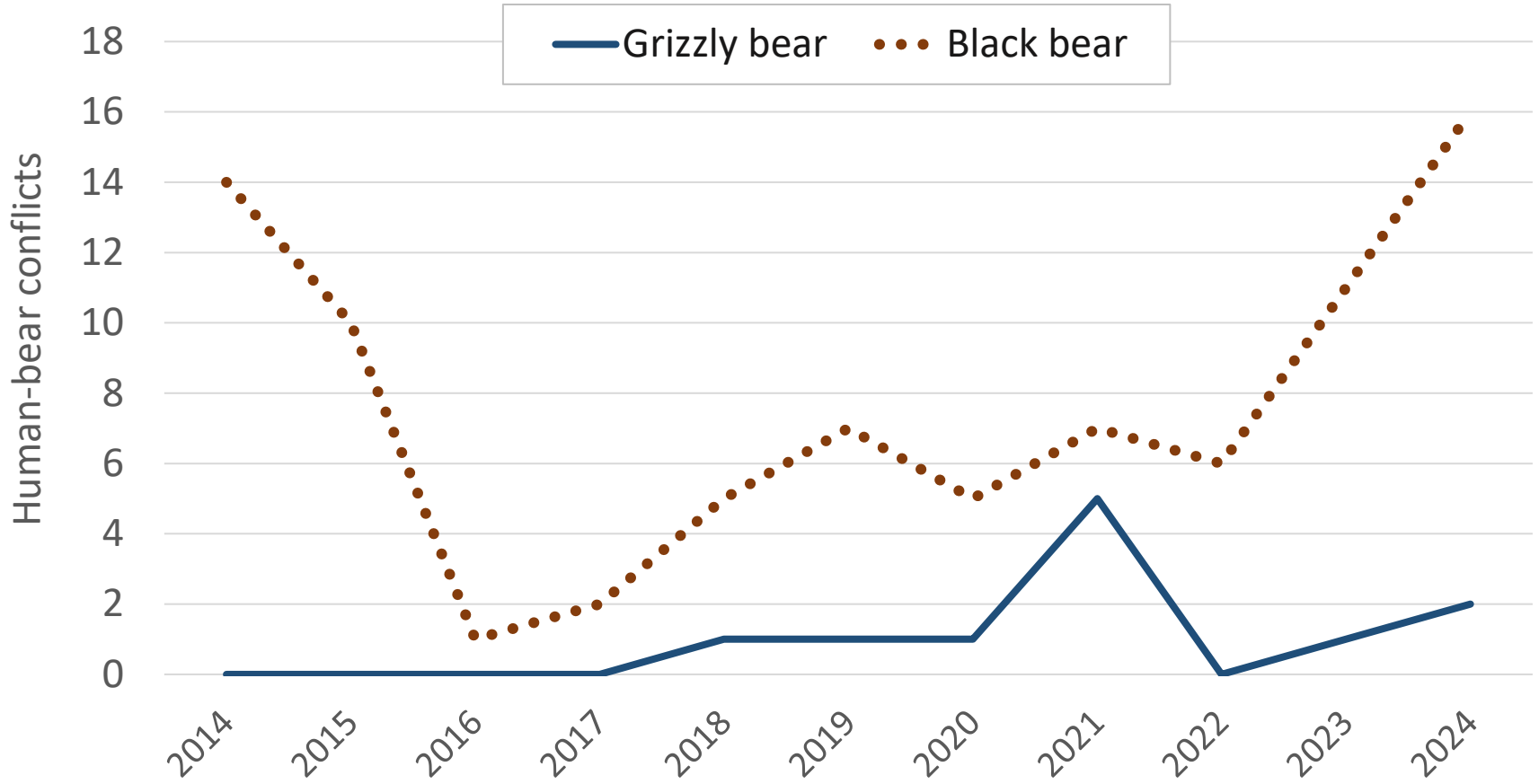
- Visitor hiking off-trail in the backcountry
- Carrying bear spray and making noise
- Surprised at least two grizzly bears
- Larger bear charged and made contact before bear spray could be deployed
- Played dead while holding the undeployed bear spray canister behind neck
- Ended when the bear bit the bear spray canister



# Human-grizzly bear conflicts (2014-2024)



# Human-bear conflicts (2014-2024)



# Conflict mitigation efforts (2024)

Temporary area closures	11
Trailhead bear safety signs	38
Ungulate carcass removals	56
Unsecured attractant warnings	>1,250
Bear education & outreach events	12
Bear safety & hazing trainings with staff	29
Bear-resistant trash/recycling infrastructure	100%





# Bear box installation

In partnership with the  
Grand Teton National Park Foundation:



**1,093** modern bear boxes installed since 2008

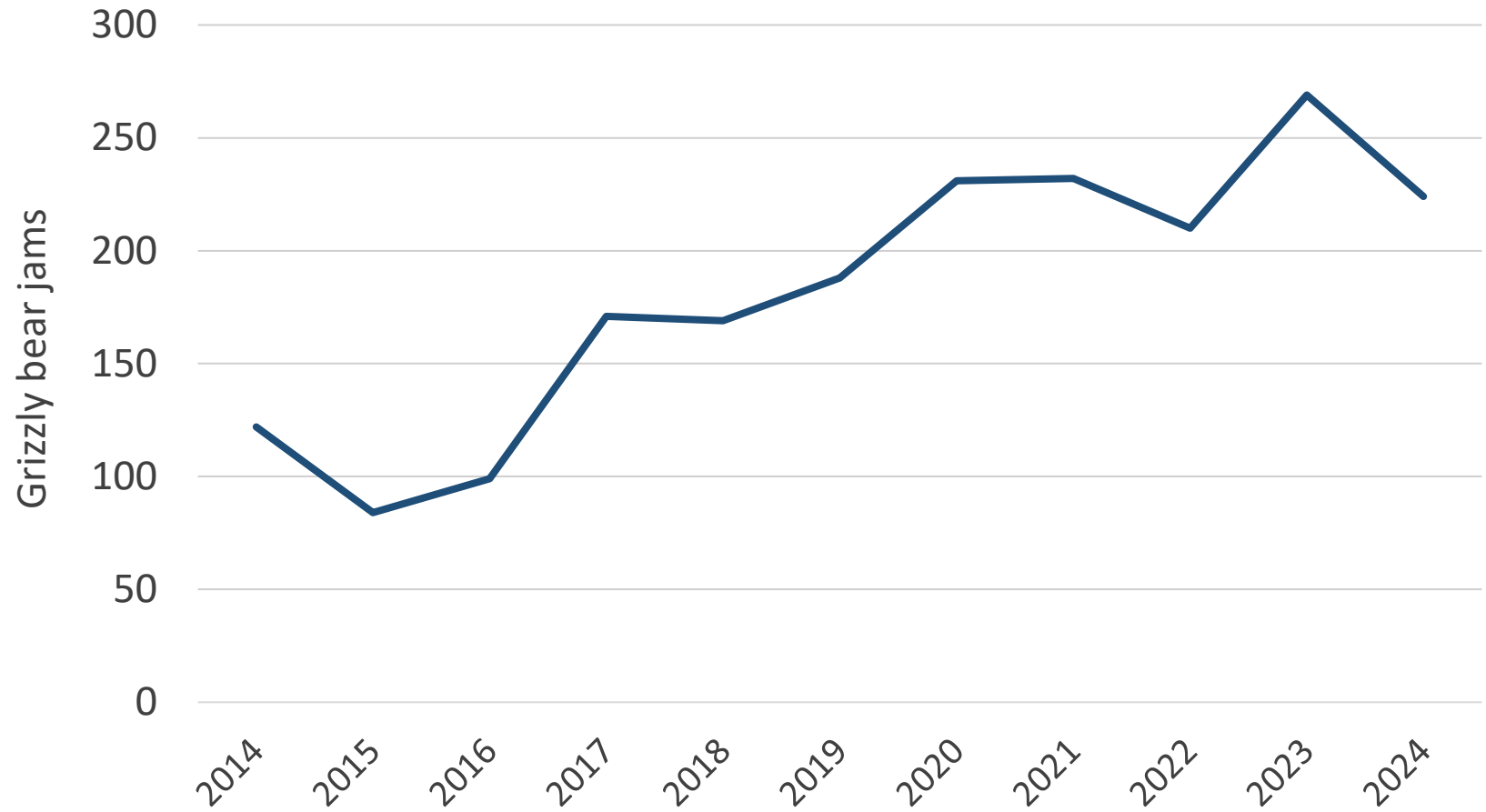


# Bear jam management

Minimum of **224** grizzly bear jams,  
which represented 44% of all bear jams in 2024



# Grizzly bear jams (2014-2024)



# Wildlife Brigade

2 wildlife management rangers

2 wildlife interns

32 volunteers contributing **12,000+** hours



# Bear education trailer

Dedicated staffing on **30 days** to provide bear safety education and bear spray demonstrations





[bearwisejh.org](http://bearwisejh.org)



VISITORS ▾

COMMUNITY RESOURCES ▾

ABOUT BEARS ▾

EVENTS

ABOUT US

CONTACT & FAQs

Stay Safe in  
Bear Country

[VIEW BEAR CONFLICT MAP](#)

JACKSON HOLE IS  
**BEAR COUNTRY**  
Help us keep BEARS WILD  
and PEOPLE SAFE

- NEVER feed wildlife
- Store all garbage in bear-resistant containers
- Always remain 100 yards from bears
- Report bear conflicts to Wyoming Game and Fish Department at:

307-733-2331



# Questions?

## 2024 Wildlife Staff Acknowledgments:

G. Angelo, B. Apel, L. Apel, T. Brasington, C. Butler, M. Clark, R. Clark, R. Coscarelli, S. Dewey, L. Dreger, C. Faustman, C. Faustman, G. Gonsiewski, N. Gonsiewski, C. Hayden, T. Hayden, C. Hutson, L. Kirby, T. Kirby, A. Langford, T. Lapuk, J. Lieb, S. Liske, R. Mascia, T. Mascia, S. Morriss, S. Morriss, L. Muir, J. Potter, C. Price, A. Ryan, S. Ryan, J. Schwabedissen, J. Stephenson, B. Swift, P. Waite, A. Willemain, C. Willemain, J. Willemain, K. Wilmot, A. Zuckerman

