

Selkirk and Cabinet-Yaak Grizzly Bear Monitoring

Wayne Kasworm, Thomas Radandt, Justin Teisberg, USFWS

Michael Proctor, Birchdale Ecological

- 2025 monitoring
- 2024 Management capture monitoring
- 2024 Selkirk and Cabinet-Yaak Field Recovery targets females with young and mortality
- 2023 genetics preliminary results
- Bog Creek monitoring
- Other projects
- 2025 plans



2025 Telemetry Monitoring

- Collared bears began emerging from dens in late March or early April
- Monitoring 16 collared bears
- Selkirks 2 Females and 3 Males
- Cabinet-Yaak 4 Females and 7 Males
- A couple bears may have dropped collars at or near dens that will be investigated



2024 Management Capture in Washington

- Bear 1068 was captured by WDFW in mid September due to an injury issue
- Anesthetization and examination identified a wound on the bear's left front paw which was examined and treated by WDFW veterinarian. Bear released in northeast WA inside the recovery zone
- Bear eventually moved into BC and then north Idaho where it got unsecured chickens and feed
- Electric fencing installed by IDFG
- Bear moved north into BC and denned
- Bear emerged in April and is currently in lower Slate Creek, Washington



2024 Management Captures in Montana

- Bear 1190 was in a family group captured and relocated in a two management actions southeast of Kalispell, MT in 2022 and 2023
- Bear 1190 (2-year-old male) was collared by MFWP in late July in the Salish Mountains
- He moved west to the east side of the CYE and identified at several conflict sites often involving chickens or unsecured feed. He was captured and euthanized in September 2024
- Bear 979 (4-year-old male) was captured in the upper Yaak River in late October 2024 after getting unsecured chickens and feed.
- He was released in northwest MT.
- MFWP installed several electric fences in the area of capture
- He denned in BC and emerged in April. He was most recently located NF Yahk, BC

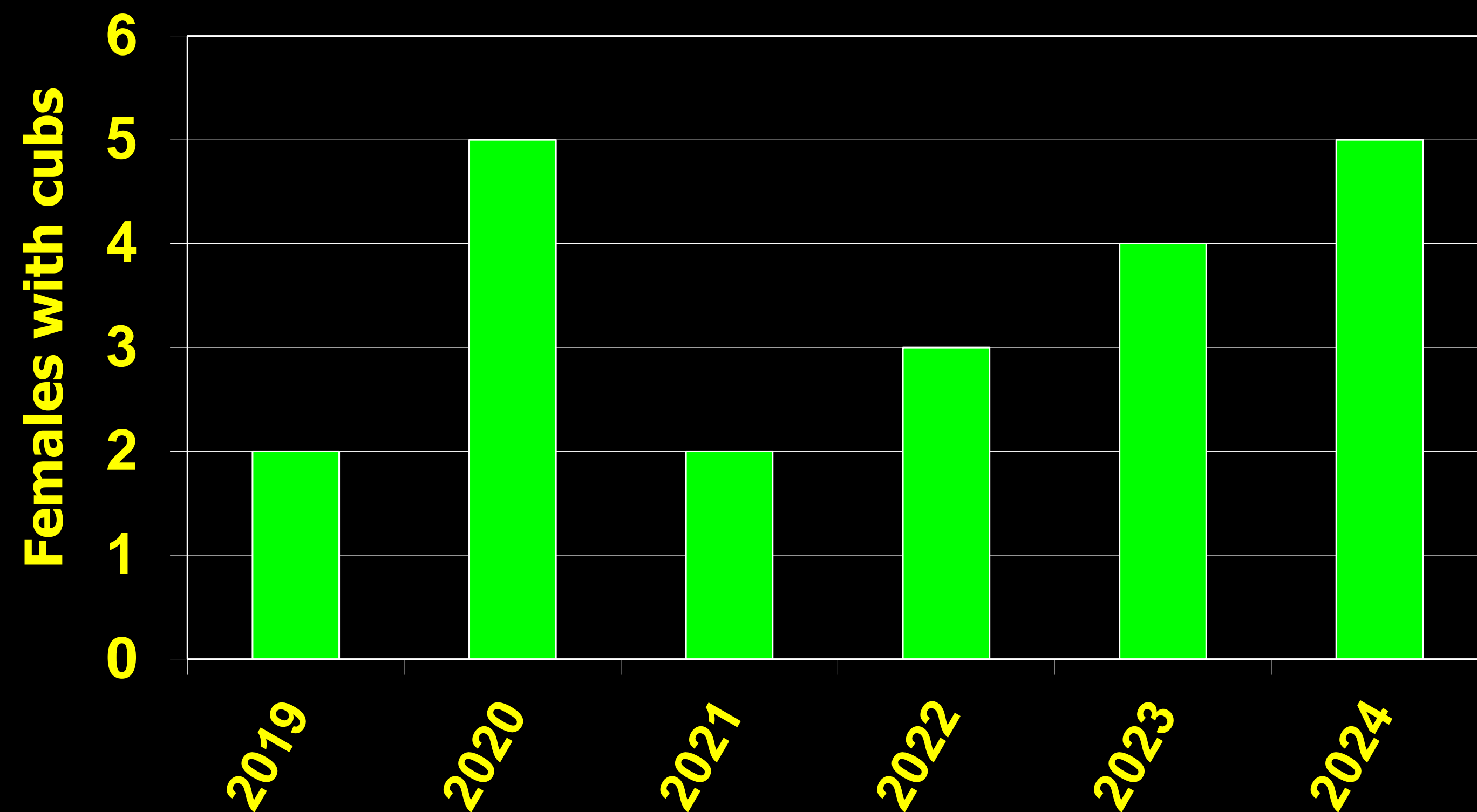


Recovery plan demographic targets

- Average 6 females with cubs (FWC) for last 6 years
- Females with young occupy 18 of 22 CY BMUs or 7 of 10 US Selkirk BMUs or in last 6 years
- 4% Mortality limit based on last 3 years FWC and a minimum population estimate (female sublimit 30% of total)
- Demographic targets based on populations with gene flow (not isolated)
- There is no recovery plan target for a specific population size
- Based on the female with cub target the expected population about 90-100 bears

2024 Cabinet-Yaak Females with cubs of the year (COY)

- Five unduplicated females with COY
- 3.5 females with cubs as 6-year average Recovery Goal = 6.0
- 16 of 22 BMUs occupied (Goal 18 of 22)





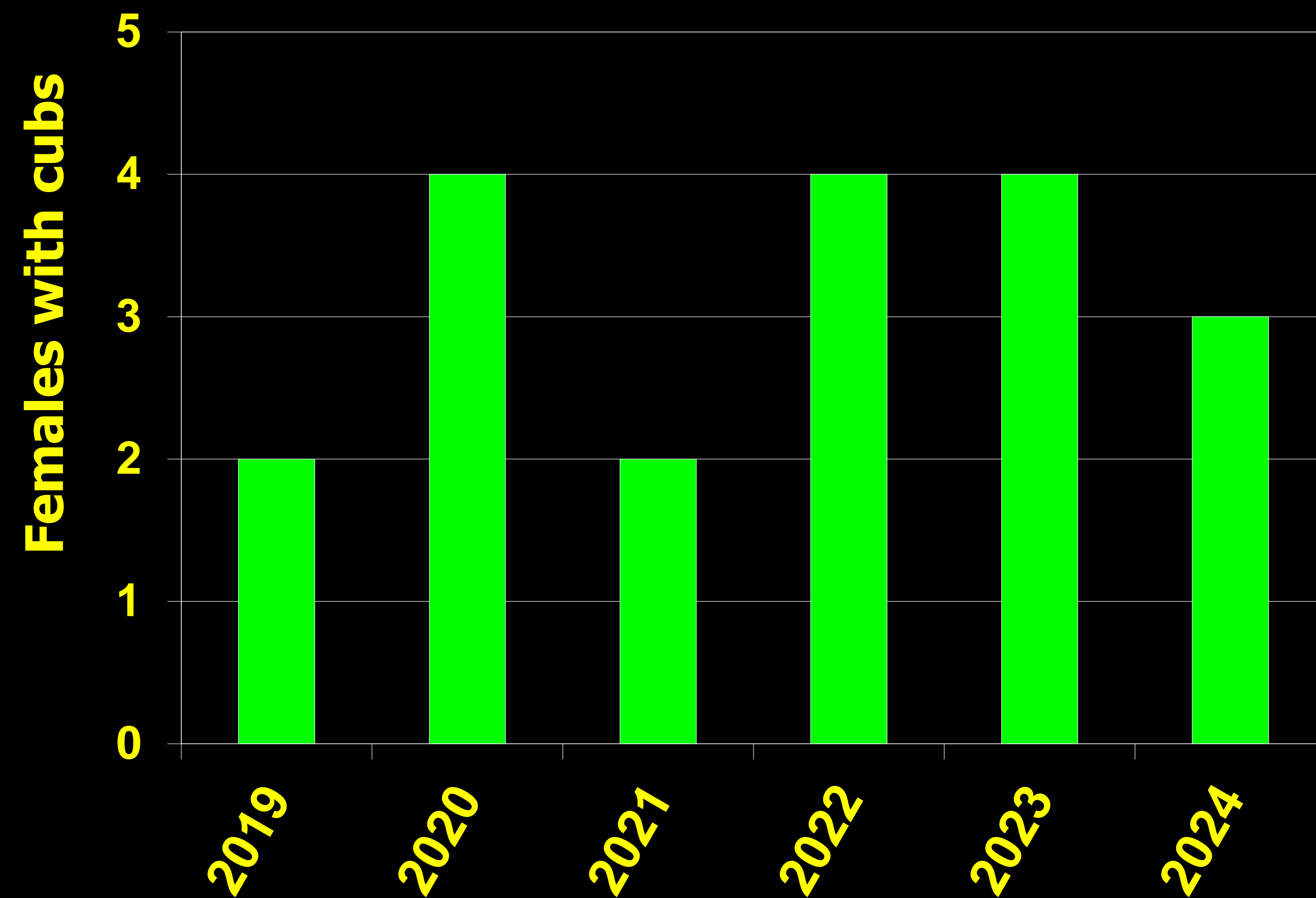
Cabinet-Yaak Human Caused Grizzly Bear Mortality

- 2019-24 = 13 (7F:6M) Human Caused (2.2 per year)
4.2% total mortality (Recovery Goal $\leq 4\%$)
- 2019-24 = 7 Female Mortalities (1.2 per year)
2.3% Female mortality (Recovery Goal $\leq 1.2\%$)
- Annual growth rate from radio collared bears = 1.7%
(72% probability stable to increasing)



2024 Selkirk Females with cubs of the year (COY)

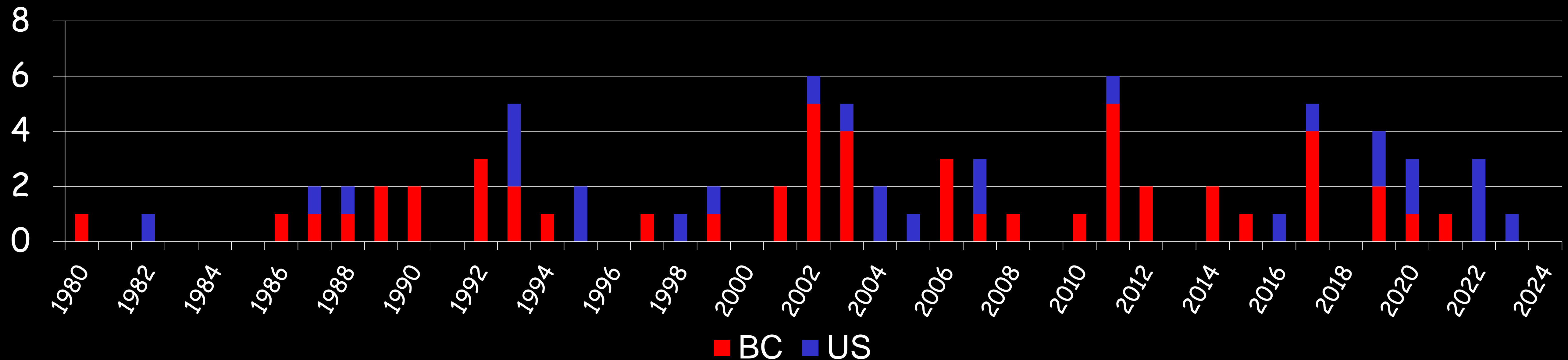
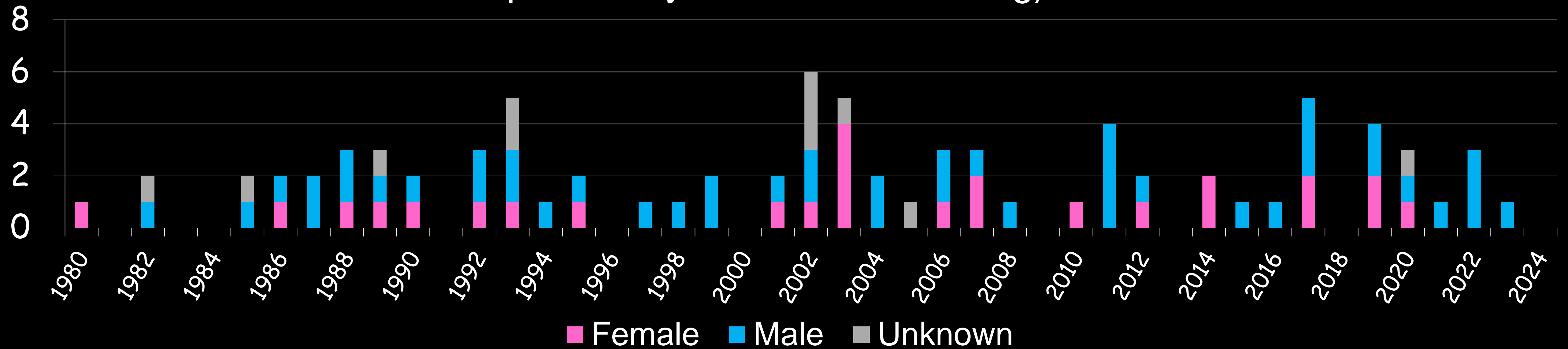
- Three unduplicated females with COY
- 3.2 females with cubs as 6-year average Recovery Goal = 6.0
- 9 of 10 BMUs occupied (Goal 7 of 10)





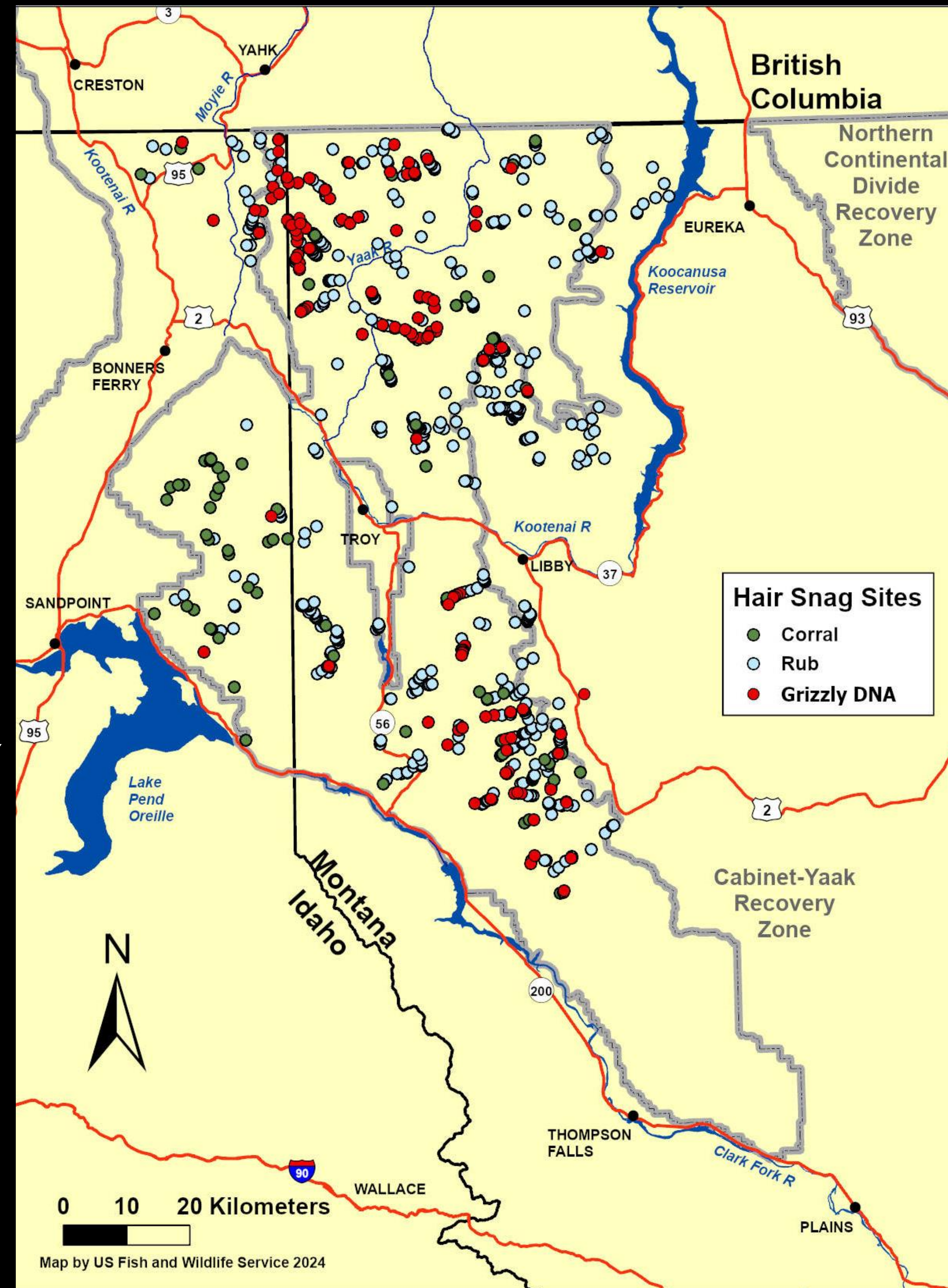
Selkirk Human Caused Grizzly Bear Mortality

- 2019-24 = 12 (8M:3F:1U) Human Caused (2.0 per year)
4.0% total mortality (Recovery Goal $\leq 4\%$)
- 2018-23 = 3 Female Mortalities (0.5 per year)
1.0% Female mortality (Recovery Goal $\leq 1.2\%$)
- Annual growth rate from radio collared bears = 2.9% (82% probability stable to increasing)



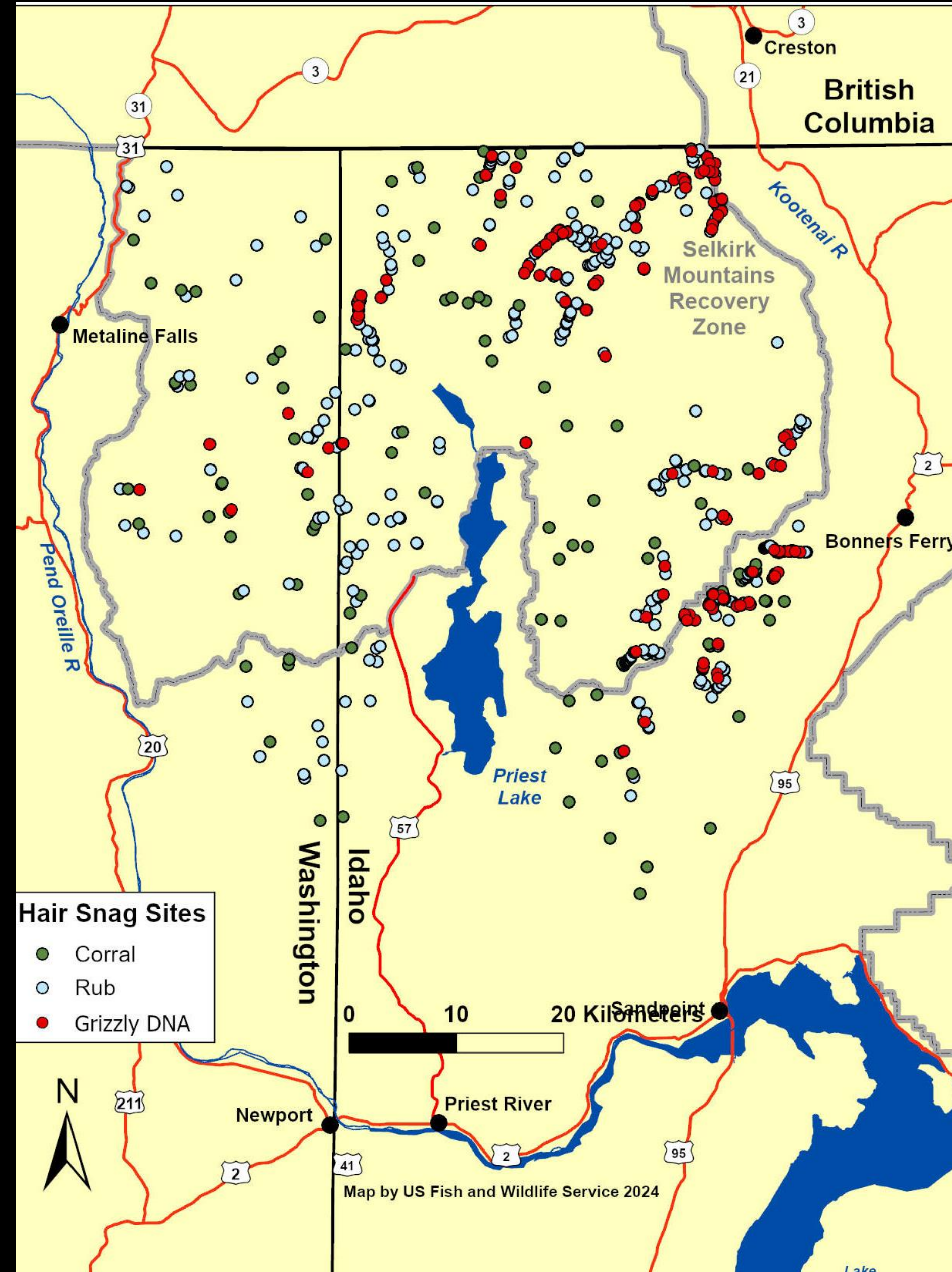
2023 Cabinet-Yaak Hair Snagging for Genetic Monitoring

- 814 Rub sites visited 3-4 times
- 171 Corrals sampled
- Opportunistic samples
- 42 individuals identified via genetics
- 16 additional from photos, collars
- 58 total individuals
- 17 ADF, 18 ADM, 4 SAF, 7 SAM, 9 DY
- 27 in Cabinets (9 F, 12 M, 6 Unk)
- 32 in Yaak (13F, 18 M, 1 Unk)
- 1 male detected in Cabinets and Yaak



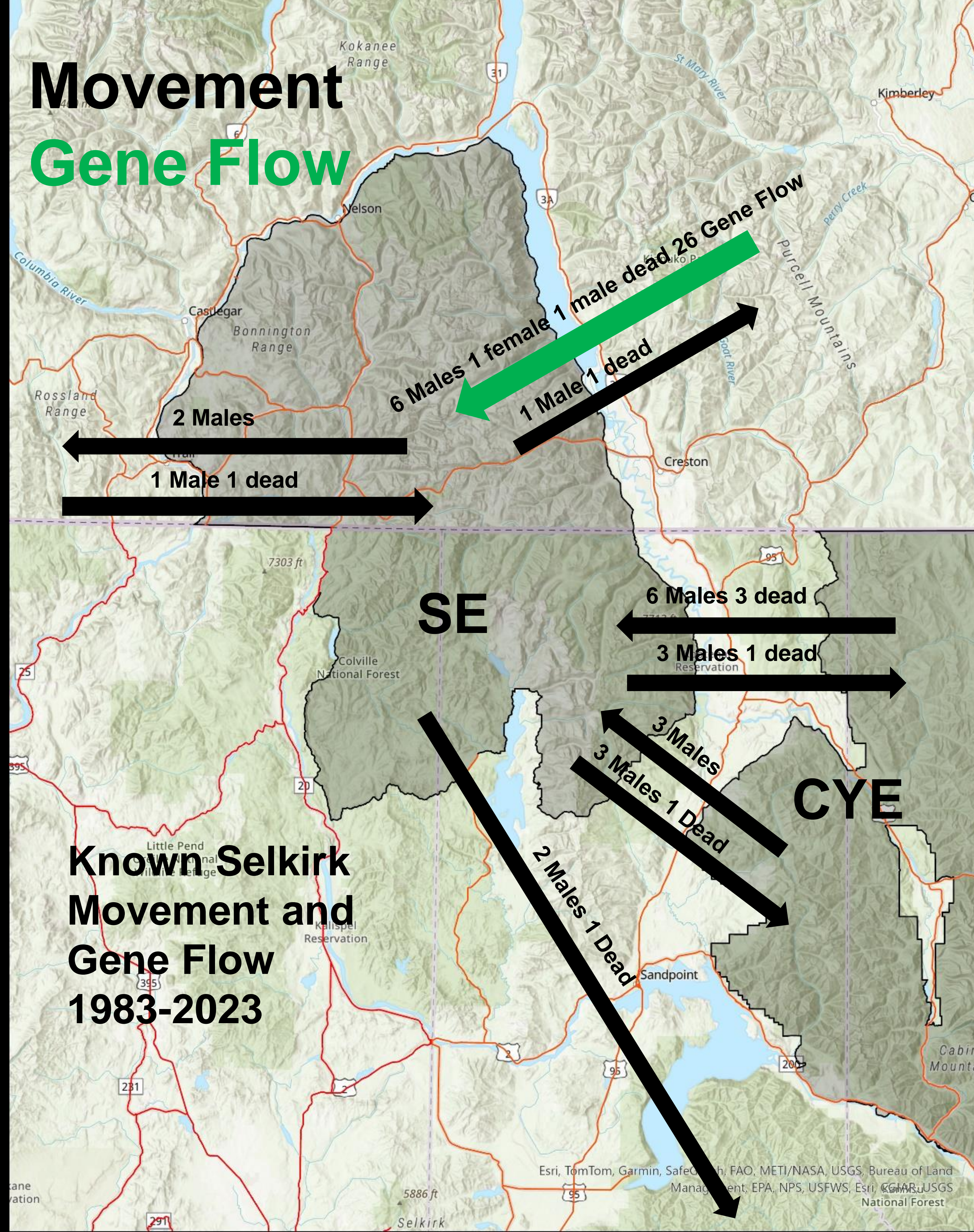
2023 Selkirk Hair Snagging for Genetic Monitoring

- 491 Rub sites visited 3-4 times
- 132 Corrals sampled
- Opportunistic samples
- 32 individuals identified via genetics
- 25 additional via photos or collars
- 57 total bears
- 12 ADF, 15 ADM, 6 SAF, 4 SAM, 20 DY



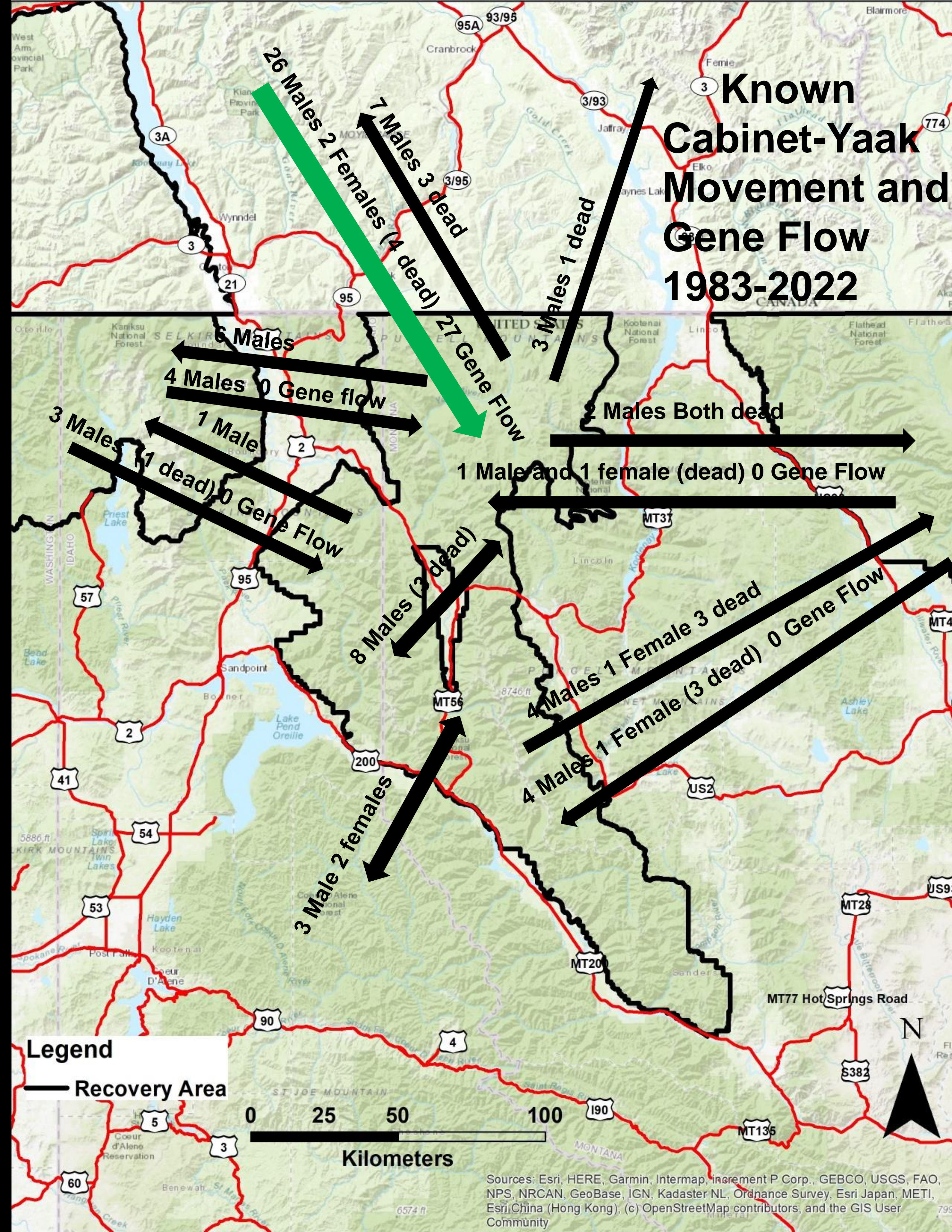
Selkirk Movement and Gene Flow with 2023 Genetics

Only known gene
flow from Purcell
Mountains north
of Highway 3 into
the Selkirks
(Green Arrow)



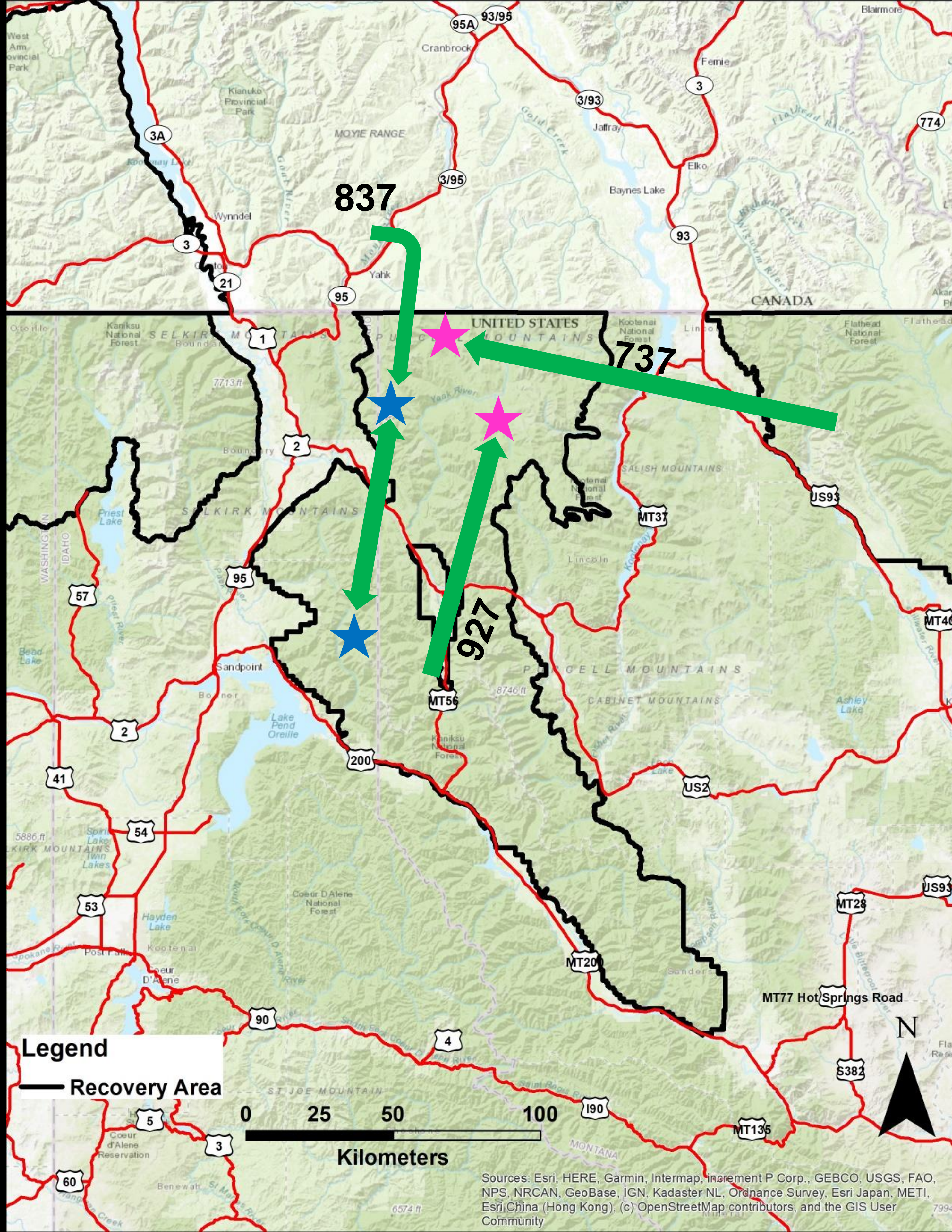
Previous Knowledge of Movement and Gene Flow

Only known gene flow from Purcell Mountains north of Highway 3 into the Yaak (Green Arrow)



2023 Genetics Results

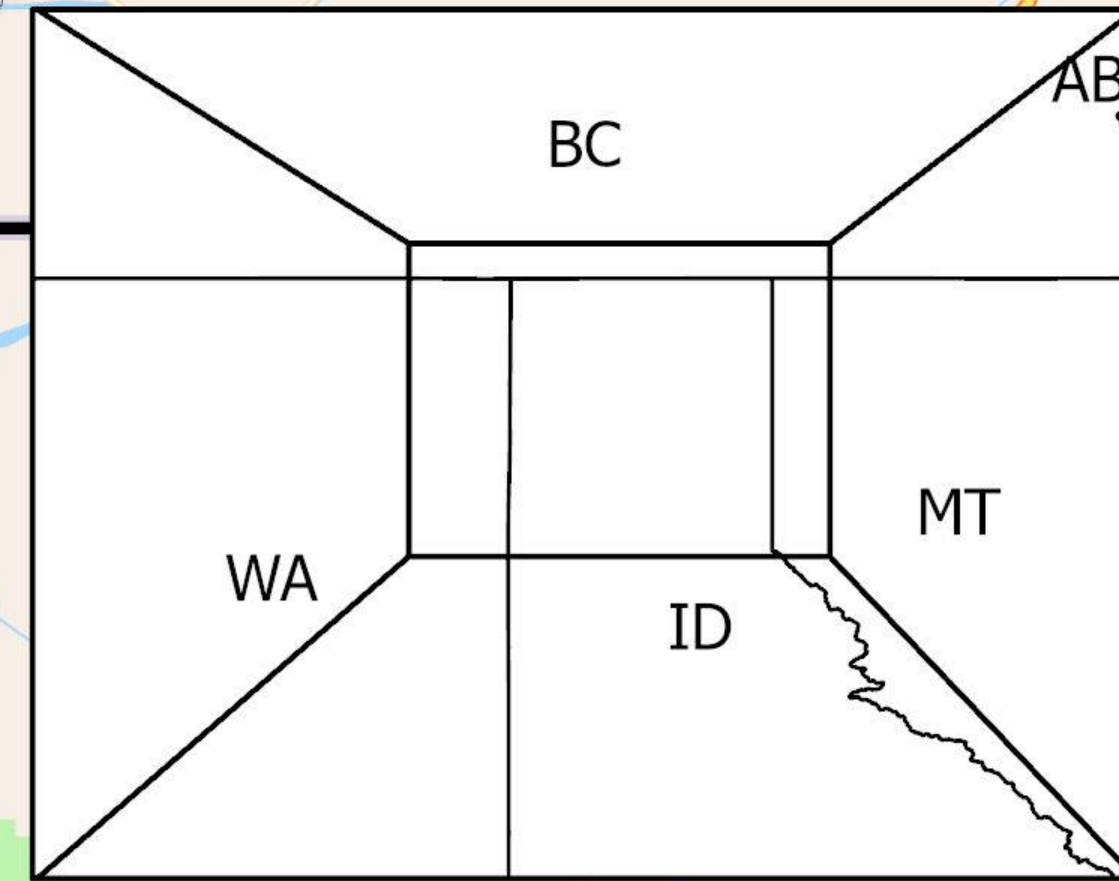
- Bear 837 was born in the Purcell Mountains north of Highway 3 in 2008. Captured in 2014 in the Yaak and wore a radio collar until 2016. His home range was north of the Kootenai River during that time. Detected via DNA in the Yaak in 2017-23, and 2019-20 and 2022 in the Cabinets. Produced a male offspring★ in the Cabinets in either 2020 or 2021 and a male offspring★ in the Yaak in 2022.



- Bear 737 moved from NCDE to Yaak before 2010. Captured as a 4-year-old and radio collared 2010-13. Produced a female offspring in approx 2016.★ 737 detected via DNA every year since 2012, but no other offspring detected thus far.



- Augmentation Bear 927 was released in the Cabinets in 2018 as a 2-year-old. Went to the Bitterroot and returned. Denuded two years in the Cabinets. Lost collar in 2020. Bred with bear 731 in Yaak and produced a male offspring in 2023. ★ 927 Not detected via DNA 2021-23.

Bog Creek Monitoring



**Border Patrol rebuilt
5.5 miles of closed
road in Bog Creek to
allow access to the
Priest Lake Basin from
Boundary Creek**

Legend

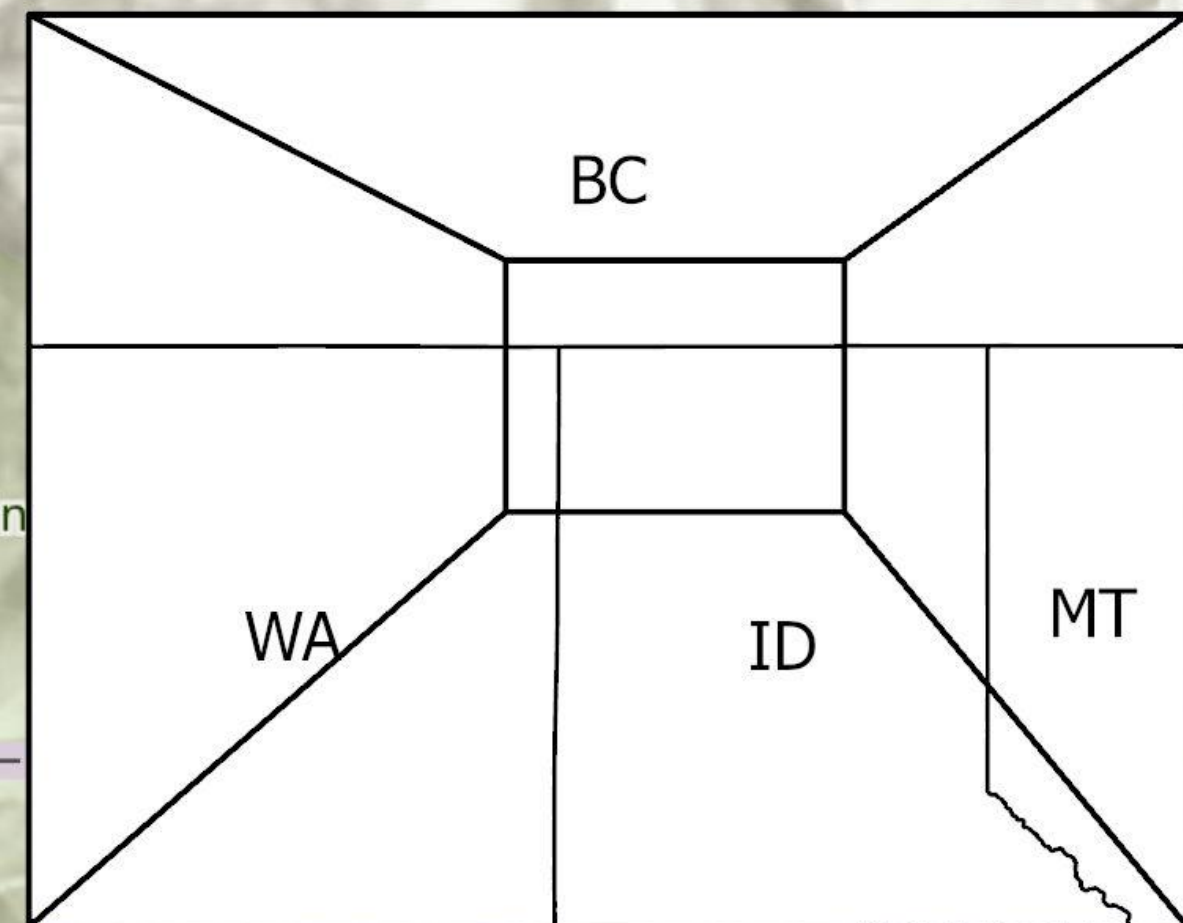
-  Bog Creek Study Area
-  State Lines

0 34 68 Kilometers



Coeur d'Alene National Forest

Sources: Esri, TomTom, Garmin, Safegraph, FAO, NOAA, USGS, (c) OpenStreetMap contributors, and the GIS User Community



2024 Monitoring Trail camera sites

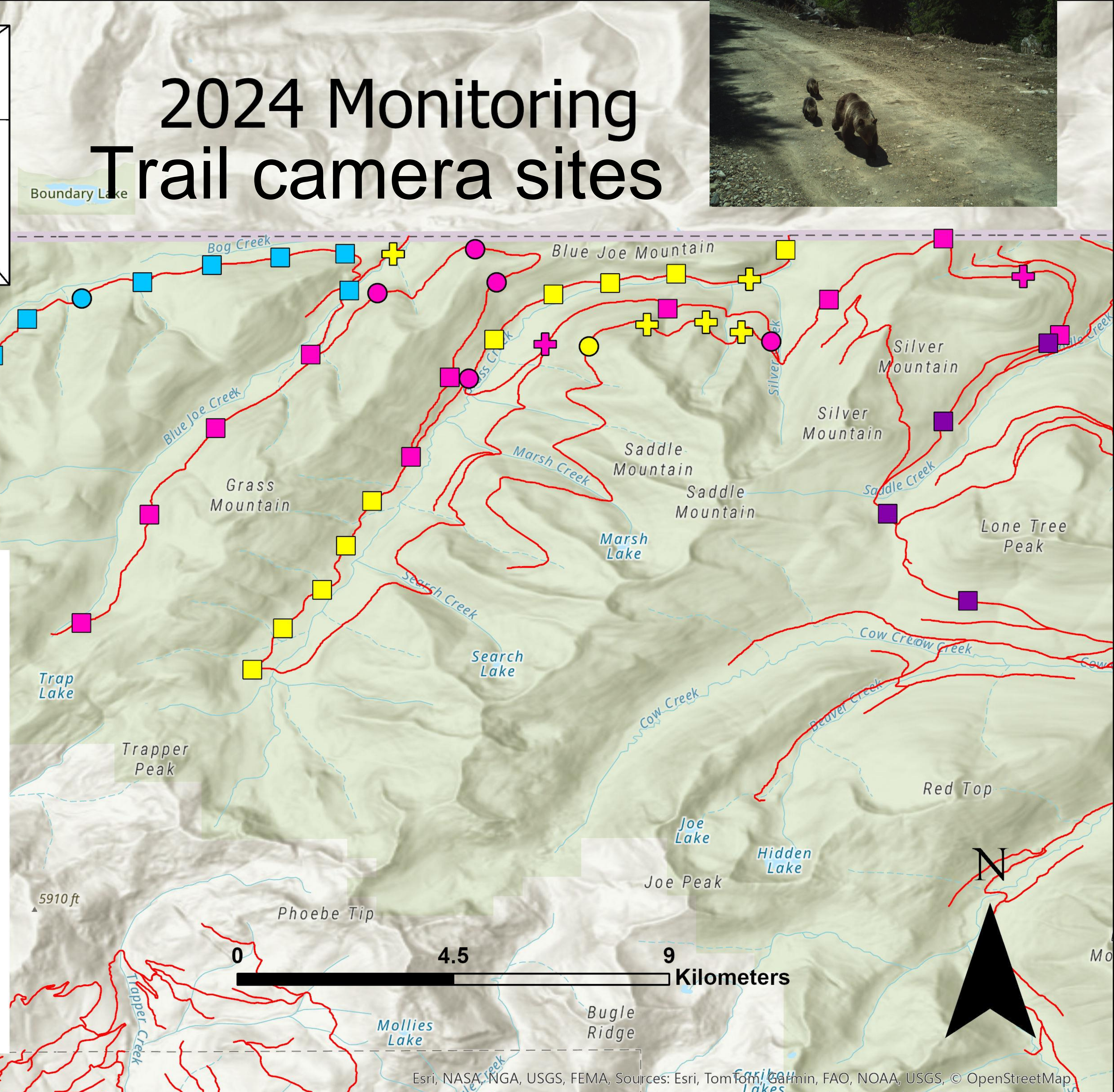


Legend

Road Segment, Grizzly Event, Grizzly Bear FWY

- Bog, No, No
- Bog, Yes, No
- Gated Admin, No, No
- Gated Admin, Yes, No
- ✚ Gated Admin, Yes, Yes
- Gated CM, Admin, No, No
- Gated CM, Admin, Yes, No
- ✚ Gated CM, Admin, Yes, Yes
- Open, Yes, No

— IPNF Roads



Other Projects

- Huckleberry mapping and production paper presented at IBA this past September and was submitted to a peer reviewed journal in 2025
- Bear Genetics U. Of Idaho Graduate Student Megan Turnock published first paper to a peer reviewed journal in 2024
- Habitat mapping U. Of Idaho Graduate Student Nate Rice starting year 2
- Selkirk Transboundary population estimate with Michael Proctor. Contractor has started work, with expected peer reviewed results in 2026



2014-10-18 6:12:01 PM M 3/3 49°F



Funding for 2025?

- Previous years funding provided by USFS, Border Patrol, and FWS during 2025 with in kind efforts by IDFG, Kalispel Tribe, KTOI, USFS, and WDFW.
- Less funding has been received thus far from USFS and FWS during 2025 in addition to the retirement of one of our primary field staff
- With less funding we are looking at reducing the trap and hair snag effort primarily in the Selkirks. This is based on the biological status of the two populations. Recent higher rates of female mortality in the CY which has reduced the population trend though it is still positive.

Thank you. Questions???

2018-10-13 8:54:37 AM

M 3/5

0 27°F

