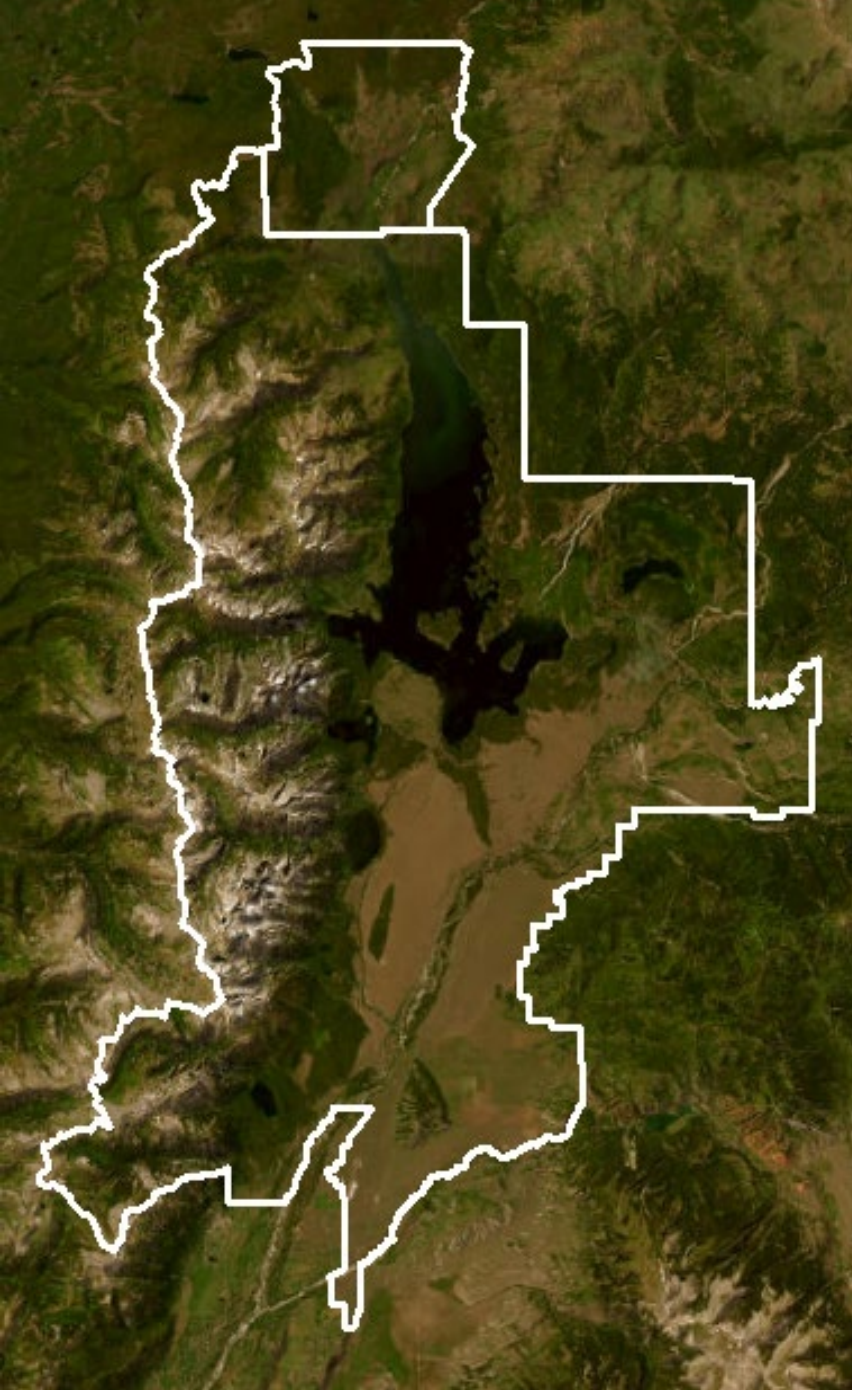




Grand Teton National Park & John D. Rockefeller, Jr. Memorial Parkway

2025 Conflict Report





0

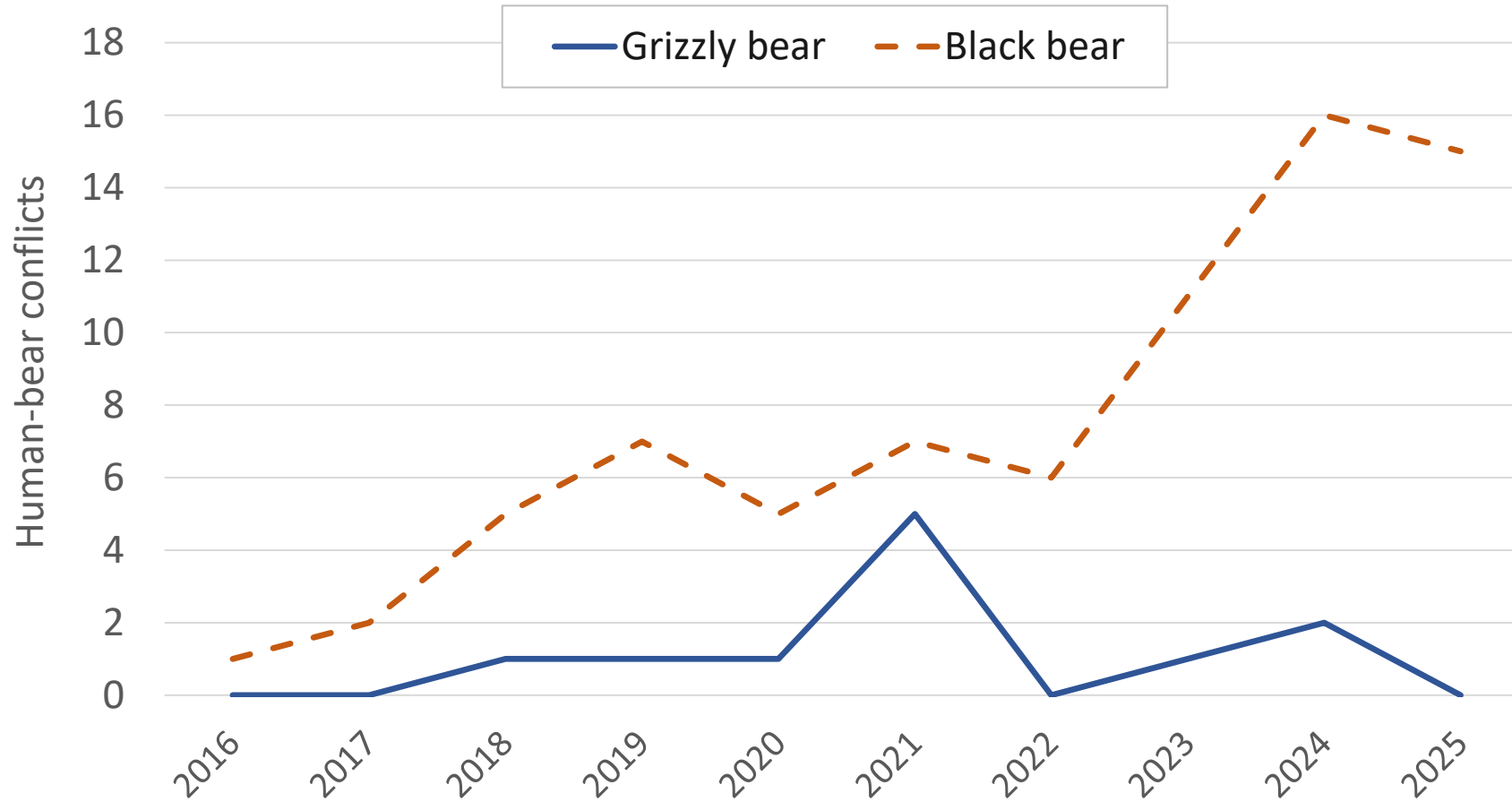
Human-grizzly bear conflicts



Human-grizzly bear conflicts (2016-2025)



Human-bear conflicts (2016-2025)





0

Human-grizzly bear conflicts

1

Grizzly bear relocation





0

Human-grizzly bear conflicts

1

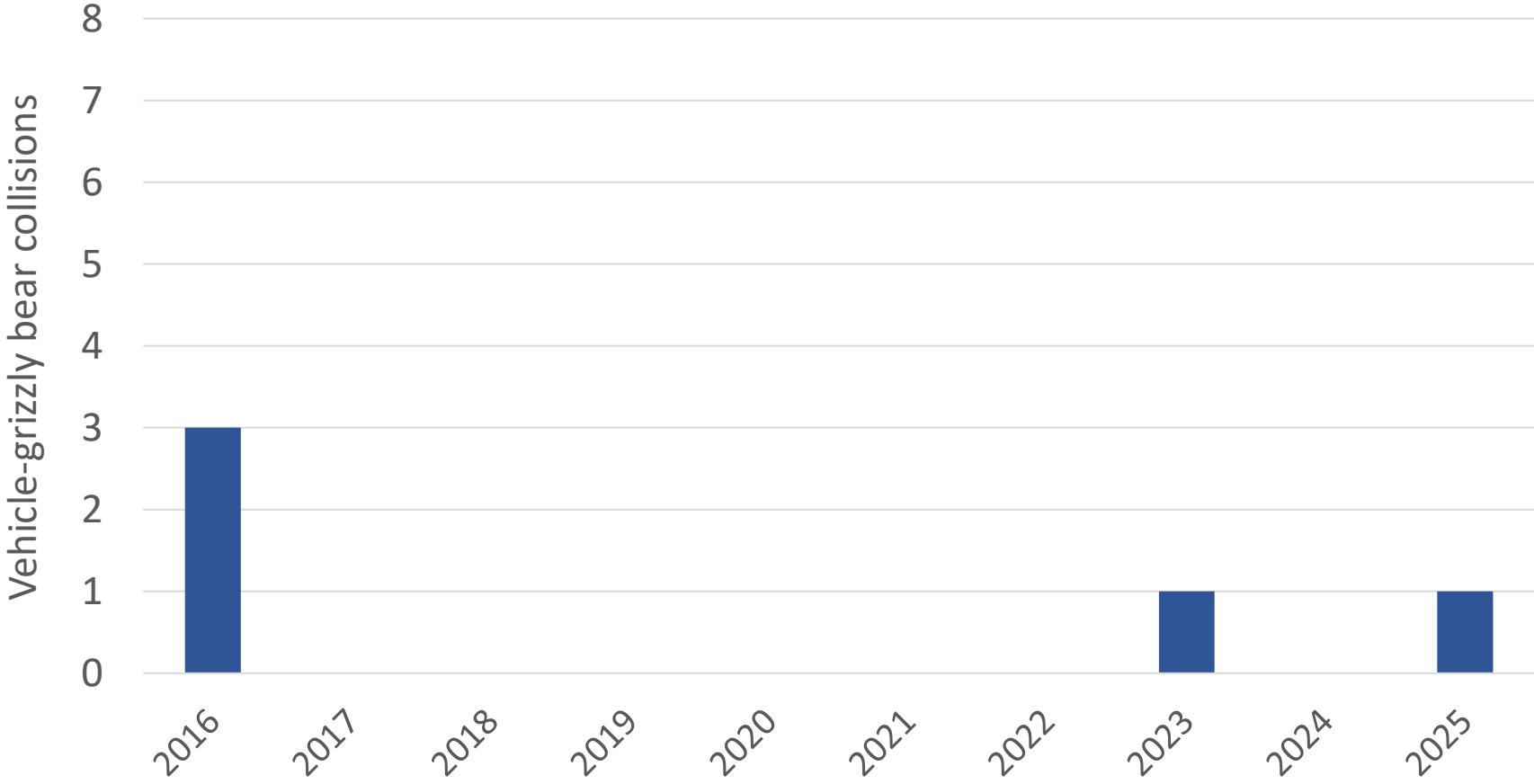
Grizzly bear relocation

1

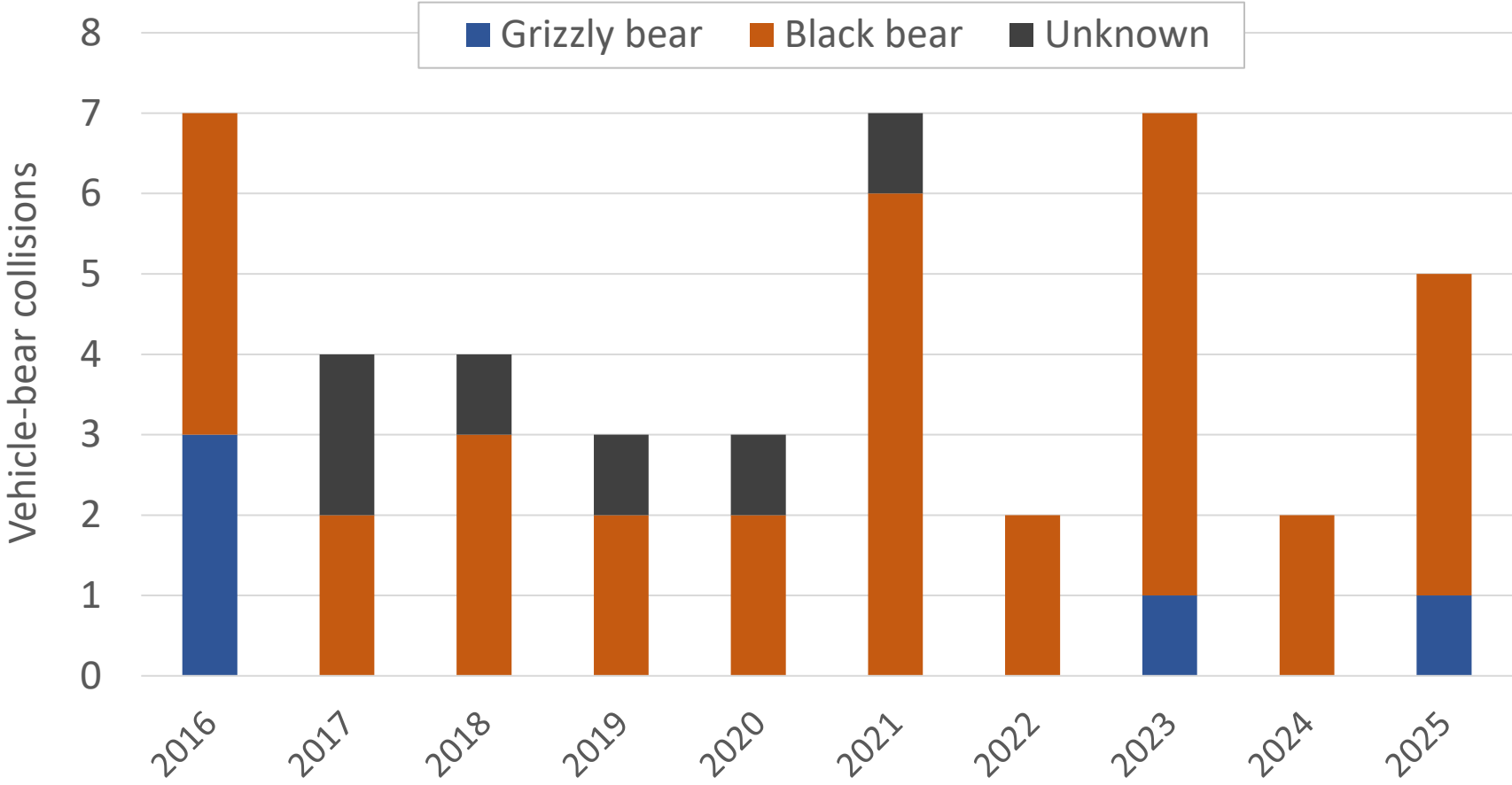
Vehicle-grizzly bear mortality



Vehicle-grizzly bear collisions (2016-2025)



Vehicle-bear collisions (2016-2025)



Conflict mitigations (2025)

Temporary area closures	11
No stopping zones	7
Trailhead bear safety signs	38
Ungulate carcass removals	51
Unsecured attractant warnings	>1,800
Bear education outreach events	17
Staff bear safety trainings	19
Bear-resistant trash/recycling infrastructure	100%



Bear Box Installation

In partnership with the
Grand Teton National Park Foundation:

1,151 modern bear boxes installed



Bear Jam Management

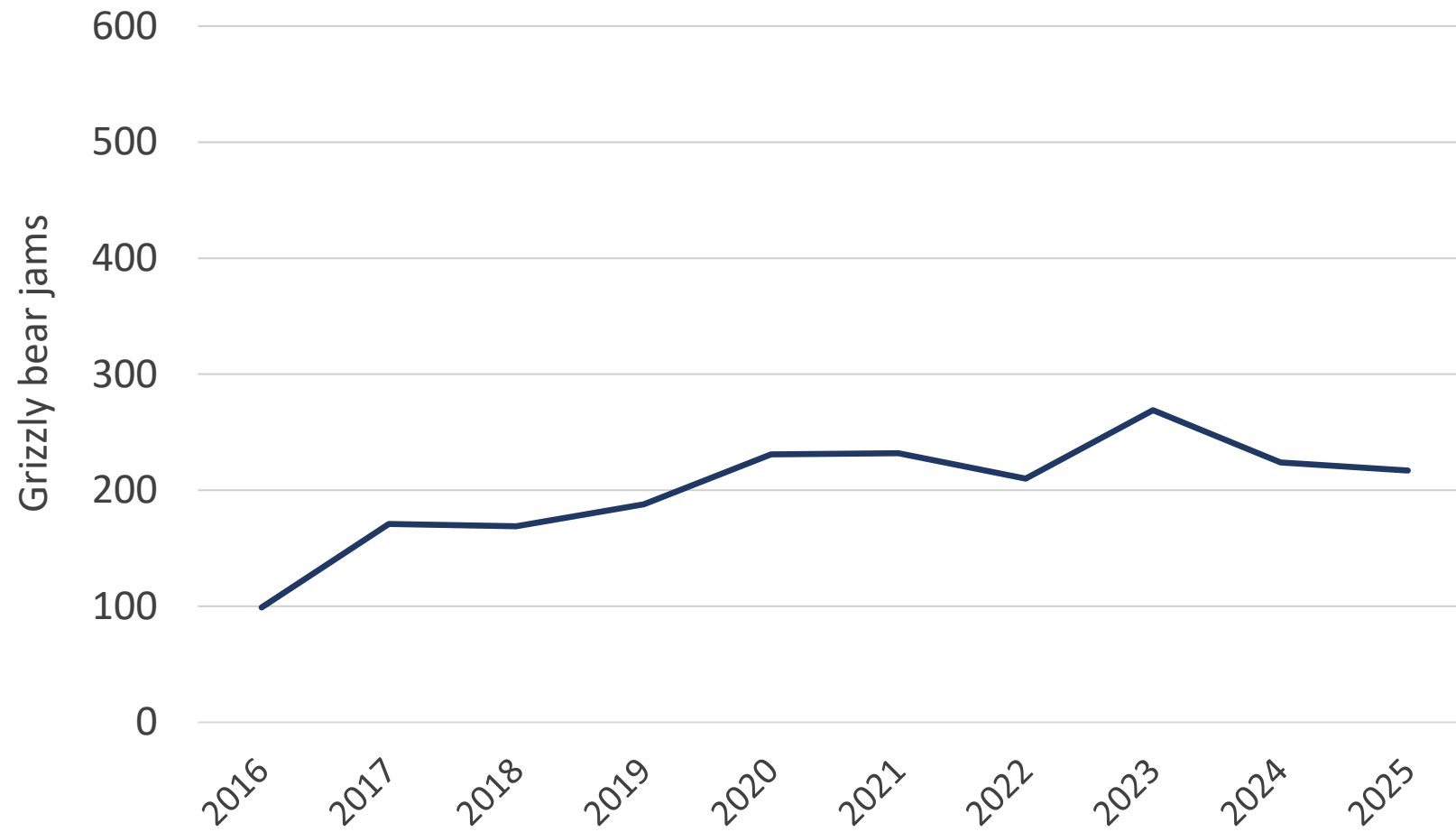
Minimum of **217 grizzly bear jams**,
which represented 38% of all bear jams in 2025



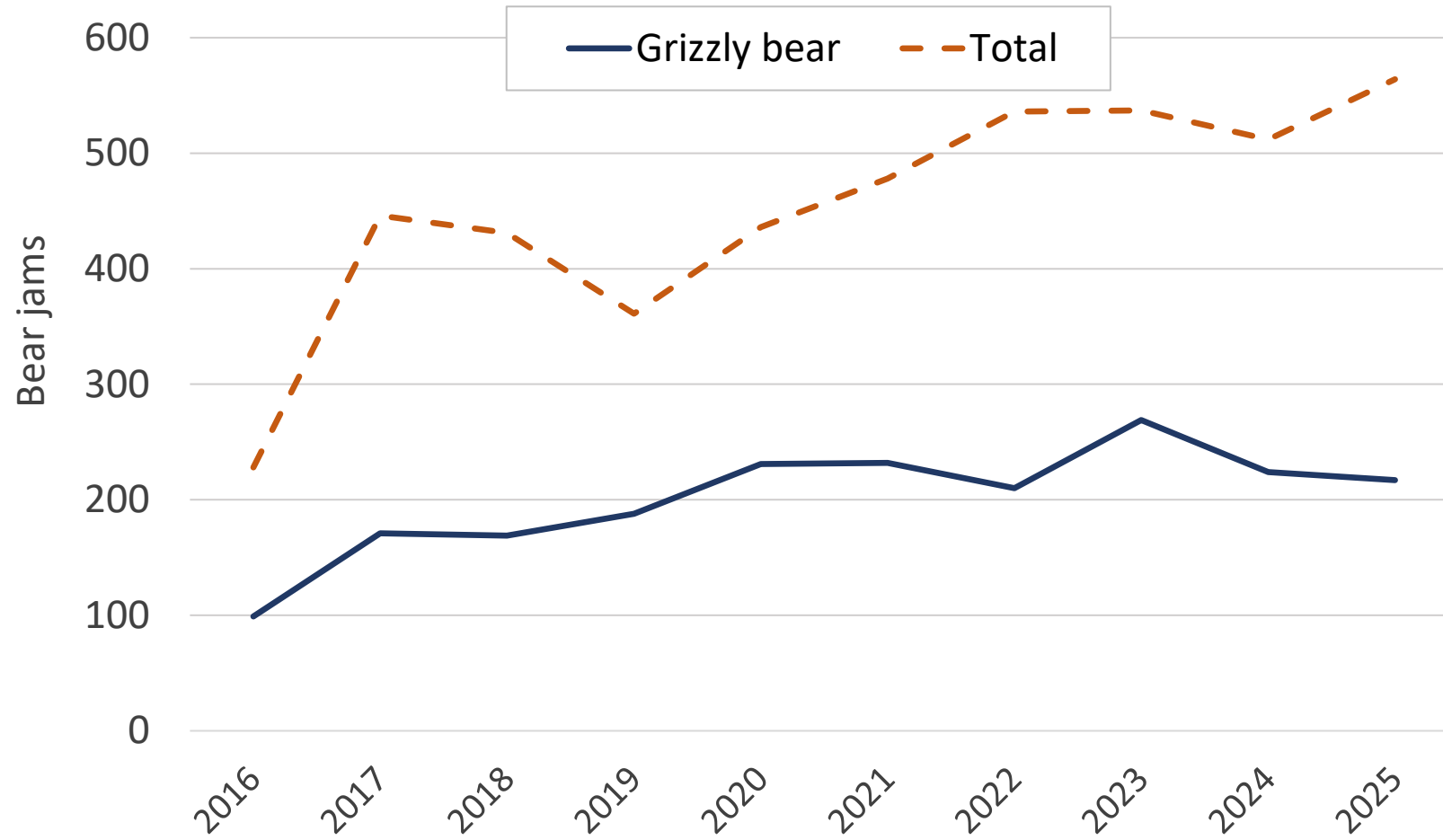
NPS

NPS

Grizzly bear jams (2016-2025)



Bear jams (2016-2025)



Wildlife Brigade

2 wildlife management rangers

2 wildlife interns

33 volunteers contributed **11,619 hours**



NPS

NPS

Bear Education Trailer

Staff dedicated **295 hours** to provide bear safety education and bear spray demonstrations to over **13,100 visitors**





bearwisejh.org



Stay Safe in Bear Country

[VIEW BEAR CONFLICT MAP](#)

JACKSON HOLE IS **BEAR COUNTRY**
 Help us keep BEARS WILD and PEOPLE SAFE

- NEVER feed wildlife
- Store all garbage in bear-resistant containers
- Always remain 100 yards from bears
- Report bear conflicts to Wyoming Game and Fish Department at: 307-733-2331

BEAR WISE

JACKSON HOLE IS BEAR COUNTRY
 HELP US KEEP PEOPLE SAFE AND BEARS WILD

KEEP FOOD AWAY FROM BEARS

- Store all food and scented items in a bear-resistant container, locked vehicle, hard sided camper, or building.
- Never leave attractants unattended - even the lunch in your backpack or the cooler in the back of the truck.
- Never feed bears. A fed bear is a dead bear.

What is an attractant?
 Almost anything with a scent can attract bears, including human and pet food, trash, toiletries, grease or dirty grills, and bird seed.

KEEP THESE ITEMS SECURED, AT ALL TIMES

Do you know how to stay safe in bear country? Learn how at bearwisejh.org

BEAR WISE JACKSON HOLE





Thank You

for helping to keep bears wild and people safe

2025 Wildlife Staff Acknowledgments:

G. Angelo, B. Apel, T. Brasington, C. Butler, M. Clark, R. Clark, R. Coscarelli, S. Dewey, R. DuCharme, C. Faustman, C. Faustman, L. Fisher, J. Gonsiewski, N. Gonsiewski, C. Hayden, T. Hayden, C. Hutson, M. Kirby, L. Kirby, T. Kirby, A. Langford, J. Lieb, S. Liske, R. Mascia, T. Mascia, S. Morriss, S. Morriss, J. Potter, A. Ryan, S. Ryan, J. Schwabedissen, J. Stephenson, B. Swift, D. Titley, K. Titley, E. Vetter, P. Waite, A. Willemain, C. Willemain, J. Willemain, K. Wilmot, C. Whaley, A. Zuckerman

